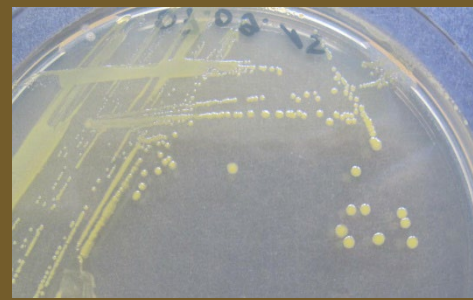
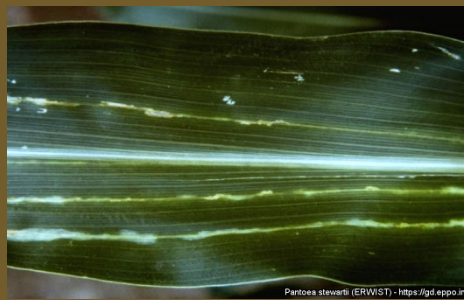
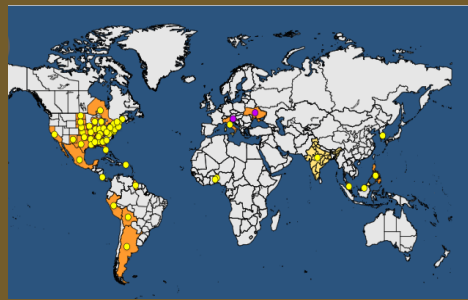


# Use of new diagnostic tools for the detection of *Pantoea stewartii* subsp. *stewartii* from plants and seeds



## Funding

Non-competitive funding mechanism. Each funder only pays for the participation of their own national researchers. Total funding € 89 000

## Research consortium

ANSES (FR), AGES (AT), Eurofins (FR), CREA (IT), FGBU-VNIIEK (RU), NIB (SI)

## Contact information

Project coordinator: Valerie Olivier  
[valerie.olivier@anses.fr](mailto:valerie.olivier@anses.fr)

## Goals and objectives

*Pantoea stewartii* subsp. *stewartii* is a regulated bacterium causing severe damages to *Zea mays* (maize). *Pantoea stewartii* subsp. *Indologenes* is phylogenetically close to *Pantoea stewartii* subsp. *stewartii* but avirulent on maize.

The project aims to validate tests for the diagnosis of *Pantoea stewartii* subsp. *stewartii* and *Pantoea stewartii* subsp. *indologenes*.

## Key outputs and results

- A test performance study will be organized to validate selected tests. Synergies with the H2020 VALITEST project that organized a test performance study in 2019 will be pursued. The test performance study will be organised on naturally infected plants and/or seeds, but other matrices (such as pure cultures and insects) could be selected.
- Studies on the size of the sample will be performed, in order to validate the amount of seeds needed to increase the probability to detect the target species.