



DATA STEWARDSHIP FLAVORS: DUTCH CUISINE

LENA KARVOVSKAYA

Collaborations Workshop 2020 (CW20)

2020-03-31 to 2020-04-02

Session 4.2: Professionalising support for Open
Research

CC BY 2.0

Photo by [Brooke Lark](#) on [Unsplash](#)

1/4/2020

DISCLAIMER

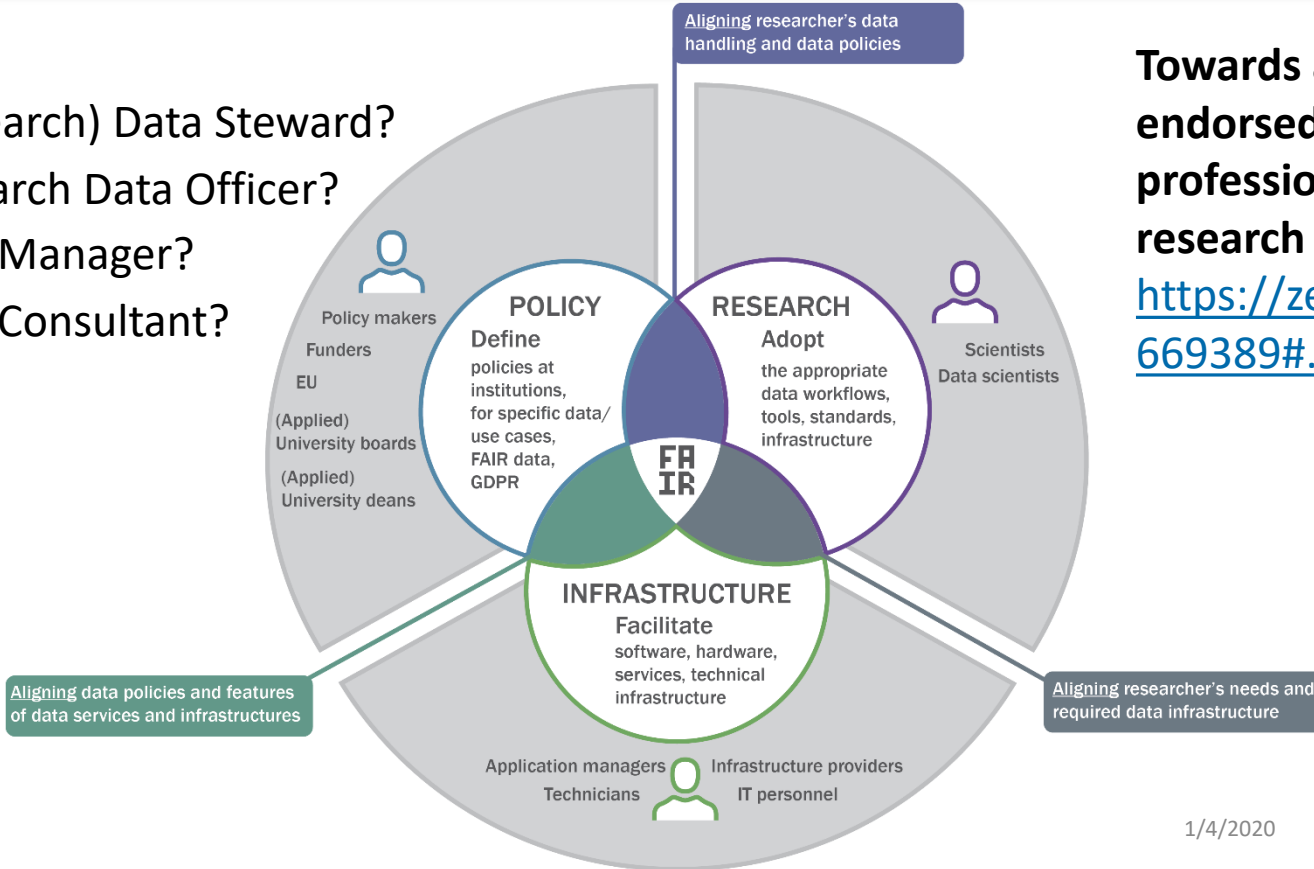
I discuss my personal impressions of the data stewardship situation

I am not a specialist in the topic and I didn't do any systematic research on it. For a systematic overview, see the two reports from the national coordination centre RDM (LCRDM), in the session notes



PROFESSIONAL DATA STEWARDS: WHAT DO THEY DO?

(Research) Data Steward?
Research Data Officer?
Data Manager?
Data Consultant?



Towards a community-endorsed data steward profession for supporting research

https://zenodo.org/record/3669389#.Xn-83Xso_IU

THREE CASE STUDIES

VU Amsterdam

TU Delft

Utrecht University



source: Globe-trotter / CC BY-SA
<https://commons.wikimedia.org/wiki/File:Netherlands-regions-new.svg>

1/4/2020

WHO AM I: FROM LINGUISTICS...



DOBES

DOCUMENTATION OF ENDANGERED LANGUAGES

KOLA SÁMI MEDIA



DOBES > Documentation Projects > Kola Sámi

KOLA SAMI

[Kola Sámi](#) [Language](#) [Geography](#) [People & Culture](#) [Project](#) [Team](#) [Data examples](#)

PROJECT STATISTICS

Sessions: 294

Audio recordings: 5660

Video recordings: 41

Annotations: 136

Images: 15

Last update: 2017-6-18

The four languages under investigation Ter Sámi, Kildin Sámi, Akkala Sámi and Skolt Sámi belong to the East-Sámi subgroup. Sámi is a branch of the Uralic language family. All Sámi languages are fairly similar in grammatical structure and lexicon. They form a dialect chain stretching from central and northern Scandinavia to the eastern tip of the Kola Peninsula in Northwest Russia.

[Read more...](#)

Lena Karvovskaya

The typology and formal semantics of adnominal possession



Verderbosse
Gerrit
School of
Linguistics
Leiden University

Linguistics:
Student assistant in language
documentation projects

PhD from Leiden University



WHO AM I: ...TO COMMUNITY BUILDING



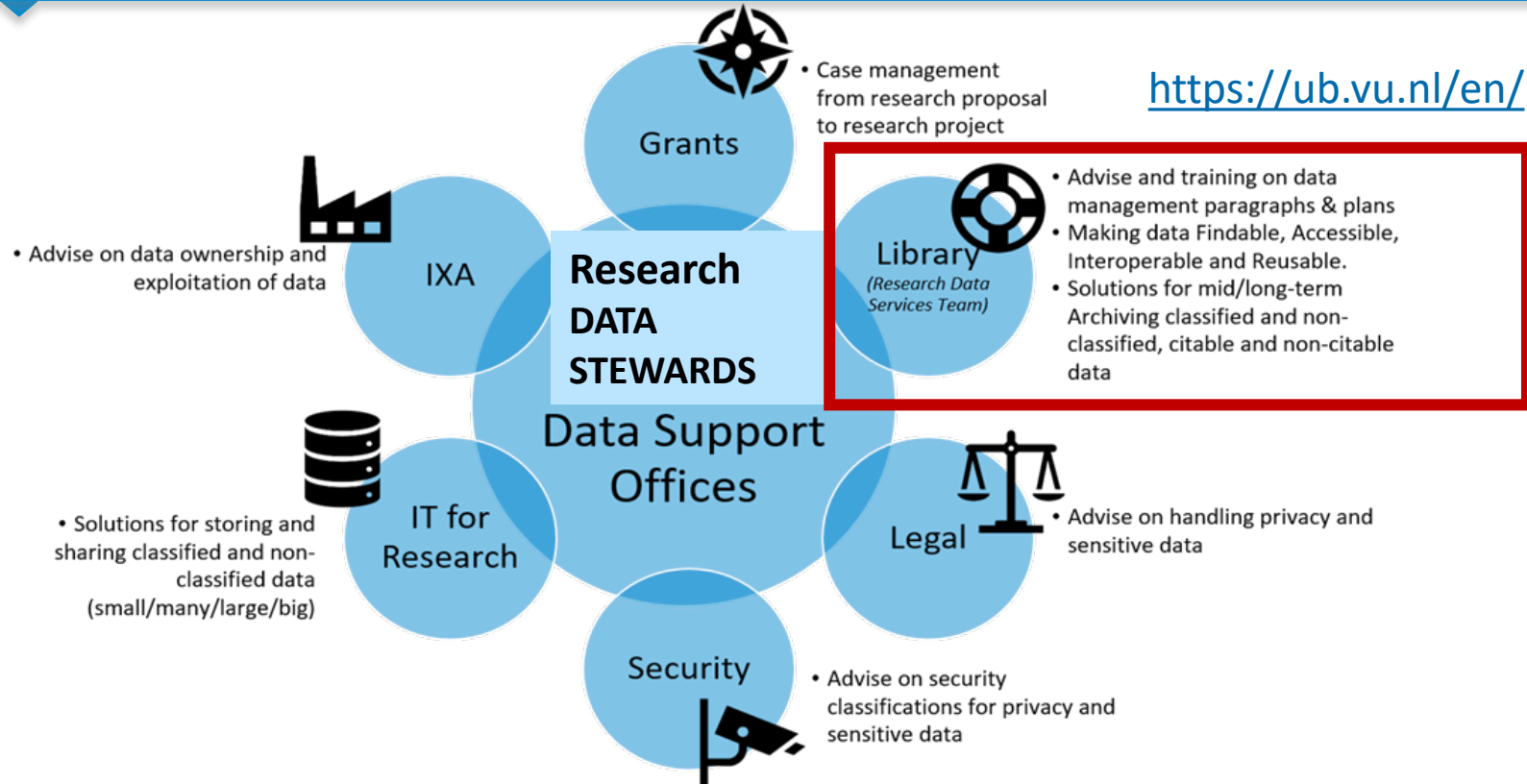
Research data manager (UU Library)

Community manager RDM (VU Library)





Illustrations credit: <https://www.uu.nl/>

LIBRARY AND RDM WITHIN VU



DEDICATED DATA STEWARDS AT FACULTIES

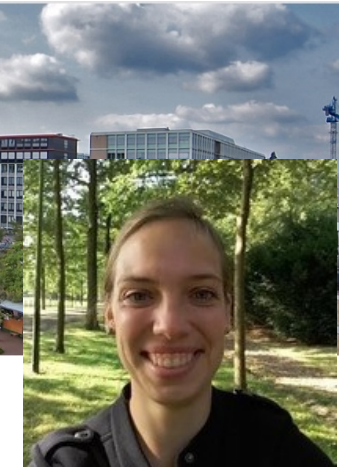
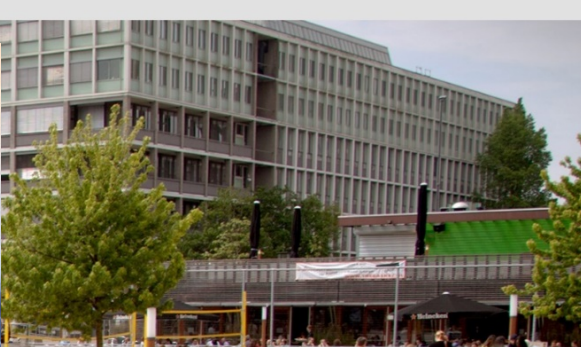


Faculty	Data steward
ACTA	Bart Hattink
FGB	Jessica Hrudey
FGW	Onno Huber
LAW	
VUMC	Elize Vlainic
SBE	Veerle Eggens
BETA	Brett Olivier & Christine Dijk
FSW	
FRT	NA

<https://ub.vu.nl/en/university-library-for-researchers/research-data-support/rdm-community/index.aspx>

DATA STEWARD AT VU: A CLOSER LOOK

Home



The Faculty of Behavioural and Movement Sciences

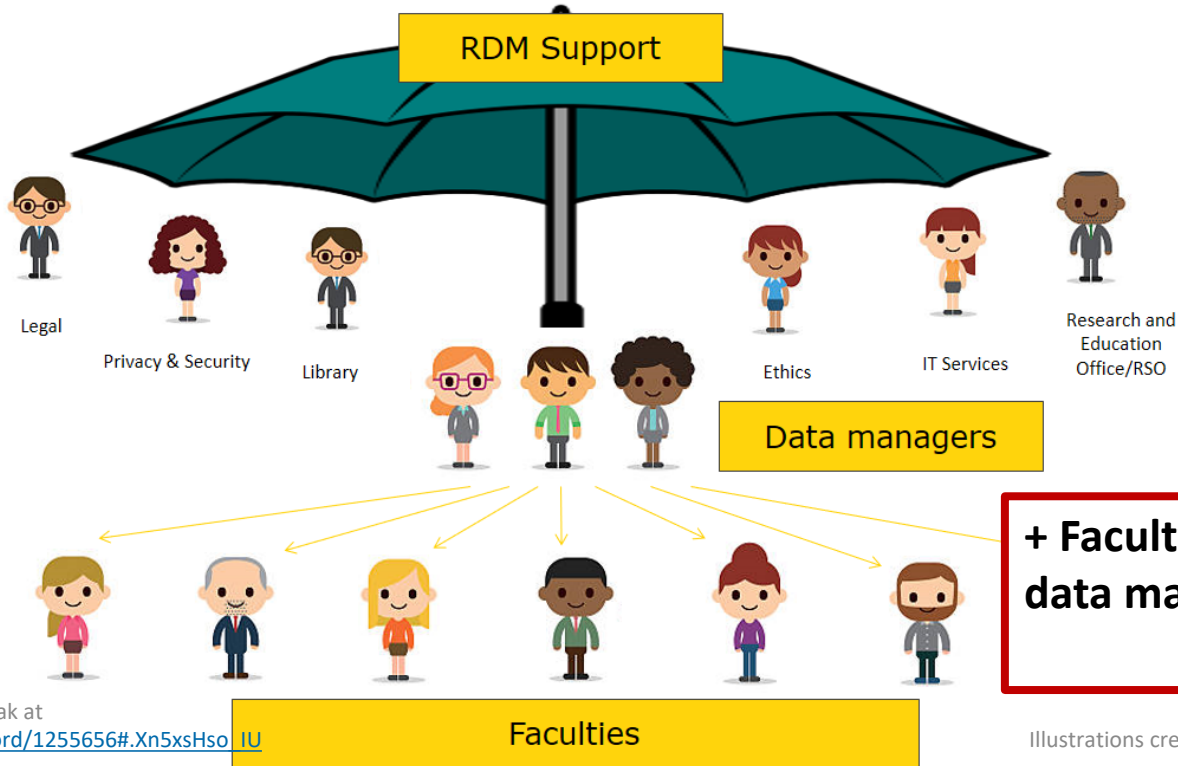
The Faculty of Sciences

What kind of help researchers ask you most?

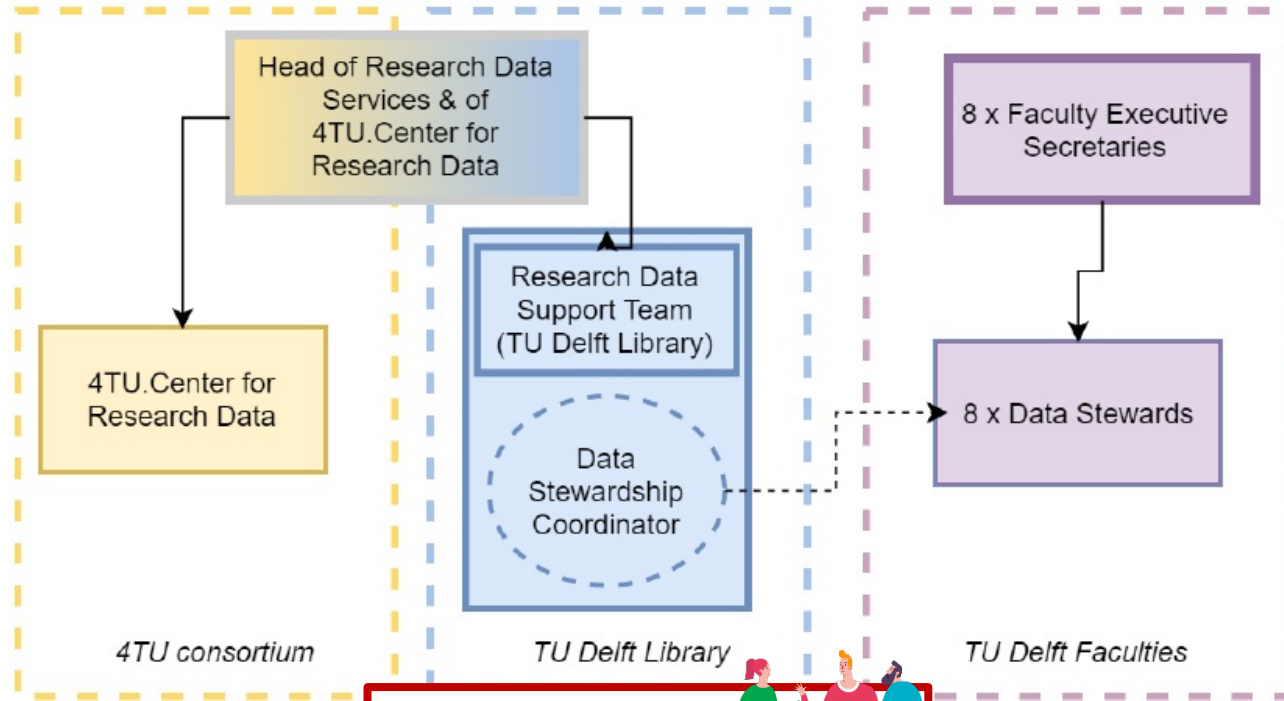
“At the moment ...The formulation of RDM plans (particularly with regard to storage and metadata) and help with the archiving of data for pre-submission publication.”

B.Olivier <https://tinyurl.com/Beta-interview>

DATA STEWARDSHIP AT UTRECHT UNIVERSITY



DATA STEWARDSHIP AT TU DELFT



+ Data managers

<https://tinyurl.com/TU-hiring>



CONCLUSIONS: INGREDIENTS TO HAVE IN HOUSE

- contact point for researchers
- referral to specialists as needed
- help with DMPs

- privacy questions (GDPR)
- data cleaning, organizing, archiving, etc.
- writing workflows and guidelines
- developing policy
- raising awareness
- developing communication materials
- providing training



1/4/2020

Thank you!

Questions?

Twitter: @LangData

E: e.karvovskaya@vu.nl

