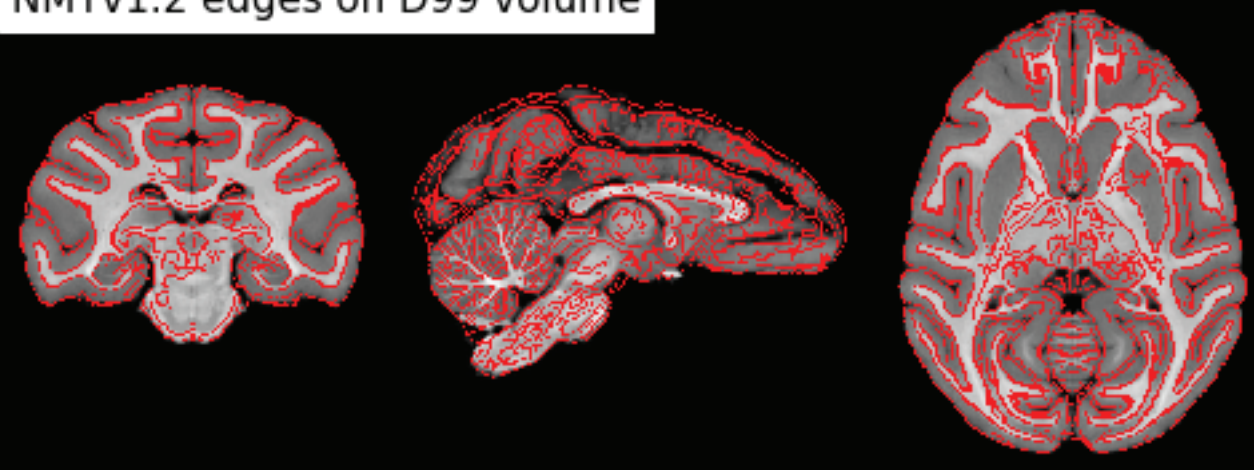


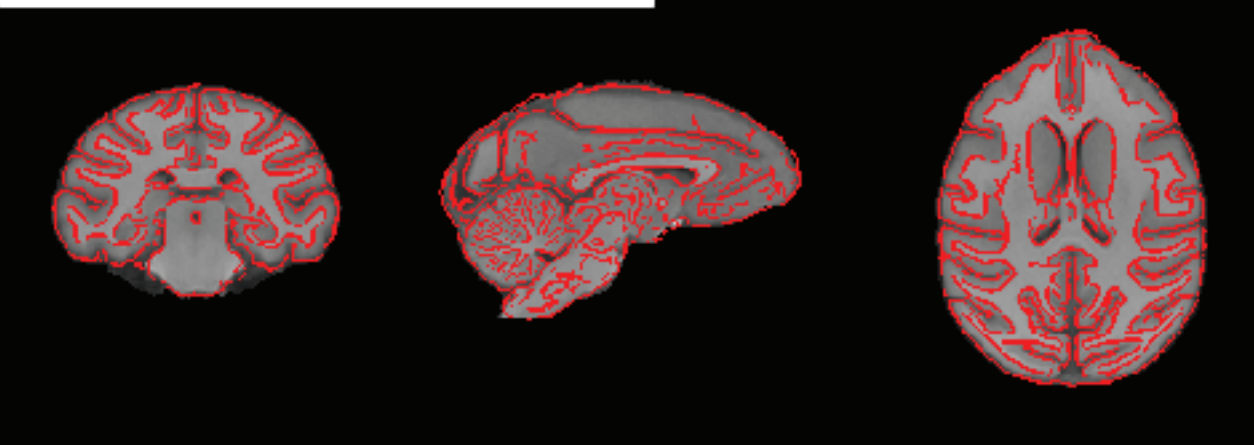
NMTv1.2 edges on D99 volume



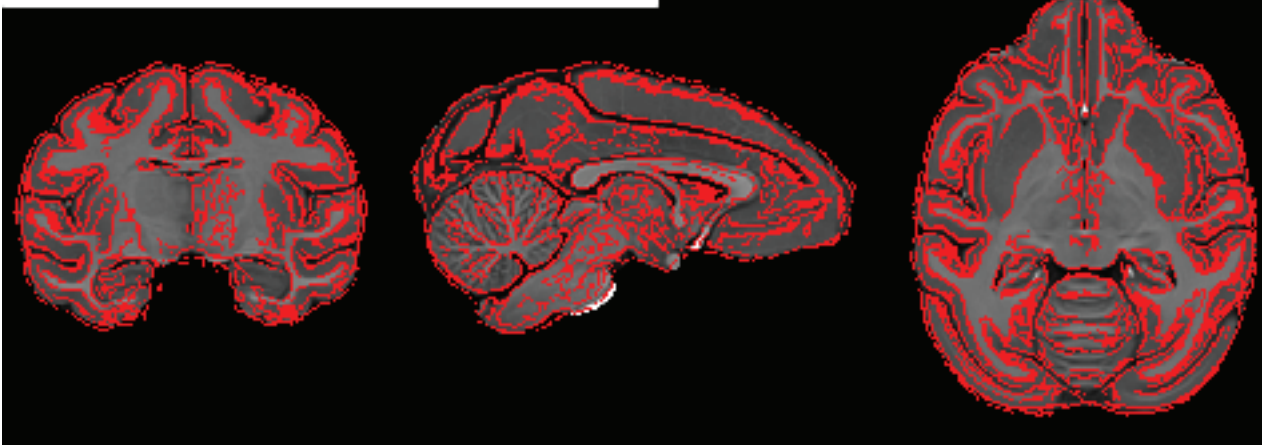
D99 edges on NMTv1.2 volume



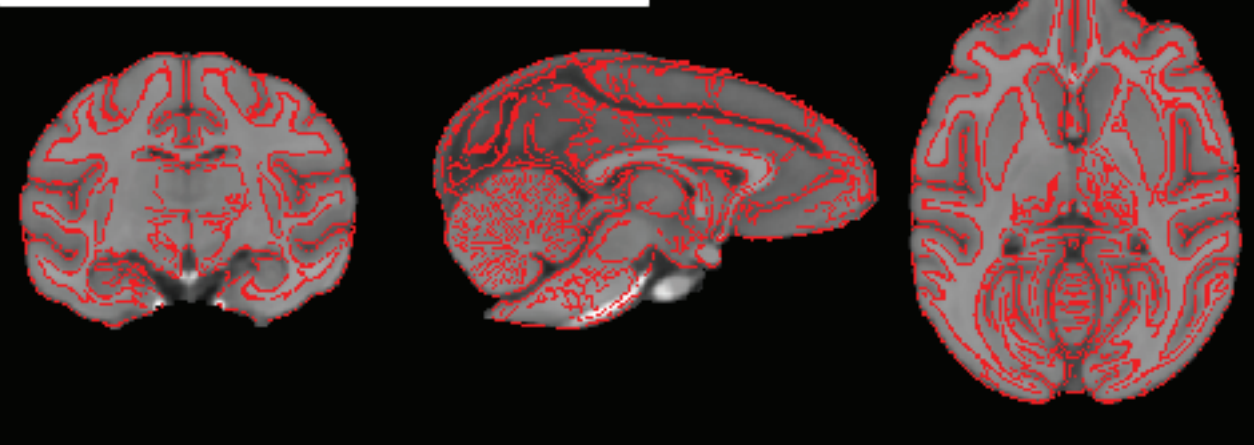
NMTv1.2 edges on INIA volume



INIA edges on NMTv1.2 volume



NMTv1.2 edges on MNI volume



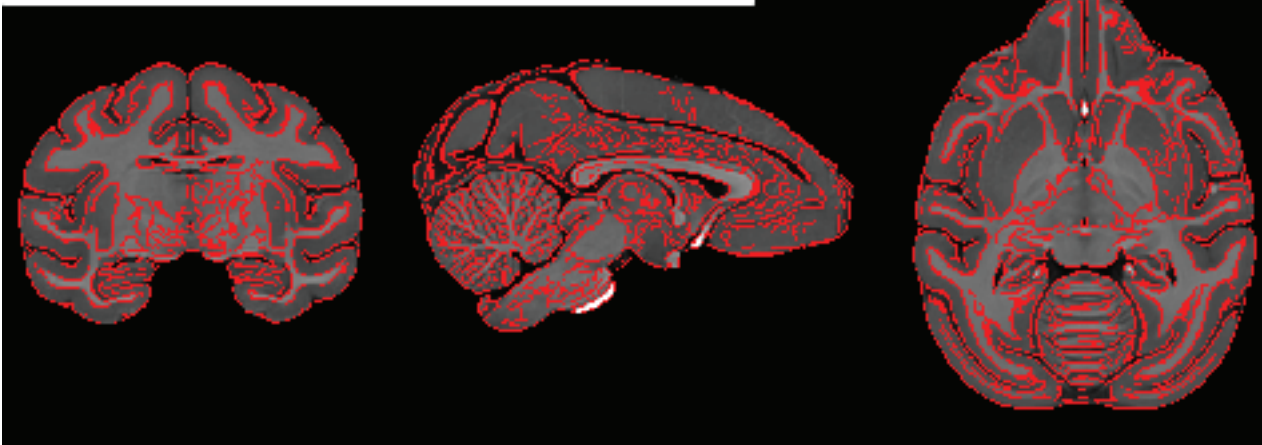
MNI edges on NMTv1.2 volume



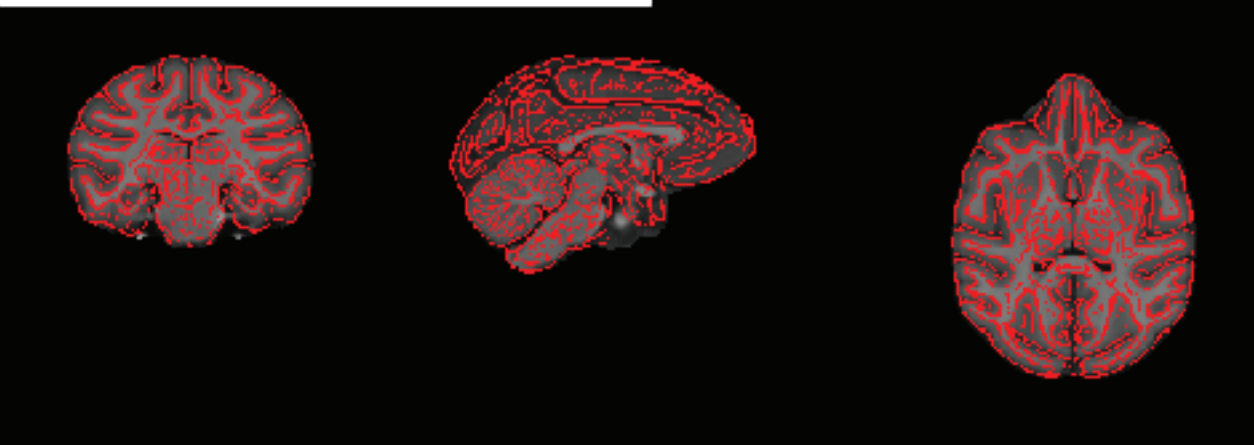
NMTv1.2 edges on NMTv1.3 volume



NMTv1.3 edges on NMTv1.2 volume



NMTv1.2 edges on YRK volume



YRK edges on NMTv1.2 volume

