

Geodata for Swiss Education Implementation of a National Geoportal

Poster presented at LIBER Annual Conference, Helsinki, 29.6.-1.7.2016

Motivation and Project Aim

→ Facilitate access to geodata for research and education

There is an increasing demand for geodata in different academic disciplines such as earth sciences, cartography, architecture, spatial planning and many others. However, until today, there is no central academic geodata infrastructure in Switzerland. The project **Geodata4SwissEDU** (Geodata for Swiss Education) will fill this gap by establishing a nationwide access platform to geodata for research and education.

Project Partners

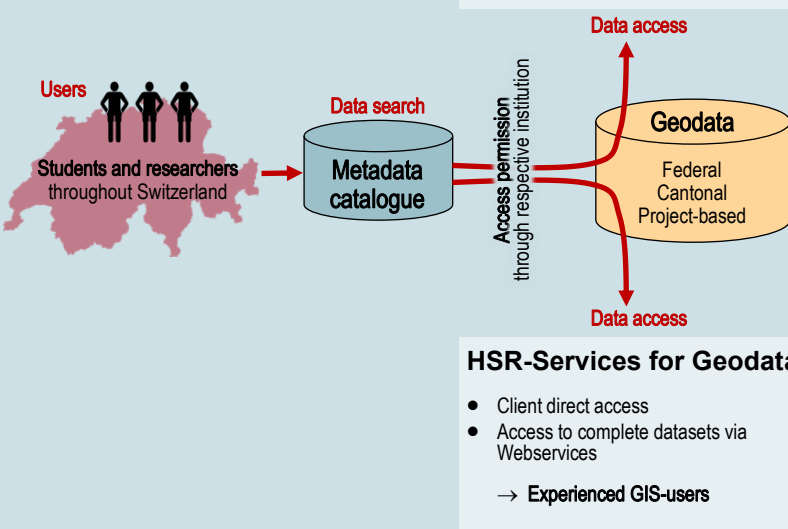
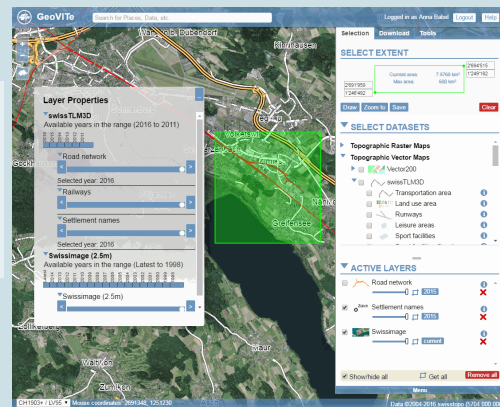
The project is funded by swissuniversities (Rectors' Conference of Swiss Higher Education Institutions) and carried out in collaboration between three partners to ensure the expertise needed to establish such a service with the necessary infrastructure. Project partners are:

- Institute of Cartography and Geoinformation at ETH Zurich (IKG)
- University of Applied Sciences Rapperswil (HSR)
- ETH-Bibliothek (central library of ETH Zurich)

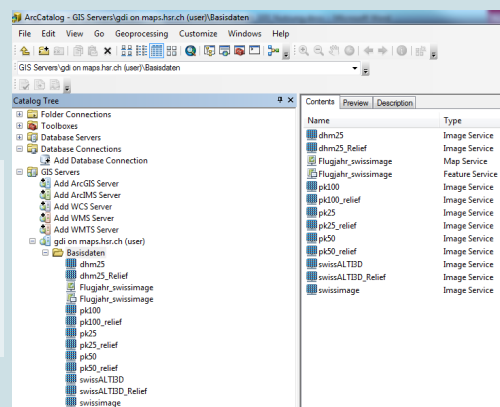
The National Geoportal geodata4edu

GeoVITe (IKG)

- Web-based access
 - Graphical user interface
 - Access to selected part of data
- Less experienced GIS-users



Application
Integration of geodata in GIS software e.g. ArcGIS, QGIS...



Use cases



Challenges

- **Scalability** of the technical infrastructure
- **User-friendliness** of the national service
- Dealing with **legal issues**
- Establishing a **customer base**
- Developing a **sustainable business model** ensuring a long-term, efficient operation of the service
- **Recruitment of experts** to support the project work and the sustainable operation

Opportunities

- **Bundling of resources** to acquire data and obtain licences
- **Expansion of user groups** to different academic disciplines
- **Easy access to geodata** for researchers and students throughout Switzerland
- Combination of federal, cantonal and project-based data in a **centralised metadatabase**
- Setting up and running a technical infrastructure helps to **maximise synergies between project partners** and thereby results in **lower costs**
- The platform allows to **integrate extensive geospatial data** in the future