

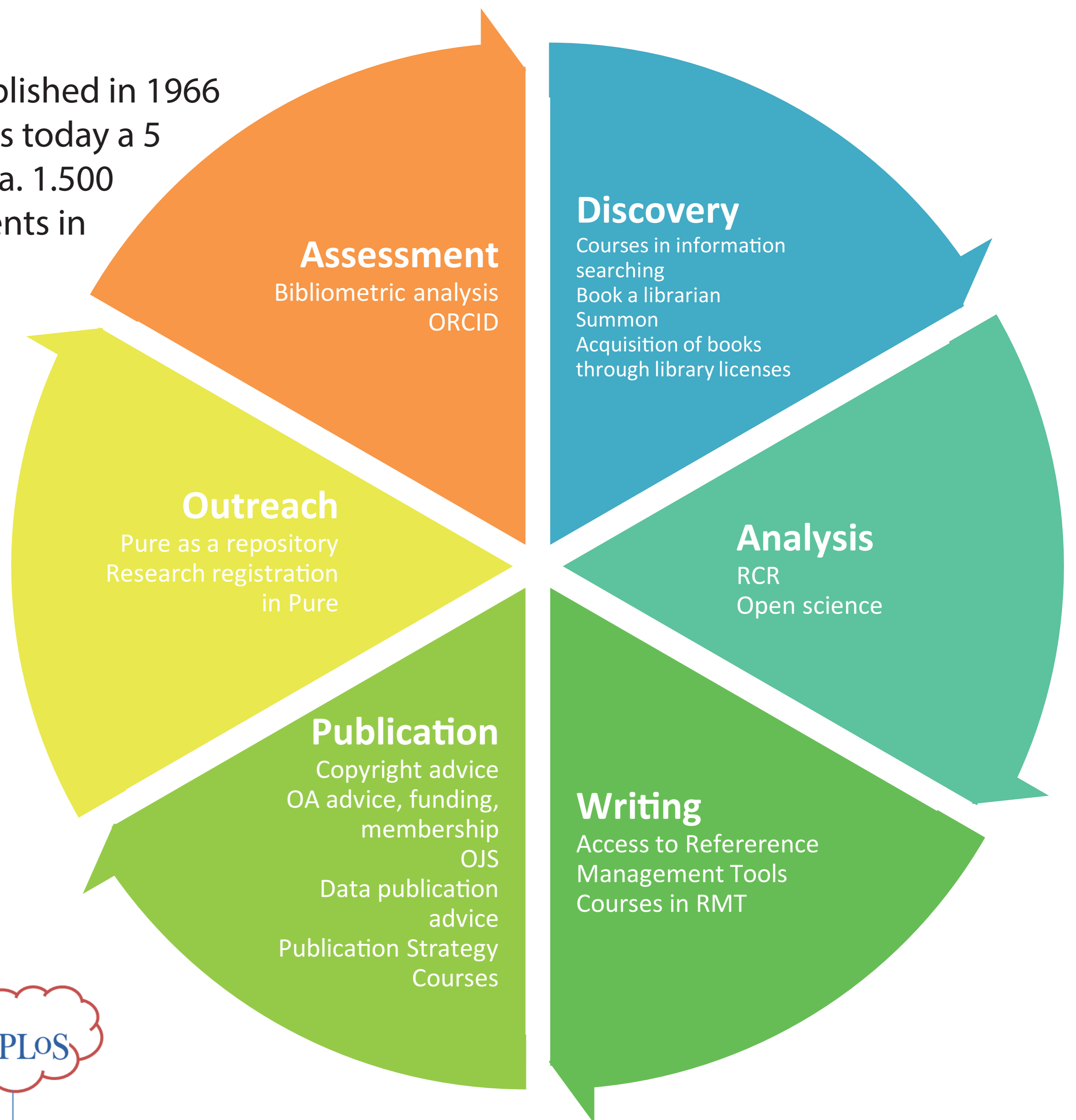
SDU Library as an Open Science partner

University Library of Southern Denmark

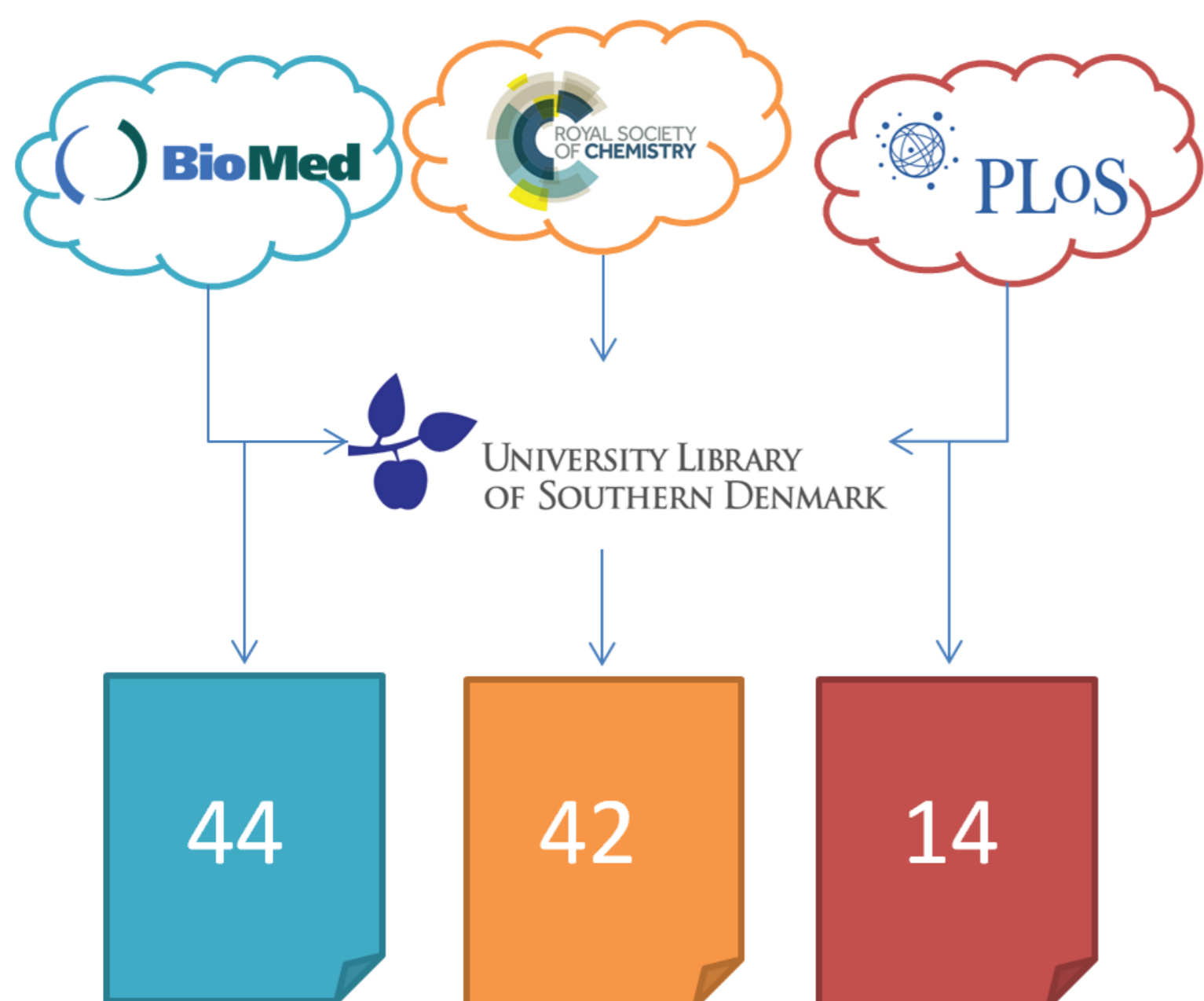
The University Library of Southern Denmark is increasingly involved in the Open Science movement through different activities which are in line with university strategy and policy. This poster presents a case which shows how these activities come into play in a successful way.

Odense University was established in 1966 as a medical university, but is today a 5 faculty institution housing ca. 1.500 academics and 30.000 students in 6 campuses.

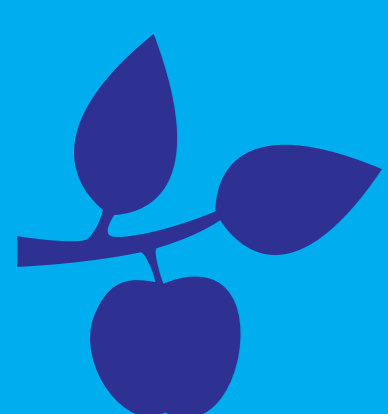
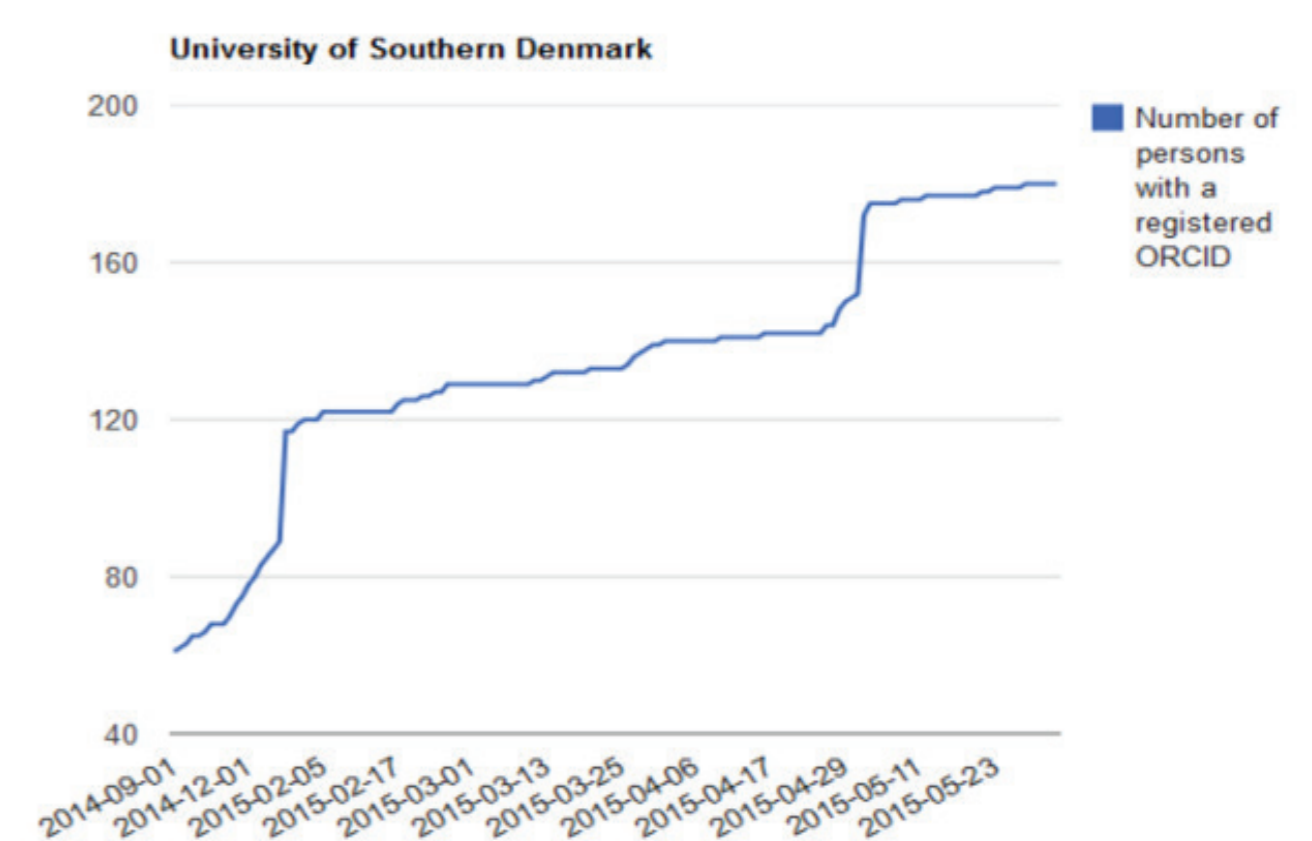
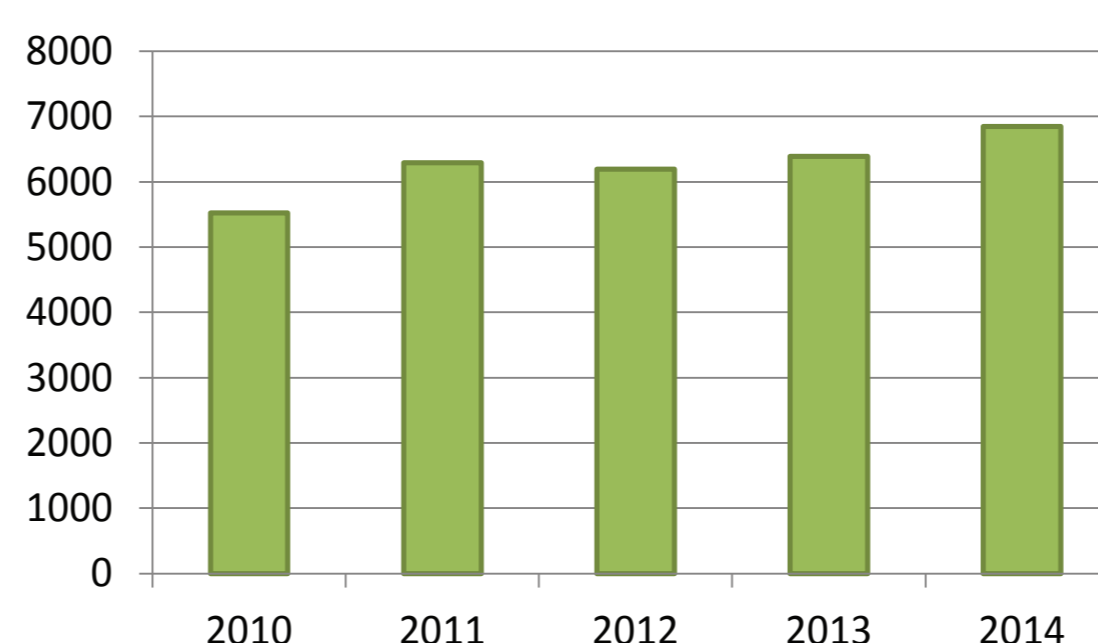
The library employs ca. 110 librarians, information specialists and others, supporting the university's researchers and students. The last couple of years have seen a change in the range and types of services and support functions the library offers.



Supported articles in 2014-15



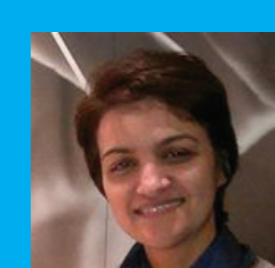
No. Of Publications



UNIVERSITY LIBRARY
OF SOUTHERN DENMARK



Asger Væring Larsen
Executive Library Officer
avla@bib.sdu.dk



Najmeh Shaghaei
Head of Campus Library
nas@bib.sdu.dk