

# Communities and Cloud Governance

Franciska de Jong, Daan Broeder  
CLARIN ERIC

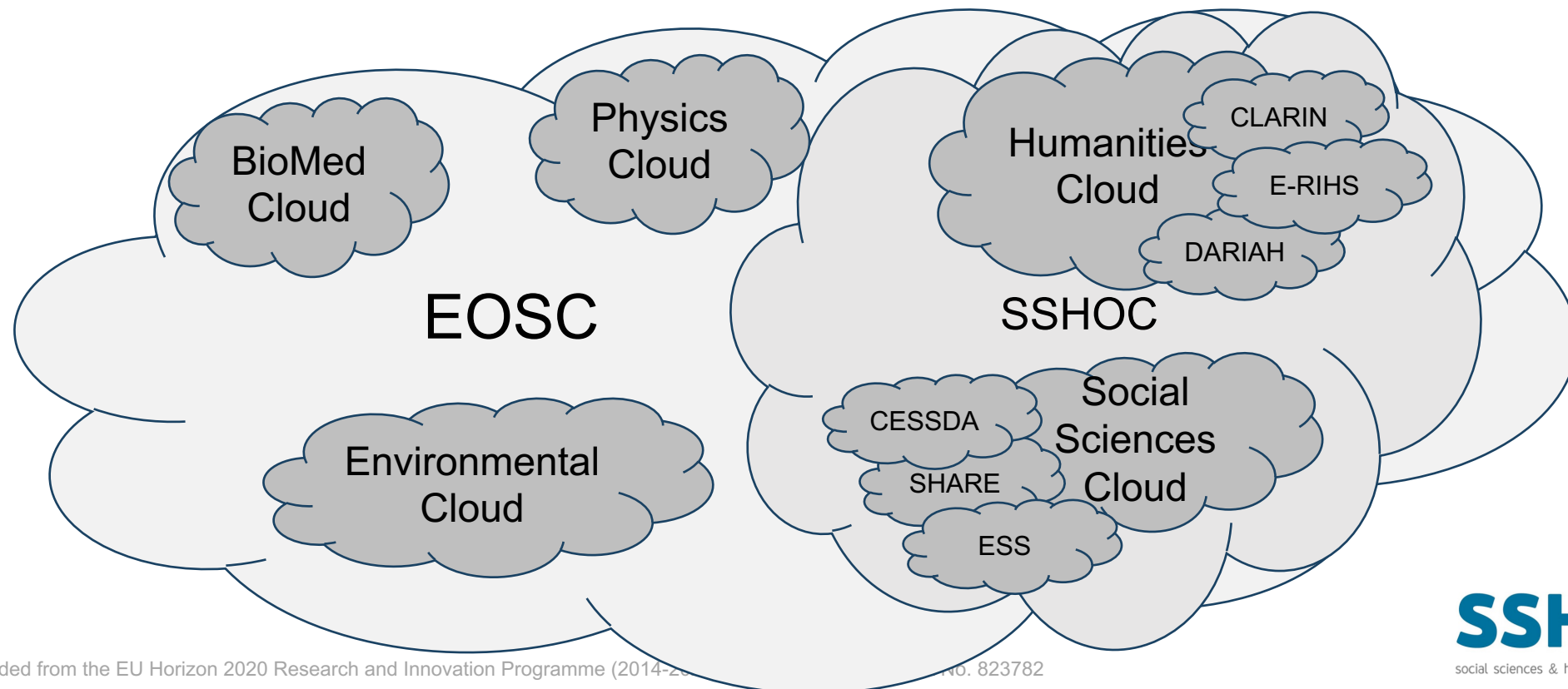
[f.m.g.dejong@uu.nl](mailto:f.m.g.dejong@uu.nl), [daan.broeder@di.huc.knaw.nl](mailto:daan.broeder@di.huc.knaw.nl)

EOSC services, collaborations, and RDA, RDA P14, Helsinki, 21 Oct., 2019



# Cloud of Clouds

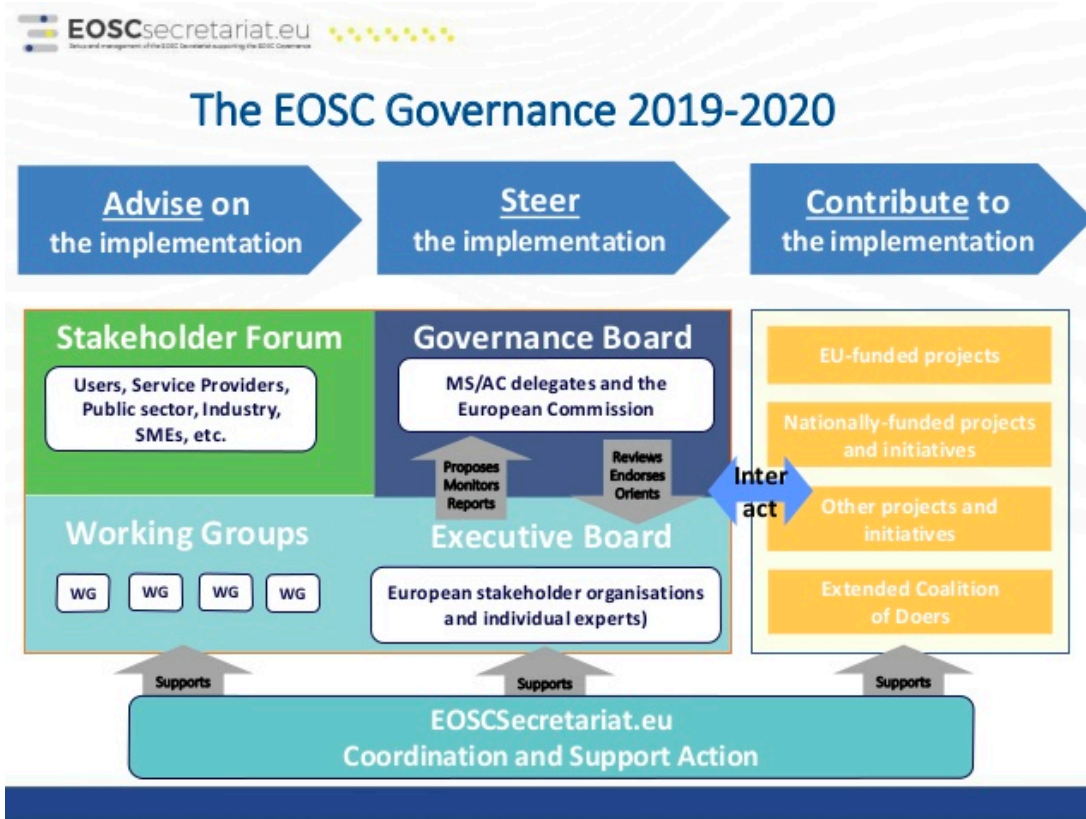
- Let's take 'cloud' as a label for distributed infrastructure, with shareable resources, optimized access for researchers and cost efficiency.
- This still leaves many options for organizing the current research infrastructure landscape where much has been created already: services, infrastructures, collaboration



# Cloud of clouds governance

- 🌀 Every community or thematic-cluster its own cloud?
- 🌀 Harmonization between clouds?
- 🌀 SSH Open Cloud (SSHOC) and CLARIN perspective
  - 🌀 Conditions for sustainability: responsibility, ownership, funding
  - 🌀 At stake: potential for
    - 🌀 consolidation of the SSH 'heritage'
    - 🌀 multidisciplinary collaboration
  - 🌀 SSHOC and EOSC:
    - 🌀 Can EOSC incorporate the results of collaborations in cluster projects?
    - 🌀 Can cluster projects act as a conduit of products and results into EOSC?
  - 🌀 Implications of governance at cloud level
    - 🌀 at the level of funding (who gets access under which fee model)
    - 🌀 at the level of governance (who decides what)

# Governance at EOSC level



- EOSC Governing Board (Member States, MS)
- EOSC Executive Board (some of the stakeholders)
- Stakeholder Forum
- EOSCsecretariat.eu project
- EOSC WG on Sustainability (including governance)

# Clusters in the EOSC landscape

- All of different size, structure and scope
- Different levels of EOSC and e-Infra involvement, for example for SSHOC
  - CLARIN ERIC and some DARIAH partners are involved in EOSC-hub
  - other partners were involved in the EOSC pilots, and
  - SSHOC/CESSDA participation in EOSC-hub strategy board
  - SSH represented in EOSC executive board
- Still most pronounced are differences with non-thematic e-Infrastructure organizations
  - that have been active long time and
  - have excellent ties to the national research infra facilities while
  - clusters have their roots in research communities and disciplinary practices.
- Challenge: how to manage the diversity and the need for alignment of strategies
  - at the disciplinary level
  - at the national level
  - at the European level
  - at the level of e-Infrastructure organizations



# Alignment between clusters

- 🌀 Differences between clusters exist, just as between the partners within a cluster
- 🌀 But the representation of thematic communities in EOSC could be a common theme
- 🌀 All cluster have a WP on governance
- 🌀 Clusters met on 25 September (in context of EOSC meeting)
- 🌀 A joined report is planned
- 🌀 This meeting!



# Governance-related actions

*reasoning based on the SSHOC example*

- 🌀 Discussion on how to influence the EOSC agenda
- 🌀 Analysis of the SSHOC results, how to consolidate, how to share, how to optimize?
- 🌀 Analysis and discussion of the options that may foster sustainability:
  - 🌀 Using/sharing data management e-Infra services from e.g. EOSC-hub
  - 🌀 Sharing community-specific services with others
  - 🌀 Identifying future-proof e-Infra solutions
  - 🌀 Determining which community solutions remain preferable
- 🌀 Arrange the exchange of SSH needs and requirements with the EOSC generic service developers, governing bodies, policy makers, ...
- 🌀 Identify and/or initiate dynamics in the funding of European research infrastructures, e.g. to fill gaps in the current landscape



# SSHOC service analysis (in progress)

SSHOC service inventory with EOSChub impact							
	Name	Status existing/development/extension	current/intended service provider	EOSChub status	EOSChub service match	type of relation	dependency (complement, precondition, competitor)
WP 1							
WP2	SSHOC Web Platform	1st version online					
WP3							
	task1 SSHOC vocabulary platform survey repository		yes yes (GESIS)	none none	<a href="#">B2NOTE</a> <a href="#">B2FIND</a>	harvested by metadata harvested by,	
	task2 survey ontology hosting	ontology results from SERI SSHOC + CAMCES (edu WageIndicator, all posted o surveycodings.org	Centerdata (current)	none	<a href="#">B2NOTE</a>	harvested by	
	task3 several TDM services setups				<a href="#">edCloud</a>	hosting, computing	
	task5 SSHOC interop hub	some existing software libr commercial tools			<a href="#">edCloud</a> <a href="#">B2DROP</a>	hosting, computing temporary storage	
	task6 SSHOC Switchboard		yes (CLARIN)	is EOSChub thematic service	<a href="#">B2DROP</a> <a href="#">B2SHARE</a> <a href="#">B2FIND</a>	storage for compute results result deposition integrated in	
WP4	SSHOC VCR	service running, to be extended	yes (CLARIN)	is a EOSChub thematic service	<a href="#">B2FIND</a> <a href="#">B2DROP</a>	integrated in Collection download in	
	task4.1 A sample management system for cross-national web surveys	development	ESS ERIC + Sciences Po		<a href="#">EOSC marketplace</a>		
	task4.2 Parallel corpora of survey questions	development	ESS ERIC is developing, but ideally the data wi ??		??	storage and hosting	
	task4.3 Translation process research	development	We require hosting and storing for the open sou ??		??	storage and hosting	
WP5	Access to sensitive data repository and access to biomedical survey data		UK Secure Lab (UKDA), ?				
	task 1	to be developed in SSHOC			?	?	
WP6		training solutions (for users, but internal training)			<a href="https://www.eosc-hub.eu/training-material">https://www.eosc-hub.eu/training-material</a>		
WP7	all SSHOC Marketplace	to be developed	DARIAH?	-alternative-, complementary	<a href="#">B2FIND</a> <a href="#">EOSC marketplace</a>	metadata harvested by	complementary/competitor

Hosting services & data

Hosting data processing workflows/pipelines

Generalized/improved versions of existing thematic EOSC services

Requirement shared by many projects

Overlapping ambitions with EOSC-hub Marketplace?



# Status SSHOC service analysis, added services from the SSHOC stakeholders

Services not directly linked to SSHOC DoA							
DARIAH	<a href="#">Data Deposit Recommendation Service (DDRS)</a>	production-ready dev version (will be released in 2019)	DARIAH	none	B2FIND		
DARIAH	<a href="#">dariahTeach</a>	e-learning platform for DH training material					
CLARIN/DARIAH	<a href="#">DH Course Registry</a>						
CLARIN	<a href="#">CLARIN portal</a>	existing	CLARIN	none	none		
CLARIN	<a href="#">Depositing services</a>	existing	CLARIN	none	VLO, B2FIND, Switchboard	metadata exchange, data processing	
CLARIN	<a href="#">Virtual Language Observatory</a>	existing	CLARIN	is a EOSChub thematic service	B2SHARE, Switchboard	metadata exchange, data processing	
CLARIN	<a href="#">Easy access to protected resources</a>	existing	CLARIN	none	none		
CLARIN	<a href="#">Language Resource Inventory</a>	existing	CLARIN	none	VLO, B2FIND	metadata exchange	
CLARIN	<a href="#">Content Search</a>	existing	CLARIN	none			
CESSDA	<a href="#">Data Catalogue</a>	existing	CESSDA	submission in progress	b2find		complement/competitor
CESSDA	<a href="#">Vocabulary Service</a>	existing	CESSDA	none			
CESSDA	European Question Bank	development	CESSDA	none			
CESSDA	<a href="#">Data Management Expert Guide</a>	existing	CESSDA	none			

non-SSHOC related

Common DARIAH/CLARIN service

# Towards a common service inventory for all clusters?

- 🌀 First analysis shows that all results can be handled by the SSHOC partner infrastructure with one or two exceptions (esp. wrt. the long tail of science)
- 🌀 SSHOC as a consumer mainly needs hosting and storage services
- 🌀 SSHOC as an EOSC contributor can help by publishing and integrating SSH services and data in the EOSC-portal and other discovery services

## 🌀 Toward a common service inventory

- 🌀 **Harmonisation of inventories across cluster (based on existing efforts and detailed as needed)**
- 🌀 **Identify common service interests**
- 🌀 **Identify gaps in the current e-Infra offerings**

# Thank You



[www.sshopencloud.eu](http://www.sshopencloud.eu)



[@SSHOpenCloud](https://twitter.com/SSHOpenCloud)



[company/sshoc](https://company.sshoc)



[info@sshopencloud.com](mailto:info@sshopencloud.com)

