

Baccha

One species of *Baccha* occurs in Ontario. It is most similar to species of *Ocyptamus*. *Baccha* are smaller and more fragile in appearance than *Ocyptamus* species. Their wings vary from clear to smokey, but are never banded and never have a brown leading edge as in species of *Ocyptamus*.

Baccha elongata

7-10 mm; uncommon S, C, N; mid May to early September; larvae are predators of aphids; widespread Holarctic species

CNCD524F



wing without brown leading edge or brown banding (present in species of *Ocyptamus* and *Pseudodoros*)



face entirely black; with only small tubercle ventrally



CNCD481M

Pseudodoros

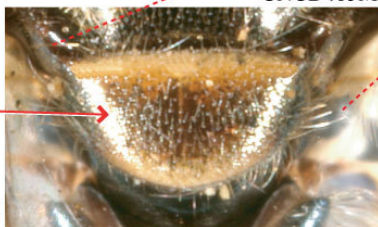
One species of *Pseudodoros* may occur in Ontario. It is most similar to species of *Ocyptamus* and *Baccha* in overall body shape and gestalt. Wing pattern and scutellum colour will differentiate it from these genera.

Pseudodoros clavatus

7-12 mm; not recorded from ON; range is from CA to NE and WI and NJ south to FL, widely distributed in Central and South America; much more common further south; flight time in northern part of range unknown.

scutellum yellow with broad transverse black band (all black in *Ocyptamus* and *Baccha*)

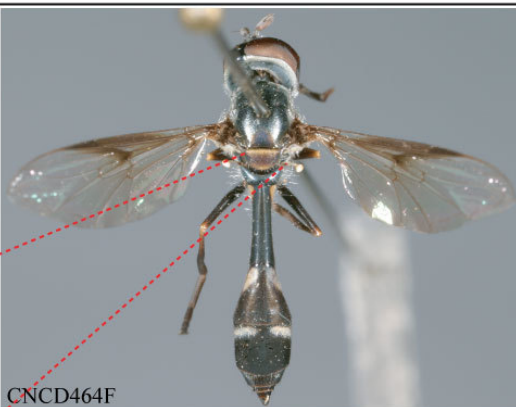
CNCD465M



wing with brown leading edge and brown band over base of r_1 and r_{2+3}

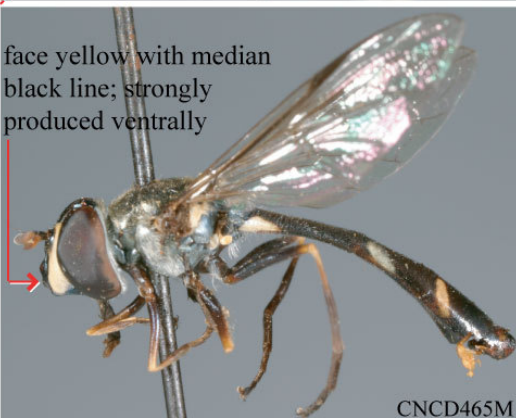


CNCD464F



CNCD464F

face yellow with median black line; strongly produced ventrally



CNCD465M