

# ENTANGLED HISTORIES OF EARLY MODERN ORDINANCES

## TEXT-SEGMENTATION AND MACHINE-LEARNED METADATING

KB - NATIONAL LIBRARY (DEN HAAG)<sup>1</sup>, GHENT UNIVERSITY<sup>2</sup>, ERASMUS UNIVERSITY ROTTERDAM<sup>3</sup>

CHRISTEL ANNEMIEKE ROMEIN<sup>123</sup>, SARA FLOOR VELDHOEN<sup>1</sup>, AND MICHEL DE GRUIJTER<sup>1</sup>

*When problems arose, small 'states' had to act swiftly. Governments may have adopted – parts of – successful legislation from neighbouring areas. Hence 'entangled histories'.*

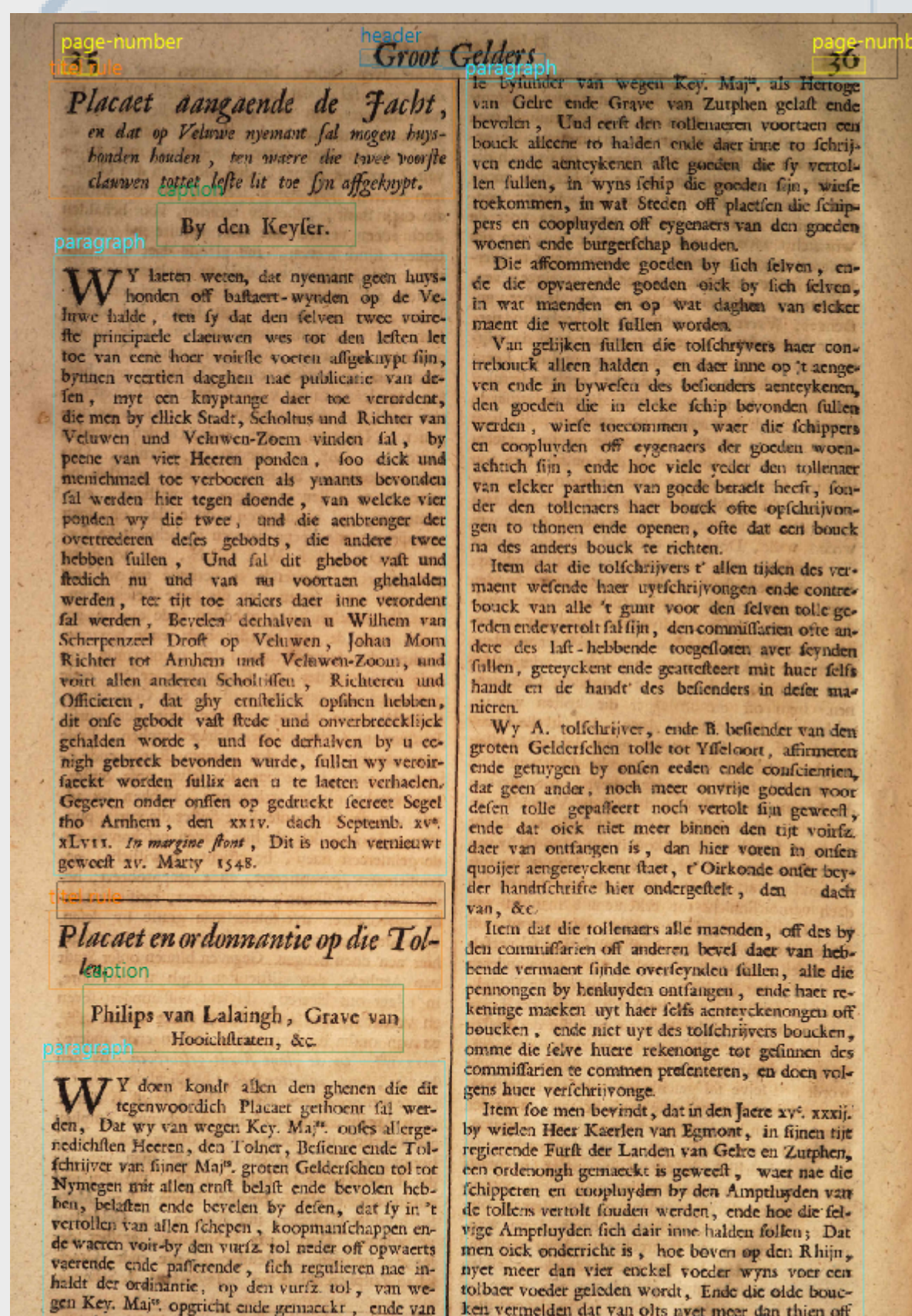
The project uses printed books of ordinances from the Low Countries (1500-1800s) to answer this hypothesis.



Early modern ordinances affixed to 'known places' and proclaimed by the city cryer. (Paalhuis c.1660).



Each of the provinces collected their (most) important ordinances in 'books of ordinances', these are now digitised and available online.



### 107 Books:

- font:
  - roman 87
  - gothic 20
- language:
  - Dutch 66
  - French 26
  - Latin 1
  - Mixed 14
- pages: 75.372
- words: ± 550 mln.

### Data presentation

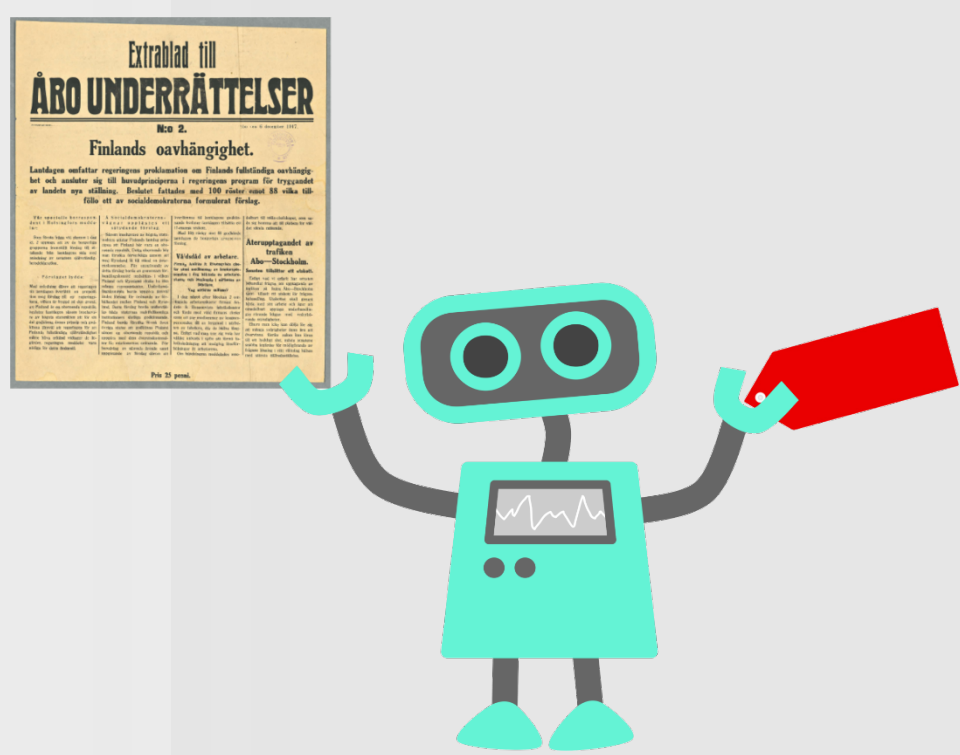
- visualisation: plot on map
- searchable data



e.g. Palladio - Stanford

### Machine-learning categorisation

- hierarchical categories created by the MPI für europäische Rechtsgeschichte (1800 in total)
- per individual law
- based on manually labelled data



Annif  
(annif.org)

### Handwritten Text Recognition-models

- language (Dutch/French)
- font (roman/gothic/variations)
- character Error Rate <5%



Transkribus

### Lay-out analysis

### Project-team National Library (NL)

Michel de Gruijter – Project Advisor  
Annemieke Romein – Primary Investigator  
Sara Veldhoen – Research Software Engineer

Contact:  
Annemieke.Romein@UGent.be