



Utrecht University

25 October 2018

Coralita, we're gonna beat ya!



Jetske Vaas and Elizabeth Haber
PhD Students at Utrecht University

Today's meeting

Where does Coralita grow?

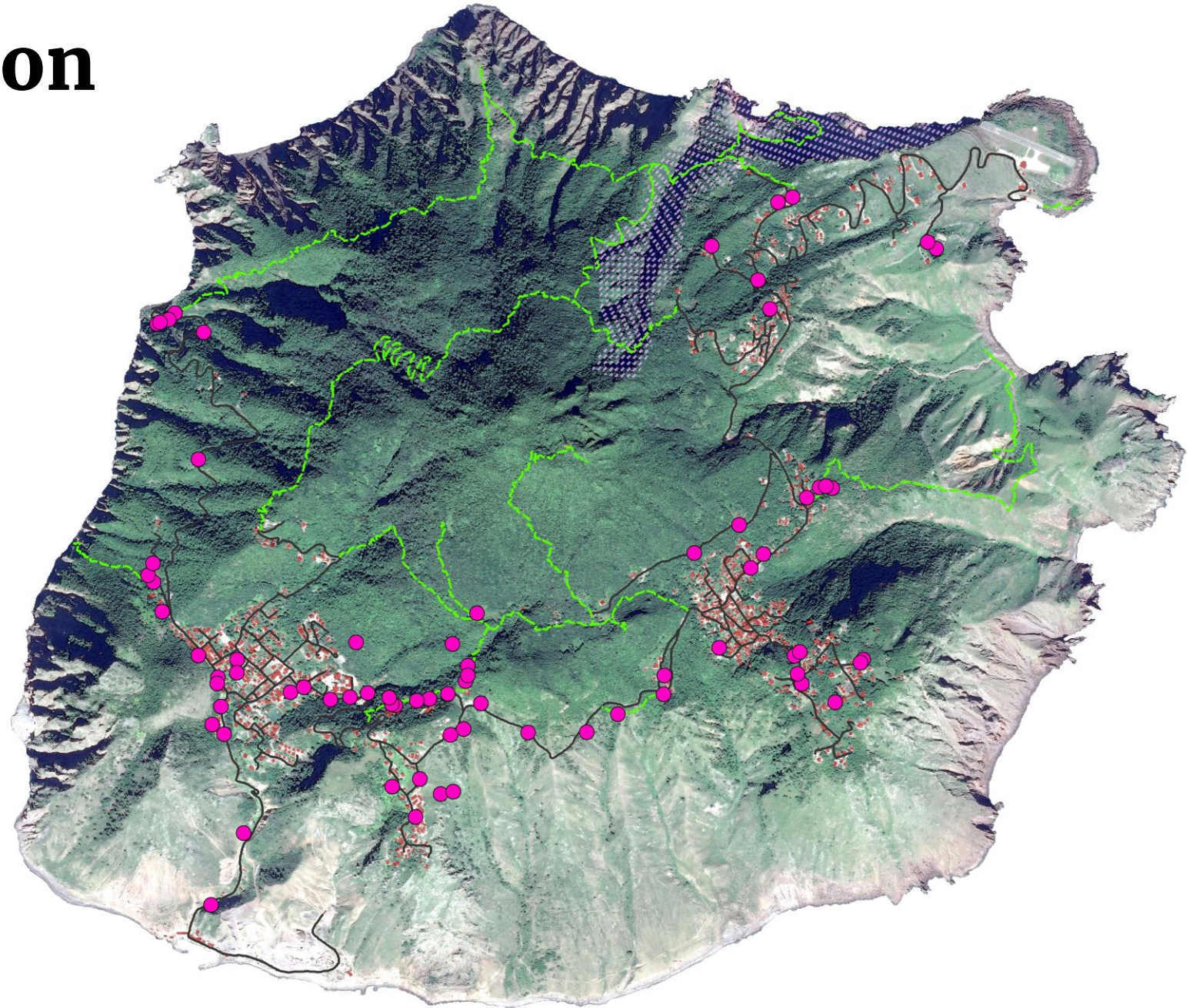
Where is it unwanted?

What do we recommend?



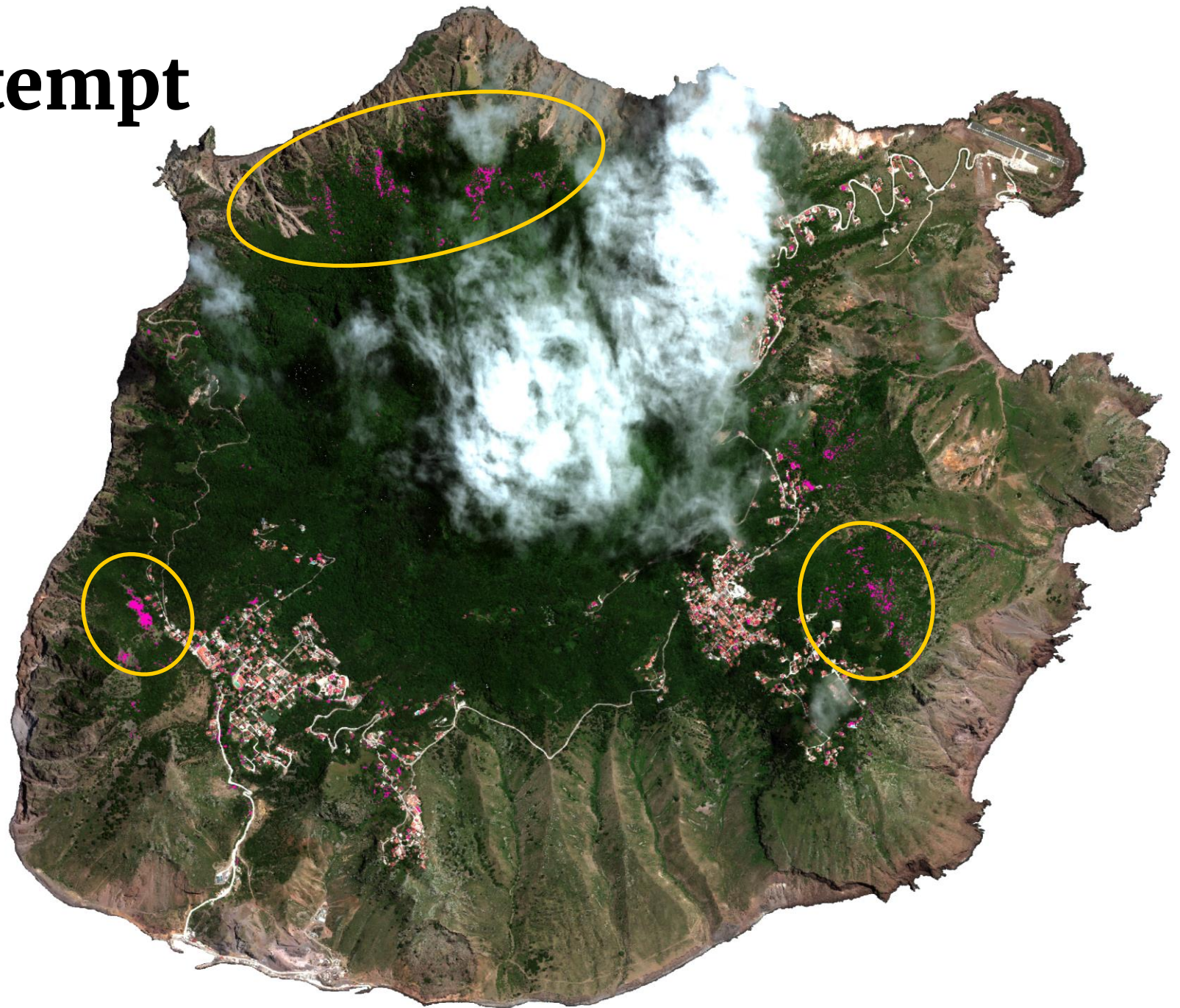
Current Distribution

- GPS points from:
 - October 2015
 - October 2016
 - October 2018
- Limitation: Only places where we have walked



Classification attempt

- WorldView3 satellite image purchased
 - 16 August 2017
- Too many errors:
 - Clouds covering Mt. Scenery
 - Topography causes difficulty in processing image
 - Prominent errors



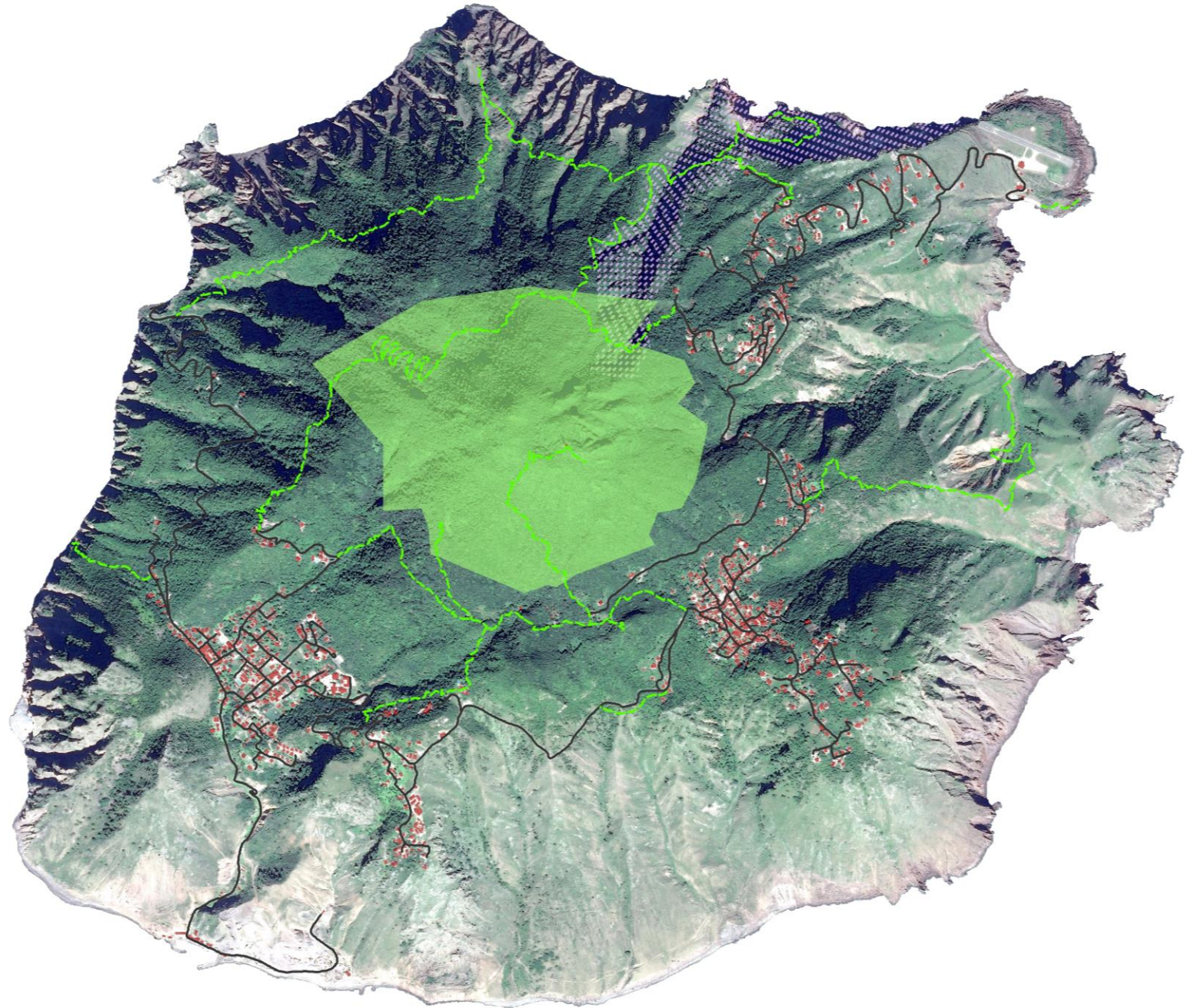
Where to act?

Ecological focus *according to Sabans*

Monitor and clean the trails

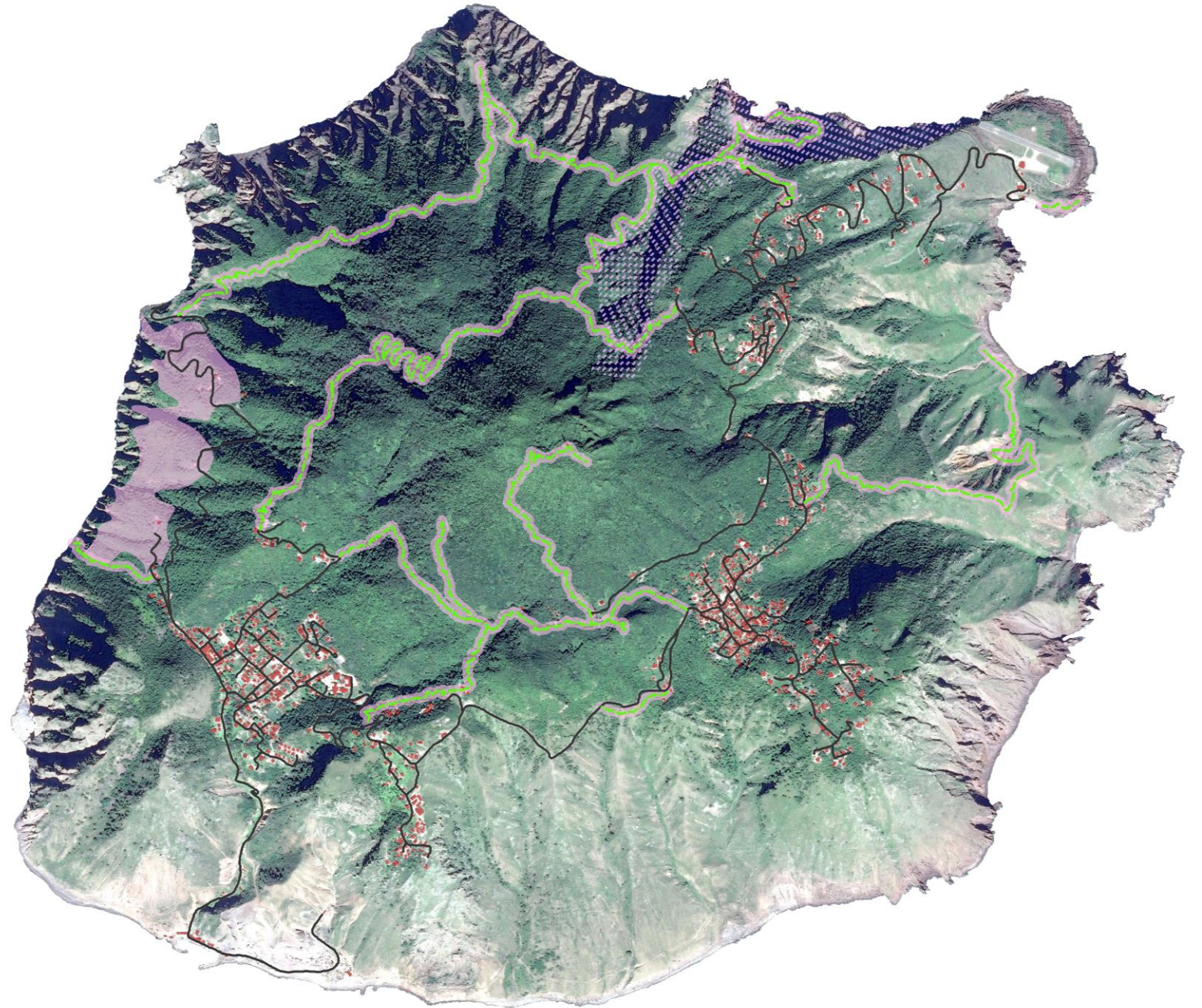
Priority areas:

- Reed Barnes' sheep pen
- Upper Crispeen trail
- Mountain road



Ecological focus

according to us

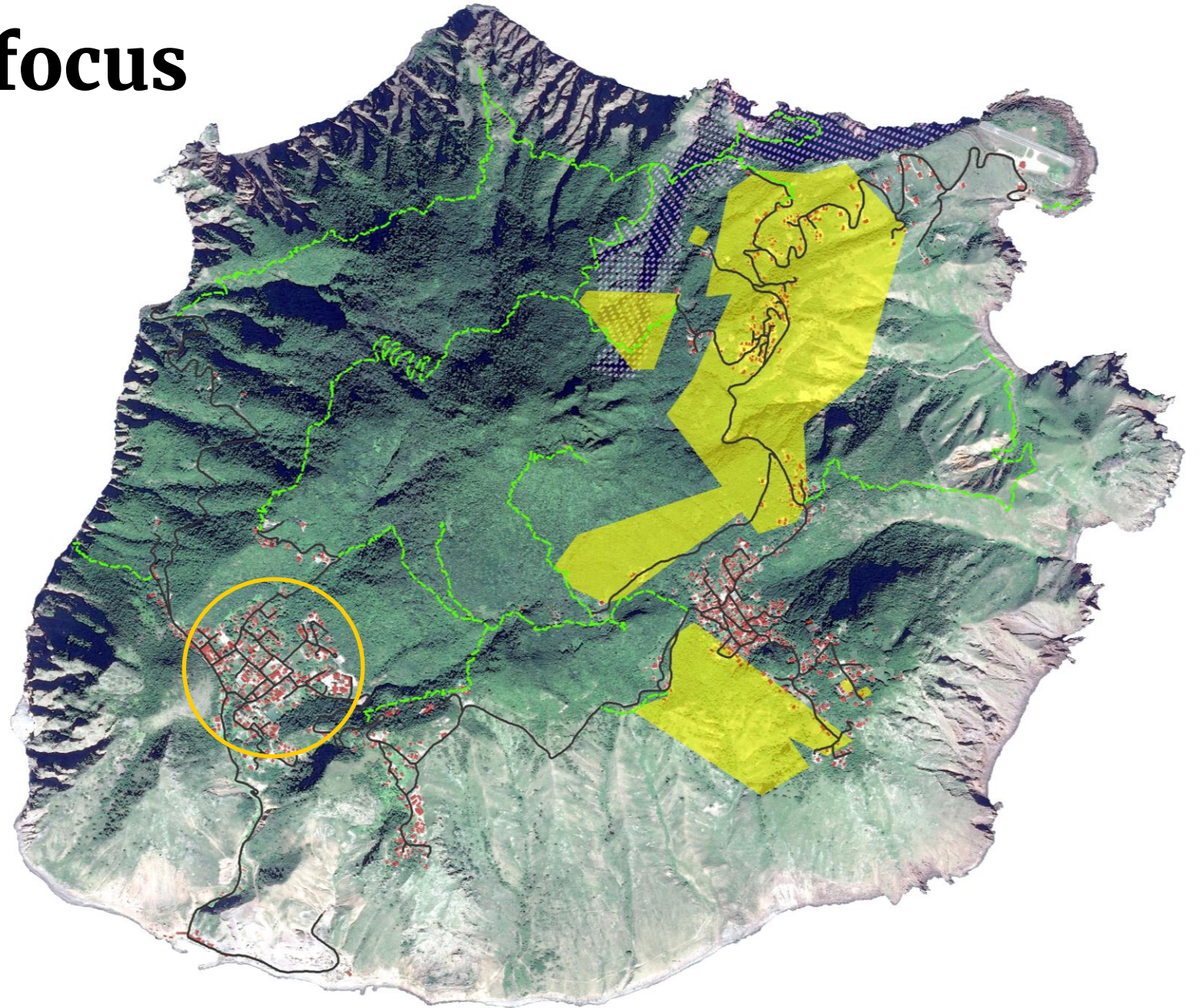


Priority areas:

- All hiking trails
- Mary's Point trailhead
- Middle Island trail

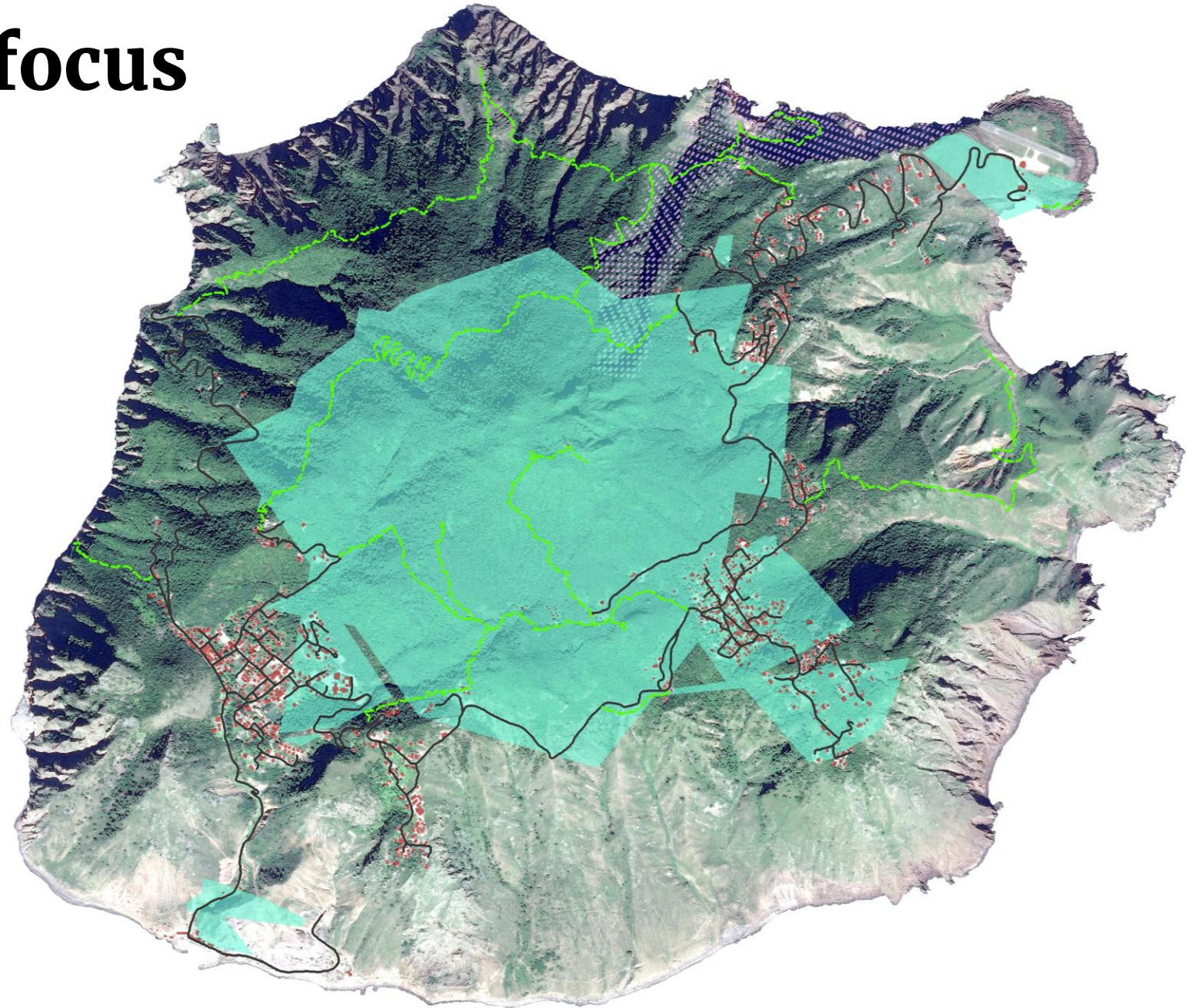
Socio-economic focus

agriculture



Socio-economic focus

tourism

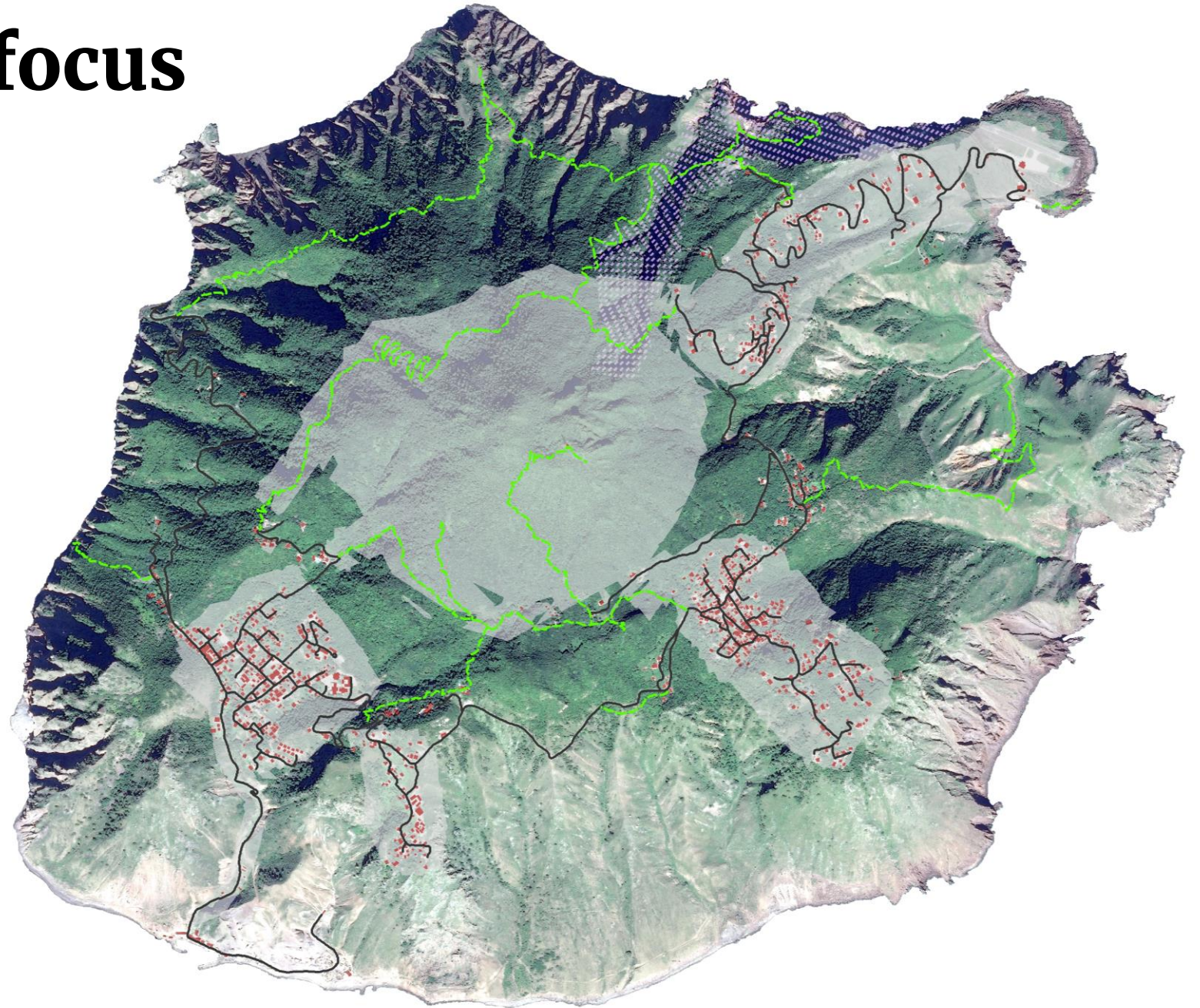


Socio-economic focus

Coralita unwanted

Same as for the nature focus, plus:

- Messaging: It IS possible to clear Coralita in small spaces
- Promote gardening
- Coralita removal assistance program

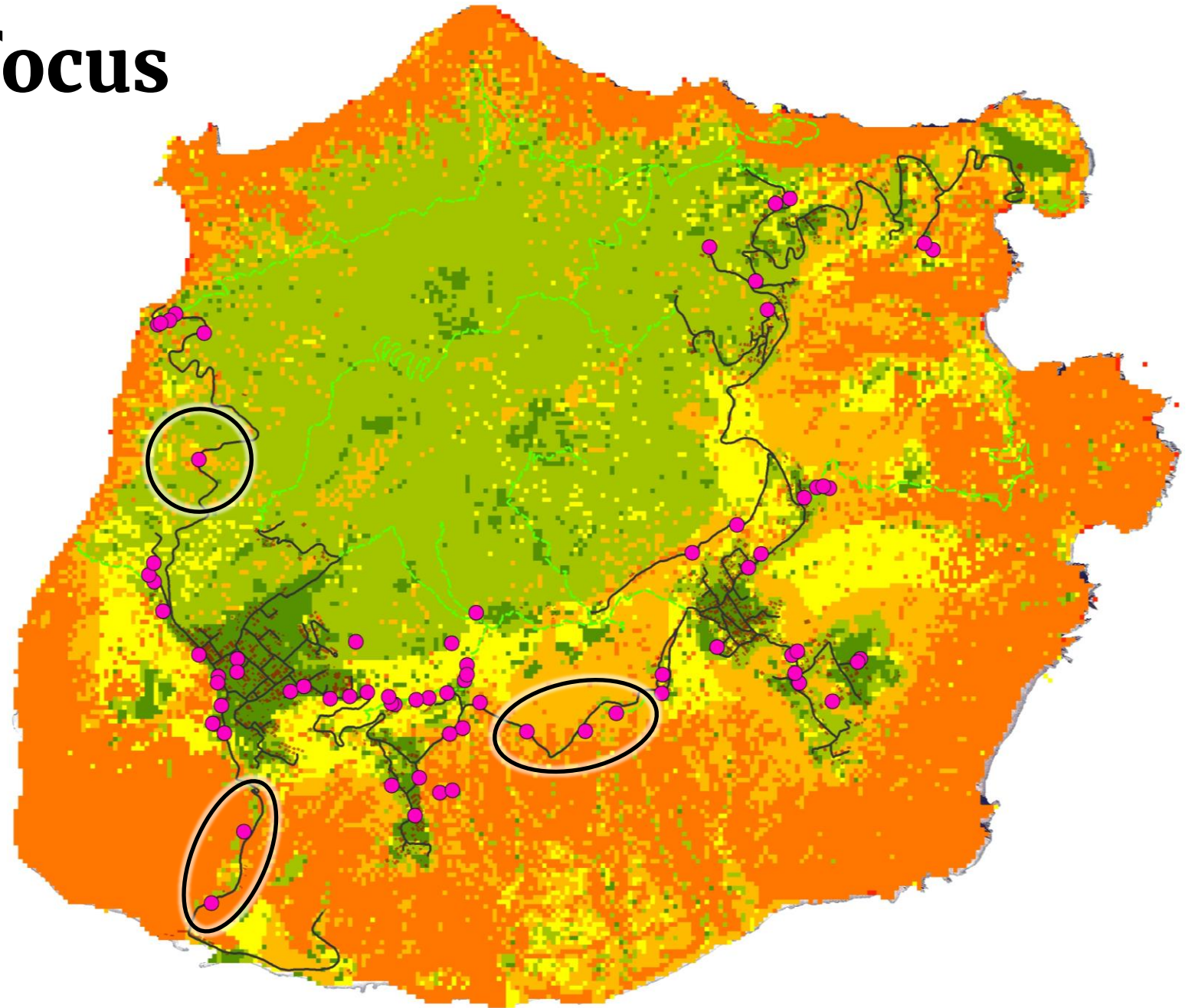


Socio-economic focus

Erosion risk

Focus areas with Coralita:

- Harbor Gut
- Road to Well's Bay
- Road from Windwardside to St. John's

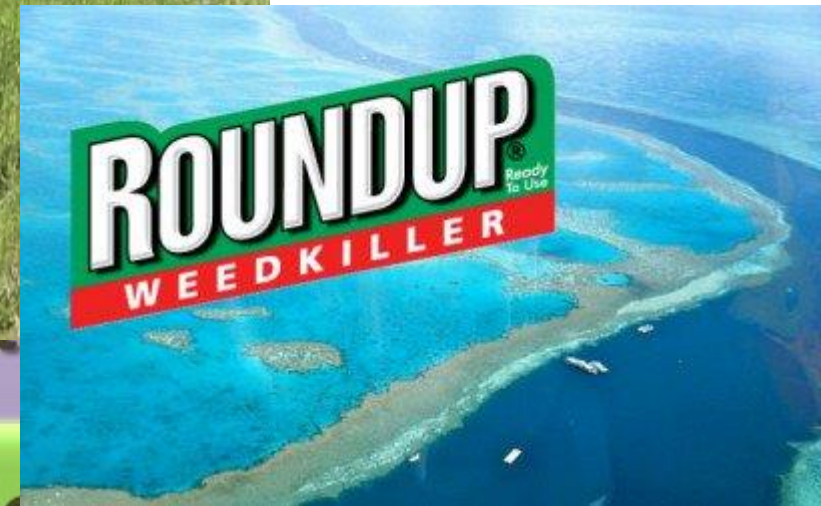


How to act?

Digging, mowing, monitoring

Control methods

Digging
Mowing
Smothering
Herbicide

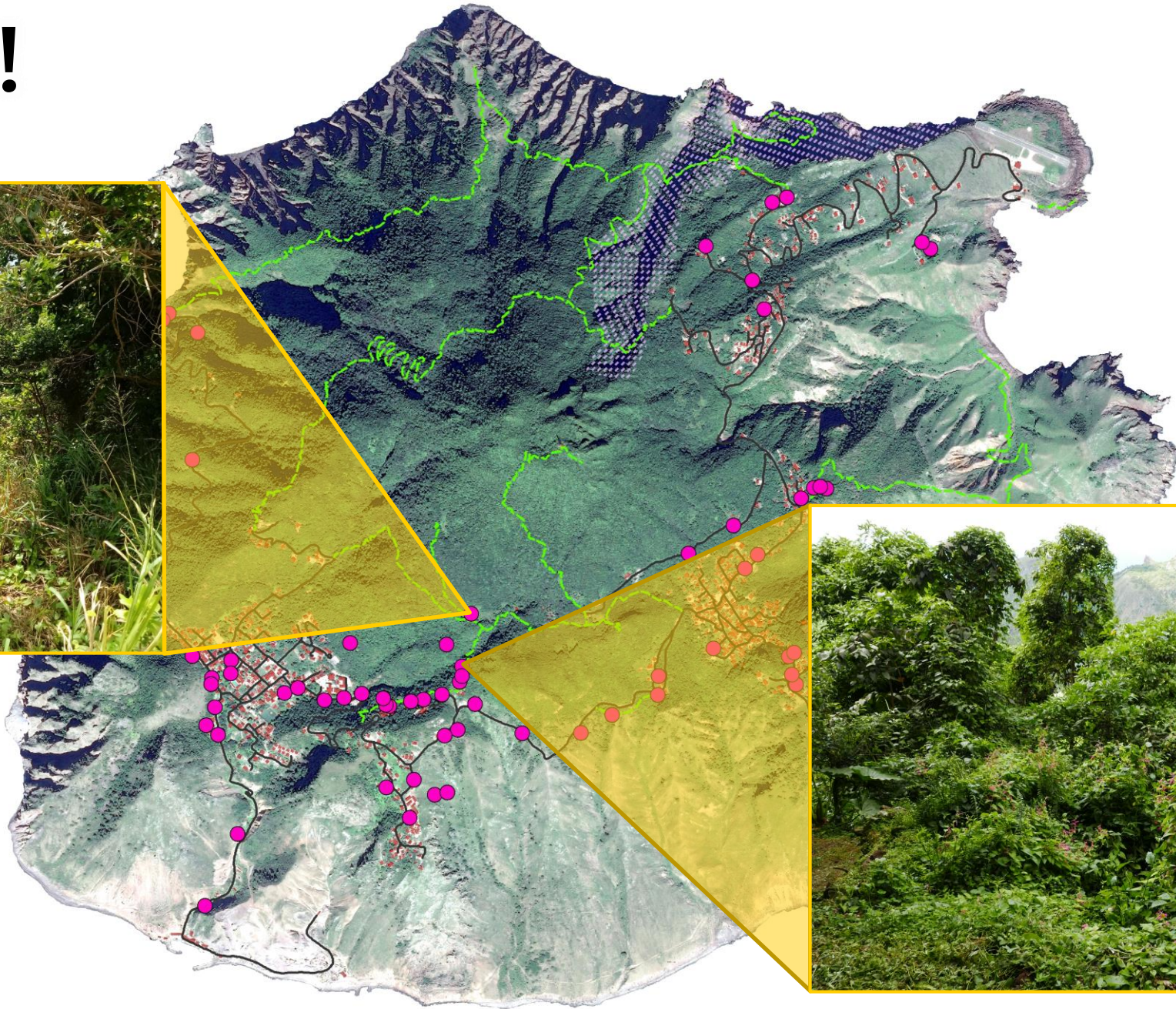


Integrated Pest Management

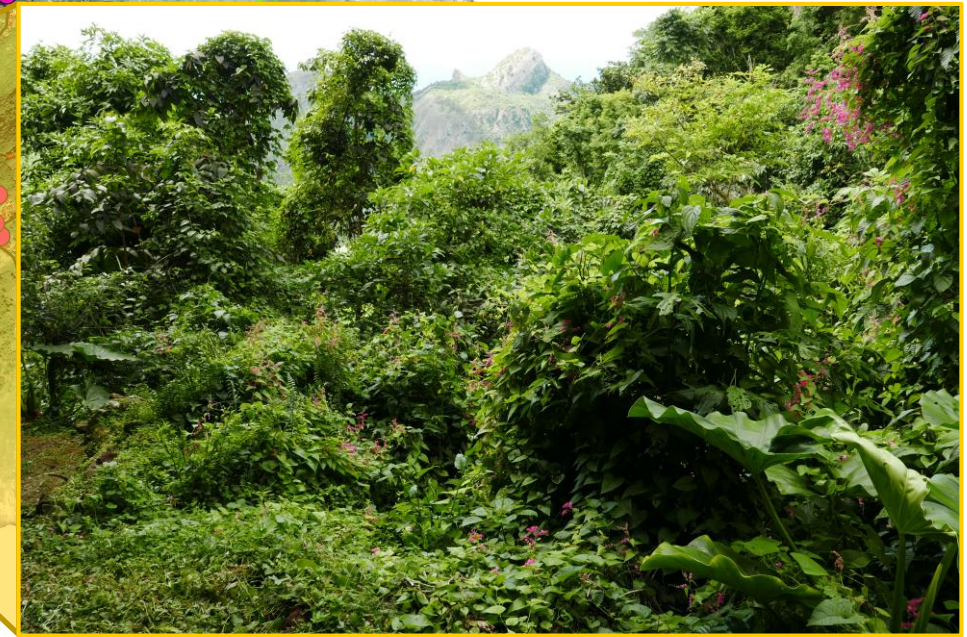
Act now!!



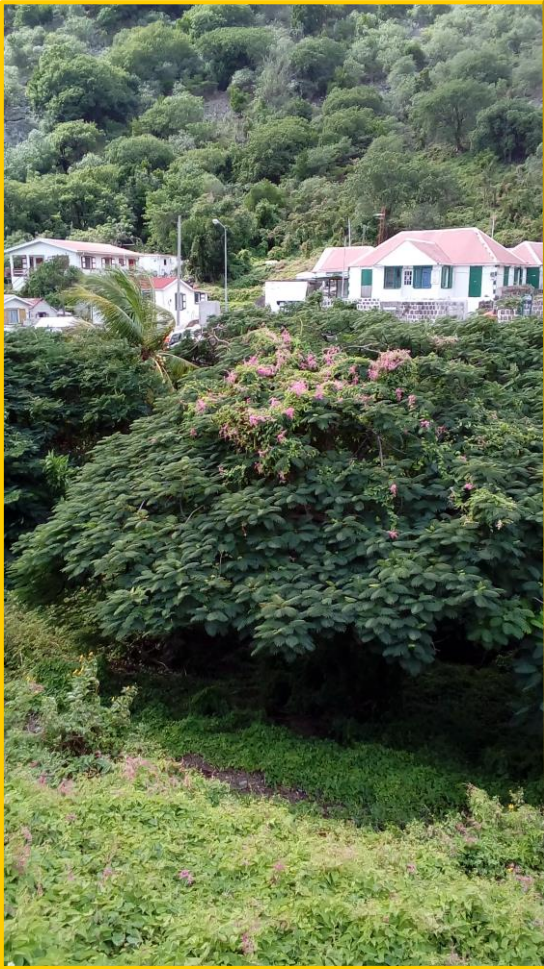
Reed Barnes' sheep pen



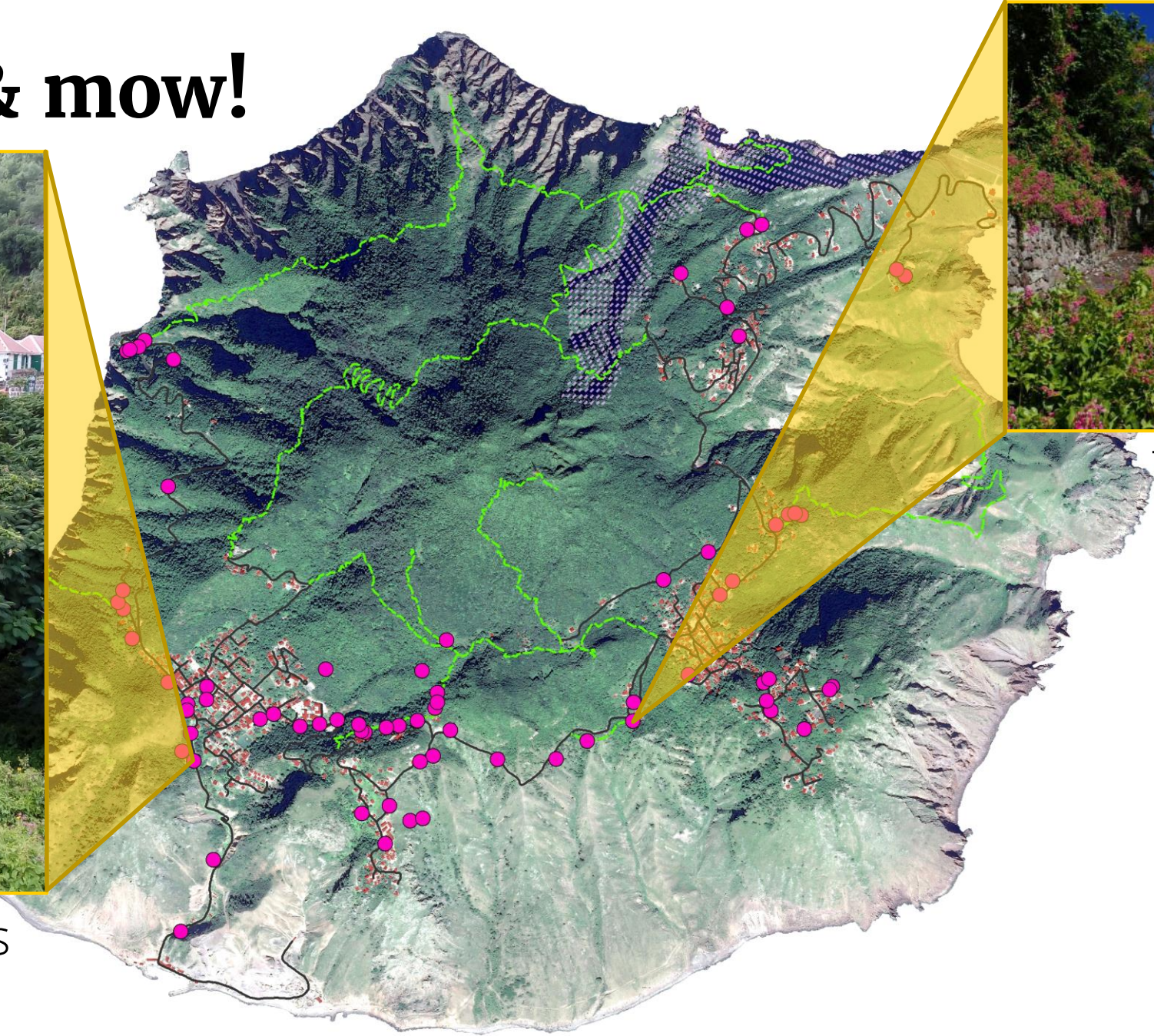
Upper Crispeen track



Pull out & mow!



Flamboyant trees
in Harbor Gut



Tamarind tree on
Dancing Path

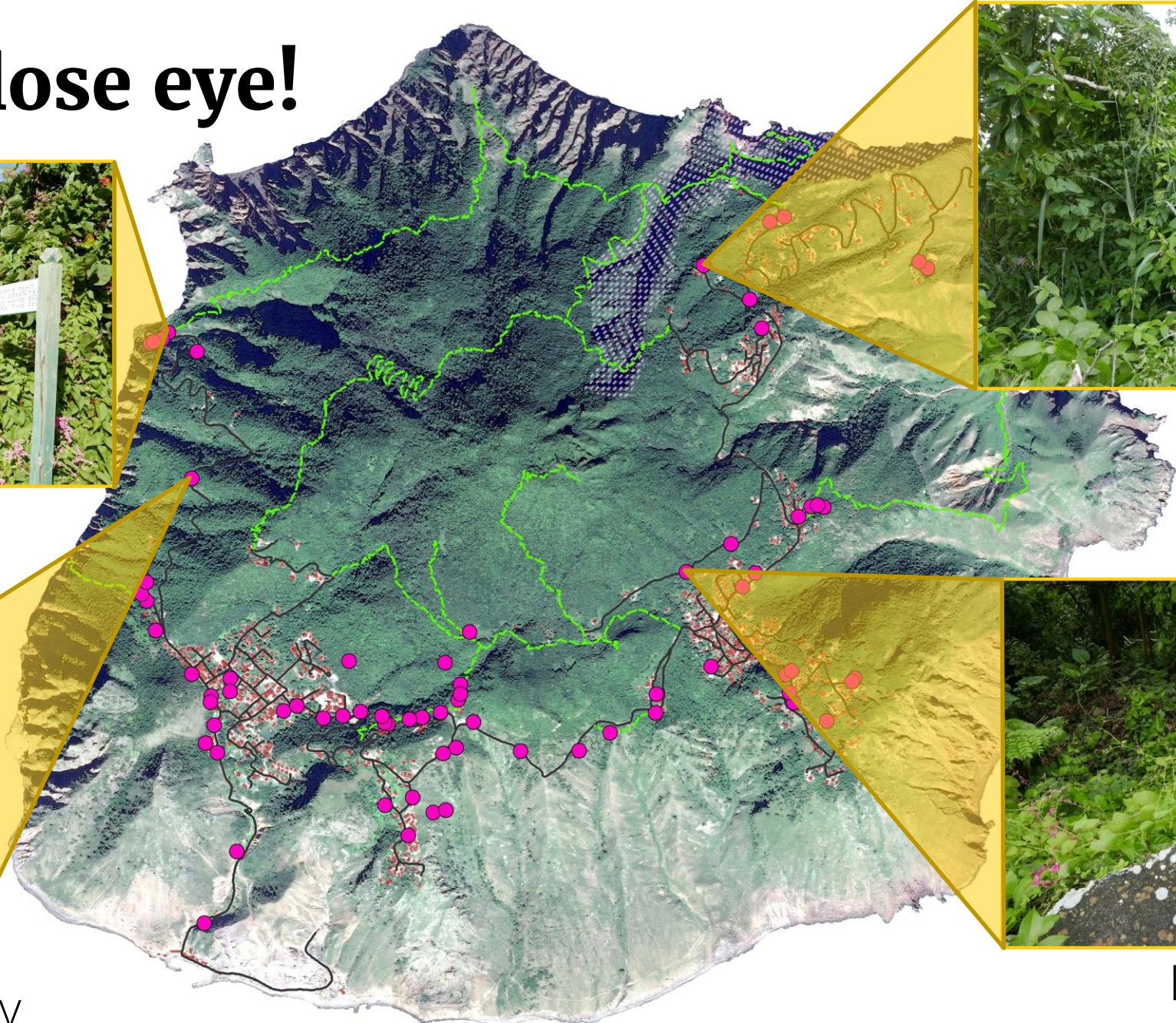
Keep a close eye!



Beginning of Mary's Point trail



Road to Well's Bay



Above Dinda's Market



Below the Mountain Road

Massive project areas

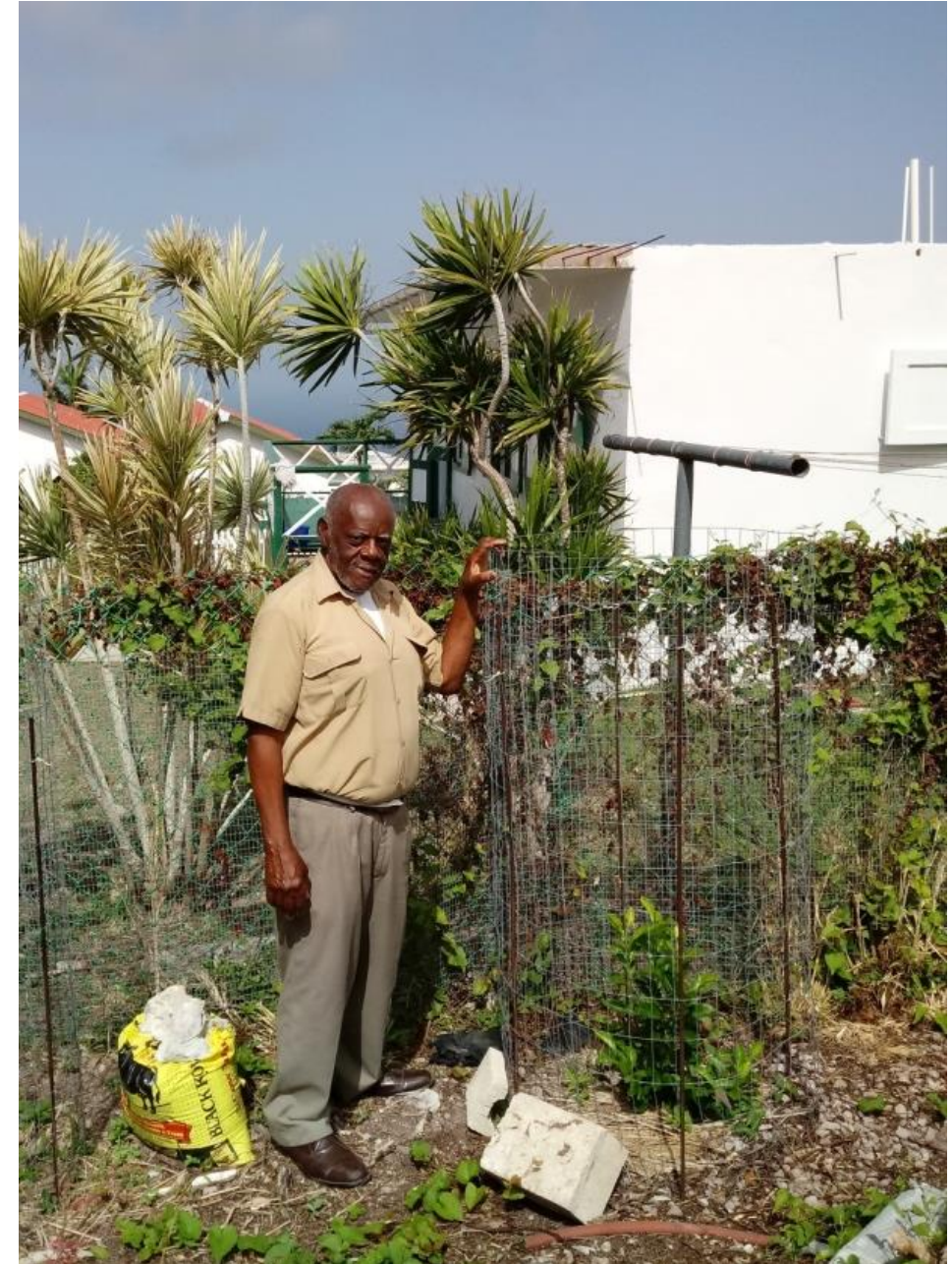


Crispeen Track



St. John's

Findings from pilot



Overview of recommendations

Recommendations to keep Coralita small...

Dig up early – prevention is the cheapest

Include removing and monitoring in trail maintenance

Promote gardening and other land-uses

Continue education on Coralita and its management

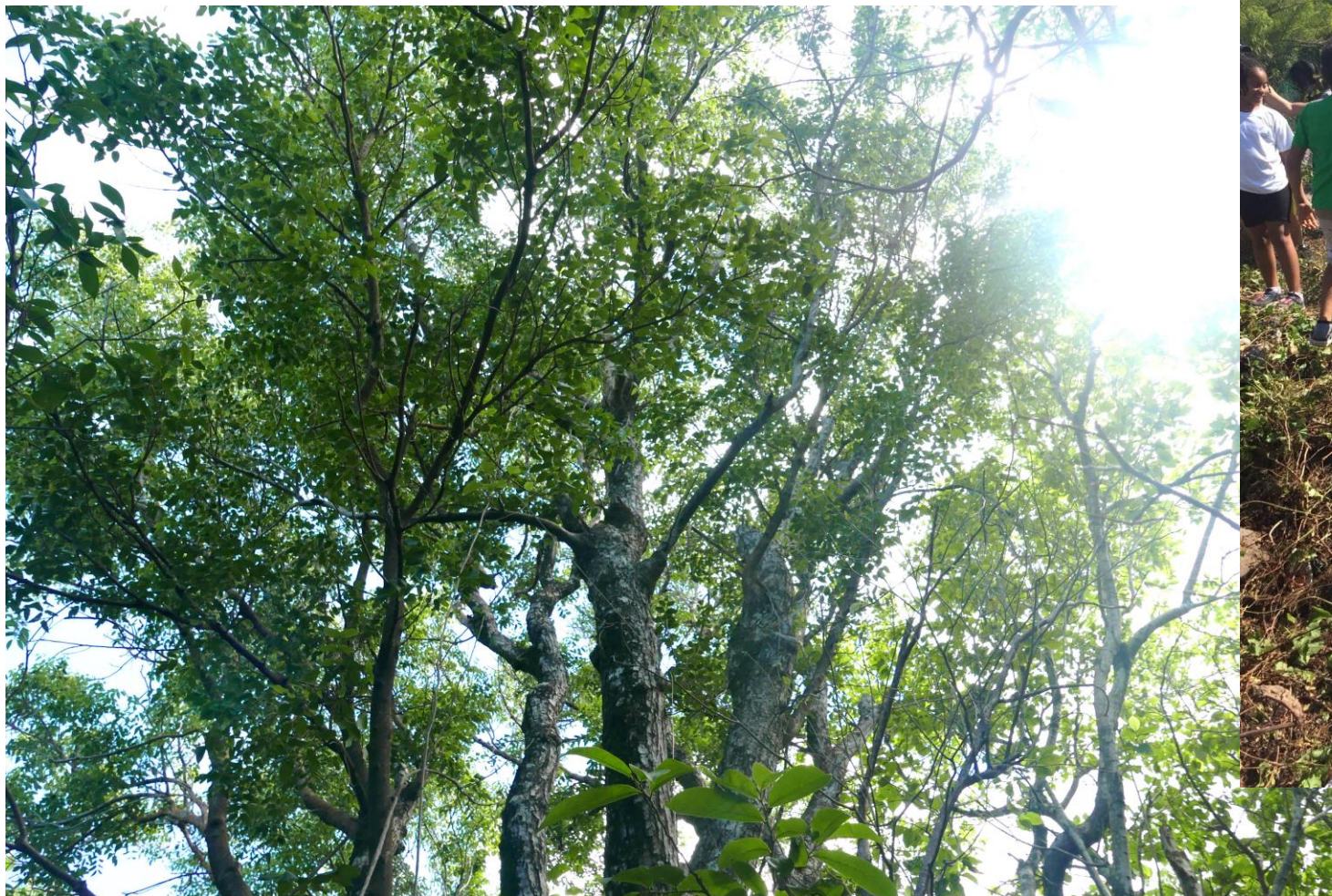
The fight is never over

Support for Coralita Converts

Coralita volunteer taskforce



...and dream big!



What can you still expect from us?



Elizabeth: Impacts of C on plant species on Saba
How to make our data available to you?

Thanks for your attention!



Elizabeth: e.a.haber@uu.nl

Jetske: j.vaas@uu.nl



CARIBBEAN NETHERLANDS SCIENCE INSTITUTE



Follow us on Facebook!

www.facebook.com/CoralitaGirls