

# Data Stewards and Digital Preservation in Everyday Research Practice



## **Esther Plomp**

Data Steward, Faculty of Applied Sciences

[e.plomp@tudelft.nl](mailto:e.plomp@tudelft.nl) / @PhDToothFAIRy

<https://orcid.org/0000-0003-3625-1357>

## **Yan Wang**

Data Steward, Faculty of Architecture and the Built Environment

[y.wang-16@tudelft.nl](mailto:y.wang-16@tudelft.nl)

<https://orcid.org/0000-0002-6317-7546>

## **Jeff Love**

Data Steward, Faculty of Industrial Design Engineering

[j.s.love@tudelft.nl](mailto:j.s.love@tudelft.nl)

# THE TU DELFT DATA STEWARDS



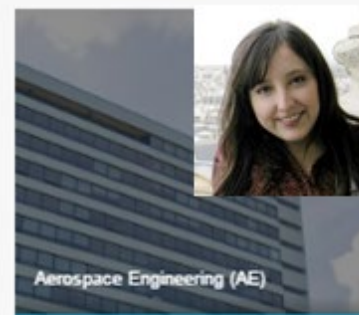
Coordinator located at the library  
A dedicated Data Steward at every faculty



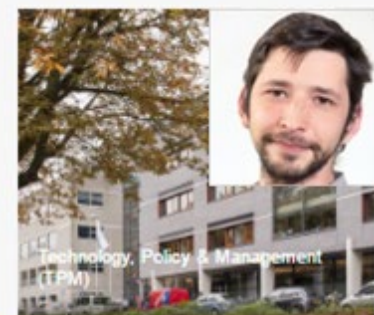
Architecture and the Built Environment



Civil Engineering and Geosciences (CEG)



Aerospace Engineering (AE)



Technology, Policy & Management (TPM)



Electrical Engineering, Mathematics & Computer Science (EEMCS)



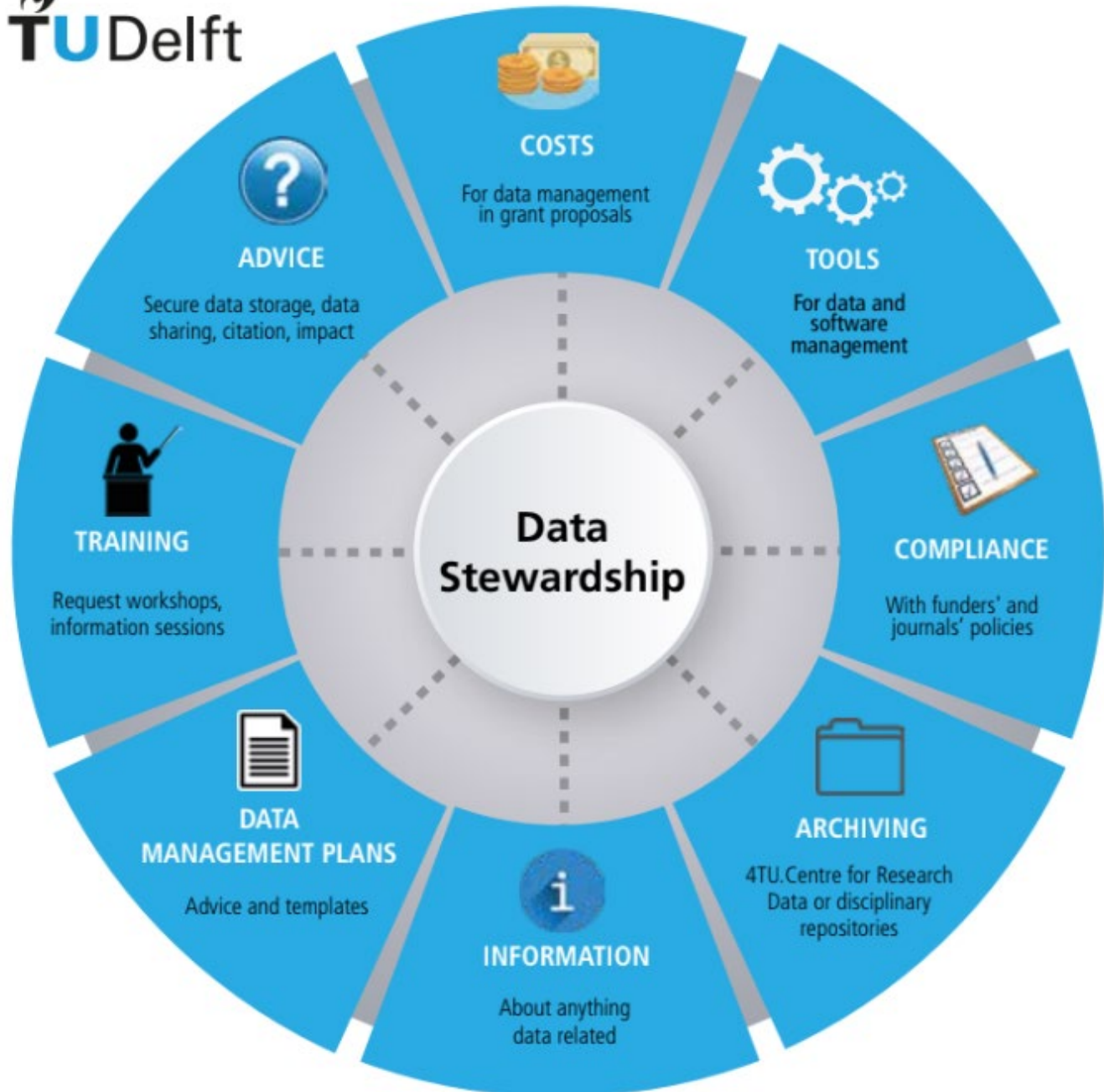
Industrial Design Engineering (IDE)



Applied Sciences (AS)



Mechanical, Maritime and Materials Engineering (3mE)



# THE TU DELFT DATA STEWARDS

## **Mediators/facilitators/consultants**

- suggesting improvements to practices and gaining insight on implementations
- raising awareness

‘incremental cultural change’



# RESEARCH DATA MANAGEMENT POLICIES AT TU DELFT

## TU Delft Research Data Framework Policy

- Roles and responsibilities at the university level
  - PhD students required to deposit their underlying research data
- Published (<https://doi.org/10.5281/zenodo.2573160>)

4TU. CENTRE FOR  
RESEARCH DATA

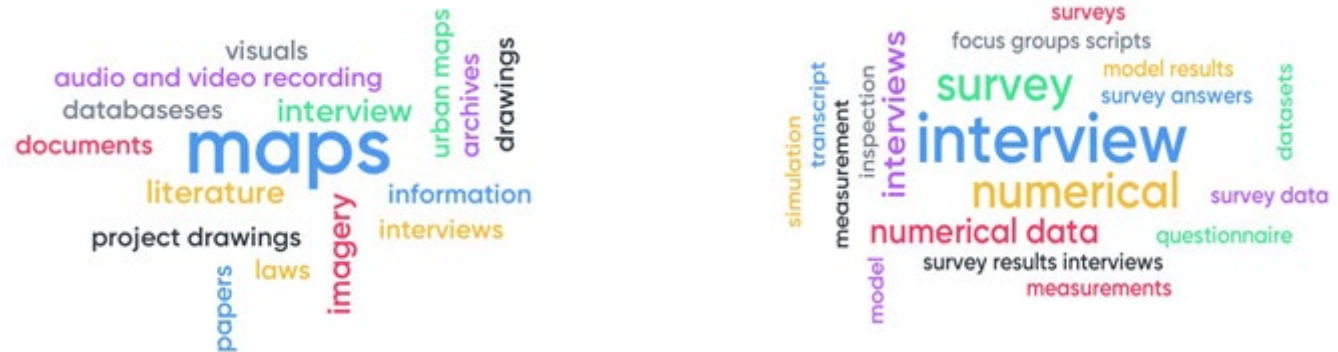
## 8 separate Faculty Data Policies

- Roles and responsibilities at the faculty level
- Reflecting disciplinary differences
- *In development*

<https://doi.org/10.5281/zenodo.2684278>

# REACHING OUT TO RESEARCHERS

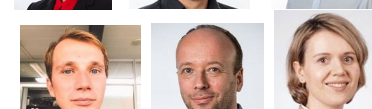
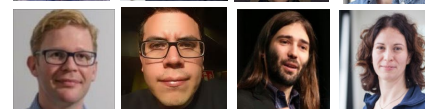
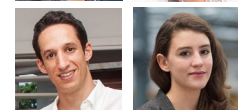
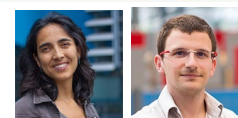
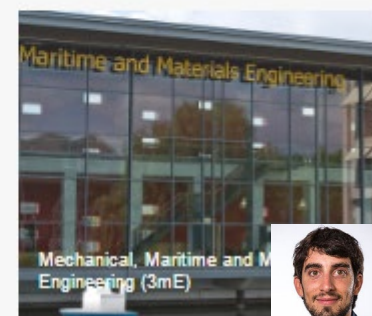
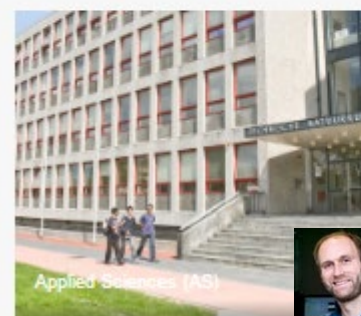
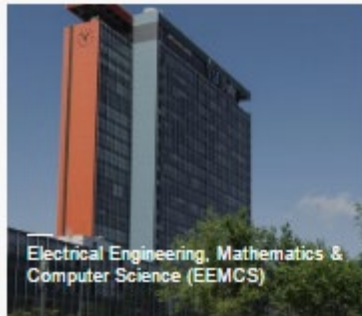
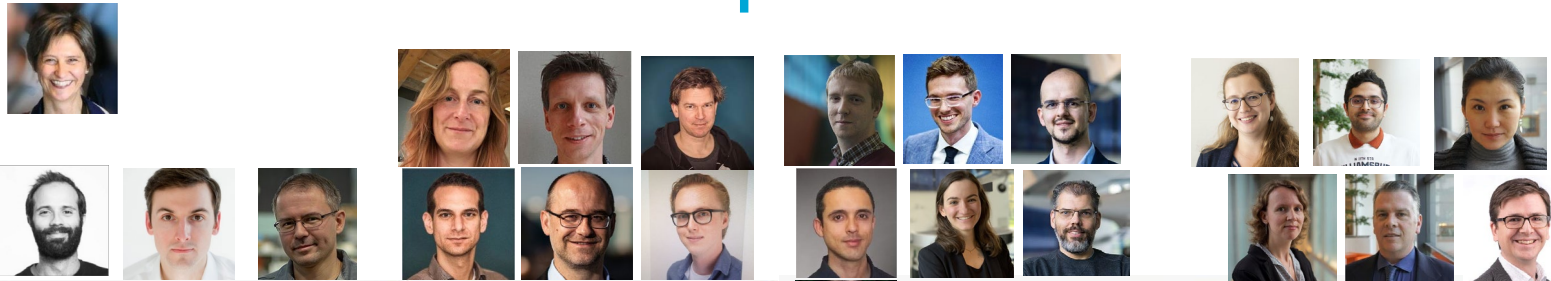
- Disciplinary differences



Research data types in two departments at the Faculty of Architecture and the Built Environment.

- Training in data structuring and preservation

# 47 Data Champions at TU Delft



<https://www.tudelft.nl/en/library/current-topics/research-data-management/r/data-stewardship/data-champions/our-data-champions/>

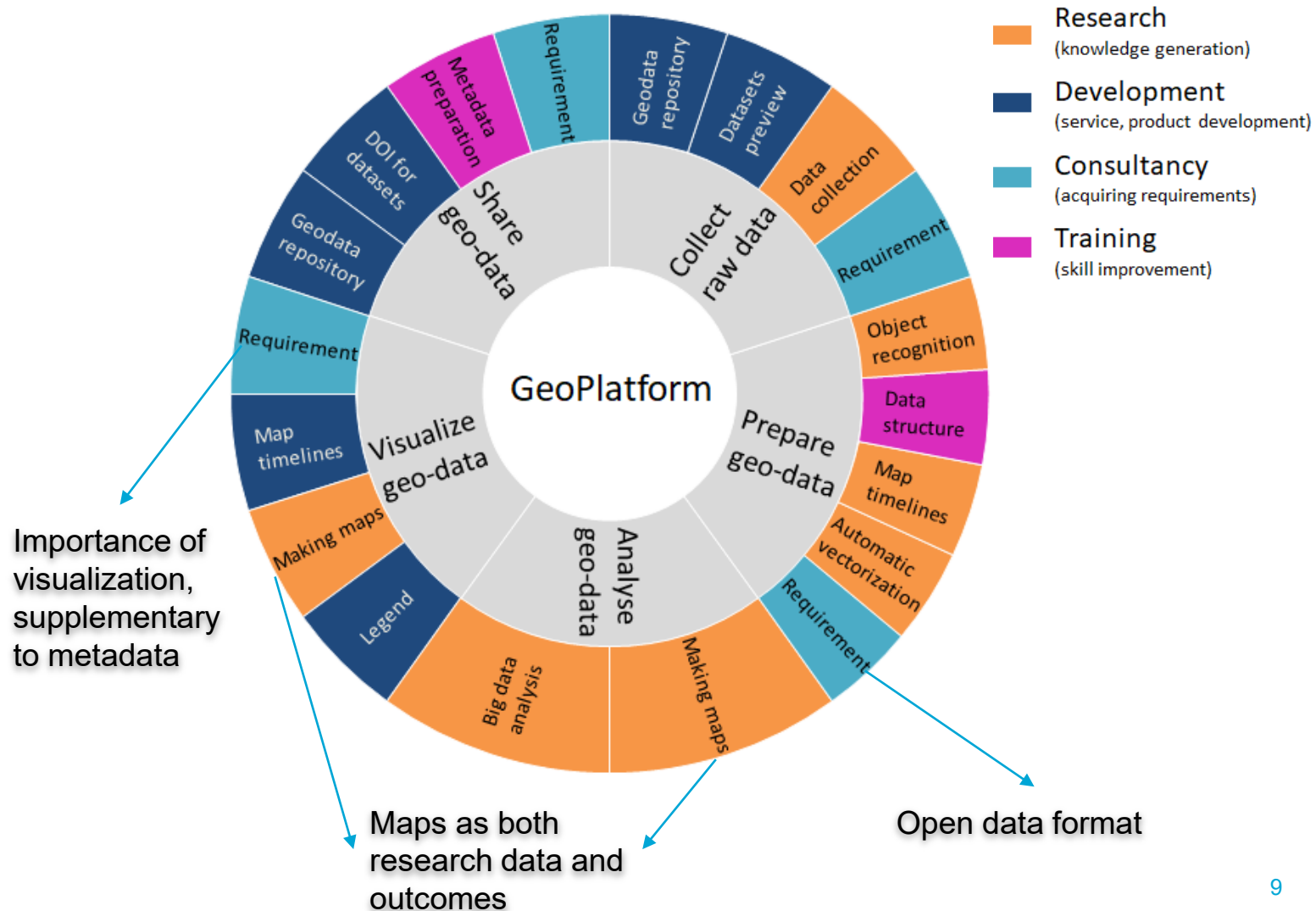
# CASE: Webrecorder



- **Goal:** preserving research websites, especially end-of-life
- **Selection criteria:**
  - Affiliated with a member of **IDE**
  - Hosted outside of the **TU Delft network**
- Had to **retain structure** & ‘crawlable’ functionality
- Several candidate sites
  - **Design & Emotion Society**  
(now defunct but preserved in part)



# CASE: Digital Humanities at TU Delft and GIS Platform



# Questions or more info?

[datastewards@tudelft.nl](mailto:datastewards@tudelft.nl)

Project updates:

<https://openworking.wordpress.com/data-stewardship/>

Zenodo collection of Data Stewards outputs:

<https://zenodo.org/communities/datastewards/>

Data Stewardship:

[www.tudelft.nl/library/datastewardship/](http://www.tudelft.nl/library/datastewardship/)

4TU.Centre for Research Data:

<http://researchdata.4tu.nl/en/home/>

2019 goals:

<https://openworking.wordpress.com/2019/02/20/data-stewardship-goals-for-2019/>