

Next Generation of Scalable and Sustainable DH Services

Zach Coble
NYU Libraries

Let us help
you capture
your next
digital research
project.



Digital Scholarship Services help you
incorporate digital scholarship tools and
methods into research and teaching.

We help you to:



Conceptualize

Free one-on-one consultations for getting started



Create

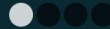
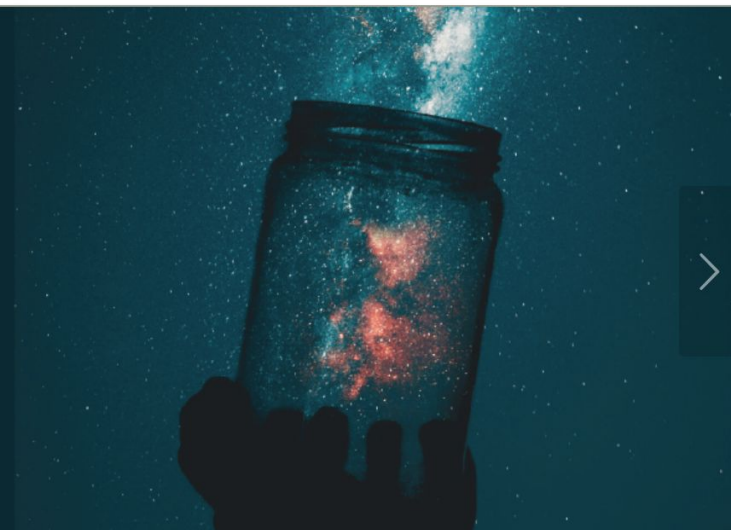
Break out of traditional research models
Make your research come alive in new and emerging



Connect

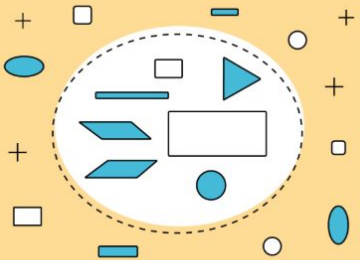
Find collaborators, services, and software
Share your work with NYU and the world

Let us help you capture < your next digital research project_



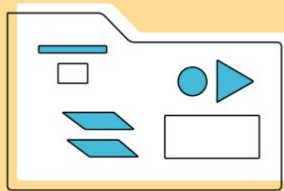
[Request Account](#)

[Login \(Existing Users\)](#)



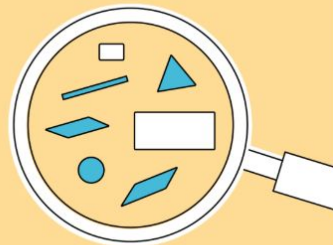
1. Find & Collect

Identify data needs; search, collect, and evaluate data sources



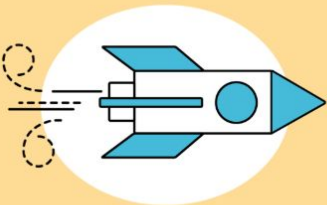
2. Store & Manage

Create a data management plan; store and manage data throughout your research



3. Analyze

Check, validate, and clean data; analyze and interpret; and plan and prepare outputs



4. Make

Use data outputs to create, explore, and visualize research findings



5. Publish & Preserve

Identify appropriate formats for storing and publishing data



- .TemporaryItems
- proquest
- proquest_congressional
- proquest_hnp

Connect to Server

smb://storage.rcs.nyu.edu/ds_collections

Favorite Servers:

+ - ⚙️ ?

Browse Connect

- AmericanHe...ishMessenger
- AmericanIsraelite
- AtlantaConstitution
- AtlantaDailyWorld
- BaltimoreAfroAmerican
- BostonGlobe
- ChicagoTribune
- ChineseNew...perCollection
- ChristianScienceMonitor
- contents.tsv
- GuardianObserver
- HartfordCourant
- IrishTimes
- JewishAdvocate
- JewishExponent
- LosAngelesTimes
- Newsday
- NewYorkAmsterdamNews
- NewYorkTimes**
- NewYorkTrib...eraldTribune
- NorfolkJournalGuide
- PhiladelphiaTribune
- PittsburghCourier
- SanFranciscoChronicle
- TimesOfIndia
- WallStreetJournal
- WashingtonPost
- NYT_20171...01_00001.zip
- NYT_20171...02_00002.zip
- NYT_20171...03_00003.zip
- NYT_20171...06_00004.zip
- NYT_20171...08_00005.zip
- NYT_20171...09_00006.zip
- NYT_20171...11_00007.zip
- NYT_20171...12_00008.zip
- NYT_20171...13_00009.zip
- NYT_20171...33_00001.zip
- NYT_20171...37_00002.zip
- NYT_20171...38_00003.zip
- NYT_20171...40_00004.zip
- NYT_20171...41_00005.zip
- NYT_20171...42_00006.zip
- NYT_20171...43_00007.zip
- NYT_20171...44_00008.zip
- NYT_20171...46_00009.zip
- NYT_20171...47_00010.zip
- NYT_20171...50_00011.zip
- NYT_20171...52_00012.zip
- NYT_20171...53_00013.zip
- NYT_20171...54_00014.zip
- NYT_20171...55_00015.zip
- NYT_20171...57_00016.zip
- NYT_20171...58_00017.zip
- NYT_20171...00_00018.zip
- NYT_20171...01_00019.zip
- NYT_20171...04_00020.zip
- NYT_20171...05_00021.zip

Service Band 3

Description: This service band provides a feature-rich publication environment with preservation and curation options available.

Target users: Researchers and library curators looking to store data and digital assets in a stable environment where they are easily discoverable; researchers looking to comply with open access standards and/or open access/open data policies mandated by funding agencies.

Characteristics:

permanent citation
discovery
metadata
access
long-term preservation

Options:

format migration
formal archival information package (AIP, e.g. as in R*)
dark content or unpublished/private data
embargo
option to share with limited group, e.g. individuals, all of NYU
contextual rendering
geodiscovery
usage data about collection/file access and downloads
ability to expose content through multiple paths, e.g. API's
option to add to metadata (by someone other than original depositor)
self-service deposit option
facilitation of internal and external discovery (BobCat, Worldcat, Google, DPLA)
versioning