

Linked (Open) Data for Research Infrastructures

Luc Boruta, Thunken Inc.
luc@thunken.com — @thunkenizer
MERIL Conference, Lisbon, 2019/06/25

Sustainability for RI Metadata Projects

- MERIL is coming to a close
 - Who will use the outputs, and how?
 - Who will maintain the data, and how?
 - Will newer projects contribute back to maintain a core DB?
- How do we link RI data with the rest of the scholarly web?
- Sustainability = FAIRness + Governance + Engagement?





Yeah Buffy, what are we gonna do now?



FAIR Principles for Digital Assets

- Findable
 - Globally unique and persistent IDs (= PIDs), rich metadata, indexing
- Accessible
 - Open, free, and standardized protocols
- Interoperable
 - Standardized vocabularies, references to other metadata
- Reusable
 - Detailed provenance, clear usage license



Metadata 2020 Principles

- **Compatible**
 - Provide a guide to content for machines and people
- **Complete**
 - Reflect the content, components and relationships as published
- **Credible**
 - Be of clear provenance, trustworthy and accurate
- **Curated**
 - Reflect updates and new element



European RI Metadata before MERIL

🙄 Findable

🙄 Accessible

🙄 Interoperable

🙄 Reusable

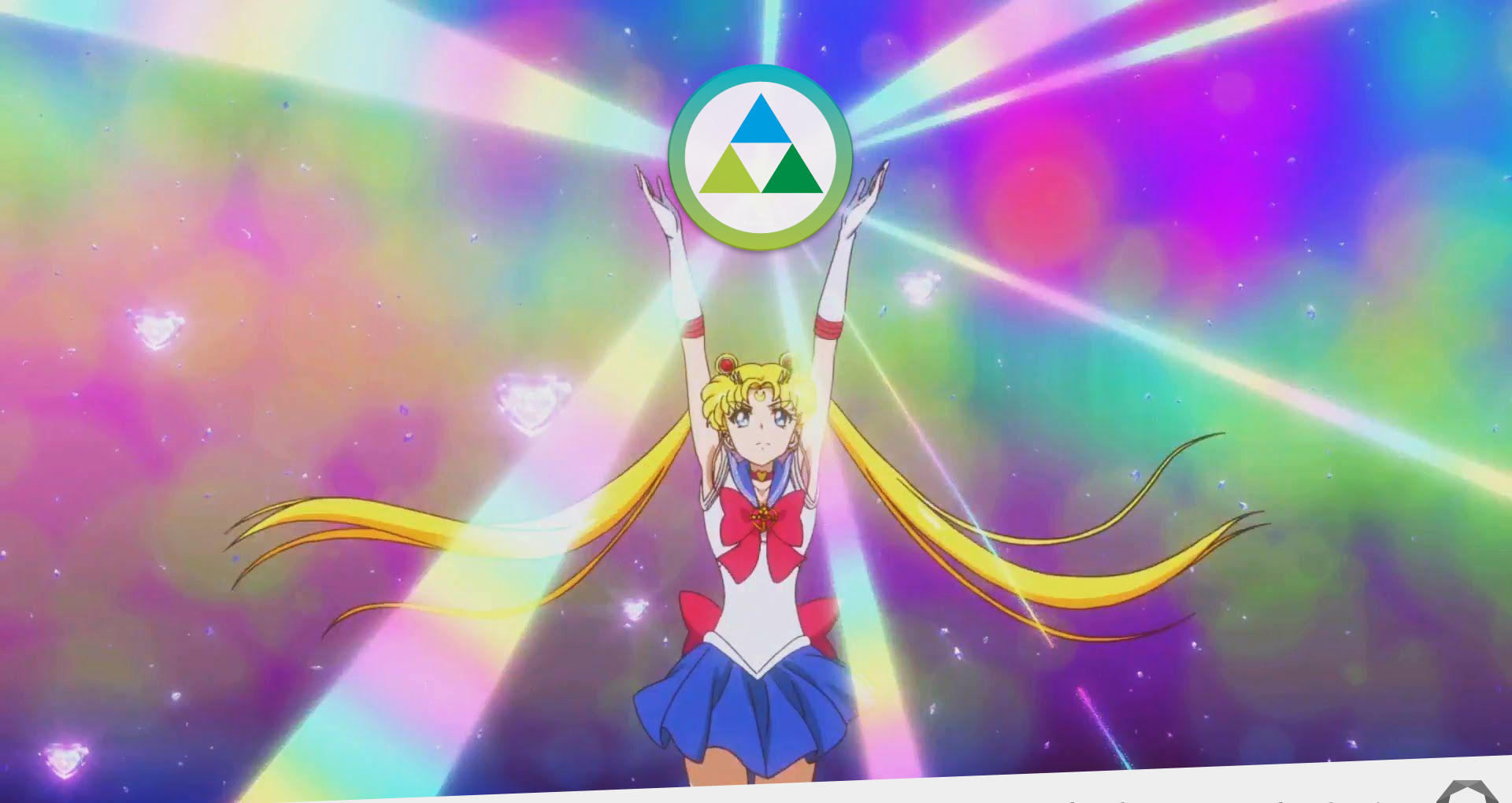
🙄 Compatible

🙄 Complete

🙄 Credible

🙄 Curated





European RI Metadata with MERIL



Findable



Accessible



Interoperable



Reusable



Compatible



Complete



Credible



Curated



MERIL: Metadata 20/20 Hindsight

- Findability
 - No PIDs for RIs
- Interoperability
 - No PIDs for other fields in the model (organizations, people, works, etc.)
- Reusability/Compatibility
 - The CC BY-NC-ND license is “viral” and (thus) restrictive
- Curation
 - Curation is expensive and tedious



Quick Introduction to Linked (Open) Data

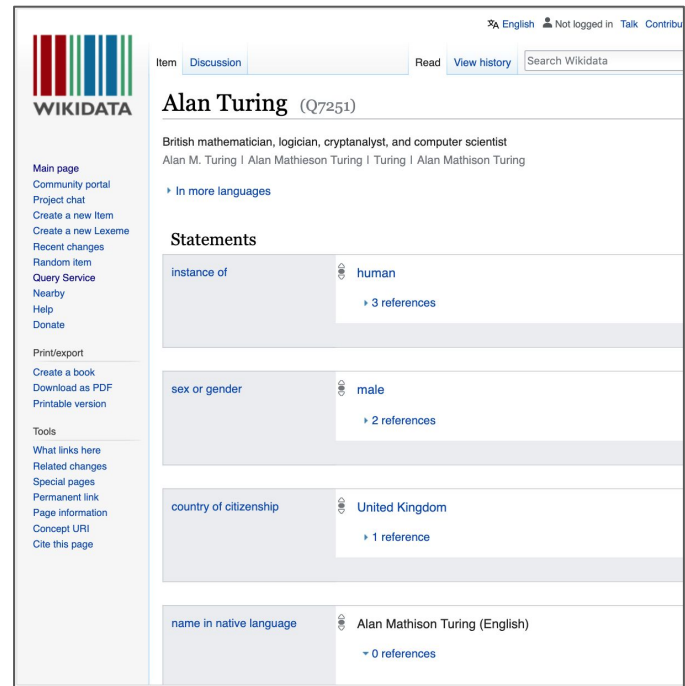
- Semantic web = web of linked data
 - Rather than a web of documents
 - Use URIs (\approx PIDs) as names for things
 - Include links to other URIs so that users can discover more things
- Benefit: query data + draw inferences using vocabularies
- Example: Wikipedia vs. Wikidata



Quick Introduction to Linked (Open) Data



The screenshot shows the Wikipedia article for Alan Turing. The page title is "Alan Turing" and it is categorized as an "Article". The article text begins with "Alan Mathison Turing OBE FRS (/ˈtjʊərɪŋ/; 23 June 1912 – 7 June 1954) was an English mathematician, computer scientist, logician, cryptanalyst, philosopher and theoretical biologist." It mentions his work on the Turing machine and his role at Bletchley Park during the Second World War. The article also notes his homosexuality and the crime in the UK.



The screenshot shows the Wikidata page for Alan Turing (Q7251). The page title is "Alan Turing (Q7251)" and it is categorized as an "Item". The page contains a list of statements, including "instance of" (human), "sex or gender" (male), "country of citizenship" (United Kingdom), and "name in native language" (Alan Mathison Turing (English)).





Today's PID is tomorrow's bacon



PIDs for RIs

- No standard (global, unified) PID for RIs yet
- MERIL: current IDs are not globally unique nor persistent
- Recommendation: use the Handle System
 - Efficient, extensible, and secure identifier and resolution services
 - Integrations: digital libraries, scholarly web, internet of things, defense systems, grid computing, etc.
 - Backbone of the DOI System (DOIs are Handles)



Knowledge Graphs



Knowledge Graphs

- Knowledge graph \approx knowledge base \approx ontology
- Non specialized graphs, e.g. Wikidata and DBpedia
- Knowledge graphs for the scholarly web
 - **FREYA** (H2020): PIDs only
 - **Cobaltmetrics** (Thunken): PIDs and non persistent IDs
- No PIDs for RIs = no RIs in these graphs
 - Applications: content discovery, scientometrics, publisher analytics, etc.



Wishes to the FAIRy Godparent

- Data model and API: PIDs, PIDs everywhere!
 - PIDs for RIs
 - Other PIDs, e.g. DOI, GRID, ORCID
- User interface: use PIDs to autocomplete forms
- License: CC0 or CC BY

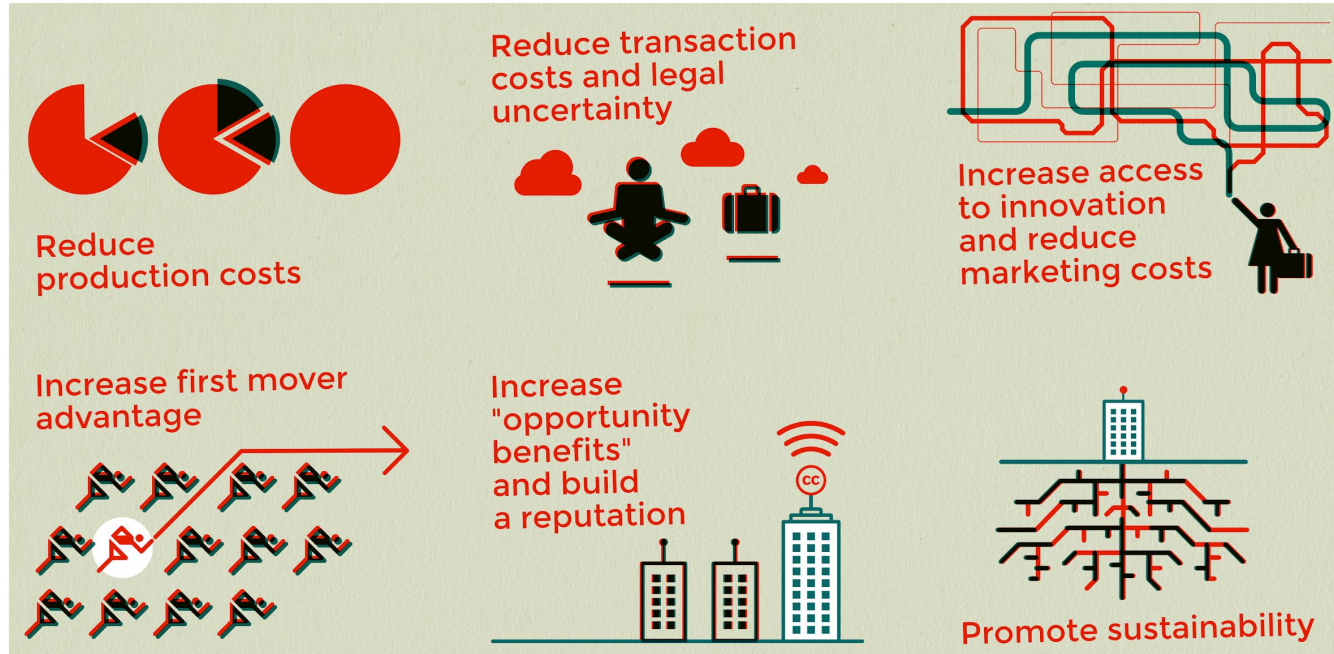


Sustainability for RI Metadata: What's Next?

- FAIRness
 - PIDs and a more permissive license
- Governance
 - MERIL as the central registration authority
- Engagement
 - Include private/for-profit RIs?
 - CC Open Business Model



Sustainability: CC Open Business Model





**Findable?
Accessible?
Interoperable?
Reusable?
Compatible?
Complete?
Credible?
Curated?**

Yeah, duh.



THUNKEN

