

An annotated checklist of the leaf beetles (Coleoptera, Chrysomelidae) from El Salvador, with additions from the Bechné collection in the Royal Belgian Institute of Natural Sciences

Martijn Van Roie^{1,2}, Frederik De Wint¹, Ayse Güngör¹, Charlotte Huyghe¹,
Wouter Dekoninck³, Lukáš Sekerka⁴

1 Biodiversity Inventory for Conservation (BINCO) vzw, Walmersumstraat 44, 3380 Glabbeek, Belgium
2 Department of Biology, Ecosystem Management Research Group, University of Antwerp, Universiteitsplein 1, 2610 Wilrijk, Belgium
3 Royal Belgian Institute for Natural Sciences, Vautierstraat 29, 1000 Brussels, Belgium
4 Department of Entomology, National Museum, Cirkusová 1740, CZ-193 00, Praha 9 – Horní Počernice, Czech Republic

Corresponding author: *Martijn Van Roie* (martijnvanroie@hotmail.com)

Academic editor: *C.S. Chaboo* | Received 29 November 2018 | Accepted 22 February 2019 | Published 17 June 2019

<http://zoobank.org/43D66957-539E-4DC7-AB82-DA175560D5AC>

Citation: Van Roie M, De Wint F, Güngör A, Huyghe C, Dekoninck W, Sekerka L (2019) An annotated checklist of the leaf beetles (Coleoptera, Chrysomelidae) from El Salvador, with additions from the Bechné collection in the Royal Belgian Institute of Natural Sciences. In: Schmitt M, Chaboo CS, Biondi M (Eds) *Research on Chrysomelidae* 8. ZooKeys 856: 137–196. <https://doi.org/10.3897/zookeys.856.32017>

Abstract

A checklist of the species of leaf beetles (Coleoptera: Chrysomelidae) of El Salvador is presented based on data from literature and a digitization project of the Bechné collection of the Royal Belgian Institute of Natural Sciences (RBINS). The RBINS collections contain a total of 2797 individual chrysomelid specimens from El Salvador, sorted into 89 species and 132 genera. In total, the current checklist contains 420 species, of which 33 are new records for El Salvador from the Bechné collection. In these collections, there are also ten nomina nuda named by Bechné, which need further study. The leaf beetle diversity in El Salvador, partly due to the country's unstable political history, remains poorly studied, and many (new) species await discovery. This checklist provides a baseline for further study in El Salvador and nearby region.

Keywords

Digitization, Central America, Neotropics, Museum

Introduction

The description and inventory of biodiversity is facing hard times due to budgetary problems and the decline of taxonomists (Drew 2011). This is also certainly the case for leaf beetles (Coleoptera: Chrysomelidae). Nonetheless, leaf beetles can be of economic significance (Livia 2006), often possess interesting life histories (e.g., the semi-aquatic lifestyle of most Donaciinae, Kleinschmidt and Kölsch (2011)), and can display complex behavior like eusociality (Windsor et al. 2013). Leaf beetles are a taxonomically complex group and, although some regions where the diversity of this group is relatively well known (like the Palearctic and Nearctic regions), other areas like the Neotropics are in desperate need of more study.

One of the most important early studies on Neotropical Chrysomelidae was done for the multipartite series of the *Biologia Centrali Americana* (Baly and Champion 1885–1894; Jacoby 1880–1892; 1888–1892). The series remains the most complete source of information today on insect fauna of Central America. This work collated information from previous taxonomists, e.g., Crotch, Illiger, Harold and Baly, who published many monographs and species descriptions within Alticini, Eumolpinae, Cryptocephalinae and other subfamilies. In approximately the same period (1850–1862), Boheman had published his ‘*Monographia Cassidarum*’ dealing with the subfamily Cassidinae (Boheman 1850–1862). These early works were followed by the ‘*Coleopterorum Catalogus*’, published in multiple volumes, which represented the first actual checklist (Clavareau 1913a, 1913b, 1914; Heikertinger and Csiki 1939, 1940; Pic 1913; Spaeth 1914; Weise 1911, 1916, 1924). Further checklists include Blackwelder (1946), but, as stated by Furth and Savini (1996), this list contained mainly information derived from the ‘*Coleopterorum Catalogus*’. After the 1940’s, the works on Neotropical Chrysomelidae done by Jan Bechyné and his wife Bohumila Bechyné produced an impressive list of 188 publications about the Chrysomelidae from the Neotropical, Afrotropical and Palearctic regions, with a main focus on the subfamilies Eumolpinae and Galerucinae including Alticini (Seeno et al. 1976). Jan and Bohumila Bechyné described many species, and therefore significantly contributed to the knowledge of Neotropical Chrysomelidae. Another significant work is Scherer (1962) with an identification key to the genera of Neotropical Alticini (Scherer 1962). One of the most prolific taxonomists working on Neotropical leaf-beetles was Francisco Monrós (1922–1958). The Bechnynés’ works focused mainly on describing new taxa, and less on revising previous works and often ignored biological aspects of the taxa. Francisco Monrós focused his studies on detailed complex revisions of particular groups and include numerous ecological observations on host plants and behavior of the species. He published mainly on Criocerinae, Clytrini, Fulcidacini, and Lamprosomatinae. He was in the process of writing his opus magnum ‘*Los géneros de Chrysomelidae*’, but unfortunately due to his premature death only the first volume was published covering Sagrinae, Donaciinae, and Criocerinae (Monrós 1960).

Records from El Salvador are relatively rare (e.g., see Rodrigues and Mermudes 2016)). The country is undersampled for insects and this can be demonstrated by the fact that only two chrysomelid beetles are recorded from El Salvador in the 'Biologia Centrali Americana' series. The most intensive effort to construct a national list for the family dates back to 1960 with three main works by the Bechynés (Bechyné 1954; Bechyné and Bechyné 1960; 1963). Another list of Chrysomelidae from El Salvador is found in the two-part series 'Lista de Insectos Clasificados de El Salvador' (Berry and Salazar 1957, Berry 1959). However, these are inadequate because most Chrysomelidae species identifications include the statements "probably" and "proximately", lacking information on who identified the species and depository of the specimens. Moreover, there are many misspellings and misinterpretations in species and author names and some species listed in Berry and Salazar (1957) are not included in Berry (1959) without any explanation. The occurrence data of these listed species should be verified by examination of material. Part of the material collected by Berry is deposited in the National Museum of Natural History (UNSM), Washington DC, USA. The Berry lists were unknown to most of subsequent authors, who explicitly recorded species mentioned in the lists as new to El Salvador. This is particularly obvious in Cassidinae, which represent one of the best known chrysomelid subfamilies of the world.

Much of the Bechyné material from El Salvador was unfortunately lost during their trip from Europe to Brazil (Furth 2018, in litteris), but a total of 32 boxes remains in the Royal Belgian Institute of Natural Sciences (RBINS), and they contain hundreds of specimens of the Bechyné collection. These include numerous paratypes of the subfamily Eumolpinae and tribe Alticini.

We carried out a literature search, seeking any records of leaf beetles for El Salvador, with the main goal of constructing an updated and annotated checklist. Additionally, we added species data from the Bechyné El Salvador collection from the RBINS. The results of this work are presented here.

Materials and methods

Literature search

During our literature study, we accessed multiple historical references from eminent contributors to chrysomelid taxonomy, such as Bechyné, Stål, Jacoby, Baly, Blake, Harold, Illiger, and others as mentioned in the introduction. We also scouted some existing checklists from neighboring countries for references of El Salvadorean Chrysomelidae (e.g., Furth (2006), Furth (2013), Maes and Staines (1991)) as well as subfamily checklists for Central America level (e.g., Furth and Savini (1996)). A complete list of references containing records for El Salvador are indicated in our Results section. Species in Berry and Salazar (1957) and Berry (1959) which used the statements "probably" and "proximately" were not added in the present checklist to avoid incorrectly identified species.

Specimen digitization

Eighteen full and 14 partially-filled insect drawers with material from El Salvador were digitized by volunteers (following the protocol described in Merckx et al. (2018)). For this, at least one specimen per species was photographed in dorsal, lateral and frontal views, using an Olympus TG4 digital camera with focus stacking functionality (see Mertens et al. (2017), where this method is discussed thoroughly). Pictures of these specimens were stacked using the Helicon Focus software (HeliconSoft Ltd, Kharkiv, Ukraine). A total of 42 specimens from El Salvador belonging to the genus *Calligrapha* Chevrolat that had already been digitized in a previous project were added to the database (Merckx et al. 2018). Furthermore, a high-resolution picture was taken of every insect drawer; such that all specimens have a clear dorsal picture, making intraspecific variation clear. The original labels of all specimens in the Bechyné El Salvador collection were also digitized, however for this manuscript the months of dates were changed to roman numerals to avoid confusion. The pictures and accompanying data are publicly available on-line at the RBINS online database (<http://collections.naturalsciences.be/ssh-entomology>).

Taxonomy

We followed the system of Bouchard et al. (2011) for division of subfamilies and tribes. Names found in literature were screened for any nomenclatural changes in their relevant literature and/or were checked by experts on the respective groups (see acknowledgements). If a species record in literature had an outdated nomenclature, the name under which it was recorded is given under remarks at the relevant species checklist.

Used abbreviations

We used the following abbreviations for institutes:

- RBINS** Royal Belgian Institute of Natural Sciences;
- BMNH** British Museum of Natural History;
- DBET** collection of Lech Borowiec, Wrocław, Poland;
- LSC** collection of Lukáš Sekerka, Prague, Czech Republic;
- USNM** National Museum of Natural History, Smithsonian Institution, Washington DC, USA.

Results

A total of 2.797 individual chrysomelid specimens from El Salvador, sorted into 89 species and 132 genera in the RBINS collections were digitized. A full list of the speci-

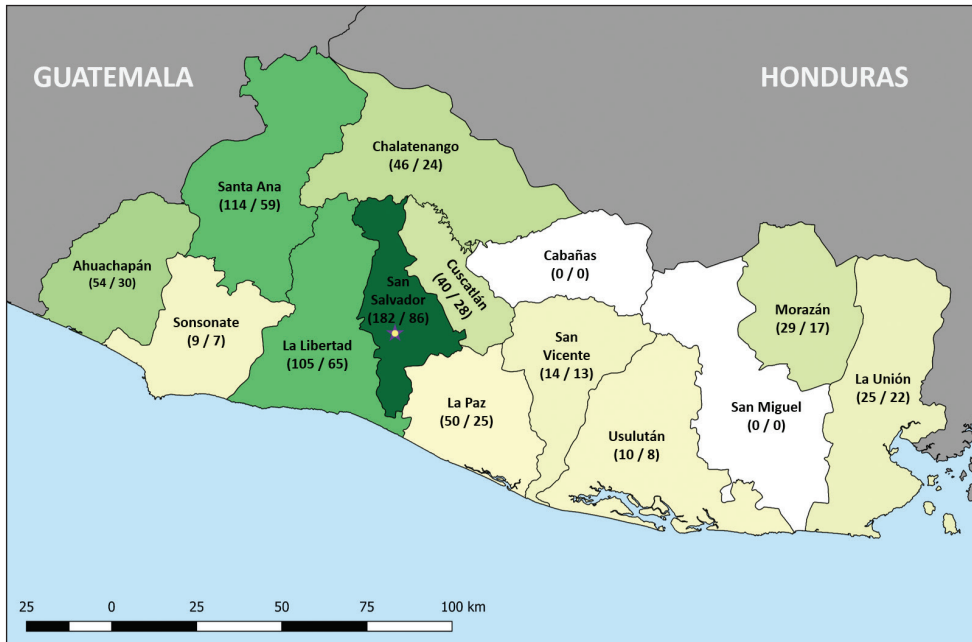


Figure 1. Heatmap of the species recorded per department of El Salvador. The darker the colour, the more species have been recorded. Numbers between brackets indicate number of species (first number) and number of genera (second number): (Species / Genera).

mens included in the RBINS can be found below. Included in the collection were ten *nomina nuda*, namely: *Antitypona* sp. (Manuscript species – Eumolpinae), *Brachypnoea* sp. 1 (Manuscript species – Eumolpinae), *Brachypnoea* sp. 2 (Manuscript species – Eumolpinae), *Hylax* sp. (Manuscript species – Eumolpinae), *Percolaspis* sp. 1 (Manuscript species – Eumolpinae), *Percolaspis* sp. 2 (Manuscript species – Eumolpinae), *Phanaeta* sp. (Manuscript species – Eumolpinae), *Chaetocnema* sp. (Manuscript species – Galerucinae, Alticini), *Phyllotreta* sp. (Manuscript species – Galerucinae, Alticini) and *Walterianella* sp. (Manuscript species – Galerucinae, Alticini). We chose to not give the names and photographs of these undescribed species here to avoid the cluttering of invalid names in the literature.

We noted a severe undersampling of Cryptocephalinae and Criocerinae. For example, Vencl et al. (2004) (Criocerinae) indicated the range of a species distribution (e.g., Mexico to Panama), but lacked specific records from El Salvador of which the authors are aware. Such unspecific records were left out of the present checklist. In total, the literature search led to a total of 385 chrysomelid species known to occur in El Salvador. Together with the Bechyné collection, this led to a combined total of 420 species (Figure 1 and Suppl. material 1: Table S1).

Suppl. material 1: Table S1 displays the number of species and genera per sub-family for each district. The departments with the highest species count to date are San Salvador (182 species), La Libertad (105 species), Santa Ana (114 species),

Ahuachapán (54 species), La Paz (50 species) and Chalatenango (46 species). No records from both San Miguel and Cabañas could be found, nor were there any specimens from these departments included in the RBINS collections. Below is the checklist of species from El Salvador taken from literature (the reference indicated between brackets after every record) and from the Bechyné collection in the RBINS. Additionally, some extra records of Cassidinae were added from other sources known to one of the authors. If the authors were aware of any nomenclatural changes, this is indicated under “remarks”.

Checklist of chrysomelid species from EL Salvador

Subfamily Bruchinae

1. *Acanthoscelides argillaceus* (Sharp, 1885)

Remarks. Berry (1959) mentions *Acanthoscelides armitagei* Pic, 1931 as being present in El Salvador, but does not give specific records. This taxon was synonymized with *A. argillaceus* (Sharp, 1885) by Kingsolver (1969). Johnson (1990) also mentioned occurrence in El Salvador without precise data.

2. *Acanthoscelides brevipes* (Sharp, 1885)

Remarks. Johnson (1990) mentions this species as being present in El Salvador, but does not give specific records.

3. *Acanthoscelides clitellarius* (Fahraeus, 1839)

Remarks. Johnson (1990) mentions this species as being present in El Salvador, but does not give specific records.

4. *Acanthoscelides desmoditus* Johnson, 1983

Remarks. Johnson (1990) mentions this species as being present in El Salvador, but does not give specific records.

5. *Acanthoscelides difficilis* (Sharp, 1885)

Remarks. Johnson (1990) mentions this species as being present in El Salvador, but does not give specific records.

6. *Acanthoscelides griseolus* (Fall, 1910)

Remarks. Johnson (1990) mentions this species as being present in El Salvador, but does not give specific records.

7. *Acanthoscelides guazumae* Johnson & Kingsolver, 1971

Remarks. Johnson (1990) mentions this species as being present in El Salvador, but does not give specific records.

8. *Acanthoscelides guerrero* Johnson, 1983

Remarks. Johnson (1990) mentions this species as being present in El Salvador, but does not give specific records.

9. *Acanthoscelides hectori* Kingsolver, 1980

Remarks. One specimen from El Salvador was intercepted at USDA Plant Quarantine, Washington DC (Kingsolver 1980).

10. *Acanthoscelides macrophthalmus* (Schaeffer, 1907)
Published records. LA LIBERTAD: San Andrés, 6/VI/1958 (Johnson 1979).
11. *Acanthoscelides mankinsi* Johnson, 1983
Remarks. Johnson (1990) mentions this species as being present in El Salvador, but does not give specific records.
12. *Acanthoscelides megacornis* Kingsolver, 1980
Published records. SANTA ANA: P. N. Montecristo, 7–9/V/1958 (Kingsolver 1980).
13. *Acanthoscelides obvelatus* Bridwell, 1942
Remarks. Berry (1959) mentions this species as being present in El Salvador, but does not give specific records.
14. *Acanthoscelides puelliopsis* Johnson, 1983
Remarks. Johnson (1990) mentions this species as being present in El Salvador, but does not give specific records.
15. *Acanthoscelides puellus* (Sharp, 1885)
Remarks. Mancía and Cortéz (1975) and Johnson (1990) mention this species as being present in El Salvador, but do not give specific records.
16. *Acanthoscelides pusillimus* (Sharp, 1885)
Remarks. Johnson (1990) mentions this species as being present in El Salvador, but does not give specific records.
17. *Acanthoscelides quadridentatus* (Schaeffer, 1907)
Remarks. Johnson (1990) mentions this species as being present in El Salvador, but does not give specific records.
18. *Acanthoscelides rufovittatus* (Schaeffer, 1907)
Remarks. Johnson (1990) mentions this species as being present in El Salvador, but does not give specific records.
19. *Acanthoscelides taboga* Johnson, 1983
Remarks. Johnson (1990) mentions this species as being present in El Salvador, but does not give specific records.
20. *Amblycerus mariae* Romero, Johnson & Kingsolver, 1996
Published records. LA LIBERTAD: La Toma, 11/VI/1958 (Romero et al. 1996); SAN VICENTE: Santa Cruz Porrillo, 5/VI/1958.
21. *Amblycerus multiflocculus* Kingsolver, 1980
Published records. SAN SALVADOR: Tonocatepeque, 20/VI/1958 (Kingsolver 1980).
22. *Amblycerus scutellaris* (Sharp, 1885)
Remarks. Romero et al. (1996) mentions this species as being present in El Salvador, but does not give specific records.
23. *Amblycerus spondiae* Kingsolver, 1980
Published records. LA LIBERTAD: Santa Tecla, 5/VI/1958; LA UNIÓN: Volcan Conchagua, 27–29/V/1958 (Kingsolver 1980); SAN SALVADOR: 9/VI/1958.
24. *Amblycerus vegai* Kingsolver, 1996
Published records. LA UNIÓN: Volcan Conchagua, 27–29/V/1958 (Kingsolver 1980).

25. *Callosobruchus maculatus* (Fabricius, 1775)

Remarks. Mancía and Cortéz (1975) mention this species as being present in El Salvador, but do not give specific records. This species is native to the Oriental Region.

26. *Callosobruchus chinensis* (Linnaeus, 1758)

Remarks. Mancía and Cortéz (1975) mention this species as being present in El Salvador, but do not give specific records. This species is native to the Oriental Region.

27. *Caryedes brasiliensis* (Thunberg, 1816)

Published records. SAN SALVADOR: Tonacatepeque, VI/1931 (Kingsolver and Whitehead 1974a).

28. *Caryedes clitoriae* (Gyllenhal, 1839)

Published records. CHALATENANGO: Quetzaltepeque, 19/VI/1963 (Kingsolver and Whitehead 1974a, published under name *C. confinis* (Sharp, 1885)).

29. *Caryedes longicollis* (Fahraeus, 1839)

Published records. SANTA ANA: P. N. Montecristo, 23 km N of Metapan, 8–10/V/1971 (Kingsolver and Whitehead 1974a).

30. *Caryedes quadridens* (Jekel, 1855)

Published records. LA UNIÓN: Volcan Conchagua, 27–29/V/1958 (Kingsolver and Whitehead 1974a).

31. *Caryobruchus curvipes* (Latreille, 1811)

Published records. LA LIBERTAD: Santa Tecla (Berry and Salazar 1957). SAN SALVADOR (Bridwell 1929).

32. *Ctenocolum crotonae* (Fahraeus, 1839)

Published records. LA UNIÓN: Volcan Conchagua, 27–29/V/1958; SAN SALVADOR: 20/XII/1921–4/1/1922 (Kingsolver and Whitehead 1974b).

33. *Gibbobruchus cristicollis* (Sharp, 1885)

Published records. LA UNIÓN: Volcan Conchagua, 27–29/V/1958 (Kingsolver and Whitehead 1975b).

34. *Gibbobruchus guanacaste* Kingsolver & Whitehead, 1975

Published records. LA UNIÓN: Volcan Conchagua, 27–29/V/1958 (Kingsolver and Whitehead 1975b).

35. *Megacerus (Pachybruchus) bifloccosus* (Motschulsky, 1874)

Published records. LA UNIÓN: Volcan Conchagua, 27–29/V/1958 (Teran and Kingsolver 1977).

36. *Megacerus (Serratibruchus) cubiciformis* (Sharp, 1885)

Published records. LA UNIÓN: Volcan Conchagua, 27–29/V/1958 (Teran and Kingsolver 1977).

37. *Megasennius muricatus* (Sharp, 1885)

Published records. LA LIBERTAD: Quetzaltepeque, 19/VI/1958; SAN SALVADOR: 5/VI/1958 (Whitehead and Kingsolver 1975a).

38. *Meibomeus apicicornis* (Pic, 1933)

Published records. LA LIBERTAD: San Andrés (Kingsolver et al. 1976). LA UNIÓN: Volcan Conchagua (Kingsolver et al. 1976). SAN SALVADOR: San Salvador, Tonacatepeque (Kingsolver et al. 1976).

- 39. *Meibomeus campbelli* Kingsolver & Whitehead, 1976**
Published records. LA LIBERTAD: Quezaltepeque (Kingsolver and Whitehead 1976).
- 40. *Meibomeus howdeni* Kingslover & Whitehead, 1976**
Published records. SAN SALVADOR: San Salvador, Boquerón, 1800 m, nr. Santa Tecla, 2/V/1971, leg. F. Howden, (Kingsolver et al. 1976).
- 41. *Meibomeus surrubresus* (Pic, 1933)**
Published records. El Salvador, without further data (Mancía and Cortéz 1975). LA LIBERTAD: La Libertad, Quezaltepeque, San Andrés; LA UNIÓN: Volcan Conchagua SAN SALVADOR: San Salvador; USULUTÁN: Santiago de Maria (Kingsolver et al. 1976).
- 42. *Merobruchus columbinus* (Sharp, 1885)**
Published records. LA LIBERTAD, LA PAZ, SAN SALVADOR (Kingsolver 1988).
- 43. *Merobruchus cristoensis* Kingsolver, 1988**
Published records. SANTA ANA: P. N. Montecristo, 23 km N of Metapan, 8–10/V/1971 (Kingsolver 1988).
- 44. *Merobruchus knulli* (White, 1941)**
Published records. SAN VICENTE (Kingsolver 1988).
- 45. *Mimosestes humeralis* (Gyllenhal, 1833)**
Published records. SANTA ANA: 8/I/1922 (Kingsolver and Johnson 1978).
- 46. *Mimosestes mimosae* (Fabricius, 1781)**
Published records. SAN SALVADOR: San Salvador, 24/V/1958 and 14/VI/1958 (Kingsolver and Johnson 1978).
- 47. *Mimosestes nubigens* (Motschulsky, 1874)**
Published records. CUSCATLÁN: 6 mi S of Candelaria, 20/VI/1968; El Carmen, 27/V/1958; LA UNIÓN: 14 mi SW of La Union, 23/VI/1968 (Kingsolver and Johnson 1978).
- 48. *Pygiopachymerus lineola* (Chevrolat, 1871)**
Published records. LA UNIÓN: La Unión, (Berry and Salazar 1957). SAN SALVADOR: 1920 (Kingsolver, 1970).
Remarks. Berry and Salazar (1957) reported this species under the name *Phelomerus aberrans* (Shary).
- 49. *Sennioides abbreviatus* (Say, 1824)**
Published records. Mancía and Cortéz (1975) mention this species (under the name *S. bivulneratus* (Horn, 1873)) as being present in El Salvador, but do not give specific records.
- 50. *Sennioides atripectus* Johnson & Kingsolver, 1973**
Published records. SANTA ANA: Metapán, P. N. Montecristo, 7–9/V/1958, leg. O.L. Cartwright, (Johnson and Kingsolver 1973).
- 51. *Sennioides discolor* (Horn, 1873)**
Published records. Mancía and Cortéz (1975) mention this species as being present in El Salvador, but do not give specific records.
- 52. *Sennioides fallax* (Boheman, 1839)**
Published records. LA LIBERTAD: Santa Tecla (Berry and Salazar 1957).

Remarks. In Berry and Salazar (1957) this species is given under the name *S. probus* which was synonymized with *S. fallax* in (Johnson and Kingsolver 1973). This species record of Berry was not included in the publication of Johnson and Kingslover (1973).

53. *Senniüs lebasi* (Fahraeus, 1839)

Remarks. Johnson and Kingsolver (1973) mention this species (under the name *S. celatus* (Sharp, 1885)) as being present in El Salvador, but do not give specific records.

54. *Senniüs morosus* (Sharp, 1885)

Published records. Johnson and Kingsolver (1973) and Mancía and Cortéz (1975) mention this species as being present in El Salvador, but does not give specific records.

55. *Senniüs obesulus* (Sharp, 1885)

Published records. LA UNIÓN: without further locality data (Johnson and Kingsolver 1973).

56. *Senniüs rufomaculatus* (Motschulsky, 1874)

Published records. Johnson and Kingsolver (1973) mention this species as being present in El Salvador, but do not give specific records.

57. *Stator limbatus* (Horn, 1873)

Published records. LA LIBERTAD: San Andrés, V/1958 (Johnson and Kingsolver 1976). LA UNIÓN: 14 mi SW La Unión, 23/VI/1968, Leg. C. D. Johnson (Johnson 1976).

58. *Stator pruininus* (Horn, 1873)

Remarks. Johnson (1976) and Johnson and Kingsolver (1976) mention this species as being present in El Salvador, but do not give specific records.

59. *Stator sordidus* (Horn, 1873)

Remarks. Johnson (1976) and Johnson and Kingsolver (1976) mention this species as being present in El Salvador, but does not give specific records.

60. *Stator vachelliae* Bottimer, 1973

Remarks. Johnson and Kingsolver (1976) mention this species as being present in El Salvador, but do not give specific records.

61. *Zabrotes chavesi* Kingsolver, 1980

Published records. SAN SALVADOR: San Salvador, 14/VI/1958 (Kingsolver 1980).

62. *Zabrotes interstitialis* (Chevrolat, 1871)

Published records. SAN SALVADOR: San Salvador, 22–26/VI/1958 (Kingsolver 1970b).

63. *Zabrotes subfasciatus* (Boheman, 1833)

Published records. SAN SALVADOR: San Salvador (Berry 1957).

Remarks. Kingsolver (1990) mentioned cosmopolitan distribution for this species but did not name individual countries, where the species was confirmed.

Subfamily Cassidinae

1. *Anisostena funesta* (Baly, 1885)

Published records. SAN SALVADOR: San Salvador, 14/VI/1948, 9/VI/1958, 21/VI/1958, 25/VI/1958; SANTA ANA: Valiano (Staines 1994b).

Specimens examined. LA LIBERTAD: Santa Tecla, 28/IV/1960, 1 spec., J. Bechyné leg. (RBINS). MORAZÁN: Perguin, 22/VI/1959, 1 spec., J. Bechyné leg. (LSC).

2. *Anisostena perspicua* (Horn, 1883)

Published records. LA LIBERTAD: Quezaltepeque, 500 m a.s.l., 19/VI/1963, 7–8/VII/1963, 15/VII/1963, 4/VIII/1963 (Staines 1994b).

3. *Anisostena pilatei* (Baly, 1864)

Published records. LA LIBERTAD: Quezaltepeque, 500 m a.s.l., 19/VI/1963, 5/VII/1963, 15/VII/1963; Santa Tecla, 4/VI/1959 (Staines 1994a).

4. *Anisostena trilineata* (Baly, 1864)

Published records. SAN SALVADOR: San Salvador, 5/VI/1958, 21/VI/1958, 25/VI/1958 (Staines 1994a).

Specimens examined. SANTA ANA: Volcan San Diego, 22–24/VI/1959, 1 spec., J. Bechyné leg. (RBINS).

5. *Baliosus fraternus* (Baly, 1885) new record

Specimens examined. CUSCATLÁN: Hacienda Colima, 12/VII/1959, 9 spec., 22/VII/1959, 47 spec., J. Bechyné leg. (RBINS, 10 LSC); LA LIBERTAD: San Andrés, 15/VI/1959, 1 spec., J. Bechyné leg. (RBINS); SANTA ANA: Volcan San Diego, 22–24/VI/1959, 1 spec., J. Bechyné leg. (RBINS).

6. *Baliosus marmoratus* (Baly, 1885)

Published records. SAN VICENTE: Ichamichen, 150 m a.s.l., 5/IX/1958, 1 spec. (Uhmann 1961).

Specimens examined. LA UNIÓN: Cutuco, 2–3/VI/1959, 1 spec., J. Bechyné leg. (RBINS).

7. *Brachycoryna pumila* Guérin-Ménéville, 1844

Published records. SAN SALVADOR: Toma de Aguilares (Berry and Salazar 1957).

Specimens examined. SAN SALVADOR: San Salvador, 14–30/VI/1959, 1 spec., J. Bechyné leg. (RBINS).

8. *Cephaloleia ruficollis* Baly, 1859

Published records. CUSCATLÁN: El Rosario (Berry and Salazar 1957). LA LIBERTAD: Los Chorros, 4 km S of Santa Tecla, 13/V/1971 (Staines 1996).

9. *Cephaloleia tenella* Baly, 1885

Published records. SAN SALVADOR: San Salvador, 14/VI/1958, 21/VI/1958, 1 spec. (Staines 1996).

10. *Chalepus acuticornis* (Chapuis, 1877)

Remarks. Berry (1959) mentions this species as being present in El Salvador, but does not give specific records. Species of *Chalepus* are rather difficult for identification and thus presence of this species El Salvador must be verified.

11. *Chalepus amabilis* Baly, 1885

Published records. CUSCATLÁN: El Rosario (Berry and Salazar 1957). LA LIBERTAD: Los Chorros, 500 m a.s.l., 12/X/1958, 3 spec. (Uhmann 1961).

12. *Chalepus bellulus* (Chapuis, 1877)

Published records. SAN VICENTE: Santa Cruz Porrillo (Berry and Salazar 1957). SONSONATE: Icalo [sic.!: = Izalco], 400 m a.s.l., 28/IX/1958, 1 spec. (Uhmann 1961).

Specimens examined. SANTA ANA: Volcan San Diego, 22–24/VI/1959, 2 spec., 25/VI/1959, 1 spec., J. Bechyné leg. (RBINS, 1 LSC).

13. *Chalepus pici* Descarpentries & Villiers, 1959

Specimens examined. LA LIBERTAD: Santa Tecla (Berry and Salazar 1957); LA PAZ: Volcan San Vicente, Finca La Paz, 1/VIII/1959, 1 spec., 5–6/VIII/1959, 1 spec., J. Bechyné leg. (RBINS, LSC).

Remarks. Berry and Salazar (1957) published this species as *Chalepus* cf. *quadricostatus reductus* Pic. The name is a homonym and was replaced by *C. pici*. Occurrence of this species in El Salvador confirmed.

14. *Chalepus similatus* Baly, 1885 new record (Fig. 2A)

Specimens examined. AHUACHAPÁN: Apaneca, 14–15/VII/1959, 5 spec., J. Bechyné leg. (RBINS, 2 LSC); LA UNIÓN: Cutuco, 2–3/VI/1959, 12 spec., J. Bechyné leg. (RBINS, 4 LSC); SANTA ANA: Volcan San Diego, 22–24/VI/1959, 3 spec., J. Bechyné leg. (RBINS, 1 LSC).

15. *Chalepus verticalis* (Chapuis, 1877) new record

Specimens examined. SAN SALVADOR: El Salvador, 12/VII/1959, 1 spec., J. Bechyné leg. (LSC). LA LIBERTAD: Santa Tecla, 28/IV/1960, 1 spec., J. Bechyné leg. (RBINS).

Remarks. Berry (1959) published a record of *Chalepus* sp. probably *verticalis* without stating precise collecting data.

16. *Charidotella* (s. str.) *bifossulata* (Boheman, 1855)

Remarks. Berry (1959) mentions this species as being present in El Salvador, but does not give specific records. Occurrence of this species in El Salvador is probable.

17. *Charidotella* (s. str.) *egregia* (Boheman, 1855)

Remarks. Berry (1959) mentions this species as being present in El Salvador, but does not give specific records. Occurrence of this species in El Salvador is probable.

18. *Charidotella* (s. str.) *sexpunctata* (Fabricius, 1781)

Published records. LA LIBERTAD: Santa Tecla; Zaragoza, 1 spec.; SAN SALVADOR: Guazapa, 11/V/1960, 2 spec., J. Bechyné leg. (Borowiec 1996). SAN VICENTE: Santa Cruz Porrillo (Berry and Salazar 1957). SANTA ANA: Cerro Verde, 14/V/1976, 1 spec., A. Muyschondt leg.; Montecristo, Metapán, 23/V/1976, 1 spec., A. Muyschondt leg. (Borowiec 2009).

Specimens examined. UNKNOWN PROVINCE: Cafetalera, 14/VIII/1956, 4 spec. (SMTD).

Remarks. Berry and Salazar (1957) and Berry (1959) published this species under the name *Metriona trisignata* (Boheman, 1855), which is considered a synonym of *C. sexpunctata*.

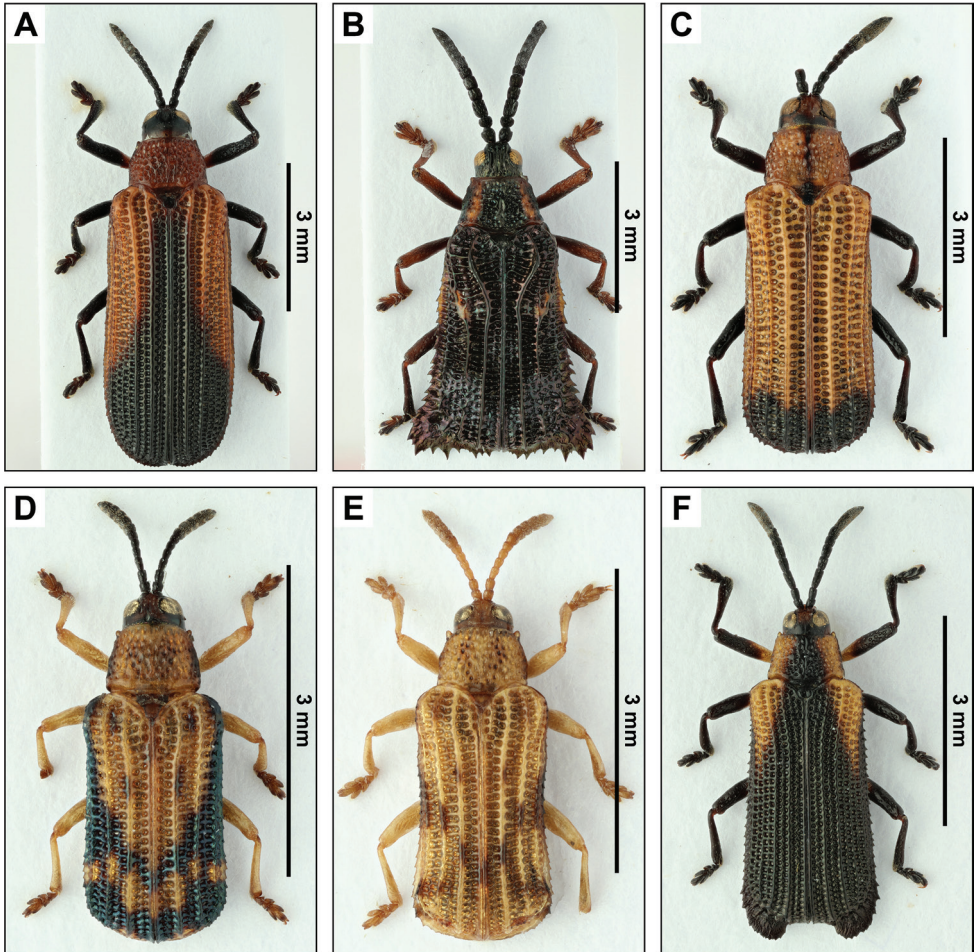


Figure 2. Dorsal pictures of some of the species of Cassidinae from El Salvador from the collections of the RBINS. **A** *Chalampus simulatus* **B** *Euprionota gebieni* **C** *Octhispa atroterminata* **D** *Sumitrosis distinctus* **E** *Sumitrosis fryi* **F** *Uroplata sculptilis*. High resolution images can be found at <http://collections.naturalsciences.be/ssh-entomology>.

19. *Charidotella* (s. str.) *succinea* (Boheman, 1855)

Published records. El Salvador, without further data (Berry 1959 as *Metriona* cf. *profligata* Boheman, 1862); SANTA ANA: Montecristo, Metapán, 23/V/1976, 1 spec., A. Muysshondt leg. (Borowiec 2009: 638).

20. *Charidotella* (s. str.) *tuberculata* (Fabricius, 1775)

Published records. LA LIBERTAD: Los Chorros, Santa Tecla; SAN SALVADOR: Guazapa, 10/IX/1959, 3 spec., J. Bechyné leg. (Borowiec 1996); SONSONATE: Sonsonate (Berry and Salazar 1957).

Remarks. Borowiec (1996) recorded the species as new to El Salvador.

21. ? *Charidotella* (s. str.) *tumida* (Champion, 1894)

Remarks. Berry (1959) mentions this species as being present in El Salvador, but does not give specific records. The species is known so far only from Costa Rica and Panama, and its occurrence in El Salvador is not very probable.

22. *Charidotella* (s. str.) *virgulata* (Boheman, 1855)

Specimens examined. SANTA ANA: Cerro Verde, 1500 m, 7.ix.1958, 1 spec., Steinhausen leg. (DBET); SAN SALVADOR: San Salvador env., 1500 m, 6.ix.1958, 1 spec., Steinhausen leg. (DBET).

Remarks. Borowiec (1989) mentions this species as being present in El Salvador, but does not give specific records. The record was based on the first of the above-mentioned specimens. The second specimen was originally identified as *C. (Xenocassis) irazuensis* (Champion, 1894), however, in fact belongs also to *C. virgulata* (L. Borowiec, pers. comm.). Therefore *C. irazuensis* does not occur in El Salvador.

23. *Charidotella* (*Chaerocassis*) *emarginata* (Boheman, 1855)

Published records. LA LIBERTAD: Santa Tecla (Berry and Salazar 1957).

Remarks. Occurrence of this species in El Salvador is probable.

24. ? *Charidotella* (*Xenocassis*) cf. *ambita* (Champion, 1894).

Remarks. Berry (1959) mentions this species as being present in El Salvador, but does not provide specific records. Certainly species of the subgenus *Xenocassis* Späth, 1936 must occur in El Salvador but so far formally none was recorded. The species are very similar to each other and the identification is not easy without comparative material. *Charidotella* (*X.*) *ambita* is distributed in southern part of Central America (S Nicaragua to Panama), however, its occurrence in El Salvador cannot be excluded but is improbable.

25. *Charidotis vitreata* (Perty, 1830)

Remarks. Berry (1959) mentions this species as being present in El Salvador, but does not give specific records. Occurrence of this species in El Salvador is very probable.

26. *Chelymorpha comata* Boheman, 1854

Published records. El Salvador, without further data (Berry 1959 as *Chelymorpha* cf. *comata*). SAN SALVADOR: Guazapa, 10/IX/1959, 1 spec., J. Bechyně leg. (Borowiec 1996: 158); SANTA ANA: Volcan San Diego, 22.–24/VI/1959, 1 spec., J. Bechyně leg. (Borowiec 2009).

27. *Chelymorpha gressoria* Boheman, 1862

Published records. LA LIBERTAD: Comasagua, 1/VII/1959, 1 spec., J. Bechyně leg. (Borowiec 2009).

28. *Chelymorpha pubescens* Boheman, 1854

Published records. El Salvador, without further data (Berry 1959, as *Clelymorpha* [sic!] cf. *pubescens*). CUSCATLÁN: El Rosario (Berry and Salazar 1957).

Remarks. Occurrence of this species in El Salvador is probable.

29. *Coptocycla* (s. str.) *sordida* Boheman, 1855

Specimens examined. UNKNOWN PROVINCE: Alomeya, 17/VIII/1920, 1 spec. (BMNH).

30. *Coptocycla (Psalidonota) leprosa* Boheman, 1855

Published records. El Salvador, without further data (Berry 1959). LA LIBERTAD: Los Chorros (Berry and Salazar 1957). SAN SALVADOR: Guazapa, 11/V/1960, 1 spec., J. Bechyné leg. (Borowiec 1996).

31. *Deloyala fuliginosa* (Olivier, 1790)

Published records. LA LIBERTAD: Cerro Litoral, 6/VI/1976, 1 spec., A. Muyschondt leg.; Zaragosa, 1 spec. (Borowiec 2009). SAN SALVADOR: Guazapa, 10/IX/1959, 6 spec., J. Bechyné leg. (Borowiec 1996; as *D. guttata* (Olivier, 1790)). SAN VICENTE: Santa Cruz Porrillo (Berry and Salazar 1957).

Remarks. Berry and Salazar (1957), Berry (1959) and Borowiec (1996) published this species under the name *D. guttata* (Olivier, 1790). Although we have not examined the respective specimens, these records must belong to *D. fuliginosa* as *D. guttata* does not occur south of USA.

32. ? *Deloyala lecontei* (Crotch, 1873)

Remarks. Berry (1959) mentions this species as being present in El Salvador, but does not give specific records. Occurrence of this species in El Salvador is dubious as it is distributed in southern part of United States and north and central Mexico.

33. *Deloyala zetterstedti* (Boheman, 1855)

Published records. El Salvador, without further data (Berry 1959). LA LIBERTAD: C. Litoral, 6/VI/1976, 1 spec., A. Muyschondt leg. (Borowiec 2009). SAN SALVADOR: Guazapa, 11/V/1960, 1 spec., J. Bechyné leg. (Borowiec 1996).

Remarks. Berry (1959) mentioned both colour forms, with and without posterolateral spots on explanate margin of elytra. The other form was named *Coptocycla sallei* Boheman, 1862.

34. *Euprionota atterima* Guérin-Méneville, 1844

Published records. LA LIBERTAD: Los Chorros, 500 m a.s.l., 12/X/1958, 1 spec. (Uhmman 1961).

35. *Euprionota gebieni* (Uhmman, 1930) (Fig. 2B)

Published records. SAN SALVADOR: San Salvador, 700 m a.s.l., 30/V/1956, 1 spec., E. Möhn leg. (Uhmman 1960).

Specimens examined. CHALATENANGO: La Paluma, 7–9/VII/1959, 1 spec., J. Bechyné leg. (RBINS); LA LIBERTAD: Hacienda Argentina, 4/IV/1960, 1 spec., J. Bechyné leg. (RBINS); Tamanique, 4/V/1960, 1 spec., J. Bechyné leg. (RBINS).

36. *Heterispa vinula* (Erichson, 1847) new record

Published records. El Salvador, without further data (Berry 1959) under the name *Uroplata* cf. *westwoodi* Baly, 1885.

Specimens examined. LA LIBERTAD: Los Chorros, 29/VI/1959, 2 spec., J. Bechyné leg. (RBINS, LSC). LA PAZ: Volcan San Vicente, Finca La Paz, 1/VIII/1959, 2 spec., J. Bechyné leg. (RBINS). USULUTÁN: Jucuaran, 10–11/XI/1959, 1 spec., J. Bechyné leg. (RBINS),

37. ? *Helocassis* cf. *clavata* (Fabricius, 1798)

Published records. SAN SALVADOR: San Salvador (Berry and Salazar 1957).

Remarks. Record by Berry and Salazar (1957) probably belongs to *H. testudinaria* as typical *H. clavata* does not occur in tropical America. Moreover, *H. clavata* is not repeated in his second list (Berry 1959).

38. *Helocassis crucipennis* (Boheman, 1855)

Published records. SONSONATE: San Julián (Berry and Salazar 1957).

Remarks. Occurrence of this species in El Salvador is very probable.

39. *Helocassis testudinaria* (Boheman, 1855)

Published records. El Salvador, without further data (Berry 1959). LA LIBERTAD: Los Chorros, 9/VI/1974, 1 spec., A. Muysshondt leg.; Zaragoza, 2 spec., A. Muysshondt leg. (Borowiec 2009).

40. *Ischnocodia annulus* (Fabricius, 1781)

Published records. El Salvador, without further data (Berry 1959). AHUACHAPÁN: Los Imposibles, 28/III/1976, 1 spec., A. Muysshondt leg. (Borowiec 2009).

41. *Metrionella bilimeki* Spaeth, 1932

Published records. SAN SALVADOR: Guazapa, 10/IX/1959, 1 spec., J. Bechyné leg. (Borowiec 1996).

42. *Metrionella erratica* (Boheman, 1855)

Published records. SAN SALVADOR: Guazapa, 10/IX/1959, 1 spec., J. Bechyné leg. (Borowiec 1996).

43. *Microctenochira ferranti* (Spaeth, 1926)

Published records. El Salvador, without further data (Berry 1959). SAN SALVADOR: Guazapa, 11/V/1960, 5 spec., J. Bechyné leg. (Borowiec 1996).

44. *Microctenochira hectica* (Boheman, 1855)

Published records. El Salvador, without further data (Berry 1959). CUSCATLÁN: El Rosario (Berry and Salazar 1957). SAN SALVADOR: Guazapa, 11/V/1960, 1 spec., J. Bechyné leg. (Borowiec 1996).

45. *Microctenochira* cf. *plebeja* (Boheman, 1855)

Remarks. Berry (1959) mentions this species as being present in El Salvador, but does not give specific records. Its occurrence in El Salvador is very probable.

46. *Microrhopala perforata* Baly, 1864

Published records. CUSCATLÁN: El Rosario (Berry and Salazar 1957). LA LIBERTAD: Los Chorros, 500 m a.s.l., 12/X/1958, 1 spec. (Uhmann 1961); Santa Tecla (Berry and Salazar 1957). SAN VICENTE: Ichamichen, 150 m a.s.l., 5/IX/1958, 1 spec.

Specimens examined. CUSCATLÁN: Hacienda Colima, 12/VII/1959, 1 spec., J. Bechyné leg. (LSC); LA LIBERTAD: El Boquerón, 26/V/1960, 1 spec., J. Bechyné leg. (RBINS). SANTA ANA: Volcan San Diego, 15/VI/1959, 1 spec., 22–24/VI/1959, 1 spec., J. Bechyné leg. (RBINS).

47. *Microrhopala pulchella* Baly, 1864

Published records. El Salvador, without further data (Berry 1959). SAN SALVADOR: San Salvador env., 17/VIII/1958, 1 spec. (Uhmann 1961).

48. *Octhispa atroterminata* Uhmann, 1943 new record (Fig. 2C)

Specimens examined. LA LIBERTAD: El Boquerón, 10/VI/1959, 1 spec., J. Bechyné leg. (LSC); Tamanique, 4/V/1960, 1 spec., J. Bechyné leg. (RBINS). USU-LUTÁN: Jucuaran, 10.–11/XI/1959, 1 spec., J. Bechyné leg. (RBINS).

Remarks. The three specimens from El Salvador have the black stripe on their pronotum rather thin and only apical 1/5 of elytra black while the holotype of *O. atroterminata* has a thick medial stripe on pronotum and apical 1/3 of elytra black and the dark colouration extending along suture forwards. However, Salvadorian specimens show variability in black colouration: one has the pronotal stripe only slightly indicated; two have the apical black colouration on elytra rather emarginate near suture anteriorly while the third specimen has a clearly projecting black stripe along suture. Therefore, we consider these as intraspecific variability as other characters (e.g. general shape, punctuation of elytra and pronotum) are similar to the holotype.

49. *Octhispa centromaculata* (Chapuis 1877) new record

Specimens examined. LA LIBERTAD: Santa Tecla, 28/IV/1960, 1 spec., J. Bechyné leg. (RBINS).

50. *Octotoma championi* Baly, 1885

Published records. SAN VICENTE: Ichamichen, 150 m a.s.l., 17/V/1958, 17/VIII/1958, 5 spec. (Uhmann 1961).

Specimens examined. LA PAZ: Volcan San Vicente, Finca La Paz, 1/VIII/1959, 2 spec., J. Bechyné leg. (RBINS, LSC).

51. *Octotoma scabripennis* Guérin-Ménéville, 1844

Published records. SAN SALVADOR: San Salvador, 1953, x.1965 (Staines 1989).

Specimens examined. LA PAZ: Volcan San Vicente, Finca La Paz, 1/VIII/1959, 1 spec., J. Bechyné leg. (LSC). SAN SALVADOR: El Salvador, 12/VII/1959, 1 spec., J. Bechyné leg. (RBINS); San Salvador, 14.–30/VI/1959, 2 spec., J. Bechyné leg. (RBINS).

52. *Oxychalepus alienus* (Baly, 1885)

Published records. MORAZÁN: Perguin, 22/VI/1959; SANTA ANA: Metapán, Hacienda Montecristo, 2300 m a.s.l., 12/III/1972 (Staines 2010).

53. *Oxychalepus anchora* (Chapuis, 1877)

Published records. LA LIBERTAD: La Libertad, 10 m a.s.l., 15/XII/1972; SAN SALVADOR: Santa Tecla, 9/IV/1957 (Staines 2010).

54. *Oxychalepus balyanus* (Weise, 1911)

Published records. SAN VICENTE: Ichamichen, 150 m a.s.l., 5/IX/1958, 2 spec. (Uhmann 1961: 20); SONSONATE: Ishuatan, 15/IX/1958 (Staines 2010).

Specimens examined. LA LIBERTAD: Comasagna, 3/VII/1959, 1 spec., J. Bechyné leg. (RBINS).

55. *Parorectis rugosa* (Boheman, 1854)

Published records. LA LIBERTAD: Los Chorros, 9/VI/1974, 1 spec., A. Mui-shondt leg. (Borowiec 2009); SAN SALVADOR: Guazapa, 11/V/1960, 1 spec., J. Bechyné leg. (Borowiec 1996).

56. *Pentispa chevrolati* (Chapuis, 1877) new record

Specimens examined. AHUACHAPÁN: Apaneca, 14–15/VII/1959, 2 spec., J. Bechyné leg. (RBINS, 1 LSC); SANTA ANA: Cerro Verde, 16/V/1960, 7 spec., J. Bechyné leg. (RBINS, 1 LSC).

57. *Pentispa fairmairei* (Chapuis, 1877)

Published records. CUSCATLÁN: El Rosario (Berry and Salazar 1957). SAN SALVADOR: San Salvador env., 17/VIII/1958, 5 spec. (Uhmann 1961).

Specimens examined. CHALATENANGO: La Palma, 7–9/VII/1959, 1 spec., J. Bechyné leg. (RBINS). LA LIBERTAD: Comasagna, 3/VII/1959, 2 spec., J. Bechyné leg. (RBINS); El Boquerón, 10/VI/1959, 1 spec., 25/V/1960, 1 spec., J. Bechyné leg. (LSC); Santa Tecla, 28/IX/1959, 1 spec., J. Bechyné leg. (RBINS); Tamanique, 4/V/1960, 4 spec., J. Bechyné leg. (RBINS, 2 LSC). LA PAZ: Volcan San Vicente, Finca La Paz, 1/VIII/1959, 2 spec., J. Bechyné leg. (RBINS). USULUTÁN: Alegria, 22/II/1960, 1 spec., J. Bechyné leg. (RBINS).

Remarks. Berry and Salazar (1957) published this species as *Uroplata pairmairei* Chap., which is a wrong spelling.

58. *Pentispa melanura* (Chapuis, 1877)

Published records. LA LIBERTAD: Boqueron, 1700 m a.s.l., 11/X/1958, 2 spec. (Uhmann 1961).

59. *Physonota alutacea* Boheman, 1854

Published records. SONSONATE: San Julián, Sonsonate (Berry and Salazar 1957).

Specimens examined. LA LIBERTAD: La Toma, 16/V/1958, 1 spec., O. L. Cartwright leg. (USNM). LA PAZ: Olocuilta, 200 m a.s.l., 19/IX/1958, 1 spec., Steinh. leg. (DBET). LA UNION: La Union, 2/X/1924, 1 spec., K. A. Salman leg. (USNM), 10/V/1954, 10 spec., P. A. Berry leg. (USNM), 15/VI/1954, 1 spec., C. A. leg. (USNM). SAN SALVADOR: Lihuatan, 25/V/1960, 1 spec. (DBET); San Salvador, 1929, 2 spec., S. Calderon leg. (USNM). SAN VICENTE: Cuscutlán Bridge on Lempa River, 10/V/1954, 2 spec., P. A. Berry leg. (USNM). SONSONATE: Izalco, 1/IX/1905, 1 spec., F. Knab leg. (USNM); Sonsonate, 24/VIII/1905, 1 spec., F. Knab leg. (USNM). USULUTÁN: Volcan Conchagua, 27–29/V/1958, 1 spec., O. L. Cartwright leg. (USNM).

60. *Physonota attenuata* Boheman, 1854

Published records. SONSONATE: Sonsonate (Berry and Salazar 1957).

Remarks. Occurrence of this species in El Salvador should be verified as species of *Physonota* Boheman, 1854 are rather difficult for identification.

61. *Physonota citrina* Boheman, 1854

Published records. SANTA ANA: Montecristo, Metapán, 23/V/1976, 3 spec., A. Muysshondt leg. (Borowiec 2009).

62. ? *Physonota* cf. *eucalypta* Boheman, 1862

Remarks. Berry (1959) mentions this species as being present in El Salvador, but does not give specific records. Occurrence of this species in El Salvador is possible. On the other hand identification of species of *Physonota* Boheman, 1854 is rather difficult and the record could belong to another species, e.g. *P. limoniata* Boheman, 1862.

63. *Physonota gigantea* Boheman, 1854

Published records. SONSONATE: Acajutla (Champion 1894), Sonsonate (Berry and Salazar 1957).

Specimens examined. SANTA ANA: Volcan San Diego, 22–24/VI/1959, 1 spec., J. Bechyné leg. (DBET).

64. *Physonota limoniata* Boheman, 1862

Published records. LA LIBERTAD: Jayaque, 1/VI/1975, 1 spec., A. Muysshondt leg. (Borowiec 2009).

65. *Platocthispa fulvescens* (Baly, 1886)

Published records. LA LIBERTAD: Sitio del Niño, 9/V/1956, 1 spec., E. Möhn leg. (Uhmann 1960).

66. ? *Stolas nigrolineata* (Champion, 1893)

Remarks. Berry (1959) mentions this species as being present in El Salvador, but does not give specific records. The species is given under genus, *Championaspis* Spaeth, 1913. The species is so far known only from high mountains in Costa Rica and Panama, therefore its occurrence in El Salvador is very questionable. On the other hand it is very characteristic species, but there is *Hilarocassis exclamationis* (Linnaeus, 1767) occurring in Central America, which has also thin black lines on elytra.

67. *Sumitrosis distinctus* (Baly, 1885) new record (Fig. 2D)

Specimens examined. LA UNIÓN: Cutuco, 2–3/VI/1959, 1 spec., J. Bechyné leg. (LSC). SANTA ANA: Volcan San Diego, 25/VI/1959, 1 spec., J. Bechyné leg. (RBINS).

Remarks. Berry (1959) mentioned *Anoptilis* sp. probabl. *distincta* Baly as being present in El Salvador, but does not give specific records. Occurrence of *S. distinctus* in El Salvador confirmed.

68. *Sumitrosis fryi* (Baly, 1885) new record (Fig. 2E)

Specimens examined. AHUACHAPÁN: Los Ausoles, 26/I/1960, 1 spec., J. Bechyné leg. (RBINS). LA LIBERTAD: El Boquerón, 10/VI/1959, 1 spec., J. Bechyné leg. (LSC).

69. *Uroplata fusca* Chapuis, 1877

Published records. SONSONATE: Izalco, 400 m a.s.l., 28/IX/1958, 1 spec. (Uhmann 1961).

70. *Tapinaspis wesmaeli* (Boheman, 1855)

Published records. El Salvador, without further data (Berry 1959). SANTA ANA: Lago de Coatepeque, 19/VII/????, C. F. & S. Hevel leg. (Chaboo 2002).

71. *Uroplata sculptilis* Chapuis, 1877 new record (Fig. 2F)

Specimens examined. LA PAZ: Volcan San Vicente, Finca La Paz, 1/VIII/1959, 1 spec., J. Bechyné leg. (RBINS). SAN SALVADOR: San Salvador, 14–30/VI/1959, 1 spec., J. Bechyné leg. (RBINS).

72. *Xenochalepus* (*Neochalepus*) *contubernalis* (Baly, 1885)

Published records. SAN SALVADOR: San Salvador env., 17/VIII/1958, 3 spec. (Uhmann 1961).

Specimens examined. LA LIBERTAD: Tamanique, 4/V/1960, 6 spec., J. Bechyné leg. (RBINS, 2 LSC). SAN SALVADOR: San Salvador, 19/VI/1959, 1 spec., J. Bechyné leg. (LSC). SANTA ANA: Cerro Verde, 15/II/1960, 1 spec., J. Bechyné leg. (RBINS); Volcan San Diego, 22–24/VI/1959, 4 spec., J. Bechyné leg. (RBINS, 1 LSC).

73. *Xenochalepus* (s. str.) *omogerus* (Crotch, 1873)

Published records. El Salvador, without further data (Berry 1959). LA LIBERTAD: Santa Tecla (Berry and Salazar 1957). SAN SALVADOR: San Salvador env., 17/VIII/1958, 3 spec. (Uhmann 1961).

Specimens examined. AHUACHAPÁN: Apaneca, 14.–15/VII/1959, 5 spec., 15/VII/1959, 1 spec., J. Bechyné leg. (RBINS, 2 LSC). CUSCATLÁN: Hacienda Colima, 22/VII/1959, 1 spec., J. Bechyné leg. (RBINS). LA PAZ: Volcan San Vicente, Finca La Paz, 1/VIII/1959, 1 spec., J. Bechyné leg. (LSC). SANTA ANA: Volcan San Diego, 22–24/VI/1959, 1 spec., J. Bechyné leg. (LSC).

74. *Xenochalepus* (s. str.) *rufithorax* (Baly, 1885)

Published records. CUSCATLÁN: El Rosario (Berry and Salazar 1957). SAN SALVADOR: San Salvador env., 20/IX/1958, 1 spec. (Uhmann 1961: 20).

Specimens examined. SAN SALVADOR: El Salvador, 12/VII/1959, 2 spec., J. Bechyné leg. (RBINS, LSC).

Remarks. Berry and Salazar (1957) published this species under the name *Xenochalepus rufithorace sanguineus* Baly, which is wrong spelling. He must have meant *X. sanguinosus* (Baly, 1885), which is considered a synonym of *X. rufithorax*.

Subfamily Chrysomelinae

1. *Calligrapha argus* Stål, 1859

Published records. AHUACHAPÁN: Apaneca, 4500 ft, 7–12/IX/2002, D. Marqua, *Calligrapha argus* Stål J. Gómez-Zurita det. 2011 (Gómez-Zurita 2015). LA LIBERTAD: Tamanique, 1000 m, 5/XII/1971, S. & L. Steinhausen, *Calligrapha argus* Stål J. Gómez-Zurita det. 2011 (Gómez-Zurita 2015). LA UNIÓN: No. 444–7813, 15/VI/54, M.S.V. (Gómez-Zurita 2015). Volcan Conchagua, 27–29/V/1958, O.L. Cartwright, *Calligrapha argus* Stål J. Gómez-Zurita det. 2011 (Gómez-Zurita 2015). SANTA ANA: Metapán, No. 444–2806, 5/VII/1954, M.S.V. (Gómez-Zurita 2015).

Remarks. Bechyné and Bechyné (1965a) also report *C. argus* from El Salvador, but do not state specific localities.

2. *Calligrapha bajula* Stål, 1860 new record (Fig. 3A)

Specimens examined. SAN SALVADOR: El Boquerón, 3/VII/1959, Leg. J. Bechyné, Det. J. Gómez-Zurita, 1 spec. (RBINS).

Remarks. For a full inventory of the *Calligrapha* spec. in the RBINS collections, one should consult Merckx et al. (2018), where the records cited here from El Salvador are also included.

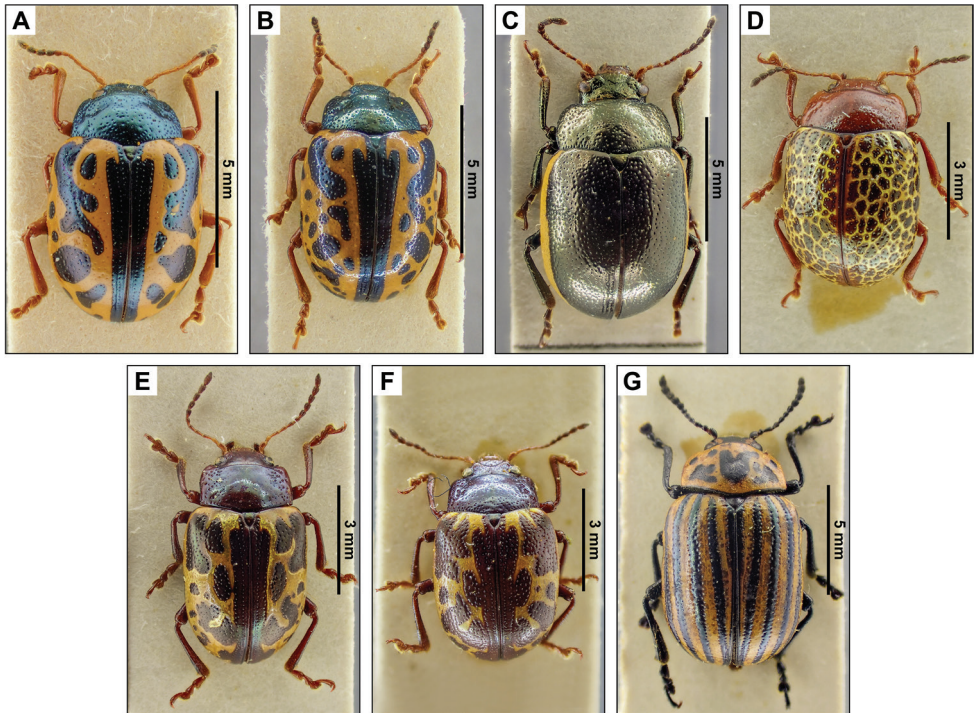


Figure 3. Dorsal pictures of the species of Chrysomelinae from El Salvador currently present in the collections of the RBINS. **A** *Calligrapha bajula* **B** *C. fulvipes* **C** *C. (Zygospila) championi* **D** *C. (Zygospila) guttulosa* **E** *C. (Zygospila) piceicollis* **F** *C. (Zygospila) signatipennis* **G** *Leptinotarsa undecimlineata*. High resolution images can be found at <http://collections.naturalsciences.be/ssh-entomology>.

3. *Calligrapha diversa* Stål, 1859

Published records. SANTA ANA: No. 444.2813, 5/VII/1954, Col. M.S.V., *Calligrapha diversa* Stål J. Gómez-Zurita det. 2011 (Gómez-Zurita 2015).

4. *Calligrapha fulvipes* Stål, 1859 (Fig. 3B)

Published records. CUSCATLÁN: El Rosario (Berry 1957). SAN SALVADOR: 10/VI/1951 (Bechyné 1954); Volcan Santa Ana, 1600–1700 m, 3/VIII/1951 (Bechyné 1954).

Specimens examined. SAN SALVADOR: El Boquerón, 3/VII/1959, Leg. J. Bechyné, Det. J. Bechyné, 40 spec. (RBINS).

Remarks. Bechyné and Bechyné (1965a) also report *C. fulvipes* from El Salvador, but do not state specific localities. Most possibly this originates from the localities from Bechyné (1954) which are cited here. For a full inventory of the *Calligrapha* spec. in the RBINS collections, one should consult Merckx et al. (2018), where the records cited here from El Salvador are also included.

5. *Calligrapha multiguttata* Stål, 1859

Published records. AHUACHAPÁN: Apaneca, MIZA0040488, 13.860000°N, 89.801110°W, 17/VIII/1959, J. Bechyné & B. Bechyné coll., *Calligrapha multiguttata* St. J. Bechyné det. (Gómez-Zurita 2016).

6. *Calligrapha nupta* Stål, 1859 new record

Specimens examined. SAN SALVADOR: El Boquerón, 3/VII/1959, Leg. J. Bechyné, Det. J. Gómez-Zurita, 1 spec. (RBINS).

Remarks. For a full inventory of the *Calligrapha* species in the RBINS collections, one should consult Merckx et al. (2018), where the records cited here from El Salvador are also included.

7. *Calligrapha ramulifera* Stål, 1859

Published records. CUSCATLÁN: Rosario, Cuzcatlan, n°631–39, 17/VII/1955, Col. M.S.V. (Gómez-Zurita 2015). LA LIBERTAD: Los Chorros (Berry 1957); Los Chorros, 700 m, 4/VI/1972, S. & L. Steinhausen, *Calligrapha ramulifera* Stål J. Gómez-Zurita det. 2011 (Gómez-Zurita 2015). SAN SALVADOR: 25/II/1920, E.S.C.A., K.A. Salman collector, *Calligrapha ramulifera* Stål EAC'27 (Gómez-Zurita 2015). SANTA ANA: San Isidro, Cerro Verde 1000 m, 2/VI/1972, S. & L. Steinhausen, 2563, *Calligrapha ramulifera* Stål J. Gómez-Zurita det. 2011 (Gómez-Zurita 2015). UNKNOWN PROVINCE: Landaverde, S. & L. Steinhausen, *Calligrapha ramulifera* Stål Det. J. Watts 1993 (Gómez-Zurita 2015). Servicios Técnicos Cafetería, El Salvador C.A. [one with: 14–E–42], (Gómez-Zurita 2015).

8. *Calligrapha suboculata* Stål, 1859

Published records. SANTA ANA: San Isidro, Cerro Verde, 1000 m, 11/VI/1972, S. & L. Steinhausen coll., *Calligrapha suboculata* Stål J. Gómez-Zurita det. 2011 (Gómez-Zurita, 2018).

9. *Calligrapha (Zygospila) bigenera* (Stål, 1859)

Published records. LA LIBERTAD: Santa Tecla, (Berry 1957).

10. *Calligrapha (Zygospila) championi* (Jacoby, 1879) new record (Fig. 3C)

Specimens examined. SAN SALVADOR: 19/VI/1959, Leg. J. Bechyné, Det. J. Bechyné, 4 spec., (RBINS)

11. *Calligrapha (Zygospila) dulcis* (Stål, 1859)

Remarks. Berry (1959) mentions this species as being present in El Salvador, but does not give specific records.

12. *Calligrapha (Zygospila) guttulosa* (Stål, 1859) new record (Fig. 3D)

Specimens examined. SANTA ANA: Cerro Verde, 16/V/1960, Leg. J. Bechyné, Det. J. Bechyné, 22 spec. (RBINS).

13. *Calligrapha (Zygospila) piceicollis* (Stål, 1859) (Fig. 3E)

Published records. LA LIBERTAD: Santa Tecla (Berry 1957). SAN SALVADOR: La Toma de Aguilares (Berry 1957).

Specimens examined. LA LIBERTAD: Hacienda Chanmico, 20/VI/1960, Leg. J. Bechyné, Det. J. Bechyné, 8 spec. (RBINS).

14. *Calligrapha (Zygospila) signatipennis* (Stål, 1859) (Fig. 3F)
Published records. SAN SALVADOR: 23/IV/1951 and 11/VII/1951, (Bechyné 1954).
Specimens examined. SAN SALVADOR: El Boquerón, 9/V/1960, Leg. J. Bechyné, Det. J. Bechyné, 5 spec. (RBINS).
15. *Chrysomela depressa* Suffrian, 1858
Published records. SAN SALVADOR: San Salvador (Berry 1957).
16. *Leptinotarsa flavitarsis flavitarsis* Guérin, 1855
Published records. CUSCATLÁN: Volcan San Vicente, Finca El Carmen, 1300 m, 11–16/VI/1951 (Bechyné 1954). Hacienda Buena Vista, 1200 m, Volcan Izalco, 26/VII/1951 (Bechyné 1954). LA LIBERTAD: Los Chorros (Berry 1957).
17. *Leptinotarsa undecimlineata* (Stål, 1859) new record (Fig. 3G)
Specimens examined. SANTA ANA: Cerro Verde, 3/I/1960, Leg. J. Bechyné, Det. J. Bechyné, 28 spec. (RBINS).
18. *Plagioderia aeneiventris* Stål, 1860
Published records. CUSCATLÁN: El Rosario, (Berry, 1957).
19. *Stilodes atromaculata* (Stål, 1859)
Published records. LA LIBERTAD: Los Chorros (Berry 1957).
Remarks. Berry and Salazar (1957) mentions this species under its synonym *DeuteroCampta atromaculata*.

Subfamily Cryptocephalinae

1. *Babia* (s. str.) *quadriguttata* Lacordaire, 1848
Published records. LA LIBERTAD: Santa Tecla (Berry and Salazar 1957).
2. *Chlamisus maculipes* (Chevrolat, 1835)
Published records. CUSCATLÁN: El Rosario (Berry and Salazar 1957).
3. *Chlamisus pardalis* (Lacordaire, 1848)
Remarks. Berry (1959) mentions this species as being present in El Salvador, but does not give specific records.
4. *Cryptocephalus trizonatus* Suffrian, 1858
Published records. LA LIBERTAD: Santa Tecla (Berry and Salazar 1957).
5. *Griburius albilabris* (Suffrian, 1852)
Published records. CUSCATLÁN: El Rosario (Berry and Salazar 1957).
6. *Lexiphanes bimaculatus* (Jacoby, 1880)
Published records. CUSCATLÁN: El Rosario (Berry and Salazar 1957).
7. *Megalostomis dimidiata* Lacordaire, 1848
Remarks. Berry (1959) mentions this species as being present in El Salvador, but does not give specific records.
8. *Megalostomis pyropyga* Lacordaire, 1848
Remarks. Berry (1959) mentions this species as being present in El Salvador, but does not give specific records.

Subfamily Eumolpinae

1. ***Brachypnoea cretifera* (Lefèvre, 1875) new record (Fig. 4A)**
Specimens examined. SANTA ANA: Cerro Verde, 16/V/1960, Leg. J. Bechyné, Det. J. Bechyné, 61 spec. (RBINS).
2. ***Brachypnoea lateralis lateralis* (Jacoby, 1881) new record (Fig. 4B)**
Specimens examined. SANTA ANA: Cerro Verde, 16/V/1960, Leg. J. Bechyné, Det. J. Bechyné, 39 spec. (RBINS).
3. ***Brachypnoea lefevrei lefevrei* (Jacoby, 1878) new record (Fig. 4C)**
Specimens examined. SANTA ANA: Cerro Verde, 16/V/1960, Leg. J. Bechyné, Det. J. Bechyné, 21 spec. (RBINS).
4. ***Brachypnoea viridis* (Jacoby, 1878) new record (Fig. 4D)**
Specimens examined. SAN SALVADOR, 23/V/1960, Leg. J. Bechyné, Det. J. Bechyné, 48 spec. (RBINS).
5. ***Chalcophana cincta* Harold, 1874 (Fig. 4E)**
Published records. CUSCATLÁN: El Rosario (Berry 1957).
Specimens examined. LA LIBERTAD: Comasagua, 3/VII/1959, Leg. J. Bechyné, Det. J. Bechyné, “No Type!”, 4 spec. (RBINS). SAN SALVADOR: 23/IV/1960, Leg. J. Bechyné, Det. J. Bechyné, 41 spec. (RBINS), 8/IV/1960, Leg. J. Bechyné, Det. J. Bechyné, 12 spec. (RBINS).
6. ***Chrysodinopsis cupriceps* Lefèvre, 1877 new record (Fig. 4F)**
Specimens examined. SAN SALVADOR: 24/V/1960, Leg. J. Bechyné, Det. J. Bechyné, 14 spec. (RBINS).
7. ***Colaspis freyi* Bechyné, 1950 new record (Fig. 4G)**
Specimens examined. SAN SALVADOR: 10/IX/1959, Leg. J. Bechyné, Det. J. Bechyné, 11 spec. (RBINS), 11/V/1960, Leg. J. Bechyné, Det. J. Bechyné, 12 spec. (RBINS), 19/VI/1959, Leg. J. Bechyné, Det. J. Bechyné, 10 spec. (RBINS), 9/V/1960, Leg. J. Bechyné, Det. J. Bechyné, 17 spec. (RBINS).
Remarks. In the RBINS, these spec. are labeled as *Maecolaspis freyi*. However, all species within *Maecolaspis* Bechyné, 1950 have been placed into *Colaspis* Fabricius, 1801; see Flowers (1996).
8. ***Colaspis impressa* Lefèvre, 1877**
Published records. CUSCATLÁN: El Rosario (Berry 1957).
9. ***Colaspis inconspicua* Jacoby 1890**
Published records. CUSCATLÁN: El Rosario (Berry 1957).
10. ***Colaspis inconstans* (Lefèvre, 1878) new record (Fig. 4H)**
Specimens examined. SAN SALVADOR: Guazapa, 11/V/1960, Leg. J. Bechyné, Det. J. Bechyné, 14 spec. (RBINS).
Remarks. In the RBINS, these spec. are labeled as *Maecolaspis inconstans*. However, all species within *Maecolaspis* Bechyné, 1950 have been placed into *Colaspis* Fabricius, 1801; see Flowers (1996).
11. ***Colaspis lebasi* (Lefèvre, 1878) (Fig. 4I)**
Published records. SAN SALVADOR: 10/VI/1951 (Bechyné 1954).

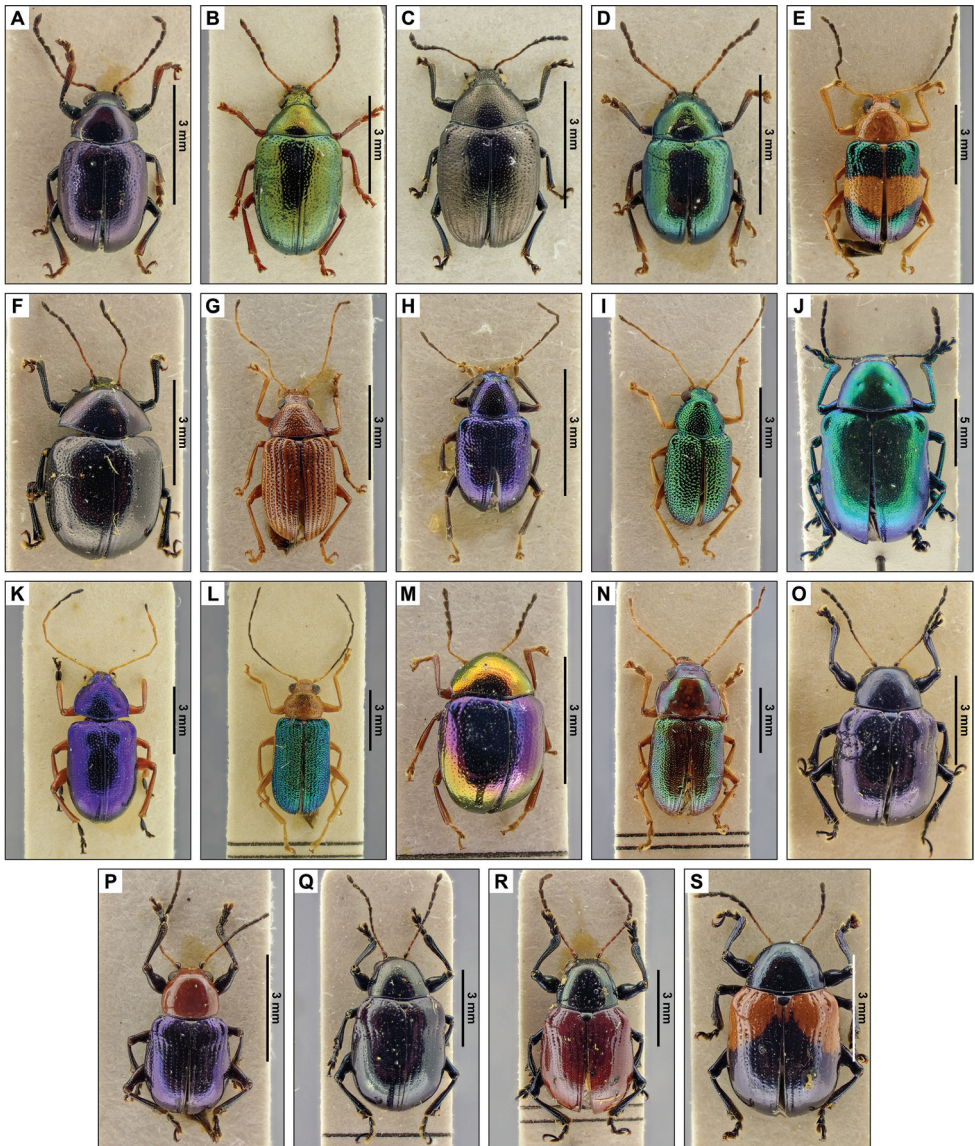


Figure 4. Dorsal pictures of the species of Eumolpinae from El Salvador currently present in the collections of the RBINS. Pictures of *nomina nuda* spec.s are not depicted. **A** *Brachypnoea cretifera* **B** *B. lateralis lateralis* **C** *B. lefeivrei lefeivrei* **D** *B. viridis* **E** *Chalcophana cincta* **F** *Chrysodinopsis cupriceps* **G** *Colaspis freyi* **H** *C. inconstans* **I** *C. lebasi* **J** *Eumolpus robustus* **K** *Nodocolaspis impressa* **L** *Prionodera hirtipennis* **M** *Spintherophyta corusca* **N** *Talurus rugosus* **O** *Typophorus limbatus* **P** *Typophorus mexicanus* **Q** *Typophorus nigrinus obliquus* var. a **R** *Typophorus nigrinus obliquus* var. b **S** *Typophorus nigrinus obliquus* var. c. High resolution images can be found at <http://collections.naturalsciences.be/ssh-entomology>.

Specimens examined. SAN SALVADOR: 19/VI/1959, Leg. J. Bechyné, Det. J. Bechyné, 9 spec. (RBINS).

Remarks. In the RBINS, these spec. are labeled as *Maecolaspis lebasi*. However, all species within *Maecolaspis* Bechyné, 1950 have been placed into *Colaspis* Fabricius, 1801; see Flowers (1996). Bechyné (1955) also states El Salvador under distribution of *C. lebasi* but does not add additional records.

12. *Colaspis melancholica* Jacoby, 1881

Remarks. Flowers (1996) states El Salvador under this species distribution, but does not give specific localities.

13. *Colaspis suturalis* Lefèvre, 1878

Published records. SAN SALVADOR: Toma de Aguilares (Berry 1957).

14. *Colaspis zilchi* (Bechyné, 1954)

Published records. SAN SALVADOR: 30/IV–5/V/1951 (Bechyné 1954).

Specimens examined. SAN SALVADOR: 19/VI/1959, Leg. J. Bechyné, Det. J. Bechyné, 21 spec. (RBINS).

Remarks. These spec. are labeled as *Maecolaspis zilchi*. However, all species within *Maecolaspis* Bechyné, 1950 have been placed into *Colaspis* Fabricius, 1801; see Flowers (1996).

15. *Deuteronoda suturalis suturalis* Lefèvre, 1878

Remarks. Bechyné and Bechyné (1965b) state El Salvador under this species distribution, but do not give any specific localities.

16. *Eumolpus robustus* (Horn, 1885) new record (Fig. 4J)

Specimens examined. SAN SALVADOR: 23/V/1960, Leg. J. Bechyné, Det. J. Bechyné, 4 spec. (RBINS).

17. *Fidia unistriata* Jacoby, 1882

Remarks. Berry (1959) mentions this species as being present in El Salvador, but does not give specific records.

18. *Freudeita melancholica* (Jacoby, 1881)

Remarks. Bechyné and Bechyné (1969b) state El Salvador under this species distribution, but do not give any specific localities.

19. *Glyptoscelis chontalensis* Jacoby, 1882

Remarks. Flowers (1996) states El Salvador under this species distribution, but does not give specific localities.

20. *Habrophora maculipennis* Jacoby, 1882

Remarks. Berry (1959) mentions this species as being present in El Salvador, but does not give specific records.

21. *Metachroma vittipennis* Blake, 1970

Remarks. Flowers (1996) states El Salvador under this species distribution, but does not give specific localities.

22. *Nodocolaspis impressa* (Lefèvre, 1877) new record (Fig. 4K)

Specimens examined. LA LIBERTAD: Hacienda Argentina, 11/IX/1959, Leg. J. Bechyné, Det. J. Bechyné, 5 spec. (RBINS).

Remarks. In Flowers (1996), this species is listed under *Colaspis* Fabricius, 1801. However, *Nodocolaspis* Bechyné, 1949 is not listed here as a synonym of *Colaspis*. The correct placement of this species thus remains uncertain for the authors.

23. *Prionodera hirtipennis* Jacoby, 1881 new record (Fig. 4L)
Specimens examined. SAN SALVADOR: El Boquerón, 25/V/1960, Leg. J. Bechyné, Det. J. Bechyné, 24 spec. (RBINS).
24. *Promecosoma nobilitatum* Lefèvre, 1877
Published records. SAN SALVADOR: 30/IV–5/V/1951 (Bechyné 1954).
25. *Spintherophyta corrusca* (Lefèvre, 1877) new record (Fig. 4M)
Specimens examined. SAN SALVADOR: El Boquerón, 25/IV/1960, Leg. J. Bechyné, Det. J. Bechyné, 15 spec. (RBINS), 24/V/1960, Leg. J. Bechyné, Det. J. Bechyné, 15 spec. (RBINS).
26. *Talurus rugosus* (Jacoby, 1882) (Fig. 4N)
Published records. CUSCATLÁN: El Rosario; SONSONATE: Santa Cruz Porriño (Berry 1957).
Specimens examined. LA UNIÓN: Cutuco, 3/VI/1959, Leg. J. Bechyné, Det. J. Bechyné, 32 spec. (RBINS). SAN SALVADOR: 19/VI/1959, Leg. J. Bechyné, Det. J. Bechyné, 26 spec. (RBINS), 23/V/1960, Leg. J. Bechyné, Det. J. Bechyné, 1 spec. (RBINS).
27. *Typophorus limbatus* Jacoby, 1891 new record (Fig. 4O)
Specimens examined. LA LIBERTAD: Hacienda Argentina, 19/V/1960, Leg. J. Bechyné, Det. J. Bechyné, 44 spec. (RBINS).
28. *Typophorus mexicanus* (Jacoby, 1882) new record (Fig. 4P)
Specimens examined. SAN SALVADOR: El Boquerón, 9/V/1960, Leg. J. Bechyné, Det. J. Bechyné, 48 spec. (RBINS).
29. *Typophorus nigrinus obliquus* Baly, 1859 new record (Fig. 4Q,R,S)
Specimens examined. SAN SALVADOR: Cartagena, 19/V/1959, Leg. J. Bechyné, Det. J. Bechyné, 24 spec. (RBINS), 23/V/1960, Leg. J. Bechyné, Det. J. Bechyné, 26 spec. (RBINS).

Subfamily Galerucinae – Alticini

1. *Acallepitrix anila* Bechyné & Bechyné, 1963
Published records. LA LIBERTAD: Los Chorros, 25/VI/1959 (Bechyné and Bechyné 1963).
2. *Acallepitrix chlypeata heteronitens* Bechyné & Bechyné, 1963
Published records. MORAZÁN: Perquín, 22/IX/1959 (Bechyné and Bechyné 1963). SAN SALVADOR: Capital, 27/IX/1959 (Bechyné and Bechyné 1963).
3. *Acallepitrix estebania* Bechyné & Bechyné, 1963 (Fig. 5A)
Published records. AHUACHAPÁN: Apaneca, 14–17/VIII/1959 (Bechyné and Bechyné 1963). LA LIBERTAD: Hacienda Argentina, 4/IV/1960 (Bechyné and Bechyné 1963). LA PAZ: Volcan San Vicente, Finca La Paz, 1–10/VI/1959 (Bechyné and Bechyné 1963). SAN SALVADOR: Capital, 16/VI/1959 (Bechyné and Bechyné 1963), Capital, 20/VIII/1959 (Bechyné and Bechyné 1963); Cerro San

Jacinto, 17/IX/1959 (Bechyné and Bechyné 1963). SANTA ANA: Volcan San Diego, 23/VI/1959 (Bechyné and Bechyné 1963).

Specimens examined. LA LIBERTAD: Hacienda Argentina, 4/IV/1960, Leg. J. Bechyné, Det. J. Bechyné, Paratype, 5 spec. (RBINS).

4. *Acallepitrix hylophila* Bechyné & Bechyné, 1963

Published records. LA PAZ: Volcan San Vicente, Finca La Paz, 1–10/VIII/1959 (Bechyné and Bechyné 1963).

5. *Acallepitrix iris* Bechyné & Bechyné, 1963

Published records. MORAZÁN: Perquín, 22/IX/1959 (Bechyné and Bechyné 1963). SAN SALVADOR: Cerro San Jacinto, 17/IX/1959 (Bechyné and Bechyné 1963).

6. *Acallepitrix morazanica* Bechyné & Bechyné, 1963

Published records. MORAZÁN: Perquín, 22/IX/1959 (Bechyné and Bechyné 1963). SAN VICENTE: Volcan San Vicente, 1–10/VIII/1959 (Bechyné and Bechyné 1963).

7. *Acallepitrix orbitalis* Bechyné & Bechyné, 1963

Published records. SAN SALVADOR: Cerro San Jacinto, 17/IX/1959 (Bechyné and Bechyné 1963). SAN VICENTE: Volcan San Vicente, 1–10/VIII/1959 (Bechyné and Bechyné 1963).

8. *Acallepitrix persuavis* Bechyné & Bechyné, 1963

Published records. AHUACHAPÁN: Apaneca, 14–17/VII/1959 (Bechyné and Bechyné 1963).

9. *Acallepitrix ponderosa* Bechyné & Bechyné, 1963

Published records. LA LIBERTAD: Hacienda Chanmico, 16/VI/1959 (Bechyné and Bechyné 1963). LA PAZ: Volcan San Vicente, Finca La Paz, 1–10/VIII/1959 (Bechyné and Bechyné 1963). SAN SALVADOR: Capital, 9/VI/1959 (Bechyné and Bechyné 1963). SANTA ANA: Volcan San Diego, 22–24/VI/1959 (Bechyné and Bechyné 1963).

10. *Acallepitrix rubrifrons* Bechyné & Bechyné, 1963

Published records. LA PAZ: Volcan San Vicente, Finca La Paz, 1–10/VIII/1959 (Bechyné and Bechyné 1963). SAN SALVADOR: Capital, 11/VI/1959 (Bechyné and Bechyné 1963).

11. *Acanthonycha jacobyi* Bechyné, 1959

Published records. SAN SALVADOR: 11/VI/1959, 30/VI/1959, 6/VII/1959 (Bechyné and Bechyné 1960).

12. *Acrocyum interposita* (Bechyné & Bechyné, 1963)

Published records. AHUACHAPÁN: Apaneca, 14–17/VII/1959 (Bechyné and Bechyné 1963). SAN SALVADOR: Capital, 12/VI/1959 (Bechyné and Bechyné 1963).

13. *Alagoasa acutangula* (Jacoby, 1886) (Fig. 5B)

Published records. CHALATENANGO: La Palma, 7/VII/1959 (Bechyné and Bechyné 1959). LA LIBERTAD: Comasagua, 1/VII/1959 and 3/VII/1959 (Bechyné and Bechyné 1963). LA PAZ: Volcan San Vicente, Finca La Paz, 1–10/VIII/1959 (Bechyné and Bechyné 1963). SAN SALVADOR: Capital, 20/VI/1959

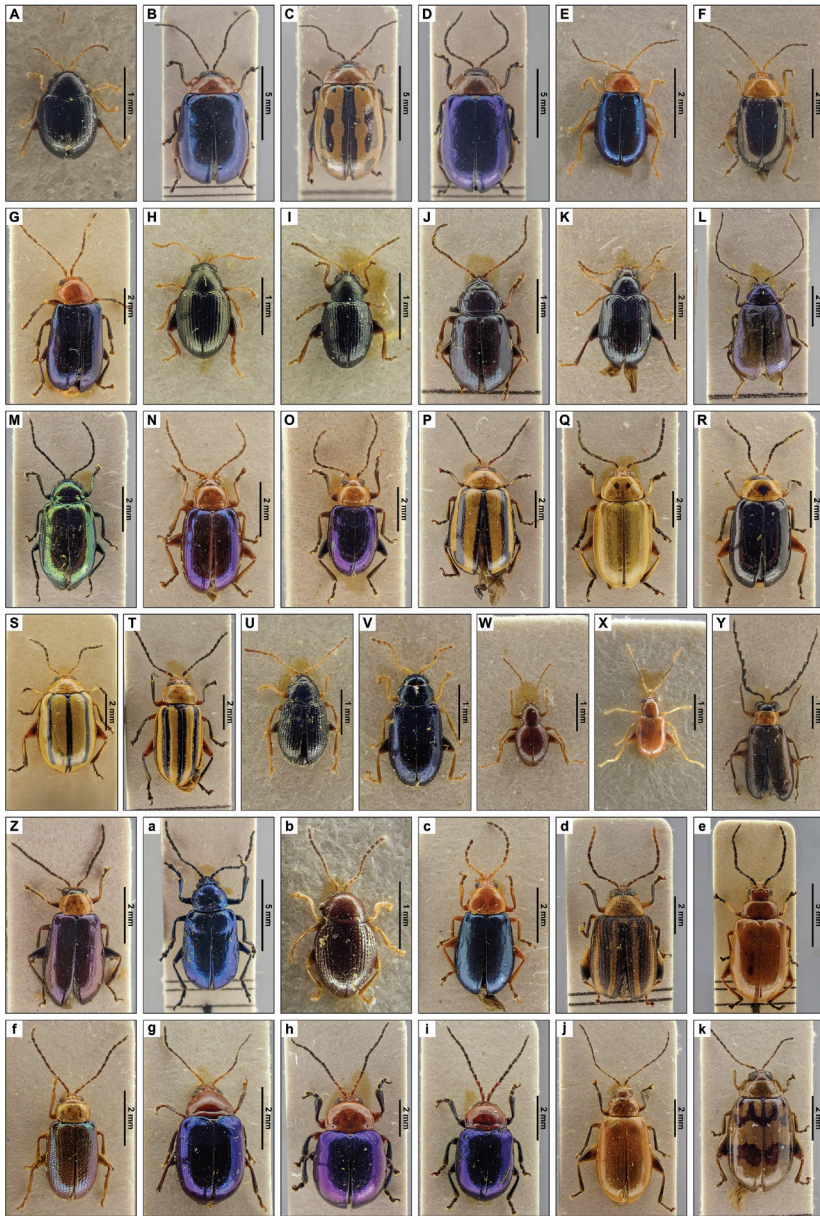


Figure 5. Dorsal pictures of the species of Galerucinae – Alticini from El Salvador currently present in the collections of the RBINS. Pictures of *nomina nuda* spec.s are not depicted. **A** *Acallepitrix estebania* **B** *Alagoasa acutangula* **C** *A. bipunctata* **D** *A. ceracollis* **E** *Ayalaia minor* **F** *A. salvadorensis* **G** *Cacoscelis guazapa* **H** *Chaetocnema fulvicornis* **I** *C. mexicana* **J** *Chalatenanganya quadrifida* **K** *Cyrsylus reticollis* **L** *Deuteraltica longicornis* **M** *Diphaltica trifiniensis* **N** *Diphaulaca cordobae* **O** *D. wagneri* **P** *Disonycha brevilineata* **Q** *D. figurata* **R** *D. nigrita* **S** *D. ovata* **T** *D. reticollis* **U** *Epitrix hirtula* **V** *Genaphthona transversicollis* **W** *Longitarsus berryi* **X** *L. varicornis* **Y** *Lupraea fulvicollis* **Z** *L. portilloi* **a** *Macrohaltica salvadorensis* **b** *Oreinodera aptera* **c** *Phrynocephala laevicollis* **d** *Physimerus femoralis* **e** *Platiprosopus acutangulus* **f** *Plectotetra surquia* **g** *Syphrea balneria* **h** *S. pretiosa* **i** *S. quintanillai* **j** *Systema variabilis* **k** *Walterianella venustula*. High resolution images can be found at <http://collections.naturalsciences.be/ssh-entomology>.

and 2/VII/1959 (Bechyné and Bechyné 1963). SANTA ANA: Volcan San Diego, 24/VI/1959 (Bechyné and Bechyné 1963).

Specimens examined. SAN SALVADOR: 13/VI/1959, Leg. J. Bechyné, Det. J. Bechyné, 10 spec. (RBINS).

Remarks. Berry (1959) also mentions this species as being present in El Salvador, but does not give specific records.

14. *Alagoasa bipunctata* (Chevrolat, 1834) (Fig. 5C)

Published records. CHALATENANGO: La Palma, 7/VII/1959 (Bechyné and Bechyné 1963). CUSCATLÁN: Hacienda Colima, 27/VII/1959, (Bechyné and Bechyné 1963). LA PAZ: Volcan San Vicente, Finca La Paz, 1–10/VIII/1959 (Bechyné and Bechyné 1963). SAN SALVADOR: Capital, 8/VI/1959, 13/VI/1959, 20/VI/1959, 6/VII/1959, 20/VII/1959, 24/VII/1959, 11/VIII/1959, 23/V/1960, (Bechyné and Bechyné 1963); Lago Ilopango, 24/VII/1959 (Bechyné and Bechyné 1963); Hacienda Argentina, 17/VI/1959 and 20/VII/1959 (Bechyné and Bechyné 1963). SANTA ANA: Volcan San Diego, 22–24/VI/1959 (Bechyné and Bechyné 1963).

Specimens examined. SAN SALVADOR: 23/V/1960, Leg. J. Bechyné, Det. J. Bechyné, 20 spec. (RBINS).

15. *Alagoasa ceracollis* (Say, 1835) (Fig. 5D)

Published records. CHALATENANGO: La Palma, 7/VII/1959 (Bechyné and Bechyné 1963). LA PAZ: Volcan San Vicente, Finca La Paz, 1–10/VIII/1959 (Bechyné and Bechyné 1963). LA LIBERTAD: Los Chorros, 27/VI/1959 (Bechyné and Bechyné 1963); Comasagua, 1/VII/1959 and 3/VII/1959 (Bechyné and Bechyné 1963); Hacienda Argentina, 17/VI/1959 (Bechyné and Bechyné 1963). MORAZÁN: Perquín, 22/IX/1959 (Bechyné and Bechyné 1963). SAN SALVADOR: 10/VI/1951, 21/VI/1951, 23/VI/1951, 13/VIII/1951, 15/IX/1951 (Bechyné 1954); Capital, 7/VI/1959, 20/VI/1959, 30/VI/1959, 28/VII/1959, 24/I/1960, 7/VI/1959, 23/V/1960 (Bechyné and Bechyné 1963). SANTA ANA: Volcan San Diego, 23/VI/1959 (Bechyné and Bechyné 1963).

Specimens examined. SAN SALVADOR: 23/V/1960, Leg. J. Bechyné, Det. J. Bechyné, 18 spec. (RBINS).

16. *Alagoasa decemguttata* (Fabricius, 1801)

Published records. CUSCATLÁN: El Rosario (Berry 1957). SONSONATE: San Julián (Berry 1957).

17. *Alagoasa extrema* (Harold, 1880)

Published records. LA PAZ: Volcan San Vicente, Finca La Paz, 1–10/VIII/1959 (Bechyné and Bechyné 1963). SAN SALVADOR: Capital, 24/IV/1960 (Bechyné and Bechyné 1963); Lago Ilopango, 24/VII/1959 (Bechyné and Bechyné 1963).

18. *Alagoasa paraphana* Bechyné & Bechyné, 1963

Published records. LA LIBERTAD: Comasagua, 1/VII/1959 (Bechyné and Bechyné 1963). LA PAZ: Volcan San Vicente, Finca La Paz, 1–10/VIII/1959 (Bechyné and Bechyné 1963).

19. *Alagoasa seriata* (Baly, 1878)

Published records. CHALATENANGO: La Palma, 7–8/VII/1959 (Bechyné and Bechyné 1963). CUSCATLÁN: El Rosario (Berry 1957). LA PAZ: Volcan San Vicente, Finca La Paz, 1–10/VIII/1959 (Bechyné and Bechyné 1963). SAN SALVADOR: Capital, 20/VI/1959, 30/VI/1959, 6/VII/1959 (Bechyné and Bechyné 1963). SANTA ANA: Volcan San Diego, 22/VI/1959 (Bechyné and Bechyné 1963).

Remarks. Berry (1959) also mentions this species as being present in El Salvador, but does not give specific records.

20. *Alagoasa virgata* (Harold, 1880)

Published records. CUSCATLÁN: El Rosario (Berry 1957).

21. *Allochroma coccineum* Clark, 1860

Remarks. Berry (1959) mentions this species as being present in El Salvador, but does not give specific records.

22. *Altica brevis* (Harold, 1875)

Published records. AHUACHAPÁN: Hacienda Monte Cristo, 2200 m, 4–8/VI/1951 (Bechyné 1954).

23. *Asphaera abdominalis* (Chevrolat, 1835)

Published records. AHUACHAPÁN: Apaneca, 14–17/VII/1959 (Bechyné and Bechyné 1963).

24. *Asphaera reichei* (Harold, 1876)

Published records. LA PAZ: Volcan San Vicente. Finca La Paz, 1–10/VIII/1959 (Bechyné and Bechyné 1963). SAN SALVADOR: El Salvador, IX/1950, Mertens (Bechyné 1954). SANTA ANA: Cerro Verde, 16/V/1960 (Bechyné and Bechyné 1963).

25. *Ayalaiia minor* Bechyné & Bechyné, 1960 (Fig. 5E)

Published records. AHUACHAPÁN: Apaneca, 14–17/VI/1959 (Bechyné and Bechyné 1960). LA LIBERTAD: Hacienda Argentina, 20/VII/1959 (Bechyné and Bechyné 1960). LA PAZ: Volcan San Vicente, Finca La Paz, 1–10/VIII/1959, (Bechyné and Bechyné 1960). MORAZÁN: Perquín, 22/IX/1959 (Bechyné and Bechyné 1960). SAN SALVADOR: Capital, 8/VI/1959, 19/VI/1959, 20/VII/1959, 20/VIII/1959 (Bechyné and Bechyné 1960); Cerro San Jacinto, 17/IX/1959 (Bechyné and Bechyné 1960); El Boquerón, 10/VI/1959 (Bechyné and Bechyné 1960).

Specimens examined. LA PAZ: Volcan San Vicente, Finca La Paz, 1/VIII/1959, Leg. J. Bechyné, Det. J. Bechyné, Paratype, 19 spec. (RBINS).

26. *Ayalaiia salvadorensis* Bechyné & Bechyné, 1960 (Fig. 5F)

Published records. CHALATENANGO: La Palma, 9/VII/1959 (Bechyné and Bechyné 1960). LA LIBERTAD: Hacienda Argentina, 17/VI/1959, 20/VII/1959, 16/V/1960 (Bechyné and Bechyné 1960). SAN SALVADOR: Capital, 19–20/VI/1959 (Bechyné and Bechyné 1960); El Boquerón, 10/VI/1959 (Bechyné and Bechyné 1960). SANTA ANA: Volcan San Diego, 22–24/VI/1959, (Bechyné and Bechyné 1960).

Specimens examined. LA LIBERTAD: Hacienda Argentina, 16/V/1960, Leg. J. Bechyné, Det. J. Bechyné, Paratype, 51 spec. (RBINS).

27. *Blepharida godmani* Jacoby 1885

Published records. LA LIBERTAD: Hacienda Argentina, 19/V/1960, J. & B. Bechyné (Furth 1998).

28. *Blepharida suturalis* Jacoby, 1885

Published records. LA LIBERTAD: Hacienda Argentina, 19/V/1960, (Furth 1998). SAN SALVADOR: El Salvador, A. Martinez Cuestas (Furth 1998); San Salvador, 30/IV–5/V/1951 (Bechyné 1954); Capital, 3/V/1960, 16/V/1960, 18/V/1960, (Bechyné and Bechyné 1963); Guazapa, 11/V/1960 (Bechyné and Bechyné 1963), 9–19/V/1958, O. L. Cartwright, at light (Furth 1998). SANTA ANA: Volcan San Diego, 22/VI/1959 (Bechyné and Bechyné 1963).

29. *Cacoscelis guazapa* Bechyné & Bechyné, 1960 (Fig. 5G)

Published records. SAN SALVADOR: Guazapa, 25/IV/1960 (Bechyné and Bechyné 1960).

Specimens examined. SAN SALVADOR: Guazapa, 25/IV/1960, Leg. J. Bechyné, Det. J. Bechyné, 57 spec. (RBINS).

30. *Capraita maculata* (Harold, 1876)

Published records. AHUACHAPÁN: Apaneca, 14–17/VII/1959 (Bechyné and Bechyné 1963). SANTA ANA: Cerro Verde, 16/V/1960, (Bechyné and Bechyné 1963).

31. *Centralaphthona desmodita* Bechyné & Bechyné, 1960

Published records. CHALATENANGO: La Palma, 7/VII/1959 (Bechyné and Bechyné 1960). MORAZÁN: Perquín, 22/IX/1959 (Bechyné and Bechyné 1960). SAN SALVADOR: Capital, 15/VI/1959, 27/VI/1959, 20/VII/1959, 20/VIII/1959 (Bechyné and Bechyné 1960).

32. *Centralaphthona deyrollei* (Baly, 1877)

Published records. SAN SALVADOR: El Boquerón, 10/VI/1959 (Bechyné and Bechyné 1960).

33. *Centralaphthona diversa* (Baly, 1877)

Published records. CHALATENANGO: La Palma, 9/VII/1959 (Bechyné and Bechyné 1960). MORAZÁN: Perquín, 22/IX/1959 (Bechyné and Bechyné 1960). SAN SALVADOR, 11/VI/1959 (Bechyné and Bechyné 1960). SANTA ANA: Volcan San Diego, 23–24/VI/1959 (Bechyné and Bechyné 1960).

34. *Centralaphthona durri* Bechyné & Bechyné, 1960

Published records. LA LIBERTAD: Hacienda Argentina, 17/VI/1959 (Bechyné and Bechyné 1960). SAN SALVADOR: 13/VI/1959 and 19/VI/1959 (Bechyné and Bechyné 1960).

35. *Centralaphthona gaetana* Bechyné & Bechyné, 1960

Published records. SAN SALVADOR: 3/X/1959 (Bechyné and Bechyné 1960).

36. *Centralaphthona lessmanni* Bechyné & Bechyné, 1960

Published records. LA PAZ: Volcan San Vicente, Finca La Paz, 1–10/VIII/1959 (Bechyné and Bechyné 1960). SAN SALVADOR: 19/VI/1959 (Bechyné and Bechyné 1960).

37. *Centralaphthona nemorivaga* Bechyné & Bechyné, 1960

Published records. SAN SALVADOR: Cerro San Jacinto, 17/IX/1959 (Bechyné and Bechyné 1960).

- 38. *Centralaphthona obscuripennis* (Jacoby, 1885)**
Published records. SAN SALVADOR: 7/VI/1959 (Bechyné and Bechyné 1960).
- 39. *Centralaphthona orbitifera* Bechyné & Bechyné, 1960**
Published records. LA PAZ: Volcan San Vicente, Finca La Paz, 1–10/VIII/1959 (Bechyné and Bechyné 1960). SANTA ANA: Volcan San Diego, 24/VI/1959 (Bechyné and Bechyné 1960).
- 40. *Centralaphthona peripherica* Bechyné & Bechyné, 1960**
Published records. MORAZÁN: Perquín, 22/IV/1959, (Bechyné and Bechyné 1960). SAN SALVADOR: 20/VIII/1959 (Bechyné and Bechyné 1960). SANTA ANA: Trifinio, 11/X/1959 (Bechyné and Bechyné 1960).
- 41. *Centralaphthona perpetualis* Bechyné & Bechyné, 1960**
Published records. LA LIBERTAD: Hacienda Argentina, 17/VI/1959 (Bechyné and Bechyné 1960).
- 42. *Centralaphthona primordialis* Bechyné & Bechyné, 1960**
Published records. AHUACHAPÁN: Apaneca, 14–17/VII/1959 (Bechyné and Bechyné 1960).
- 43. *Centralaphthona selecta* Bechyné & Bechyné, 1960**
Published records. SANTA ANA: Volcan San Diego, 23–29/VI/1959 (Bechyné and Bechyné 1960).
- 44. *Centralaphthona xanthochrysa* Bechyné & Bechyné, 1960**
Published records. SANTA ANA: Volcan San Diego, 29/VI/1959 (Bechyné and Bechyné 1960).
- 45. *Chaetocnema acrolabris* Bechyné & Bechyné, 1963**
Published records. SANTA ANA: Trifinio, 11/X/1959 and 13/X/1959 (Bechyné and Bechyné 1963).
- 46. *Chaetocnema arcifera* Bechyné & Bechyné, 1963**
Published records. LA PAZ: Volcan San Vicente, Finca La Paz, 1–10/VIII/1959 (Bechyné and Bechyné 1963). SAN SALVADOR: Capital, 11/VI/1959 (Bechyné and Bechyné 1963); Guazapa, 10/IX/1959 (Bechyné and Bechyné 1963).
- 47. *Chaetocnema bellorhina* Bechyné & Bechyné, 1963**
Published records. AHUACHAPÁN: Apaneca, 14–17/VII/1959 (Bechyné and Bechyné 1963).
- 48. *Chaetocnema confinis* Crotch, 1873**
Published records. King and Saunders (1984) mention this species being present in El Salvador, but do not state specific records.
- 49. *Chaetocnema diegoana* Bechyné & Bechyné, 1963**
Published records. CHALATENANGO: La Palma, 7/VII/1959 (Bechyné and Bechyné 1963). SANTA ANA: Volcan San Diego, 23–24/VI/1959 (Bechyné and Bechyné 1963).
- 50. *Chaetocnema fulvicornis* Jacoby, 1885 new record (Fig. 5H)**
Specimens examined. SAN SALVADOR: El Boquerón, 9/V/1960, Leg. J. Bechyné, Det. J. Bechyné, 66 spec. (RBINS).

51. *Chaetocnema guija* Bechyné & Bechyné, 1963

Published records. SANTA ANA: Volcan San Diego, 22/VI/1959 (Bechyné and Bechyné 1963). LA PAZ: Volcan San Vicente, Finca La Paz, 1–10/VIII/1959 (Bechyné and Bechyné 1963).

52. *Chaetocnema itica* Bechyné & Bechyné, 1963

Published records. SAN SALVADOR: Capital, 6/VIII/1959 (Bechyné and Bechyné 1963).

53. *Chaetocnema jacinta* Bechyné & Bechyné, 1963

Published records. SAN SALVADOR: Cerro San Jacinto, 17/XI/1959 (Bechyné and Bechyné 1963).

54. *Chaetocnema lagunaria* Bechyné & Bechyné, 1963

Published records. AHUACHAPÁN: Apaneca, 14–17/VII/1959 (Bechyné and Bechyné 1963).

55. *Chaetocnema leptocephala* Bechyné & Bechyné, 1963

Published records. AHUACHAPÁN: Apaneca, 14–17/VII/1959 (Bechyné and Bechyné 1963).

56. *Chaetocnema mexicana* Baly, 1877 (Fig. 51)

Published records. CHALATENANGO: La Palma, 7/VII/1959 (Bechyné and Bechyné 1963). LA LIBERTAD: Hacienda Chanmico, 3/IX/1959 (Bechyné and Bechyné 1963); Hacienda Argentina, 20/VII/1959 (Bechyné and Bechyné 1963). SAN SALVADOR: Guazapa, 11/V/1960 (Bechyné and Bechyné 1963). SANTA ANA: Volcan Diego, 22–23/VI/1959 (Bechyné and Bechyné 1963); Trifinio, 14/X/1959 (Bechyné and Bechyné 1963).

Specimens examined. SAN SALVADOR: Guazapa, 11/V/1960, Leg. J. Bechyné, Det. J. Bechyné, 102 spec. (RBINS).

57. *Chaetocnema nepotica* Bechyné & Bechyné, 1963

Published records. MORAZÁN: Perquín, 23/IX/1959 (Bechyné and Bechyné 1963).

58. *Chaetocnema obtusilabris* Bechyné & Bechyné, 1963

Published records. MORAZÁN: Perquín, 22/IX/1959 (Bechyné and Bechyné 1963). SANTA ANA: Volcan San Diego, 22/VI/1959 (Bechyné and Bechyné 1963).

59. *Chaetocnema perquinensis* Bechyné & Bechyné, 1963

Published records. MORAZÁN: Perquín, 22/IX/1959 (Bechyné and Bechyné 1963). SAN SALVADOR: Capital, 19/VI/1959, 28/VII/1959, 27/IX/1959 (Bechyné and Bechyné 1963); El Boquerón, 20/VIII/1959 (Bechyné and Bechyné 1963). SANTA ANA: Trifinio, 14/X/1959 (Bechyné and Bechyné 1963).

60. *Chaetocnema sitarina* Bechyné & Bechyné, 1963

Published records. AHUACHAPÁN: Apaneca, 14–17/VII/1959 (Bechyné and Bechyné 1963).

61. *Chaetocnema vega* Bechyné & Bechyné, 1963

Published records. LA PAZ: Volcan San Vicente, Finca La Paz, 1–10/VIII/1959 (Bechyné and Bechyné 1963). SANTA ANA: Volcan San Diego, 22/VI/1959 (Bechyné and Bechyné 1963). SAN SALVADOR: Cerro San Jacinto, 17/IX/1959 (Bechyné and Bechyné 1963).

62. *Chalatenanganya quadrifida* Bechyné & Bechyné, 1963 (Fig. 5J)

Published records. CHALATENANGO: La Palma, 9/VII/1959 (Bechyné and Bechyné 1963). LA LIBERTAD: Comasagua, 1/VII/1959 and 3/VII/1959 (Bechyné and Bechyné 1963); Los Chorros, 29/VI/1959 (Bechyné and Bechyné 1963); Hacienda Argentina, 20/VII/1959 and 18/V/1960 (Bechyné and Bechyné 1963). LA UNIÓN: Cutuco, 2–4/VI/1959 (Bechyné and Bechyné 1963). SAN SALVADOR: Capital, 12/VI/1959, 16/VI/1959, 30/VI/1959 (Bechyné and Bechyné 1963); El Boquerón, 10/VI/1959 (Bechyné and Bechyné 1963); Cerro San Jacinto, 17/IX/1959 (Bechyné and Bechyné 1963). SANTA ANA: Volcan San Diego, 23–24/VI/1959 (Bechyné and Bechyné 1963).

Specimens examined. LA LIBERTAD: Hacienda Argentina, 18/V/1960, Leg. J. Bechyné, Det. J. Bechyné, Paratype, 53 spec. (RBINS).

63. *Cyrsylus recticollis* Jacoby, 1891 (Fig. 5K)

Published records. LA LIBERTAD: Comasagua, 1/VII/1959 and 3/VII/1959 (Bechyné and Bechyné 1963). MORAZÁN: Perquín, 25/IX/1959 (Bechyné and Bechyné 1963). SAN SALVADOR: Capital, 6/VI/1959, 11/VI/1959, 18–19/VI/1959, 21/VII/1959, 27/IX/1959, (Bechyné and Bechyné 1963); Cerro San Jacinto, 17/IX/1959 (Bechyné and Bechyné 1963); Guazapa, 10/IV/1960 (Bechyné and Bechyné 1963). SANTA ANA: Volcan San Diego, 24/VI/1959 (Bechyné and Bechyné 1963). USULUTÁN: Berlín, V/1898, A. & F. Solari (Bechyné 1957).

Specimens examined. LA LIBERTAD: Santa Tecla, 28/IV/1960, Leg. J. Bechyné, Det. J. Bechyné, 24 spec. (RBINS); Tamanigue, 4/V/1960, Leg. J. Bechyné, Det. J. Bechyné, 25 spec. (RBINS).

64. *Deuteraltica longicornis* (Jacoby, 1891) (Fig. 5L)

Published records. AHUACHAPÁN: Apaneca, 14–17/VII/1959 (Bechyné and Bechyné 1960). SAN SALVADOR: Capital, 8/VI/1959 (Bechyné and Bechyné 1960); El Boquerón, 10/VI/1959 (Bechyné and Bechyné 1960).

Specimens examined. SAN SALVADOR: El Boquerón, 9/V/1960, Leg. J. Bechyné, Det. J. Bechyné, 53 spec. (RBINS).

Remarks. Berry (1959) also mentions this species as being present in El Salvador, but does not give specific records.

65. *Dinaltica anilina* Bechyné & Bechyné, 1963

Published records. MORAZÁN: Perquín, 22/IX/1959 (Bechyné and Bechyné 1963).

66. *Diphaltica trifiniensis* Bechyné & Bechyné, 1960 (Fig. 5M)

Published records. SANTA ANA: Trifinio, 11/X/1959 and 6–8/III/1960 (Bechyné and Bechyné 1960).

Specimens examined. SANTA ANA: Trifinio, 6/III/1960, Leg. J. Bechyné, Det. J. Bechyné, Paratype, 51 spec. (RBINS).

67. *Diphaulaca aulica aulica* Barber, 1941

Published records. SAN SALVADOR, 5/VII/1951 (Bechyné 1954).

Specimens examined. UNKNOWN PROVINCE: Cristobal, 20/V/1959, Leg. J. Bechyné, Det. J. Bechyné, 13 spec. (RBINS).

Remarks. The RBINS spec. are labeled as *D. panama*, which is currently a junior synonym of *D. aulica aulica* (Olivier, 1808); see Furth and Savini (1996). The record from Bechyné (1954) names this species as *Diphaulaca aulica* (Olivier, 1888).

68. *Diphaulaca aulica cordobae* Barber, 1941 (Fig. 5N)

Published records. AHUACHAPÁN: Apaneca, 14–17/VII/1959 (Bechyné and Bechyné 1960). CUSCATLÁN: Hacienda Colima, 22/VII/1959 (Bechyné and Bechyné 1960). LA LIBERTAD: Hacienda Chanmico, 3/IX/1959 and, 20/VI/1960 (Bechyné and Bechyné 1960); Hacienda Argentina, 15/VI/1959, and 20/VII/1959 (Bechyné and Bechyné 1960); Los Chorros, 29/VI/1959 (Bechyné and Bechyné 1960); Comasagua, 1/VII/1959 and 3/VII/1959 (Bechyné and Bechyné 1960). LA PAZ: Volcan San Vicente, Finca La Paz, 1–10/VIII/1959 (Bechyné and Bechyné 1960). LA UNIÓN: Cutuco, 2–4/VI/1959 (Bechyné and Bechyné 1960). SAN SALVADOR: Capital, 7/VI/1959, 11/VI/1959, 13/VI/1959, 15/VI/1959, 19/VI/1959, 20/VI/1959, 20/VII/1959, 24/VII/1959, 28/VII/1959, 20/VIII/1959, 24/IV/1960 (Bechyné and Bechyné 1960); Cerro San Jacinto, 17/IX/1959 (Bechyné and Bechyné 1960); Lago Ilopango, 24/VII/1959 (Bechyné and Bechyné 1960); El Boquerón, 10/VI/1959 and 20/VIII/1959 (Bechyné and Bechyné 1960); Guazapa, 10/IX/1959 and 25/IV/1960 (Bechyné and Bechyné 1960). SANTA ANA: Volcan San Diego, 22–24/VI/1959 (Bechyné and Bechyné 1960).

Specimens examined. LA LIBERTAD: Comasagua, 1/VII/1959, Leg. J. Bechyné, Det. J. Bechyné, 31 spec. (RBINS). LA UNIÓN: Cutuco, 3/VI/1959, Leg. J. Bechyné, Det. J. Bechyné, 24 spec. (RBINS).

69. *Diphaulaca salvadorensis* Bechyné & Bechyné, 1960

Published records. CHALATENANGO: La Palma, 7/VII/1959 (Bechyné and Bechyné 1960). LA LIBERTAD: Los Chorros, 29/VI/1959 (Bechyné and Bechyné 1960). SAN SALVADOR, 7/VI/1959, 15/VI/1959, 12/VII/1959, 21/VII/1959 (Bechyné and Bechyné 1960).

70. *Diphaulaca wagneri* Harold, 1875 (Fig. 5O)

Published records. AHUACHAPÁN, Apaneca, 14–17/VII/1959 (Bechyné and Bechyné 1960). CHALATENANGO: La Palma, 9/VII/1959 (Bechyné and Bechyné 1960). LA LIBERTAD: Comasagua, 1/VII/1959 and 3/VII/1959 (Bechyné and Bechyné 1960). SAN SALVADOR: Cerro San Jacinto, 17/IX/1959 (Bechyné and Bechyné 1960); El Boquerón, 10/VI/1959 and 20/VIII/1959 (Bechyné and Bechyné 1960).

Specimens examined. CHALATENANGO: La Palma, 9/VII/1959, Leg. J. Bechyné, Det. J. Bechyné, 11 spec..

71. *Disonycha brevilineata* Jacoby, 1884 (Fig. 5P)

Published records. CHALATENANGO: La Palma, 7/VII/1959 (Bechyné and Bechyné 1963). LA LIBERTAD: Hacienda Chanmico, 20/VI/1960 (Bechyné and Bechyné 1963); Comasagua, 3/VII/1959 (Bechyné and Bechyné 1963). LA PAZ: Volcan San Vicente, Finca La Paz, 1–10/VIII/1959 (Bechyné and Bechyné 1963). SAN SALVADOR: Capital, 30/VI/1959, 6–7/VII/1959, 28/VII/1959, 23/V/1960 (Bechyné and Bechyné 1963); Lago Ilopango, 24/VII/1959 (Bechyné and Bechyné 1963). SANTA ANA: Volcan San Diego, 23–24/VI/1959 (Bechyné and Bechyné 1963).

Specimens examined. LA LIBERTAD: Hacienda Chanmico, 20/VI/1960, Leg. J. Bechyné, Det. J. Bechyné, 10 spec. (RBINS); Santa Tecla, 28/IV/1960, Leg. J. Bechyné, Det. J. Bechyné, 25 spec. (RBINS); Tamanigue, 4/V/1960, Leg. J. Bechyné, Det. J. Bechyné, 5 spec. (RBINS). SAN SALVADOR: 23/V/1960, Leg. J. Bechyné, Det. J. Bechyné, 8 spec. (RBINS). SANTA ANA: Volcan San Diego, 23/VI/1959, Leg. J. Bechyné, Det. J. Bechyné, 13 spec. (RBINS).

Remarks. Berry (1959) also mentions this species as being present in El Salvador, but does not give specific records.

72. *Disonycha brunneofasciata* Jacoby, 1884

Published records. LA PAZ: Volcan San Vicente, Finca La Paz, 1–10/VIII/1959 (Bechyné and Bechyné 1963).

73. *Disonycha collata* (Fabricius, 1801)

Published records. SAN SALVADOR: Capital, 24/IV/1960 (Bechyné and Bechyné 1963).

74. *Disonycha dorsata* Harold, 1880

Published records. CUSCATLÁN: El Rosario (Berry 1957).

75. *Disonycha figurata* Jacoby, 1884 (Fig. 5Q)

Published records. SANTA ANA: Hacienda Los Planes, 1800 m, Metapan Mts., 24–25/VIII/1951 (Bechyné 1954).

Specimens examined. SAN SALVADOR: 19/VI/1960, Leg. J. Bechyné, Det. J. Bechyné, 39 spec. (RBINS).

Remarks. Berry (1959) also mentions this species as being present in El Salvador, but does not give specific records.

76. *Disonycha fumata labiata* Jacoby, 1901

Published records. AHUACHAPÁN: Apaneca, 14–17/VII/1959 (Bechyné and Bechyné 1963). SAN SALVADOR: El Boquerón, 10/VI/1959 and 20/VIII/1959 (Bechyné and Bechyné 1963).

77. *Disonycha glabrata* (Fabricius, 1781)

Published records. LA LIBERTAD: Los Chorros, 26/VI/1959, (Bechyné & Bechyné, 1963); Comasagua, 3/VII/1959, (Bechyné & Bechyné, 1963); Santa Tecla (Berry 1957). SANTA ANA: Volcan San Diego, 22–29/VI/1959 (Bechyné and Bechyné 1963). LA PAZ: Volcan San Vicente, Finca La Paz, 1–10/VIII/1959 (Bechyné and Bechyné 1963). SAN SALVADOR: Capital, 12/VI/1959, 15/VI/1959, 27/VI/1959, 30/VI/1959 (Bechyné and Bechyné 1963).

78. *Disonycha guatemalensis* Jacoby, 1884

Published records. CUSCATLÁN: Hacienda Colima, 22/VII/1959 (Bechyné and Bechyné 1963).

79. *Disonycha mexicana* Jacoby, 1884

Published records. CHALATENANGO: La Palma, 7/VII/1959, (Bechyné and Bechyné 1963). LA LIBERTAD: Comasagua, 3/VII/1959 (Bechyné and Bechyné 1963). MORAZÁN: Perquín, 22/IX/1959 (Bechyné and Bechyné 1963). SAN SALVADOR: Lago Ilopango, 24/VII/1959 (Bechyné and Bechyné 1963); Guazapa, 10/IX/1959 (Bechyné and Bechyné 1963).

80. *Disonycha militaris* Jacoby, 1884

Published records. LA PAZ: Volcan San Vicente, Finca La Paz, 1–10/VIII/1959 (Bechyné and Bechyné 1963). SAN SALVADOR, 13/VIII/1951 (Bechyné 1954).

Remarks. Berry (1959) also mentions this species as being present in El Salvador, but does not give specific records.

81. *Disonycha nigrita* Jacoby, 1884 (Fig. 5R)

Published records. CUSCATLÁN: Hacienda Colima, 22/VII/1959 (Bechyné and Bechyné 1963). LA LIBERTAD: Comasagua, 1/VII/1959 and 3/VII/1959 (Bechyné and Bechyné 1963); Hacienda Chanmico, 3/IX/1959 and, 20/VI/1960 (Bechyné and Bechyné 1963). SAN SALVADOR: Capital, 6/VII/1959 and 28/VII/1959 (Bechyné and Bechyné 1963); Lago Ilopango, 29/VII/1959 (Bechyné and Bechyné 1963). SANTA ANA: Volcan San Diego, 23/VI/1959 (Bechyné and Bechyné 1963).

Specimens examined. LA LIBERTAD: Hacienda Chanmico, 20/VI/1960, Leg. J. Bechyné, Det. J. Bechyné, 8 spec. (RBINS).

Remarks. Berry (1959) also mentions this species as being present in El Salvador, but does not give specific records.

82. *Disonycha ovata* Blake, 1931 (Fig. 5S)

Published records. AHUACHAPÁN: Los Ausoles, 26/I/1960 (Bechyné and Bechyné 1963). CHALATENANGO: La Palma, 7–8/VII/1959 (Bechyné and Bechyné 1963). LA LIBERTAD: Comasagua, 3/VII/1959 (Bechyné and Bechyné 1963); Santa Tecla (Berry 1957). SAN SALVADOR: Capital, 8/VI/1959, 19/VI/1959, 6/VII/1959, 20/VII/1959, 3/X/1959, 23/V/1960 (Bechyné and Bechyné 1963); El Boquerón, 10/VI/1959 (Bechyné and Bechyné 1963); Guazapa, 10/IX/1959 (Bechyné and Bechyné 1963).

Specimens examined. SAN SALVADOR: Cerro San Jacinto, 17/IX/1959, Leg. J. Bechyné, Det. J. Bechyné, 5 spec. (RBINS), 13/VI/1959, Leg. J. Bechyné, Det. J. Bechyné, 5 spec. (RBINS), 22/10/1959, Leg. J. Bechyné, Det. J. Bechyné, 4 spec. (RBINS), 23/V/1960, Leg. J. Bechyné, Det. J. Bechyné, 5 spec. (RBINS).

83. *Disonycha quinquelineata* (Latreille, 1881)

Published records. AHUACHAPÁN: Apaneca, 14–17/VII/1959 (Bechyné and Bechyné 1963). CUSCATLÁN: Volcan San Vicente, Finca El Carmen, 1300 m, 11–16/VI/1951 (Bechyné 1954). SAN SALVADOR: 23/VI/1951 (Bechyné 1954).

84. *Disonycha recticollis* (Jacoby, 1884) (Fig. 5T)

Published records. AHUACHAPÁN: Apaneca, 27/I/1959 and 14–17/VII/1959 (Bechyné and Bechyné 1963). SAN SALVADOR: El Boquerón, 10/VI/1959 (Bechyné and Bechyné 1963); San Salvador (Berry 1957).

Specimens examined. AHUACHAPÁN: Apaneca, 15/VII/1959, Leg. J. Bechyné, Det. J. Bechyné, 24 spec. (RBINS).

85. *Disonycha scriptipennis* (Jacoby, 1884)

Published records. SAN SALVADOR: Capital, 28/VII/1959 (Bechyné and Bechyné 1963).

86. *Disonycha steinheili* Harold, 1876

Published records. SAN SALVADOR: El Boquerón, 10/VI/1959 (Bechyné and Bechyné 1963).

87. *Disonycha trifasciata* Clark, 1865

Published records. LA LIBERTAD: Comasagua, 3/VII/1959 (Bechyné and Bechyné 1963). SAN SALVADOR: Capital, 12/VI/1959, 20/VII/1959, 28/VII/1959 (Bechyné and Bechyné 1963). Guazapa, 10/IX/1959 (Bechyné and Bechyné 1963). SANTA ANA: Volcan San Diego, 26/VI/1959 (Bechyné and Bechyné 1963).

88. *Disonycha vera* Bechyné & Bechyné, 1963

Published records. AHUACHAPÁN: Apaneca, 14–17/VII/1959 (Bechyné and Bechyné 1963). SAN SALVADOR: Capital, 8/VI/1959 (Bechyné and Bechyné 1963).

89. *Epitrix anahoria* Bechyné & Bechyné, 1960

Published records. CHALATENANGO: La Palma, 9/VII/1959 (Bechyné and Bechyné 1960). MORAZÁN: Perquín, 22/IX/1959 (Bechyné and Bechyné 1960). SANTA ANA: Volcan San Diego, 24/VI/1959 (Bechyné and Bechyné 1960).

90. *Epitrix angelina* Bechyné & Bechyné, 1960

Published records. AHUACHAPÁN: Apaneca, 14–17/VII/1959 (Bechyné and Bechyné 1960).

91. *Epitrix apanecana* Bechyné & Bechyné, 1960

Published records. AHUACHAPÁN: Apaneca, 14–17/VII/1959 (Bechyné and Bechyné 1960). LA LIBERTAD: Comasagua, 3/VII/1959 (Bechyné and Bechyné 1960). LA PAZ: Volcan San Vicente, Finca La Paz, 1–10/VII/1959 (Bechyné and Bechyné 1960). SAN SALVADOR: El Boquerón 10/VI/1959, (Bechyné and Bechyné 1960).

92. *Epitrix atripes silvicola* Bechyné & Bechyné, 1960

Published records. SANTA ANA: Trifinio, 11–15/X/1959 (Bechyné and Bechyné 1960).

93. *Epitrix auricoma* Bechyné & Bechyné, 1960

Published records. SANTA ANA: Trifinio, 13/X/1959 (Bechyné and Bechyné 1960).

94. *Epitrix dilaticornis* Jacoby, 1885

Published records. LA PAZ: Volcan San Vicente, Finca La Paz, 1–10/VIII/1959 (Bechyné and Bechyné 1960).

95. *Epitrix hirtula* Harold, 1875 (Fig. 5U)

Published records. SAN SALVADOR: El Boquerón, 9/V/1960 (Bechyné and Bechyné 1960). SANTA ANA: Trifinio, 11–15/X/1959 (Bechyné and Bechyné 1960).

Specimens examined. SAN SALVADOR: El Boquerón, 9/V/1960, Leg. J. Bechyné, Det. J. Bechyné, 53 spec., (RBINS).

96. *Epitrix integralis* Bechyné & Bechyné, 1960

Published records. AHUACHAPÁN: Apaneca, 14–17/VII/1959 (Bechyné and Bechyné 1960).

97. *Epitrix lacustris* Bechyné & Bechyné, 1960

Published records. AHUACHAPÁN: Apaneca, 14–17/VII/1959 (Bechyné and Bechyné 1960). LA PAZ: Volcan San Vicente, Finca La Paz, 1–10/VIII/1959 (Bechyné and Bechyné 1960). SAN SALVADOR: Capital, 20/VIII/1959 (Bechyné and Bechyné 1960); Cerro San Jacinto, 17/IX/1959 (Bechyné and Bechyné 1960).

98. *Epitrix nicolina* Bechyné & Bechyné, 1960

Published records. SAN SALVADOR: 13/VI/1959 and 20/VII/1959 (Bechyné and Bechyné 1960). SANTA ANA: Volcan San Diego, 23/VI/1959 (Bechyné and Bechyné 1960).

99. *Epitrix ninfa* Bechyné & Bechyné, 1960

Published records. AHUACHAPÁN: Apaneca (Laguna de las ninfas), 14–17/VII/1959 (Bechyné and Bechyné 1960). LA LIBERTAD: Hacienda Argentina, 20/VII/1959 (Bechyné and Bechyné 1960).

100. *Epitrix nycteroptera* Bechyné & Bechyné, 1960

Published records. SANTA ANA: Trifinio, 11/X/1959 (Bechyné and Bechyné 1960).

101. *Epitrix perquinensis* Bechyné & Bechyné, 1960

Published records. MORAZÁN: Perquín, 22/IX/1959 (Bechyné and Bechyné 1960).

102. *Epitrix thoracolysa* Bechyné & Bechyné, 1960

Published records. SANTA ANA: Volcan San Diego, 27/VI/1959 (Bechyné and Bechyné 1960).

103. *Epitrix triangularis* Bechyné & Bechyné, 1960

Published records. SANTA ANA: Trifinio, 11–14/X/1959 (Bechyné and Bechyné 1960).

104. *Epitrix vincentina* Bechyné & Bechyné, 1960

Published records. LA PAZ: Volcan San Vicente, Finca La Paz, 1–10/VIII/1959 (Bechyné and Bechyné 1960).

105. *Genaphthona transversicollis* (Jacoby, 1885) (Fig. 5V)

Published records. AHUACHAPÁN: Apaneca, 14–17/VIII/1959, (Bechyné & Bechyné, 1960). CHALATENANGO: La Palma, 7/VII/1959, (Bechyné & Bechyné, 1960). LA LIBERTAD: Hacienda Argentina, 17/VI/1959, (Bechyné & Bechyné, 1960). Hacienda Argentina, 30/IX/1959, (Bechyné & Bechyné, 1960). Comasagua, 1/VII/1959, (Bechyné & Bechyné, 1960). SAN SALVADOR: Capital, 9/VI/1959, 12/VI/1959, 19/VI/1959, 31/IX/1959 (Bechyné and Bechyné 1960). El Boquerón, 10/VI/1959 and 20/VIII/1959 (Bechyné and Bechyné 1960). SANTA ANA: Volcan San Diego, 29/VI/1959, (Bechyné & Bechyné, 1960). Trifinio, 10/X/1959 (Bechyné & Bechyné, 1960).

Specimens examined. LA LIBERTAD: Hacienda Argentina, 18/V/1960, Leg. J. Bechyné, Det. J. Bechyné, 54 spec. (RBINS).

106. *Genaphthona virkkii* Bechyné & Bechyné, 1960

Published records. AHUACHAPÁN: Apaneca, 14–17/VII/1959 (Bechyné and Bechyné 1960).

107. *Heikertingerella allopantha* Bechyné & Bechyné, 1960

Published records. LA PAZ: Volcan San Vicente, Finca La Paz, 1–10/VIII/1959 (Bechyné and Bechyné 1960). SAN SALVADOR: 12/VI/1959, 20/VIII/1959,

27/IX/1959, 30/IX/1959, (Bechyné and Bechyné 1960). SANTA ANA: Volcan San Diego, 23/VI/1959 (Bechyné and Bechyné 1960).

108. *Heikertingerella brachycaula* Bechyné & Bechyné, 1960

Published records. SANTA ANA: Trifinio, 11/X/1959 (Bechyné and Bechyné 1960).

109. *Heikertingerella brachygena* Bechyné & Bechyné, 1960

Published records. SANTA ANA: Trifinio, 14/X/1959 (Bechyné and Bechyné 1960).

110. *Heikertingerella hamagira* Bechyné & Bechyné, 1960

Published records. MORAZÁN: Perquín, 22/IX/1959 (Bechyné and Bechyné 1960).

111. *Heikertingerella irrahetai* Bechyné & Bechyné, 1960

Published records. SANTA ANA: Volcan San Diego, 29/VI/1959 (Bechyné and Bechyné 1960).

112. *Heikertingerella macrogena* Bechyné & Bechyné, 1960

Published records. AHUACHAPÁN: Apaneca, 14–17/??/1959 (Bechyné and Bechyné 1960). CHALATENANGO: La Palma, 7/VII/1959 (Bechyné and Bechyné 1960). MORAZÁN: Perquín, 22/IX/1959 (Bechyné and Bechyné 1960). LA PAZ: Volcan San Vicente, Finca La Paz, 1–10/VIII/1959 (Bechyné and Bechyné 1960). SAN SALVADOR: Capital, 15/VI/1959, 19/VI/1959, 20/VII/1959 (Bechyné and Bechyné 1960); Lago Ilopango, 24/VII/1959 (Bechyné and Bechyné 1960).

113. *Heikertingerella siliconia* Bechyné & Bechyné, 1960

Published records. AHUACHAPÁN: Apaneca, 14–17/VII/1959 (Bechyné and Bechyné 1960).

114. *Heikertingerella trifiniensis* Bechyné & Bechyné, 1960

Published records. SANTA ANA: Trifinio, 14/X/1959 (Bechyné and Bechyné 1960).

115. *Heikertingerella variabilis* (Jacoby, 1885)

Published records. LA PAZ: Volcan San Vicente, Finca La Paz, 1–10/VIII/1959 (Bechyné and Bechyné 1960). SAN SALVADOR: 6/VII/1959 (Bechyné and Bechyné 1960).

116. *Heikertingerella xanthocarya* Bechyné & Bechyné, 1960

Published records. MORAZÁN: Perquín, 22/IX/1959 (Bechyné and Bechyné 1960). SAN SALVADOR: Guazapa, 10/IX/1959 (Bechyné and Bechyné 1960). SANTA ANA: Trifinio, 14/X/1959 (Bechyné and Bechyné 1960).

117. *Longitarsus argopterus* Bechyné & Bechyné, 1960

Published records. LA PAZ: Volcan San Vicente, Finca La Paz, 1–10/VIII/1959 (Bechyné and Bechyné 1960).

118. *Longitarsus asteriscus* Bechyné & Bechyné, 1960

Published records. MORAZÁN: Perquín, 22/IX/1959 (Bechyné and Bechyné 1960). SAN SALVADOR: 20/VII/1959 (Bechyné and Bechyné 1960).

119. *Longitarsus berryi* Bechyné & Bechyné, 1960 (Fig. 5W)

Published records. SANTA ANA: Trifinio, 11–14/X/1959 and 8–9/III/1960 (Bechyné and Bechyné 1960).

Specimens examined. SANTA ANA: Trifinio, 8/III/1960, Leg. J. Bechyné, Det. J. Bechyné, Paratype, 52 spec. (RBINS).

120. *Longitarsus columbicus centroamericanus* Bechyné & Bechyné, 1960

Published records. CHALATENANGO: La Palma, 7/VII/1959 (Bechyné and Bechyné 1960). LA PAZ: Volcan San Vicente, Finca La Paz, 1–10/VIII/1959 (Bechyné and Bechyné 1960). MORAZÁN: Perquín, 22/IX/1959 (Bechyné and Bechyné 1960). SAN SALVADOR, 19/VI/1959, 20/VII/1959, 27/VII/1959 (Bechyné and Bechyné 1960).

121. *Longitarsus gerodontus* Bechyné & Bechyné, 1960

Published records. MORAZÁN: Perquín, 22/IX/1959 (Bechyné and Bechyné 1960).

122. *Longitarsus orphanus* Bechyné & Bechyné, 1960

Published records. MORAZÁN: Perquín, 25/VIII/1959 (Bechyné and Bechyné 1960). SANTA ANA: Trifinio, 11/X/1959 (Bechyné and Bechyné 1960).

123. *Longitarsus perichromus* Bechyné & Bechyné, 1960

Published records. LA PAZ: Volcan San Vicente, Finca La Paz, 1–10/VIII/1959 (Bechyné and Bechyné 1960). MORAZÁN: Perquín, 28/IX/1959 (Bechyné and Bechyné 1960).

124. *Longitarsus scurris* Bechyné & Bechyné, 1960

Published records. LA PAZ: Volcan San Vicente, Finca La Paz, 1–10/VIII/1959 (Bechyné and Bechyné 1960).

125. *Longitarsus seraphinus* Bechyné & Bechyné, 1960

Published records. AHUACHAPÁN: Apaneca, 14–17/VII/1959 (Bechyné and Bechyné 1960).

126. *Longitarsus somaticus* Bechyné & Bechyné, 1960

Published records. SAN SALVADOR: 15/VI/1959 and 20/VIII/1959 (Bechyné and Bechyné 1960).

127. *Longitarsus sparnus* Bechyné & Bechyné, 1960

Published records. AHUACHAPÁN: Apaneca, 14–17/VII/1959 (Bechyné and Bechyné 1960).

128. *Longitarsus varicornis* Suffrian, 1868 (Fig. 5X)

Published records. SANTA ANA: Volcan San Diego, 29/VI/1959 (Bechyné and Bechyné 1960).

Specimens examined. LA LIBERTAD: Hacienda San Diego, 28/IV/1960, Leg. J. Bechyné, Det. J. Bechyné, 61 spec. (RBINS).

129. *Luperaltica cayetunya* (Bechyné & Bechyné, 1960)

Published records. SANTA ANA: Volcan San Diego, 22–24/VI/1959 (Bechyné and Bechyné 1960); Trifinio, 10–14/X/1959 (Bechyné and Bechyné 1960).

130. *Luperaltica sylvia* (Bechyné & Bechyné, 1960)

Published records. CHALATENANGO: La Palma, 7/VII/1959 (Bechyné and Bechyné 1960). LA LIBERTAD: Hacienda Argentina, 20/VII/1959 (Bechyné and Bechyné 1960); Comasagua, 3/VII/1959 (Bechyné and Bechyné 1960). SAN SALVADOR: Capital, 8/VI/1959, 11/VI/1959, 13/VI/1959, 18–19/VI/1959, 6/VII/1959, 28/VII/1959 (Bechyné and Bechyné 1960); El Boquerón, 10/VI/1956 (Bechyné and Bechyné 1960). SANTA ANA: Volcan San Diego, 29/VI/1959 (Bechyné and Bechyné 1960).

131. *Luperaltica ustulata centralis* (Bechyné, 1955)

Published records. LA LIBERTAD: Comasagua, 3/VII/1959 (Bechyné and Bechyné 1960).

132. *Lupraea acanthonychina* Bechyné & Bechyné, 1960

Published records. CHALATENANGO: La Palma, 9/VII/1959 (Bechyné and Bechyné 1960). SANTA ANA: Volcan San Diego, 24/VI/1959 (Bechyné and Bechyné 1960).

133. *Lupraea fulvicollis* Jacoby, 1885 (Fig. 5Y)

Published records. CHALATENANGO: La Palma, 7/VII/1959 (Bechyné and Bechyné 1960). LA PAZ: Volcan San Vicente, Finca La Paz, 1–10/VIII/1959 (Bechyné and Bechyné 1960). SAN SALVADOR: Capital, 8/VI/1959, 11/VI/1959, 19/VI/1959, 21/VII/1959, 22/IX/1959, 1/I/1960 (Bechyné and Bechyné 1960); Hacienda Argentina, 20/VII/1959 (Bechyné and Bechyné 1960).

Specimens examined. SAN SALVADOR: 2/VII/1960, Leg. J. Bechyné, Det. J. Bechyné, 8 spec. (RBINS).

134. *Lupraea nigricollis* (Jacoby, 1891)

Published records. AHUACHAPÁN: Apaneca, 14–17/VII/1959 (Bechyné and Bechyné 1960).

135. *Lupraea portilloi* Bechyné & Bechyné, 1960 (Fig. 5Z)

Published records. SAN SALVADOR: 7/VI/1959, 8/VI/1959, 12/VI/1959, 13/VI/1959, 19/VI/1959, 21/VII/1959, 31/V/1960, 19/VI/1960 (Bechyné and Bechyné 1960).

Specimens examined. SAN SALVADOR: 31/V/1960, Leg. J. Bechyné, Det. J. Bechyné, Paratype, 34 spec. (RBINS).

136. *Lupraea santaneca* Bechyné & Bechyné, 1960

Published records. SANTA ANA: Volcan San Diego, 24/VI/1959 (Bechyné and Bechyné 1960).

137. *Lysathia comasagua* Bechyné & Bechyné, 1960

Published records. LA LIBERTAD: Comasagua, 3/VII/1959 (Bechyné and Bechyné 1960).

138. *Lysathia simplex* (Jacoby, 1891)

Published records. AHUACHAPÁN: Apaneca, 14–17/VII/1959 (Bechyné and Bechyné 1960). SAN SALVADOR: 24/VII/1959 and 20/VIII/1959 (Bechyné and Bechyné 1960). SANTA ANA: Volcan San Diego, 24/VI/1959 (Bechyné and Bechyné 1960).

139. *Lysathia volcanica* Bechyné & Bechyné, 1960

Published records. AHUACHAPÁN: Apaneca, 14–17/VII/1959 (Bechyné and Bechyné 1960). SANTA ANA: Volcan San Diego, 24/VI/1959 (Bechyné and Bechyné 1960).

140. *Macrohaltica salvadorensis* Bechyné & Bechyné, 1954 (Fig. 5a)

Published records. AHUACHAPÁN: Apaneca, 14–17/VII/1959 (Bechyné and Bechyné 1960), 9/VI/1926, Salman, K.A., USNM (Santisteban 2006); Laguna de la Ninfas, 1630 m, 18/VII/1951 (Bechyné 1954). LA LIBERTAD: Comasa-

gua, 1/VII/1959 (Bechyné and Bechyné 1960); Santa Tecla, II/X/1956, Berry, RA., USNM (Santisteban 2006); Valiano, 5500 ft, Berry, RA., USNM (Santisteban 2006). CHALATENANGO: La Palma, 7/VII/1959 (Bechyné and Bechyné 1960). SAN SALVADOR: 18/VII/1951 and 7/VIII/1950 (Bechyné 1954); El Boquerón, 10/VI/1959 (Bechyné and Bechyné 1960); San Salvador, NHMW (Santisteban 2006); Volcán San Salvador USNM (Santisteban 2006). SAN VICENTE: Santa Cruz Porrillo, 14/X/1956, Berry, RA., USNM (Santisteban 2006). SANTA ANA: Hacienda Los Planes, 1800 m, Metapan Mts., 24–25/VIII/1951 (Bechyné 1954). Hacienda Los Planes, 2000 m, 30/X/1950 (Bechyné 1954); Trifinio, 12/X/1959 (Bechyné and Bechyné 1960), 12/XII/1956 and 14/VIII/1959 Berry, RA., USNM (Santisteban 2006); Volcán Santa Ana, 30/VIII/1956, Berry, RA., USNM (Santisteban 2006); Laguna de las Ranas, 1750 m, 27/VI/1951 (Bechyné 1954); Volcan Santa Ana, W slope, 1600–1700 m, near Buenos Aires, 3/VIII/1951 (Bechyné 1954); Cerro Verde, 7/VIII/1964, Vega, J.C., Jr., TAMU (Santisteban 2006), 8/X/1956, Berry, RA, USNM (Santisteban 2006); 101.2 mi down from Cerro Verde summit, 20/VIII/1972, Hevel, GE & S, USNM (Santisteban 2006).

Specimens examined. AHUACHAPÁN: Apaneca, 15/VII/1959, Leg. J. Bechyné, Det. J. Bechyné, 20 spec. (RBINS).

141. *Monomacra dixira* Bechyné & Bechyné, 1963

Published records. AHUACHAPÁN: Apaneca, 14–17/VII/1959 (Bechyné and Bechyné 1963). SANTA ANA: Cerro Verde, 16/V/1960 (Bechyné and Bechyné 1963).

142. *Monomacra guazapa* Bechyné & Bechyné, 1963

Published records. SAN SALVADOR: Guazapa, 10/IX/1959 (Bechyné and Bechyné 1963).

143. *Monomacra variabilis* (Jacoby, 1884)

Published records. AHUACHAPÁN: Apaneca, 14–17/VII/1959 (Bechyné and Bechyné 1963). CHALATENANGO: La Palma, 7–9/VII/1959 (Bechyné and Bechyné 1963). LA LIBERTAD: Comasagua, 1/VII/1959 (Bechyné and Bechyné 1963). SAN SALVADOR: Capital, 8/VI/1959, 13/VI/1959, 19/VI/1959, 20/VII/1959, 1/I/1960 (Bechyné and Bechyné 1963).

144. *Monomacra violacea* (Jacoby, 1884)

Published records. SAN SALVADOR: Capital, 6/VII/1959 (Bechyné and Bechyné 1963).

145. *Neothona quatuordecima* Bechyné & Bechyné, 1960

Published records. CHALATENANGO: La Palma, 7/VII/1959 (Bechyné and Bechyné 1960).

146. *Neothona quindecima* Bechyné & Bechyné, 1960

Published records. LA PAZ: Volcan San Vicente, Finca La Paz, 1–10/VIII/1959 (Bechyné and Bechyné 1960). SAN SALVADOR: 8/VI/1959, 6/VII/1959, 12–13/VII/1959, 24/VII/1959, 3/X/1959 (Bechyné and Bechyné 1960). SANTA ANA: Volcan San Diego, 24/VI/1959 (Bechyné and Bechyné 1960).

147. *Neothona sedecima* Bechyné & Bechyné, 1960

Published records. MORAZÁN: Perquín, 22/IX/1959 (Bechyné and Bechyné 1960). LA PAZ: Volcan San Vicente, Finca La Paz, 1–10/VIII/1959 (Bechyné and Bechyné 1960).

148. *Neothona tredecima* Bechyné & Bechyné, 1960

Published records. CHALATENANGO: La Palma, 7/VII/1959 (Bechyné and Bechyné 1960).

149. *Omophoita affinis* (Jacoby, 1880)

Published records. AHUACHAPÁN: Apaneca, 14–17/VII/1959 (Bechyné and Bechyné 1960).

150. *Omophoita clerica* (Erichson, 1848)

Published records. Bechyné and Bechyné (1961) mention the occurrence of *O. clerica* in El Salvador, but do not give specific records.

151. *Omophoita punctulata* (Bechyné & Bechyné, 1963)

Published records. AHUACHAPÁN: Apaneca, 27/II/1960 (Bechyné and Bechyné 1963). CHALATENANGO: La Palma, 7–8/VII/1959 (Bechyné and Bechyné 1963). SAN SALVADOR: Capital, 1/I/1960 (Bechyné and Bechyné 1963); Guazapa, 10/IX/1959 (Bechyné and Bechyné 1963). SANTA ANA: Volcan San Diego, 22–29/VI/1959 (Bechyné and Bechyné 1963).

152. *Omophoita quadrinotata costaricensis* (Bechyné, 1955)

Published records. AHUACHAPÁN: Apaneca, 14–17/VII/1959 (Bechyné and Bechyné 1963). LA LIBERTAD: Comasagua, 1/VII/1959 (Bechyné and Bechyné 1963).

153. *Omophoita simulans* (Jacoby, 1892)

Published records. AHUACHAPÁN: Apaneca, 14–17/VII/1959 (Bechyné and Bechyné 1963). CHALATENANGO: La Palma, 8/VII/1959 (Bechyné and Bechyné 1963). LA PAZ: Volcan San Vicente, Finca La Paz, 1–10/VIII/1959 (Bechyné and Bechyné 1963). SAN SALVADOR: Capital, 20/VI/1959 (Bechyné and Bechyné 1963). SANTA ANA: Volcan San Diego, 22/VI/1959 (Bechyné and Bechyné 1963).

154. *Oreinodera aptera* Bechyné & Bechyné, 1963 (Fig. 5b)

Published records. SANTA ANA: Trifinio, 11–13/X/1959 and 6/III/1960 (Bechyné and Bechyné 1963).

Specimens examined. SANTA ANA: Trifinio, 6/III/1960, Leg. J. Bechyné, Det. J. Bechyné, Paratype, 20 spec. (RBINS).

155. *Phrynocephala australis* Gilbert, 2011

Published records. CUSCATLÁN: Rosario (El Rosario), 15/VI/1953, No. 444–273, Col. M.S.V. (Gilbert 2011).

156. *Phrynocephala laevicollis* Jacoby, 1884 (Fig. 5c)

Published records. SAN SALVADOR: El Boquerón, 25/V/1960 (Bechyné and Bechyné 1960). SANTA ANA: Volcan San Diego, 22–24/VI/1959 (Bechyné and Bechyné 1960).

Specimens examined. SAN SALVADOR: El Boquerón, 25/V/1960, Leg. J. Bechyné, Det. J. Bechyné, 52 spec. (RIBNS).

157. *Physimerus femoralis* Jacoby, 1886 (Fig. 5d)

Published records. SAN SALVADOR: Capital, 9/VI/1959, 12–13/VI/1959, 18/VI/1959, 6/VII/1959, 20/VII/1959 (Bechyné and Bechyné 1963); El Boquerón, 25/V/1960 (Bechyné and Bechyné 1963); Guazapa, 10/IX/1959 (Bechyné and Bechyné 1963).

Specimens examined. SAN SALVADOR: El Boquerón, 25/V/1960, Leg. J. Bechyné, Det. J. Bechyné, 28 spec. (RBINS), 23/V/1960, Leg. J. Bechyné, Det. J. Bechyné, 17 spec. (RBINS).

Remarks. The examined spec. from the RBINS are labeled as *Thrasyo goeus femoralis*, which has been synonymized with *Physimerus*; see Furth and Savini (1996).

158. *Platiprosopus acutangulus* (Chevrolat, 1834) (Fig. 5e)

Published records. LA LIBERTAD: Comasagua, 1/VII/1959 (Bechyné and Bechyné 1963); Santa Tecla (Berry 1957). LA UNIÓN: Cutuco, 2–4/VI/1959 (Bechyné and Bechyné 1963). SAN SALVADOR: Capital, 30/VI/1959, 28/VII/1959, 19/VI/1960 (Bechyné and Bechyné 1963); Lago Hopango, 24/VII/1959 (Bechyné and Bechyné 1963); Guazapa, 11/V/1960 (Bechyné and Bechyné 1963). SANTA ANA: Volcan San Diego, 22–29/VI/1959 (Bechyné and Bechyné 1963).

Specimens examined. LA UNIÓN: Cutuco, 4/VI/1959, Leg. J. Bechyné, Det. J. Bechyné, 15 spec. (RBINS). UNKNOWN PROVINCE: Cartagena, 19/V/1959, Leg. J. Bechyné, Det. J. Bechyné, 17 spec. (RBINS).

Remarks. The spec. in the RBINS are labeled as *Phyllotrupes acutangulus*, which has been synonymized with *Platiprosopus*; see Furth and Savini (1996).

159. *Plectotetra nigripes* Jacoby, 1884

Published records. SAN SALVADOR: El Boquerón, 10/VI/1959 (Bechyné and Bechyné 1963).

160. *Plectotetra surquia* Bechyné & Bechyné, 1963 (Fig. 5f)

Published records. AHUACHAPÁN: Apaneca, 14–17/VII/1959 (Bechyné and Bechyné 1963). CHALATENANGO: La Palma, 9/VII/1959 (Bechyné and Bechyné 1963). SANTA ANA: Cerro Verde, 16/V/1960 (Bechyné and Bechyné 1963).

Specimens examined. SANTA ANA: Cerro Verde, 16/V/1960, Leg. J. Bechyné, Det. J. Bechyné, Paratype, 58 spec. (RBINS).

161. *Podaltica harrietta* Bechyné & Bechyné, 1963

Published records. LA LIBERTAD: Hacienda Argentina, 17/VI/1959 (Bechyné and Bechyné 1963).

162. *Resistenciana cardiophora* Bechyné & Bechyné, 1960

Published records. SAN SALVADOR: El Boquerón, 10/VI/1959 (Bechyné and Bechyné 1960).

163. *Resistenciana ornata* (Jacoby, 1884)

Published records. CHALATENANGO: La Palma, 7/VII/1959 (Bechyné and Bechyné 1963). SAN SALVADOR: Capital, 6/VII/1959 (Bechyné and Bechyné 1963). SANTA ANA: Volcan San Diego, 23/VI/1959 (Bechyné and Bechyné 1963).

164. *Styrepitrix boqueronica* Bechyné & Bechyné, 1963

Published records. AHUACHAPÁN: Apaneca, 14–17/VIII/1959 (Bechyné and Bechyné 1963). SAN SALVADOR: El Boquerón, 10/VI/1959 (Bechyné and Bechyné 1963). SANTA ANA: Volcan San Diego, 29/VI/1959 (Bechyné and Bechyné 1963).

165. *Syphrea arevaloi* Bechyné & Bechyné, 1960

Published records. AHUACHAPÁN: Apaneca, 14–17/VIII/1959 (Bechyné and Bechyné 1960). SAN SALVADOR: 8/VI/1959, 20/VI/1959, 12/VII/1959, 24/VII/1959, 20/VIII/1959 (Bechyné and Bechyné 1960). SANTA ANA: Volcan San Diego, 29/VI/1959 (Bechyné and Bechyné 1960).

166. *Syphrea arhenia* Bechyné & Bechyné, 1960

Published records. LA PAZ: Volcan San Vicente, Finca La Paz, 1–10/VIII/1959 (Bechyné and Bechyné 1960).

167. *Syphrea balnearia* Bechyné & Bechyné, 1960 (Fig. 5g)

Published records. LA LIBERTAD: Los Chorros, 29/VI/1959 (Bechyné and Bechyné 1960); San Andrés, 15/VI/1959 (Bechyné and Bechyné 1960); Hacienda Chanmico, 20/VI/1960 (Bechyné and Bechyné 1960). LA PAZ: Volcan San Vicente, Finca La Paz, 1–10/VIII/1959 (Bechyné and Bechyné 1960). SAN SALVADOR: El Boquerón, 16/VI/1959 and 20/VIII/1959 (Bechyné and Bechyné 1960).

Specimens examined. LA LIBERTAD: Hacienda Chanmico, 20/VI/1960, Leg. J. Bechyné, Det. J. Bechyné, Paratype, 3 spec. (RBINS).

168. *Syphrea chrysoderma* Bechyné & Bechyné, 1960

Published records. SANTA ANA: Volcan San Diego, 22–29/VI/1959 (Bechyné and Bechyné 1960).

169. *Syphrea frigida* Bechyné & Bechyné, 1960

Published records. CHALATENANGO: La Palma, 7/VII/1959 (Bechyné and Bechyné 1960).

170. *Syphrea fulvitaris* Jacoby, 1891

Published records. CHALATENANGO: La Palma, 9/VII/1959 (Bechyné and Bechyné 1960). LA PAZ: Volcan San Vicente, Finca La Paz, 1–10/VIII/1959 (Bechyné and Bechyné 1960). SAN SALVADOR: 11/VI/1959, 13/VI/1959, 19/VI/1959, 30/VI/1959, 6/VII/1959, 20/VII/1959 (Bechyné and Bechyné 1960). LA LIBERTAD: Comasagua, 1/VII/1959 and 3/VII/1959 (Bechyné and Bechyné 1960).

171. *Syphrea idiolepis* Bechyné & Bechyné, 1960

Published records. LA LIBERTAD: Comasagua, 1/VII/1959 (Bechyné and Bechyné 1960). MORAZÁN: Perquín, 22/IX/1959 (Bechyné and Bechyné 1960).

172. *Syphrea palaciosi* Bechyné & Bechyné, 1960

Published records. CHALATENANGO: La Palma, 9/VII/1959 (Bechyné and Bechyné 1960).

173. *Syphrea palomita* Bechyné & Bechyné, 1960

Published records. SANTA ANA: Volcan San Diego, 23/VI/1959 (Bechyné and Bechyné 1960).

174. *Syphrea pretiosa* Baly, 1876 (Fig. 5h)

Published records. CHALATENANGO: La Palma, 9/VII/1959 (Bechyné and Bechyné 1960). LA PAZ: Volcan San Vicente, Finca La Paz, 1–10/VIII/1959 (Bechyné and Bechyné 1960). SANTA ANA: Volcan San Diego, 24/VI/1959 (Bechyné and Bechyné 1960).

Specimens examined. CHALATENANGO: La Palma, 9/VII/1959, Leg. J. Bechyné, Det. J. Bechyné, 9 spec. (RBINS).

175. *Syphrea quintanillai* Bechyné & Bechyné, 1960 (Fig. 5i)

Published records. LA LIBERTAD: Los Chorros, 29/VI/1959 (Bechyné and Bechyné 1960); Hacienda Chanmico, 20/VI/1960 (Bechyné and Bechyné 1960). SAN SALVADOR: Lago Ilopango, 24/VII/1959 (Bechyné and Bechyné 1960); Capital, 30/VI/1959 (Bechyné and Bechyné 1960).

Specimens examined. LA LIBERTAD: Hacienda Chanmico, 20/VI/1960, Leg. J. Bechyné, Det. J. Bechyné, Paratype, 15 spec. (RBINS).

176. *Syphrea rufobadia* Bechyné & Bechyné, 1960

Published records. SAN SALVADOR: Capital, 13/VI/1959 and 30/VI/1959 (Bechyné and Bechyné 1960); Lago Ilopango, 24/VII/1959 (Bechyné and Bechyné 1960).

177. *Syphrea suntia* Bechyné & Bechyné, 1960

Published records. CHALATENANGO: La Palma, 7/VII/1959 (Bechyné and Bechyné 1960).

178. *Syphrea teapensis* Jacoby, 1891

Published records. SAN SALVADOR: Capital, 19–20/VI/1959 (Bechyné and Bechyné 1960); Guazapa, 10/IX/1959 (Bechyné and Bechyné 1960). SANTA ANA: Volcan San Diego, 23–29/VI/1959 (Bechyné and Bechyné 1960).

179. *Systema candella* Bechyné & Bechyné, 1963

Published records. LA PAZ: Volcan San Vicente, Finca La Paz, 1–10/VIII/1959 (Bechyné and Bechyné 1963).

180. *Systema costifera* Bechyné & Bechyné, 1963

Published records. CHALATENANGO: La Palma, 7/VII/1959 (Bechyné and Bechyné 1963). SAN SALVADOR: Capital, 12/VI/1959 (Bechyné and Bechyné 1963).

181. *Systema elongatula* Csiki, 1939

Published records. AHUACHAPÁN: Apaneca, 14–17/VII/1959 (Bechyné and Bechyné 1963). CHALATENANGO: La Palma, 7/VII/1959 (Bechyné and Bechyné 1963); La Palma, 9/VII/1959 (Bechyné and Bechyné 1963). LA LIBERTAD: Santa Tecla, 28/IX/1959 (Bechyné and Bechyné 1963). SAN SALVADOR: Capital, 20/VIII/1959 (Bechyné and Bechyné 1963). El Boquerón, 10/VI/1959 (Bechyné and Bechyné 1960). SANTA ANA: Trifinio, 17/X/1959 (Bechyné and Bechyné 1963).

182. *Systema guiija* Bechyné & Bechyné, 1963

Published records. CHALATENANGO: La Palma, 9/VII/1959 (Bechyné and Bechyné 1963). CUSCATLÁN: Hacienda Colima, 22/VII/1959 (Bechyné and Bechyné 1963). MORAZÁN: Perquín, 27/IX/1959 (Bechyné and Bechyné 1963).

SAN SALVADOR: Cerro San Jacinto, 17/IX/1959 (Bechyné and Bechyné 1963).

SANTA ANA: Volcan San Diego, 23–29/VI/1959 (Bechyné and Bechyné 1963).

183. *Systema lepontina* Bechyné & Bechyné, 1963

Published records. CHALATENANGO: La Palma, 8/VII/1959 (Bechyné and Bechyné 1963). LA LIBERTAD: Comasagua, 3/VII/1959 (Bechyné and Bechyné 1963); Los Chorros, 29/VI/1959 (Bechyné and Bechyné 1963). SAN SALVADOR: Capital, 7–8/VI/1959, 18–19/VI/1959, 30/VI/1959, 3/V/1960, 15/V/1960, 18/V/1960 (Bechyné and Bechyné 1963).

184. *Systema melanosterna* Bechyné & Bechyné, 1963

Published records. CHALATENANGO: La Palma, 7/VII/1959 and 9/VII/1959 (Bechyné and Bechyné 1963). SAN SALVADOR: Cerro San Jacinto, 17/IX/1959 (Bechyné and Bechyné 1963).

185. *Systema pectoralis* Clark, 1865

Published records. CHALATENANGO: La Palma, 7/VII/1959 (Bechyné and Bechyné 1963).

186. *Systema sulcatula* Bechyné & Bechyné, 1963

Published records. LA LIBERTAD: Comasagua, 1/VII/1959 (Bechyné and Bechyné 1963). SAN SALVADOR: El Boquerón, 10/VI/1959 (Bechyné and Bechyné 1963).

187. *Systema thoracica* Jacoby, 1884

Published records. AHUACHAPÁN: Apaneca, 14–17/VII/1959 (Bechyné and Bechyné 1963); Los Ausoles, 26/I/1960 (Bechyné and Bechyné 1963). LA PAZ: Volcan San Vicente, Finca La Paz, 1–10/VIII/1959 (Bechyné and Bechyné 1963). MORAZÁN: Perquín, 22/IX/1959 (Bechyné and Bechyné 1963). SANTA ANA: Volcan San Diego, 24/VI/1959 (Bechyné and Bechyné 1963).

188. *Systema variabilis* Jacoby, 1884 (Fig. 5j)

Published records. CHALATENANGO: La Palma, 7–8/VII/1959 (Bechyné and Bechyné 1963). SAN SALVADOR: Capital, 23/V/1960 (Bechyné and Bechyné 1963); El Boquerón, 10/VI/1959 (Bechyné and Bechyné 1963). SANTA ANA: Volcan San Diego, 27/VI/1959 (Bechyné and Bechyné 1963).

Specimens examined. SAN SALVADOR: 23/V/1960, Leg. J. Bechyné, Det. J. Bechyné, 30 spec. (RBINS).

Remarks. Berry (1959) also mentions this species as being present in El Salvador, but does not give specific records.

189. *Temnocrepis trifiniensis* Bechyné & Bechyné, 1963

Published records. SANTA ANA: Trifinio, 11–13/V/1959 (Bechyné and Bechyné 1963).

190. *Trichaltica variabilis* Jacoby, 1885

Published records. AHUACHAPÁN: Apaneca, 14–17/VII/1959 (Bechyné and Bechyné 1963). SAN SALVADOR: Capital, 19/VI/1960 (Bechyné and Bechyné 1963).

191. *Trifiniocola freundi* Bechyné & Bechyné, 1963

Published records. SANTA ANA: Trifinio, 10–14/X/1959 and 8–9/III/1960 (Bechyné and Bechyné 1963).

192. *Walterianella biarcuata* (Chevrolat, 1834)

Published records. MORAZÁN: Perquín, 22/IX/1959 (Bechyné and Bechyné 1963).

193. *Walterianella exocosta* Bechyné & Bechyné, 1963

Published records. SAN SALVADOR: Capital, 1/I/1960, 24/IV/1960, 15/V/1960, 23/V/1960 (Bechyné and Bechyné 1963); Guazapa, 10/IX/1959 (Bechyné and Bechyné 1963).

194. *Walterianella hypocrita* (Jacoby, 1886)

Published records. CUSCATLÁN: El Rosario (Berry 1957).

195. *Walterianella inscripta* (Jacoby, 1886)

Remarks. Berry (1959) mentions this species as being present in El Salvador, but does not give specific records.

196. *Walterianella sublineata* (Jacoby, 1886)

Published records. AHUACHAPÁN: Apaneca, 14–17/VII/1959 (Bechyné and Bechyné 1963). SAN SALVADOR: El Boquerón, 10/VI/1959 (Bechyné and Bechyné 1963). USULUTÁN: Alegría, 27/II/1960 (Bechyné and Bechyné 1963).

197. *Walterianella tenuicincta* (Jacoby, 1886)

Published records. AHUACHAPÁN: Apaneca, 14–17/VII/1959, (Bechyné and Bechyné 1963). SAN SALVADOR: Capital, 8/IX/1959 (Bechyné and Bechyné 1963).

198. *Walterianella venustula* (Schaufuss, 1874) (Fig. 4k)

Published records. LA LIBERTAD: Hacienda Argentina, 15/VI/1959 and 17/VI/1959 (Bechyné and Bechyné 1963). LA PAZ: Volcan San Vicente, Finca La Paz, 1–10/VIII/1959 (Bechyné and Bechyné 1963). SAN SALVADOR: Capital, 11/VI/1959, 19/VI/1959, 30/VI/1959, 28/VII/1959, 24/IV/1960, 29/IV/1960 (Bechyné and Bechyné 1963); Lago Ilopango, 24/VII/1959 (Bechyné and Bechyné 1963); Guazapa, 10/IX/1959 (Bechyné and Bechyné 1963). SANTA ANA: Trifinio, 14/X/1959 (Bechyné and Bechyné 1963).

Specimens examined. SAN SALVADOR: 24/IV/1960, Leg. J. Bechyné, Det. J. Bechyné, 63 spec. (RBINS).

Subfamily Galerucinae excl. Alticini**1. *Acalymma semicoerulea* (Jacoby, 1887) new record (Fig. 6A)**

Specimens examined. SAN SALVADOR: Cerro San Jacinto, 17/IX/1959, Leg. J. Bechyné, Det. J. Bechyné, 11 spec. (RBINS), 2/VII/1960, Leg. J. Bechyné, Det. J. Bechyné, 10 spec. (RBINS).

2. *Acalymma trivittata* (Mannerheim, 1843)

Published records. LA LIBERTAD: Santa Tecla (Berry 1957).

3. *Amphelasma nigrolineatum* (Jacoby, 1878) new record (Fig. 6B)

Specimens examined. SAN SALVADOR: 23/V/1960, Leg. J. Bechyné, Det. J. Bechyné, 7 spec. (RBINS). SANTA ANA: Trifinio, 6/III/1960, Leg. J. Bechyné, Det. J. Bechyné, 12 spec. (RBINS).

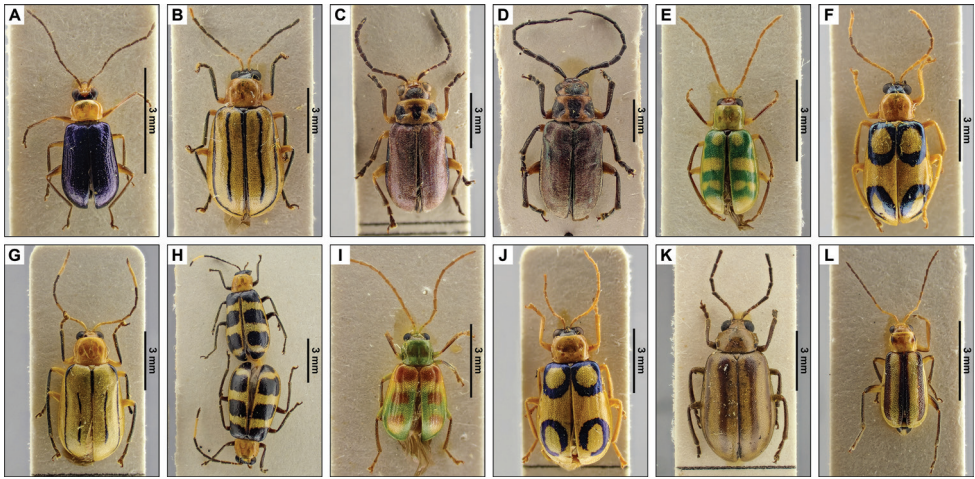


Figure 6. Dorsal pictures of the species of Galerucinae excluding Alticini from El Salvador currently present in the collections of the RBINS. **A** *Acalymma semicaerulea* **B** *Amphelasma nigrolineatum* **C** *Coraia clarki* **D** *C. maculicollis* **E** *Diabrotica balteata* **F** *D. circulata* **G** *D. curvilineata* **H** *D. pulchra* **I** *D. viridula* **J** *Neobrotica ornata* **K** *Pyesia detrita laevicollis*. High resolution images can be found at <http://collections.naturalsciences.be/ssh-entomology>.

4. *Cerotoma atrofasciata* Jacoby, 1879

Remarks. Berry (1959) mentions this species as being present in El Salvador, but does not give specific records.

5. *Cerotoma ruficornis* (Olivier, 1791)

Published records. LA UNIÓN: La Unión (Jacoby 1880 – 1892).

6. *Coraia clarki* Jacoby, 1886 new record (Fig. 6C)

Specimens examined. LA LIBERTAD: Hacienda Argentina, 18/V/1960, Leg. J. Bechyné, Det. J. Bechyné, 93 spec. (RBINS).

7. *Coraia maculicollis* Clark, 1865 new record (Fig. 6D)

Specimens examined. LA LIBERTAD: Hacienda Argentina, 18/V/1960, Leg. J. Bechyné, Det. J. Bechyné, 4 spec., (RBINS).

8. *Diabrotica amecameca* Krysan & Smith, 1987

Remarks. Derunkov et al. (2013) list El Salvador under known distribution of *D. amecameca*, but do not give specific localities.

9. *Diabrotica balteata* LeConte, 1865 (Fig. 6E)

Published records. LA LIBERTAD: Santa Tecla (Berry 1957); San Andrés (Berry 1957). SAN SALVADOR: Aeropuerto de Ilopango (Berry 1957). SAN VICENTE: Santa Cruz Porrillo (Berry 1957).

Specimens examined. LA LIBERTAD: Zapotitan, 22/I/1960, Leg. J. Bechyné, Det. J. Bechyné, 11 spec. (RBINS). SAN SALVADOR: 1/I/1960, Leg. J. Bechyné, Det. J. Bechyné, 4 spec. (RBINS). UNKNOWN PROVINCE: Asino, Lago Ilopango, 24/VII/1959, Leg. J. Bechyné, Det. J. Bechyné, 8 spec. (RBINS).

10. *Diabrotica circulata* Harold, 1875 new record (Fig. 6F)

Specimens examined. SAN SALVADOR: 23/V/1960, Leg. J. Bechyné, Det. J. Bechyné, 8 spec. (RBINS). SANTA ANA: Trifinio, 6/III/1960, Leg. J. Bechyné, Det. J. Bechyné, 13 spec. (RBINS).

11. *Diabrotica curvilineata* Jacoby, 1887 new record (Fig. 6G)

Specimens examined. SAN SALVADOR: 23/V/1960, Leg. J. Bechyné, Det. J. Bechyné, 10 spec. (RBINS).

12. *Diabrotica litterata* (Sahlberg, 1823)

Published records. CUSCATLÁN: El Rosario (Berry 1957).

13. *Diabrotica porracea* (Harold, 1875)

Remarks. Derunkov et al. (2013) list El Salvador under known distribution of *D. porracea*, but do not give specific localities. Berry (1959) also mentions this species as being present in El Salvador, but does not give specific records.

14. *Diabrotica pulchra* (Sahlberg, 1823) (Fig. 6H)

Published records. CUSCATLÁN: El Rosario (Berry 1957).

Specimens examined. USULUTÁN: Alegría, 22/II/1960, Leg. J. Bechyné, Det. J. Bechyné, 26 spec. (RBINS).

Remarks. Derunkov et al. (2013) list El Salvador under known distribution of *D. pulchra*, but do not give specific localities. The record listed in Berry and Salazar (1957) is listed as *D. albosignata* which is a synonym of *D. pulchra*.

15. *Diabrotica salvadorensis* Derunkov et al., 2015

Published records. CUSCATLÁN: Rosario Cuscatlan, No 444–506B, 17/III/1955, Col. M.S.V. (Derunkov et al. 2015); Rosario Cuscatlan, No 444–218A, 20/XI/1953, Col. M.S. (Derunkov et al. 2015). LA UNIÓN: No 444–766A, 14/V/1954, Col. C.A.B. (Derunkov et al. 2015). SAN SALVADOR: No 714.210, 14/III/1957, Col. PAB, det. R.F. Smith 1963, *Diabrotica* n. sp. near *D. pulchra* (Sahlberg) (Derunkov et al. 2015). SANTA ANA: 6.0 km W. Hwy CA1 above Lago de Coatepeque, 853 mts., 1/VI/1973 (Derunkov et al. 2015). USULUTÁN: 4 miN Santiago de Maria, 29/VIII/1972, G.F. and S. Hevel. (Derunkov et al. 2015).

16. *Diabrotica spec.iosa spec.iosa* (Germar, 1824)

Remarks. Derunkov et al. (2013) list El Salvador under known distribution of *D. pulchra*, but do not give specific localities.

17. *Diabrotica viridula* (Fabricius, 1801) (Fig. 6I)

Published records. USULUTÁN: Berlín (Bechyné and Bechyné 1962).

Specimens examined. SAN SALVADOR: Cerro San Jacinto, 17/IX/1959, Leg. J. Bechyné, Det. J. Bechyné, 5 spec. (RBINS). USULUTÁN: Alegría, 22/II/1960, Leg. J. Bechyné, Det. J. Bechyné, 23 spec. (RBINS).

Remarks. Derunkov et al. (2013) also lists El Salvador under known distribution of *D. viridula*, but does not give specific localities. Bechyné and Bechyné (1969a) state that *D. viridula* is common in San Salvador. Berry (1959) also mentions this species as being present in El Salvador, but does not give specific records as well.

18. *Exora detrita* (Fabricius, 1801)
Published records. CUSCATLÁN: Finca El Carmen, 1300 m, Volcan San Vicente, 11–16/VI/1951 (Bechyné 1954).
19. *Exora encaustica* Harold, 1875
Published records. LA LIBERTAD: Santa Tecla (Berry 1957).
Remarks. Bechyné and Bechyné (1962) list El Salvador under species distribution, but do not give specific localities.
20. *Exora obsoleta* (Fabricius, 1801)
Published records. SAN SALVADOR: 22/VII/1951 (Bechyné 1954).
Remarks. Bechyné and Bechyné (1962) also list El Salvador under species distribution, but do not give specific localities. This thus might be a reference to the locality listed above.
21. *Gynandrobrotica nigrofasciata* (Jacoby, 1878)
Published records. CUSCATLÁN: El Rosario (Berry 1957). LA LIBERTAD: Los Chorros (Berry 1957).
22. *Gynandrobrotica variabilis* (Jacoby, 1887)
Published records. CUSCATLÁN: El Rosario (Berry 1957).
23. *Monocesta ducalis* Clark, 1865
Published records. SAN SALVADOR: 8/VII/1951 (Bechyné 1954).
Remarks. Berry (1959) also mentions this species as being present in El Salvador, but does not give specific records.
24. *Monocesta jansonii* Jacoby, 1886
Published records. LA LIBERTAD: Santa Tecla (Berry 1957).
25. *Monolepta bipartita* Jacoby, 1888
Published records. CUSCATLÁN: El Rosario (Berry 1957).
26. *Neobrotica ornata* Jacoby, 1887 new record (Fig. 6J)
Specimens examined. SAN SALVADOR: 23/V/1960, Leg. J. Bechyné, Det. J. Bechyné, 5 spec. (RBINS).
27. *Pyesia detrita laevicollis* (Jacoby, 1887) (Fig. 6K)
Specimens examined. SAN SALVADOR: 1/II/1960, Leg. J. Bechyné, Det. J. Bechyné, 1 spec. (RBINS), 1/II/1960, Leg. J. Bechyné, Det. J. Bechyné, 25 spec. (RBINS).
Remarks. Bechyné and Bechyné (1962) list El Salvador under species distribution, but do not give specific localities.
28. *Trichobrotica sexplagiata* (Jacoby, 1878) new record
Specimens examined. SAN SALVADOR: 27/II/1959, Leg. J. Bechyné, Det. J. Bechyné, 20 spec. (RBINS).

Subfamily Lamprosomatinae

1. *Lamprosoma splendidum* Lacordaire, 1848

Remarks. Berry (1959) mentions this species as being present in El Salvador, but does not give specific records.

Discussion

The digitization of the Bechyné collection in the RBINS revealed that there were a total of 2797 individual specimens sorted into 89 species. Among these were ten apparent *nomina nuda* which could not be found in any publication from J. Bechyné: *Antitypona* sp. (Manuscript species – Eumolpinae), *Brachypnoea* sp. 1 (Manuscript species – Eumolpinae), *Brachypnoea* sp. 2 (Manuscript species – Eumolpinae), *Hylax* sp. (Manuscript species – Eumolpinae), *Percolaspis* sp. 1 (Manuscript species – Eumolpinae), *Percolaspis* sp. 2 (Manuscript species – Eumolpinae), *Phanaeta* sp. (Manuscript species – Eumolpinae), *Chaetocnema* sp. (Manuscript species – Galerucinae, Alticini), *Phyllotreta* sp. (Manuscript species – Galerucinae, Alticini) and *Walterianella* sp. (Manuscript species – Galerucinae, Alticini). These are species which Bechyné either forgot to formerly describe, did not have time to describe, or the validity of which he questioned. Regarding the former list, the authors believe that *Walterianella* sp. (Manuscript species) could just be a variation of *W. venustula* (Schaufuss) which it closely resembles, but this should be confirmed by comparison with the type material and especially the structure of the genital structures. These and all of the other “paratypes” of the *nomina nuda* should be examined and revised in the future by experts.

The study of relevant literature led to a checklist of 385 species known from El Salvador. A total of 43 species from these 309 were also present in the collections in the RBINS. Material from the Bechyné collection added a further 33 species (excluding the ten *nomina nuda*) to the literature-based checklist of chrysomelids. This leads to a preliminary checklist of a total of 420 species of Chrysomelidae currently known for El Salvador (see table 1 for a full overview). Incorporated were also records from Berry and Salazar (1957) and Berry (1959), references which were frequently overlooked in the past.

Surprisingly few records of the subfamilies Criocerinae, Lamprosomatinae, and Cryptocephalinae could be found, despite their high prevalence in Central America. This is most likely due to the fact that most chrysomelid research in El Salvador has been done by J. and B. Bechyné, who focused mostly on Eumolpinae and Galerucinae including Alticini (of which respectively 16, 9, and 2 species could be newly added to the El Salvador checklist by Bechyné’s collection in the RBINS). The latter are relatively well represented in comparison with the currently known number of species from neighbouring countries (see Furth and Savini (1996)), mainly because of the extensive work of the Bechynés.

We noted a strong bias towards collection efforts in the departments San Salvador (182 species), La Libertad (105 species) and Santa Ana (114 species), and to a lesser extent in the districts Ahuachapán (54 species), La Paz (50 species) and Chalatenango (46 species). No records from San Miguel or Cabañas could be found. Future surveys in the country should thus also be focussed on the two latter departments.

Conclusions

Our study reveals a preliminary total of 420 species of Chrysomelidae known to El Salvador. However, this number should be approached with caution, since the taxonomy of some subfamilies is not yet fully clear (e.g., Eumolpinae), some subfamilies seem to lack sampling effort in the country (e.g., Cryptocephalinae, Criocerinae and Lamprosomatinae), and in general there has been little study on the fauna of El Salvador, possibly due to its political instability and safety issues for field research (Bourgeois 2001). Nonetheless, we believe that this checklist, although almost certainly incomplete, will serve as a baseline for further study in the area.

Acknowledgements

We greatly acknowledge Pol Limbourg for logistic support, and we thank the Scientific Service Heritage (Patrick Semal) of the Royal Belgian Institute for Natural Sciences, Brussels for the support hosting the pictures online through the Virtual Collections platform. We would also like to thank Florence Trus for providing the full drawer pictures which were added to the online database. Anouk D'Hont is thanked for her help in constructing the data tables and for final adjustments. Shawn Clark (BYU), Jesús Gómez-Zurita (CSIC), and David Furth (SMNH) are greatly acknowledged for a first stage review of the paper, for adding species records and for sharing their expertise. Jan Mertens is sincerely thanked for delivering the species plates for the manuscript. We would like to thank Alanna Rebelo for a grammar and spelling check of this manuscript. We also acknowledge the two reviewers. This work was partly financed by the Ministry of Culture of the Czech Republic (DKRVO 2019–2023/5.1.a, National Museum, 00023272).

References

- Baly JS, Champion GC (1885–1894) *Insecta. Coleoptera. Phytophaga (part). Cassididae & Hispididae*. In: Godman FD, Salvin O (Eds) *Biologia Centrali Americana*, Volume VI, Part 2. Taylor & Francis, London, 249 pp. [+ 13 pls]
- Bechyné J (1954) *Chrysomeloidea aus El Salvador (Ins. Col. Phytophaga)*. *Senckenbergiana* 34: 293–296.
- Bechyné J (1955) *Reise des Herrn G. Frey in Südamerika: Eumolpidae (Col. Phytophaga)*. *Entomologische Arbeiten aus der Museum G. Frey* 6: 569–657.
- Bechyné J, Bechyné B (1960) *Beiträge zur Kenntnis der Salvadorensischen Chrysomeloidea (Col. Phytophaga)*. *Pesquisas, Seria Zoologia* 6: 5–73.
- Bechyné J, Bechyné B (1962) *Liste der bisher in Rio Grande do Sul gefundenen Galeruciden*. *Pesquisas, Seria Zoologia* 15: 5–68.

- Bechyné J, Bechyné B (1963) Beitrag zur Kenntnis der Salvadorenischen Chrysomeloidea (Col. Phytophaga) 1. Fortsetzung. *Iheringia, Seria Zoologia* 31: 1–79.
- Bechyné J, Bechyné B (1965a) Notes sur les Chrysomelidae s. str. de Venezuela et des pays limitrophes (Col. Phytophaga). *Revista de la Facultad de Agronomía de Maracay* 3: 44–110. <https://doi.org/10.3406/linly.1958.7945>
- Bechyné J, Bechyné B (1965b) Notes sur les Chrysomeloidea captures par le Dr. W. A. Egler au Rio Jari (Bresil: Para/Amapa) en 1961 (Col. Phytophaga). *Boletim do Museu Paraense Emilio Goeldi* 53: 1–44. <https://doi.org/10.1590/s1981-81222009000100018>
- Bechyné J, Bechyné B (1969a) Die Galerucidengattungen in Südbrasilien. *Iheringia, Zoologia* 36: 3–110.
- Bechyné J, Bechyné B (1969b) Notas sobre Phytophaga americanos (Coleoptera). *Revista de la Facultad de Agronomía de Maracay* 5: 5–64.
- Berry PA, Salazar M (1957) Lista de Insectos Clasificados de El Salvador. *Boletín Técnico de Ministerio de Agricultura y Ganadería (El Salvador)* 21: 5–134.
- Berry PA (1959) Segunda Lista de Insectos Clasificados de El Salvador. *Boletín Técnico de Ministerio de Agricultura y Ganadería (El Salvador)* 25: 1–89.
- Blackwelder RE (1946) Checklist of the coleopterous insects of Mexico, Central America, the West Indies, and South America. Part 4. *Bulletin of the United States National Museum* 185: 551–925. <https://doi.org/10.5479/si.03629236.185.4>
- Boheman CH (1850) *Monographia Cassidarum. Tomus Primus. Officina Norstedtiana, Holmiae*, 452 pp. [+ 4 pls] <https://doi.org/10.5962/bhl.title.8973>
- Boheman CH (1854) *Monographia Cassidarum. Tomus Secundus. Officina Norstedtiana, Holmiae*, 506 pp. [+ 2 pls]
- Boheman CH (1855) *Monographia Cassidarum. Tomus Tertius. Officina Norstedtiana, Holmiae*, 543 pp. [+ 1 pl]
- Boheman CH (1862) *Monographia Cassidarum. Tomus Quartus. (Supplementum). Officina Norstedtiana, Holmiae*, 504 pp.
- Bouchard P, Bousquet Y, Davies AE, Alonso-Zarazaga MA, Lawrence JF, Lyal CH, Newton AF, Reid CA, Schmitt M, Słipiński SA, Smith AB (2011) Family-group names in Coleoptera (Insecta). *ZooKeys* 88: 1–972. <https://doi.org/10.3897/zookeys.88.807>
- Bourgeois P (2001) The power of violence in war and peace: Post-Cold War lessons from El Salvador. *Ethnography* 2: 5–34. <https://doi.org/10.1177/14661380122230803>
- Bridwell JC (1929) A preliminary generic arrangement of the palm bruchids and allies with description of new species. *Proceedings of the Entomological Society of Washington* 31(8): 141–160.
- Clavareau H (1913) Chrysomelidae: 1. Sagrinae, 2. Donaciinae, 3. Orsodacninae, 4. Criocerinae. In: Junk W, Schenkling S (Ed.) *Coleopterorum Catalogus, Pars 51*. Berlin, 103 pp.
- Clavareau H (1913) Chrysomelidae: 5. Megascelinae, 6. Megalopodinae, 7. Clytrinae, 8. Cryptocephalinae, 9. Chlamydinae, 10. Lamprosominae. In: Junk W, Schenkling S (Ed.) *Coleopterorum Catalogus, Pars 53*. Berlin, 278 pp.
- Clavareau H (1914) Chrysomelidae: 11. Eumolpinae. In: Junk W, Schenkling S (Ed.) *Coleopterorum Catalogus, Pars 59*. Berlin, 215 pp.

- Derunkov A, Konstantinov A, Tishechkin A, Hartje L, Redford AJ (2013) Diabrotica ID: Identification of *Diabrotica* species (Coleoptera: Chrysomelidae) from North and Central America. <https://doi.org/10.12976/jib/2015.3.2> [Accessed 03/01/2018]
- Drew LW (2011) Are We Losing the Science of Taxonomy? As need grows, numbers and training are failing to keep up. *BioScience* 61: 942–946. <https://doi.org/10.1525/bio.2011.61.12.4>
- Flowers WR (1996) La subfamilia Eumolpinae (Coleoptera: Chrysomelidae) en América Central *Revista de Biología Tropical*, Special volume no. 2: 1–59.
- Furth DG (1998) Revision of the New World *Blepharida* (Coleoptera: Chrysomelidae: Alticinae). *Memoirs of the Entomological Society of Washington* 21: 1–109.
- Furth DG (2006) The current status of knowledge of the Alticinae of Mexico (Coleoptera: Chrysomelidae). *Bonner zoologische Beiträge* 54(4): 209–237.
- Furth DG (2013) Diversity of Alticinae in Oaxaca, Mexico: A preliminary study (Coleoptera, Chrysomelidae). *ZooKeys* 332: 1–32. <https://doi.org/10.3897/zookeys.332.4790>
- Furth DG, Savini V (1996) Checklist of the Alticinae of Central America, including Mexico (Coleoptera: Chrysomelidae). *Insecta Mundi* 10(1–4): 45–68.
- Gilbert AJ (2011) A review and clarification of the alticine genera *Hemiphrynus* Horn 1889 and *Phrynocephala* Baly 1861 (Coleoptera: Chrysomelidae: Galerucinae: Alticini). *Insecta Mundi* 200: 1–57.
- Gómez-Zurita J (2015) Systematic revision of the genus *Calligrapha* Chevrolat (Coleoptera: Chrysomelidae, Chrysomelinae) in Central America: The group of *Calligrapha argus*. *Stål. Zootaxa* 3922: 1–71. <https://doi.org/10.11646/zootaxa.3922.1.1>
- Gómez-Zurita J (2016) Systematic revision of *Calligrapha* Chevrolat (Coleoptera: Chrysomelidae) with pale spots on dark elytra and description of two new species. *Zootaxa* 4072: 61–89. <https://doi.org/10.11646/zootaxa.4072.1.3>
- Gómez-Zurita J (2018) Systematic revision of Central American *Calligrapha* Chevrolat of the subgenus *Erythrographa* subgen. nov. (Coleoptera: Chrysomelidae, Chrysomelinae). *Zootaxa* 4531 (1): 001–058. <https://doi.org/10.11646/zootaxa.4531.1.1>
- Heikertinger F, Csiki C (1939) Chrysomelidae: Halticinae I. In: Junk W, Schenkling S (Ed.) *Coleopterorum Catalogus*, Pars 59. 's-Gravenhage, 336 pp.
- Heikertinger F, Csiki C (1940) Chrysomelidae: Halticinae II. In: Junk W, Schenkling S (Ed.) *Coleopterorum Catalogus*, Pars 59. 's-Gravenhage, 337–635.
- Jacoby M (1880–1892) *Insecta. Coleoptera. Phytophaga* (part). In: Godman FD, Salvin O (Eds) *Biologia Centrali Americana*, Volume VI, Part 1. Taylor & Francis, London, 625 pp.
- Jacoby M (1888–1892) *Insecta. Coleoptera. Phytophaga* (part). In: Godman FD, Salvin O (Eds) *Biologia Centrali Americana*, Volume VI, Part 1, Supplement. Taylor & Francis, London, 374 pp. [+ 43 pls]
- Johnson CD (1979) New host records for *Acanthoscelides* (Coleoptera: Bruchidae). *Pan-Pacific Entomologist* 55(1): 61–71.
- Johnson CD (1990) Systematics of the Seed Beetle Genus *Acanthoscelides* (Bruchidae) of Northern South America. *Transactions of the American Entomological Society* 116(2): 297–618.
- Johnson CD, Kingsolver JM (1973) A revision of the genus *Sennioides* of North and Central America (Coleoptera: Bruchidae). *Technical Bulletin of the United States Department of Agriculture* 1462: 1–135.

- Johnson CD, Kingsolver JM (1976) Systematics of *Stator* of North and Central America (Coleoptera: Bruchidae). Technical Bulletin of the United States Department of Agriculture 1537: 1–101.
- King ABS, Saunders JL (1984) The invertebrate pests of annual food crops in Central America. Overseas Development Administration, London, 166 pp.
- Kingsolver JM (1969) A new species of Neotropical seed weevil affecting pigeon peas, with notes on two closely related species (Coleoptera: Bruchidae: Bruchinae). Proceedings of the Entomological Society of Washington 71(1): 50–55.
- Kingsolver JM (1970a) Synopsis of the genus *Pygiopachymerus* Pic, with notes on its relationships to other genera (Coleoptera: Bruchidae: Bruchinae). Proceedings of the Entomological Society of Washington 72(1): 37–42.
- Kingsolver JM (1970b) The identity of a bruchid feeding in seeds of *Cassida grandis* L. (Leguminosae) (Coleoptera: Bruchidae: Bruchinae). Proceedings of the Entomological Society of Washington 72(2): 203–206.
- Kingsolver JM (1980) Eighteen new species of Bruchidae, principally from Costa Rica, with host records and distributional notes (Insecta: Coleoptera). Proceedings of the Biological Society of Washington 93(1): 229–283.
- Kingsolver JM (1988): Biosystematics of the genus *Merobruchus* of continental North America and the West Indies (Coleoptera: Bruchidae). Technical Bulletin of the United States Department of Agriculture 1744: 1–63.
- Kingsolver JM (1990) Biosystematics of the genus *Zabrotes* of America North of Mexico (Coleoptera: Bruchidae). Transactions of the American Entomological Society 116(1): 135–174.
- Kingsolver JM, Johnson CD (1978) Systematics of the genus *Mimosestes* (Coleoptera: Bruchidae). Technical Bulletin of the United States Department of Agriculture 1590: 1–106.
- Kingsolver JM, Whitehead DR (1974a) Classification and comparative biology of the seed beetle genus *Caryedes* Hummel (Coleoptera: Bruchidae). Transactions of the American Entomological Society 100(4): 341–436.
- Kingsolver JM, Whitehead DR (1974b) Biosystematics of Central American species of *Ctenocolum*, a new genus of seed beetles (Coleoptera: Bruchidae). Proceedings of the Biological Society of Washington 87(27): 283–312.
- Kingsolver JM, Whitehead DR (1976) The North and Central American species of *Meibomeus* (Coleoptera: Bruchidae: Bruchinae). Technical Bulletin of the United States Department of Agriculture 1523: 1–54.
- Kleinschmidt B, Kölsch G (2011) Adopting Bacteria in Order to Adapt to Water—How Reed Beetles Colonized the Wetlands (Coleoptera, Chrysomelidae, Donaciinae). Insects 2: 540–554. <https://doi.org/10.3390/insects2040540>
- Livia C (2006) Diversity and economic importance of the leaf beetles (Coleoptera, Chrysomelidae) in the republic of Moldova. Bulletin of University of Agricultural Sciences and Veterinary Medicine Cluj-Napoca Agriculture 62: 184–187. <https://doi.org/10.15835/buasvmcn-agr:1594>
- Maes JM, Staines CL (1991) Catalogo de los Chrysomelidae (Coleoptera) de Nicaragua. Revista Nicaraguense de Entomologia 18: 1–53.
- Mancía JE, Cortéz MR (1975) Lista de insectos clasificados encontrados en el cultivo del frijol, *Phaseolus vulgaris* L. Siades 4(4): 120–136.

- Merckx J, Van Roie M, Gómez-Zurita J, Dekoninck W (2018) From theory to practice: a photographic inventory of museum collections to optimize collection management. *Biodiversity Informatics* 13: 38–48. <https://doi.org/10.17161/bi.v13i0.7036>
- Mertens J, Van Roie M, Merckx J, Dekoninck W (2017) The use of low cost compact cameras with focus stacking functionality in entomological digitization projects. *ZooKeys* 712: 141–154. <https://doi.org/10.3897/zookeys.712.20505>
- Monrós F (1960) Los generos de Chrysomelidae (Coleoptera). *Opera Lilloana* 3: 1–337. [+ 3 pls]
- Pic M (1913) Bruchidae. In: Junk W, Schenkling S (Eds) *Coleopterorum Catalogus*, Pars 55. Berlin, 74 pp.
- Rodrigues JMS, Mermudes JRM (2016) New records and distributional notes for the Neotropical genus *Isotes* Weise, 1922 (Insecta, Coleoptera, Chrysomelidae, Galerucinae). *Checklist* 12(1): 1848. <https://doi.org/10.15560/12.1.1848>
- Romero J, Johnson CD, Kingsolver JM (1996) Revision of the genus *Amblycerus* of the United States and Mexico (Coleoptera: Bruchidae: Amblycerinae). *Technical Bulletin of the United States Department of Agriculture* 1845: 1–166.
- Scherer G (1962) Bestimmungsschlüssel der neotropischen Alticinen-Genera. *Entomologische Arbeiten aus dem Museum G. Frey* 13(2): 497–607.
- Seeno TA, Scherer G, Corwin KS (1976) Jan Bechyné. Necrology and bibliography. *Entomologische Arbeiten aus dem Museum G. Frey* 27: 1–69.
- Spaeth F (1914) Chrysomelidae: 16. Cassidinae. In: Junk W, Schenkling S (Eds) *Coleopterorum Catalogus*, Pars 62. Berlin, 182 pp.
- Teran AL, Kingsolver JM (1977) Revisión del género *Megacerus* (Coleoptera: Bruchidae). *Opera Lilloana* 25: 1–287.
- Uhmann E (1960) Über Hispinae (Ins. Col.) des Senckenberg-Museums. II. Teil. 204. Beitrag zur Kenntnis der Hispinae (Chrysomelidae). *Senckenbergiana Biologica* 41(5–6): 303–305. <https://doi.org/10.1080/00222935708655969>
- Uhmann E (1961) Hispinae aus Verschiedenen Erdteilen. 202. Beitrag zur Kenntnis der Hispinae (Coleoptera, Chrysomelidae). *Pesquisas, Seria Zoologia* 10: 1–63. <https://doi.org/10.1080/00222935708655969>
- Vencl F, Levy A, Geeta R, Keller G, Windsor D (2004) Observations on the natural history, systematics and phylogeny of the Criocerinae of Costa Rica and Panama. In: Jolivet P, Santiago-Blay JA, Schmitt M (Eds) *New developments in the biology of Chrysomelidae*. SPB Academic Publishing, The Hague, 423–454.
- Weise J (1911) Chrysomelidae: Hispinae. In: Junk W, Schenkling S (Eds) *Coleopterorum Catalogus*, Pars 35., Berlin, 94 pp. <https://doi.org/10.4039/ent43107-3>
- Weise J (1916) Chrysomelidae: 12 Chrysomelinae. In: Junk W, Schenkling S (Eds) *Coleopterorum Catalogus*, Pars 68., Berlin, 255 pp.
- Weise J (1924) Chrysomelidae: 13 Galerucinae. In: Junk W, Schenkling S (Eds) *Coleopterorum Catalogus*, Pars 78., Berlin, 225 pp.
- Whitehead DR, Kingsolver JM (1975a) *Megasenius*, a new genus for *Acanthoscelides muricatus* (Sharp) (Coleoptera: Bruchidae), a seed predator of *Cassida grandis* L. (Caesalpiniaaceae) in Central America. *Proceedings of the Entomological Society of Washington* 77(4): 460–465.

- Whitehead DR, Kingsolver JM (1975b) Biosystematics of the North and Central American species of *Gibbobruchus* (Coleoptera: Bruchidae: Bruchinae). Transactions of the American Entomological Society 101(2): 167–225.
- Windsor DM, Dury GJ, Frieiro-Costa FA, Lanckowsky S, Pasteels JM (2013) Subsocial Neotropical Doryphorini (Chrysomelidae, Chrysomelinae): new observations on behavior, host plants and systematics. ZooKeys 332: 71–93. <https://doi.org/10.3897/zookeys.332.5199>

Supplementary material I

Table S1. Species and genera count per subfamily for El Salvador and each of El Salvador's departments

Authors: Martijn Van Roie, Frederik De Wint, Ayse Güngör, Charlotte Huyghe, Wouter Dekoninck, Lukáš Sekerka

Data type: species data

Explanation note: Species given for department “Unknown” are species counts for which there were country records only.

Copyright notice: This dataset is made available under the Open Database License (<http://opendatacommons.org/licenses/odbl/1.0/>). The Open Database License (ODbL) is a license agreement intended to allow users to freely share, modify, and use this Dataset while maintaining this same freedom for others, provided that the original source and author(s) are credited.

Link: <https://doi.org/10.3897/zookeys.856.32017.suppl1>