

# Bioexcel Workshop

SHARING DATA FROM MOLECULAR SIMULATIONS



Sunday 25th November - Tuesday 27th November

Bioexcel Workshop

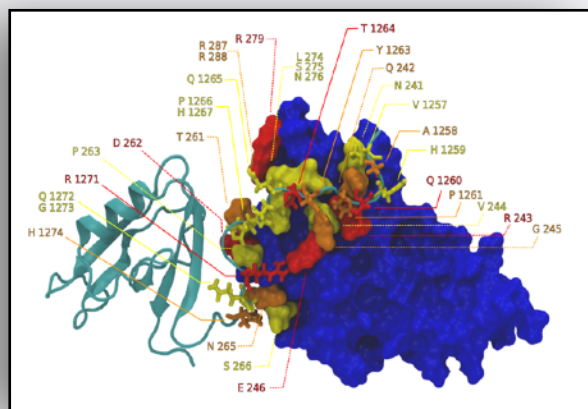
SHARING DATA FROM MOLECULAR SIMULATIONS

**WELCOME!**  
bioexcel

A stylized graphic element consisting of two overlapping, curved, leaf-like shapes. One shape is a light green color and the other is a light orange color. They are positioned behind the word 'bioexcel' in the 'WELCOME!' section.

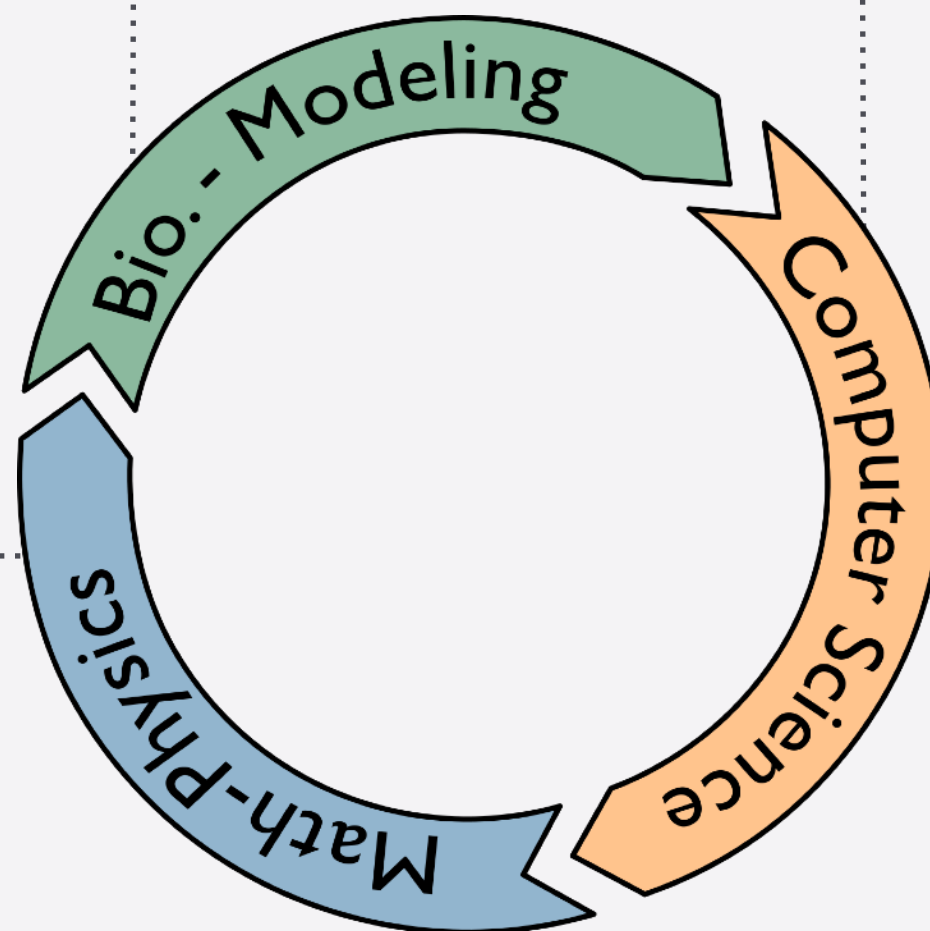
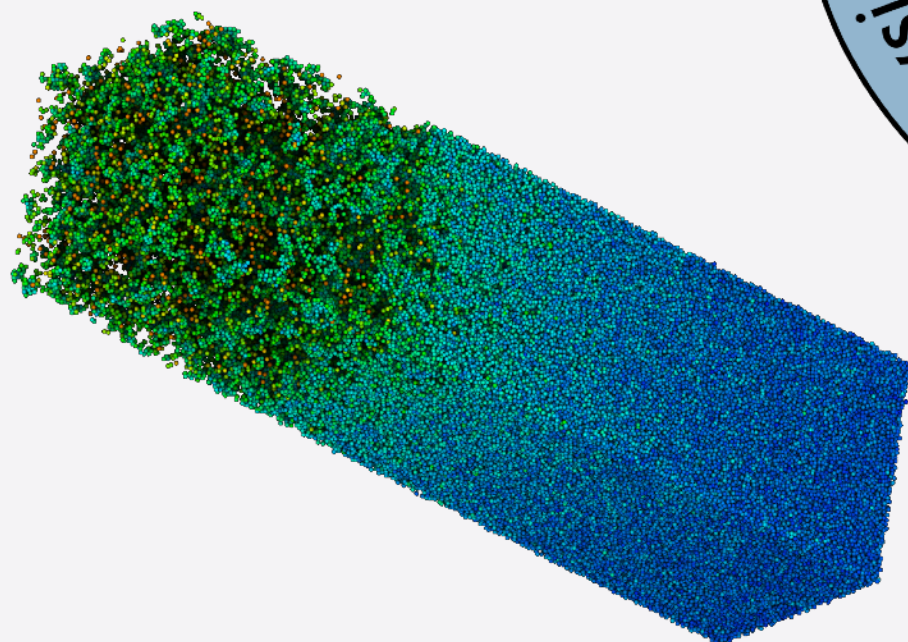
Sunday 25th November - Tuesday 16th November

## PROTEIN DOCKING

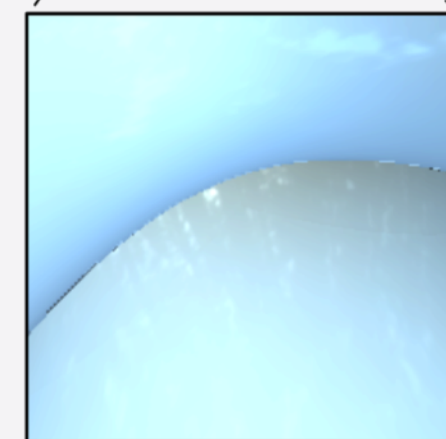
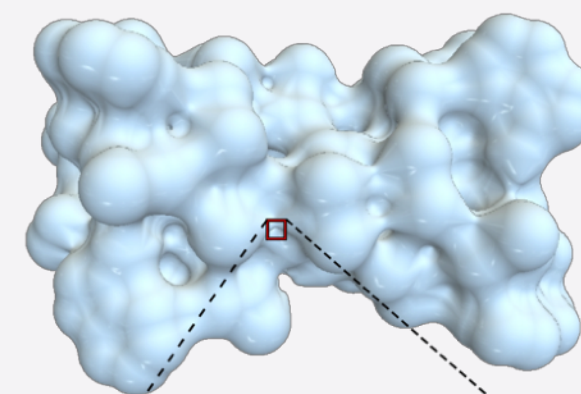


Déliot\*, Chavent\* et al. , BBRC, 2009

## MATERIAL PHYSICS



## MOLECULAR SURFACE

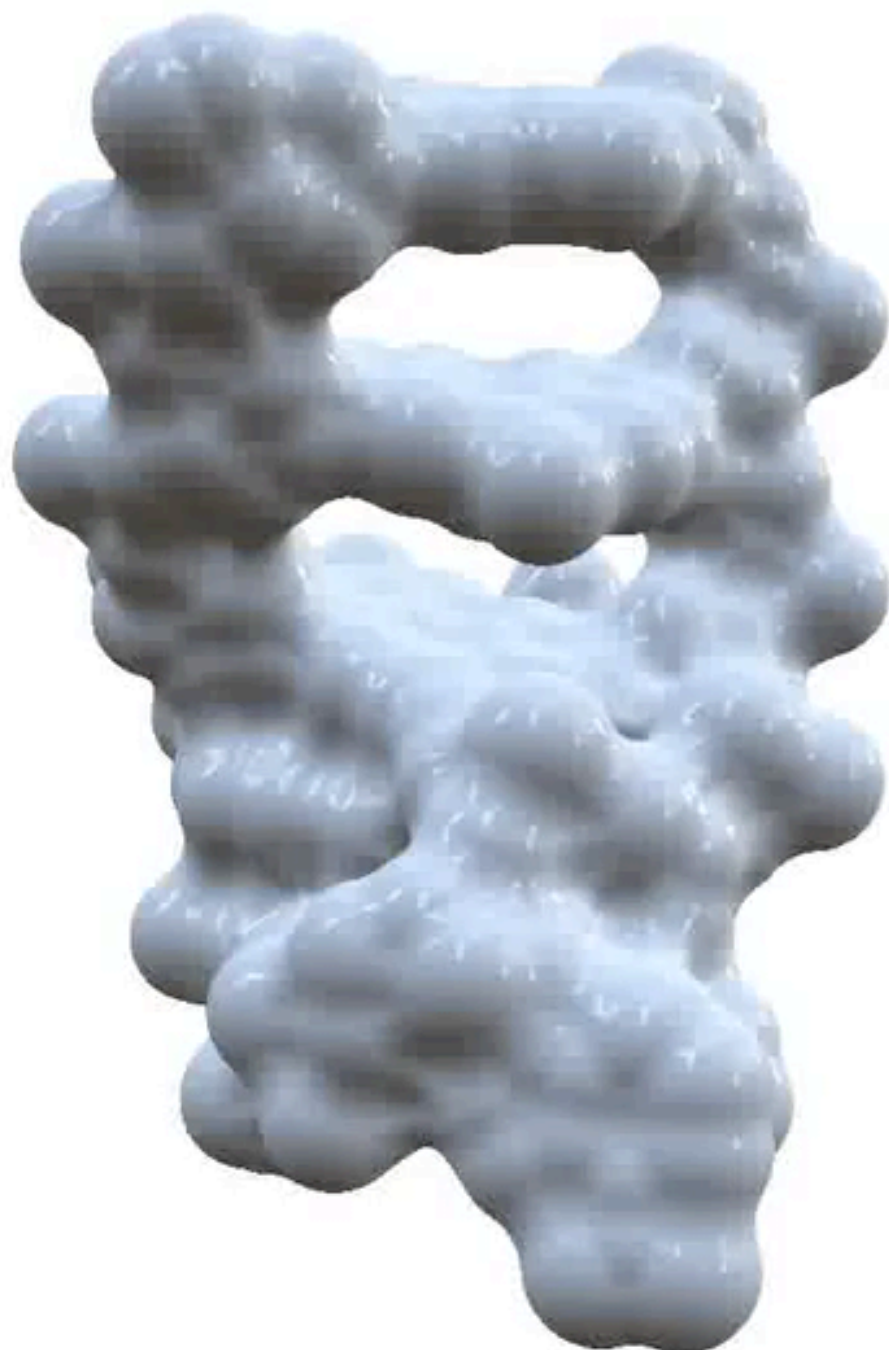


Ray Casted

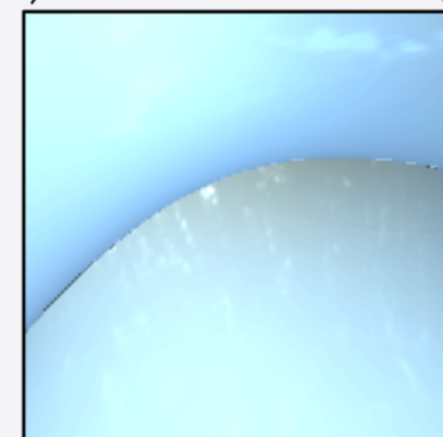
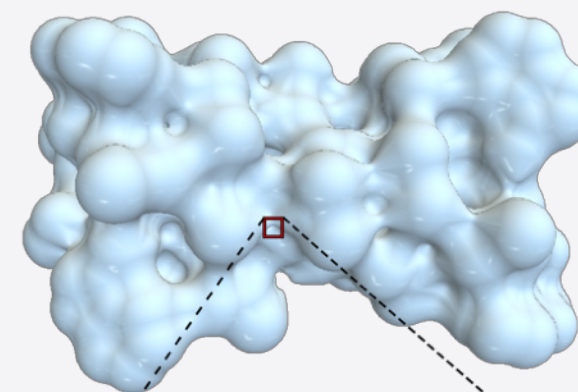
Chavent et al. , J. Mol. Graph. Mod. , 2008

Chavent et al. , J. Comp. Chem., 2011

## MOLECULAR SKIN SURFACE



## MOLECULAR SURFACE



Ray Casted

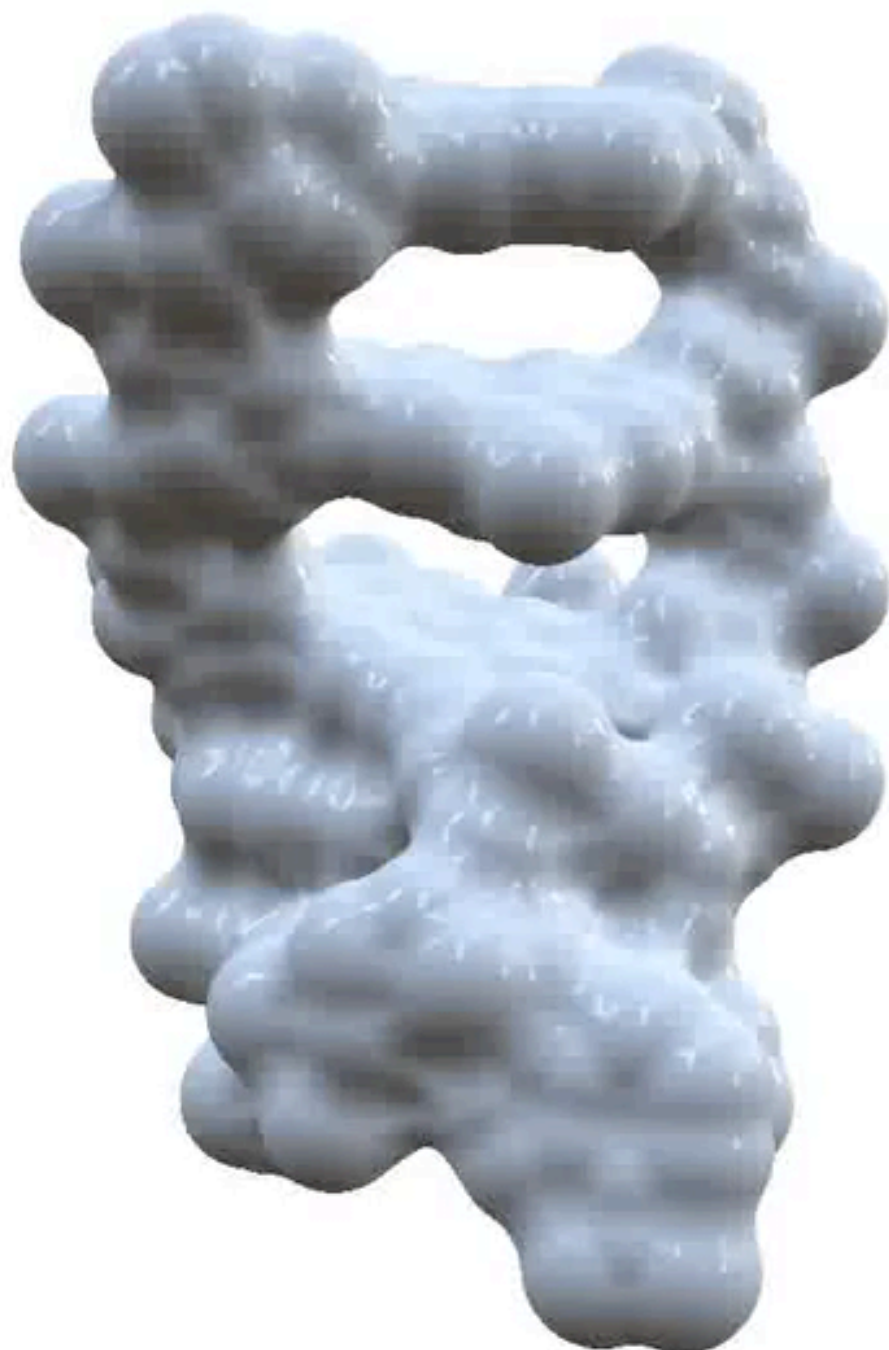
Chavent et al. , J. Mol. Graph. Mod. , 2008

Chavent et al. , J. Comp. Chem., 2011

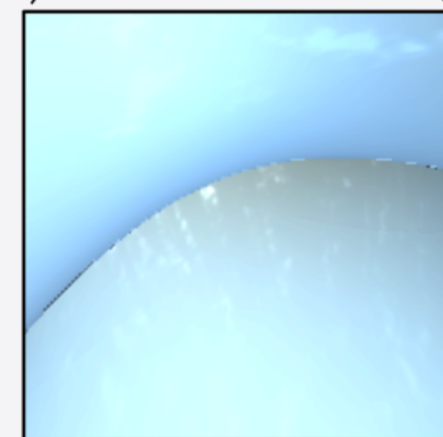
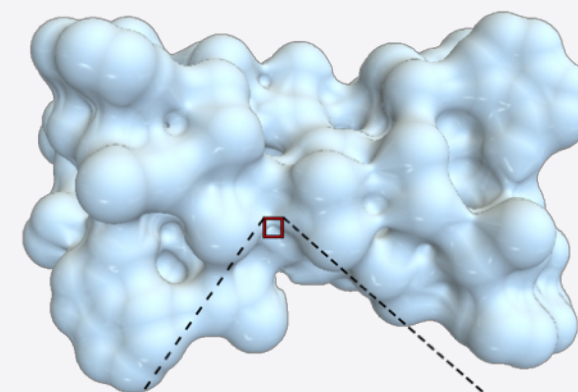
Edelsbrunner , Disc. Comp. Geom., 1999



## MOLECULAR SKIN SURFACE



## MOLECULAR SURFACE



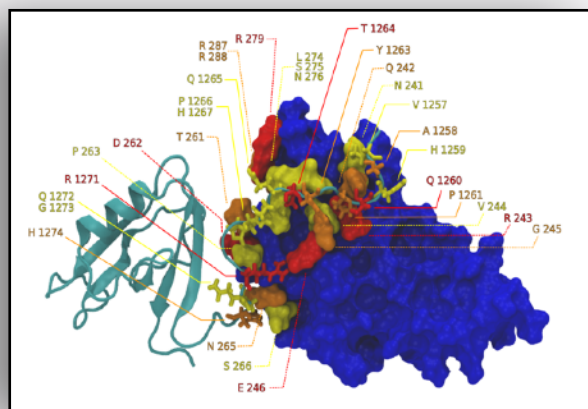
Ray Casted

Chavent et al. , J. Mol. Graph. Mod. , 2008

Chavent et al. , J. Comp. Chem., 2011

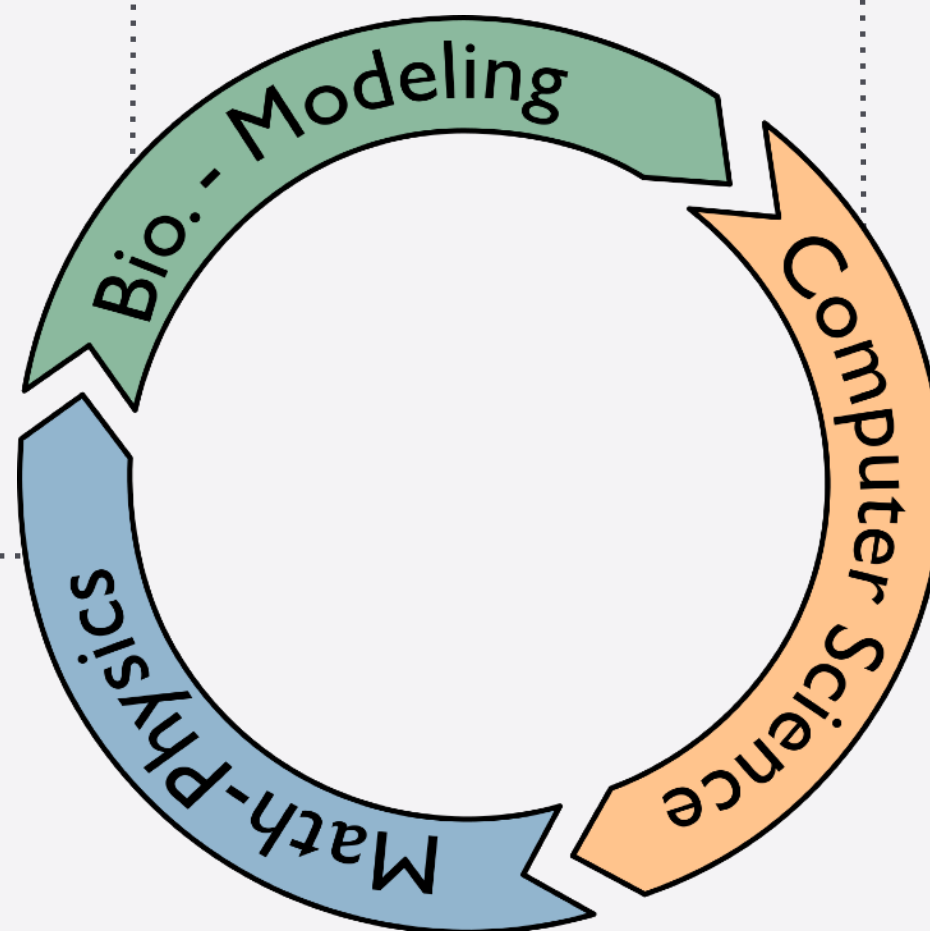
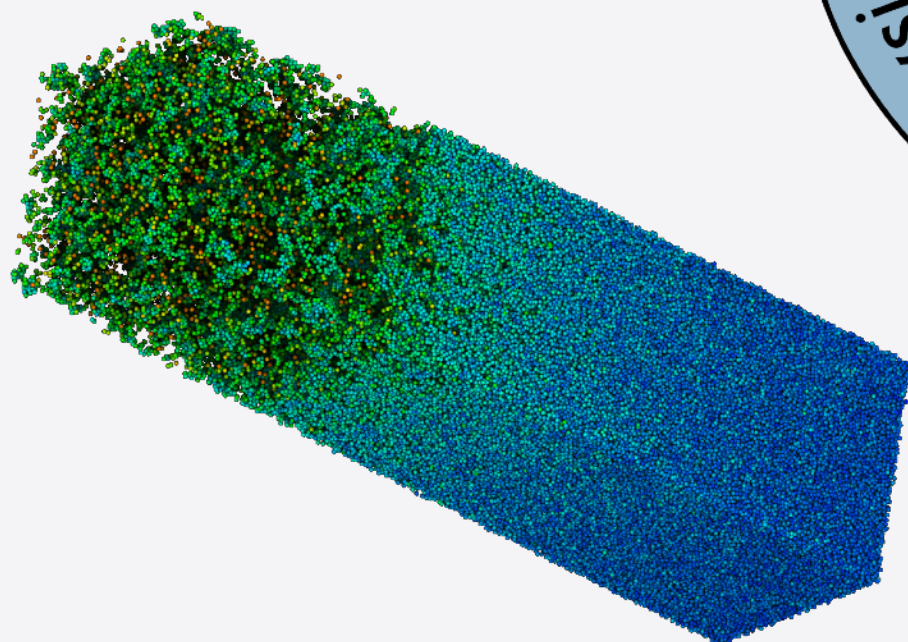
Edelsbrunner , Disc. Comp. Geom., 1999

## PROTEIN DOCKING

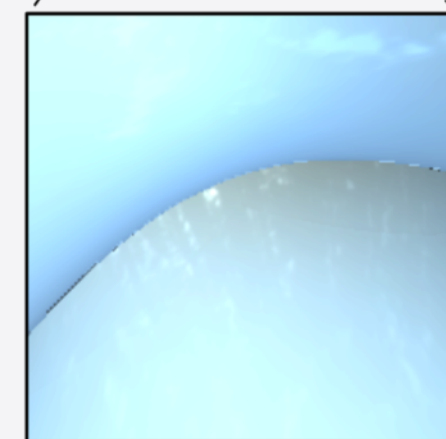
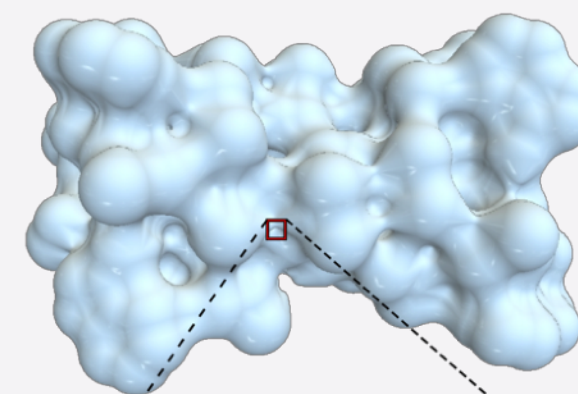


Déliot\*, Chavent\* et al. , BBRC, 2009

## MATERIAL PHYSICS



## MOLECULAR SURFACE



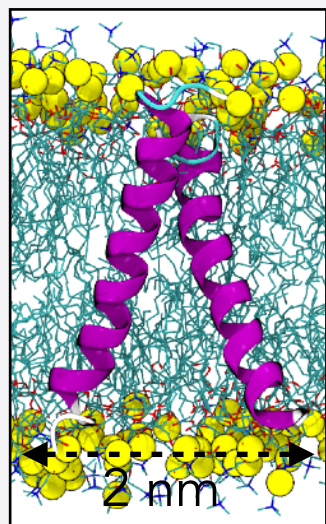
Ray Casted

Chavent et al. , J. Mol. Graph. Mod. , 2008

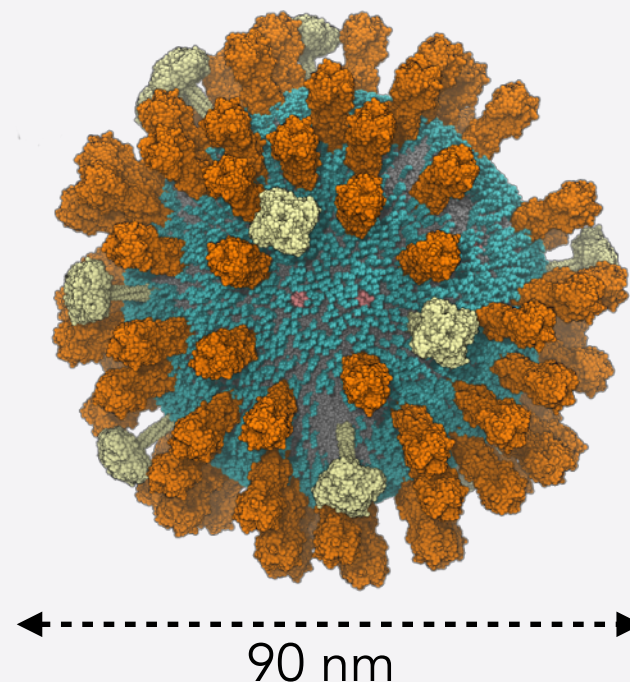
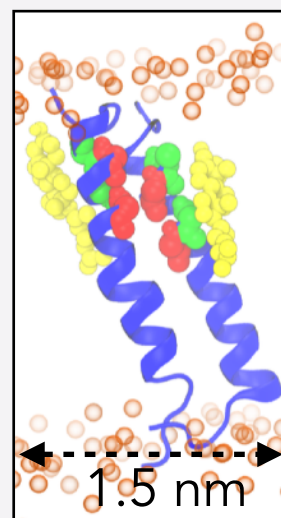
Chavent et al. , J. Comp. Chem., 2011



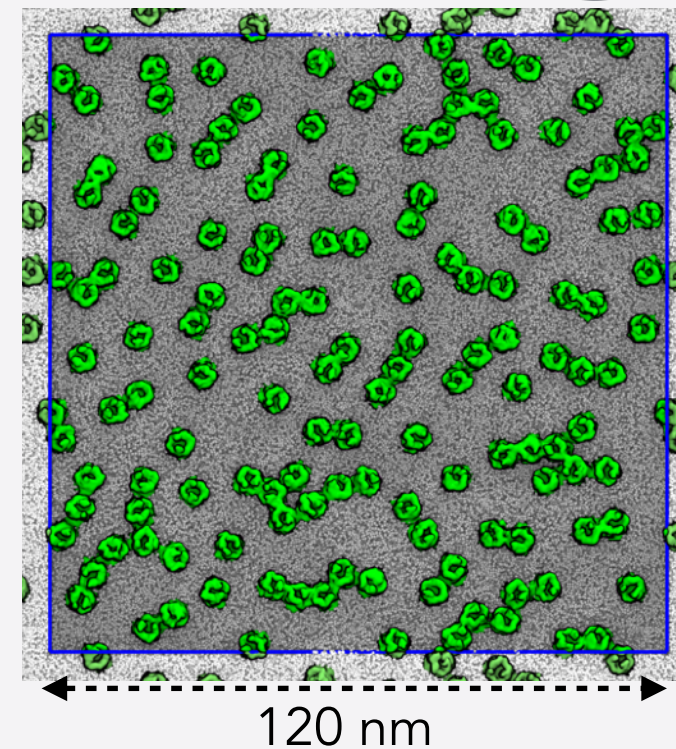
# ME, MYSELF AND I



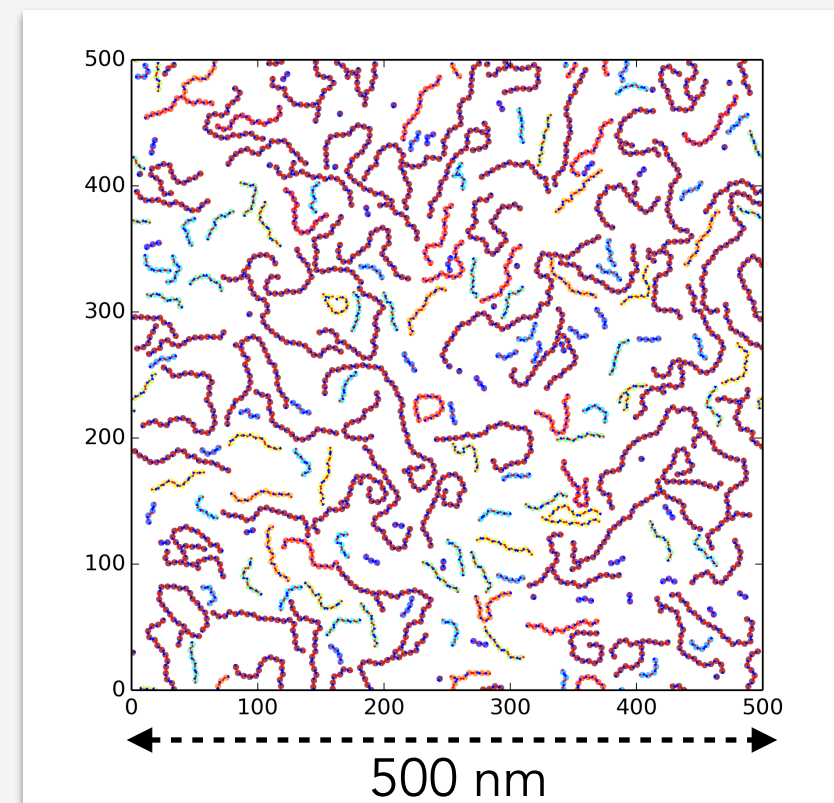
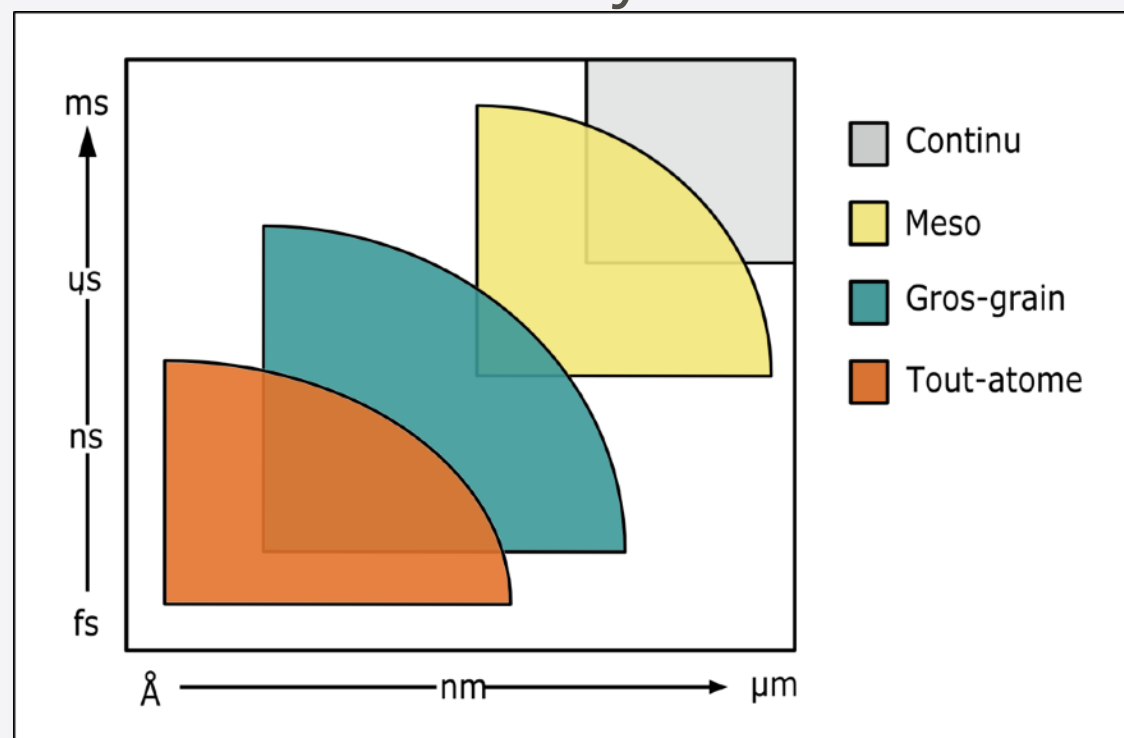
Chavent, et al. , *Biochemistry*, 2014



Reddy, et al. , *Structure*, 2015



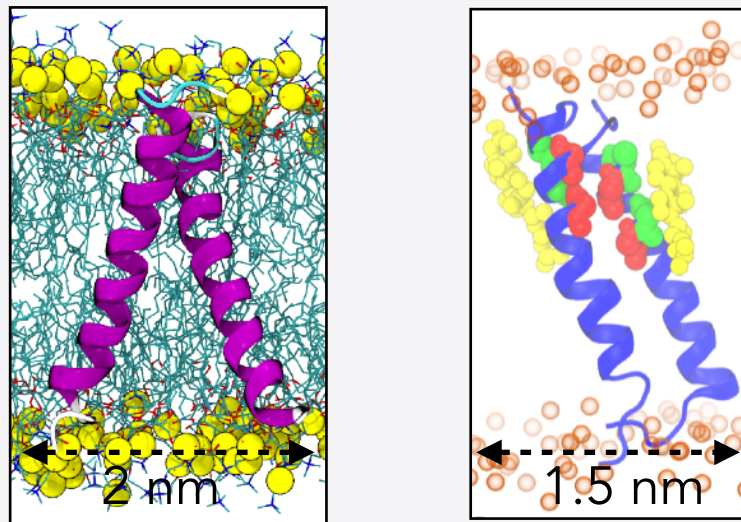
## Molecular dynamics



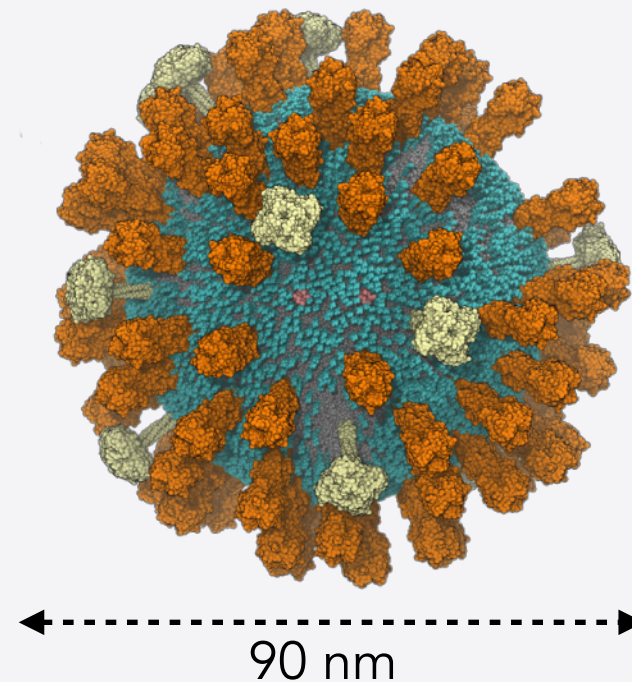
Chavent, et al. , *Nature Com.*, 2018



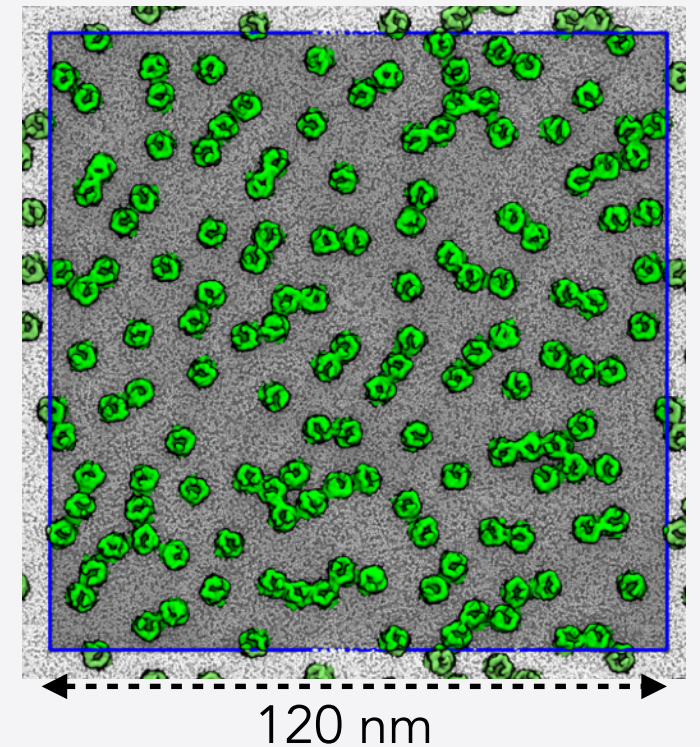
# ME, MYSELF AND I



Chavent, et al. , *Biochemistry*, 2014

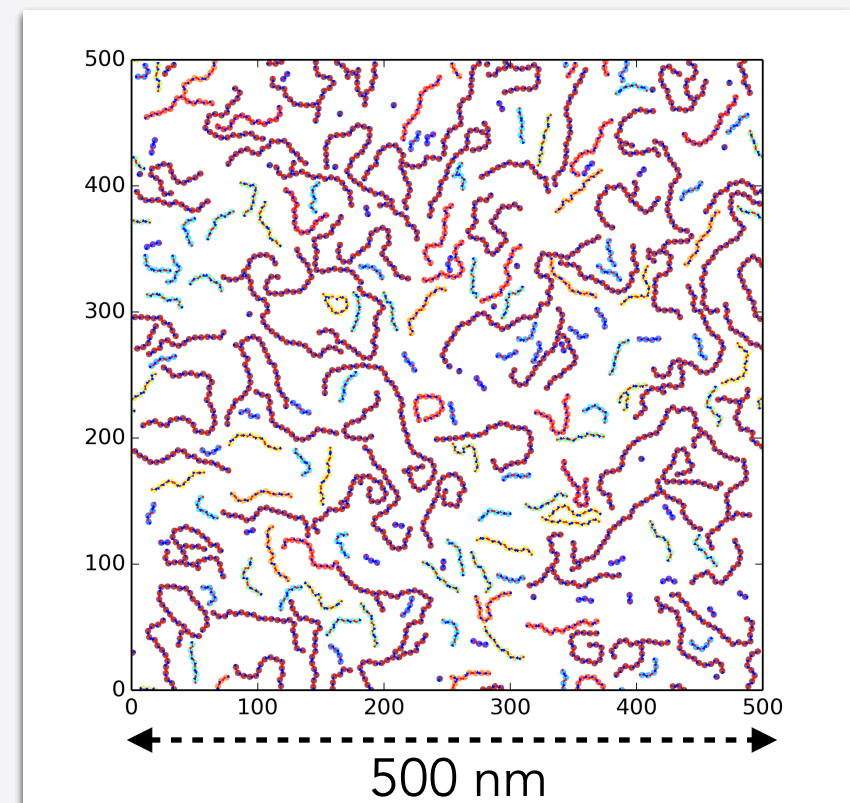
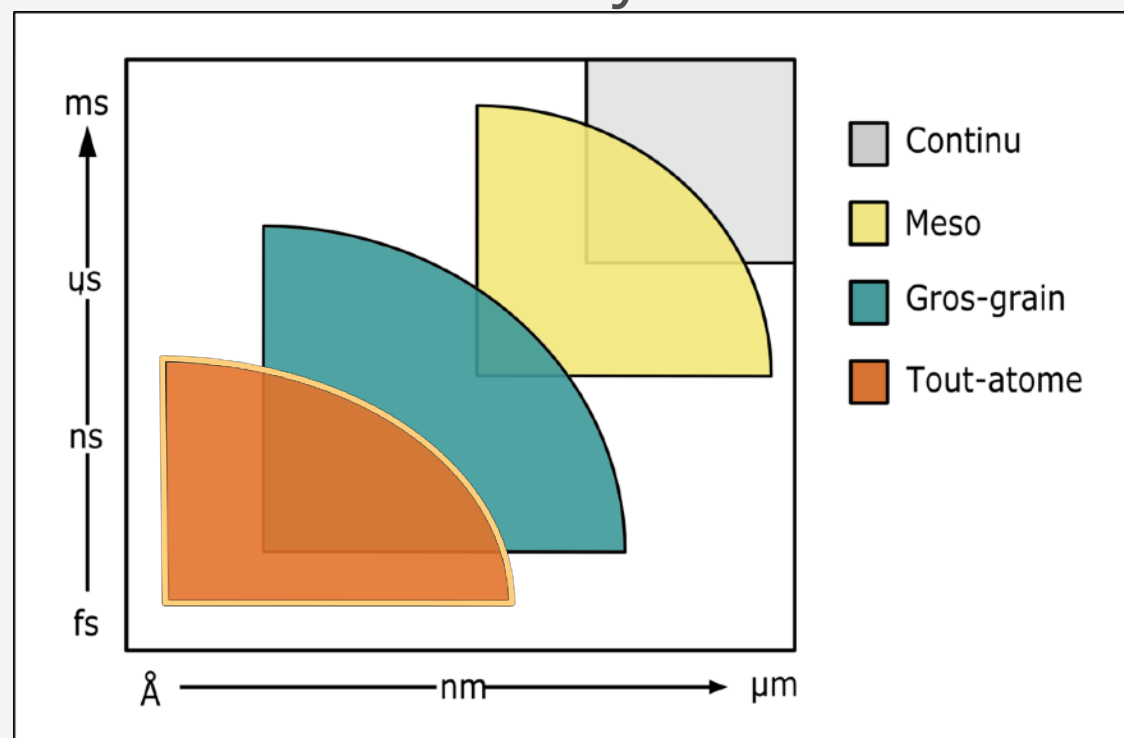


Reddy, et al. , *Structure*, 2015



## Atomistic (AT)

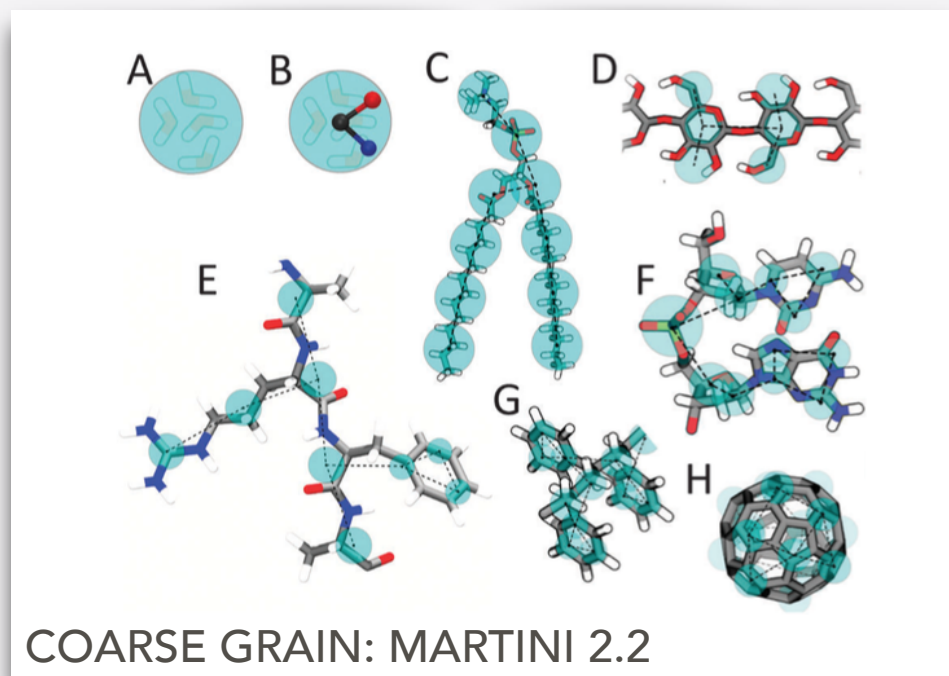
## Molecular dynamics



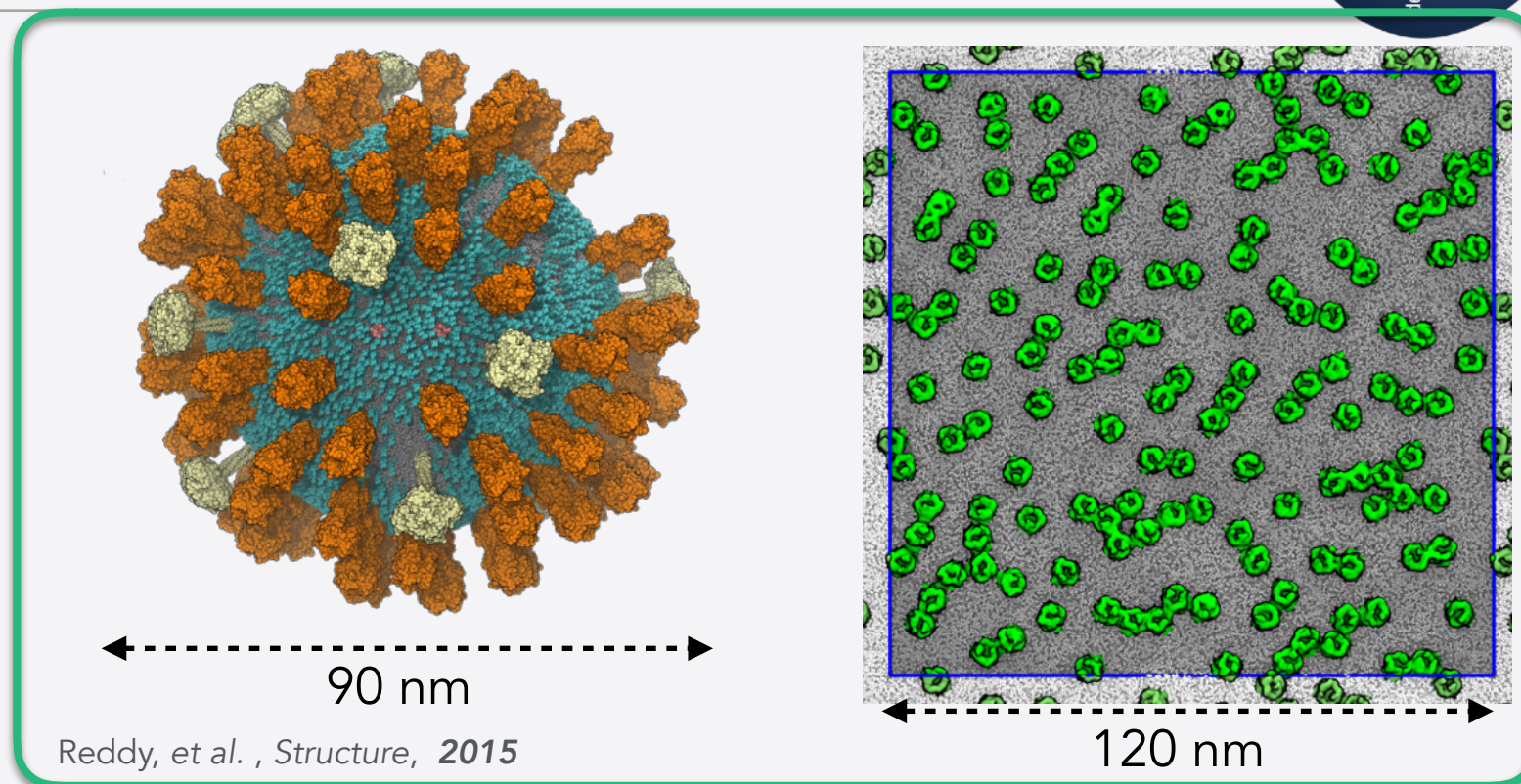
Chavent, et al. , *Nature Com.*, 2018



# ME, MYSELF AND I

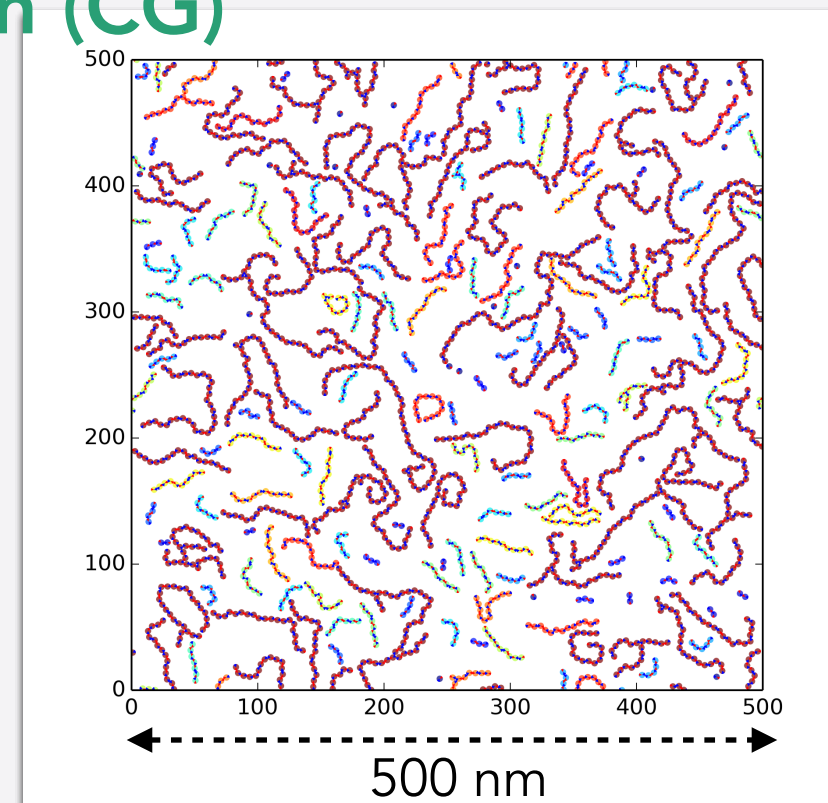
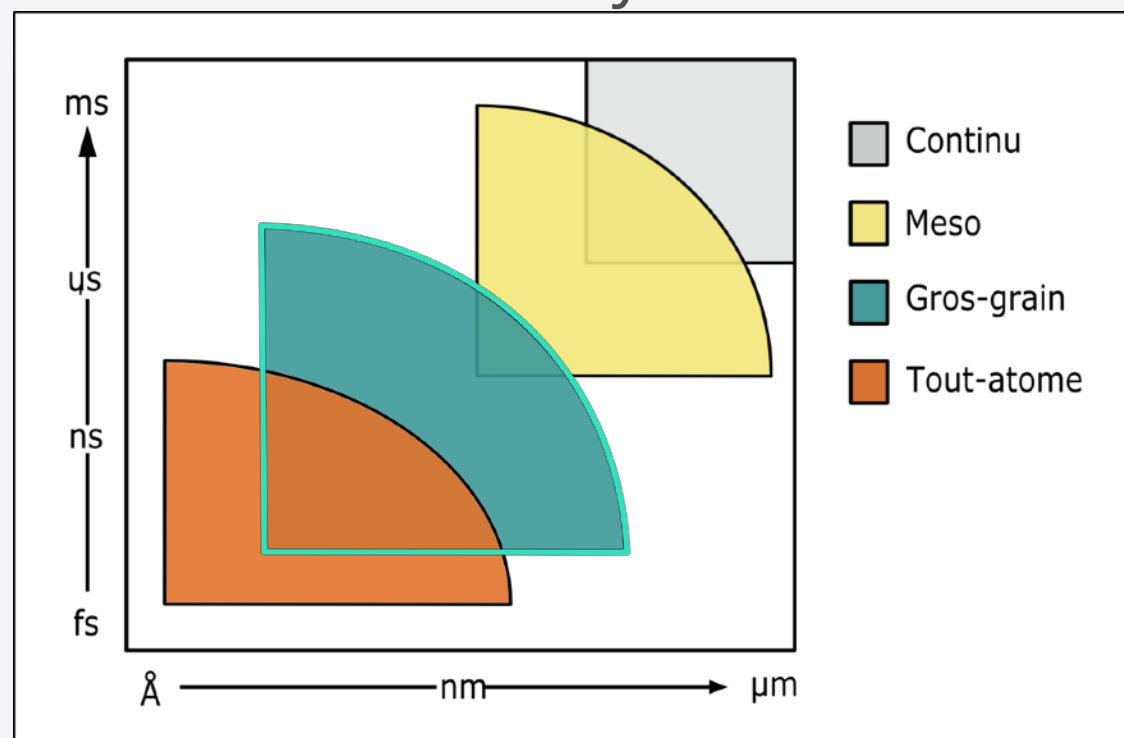


S. J. Marrink & P. T. Tielman, *Chem. Soc. Rev.* **2013**



## Coarse-Grain (CG)

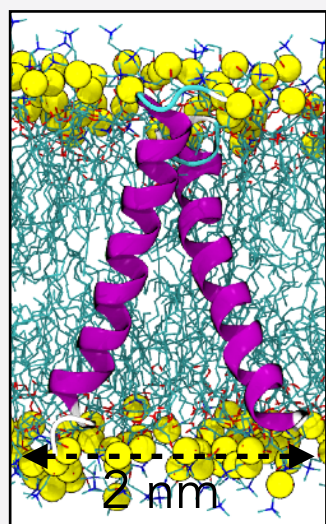
## Molecular dynamics



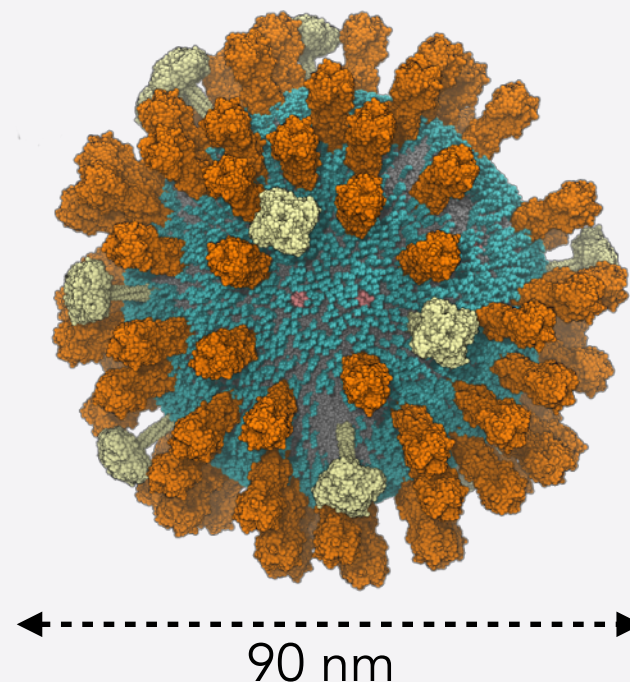
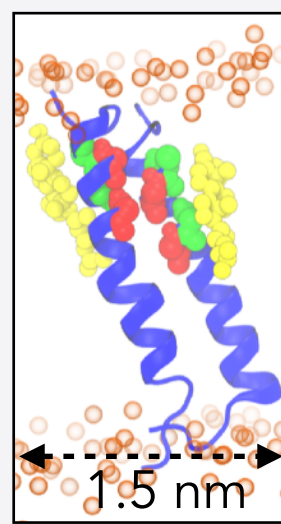
Chavent, et al. , *Nature Com.*, **2018**



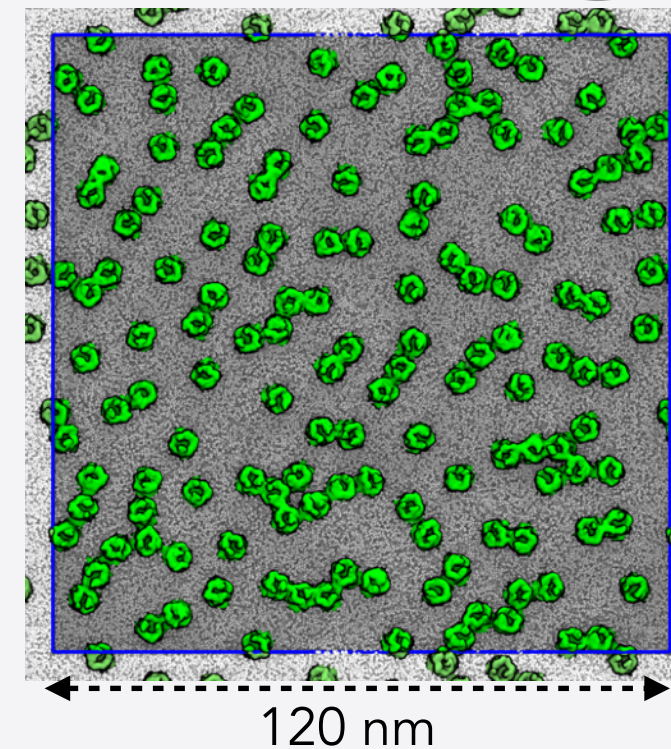
# ME, MYSELF AND I



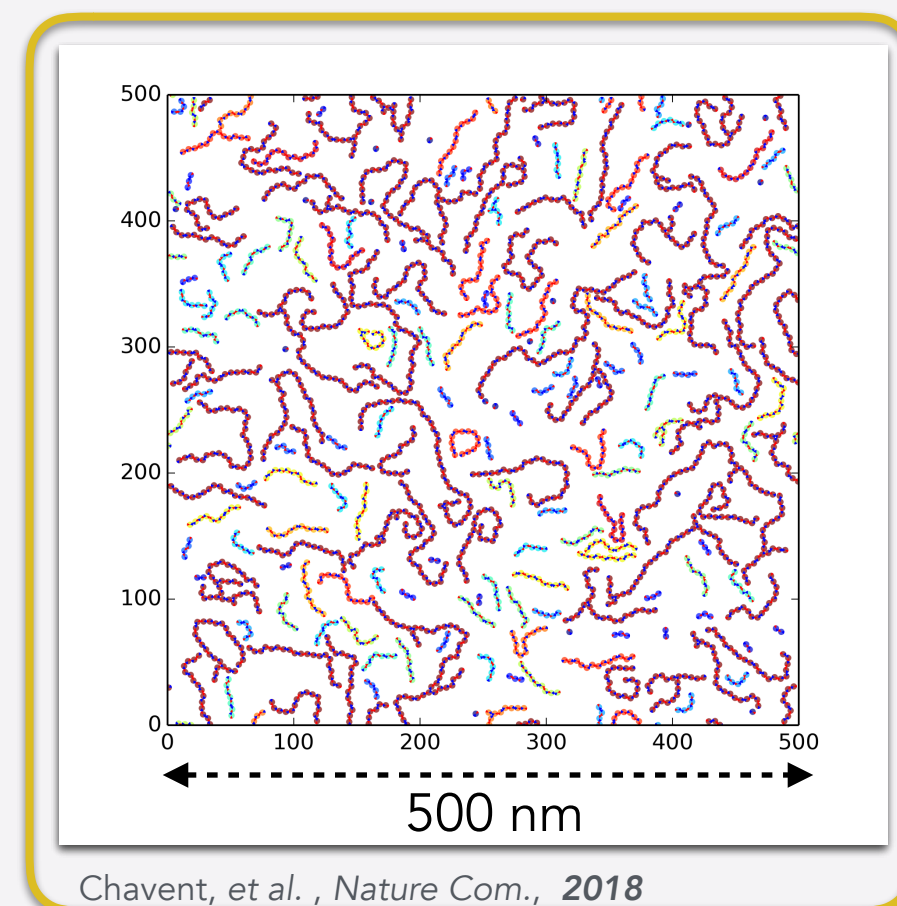
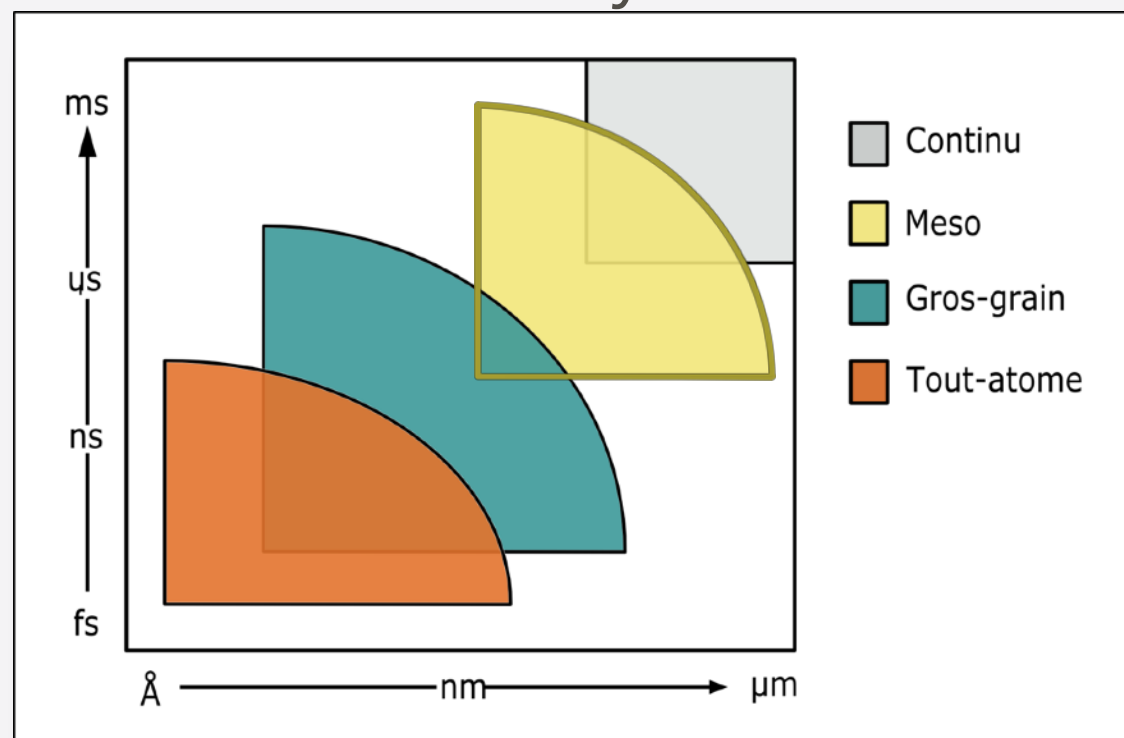
Chavent, et al. , *Biochemistry*, 2014



Reddy, et al. , *Structure*, 2015



## Molecular dynamics



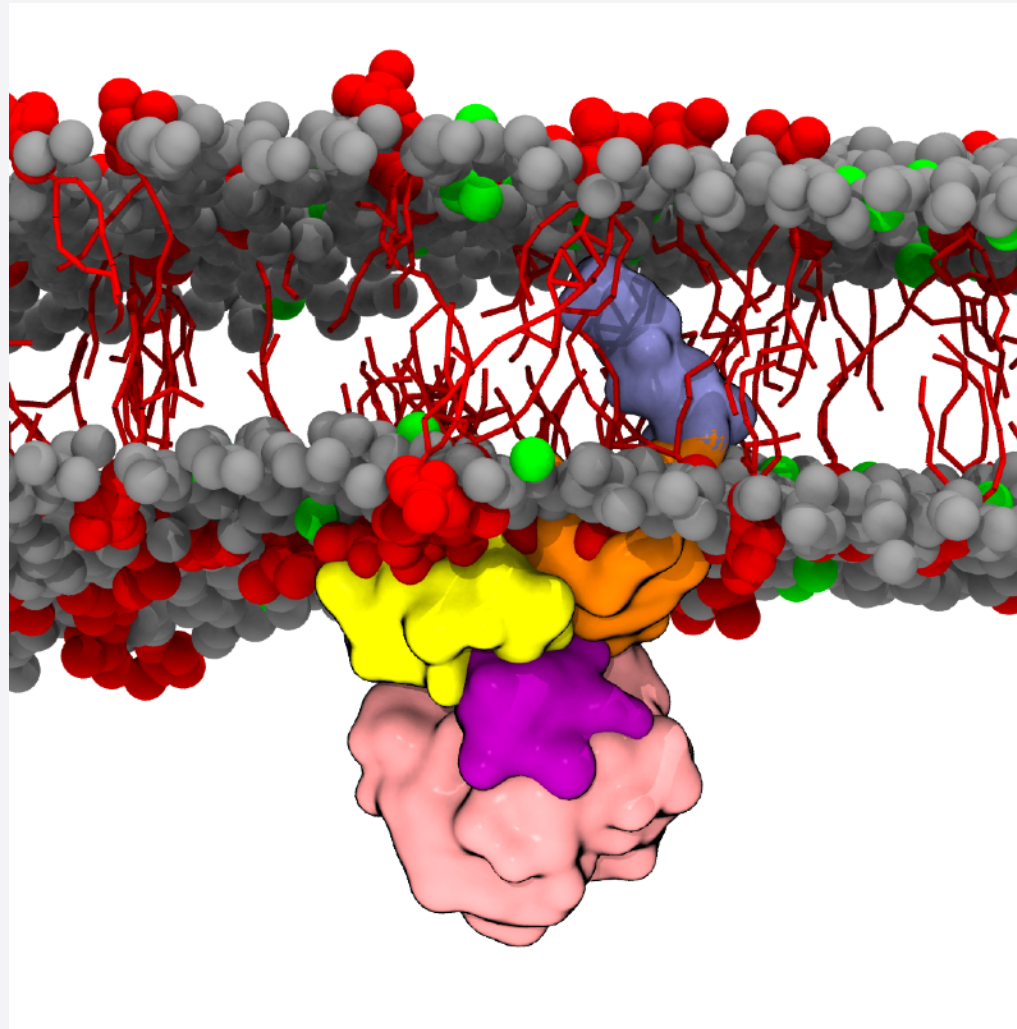
Chavent, et al. , *Nature Com.*, 2018

Meso

# HOW TO SHARE MD DATA ?

---

EphA2 KINASE interacting with  
PIP2 molecules

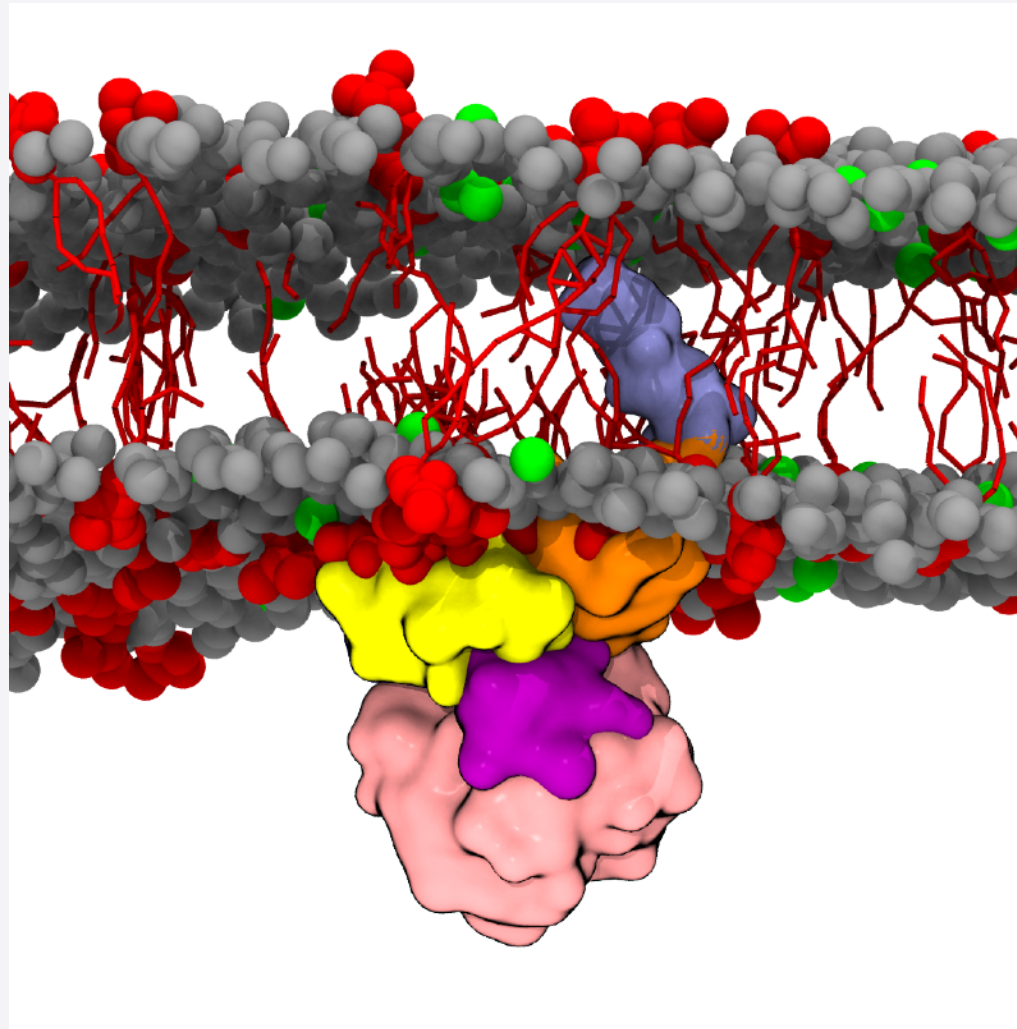


last frame -> file size: 10-50Mb

# HOW TO SHARE MD DATA ?

---

EphA2 KINASE interacting with  
PIP2 molecules



last frame -> file size: 10-50Mb



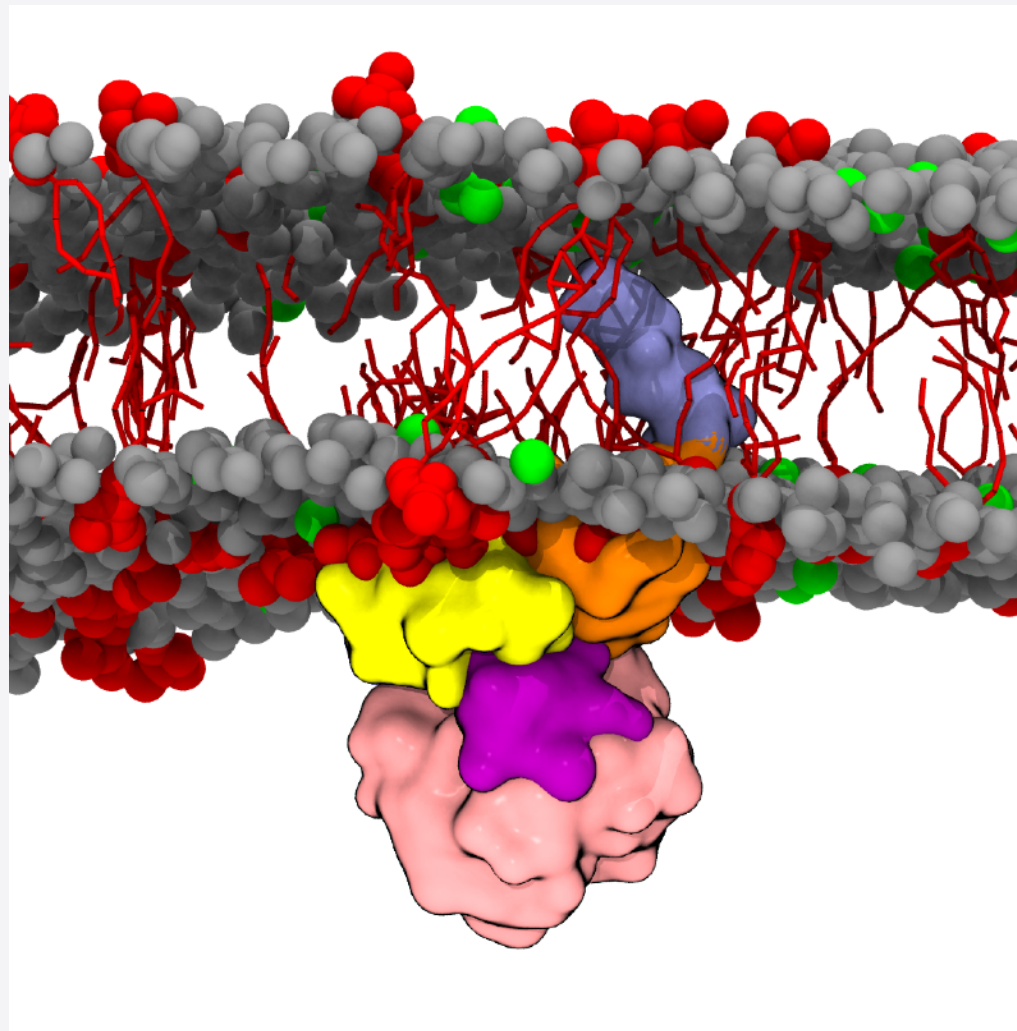
**Zenodo and link in SI**



# HOW TO SHARE MD DATA ?

---

EphA2 KINASE interacting with  
PIP2 molecules



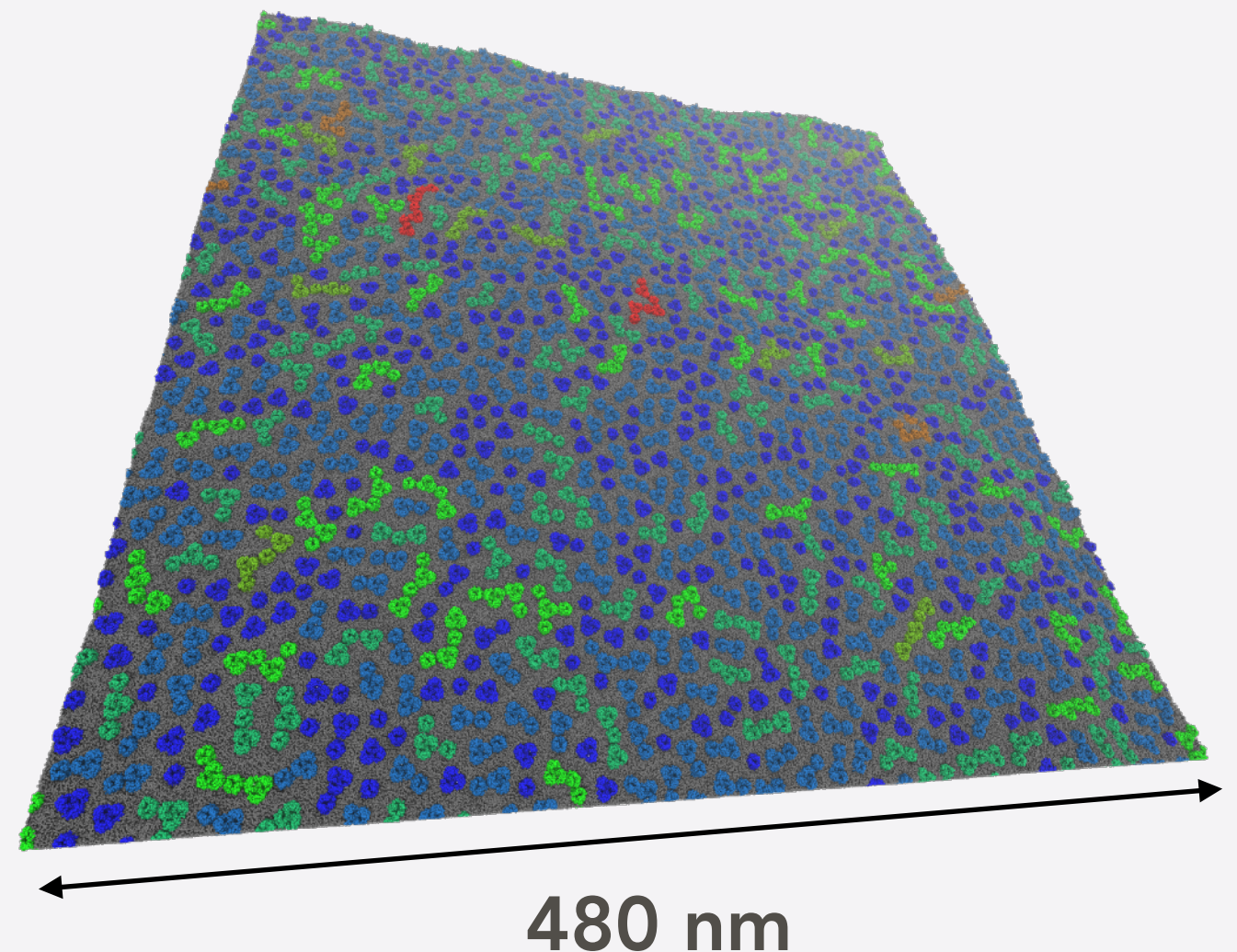
last frame -> file size: 10-50Mb



**Zenodo and link in SI**

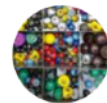
mix of BtuB and OmpF proteins

> 2000 proteins  
~22M particles (with water)  
1.5TB of data (2.5 $\mu$ s trajectory)  
1 GB for 1 snapshot



# ASKING TWITTER

---



**matthieu Chavent**

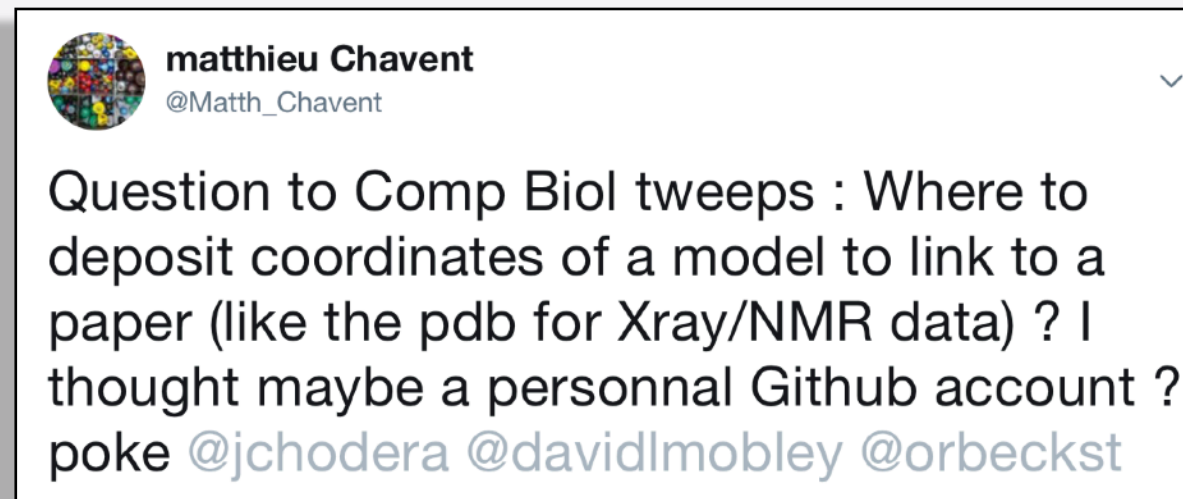
@Matth\_Chavent



Question to Comp Biol tweeps : Where to deposit coordinates of a model to link to a paper (like the pdb for Xray/NMR data) ? I thought maybe a personal Github account ?  
poke @jchodera @davidmoble @orbeckst



# ASKING TWITTER



# ASKING TWITTER



**Andrew Marsh** @marshgroup · 24 avr.

En réponse à @AnthonyC1Nash @Matth\_Chavent et 3 autres

.@figshare @datadryad also good places. Librarians have told me the more the better to maximise exposure and @altmetric impact.



**Anthony Nash**

@AnthonyC1Nash

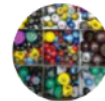
Abonné

En réponse à @Matth\_Chavent @jchodera et 2 autres

Following. Wouldn't be interested to know.

Traduire le Tweet

10:46 - 24 avr. 2018



**matthieu Chavent**

@Matth\_Chavent

Question to Comp Biol tweeps : Where to deposit coordinates of a model to link to a paper (like the pdb for Xray/NMR data) ? I thought maybe a personal Github account ?  
poke @jchodera @davidlmobley @orbeckst

# ASKING TWITTER



**Andrew Marsh** @marshgroup · 24 avr.

En réponse à @AnthonyC1Nash @Matth\_Chavent et 3 autres

.@figshare @datadryad also good places. Librarians have told me the more the better to maximise exposure and @altmetric impact.



**Anthony Nash**  
@AnthonyC1Nash

Abonné

En réponse à @Matth\_Chavent @jchodera et 2 autres

Following. Wouldn't be interested to know.

Traduire le Tweet

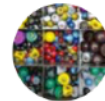
10:46 - 24 avr. 2018



**John Chodera** @jchodera · 24 avr.

En réponse à @Matth\_Chavent @davidlmobley @orbeckst

Your friendly journal editors have thought about this question! @Naturepub suggests @figshare and @datadryad for cases that are not clearly handled by standardized databases. [nature.com/authors/policies](https://www.nature.com/authors/policies)



**matthieu Chavent**  
@Matth\_Chavent

Question to Comp Biol tweeps : Where to deposit coordinates of a model to link to a paper (like the pdb for Xray/NMR data) ? I thought maybe a personal Github account ?  
poke @jchodera @davidlmobley @orbeckst

# ASKING TWITTER



**Andrew Marsh** @marshgroup · 24 avr.

En réponse à @AnthonyC1Nash @Matth\_Chavent et 3 autres

.@figshare @datadryad also good places. Librarians have told me the more the better to maximise exposure and @altmetric impact.



**Anthony Nash**  
@AnthonyC1Nash

Abonné

En réponse à @Matth\_Chavent @jchodera et 2 autres

Following. Wouldn't be interested to know.

Traduire le Tweet

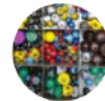
10:46 - 24 avr. 2018



**John Chodera** @jchodera · 24 avr.

En réponse à @Matth\_Chavent @davidlmobley @orbeckst

Your friendly journal editors have thought about this question! @Naturepub suggests @figshare and @datadryad for cases that are not clearly handled by standardized databases. [nature.com/authors/policies](https://www.nature.com/authors/policies)



**matthieu Chavent**  
@Matth\_Chavent

Question to Comp Biol tweeps : Where to deposit coordinates of a model to link to a paper (like the pdb for Xray/NMR data) ? I thought maybe a personal Github account ?  
poke @jchodera @davidlmobley @orbeckst



**Mikael Trellet** @mika\_trellet · 24 avr.

En réponse à @Matth\_Chavent @jchodera et 2 autres

Partial answer: if this is a model you got from integrative/hybrid methods have a look at [pdb-dev.wwpdb.org](https://www.pdb-dev.org)

# ASKING TWITTER



**Andrew Marsh** @marshgroup · 24 avr.

En réponse à @AnthonyC1Nash @Matth\_Chavent et 3 autres

.@figshare @datadryad also good places. Librarians have told me the more the better to maximise exposure and @altmetric impact.



**Anthony Nash**  
@AnthonyC1Nash

Abonné

En réponse à @Matth\_Chavent @jchodera et 2 autres

Following. Wouldn't be interested to know.

Traduire le Tweet

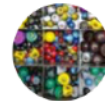
10:46 - 24 avr. 2018



**John Chodera** @jchodera · 24 avr.

En réponse à @Matth\_Chavent @davidlmobley @orbeckst

Your friendly journal editors have thought about this question! @Naturepub suggests @figshare and @datadryad for cases that are not clearly handled by standardized databases. [nature.com/authors/policies](https://www.nature.com/authors/policies)



**matthieu Chavent**  
@Matth\_Chavent

Question to Comp Biol tweeps : Where to deposit coordinates of a model to link to a paper (like the pdb for Xray/NMR data) ? I thought maybe a personal Github account ?  
poke @jchodera @davidlmobley @orbeckst



**David Mobley** @davidlmobley · 24 avr.

I like to think of two categories: (a) broad dissemination/ease of use in the short term, and (b) long-term archival even after I have forgotten about it or am dead. For (a) former, GitHub, @figshare, @datadryad (haven't used it yet but it looks good) and others are good options.



**Mikael Trellet** @mika\_trellet · 24 avr.

En réponse à @Matth\_Chavent @jchodera et 2 autres

Partial answer: if this is a model you got from integrative/hybrid methods have a look at [pdb-dev.wwpdb.org](https://www.pdb-dev.org)



# ASKING TWITTER



**Andrew Marsh** @marshgroup · 24 avr.

En réponse à @AnthonyC1Nash @Matth\_Chavent et 3 autres

.@figshare @datadryad also good places. Librarians have told me the more the better to maximise exposure and @altmetric impact.



**Anthony Nash**  
@AnthonyC1Nash

Abonné

En réponse à @Matth\_Chavent @jchodera et 2 autres

Following. Wouldn't be interested to know.

Traduire le Tweet

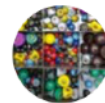
10:46 - 24 avr. 2018



**John Chodera** @jchodera · 24 avr.

En réponse à @Matth\_Chavent @davidlmobley @orbeckst

Your friendly journal editors have thought about this question! @Naturepub suggests @figshare and @datadryad for cases that are not clearly handled by standardized databases. [nature.com/authors/policies](https://nature.com/authors/policies)



**matthieu Chavent**  
@Matth\_Chavent

Question to Comp Biol tweeps : Where to deposit coordinates of a model to link to a paper (like the pdb for Xray/NMR data) ? I thought maybe a personal Github account ?  
poke @jchodera @davidlmobley @orbeckst



**David Mobley** @davidlmobley · 24 avr.

I like to think of two categories: (a) broad dissemination/ease of use in the short term, and (b) long-term archival even after I have forgotten about it or am dead. For (a) former, GitHub, @figshare, @datadryad (haven't used it yet but it looks good) and others are good options.



**Pierre Poulain** @pierrepo · 24 avr.

;-) no need to put the data elsewhere. @ZENODO\_ORG is backed up in @CERN\_FR cloud infrastructure and implements FAIR principles [about.zenodo.org/principles/](https://about.zenodo.org/principles/) Pretty safe!



**Mikael Trellet** @mika\_trellet · 24 avr.

En réponse à @Matth\_Chavent @jchodera et 2 autres

Partial answer: if this is a model you got from integrative/hybrid methods have a look at [pdb-dev.wwpdb.org](https://pdb-dev.wwpdb.org)

# ASKING TWITTER



**Andrew Marsh** @marshgroup · 24 avr.

En réponse à @AnthonyC1Nash @Matth\_Chavent et 3 autres

.@figshare @datadryad also good places. Librarians have told me the more the better to maximise exposure and @altmetric impact.



**Anthony Nash**  
@AnthonyC1Nash

Abonné

En réponse à @Matth\_Chavent @jchodera et 2 autres

Following. Wouldn't be interested to know.

Traduire le Tweet

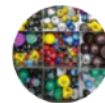
10:46 - 24 avr. 2018



**John Chodera** @jchodera · 24 avr.

En réponse à @Matth\_Chavent @davidlmobley @orbeckst

Your friendly journal editors have thought about this question! @Naturepub suggests @figshare and @datadryad for cases that are not clearly handled by standardized databases. [nature.com/authors/policies](https://nature.com/authors/policies)



**matthieu Chavent**  
@Matth\_Chavent

Question to Comp Biol tweeps : Where to deposit coordinates of a model to link to a paper (like the pdb for Xray/NMR data) ? I thought maybe a personal Github account ?  
poke @jchodera @davidlmobley @orbeckst



**David Mobley** @davidlmobley · 24 avr.

I like to think of two categories: (a) broad dissemination/ease of use in the short term, and (b) long-term archival even after I have forgotten about it or am dead. For (a) former, GitHub, @figshare, @datadryad (haven't used it yet but it looks good) and others are good options.



**Pierre Poulain** @pierrepo · 24 avr.

;-) no need to put the data elsewhere. @ZENODO\_ORG is backed up in @CERN\_FR cloud infrastructure and implements FAIR principles [about.zenodo.org/principles/](https://about.zenodo.org/principles/) Pretty safe!



**Dr Lucy Forrest** @LucyRForrest · 25 avr.

For the record, lately I also try to attach the structural model as supplementary data. As a backup.



**Mikael Trellet** @mika\_trellet · 24 avr.

En réponse à @Matth\_Chavent @jchodera et 2 autres

Partial answer: if this is a model you got from integrative/hybrid methods have a look at [pdb-dev.wwpdb.org](https://pdb-dev.wwpdb.org)

# ASKING TWITTER



**Andrew Marsh** @marshgroup · 24 avr.

En réponse à @AnthonyC1Nash @Matth\_Chavent et 3 autres

.@figshare @datadryad also good places. Librarians have told me the more the better to maximise exposure and @altmetric impact.



**Anthony Nash**

@AnthonyC1Nash

Abonné

En réponse à @Matth\_Chavent @jchodera et 2 autres

Following. Wouldn't be interested to know.

Traduire le Tweet

10:46 - 24 avr. 2018



**John Chodera** @jchodera · 24 avr.

En réponse à @Matth\_Chavent @davidlmobley @orbeckst

Your friendly journal editors have thought about this question! @Naturepub suggests @figshare and @datadryad for cases that are not clearly handled by standardized databases. [nature.com/authors/policies](https://nature.com/authors/policies)



**matthieu Chavent**

@Matth\_Chavent

Question to Comp Biol tweeps : Where to deposit coordinates of a model to link to a paper (like the pdb for Xray/NMR data) ? I thought maybe a personal Github account ?  
poke @jchodera @davidlmobley @orbeckst



**David Mobley** @davidlmobley · 24 avr.

I like to think of two categories: (a) broad dissemination/ease of use in the short term, and (b) long-term archival even after I have forgotten about it or am dead. For (a) former, GitHub, @figshare, @datadryad (haven't used it yet but it looks good) and others are good options.



**Pierre Poulain** @pierrepo · 24 avr.

;-) no need to put the data elsewhere. @ZENODO\_ORG is backed up in @CERN\_FR cloud infrastructure and implements FAIR principles [about.zenodo.org/principles/](https://about.zenodo.org/principles/) Pretty safe!



**Dr Lucy Forrest** @LucyRForrest · 25 avr.

For the record, lately I also try to attach the structural model as supplementary data. As a backup.



**Kresten Lindorff-Larsen** @LindorffLarsen · 27 août

En réponse à @Matth\_Chavent @jchodera et 2 autres

For single structures we have previously also just had coordinates as supporting information, e.g. here [sciencedirect.com/science/article](https://www.sciencedirect.com/science/article)... Obviously this isn't a good solution for trajectories



**Mikael Trellet** @mika\_trellet · 24 avr.

En réponse à @Matth\_Chavent @jchodera et 2 autres

Partial answer: if this is a model you got from integrative/hybrid methods have a look at [pdb-dev.wwpdb.org](https://pdb-dev.wwpdb.org)



# ASKING TWITTER



**Andrew Marsh** @marshgroup · 24 avr.

En réponse à @AnthonyC1Nash @Matth\_Chavent et 3 autres

.@figshare @datadryad also good places. Librarians have told me the more the better to maximise exposure and @altmetric impact.



**Anthony Nash**

@AnthonyC1Nash

Abonné

En réponse à @Matth\_Chavent @jchodera et 2 autres

Following. Wouldn't be interested to know.

Traduire le Tweet

10:46 - 24 avr. 2018



**John Chodera** @jchodera · 24 avr.

En réponse à @Matth\_Chavent @davidlmobley @orbeckst

Your friendly journal editors have thought about this question! @Naturepub suggests @figshare and @datadryad for cases that are not clearly handled by standardized databases. [nature.com/authors/policies](https://nature.com/authors/policies)



**matthieu Chavent**

@Matth\_Chavent

Question to Comp Biol tweeps : Where to deposit coordinates of a model to link to a paper (like the pdb for Xray/NMR data) ? I thought maybe a personal Github account ?  
poke @jchodera @davidlmobley @orbeckst



**Lucie Delemotte** @DelemotteLab · 27 août

Same here, we use OSF. Individual files can't be more than 5GB, but there doesn't seem to be a limit on number of files!



**David Mobley** @davidlmobley · 24 avr.

I like to think of two categories: (a) broad dissemination/ease of use in the short term, and (b) long-term archival even after I have forgotten about it or am dead. For (a) former, GitHub, @figshare, @datadryad (haven't used it yet but it looks good) and others are good options.



**Pierre Poulain** @pierrepo · 24 avr.

;-) no need to put the data elsewhere. @ZENODO\_ORG is backed up in @CERN\_FR cloud infrastructure and implements FAIR principles [about.zenodo.org/principles/](https://about.zenodo.org/principles/) Pretty safe!



**Dr Lucy Forrest** @LucyRForrest · 25 avr.

For the record, lately I also try to attach the structural model as supplementary data. As a backup.



**Kresten Lindorff-Larsen** @LindorffLarsen · 27 août

En réponse à @Matth\_Chavent @jchodera et 2 autres

For single structures we have previously also just had coordinates as supporting information, e.g. here [sciencedirect.com/science/article](https://www.sciencedirect.com/science/article)... Obviously this isn't a good solution for trajectories



**Mikael Trellet** @mika\_trellet · 24 avr.

En réponse à @Matth\_Chavent @jchodera et 2 autres

Partial answer: if this is a model you got from integrative/hybrid methods have a look at [pdb-dev.wwpdb.org](https://pdb-dev.wwpdb.org)

# ASKING TWITTER



**Andrew Marsh** @marshgroup · 24 avr.

En réponse à @AnthonyC1Nash @Matth\_Chavent et 3 autres

.@figshare @datadryad also good places. Librarians have told me the more the better to maximise exposure and @altmetric impact.



**Anthony Nash**  
@AnthonyC1Nash

Abonne

En réponse à @Matth\_Chavent @jchodera et 2 autres

Following. Wouldn't be interested to know.

Traduire le Tweet

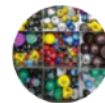
10:46 - 24 avr. 2018



**John Chodera** @jchodera · 24 avr.

En réponse à @Matth\_Chavent @davidlmobley @orbeckst

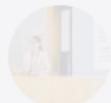
Your friendly journal editors have thought about this question! @Naturepub suggests @figshare and @datadryad for cases that are not clearly handled by standardized databases. [nature.com/authors/policies](https://nature.com/authors/policies)



**matthieu Chavent**  
@Matth\_Chavent

My brain:

Don't say it  
Don't say it  
Don't say it  
Don't say it  
Don't say it  
Don't say it  
Don't say it  
Don't say it  
Don't say it



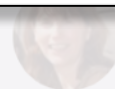
**Lucie Delemotte** @DelemotteLab · 27 avr.

Same here, we use OSF. Individual files & folders doesn't seem to be a limit on number of files



**Pierre Poulain** @pierrepo · 24 avr.

;-) no need to put the data elsewhere. @ZENODO\_ORG @CERN\_FR cloud infrastructure and implements FAIR principles. [about.zenodo.org/principles/](https://about.zenodo.org/principles/) Pretty safe!



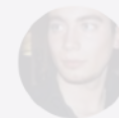
For the record, lately I also try to attach the structural model as supplementary data. As a backup.



**Kresten Lindorff-Larsen** @LindorffLarsen · 27 août

En réponse à @Matth\_Chavent @jchodera et 2 autres

For single structures we have previously also just had coordinates as supporting information, e.g. here [sciencedirect.com/science/article/pii/S0969212617300000](https://www.sciencedirect.com/science/article/pii/S0969212617300000). Obviously this isn't a good solution for trajectories



**Mikael Trellet** @mika\_trellet · 24 avr.

En réponse à @Matth\_Chavent @jchodera et 2 autres

Partial answer: if this is a model you got from integrative/hybrid methods have a look at [pdb-dev.wwpdb.org](https://pdb-dev.wwpdb.org)



# ASKING TWITTER



**Andrew Marsh** @marshgroup · 24 avr.

En réponse à @AnthonyC1Nash @Matth\_Chavent et 3 autres

.@figshare @datadryad also good places. Librarians have told me the more the better to maximise exposure and @altmetric impact.



**Anthony Nash**

@AnthonyC1Nash

Abonné

En réponse à @Matth\_Chavent @jchodera et 2 autres

Following. Wouldn't be interested to know.

Traduire le Tweet

10:46 - 24 avr. 2018



**John Chodera** @jchodera · 24 avr.

En réponse à @Matth\_Chavent @davidlmobley @orbeckst

Your friendly journal editors have thought about this question! @Naturepub suggests @figshare and @datadryad for cases that are not clearly handled by standardized databases. [nature.com/authors/policies](https://nature.com/authors/policies)



**matthieu Chavent**

@Matth\_Chavent

En réponse à @pierrepo @davidlmobley et 10 autres

By the way guys, as this discussion is going very well, we may write a short "10 simple rules to store and share your comp chem data" or is it already done ?



**Lucie Delemotte** @DelemotteLab · 27 août

Same here, we use OSF. Individual files can't be more than 5GB, but there doesn't seem to be a limit on number of files!



**David Mobley** @davidlmobley · 24 avr.

I like to think of two categories: (a) broad dissemination/ease of use in the short term, and (b) long-term archival even after I have forgotten about it or am dead. For (a) former, GitHub, @figshare, @datadryad (haven't used it yet but it looks good) and others are good options.



**Pierre Poulain** @pierrepo · 24 avr.

;-) no need to put the data elsewhere. @ZENODO\_ORG is backed up in @CERN\_FR cloud infrastructure and implements FAIR principles [about.zenodo.org/principles/](https://about.zenodo.org/principles/) Pretty safe!



**Dr Lucy Forrest** @LucyRForrest · 25 avr.

For the record, lately I also try to attach the structural model as supplementary data. As a backup.



**Kresten Lindorff-Larsen** @LindorffLarsen · 27 août

En réponse à @Matth\_Chavent @jchodera et 2 autres

For single structures we have previously also just had coordinates as supporting information, e.g. here [sciencedirect.com/science/article](https://www.sciencedirect.com/science/article)... Obviously this isn't a good solution for trajectories



**Mikael Trellet** @mika\_trellet · 24 avr.

En réponse à @Matth\_Chavent @jchodera et 2 autres

Partial answer: if this is a model you got from integrative/hybrid methods have a look at [pdb-dev.wwpdb.org](https://pdb-dev.wwpdb.org)

# ASKING TWITTER

---



**matthieu Chavent**

@Matth\_Chavent



En réponse à @pierrepo @davidlmobley et 10 autres

By the way guys, as this dicussion is going very well, we may write a short "10 simple rules to store and share your comp chem data" or is it already done ?

# ASKING TWITTER



**David Mobley** @davidlmobley · 24 avr.



En réponse à @Matth\_Chavent @pierrepo et 10 autres

How about a GitHub repo? Then eventually turn it into a "Best Practices" minireview for LiveCoMS, the Living Journal of Computational Molecular Science? A what to do and why to do it that way.



**matthieu Chavent**

@Matth\_Chavent



En réponse à @pierrepo @davidlmobley et 10 autres

By the way guys, as this dicussion is going very well, we may write a short "10 simple rules to store and share your comp chem data" or is it already done ?

# ASKING TWITTER



**David Mobley** @davidlmobley · 24 avr.



En réponse à @Matth\_Chavent @pierrepo et 10 autres

How about a GitHub repo? Then eventually turn it into a "Best Practices" minireview for LiveCoMS, the Living Journal of Computational Molecular Science? A what to do and why to do it that way.

 Traduire le Tweet



1



6



12



**matthieu Chavent** @Matth\_Chavent · 24 avr.



This is a good idea and it would be very useful!

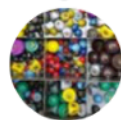
 Traduire le Tweet



4



3



**matthieu Chavent** @Matth\_Chavent · 24 avr.



I would be happy to contribute but not sure that I am the most legitimate for leading this project. If somebody want to push a bit further happy to help as much as I can

# ASKING TWITTER



**David Mobley** @davidlmobley · 24 avr.

En réponse à @Matth\_Chavent @pierrepo et 10 autres

How about a GitHub repo? Then eventually turn it into a "Best Practices" minireview for LiveCoMS, the Living Journal of Computational Molecular Science? A what to do and why to do it that way.

Traduire le Tweet



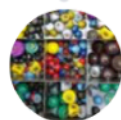
1



6



12



**matthieu Chavent** @Matth\_Chavent · 24 avr.

This is a good idea and it would be very useful!

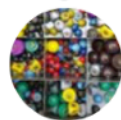
Traduire le Tweet



4



3



**matthieu Chavent** @Matth\_Chavent · 24 avr.

I would be happy to contribute but not sure that I am the most legitimate for leading this project. If somebody want to push a bit further happy to help as much as I can

Traduire le Tweet



1



1



**David Mobley** @davidlmobley · 24 avr.

Key thing, IMO, is to find someone who's willing to be the driver (you, if you want) then get people who are "legitimate" to sign on. The largest part of getting something important done is, well, doing it. Legitimacy follows. :)

Traduire le Tweet



# ASKING TWITTER



**David Mobley** @davidlmobley · 24 avr.

En réponse à @Matth\_Chavent @pierrepo et 10 autres

How about a GitHub repo? Then eventually turn it into a "Best Practices" minireview for LiveCoMS, the Living Journal of Computational Molecular Science? A what to do and why to do it that way.

Traduire le Tweet



1



6



12



**matthieu Chavent** @Matth\_Chavent · 24 avr.

This is a good idea and it would be very useful!

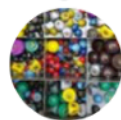
Traduire le Tweet



4



3



**matthieu Chavent** @Matth\_Chavent · 24 avr.

I would be happy to contribute but not sure that I am the most legitimate for leading this project. If somebody want to push a bit further happy to help as much as I can

Traduire le Tweet



1



1



**David Mobley** @davidlmobley · 24 avr.

Key thing, IMO, is to find someone who's willing to be the driver (you, if you want) then get people who are "legitimate" to sign on. The largest part of getting something important done is, well, doing it. Legitimacy follows. :)

Traduire le Tweet



1



2



**matthieu Chavent** @Matth\_Chavent · 24 avr.

Well, if I can find enough people to help I am happy to lead this. Please DM me if you want to participate to start this project

# WORKSHOP FUNDING AND ORGANIZATION

---



Rossen Apostolov



Erik Lindahl

# WORKSHOP FUNDING AND ORGANIZATION

---



Rossen Apostolov



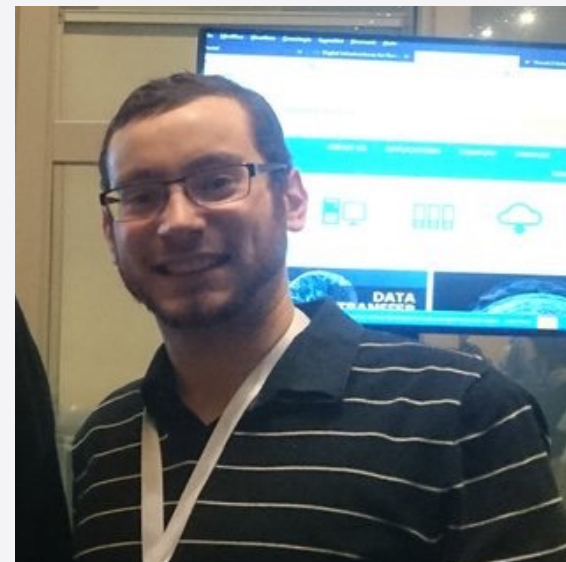
Erik Lindahl



Lucie Delemotte  
(SciLifeLab)



Reba Howard  
(SciLifeLab)



Mikael Trellet  
(Utrecht Uni)



Daniel Smith  
(MolSSI)

WHAT ARE THE GOALS OF THIS WORKSHOP ?

---



WHAT ARE THE GOALS OF THIS WORKSHOP ?

---

## **Discuss**

(during the session and before/after)

WHAT ARE THE GOALS OF THIS WORKSHOP ?

---

## **Discuss**

(during the session and before/after)

## **Find best practices**

(what are the solutions we already have?)

# WHAT ARE THE GOALS OF THIS WORKSHOP ?

---

## **Discuss**

(during the session and before/after)

## **Find best practices**

(what are the solutions we already have?)

## **Highlight issues - find new solutions**

(what can we develop in the future?)



# WHAT ARE THE GOALS OF THIS WORKSHOP ?

---

## **Discuss**

(during the session and before/after)

## **Find best practices**

(what are the solutions we already have?)

## **Highlight issues - find new solutions**

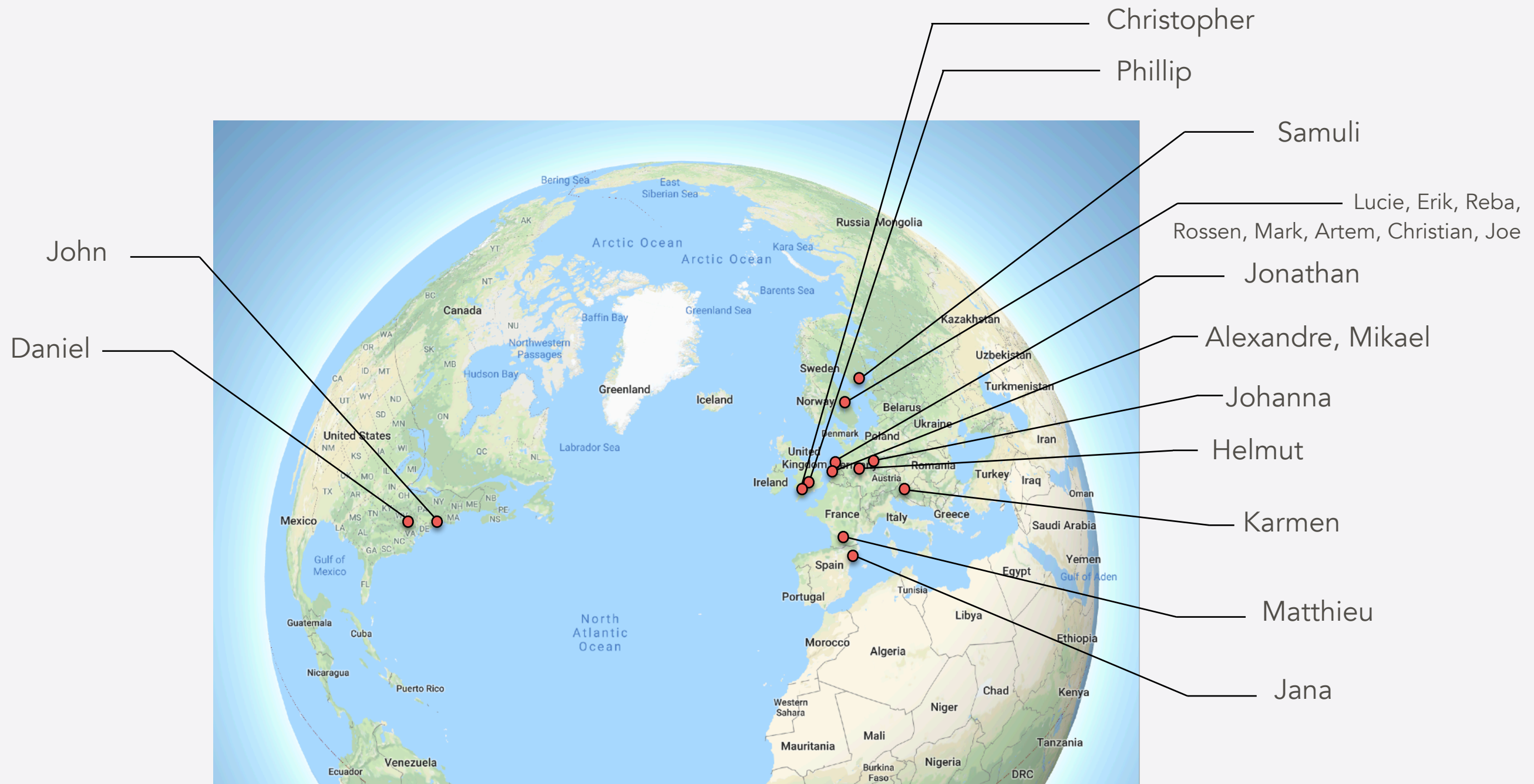
(what can we develop in the future?)

## **Write - disseminate**

(gather these pieces of information in a white paper)

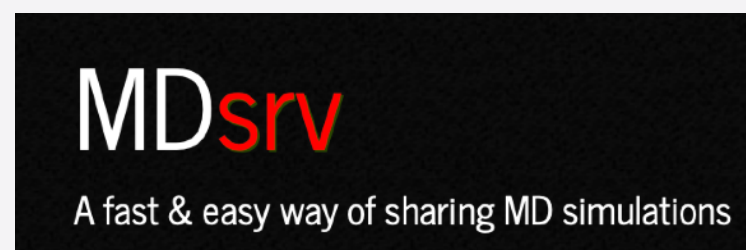
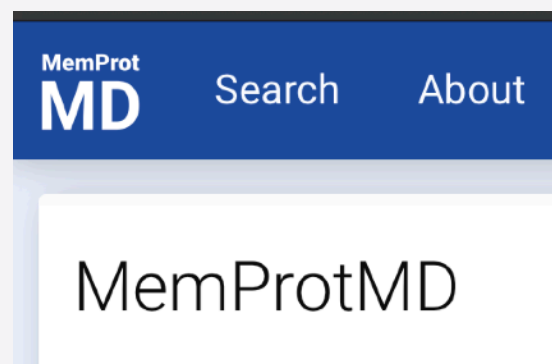
# WHO ARE WE ?

---



# WHAT HAVE WE DONE ?

---



## Open Force Field Initiative

An open source, open science, and open data approach to better force fields



## The NMRlipids project



# HOW THIS WORKSHOP WILL WORK

---

# HOW THIS WORKSHOP WILL WORK

---

## **Discuss**

(no computing devices during the sessions  
- except for taking notes or for tweeting)

# HOW THIS WORKSHOP WILL WORK

---

## **Discuss**

(no computing devices during the sessions  
- except for taking notes or for tweeting)

## **Disseminate**

(Twitter: #SDMS18 , recordings)

# HOW THIS WORKSHOP WILL WORK

---

## **Discuss**

(no computing devices during the sessions  
- except for taking notes or for tweeting)

## **Disseminate**

(Twitter: #SDMS18 , recordings)

## **Few more things ...**

(Mikeal and Reba)