

Academic Hospitals

Andrea Reyes Elizondo

RISIS COURSE – Universities, research organizations and rankings

28 June 2017

CWTS, Leiden



Universiteit
Leiden

University hospitals

- Different national systems → different level of task integration and collaboration
 - A. Full education and research integration between academic hospital & university
 - B. Support in continuous education and internships, clinical practices
 - C. In-between



The mammals of Australia. by John Gould. (1845–1863) Volume 1, Plate 1

Challenges in identification

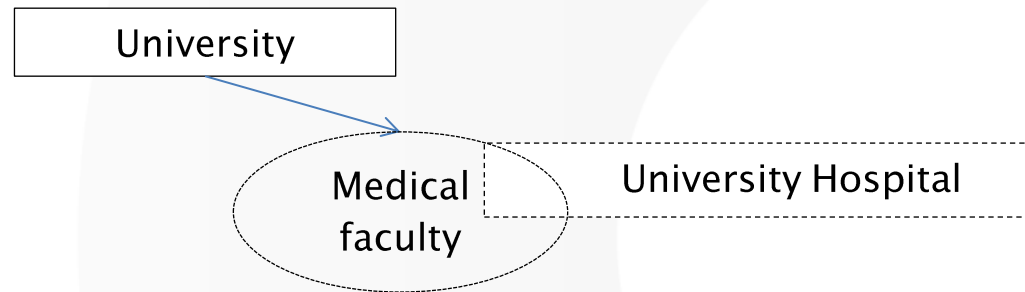
- Differences in definitions of organisations
 - Subunits
 - organisations as perceived <–> legal entities
- Demographic events
 - affiliated institutions
 - publication year linking to timing demographic events
- CWTS database – record of relationships
 - Associated
 - Component
 - Joint (component)

Types of relationships (CWTS)

- Affiliation
 - Associated
 - Autonomous institution that collaborates with one or more universities based on a joint purpose while having separate missions and tasks
 - Loosely connected
 - Component
 - Affiliated institution is actually part of or controlled by the university
 - Very closely connected
 - Joint
 - Identical to a component but administered by more than one organization

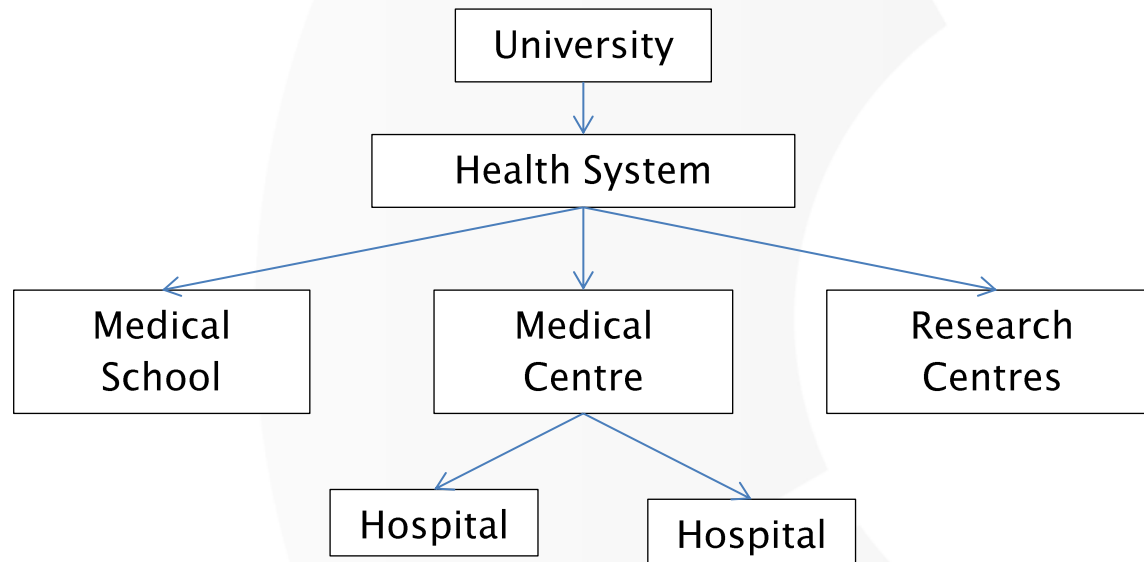
Example 1 – full integration

- The Netherlands, Belgium, some academic hospitals in Germany



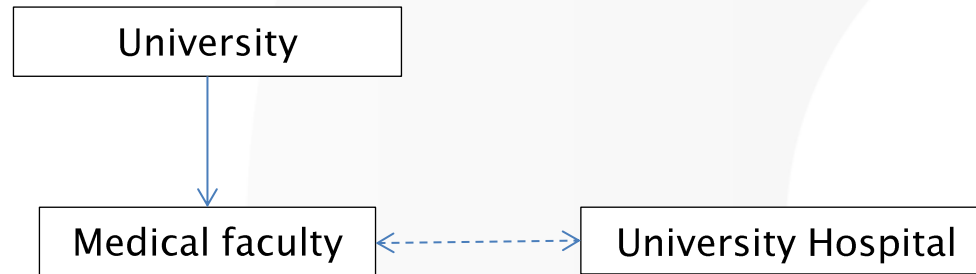
Example 2 – Health Science Centres

- Some cases in the United States of America, South Korea

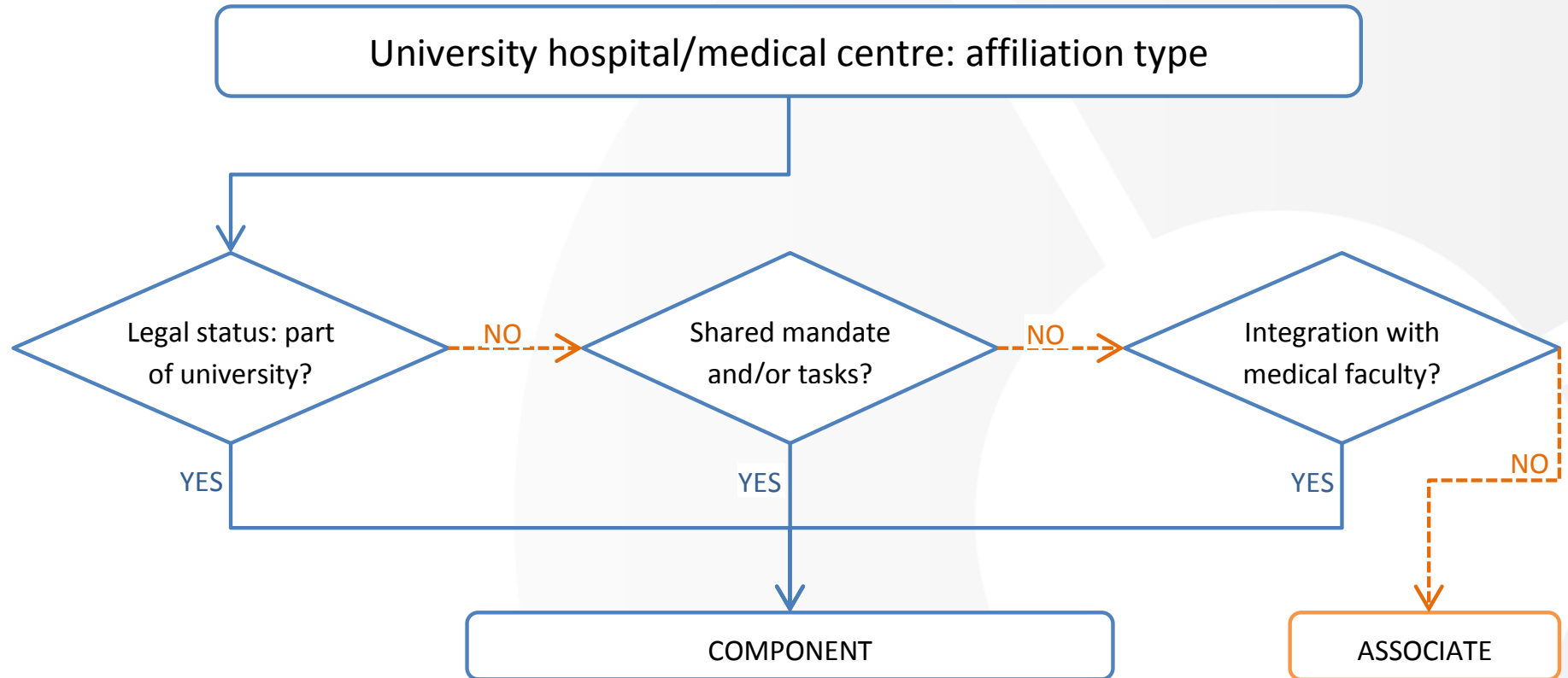


Example 3 – collaboration & support

- Some cases in the United States of America, private hospitals in Germany, other countries



Defining the type of affiliation



Case Study 1

University of Oslo / Oslo University Hospital

- Legal status – under South–East Regional Health Authority (Helse Sør–Øst)/National Health Authority
- Mandate to support research and education. Core curriculum? –> unclear
- Integration with medical faculty
 - Half of authors sampled that publish for hospital hold a university position
 - Publication assignation – almost half is mixed; authors with sole university position assign to hospital
 - Medical faculty shares locations with hospital
- Type of affiliation = component

Case Study 2

Universidad Autónoma de Madrid / Hospital Universitario La Paz

- Legal status –under the Community of Madrid
- Mandate to support research and education (nursing, clinical practices, specialist education, training courses)
- Integration with medical faculty
 - 1/4 of authors sampled hold a university position
 - Publication assignation – solely to hospital
 - Medical faculty does not share locations with hospital; considers it teaching unit for clinical practices.
- Type of affiliation = associate

Case Study 3

Pierre and Marie Curie University (UPMC) / Hôpital Universitaire de La Pitié Salpêtrière

- Legal entity – under Assistance Publique–Hôpitaux de Paris
- Education and research activities with UPMC, Inserm, and CNRS. Core curriculum? –> unclear
- Integration with medical faculty
 - Less than 1/10 of authors sampled that publish for hospital hold a university position.
 - Publication assignation – papers assigned solely to hospital, 1 case with other institutions.
 - Medical faculty divided between former medical faculties of Pitié Salpêtrière, Saint-Antoine, and Broussais Hôtel Dieu hospitals.
- Type of affiliation = associate

Case Study 4

Justus Liebig University Giessen & Philipps-Universität Marburg / Universitätsklinikum Gießen und Marburg

- Legal status – privatised, legal entity on its own
- Education and research activities are now responsibility of each university
- Integration with medical faculty
 - University position – Giessen (0 solely univ; majority hospital). Marburg Giessen (0 solely univ; majority hospital).
 - Publication assignation – For both universities, assignation to hospital is well above 80%.
 - Shared locations – Medical faculty in university (Giessen), two departments and some labs shared with hospital (Marburg)
- Type of affiliation = associate

Case Study 5

University of Aberdeen / Aberdeen Maternity Hospital

- Legal status – falls under NHS Grampian
- No specific mandate for education and research. Works closely with Univ Aberdeen on research, workforce planning, and training.
- Integration with medical faculty
 - University position – not enough information available from all authors
 - Publication assignation – solely to hospital.
 - Shared locations – The MacGillivray Academic Centre of the College of Life Sciences and Medicine is in maternity hospital
- Type of affiliation = component

Effect of affiliation status on publication output counts*

| University | Affiliated Institute | Assoc | Comp | Diff |
|--------------------|----------------------------|--------|--------|------|
| University of Oslo | Oslo University Hospitals | 13,433 | 13,829 | 3% |
| U Autonom Madrid | La Paz University Hospital | 9,723 | 11,424 | 17% |
| P and M Curie Univ | Gr Hosp Pitié-Salpêtrière | 23,628 | 25,583 | 8% |
| University Giessen | U Hosp Giessen Marburg | 5,824 | 6,975 | 20% |
| Univ Marburg | U Hosp Giessen Marburg | 5,492 | 6,595 | 20% |
| Univ Aberdeen | Aberdeen Maternity Hosp | 6,323 | 6,334 | 0% |

* articles, reviews and letters 2011–2014, full counting scheme

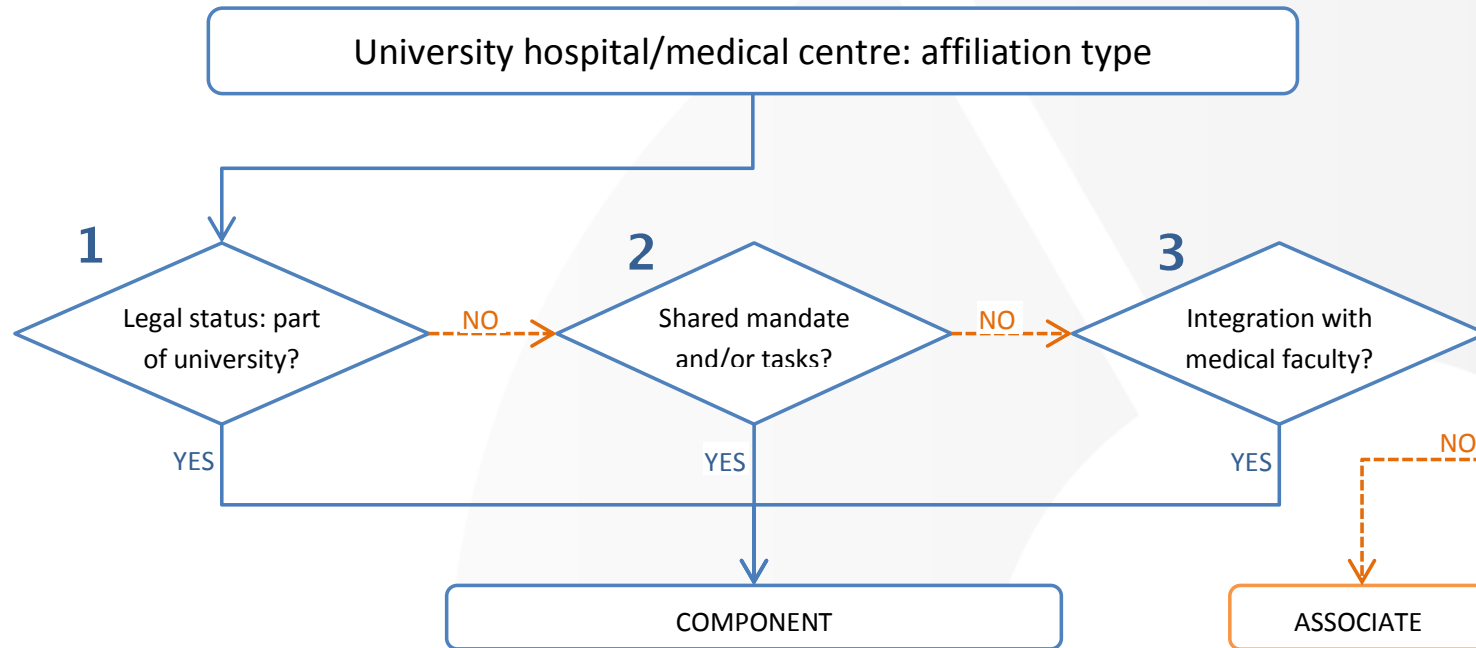
Relationship between university & hospital



Exercise

- Establish the type of relationship between the University of Zurich and three hospitals:
 - University Hospital Zurich
 - University Children's Hospital Zurich
 - Balgrist University Hospital

Exercise – decision flowchart



1. Legal status of hospital
2. Mandate of hospital (on education)
3. Integration of medical faculty:
 - Shared locations?
 - Publication assignment?
 - Researcher affiliation