

Research Portal for Secure Data Discovery, Access and Collaboration



ONTARIO
BRAIN
INSTITUTE INSTITUT
ONTARIEN
DU CERVEAU

Converge. Discover. Deliver | Mobiliser. Découvrir. Produire



What we do

We accelerate discovery and innovation to benefit patients and the economy, today and for generations to come.

How we do it

We are pioneering a “team science” approach that brings together researchers, clinicians, industry, patients, and their advocates to foster discovery and deliver innovative products and services that improve the lives of those living with brain disorders.



ONTARIO
BRAIN
INSTITUTE

INSTITUT
ONTARIEN
DU CERVEAU

Integrated Discovery Programs (IDPs)



CP-NET
Childhood Cerebral Palsy
Neuroscience Discovery Network

CEREBRAL PALSY



EPLINK
THE OBI EPILEPSY PROJECT
EPILEPSY



POND NETWORK
Province of Ontario Neurodevelopmental Disorders

**NEURODEVELOPMENTAL
DISORDERS**



CAN-BIND
DEPRESSION



ONDRI
**NEURODEGENERATIVE
DISEASES**

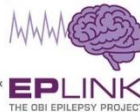


Data Opportunities Arise From Collaboration

Data Modalities	Neuroimaging	Cerebral Palsy	Epilepsy	Neurodevelopmental Disorders	Neurodegeneration	Depression	Other Brain Disorders
	Clinical						
	Genomics						
	Proteomics						
	Other						



CP-NET
Childhood Cerebral Palsy
Neuroscience Discovery Network



EPLINK
THE OBI EPILEPSY PROJECT



POND
network



ONDRI



CAN-BIND



ONTARIO
BRAIN
INSTITUTE

INSTITUT
ONTARIEN
DU CERVEAU

Brain-CODE: Powering a network of research

5 Integrated Discovery Programs Sharing Data

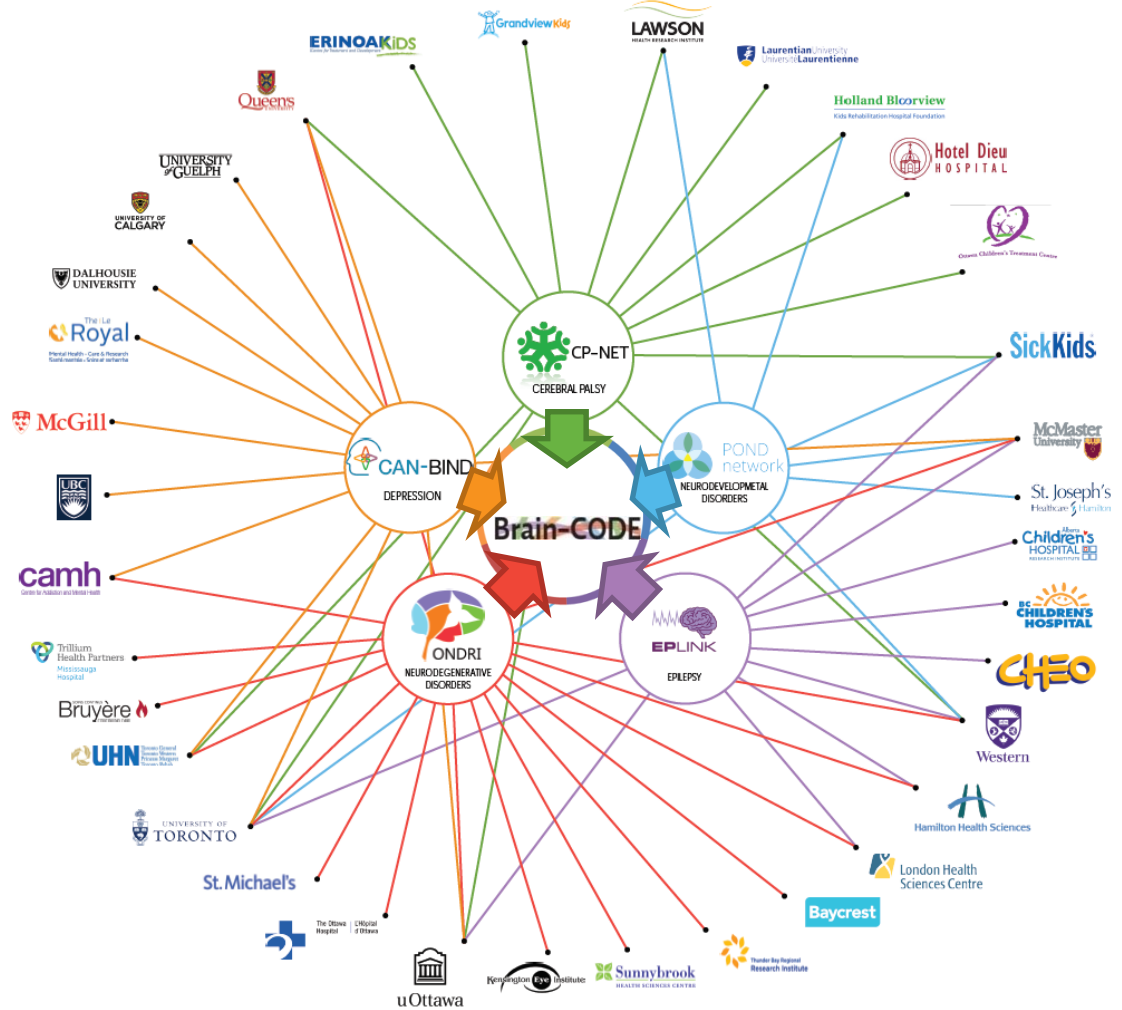
40+ Institutions

600+ Brain-CODE Users

Standardized Datasets

Federation and Linking

HPC Analytics





ONTARIO
BRAIN
INSTITUTE INSTITUT
ONTARIEN
DU CERVEAU

Brain-CODE

indoc
CONSORTIUM

indoc
RESEARCH

Baycrest
Rotman Research Institute

Electronic
Health
Information
Laboratory

Centre for
Advanced
Computing



- Canadian Open Neuroscience Platform (CONP)
- Partnership of 15 universities to advance treatments for Canadians suffering from neurological diseases
- FAIR principles are key components of CONP



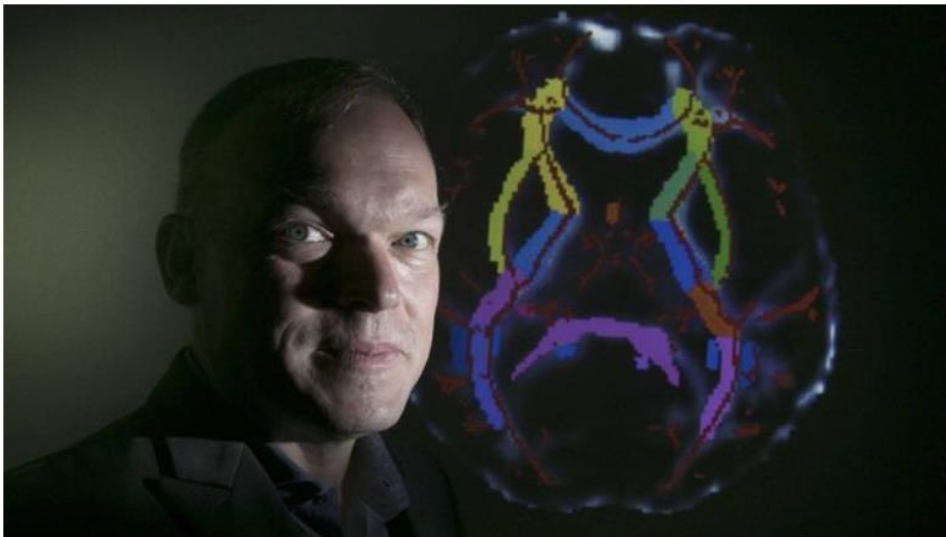
- Member of Canadian Node of the International Neuroinformatics Coordinating Facility (INCF)
- Endorse and support community standards and best practices for global neuroscience, which comply with the FAIR principles



ONTARIO
BRAIN
INSTITUTE INSTITUT
ONTARIEN
DU CERVEAU

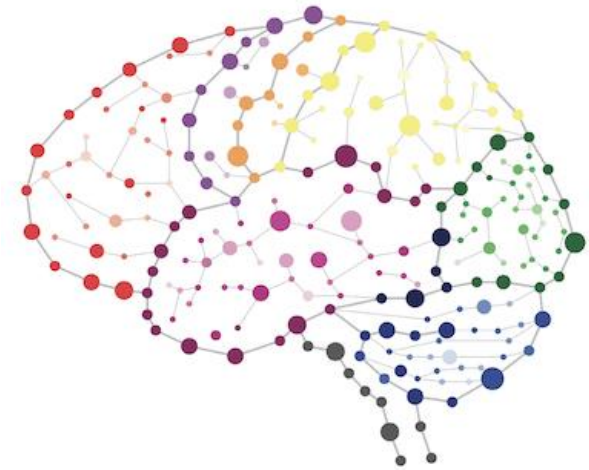
camh
Centre for Addiction and Mental Health

CAMH donation gives mental health scientists a chance to harness data with artificial intelligence



Sean Hill, the inaugural director of the Krembil Centre for Neuroinformatics at CAMH in Toronto, poses along with an image of a brain scan in his Toronto office on August 30, 2017.

GLENN LOWSON/THE GLOBE AND MAIL



**Krembil Centre for
Neuroinformatics**

- Brain-CODE architecture adopted by Krembil Centre for Neuroinformatics at Centre for Addiction and Mental Health (CAMH) in 2017



ONTARIO
BRAIN
INSTITUTE INSTITUT
ONTARIEN
DU CERVEAU

Brain-CODE



canarie

camh

Centre for Addiction and Mental Health

indoc
RESEARCH

The Le
Royal

St. Joseph's
Healthcare  Hamilton