

A stylized outline of a world map, rendered in light blue and orange lines, serves as a background for the text.

World Data System

Trustworthy Data Services for
Global Science

A Brief History...

- International Association of Academies (IAA)
established in 1899
- International Council for Science (ICSU)
established in 1931
 - Mission: Strengthen international science for the benefit of society



A Brief History...



International
Science Council

ABOUT US

WHAT WE DO

PUBLICATIONS

CURRENT

EVENTS

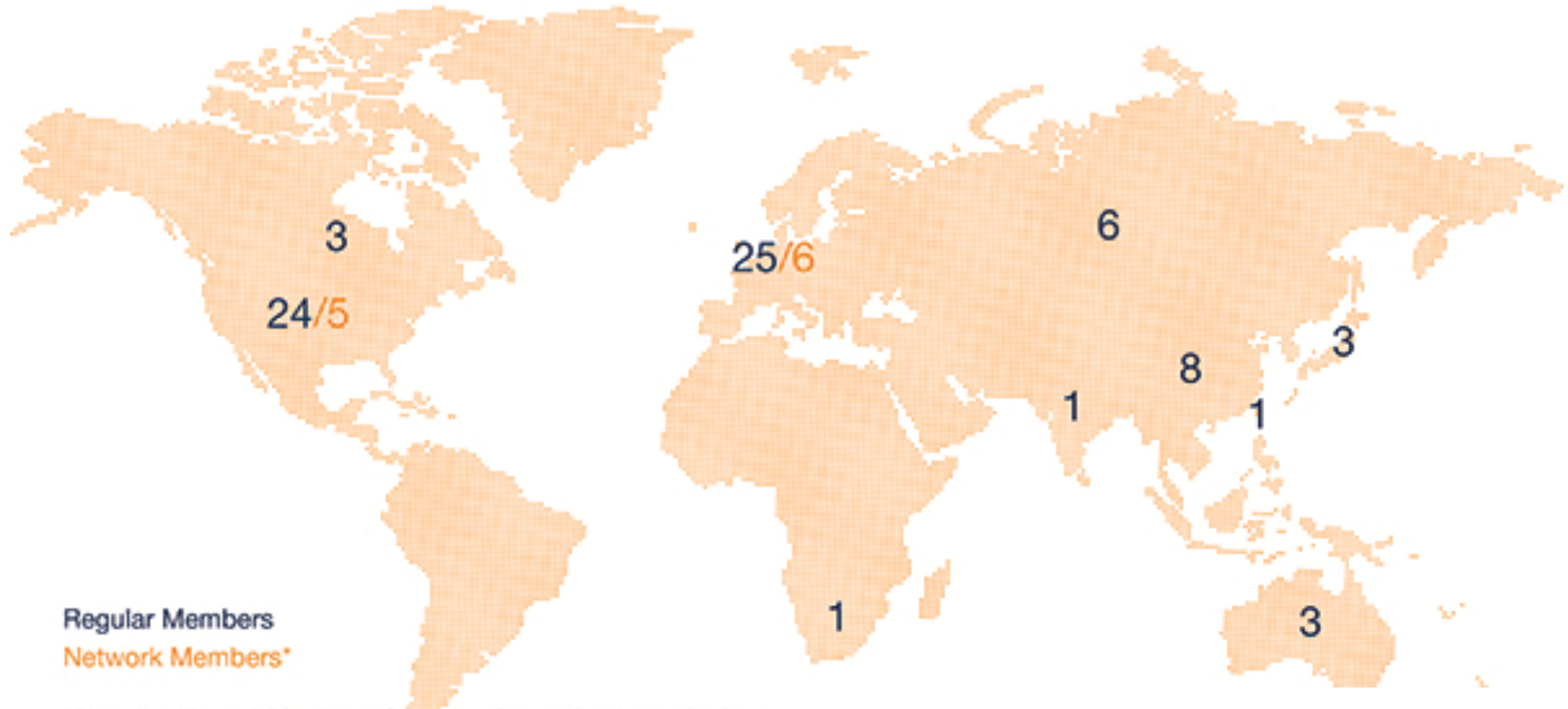


In July 2018, we launched
the global voice for science.
Watch the video here:



WDS Now

WDS Regular and Network Members (10/2018)



Regular Members
Network Members*

* Note that Network Members often act as international organizations. Only the location of the Member's secretariat is shown here, and WDS coverage extends to regions not marked.

WDS Now

Strategic Targets



OECD publishing

BUSINESS MODELS FOR SUSTAINABLE RESEARCH DATA REPOSITORIES

OECD SCIENCE, TECHNOLOGY
AND INNOVATION
POLICY PAPERS
December 2017 No. 47

gain digital



1. Improve the **trust in** and **quality** of open Scientific Data Services
2. Ensure long term data **stewardship**
3. Make trusted data services an integral part of **international collaborative scientific research**

SCHOLIX



ISC World Data System International Technology Office

Dr. Karen Payne | 24 January 2019

National Data Services Framework Summit, Ottawa

ORIGINS

- 2016 Vision of ITO: to Support development of Global Research Data Infrastructure (GRDI), previously done pro bono by members
- 2017 Awarded to Ocean Networks Canada, NRC's Canadian Astronomy Data Centre, and the University of Waterloo's Canadian Cryospheric Information Network/Polar Data Catalogue



**International
Science Council**

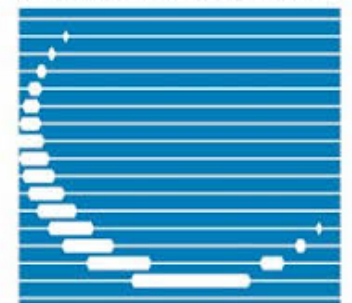


ICSU

WORLD DATA SYSTEM

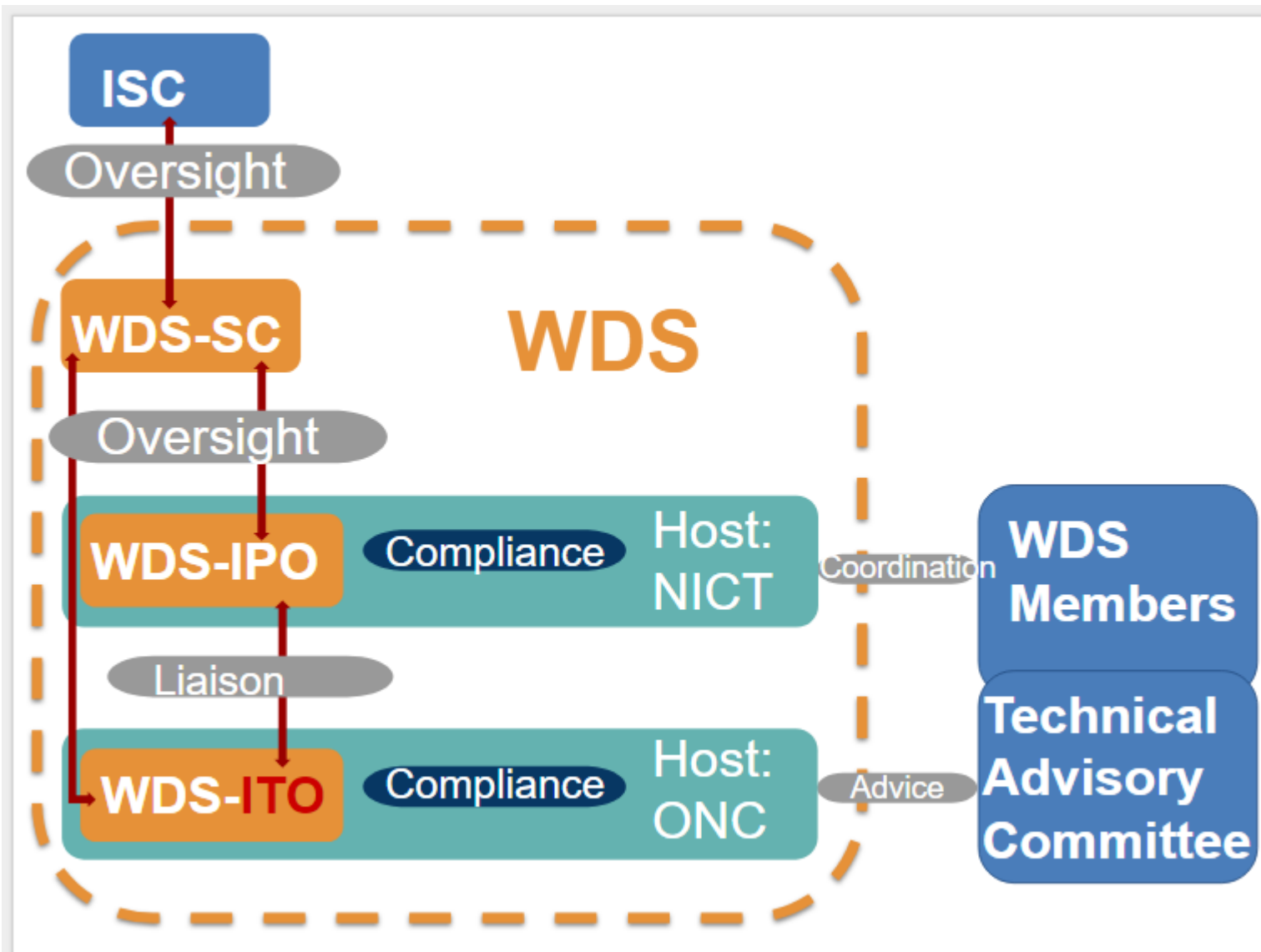


CADC/CCDA

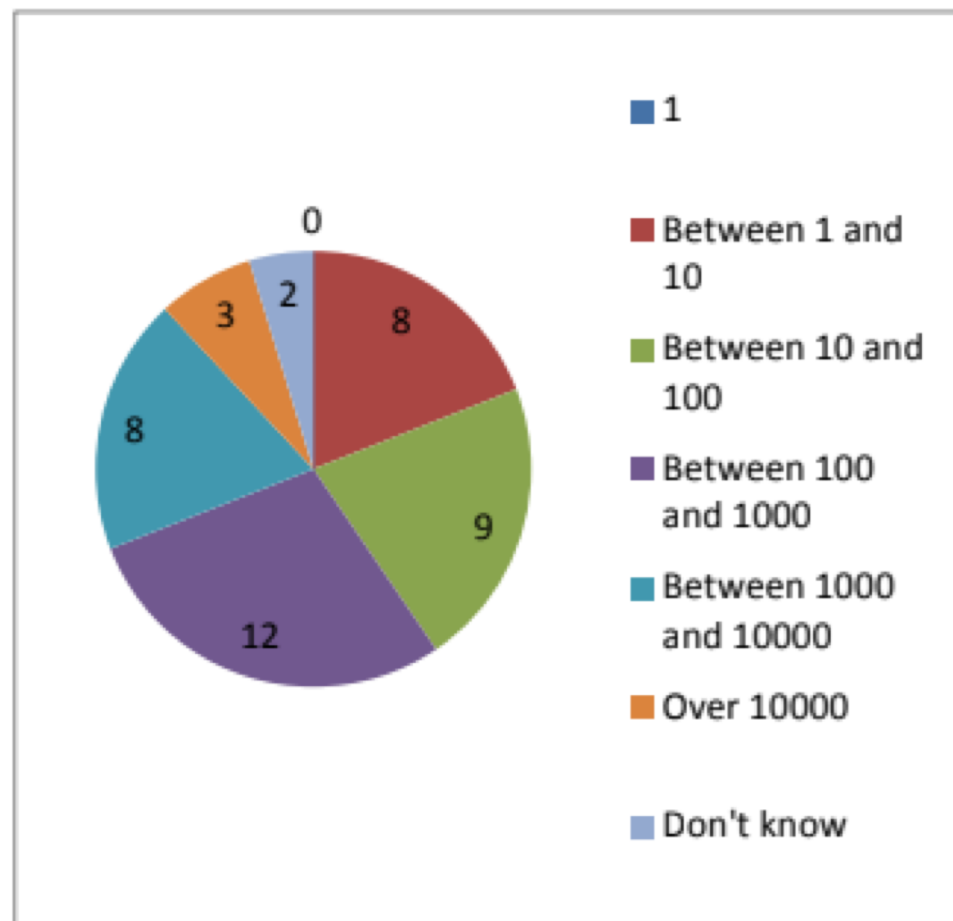


NRC · CNRC Canada





Approximately how many openly available datasets are included in your Organization's metadata catalogue?



1	0	0%
Between 1 and 10	8	19%
Between 10 and 100	9	21%
Between 100 and 1000	12	29%
Between 1000 and 10000	8	19%
Over 10000	3	7%
Don't know	2	5%

