

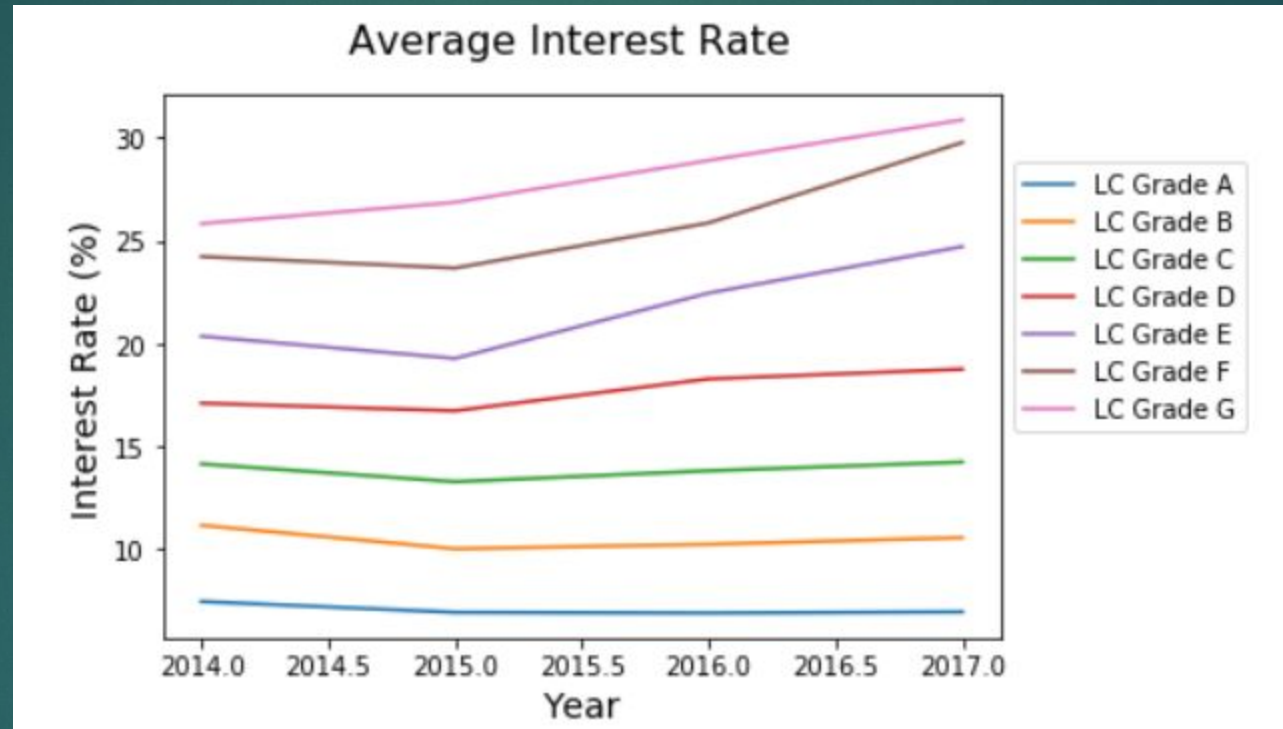


# Evaluating Performing and Non-Performing Loans at Lending Club

DEBORAH MICAEL

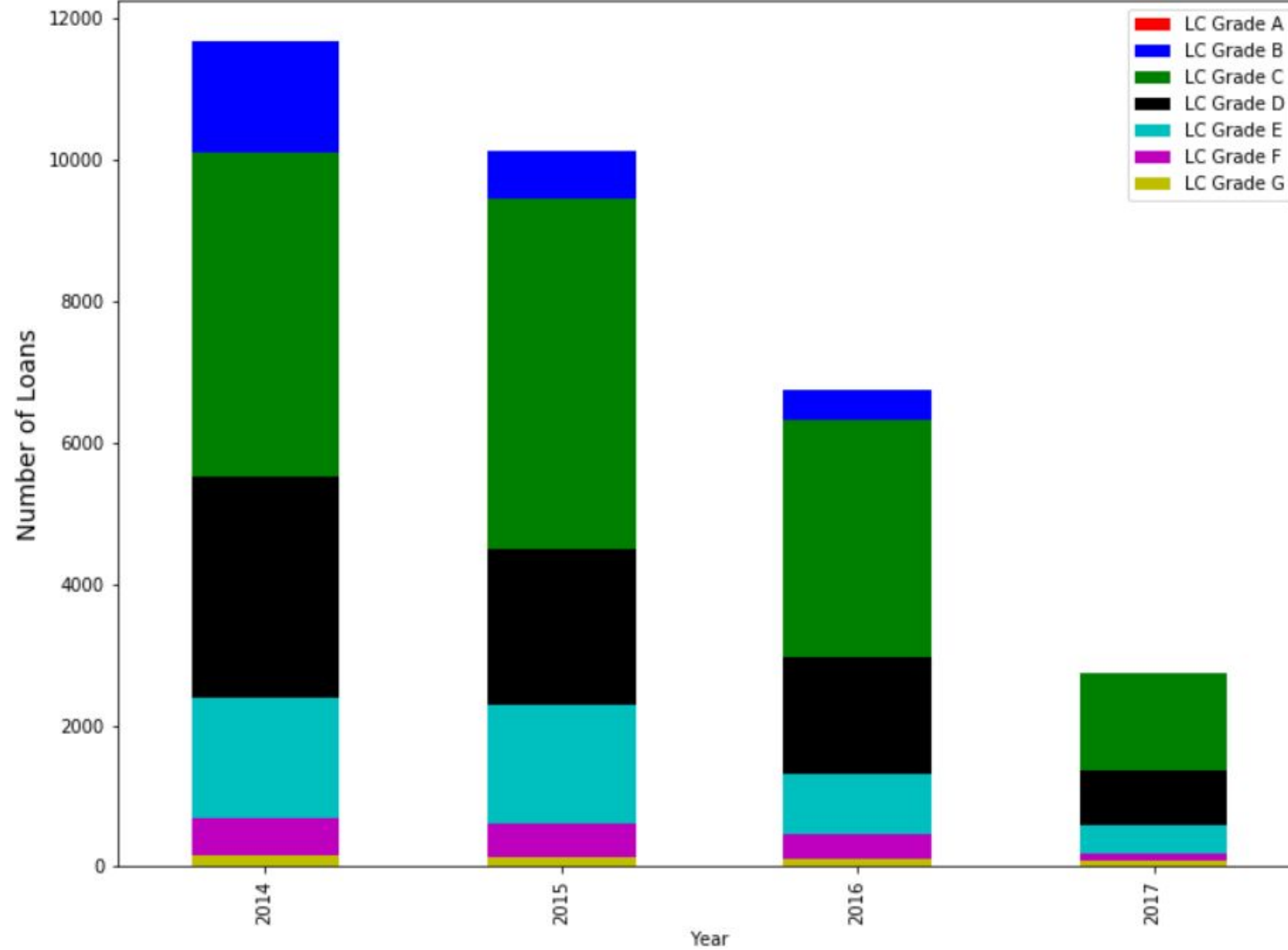
# Introduction

- ▶ I will be analyzing 6 loan variants in Northeastern states from 2014-2017. They are fully paid, current, charged off, late, default, and in grace period loans. Current loans are defined as having one or more payments completed and no payments past due. It also means that this loan still has one or more scheduled future payments. Defaulted loans have one or more payments that are overdue for over 90 days. After debt collection agencies completed their task and no further action to the loan can be done, then the loan is considered 'charged off'. Loans are considered late when one or more payments of a loan are overdue within 3-31 days or 31-91 days. In grace period indicates a loan has become due.
- ▶ I will also provide correlations and relevant predictions from my analysis.
- ▶ Source of Data: All Lending Club Data from Kaggle

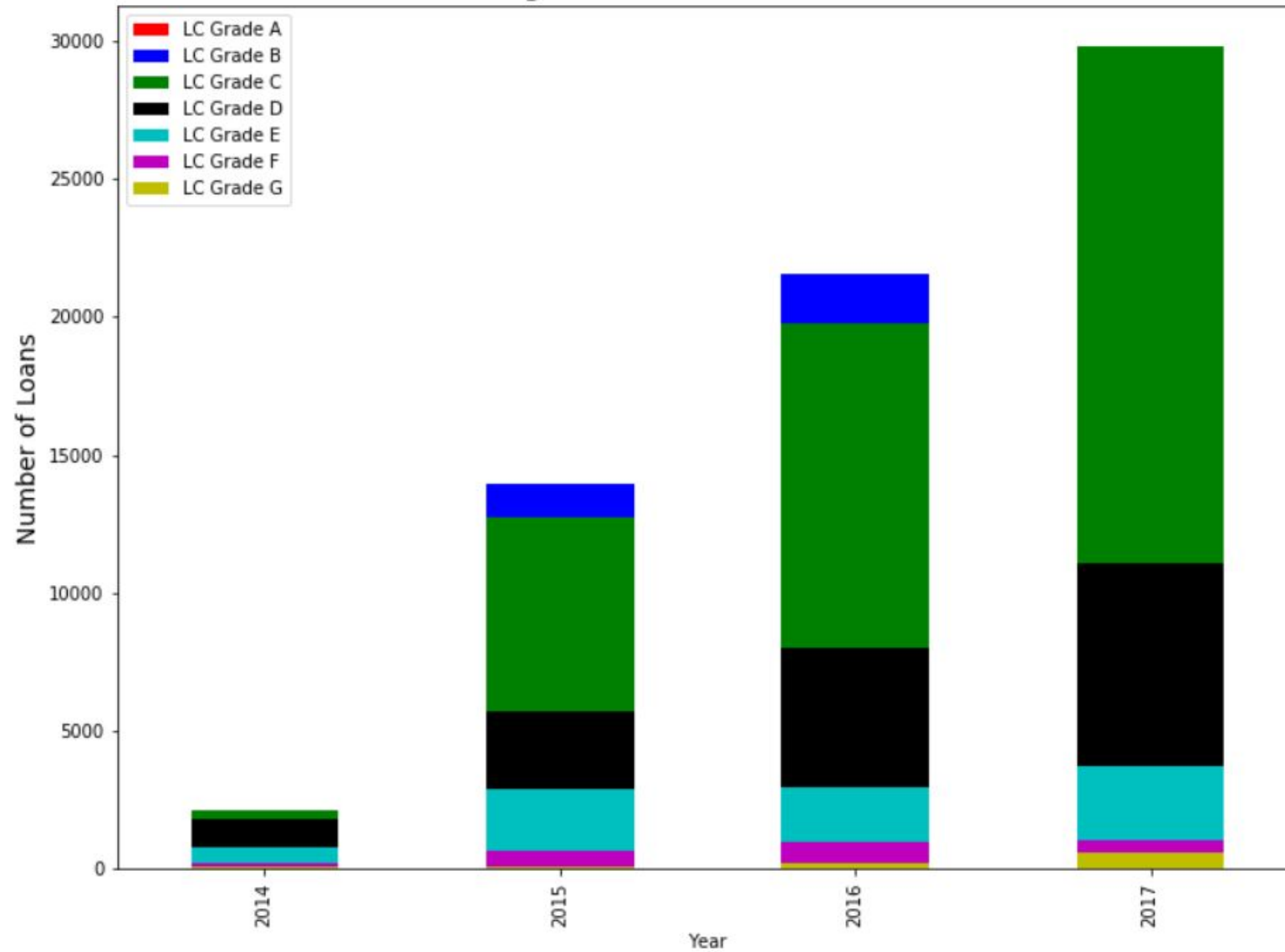


Average Interest Rate is negatively correlated with Lending Club assigned grades especially for grades A-D.

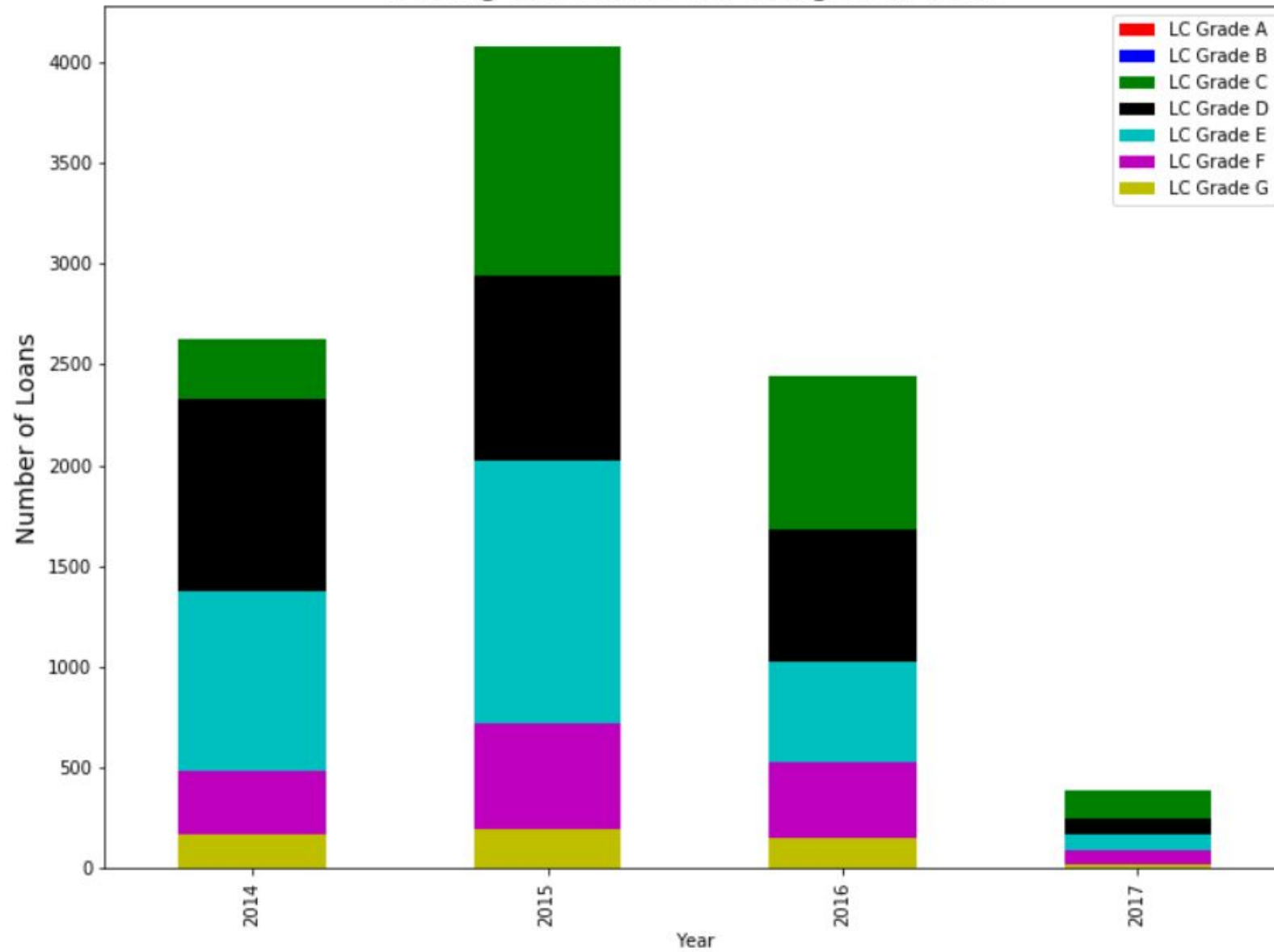
### Lending Club Grades For Fully Paid Loans



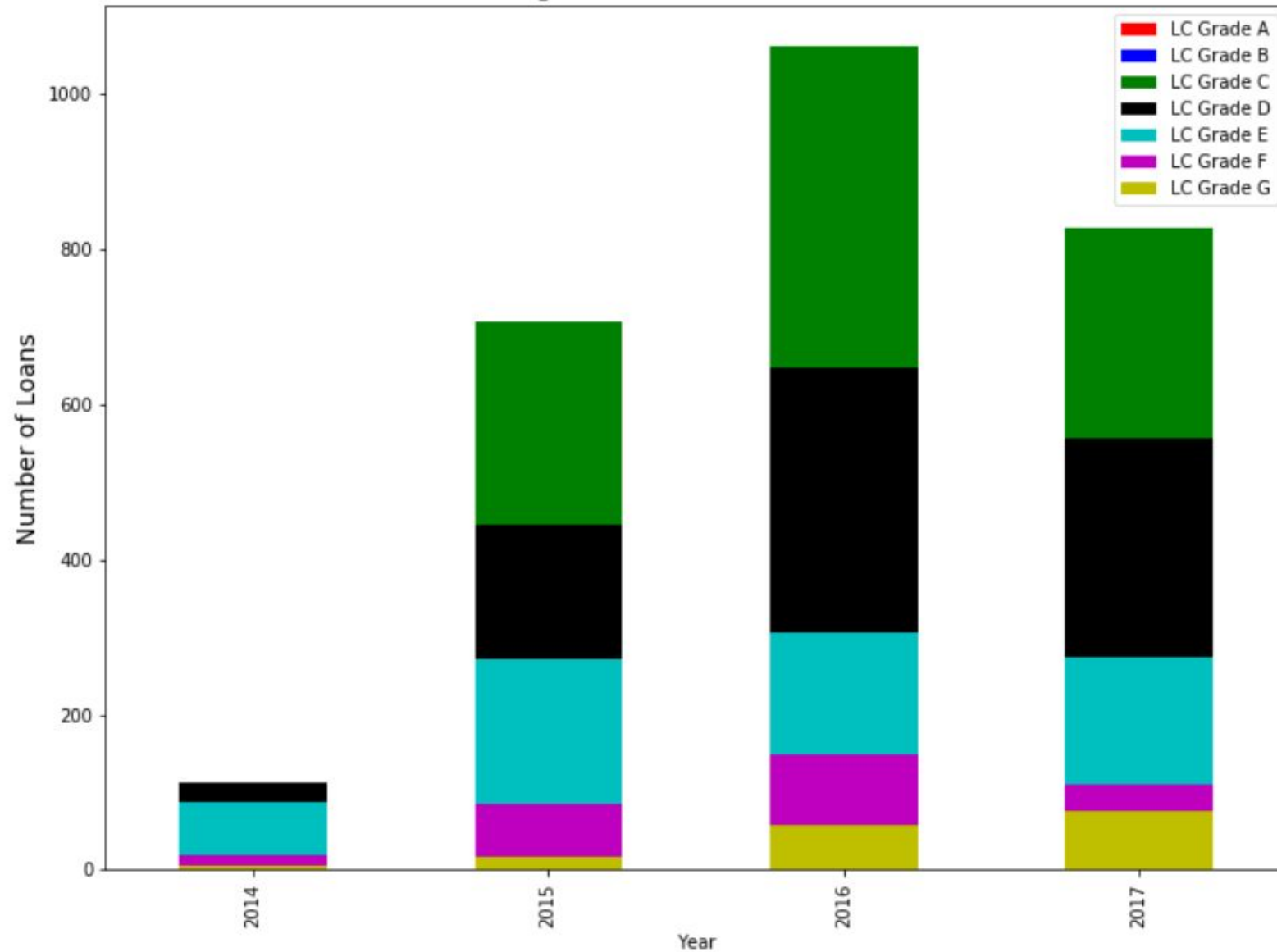
### Lending Club Grades For Current Loans



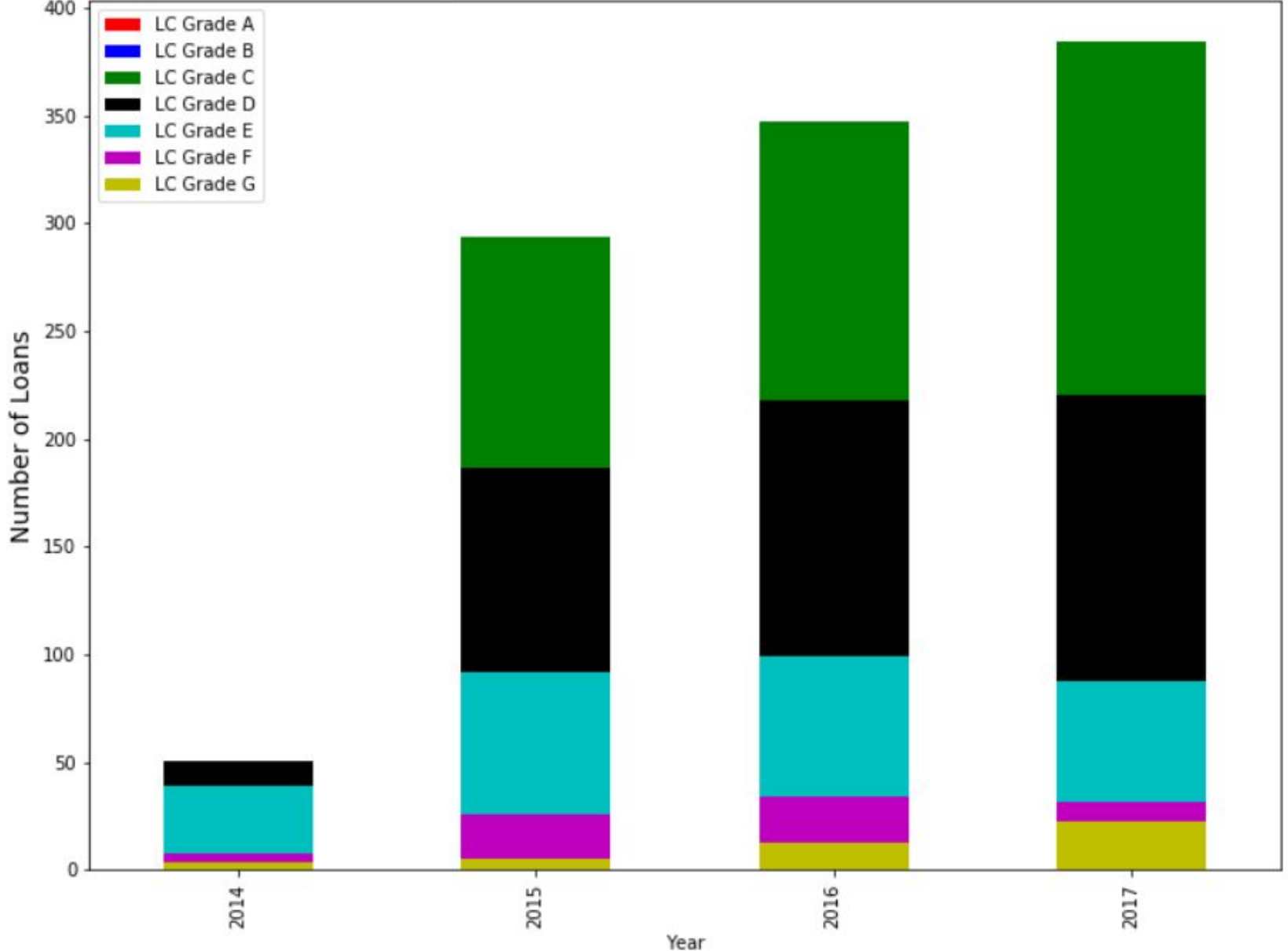
### Lending Club Grades For Charged Off Loans



### Lending Club Grades For Late Loans

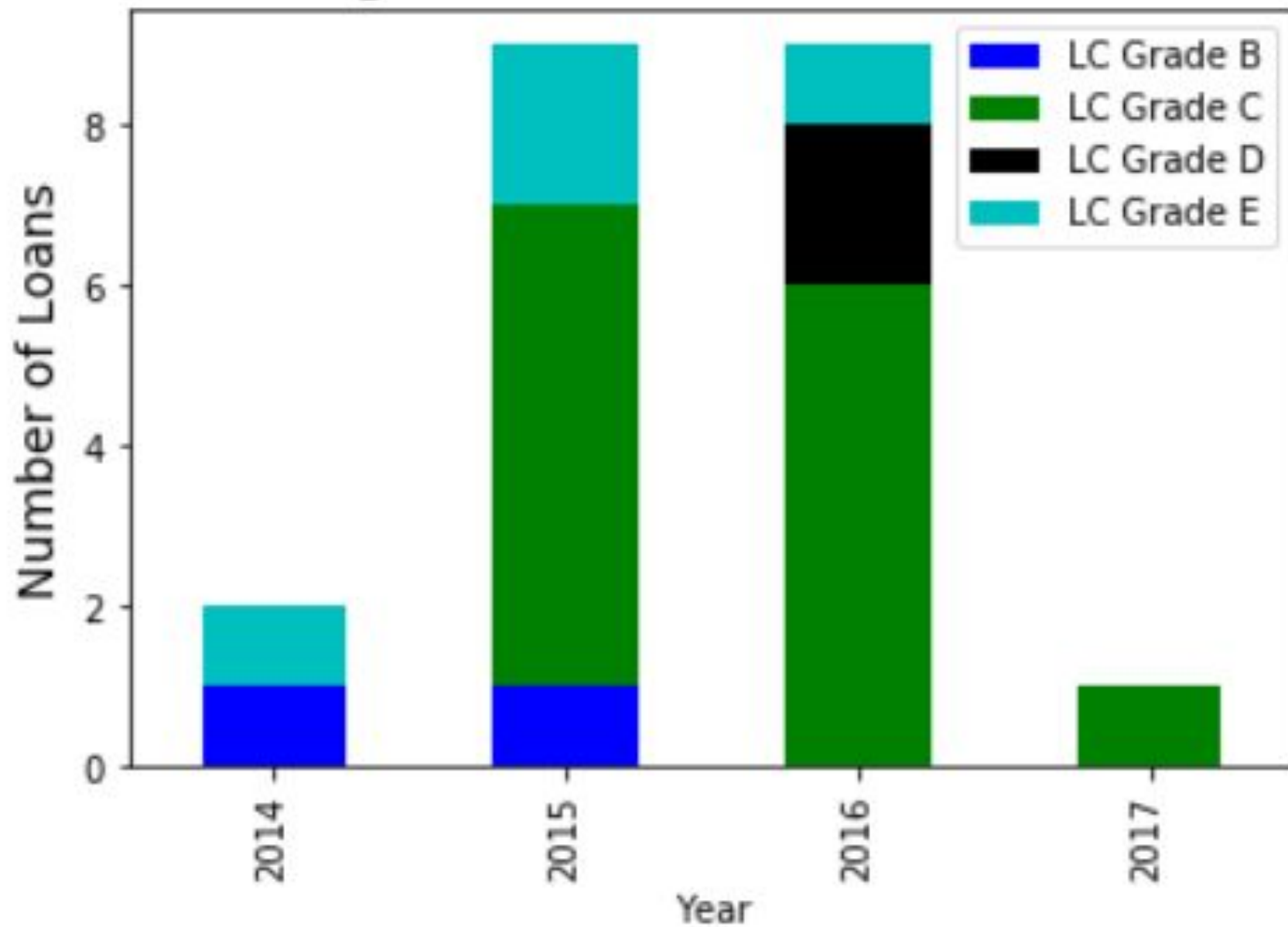



Lending Club Grades For In Grace Period Loans

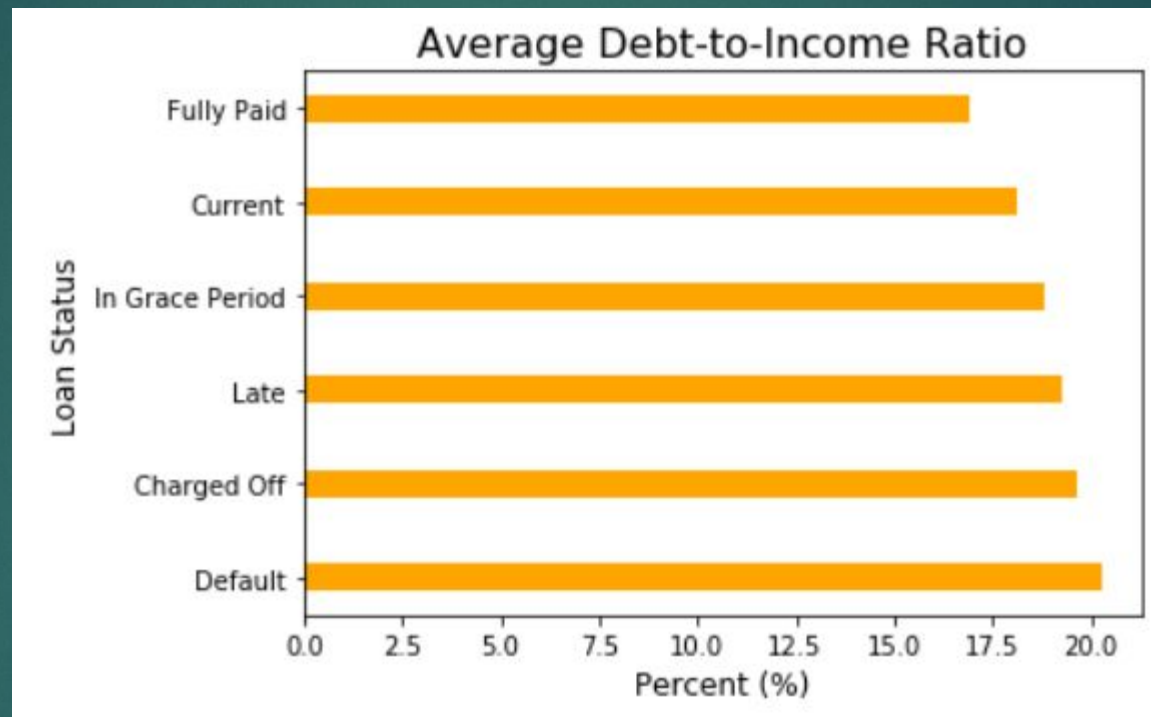




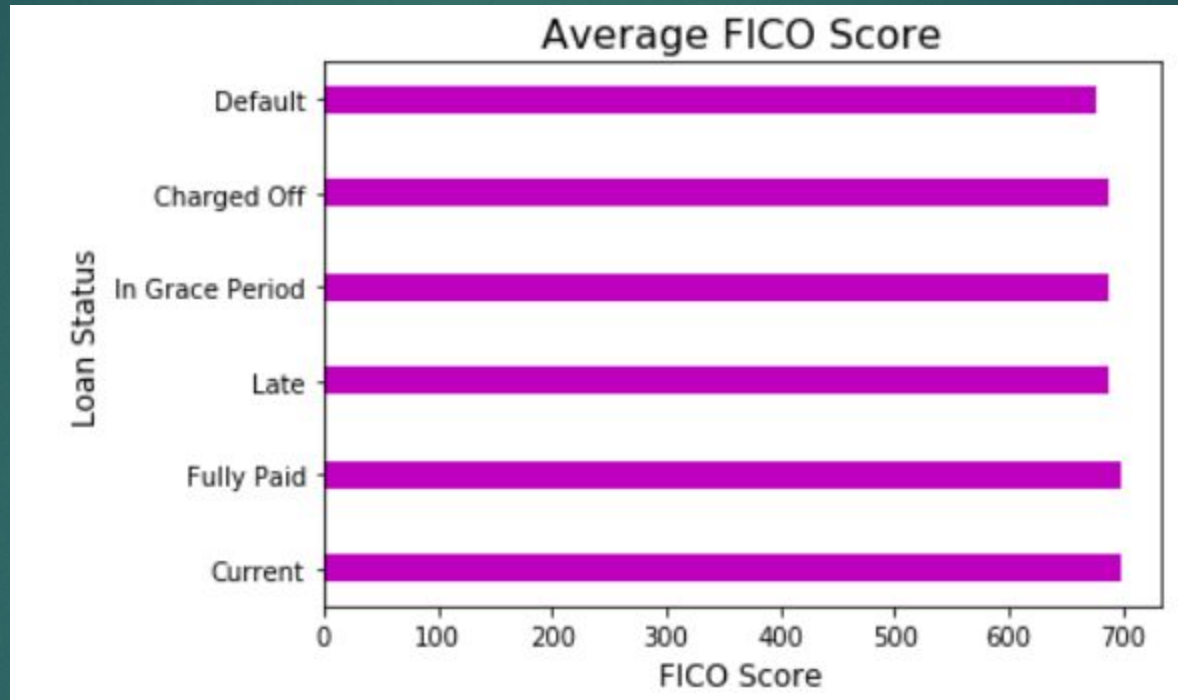
## Lending Club Grades For Default Loans



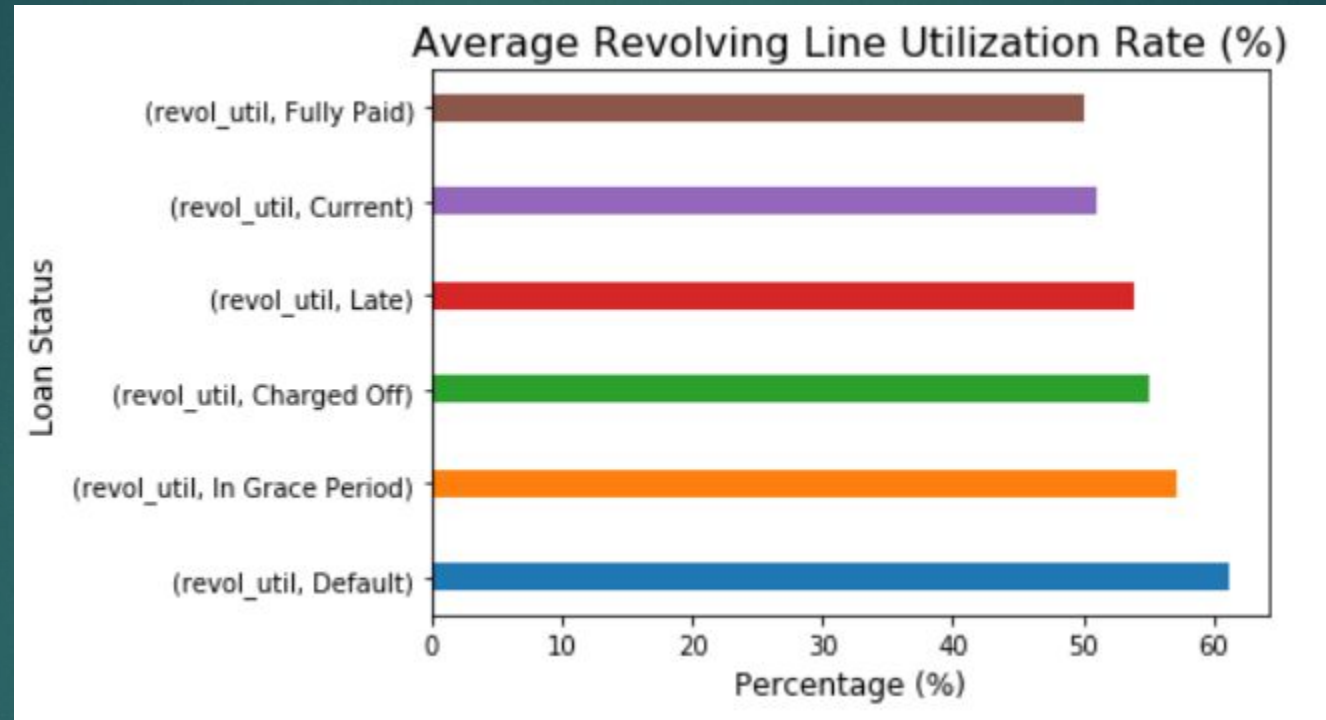
- 
- ▶ Most of the fully paid and current loans are grade C. Current and fully paid loans have a higher distribution of better grades. In fact, charged off, in grace period, and late loans never had a portion of As or Bs.
  - ▶ Fully paid loans have decreased drastically largely due to the significant increase of current loans. I predict this will continue to occur in the future.
  - ▶ Most of the charged off loans started off with grades D&E and ended with a more even distribution of grades C-F.
  - ▶ Most of the late loans are grades C-E. Most of the in grace period loans are grades C&D.
  - ▶ Surprisingly, default loans have the smallest number of loan variants in single digits. Initially, the default loans were grade B and E loans and then the grade C loans become predominant since 2015.



Default and charged off loans have the highest dti while fully paid and current loans have the lowest which validates my literature review. Good status loans are associated with lower dti and vice versa.

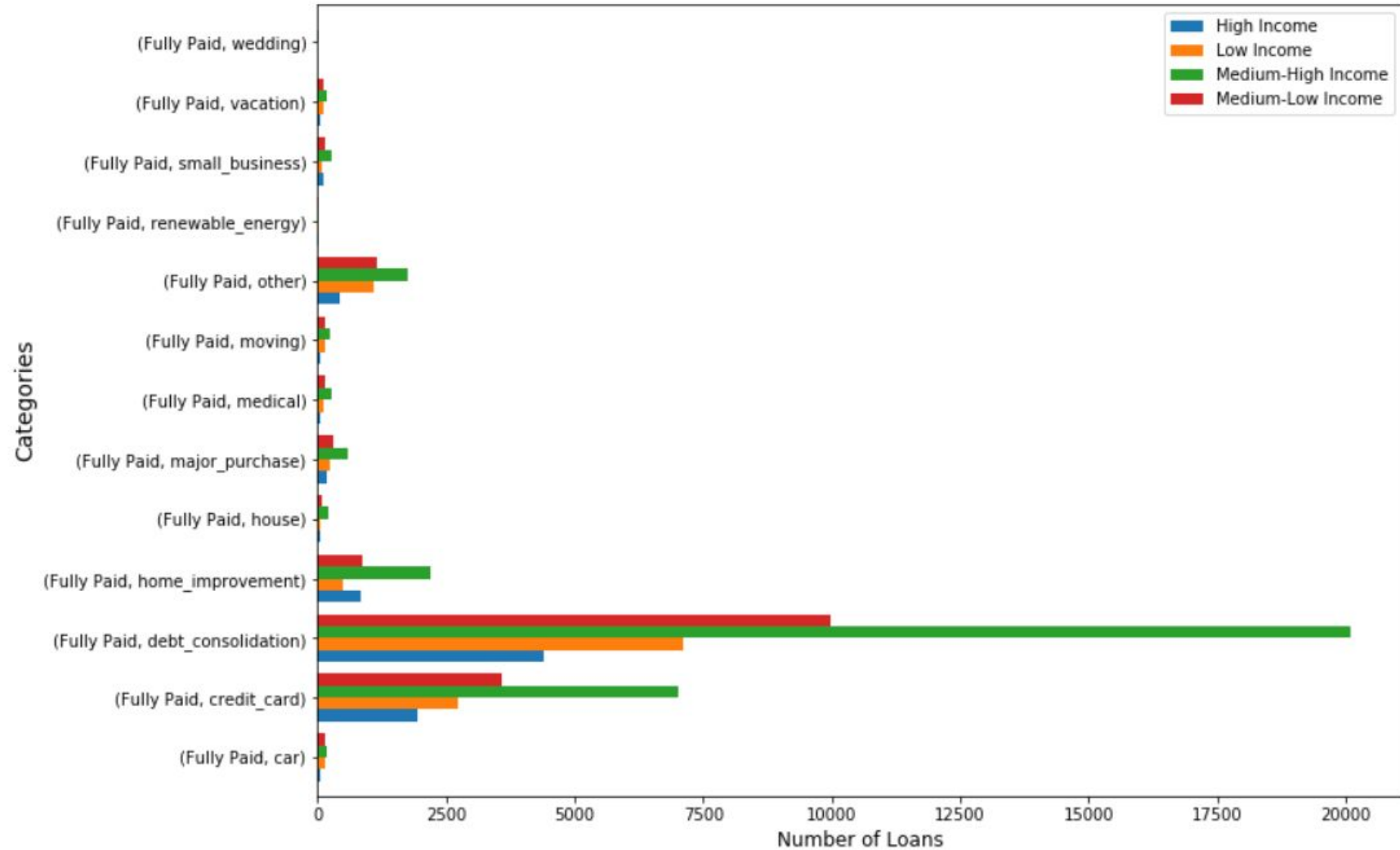


Lending Club offered no loans for poor FICO scores during this time period. Default and charged off loans have the lowest average FICO score while fully paid and current loans have the highest.

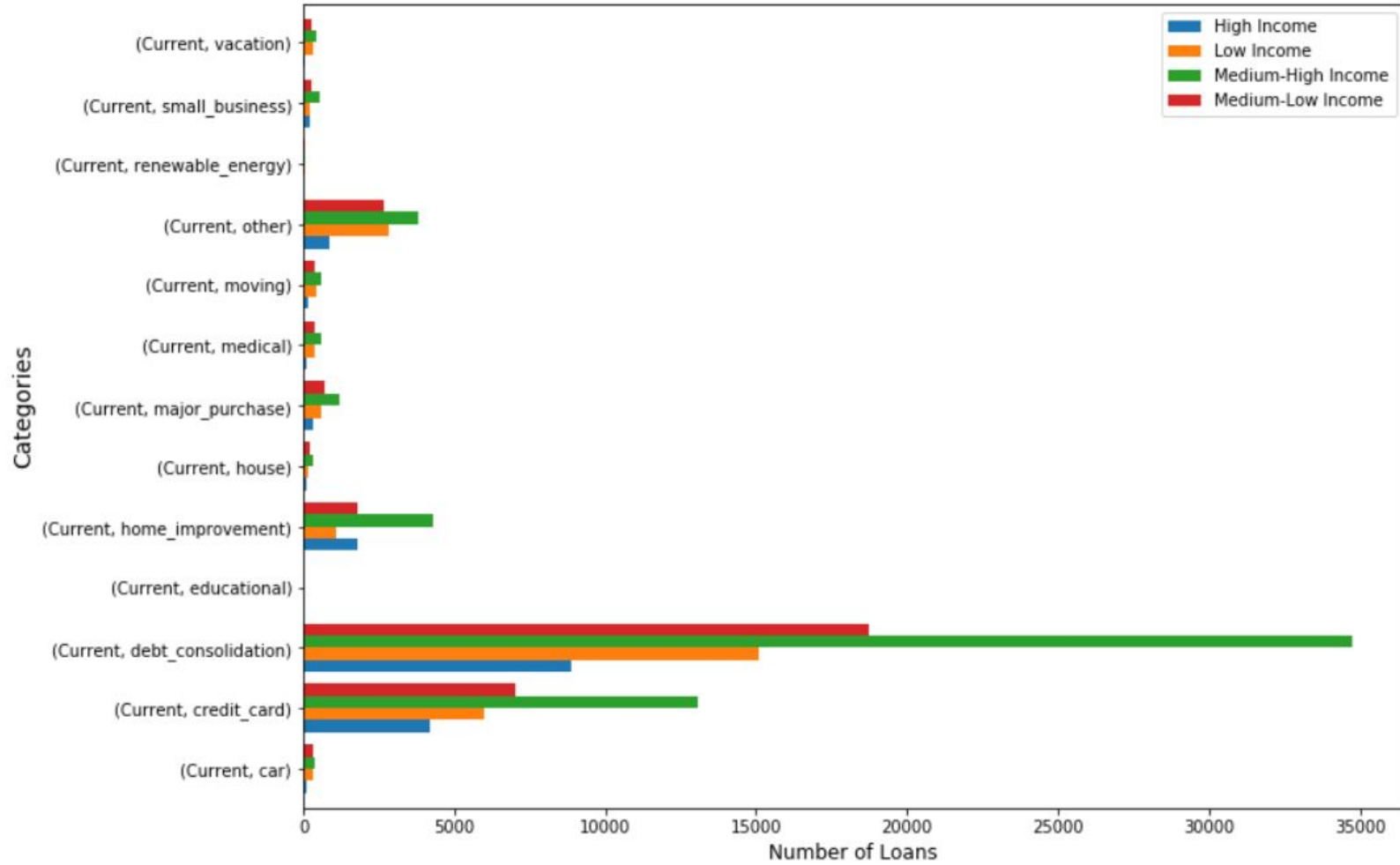


Default and in grace period loans have the highest credit utilization while fully paid and current loans have the lowest which validates my literature review. Good status loans are associated with lower revolving utilization and vice versa.

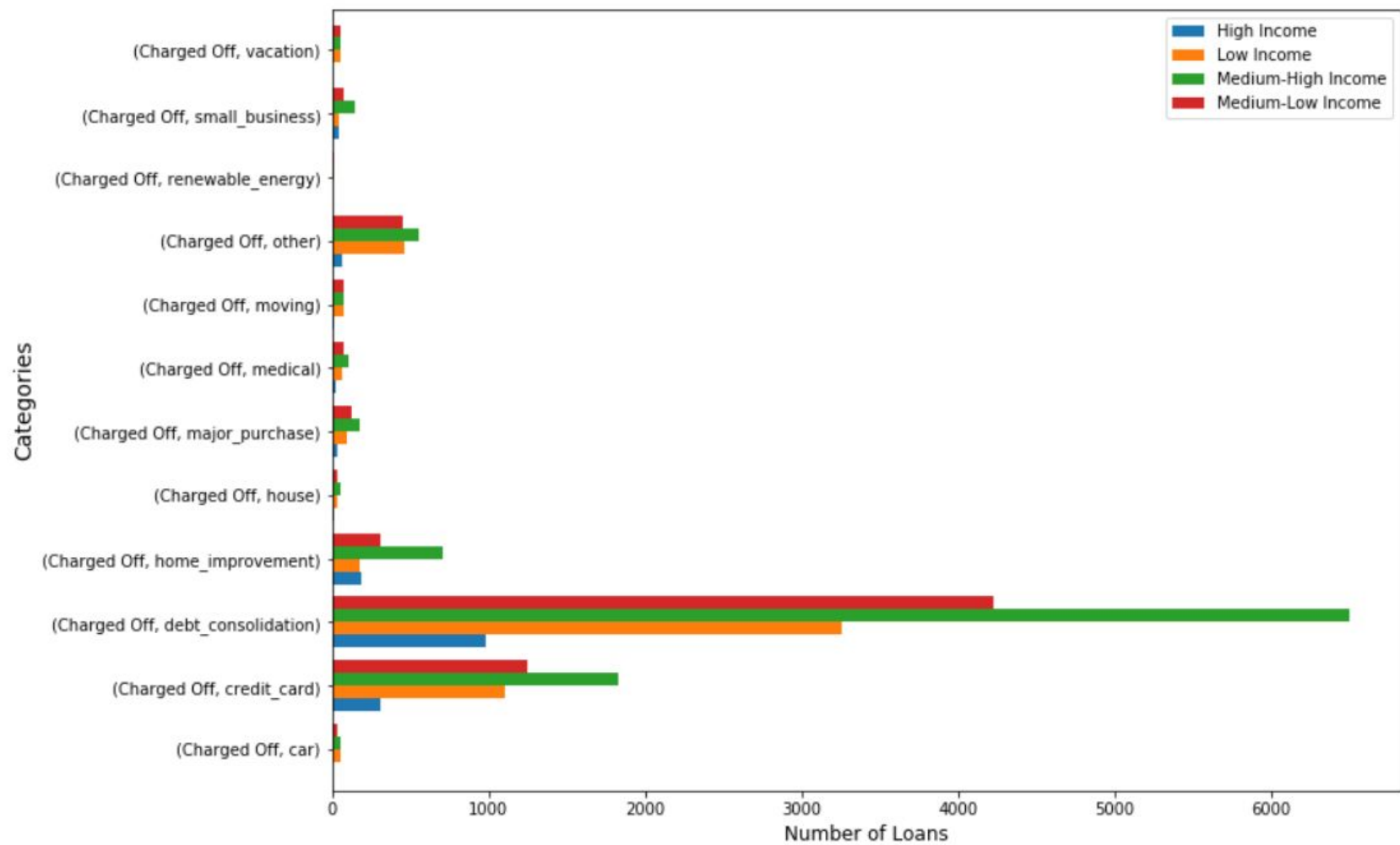
## Loan Request Categories



## Loan Request Categories

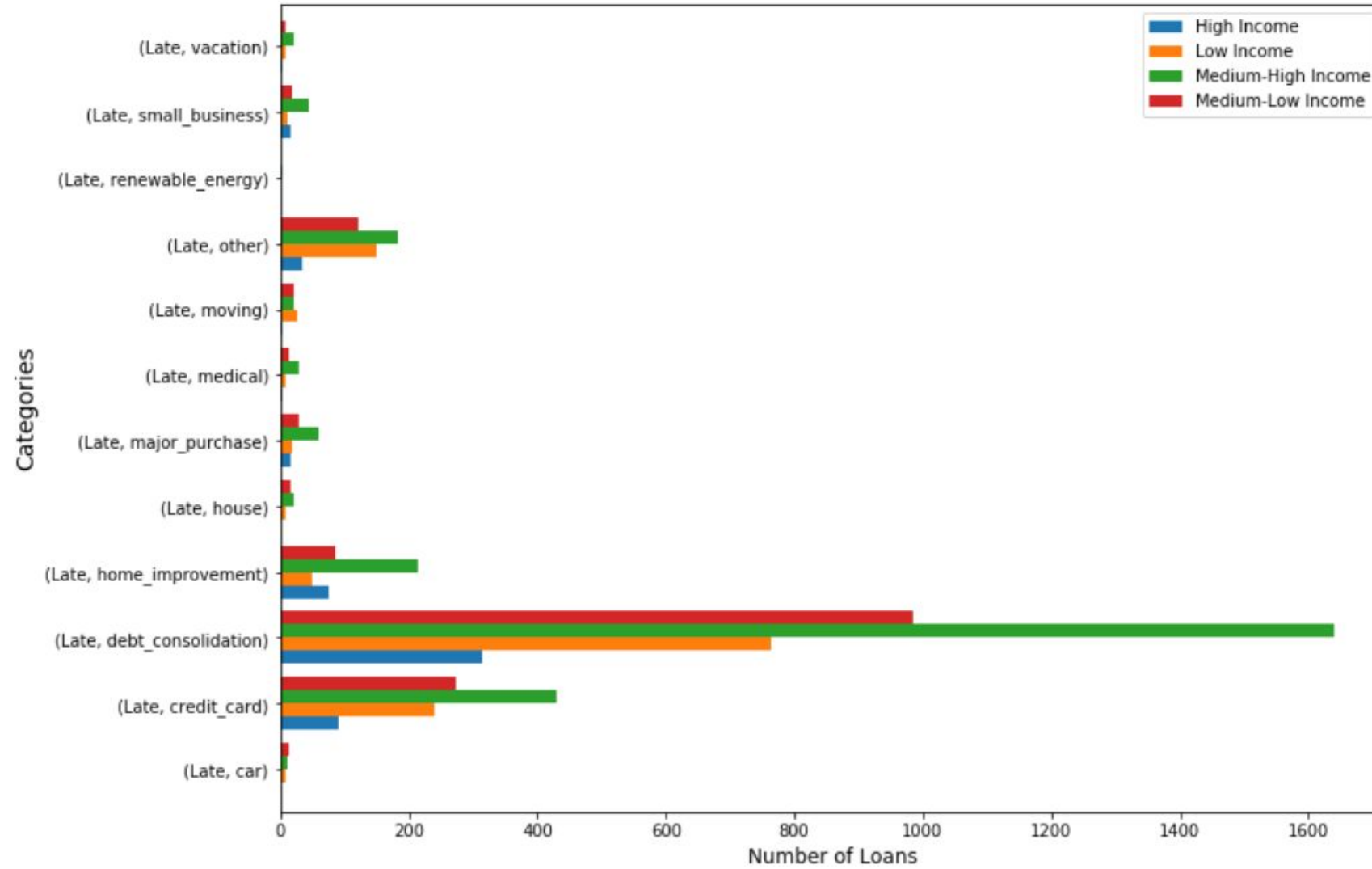


## Loan Request Categories

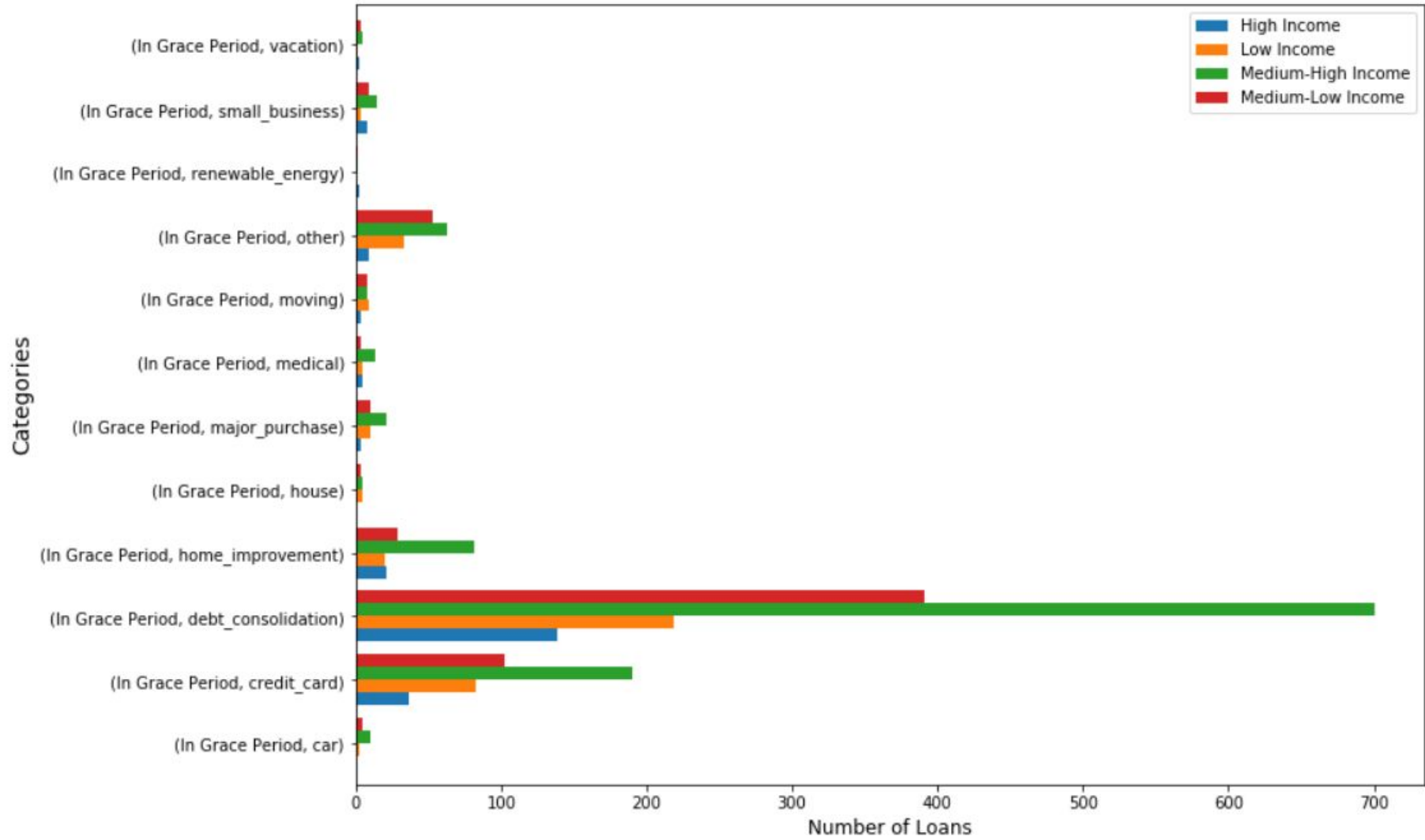




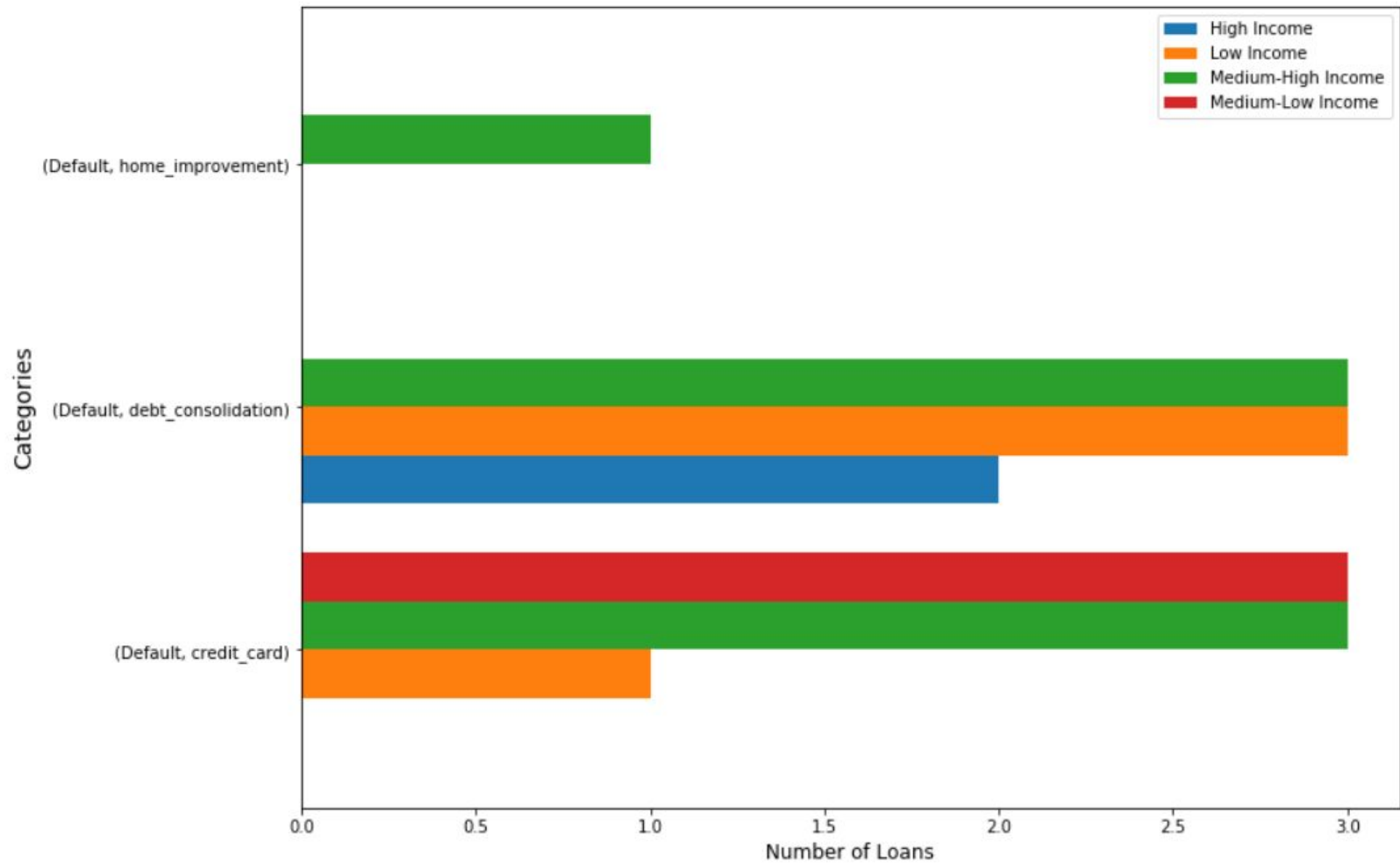
## Loan Request Categories




## Loan Request Categories

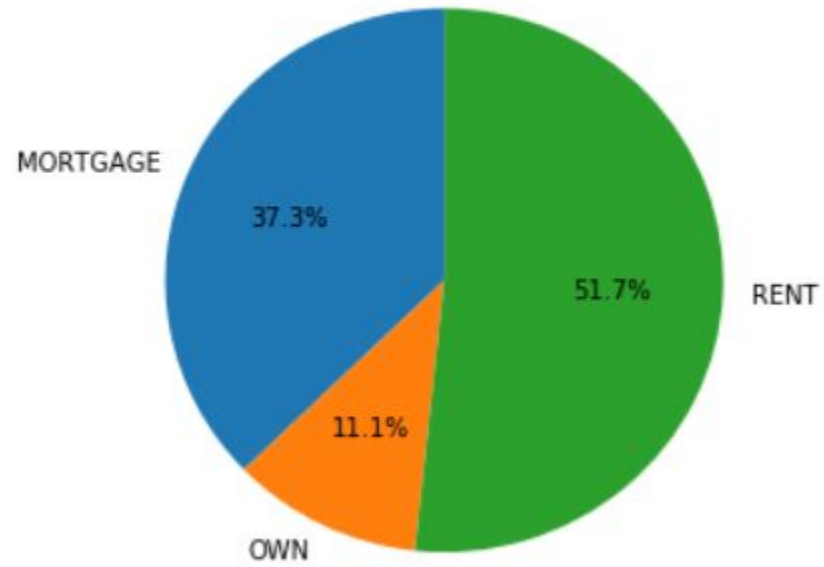


## Loan Request Categories

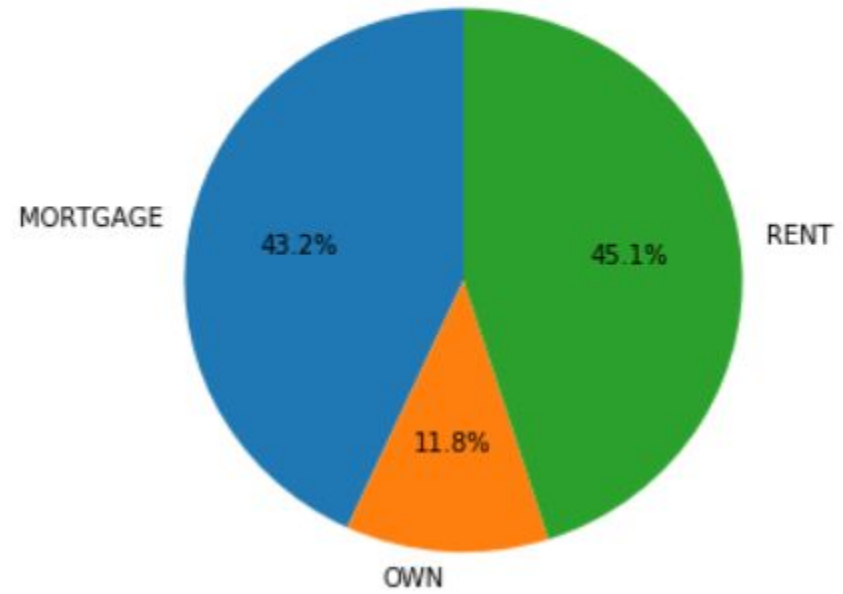


- 
- ▶ The loan request categories reveal no significant differences for each loan variant. In fact, the most significant purpose for a loan is attributed to debt consolidation followed by credit card and home improvement.

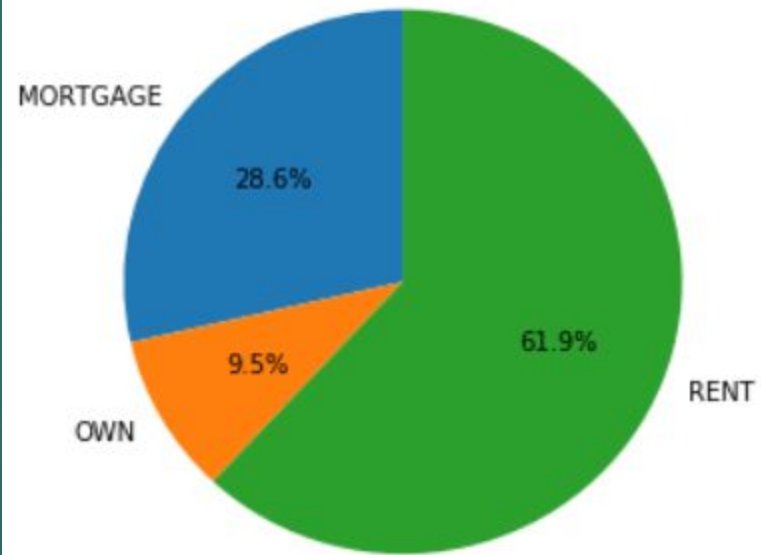
## Home Ownership and Charged Off Loans



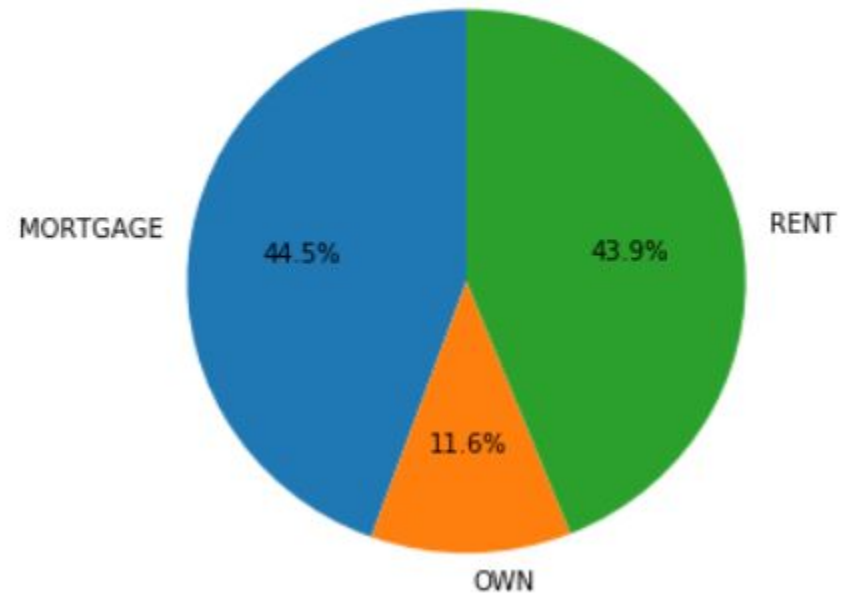
## Home Ownership and Current Loans



## Home Ownership and Default Loans

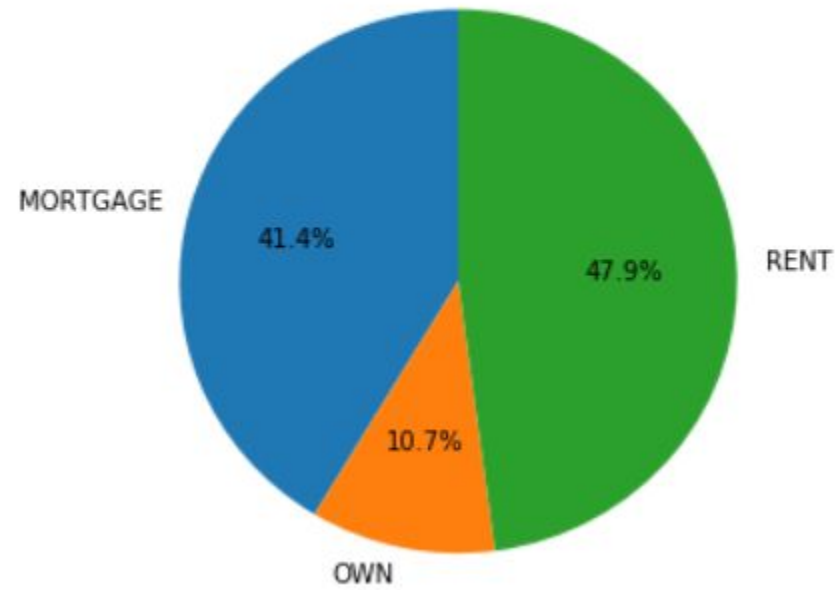


## Home Ownership and Fully Paid Loans

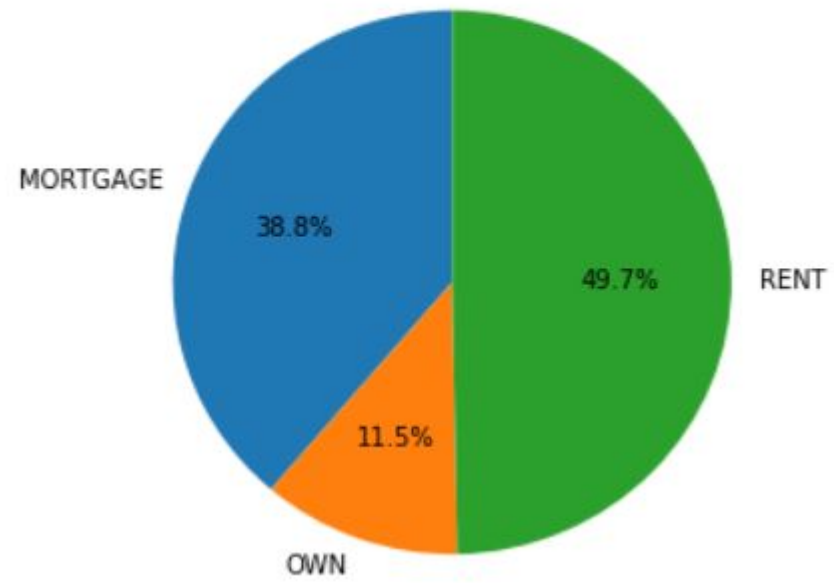





## Home Ownership and In Grace Period Loans

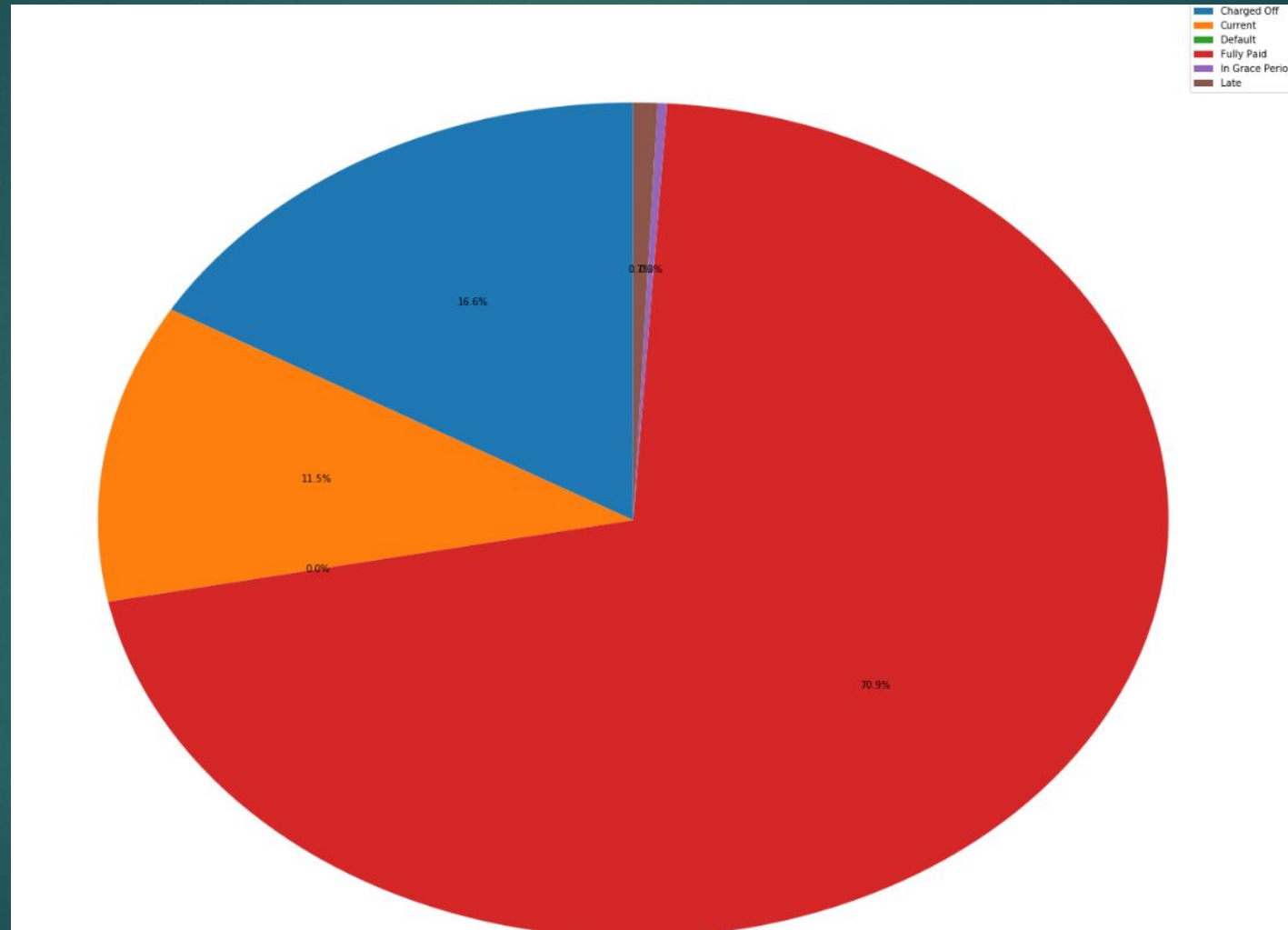


## Home Ownership and Late Loans

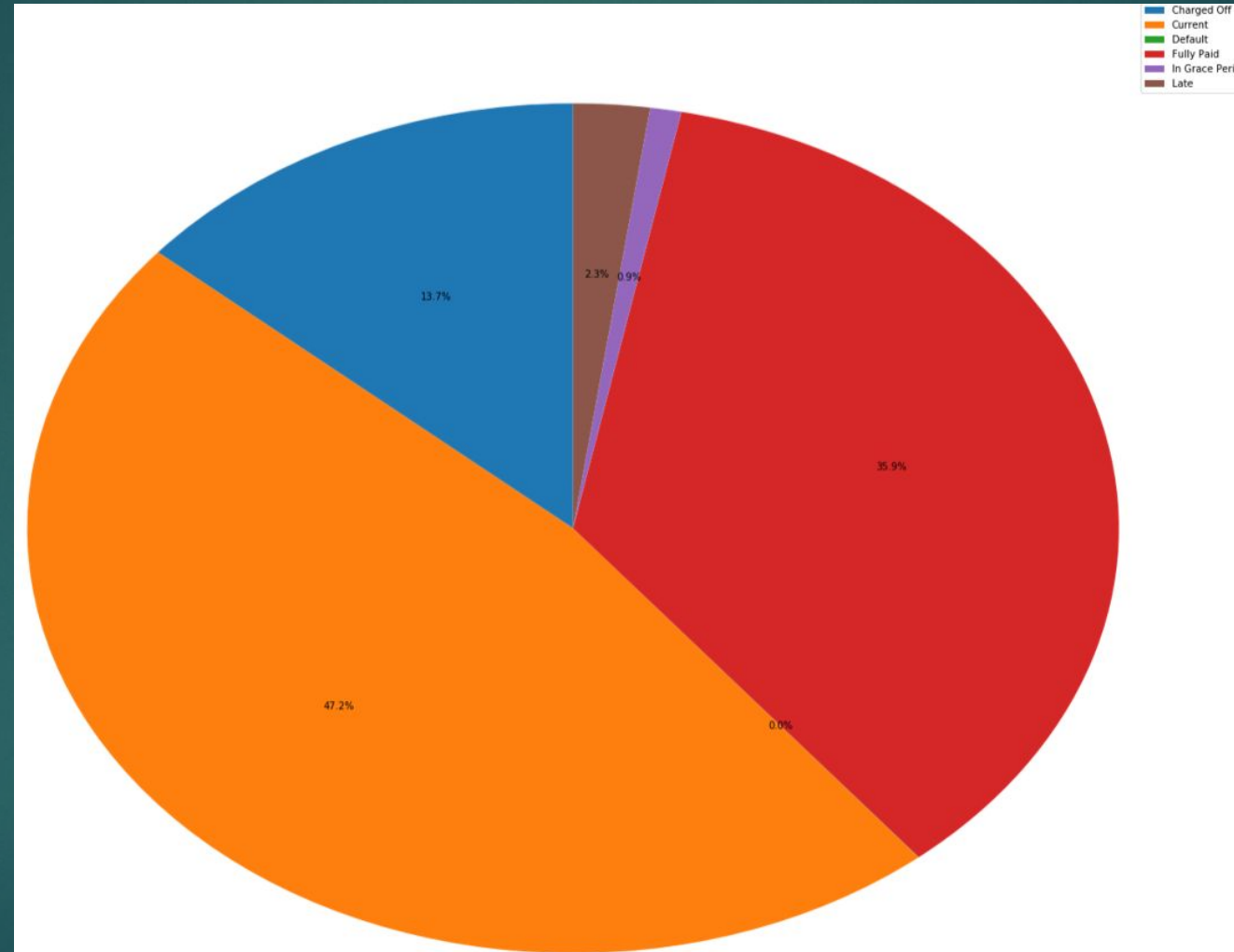


- 
- ▶ Charged off, In grace period, late, and default loans are more associated with rent than mortgage while the other loan variants were more associated with mortgage.

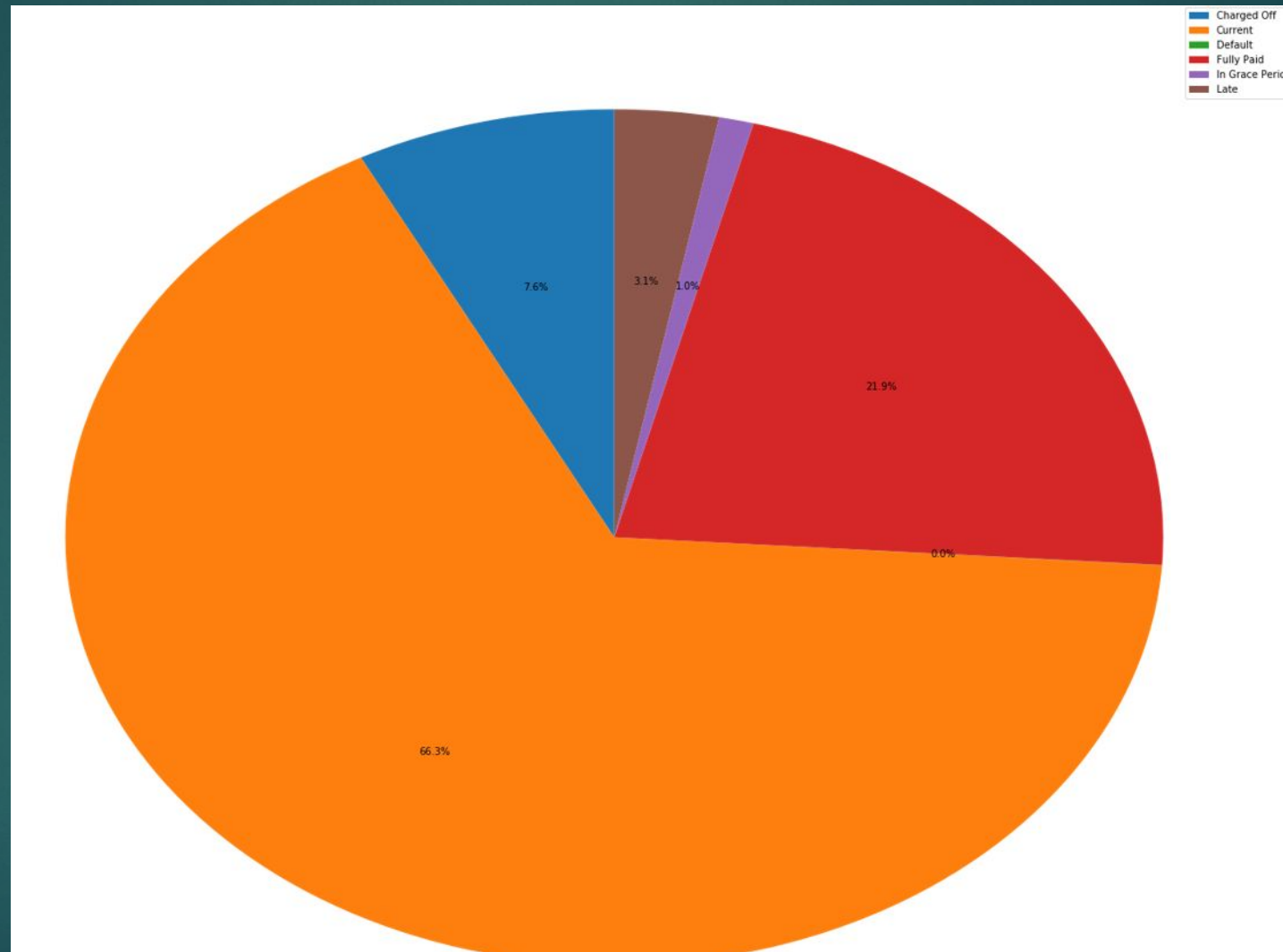
# Distribution of Loans in 2014



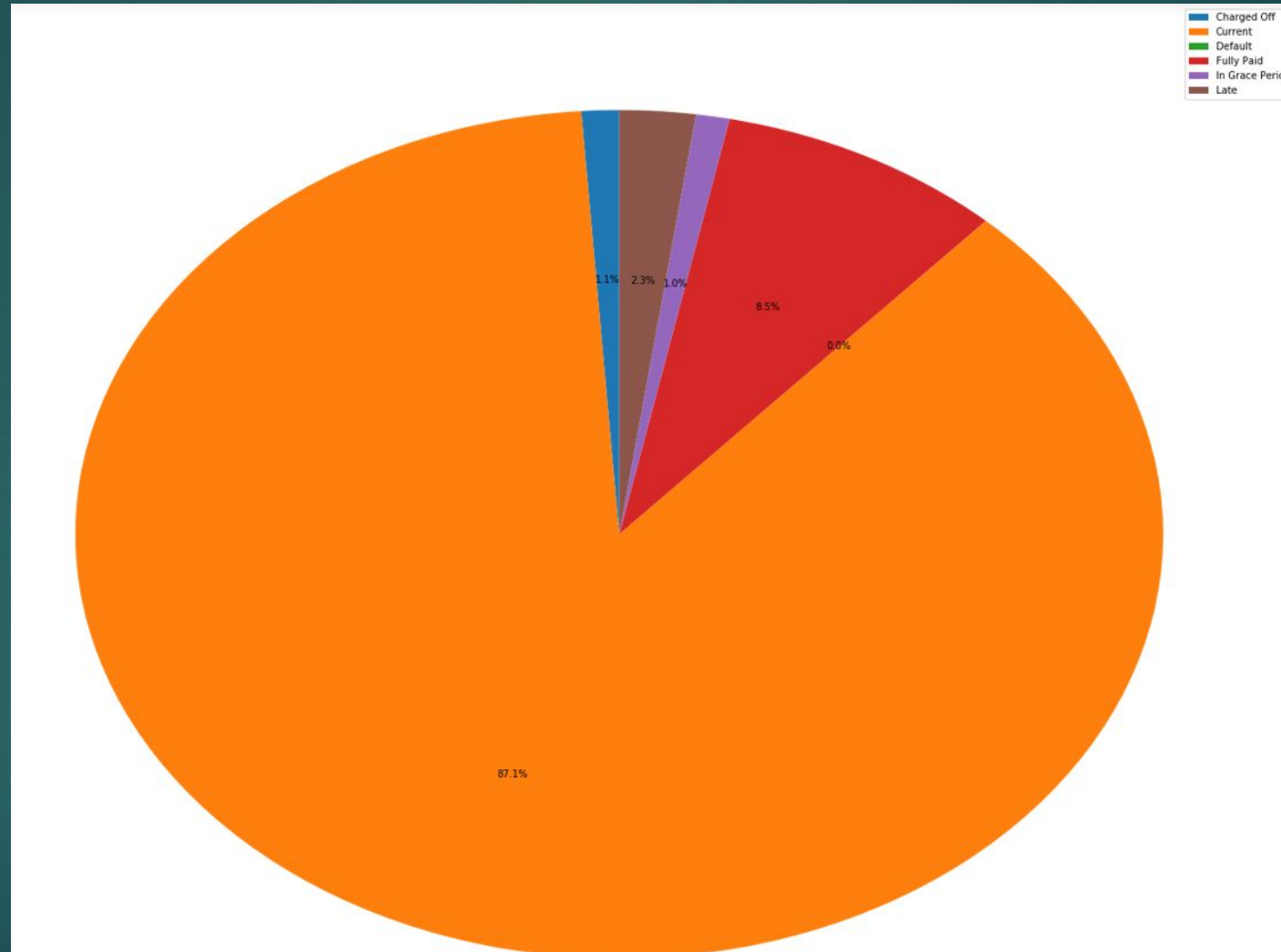
# Distribution of Loans in 2015



# Distribution of Loans in 2016



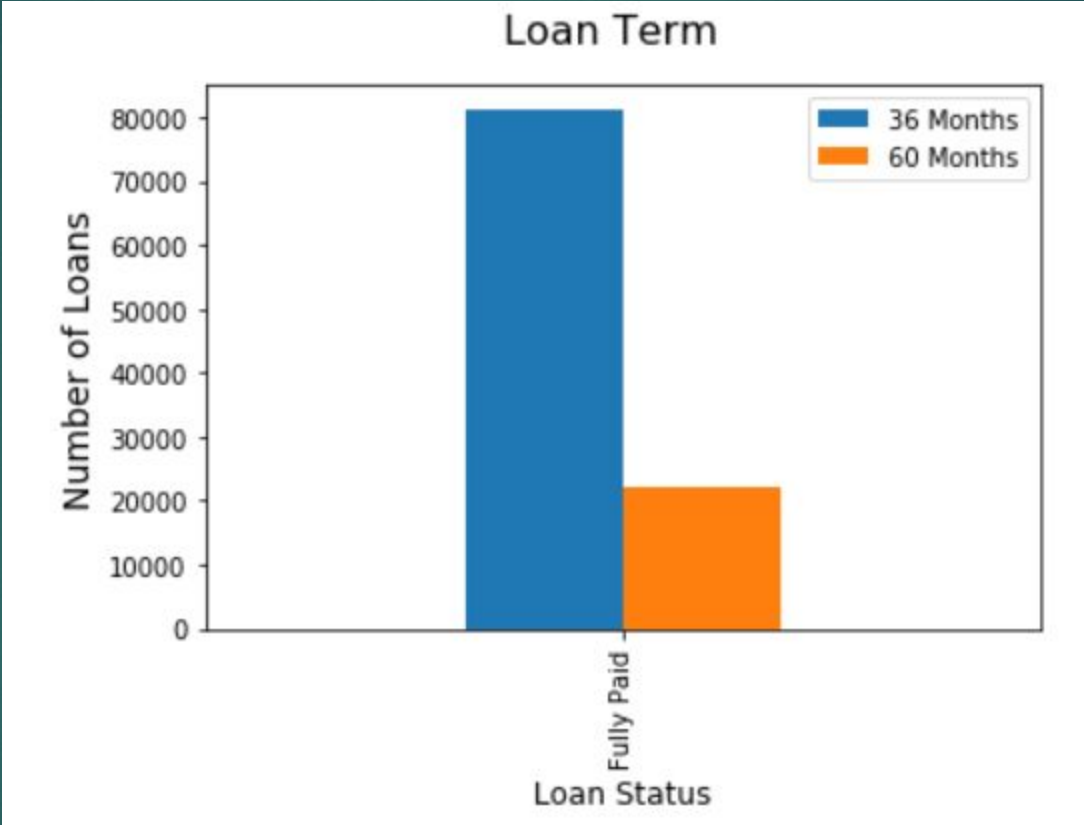
# Distribution of Loans in 2017

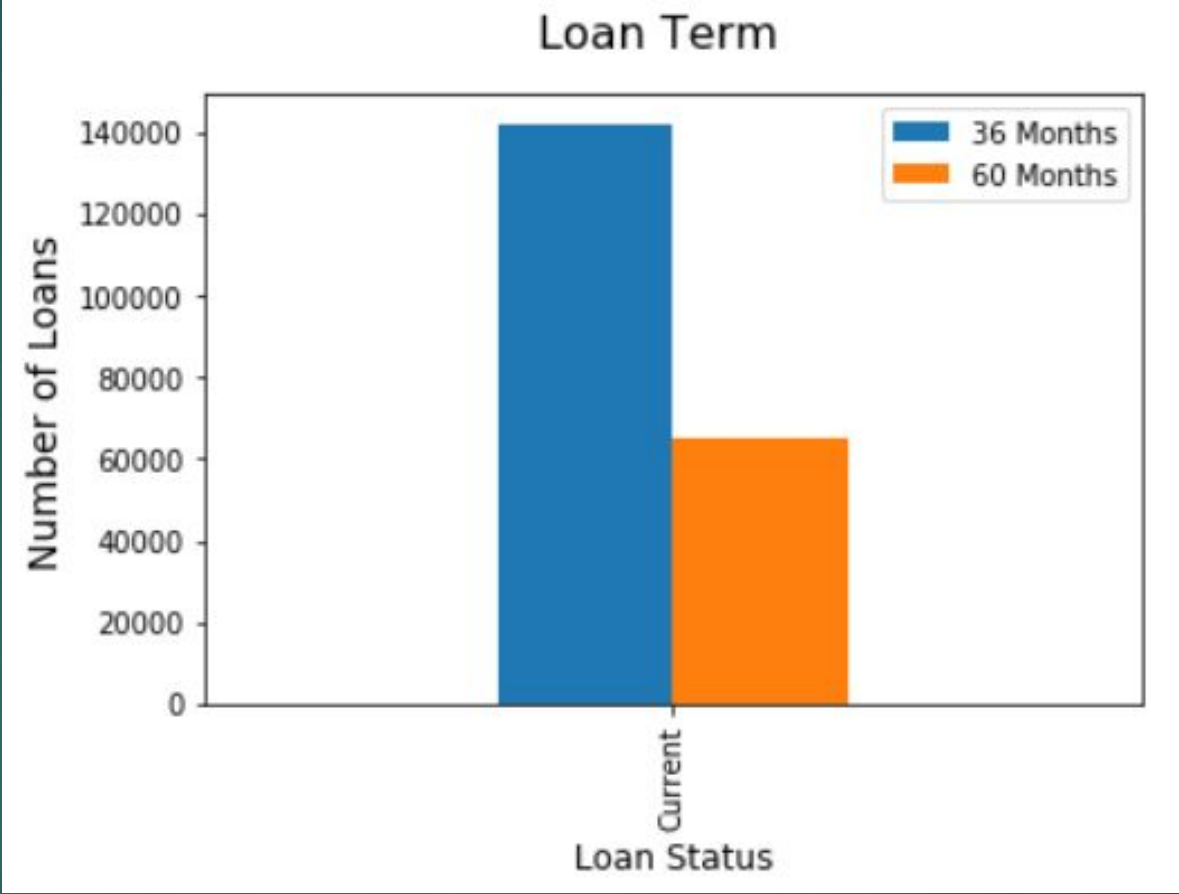




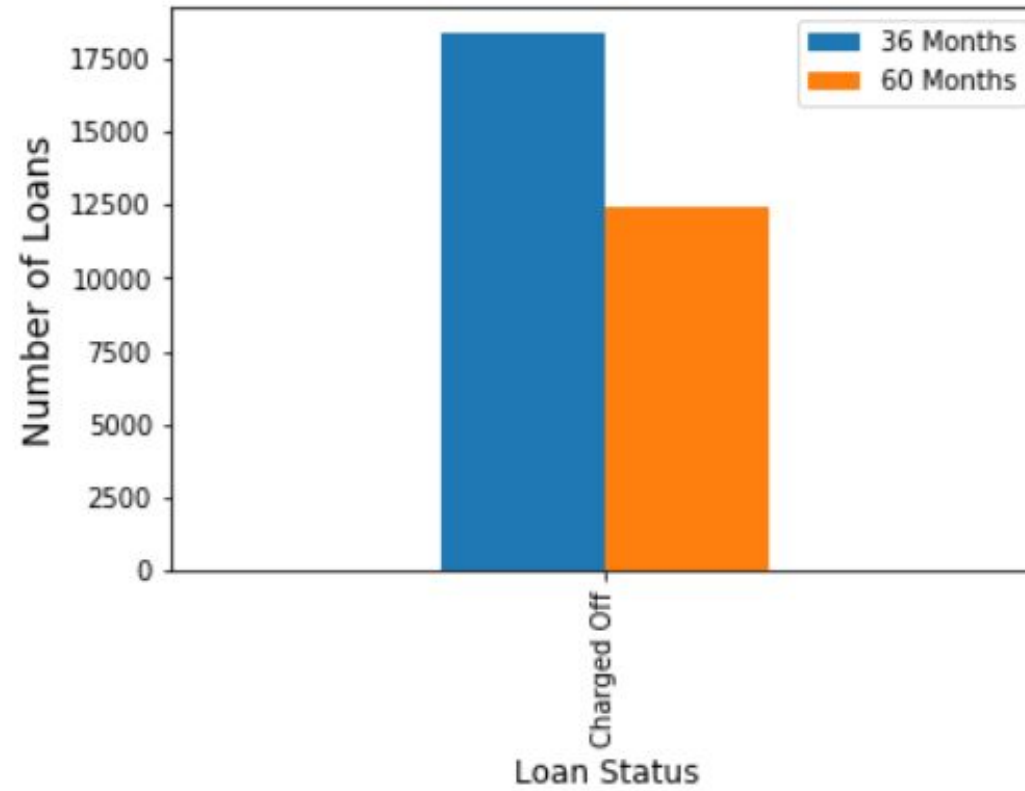
- ▶ Initially, fully paid loans followed by charged off and current loans were the largest portions at 70.9%, 16.6%, and 11.5%, respectively.
- ▶ However, the fully paid and charged off percentages decreased dramatically as the current loan percentage significantly increased.
- ▶ In 2017, current loans made up 47.2% followed by fully paid loans at 35.9%. Default loans made up the smallest percentage (near 0%) followed by in grace period loans (near 1%). Therefore, this trend may continue in the future.

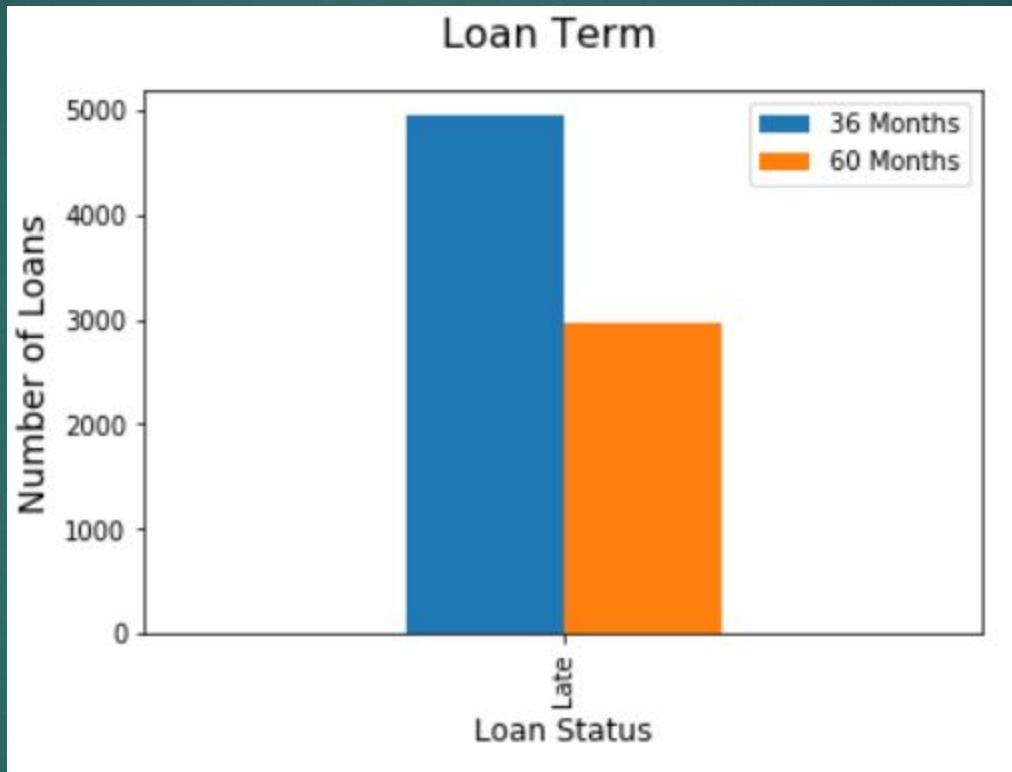




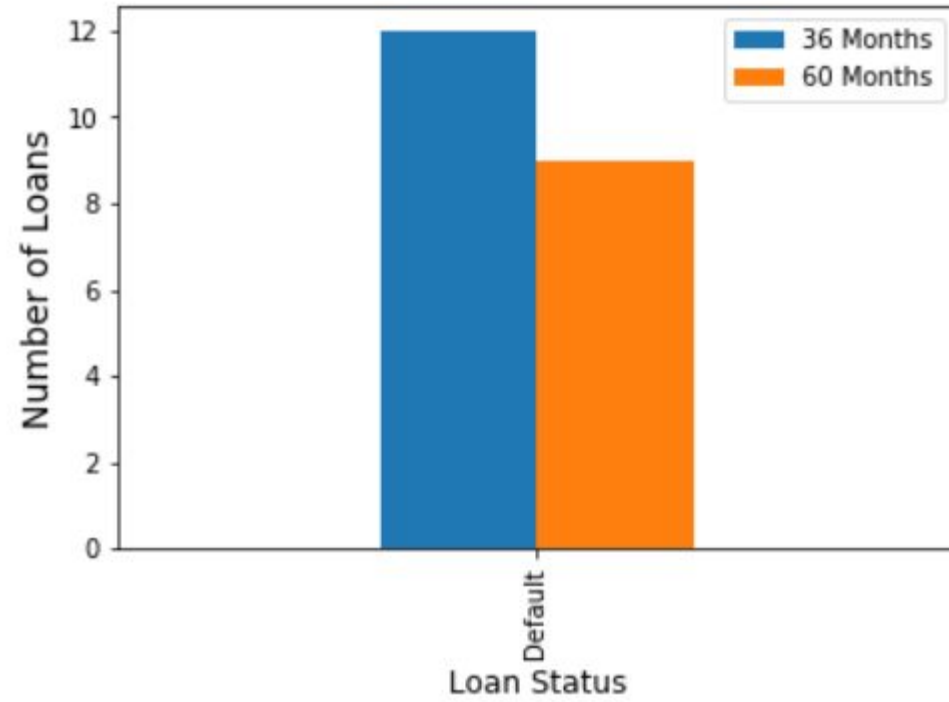


### Loan Term

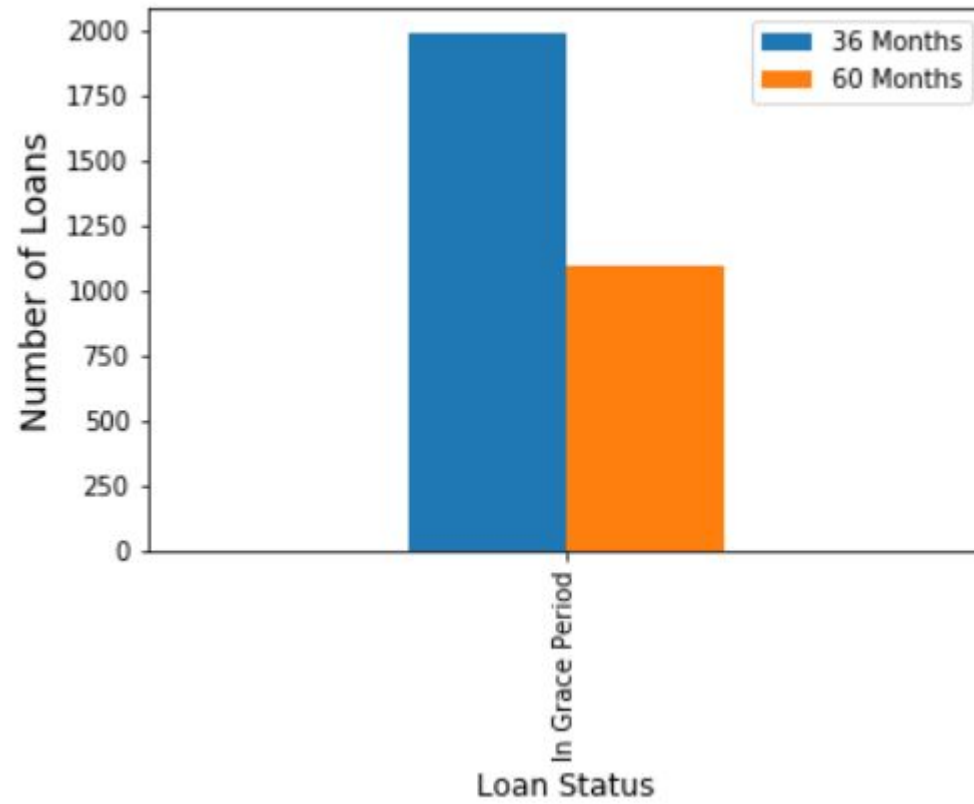





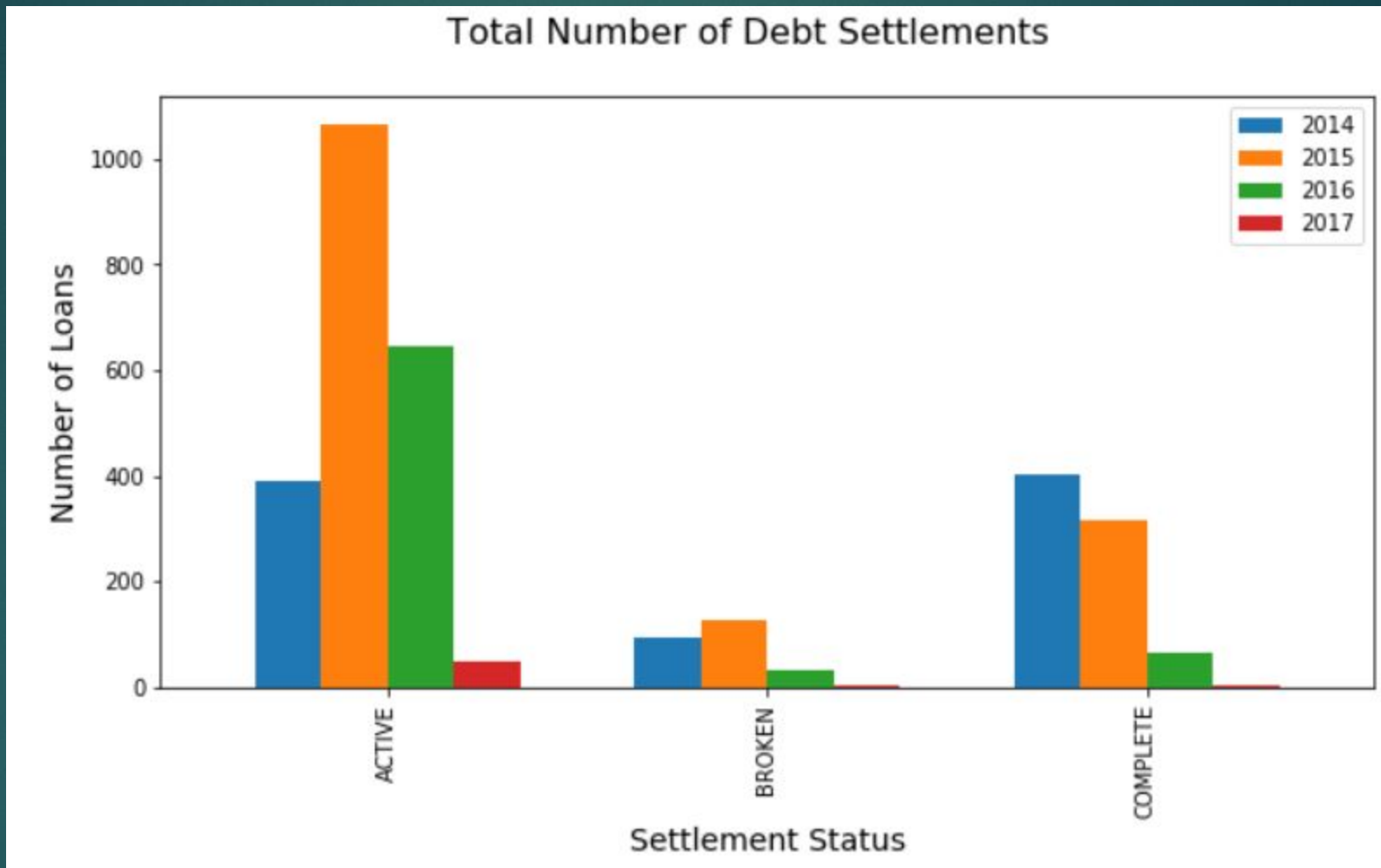
### Loan Term



### Loan Term

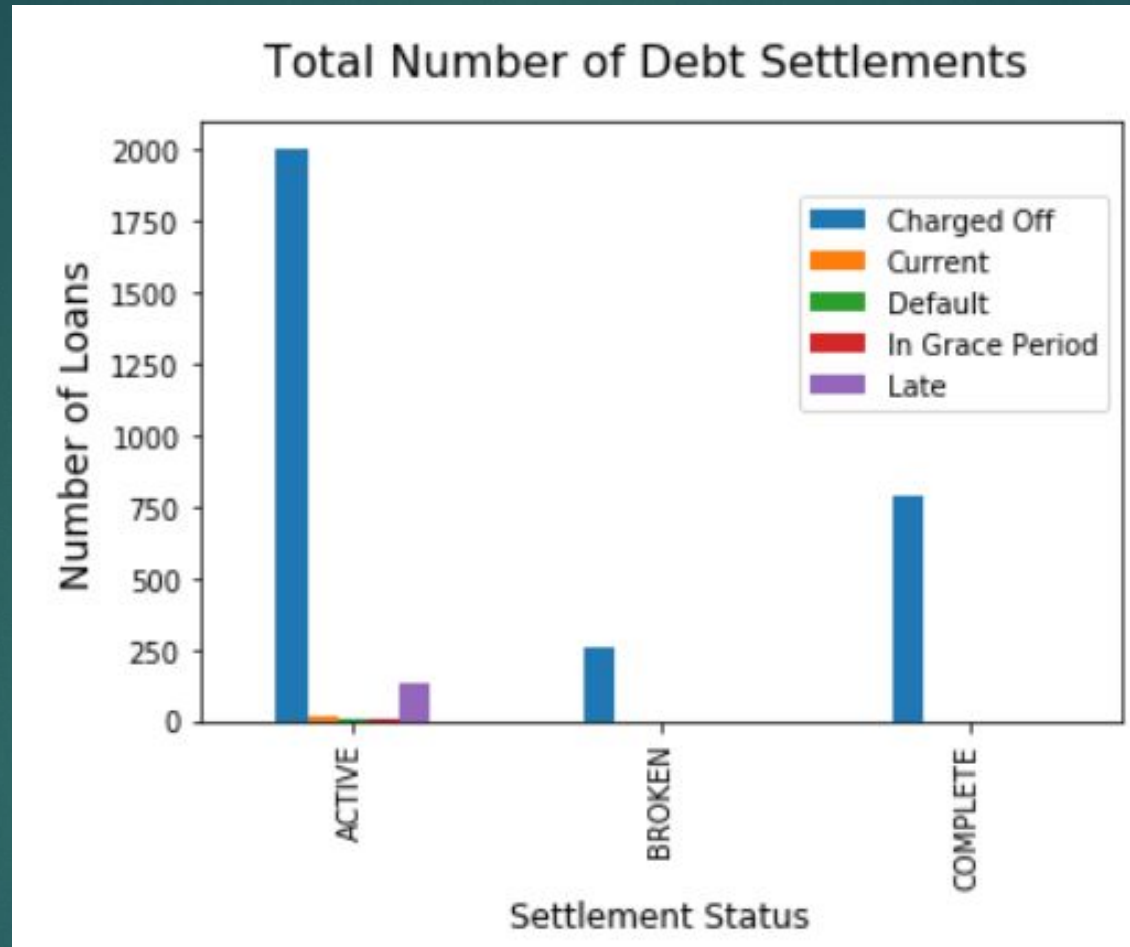


- 
- ▶ Fully paid and current loans tend to be associated with shorter loan term (36 months) unlike the other loan variants (especially default loans)



The overall number of settlement plans have decreased dramatically. Most of the debt settlements were active followed by complete.



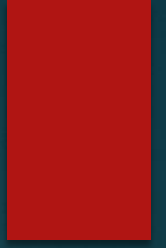


most active settlements were charged off (2000 loans), followed by late (134 loans), and current (11 loans). Default and in grace period tied last with only 2 loans. Charged off loans made up all of the broken and complete settlements.

# Conclusion

- ▶ Fully paid and current loans are associated with higher LC grades, lower dtis, higher FICO scores, and lower credit utilization compared to the other loans.
- ▶ The number of current loans has dramatically increased while fully paid and charged off loan decreased.
- ▶ Although the overall number of settlement plans have decreased dramatically in the four-year period, the highest debt settlements are active.

# Learning Processes



- ▶ I have learned how to import and clean raw data.
- ▶ I have learned a great deal using matplotlib, pandas, particularly pandas data frame. I have manipulated the data to plot pie charts, bar charts, line graphs, and choropleth maps.
- ▶ I have also learned about peer-to-peer lending and the loan status variants of the Northeastern states.