

- ii. Thorax widest at middle, margin distinctly crenate, disk coarsely punctate.

Punctures of thorax regularly placed. . . *profunda*, Blanch.

Punctures of thorax irregularly placed, the median line and often lateral spaces smooth  
..... *rugosa*, Mels.

Of the species above given, *grandis* is reported (in Canada) only from Nova Scotia, and *limula* from "south of Hudson's Bay." A few of the others are simply recorded from "Canada" without more definite locality; but as they occur in the adjacent United States, they are in all probability to be met with in the provinces under consideration. The *cognata* of the Society's list is simply a variety of *fraterna*, in which the thoracic punctures are equal in size and the margin irregular; *subtonsa* is a synonymy of *ilicis*, according to Dr. Horn.

#### POLYPHYLLA, HARR.

The only form found in East Canada is *P. variolosa*, Hentz (Fig. 27), a very fine, large insect, nearly or quite an inch in length. The form is something like that of *Lachnosterna*, but the upper surface is marked with three white vittæ on the thorax and indistinct lines and spots on the elytra, of whitish scales. The antenna of the ♂ is furnished with a very long club.

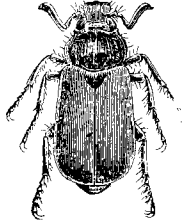


Fig. 27.

#### OBITUARY.

Died, in New York City, 21st April, 1894, Mrs. Julia Perkins Ballard, wife of Prof. Addison Ballard, now of New York University, but for many years of Lehigh University. It was at Easton, Pa., that Mrs. Ballard became interested in entomology, and her personal experiences were published in the little volume, "Insect Lives, or Born in Prison," later revised and much enlarged, under the name of "Among the Moths and Butterflies," Putnams, 1890. Mrs. Ballard was enthusiastic in her studies, and her charming books have done much to foster a love of natural history among the young people.

W. H. E.