

Load CSV file in excel format



Funded by
the European Union



UK Research
and Innovation



Schweizerische Eidgenossenschaft
Confédération suisse
Confederazione Svizzera
Confederaziun svizra

Swiss Confederation

Federal Department of Economic Affairs,
Education and Research EAER
State Secretariat for Education,
Research and Innovation SERI

EU Framework Programmes

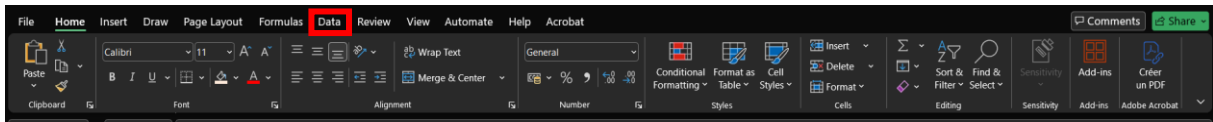
Notice

The contents of this document are the copyright of the FutuRaM consortium and shall not be copied in whole, in part, or otherwise reproduced (whether by photographic, reprographic or any other method), and the contents thereof shall not be divulged to any other person or organisation without prior written permission. Such consent is hereby automatically given to all members who have entered into the FutuRaM Consortium Agreement, dated 1st June 2022, and to the European Commission to use and disseminate this information.

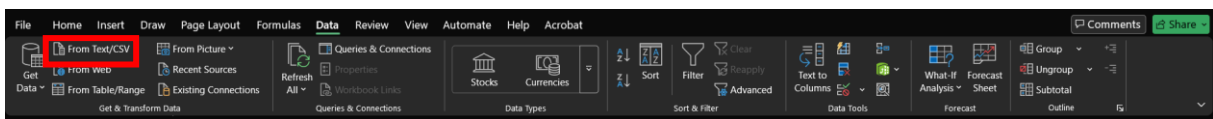
This information and content of this report is the sole responsibility of the FutuRaM consortium members and does not necessarily represent the views expressed by the European Commission or its services. Whilst the information contained in the documents and webpages of the project is believed to be accurate, the author(s) or any other participant in the FutuRaM consortium makes no warranty of any of any kind with regard to this material.

If the csv file has too many lines to be open in excel, you can sort the data you want before displaying them in excel. With the excel application open.

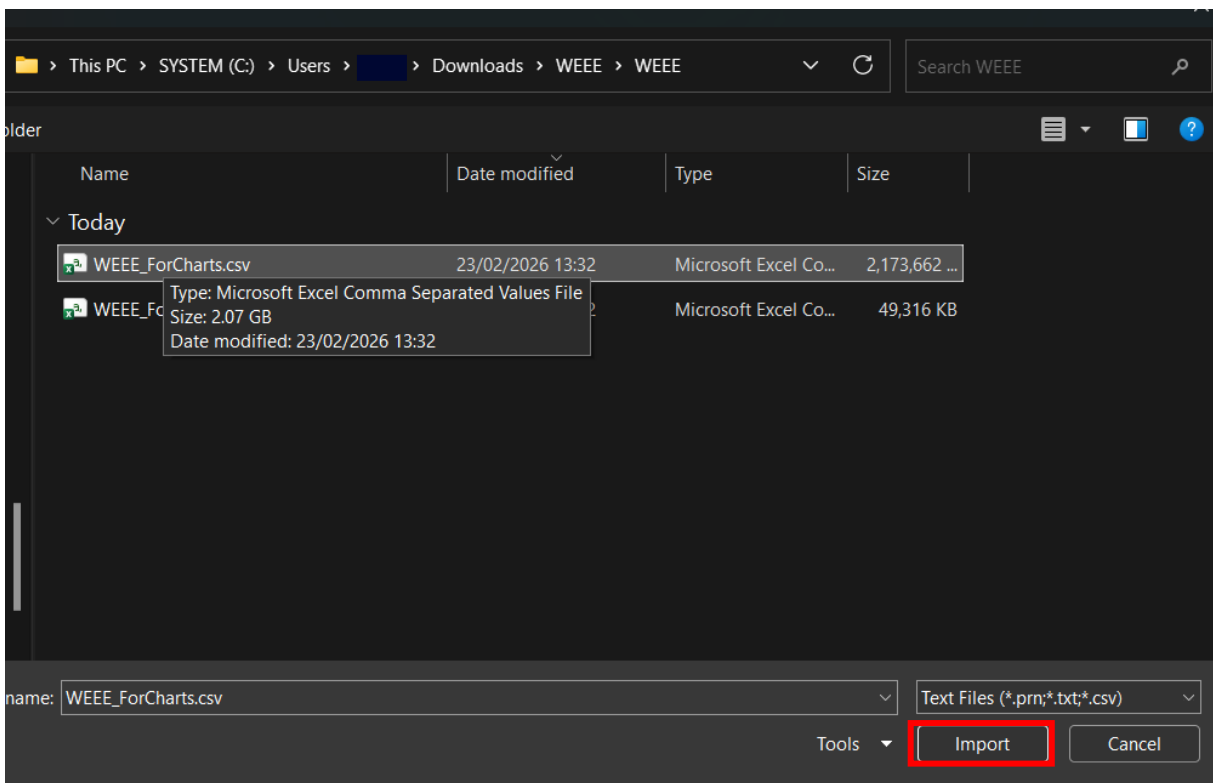
1. Go to the data on the upper choice



2. Select 'From Text/CSV'



3. Select the CSV file you want to look at



- Verify that the layout is the same as below, in other case change the file origin, delimiter. When it is good you can click on transform data

□ ×

WEEE_ForCharts.csv

File Origin
1252: Western European (Windows) ▾

Delimiter
Comma ▾

Data Type Detection
Based on first 200 rows ▾

Waste Stream	Location	Year	Scenario	additionalSpecification	Stock/Flow ID	Layer 1	Layer 2	Layer 3
WEEE	AUT	2010	OBS		WEEE_EEEPOM	WEEE_Cat1		
WEEE	AUT	2010	OBS		WEEE_EEEPOM	WEEE_Cat1	PCB	
WEEE	AUT	2010	OBS		WEEE_EEEPOM	WEEE_Cat1	PCB	WEEEMaterialRest
WEEE	AUT	2010	OBS		WEEE_EEEPOM	WEEE_Cat1	PCB	WEEEMaterialRest
WEEE	AUT	2010	OBS		WEEE_EEEPOM	WEEE_Cat1	PCB	WEEEMaterialRest
WEEE	AUT	2010	OBS		WEEE_EEEPOM	WEEE_Cat1	PCB	WEEEMaterialRest
WEEE	AUT	2010	OBS		WEEE_EEEPOM	WEEE_Cat1	PCB	WEEEMaterialRest
WEEE	AUT	2010	OBS		WEEE_EEEPOM	WEEE_Cat1	PCB	WEEEMaterialRest
WEEE	AUT	2010	OBS		WEEE_EEEPOM	WEEE_Cat1	PCB	WEEEMaterialRest
WEEE	AUT	2010	OBS		WEEE_EEEPOM	WEEE_Cat1	PCB	WEEEMaterialRest
WEEE	AUT	2010	OBS		WEEE_EEEPOM	WEEE_Cat1	PCB	WEEEMaterialRest
WEEE	AUT	2010	OBS		WEEE_EEEPOM	WEEE_Cat1	PCB	WEEEMaterialRest
WEEE	AUT	2010	OBS		WEEE_EEEPOM	WEEE_Cat1	PCB	WEEEMaterialRest
WEEE	AUT	2010	OBS		WEEE_EEEPOM	WEEE_Cat1	PCB	WEEEMaterialRest
WEEE	AUT	2010	OBS		WEEE_EEEPOM	WEEE_Cat1	PCB	WEEEMaterialRest
WEEE	AUT	2010	OBS		WEEE_EEEPOM	WEEE_Cat1	PCB	WEEEMaterialRest
WEEE	AUT	2010	OBS		WEEE_EEEPOM	WEEE_Cat1	PCB	WEEEMaterialRest
WEEE	AUT	2010	OBS		WEEE_EEEPOM	WEEE_Cat1	PCB	WEEEMaterialRest
WEEE	AUT	2010	OBS		WEEE_EEEPOM	WEEE_Cat1	PCB	WEEEMaterialRest
WEEE	AUT	2010	OBS		WEEE_EEEPOM	WEEE_Cat1	WEEComponentRest	

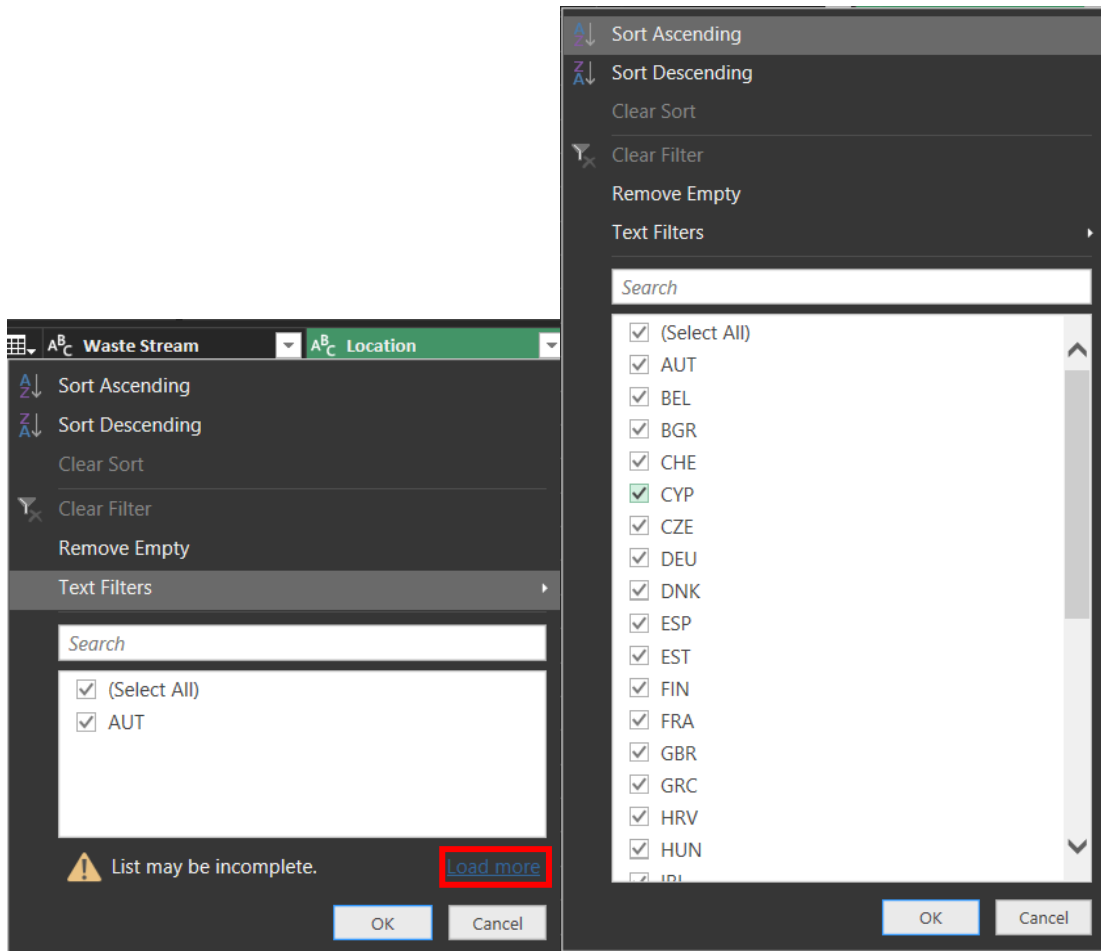
Load ▾
Transform Data
Cancel

5. You will now see the same as in the below figure:

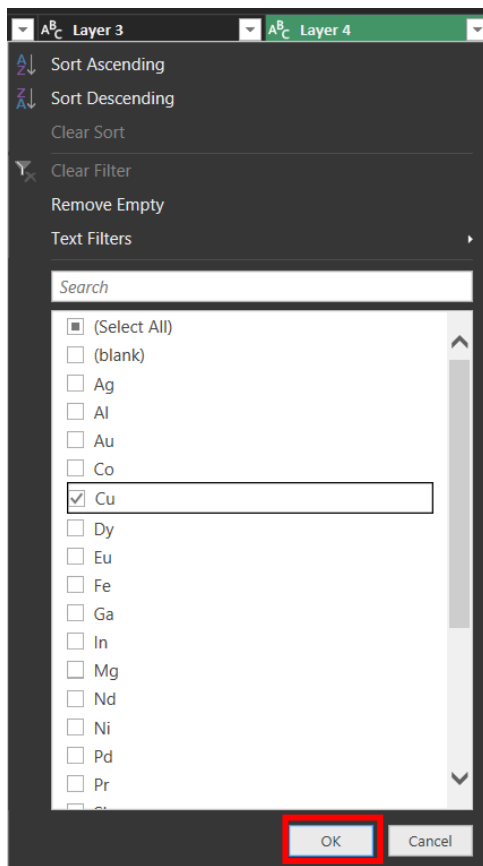
The screenshot displays the Power Query Editor interface. The main area shows a data table with the following columns: Waste Stream, Location, Year, Scenario, additionalSpecification, Stock/Flow ID, and Layer 1. The 'Location' column is highlighted in green. The table contains 28 rows of data. The 'Query Settings' pane on the right shows the 'Applied Steps' list with 'Promoted Headers' and 'Changed Type'.

	Waste Stream	Location	Year	Scenario	additionalSpecification	Stock/Flow ID	Layer 1
1	WEEE	AUT	2010	OBS		WEEE_EEEPOM	WEEE_Cat1
2	WEEE	AUT	2010	OBS		WEEE_EEEPOM	WEEE_Cat1
3	WEEE	AUT	2010	OBS		WEEE_EEEPOM	WEEE_Cat1
4	WEEE	AUT	2010	OBS		WEEE_EEEPOM	WEEE_Cat1
5	WEEE	AUT	2010	OBS		WEEE_EEEPOM	WEEE_Cat1
6	WEEE	AUT	2010	OBS		WEEE_EEEPOM	WEEE_Cat1
7	WEEE	AUT	2010	OBS		WEEE_EEEPOM	WEEE_Cat1
8	WEEE	AUT	2010	OBS		WEEE_EEEPOM	WEEE_Cat1
9	WEEE	AUT	2010	OBS		WEEE_EEEPOM	WEEE_Cat1
10	WEEE	AUT	2010	OBS		WEEE_EEEPOM	WEEE_Cat1
11	WEEE	AUT	2010	OBS		WEEE_EEEPOM	WEEE_Cat1
12	WEEE	AUT	2010	OBS		WEEE_EEEPOM	WEEE_Cat1
13	WEEE	AUT	2010	OBS		WEEE_EEEPOM	WEEE_Cat1
14	WEEE	AUT	2010	OBS		WEEE_EEEPOM	WEEE_Cat1
15	WEEE	AUT	2010	OBS		WEEE_EEEPOM	WEEE_Cat1
16	WEEE	AUT	2010	OBS		WEEE_EEEPOM	WEEE_Cat1
17	WEEE	AUT	2010	OBS		WEEE_EEEPOM	WEEE_Cat1
18	WEEE	AUT	2010	OBS		WEEE_EEEPOM	WEEE_Cat1
19	WEEE	AUT	2010	OBS		WEEE_EEEPOM	WEEE_Cat1
20	WEEE	AUT	2010	OBS		WEEE_EEEPOM	WEEE_Cat1
21	WEEE	AUT	2010	OBS		WEEE_EEEPOM	WEEE_Cat1
22	WEEE	AUT	2010	OBS		WEEE_EEEPOM	WEEE_Cat1
23	WEEE	AUT	2010	OBS		WEEE_EEEPOM	WEEE_Cat1
24	WEEE	AUT	2010	OBS		WEEE_EEEPOM	WEEE_Cat1
25	WEEE	AUT	2010	OBS		WEEE_EEEPOM	WEEE_Cat1
26	WEEE	AUT	2010	OBS		WEEE_EEEPOM	WEEE_Cat1
27	WEEE	AUT	2010	OBS		WEEE_EEEPOM	WEEE_Cat1
28							

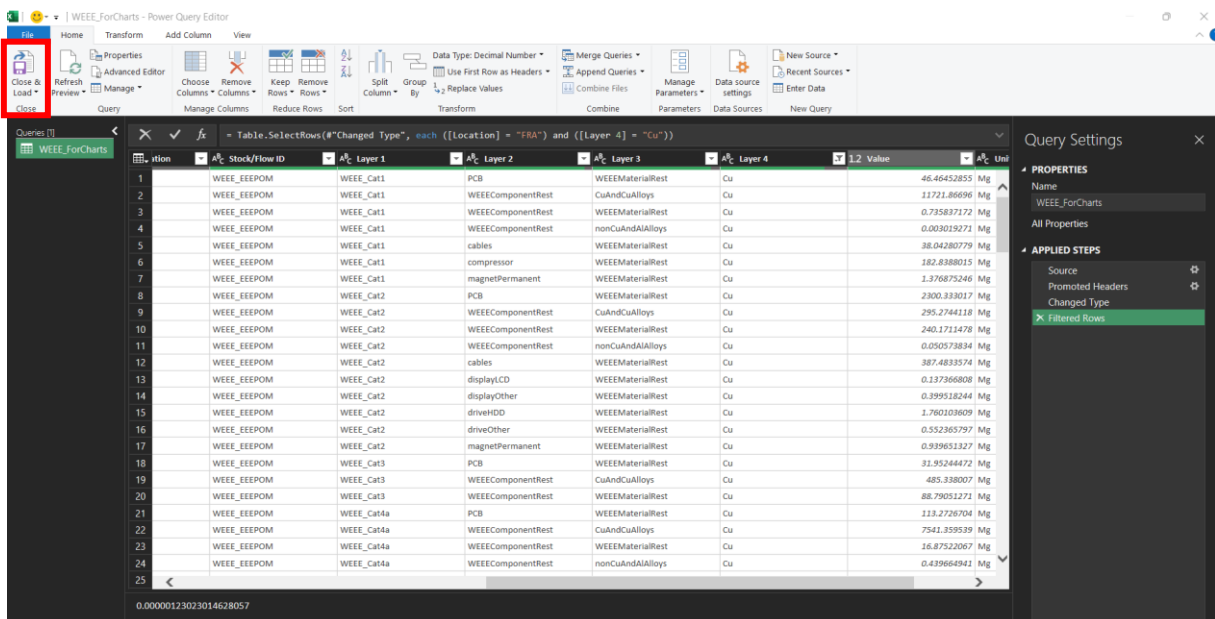
6. To reduce the number of lines you need to select the data you want to see, for each column you can select data. For example, for the Location column, not all the filter possibilities will be shown you need to load more to have all the data (it can take some time). After you will have all the countries list and you can select the ones you want to see:



7. An other example from the Layer 4 where only Cu is selected



8. When everything is filter you will have something like this. You will need to load the data in excel



- The selected lines will be load in excel. You can continue to filter the data and the document needs to be save in a new file.

