

EXCURSION TO GUILDFORD AND GODALMING.

SATURDAY, MAY 10TH, 1902.

Director and Excursion Secretary: A. K. COOMARASWAMY,
B.Sc., F.G.S.

(*Report by* THE DIRECTOR.)

The party left Guildford Station at 2.20 and proceeded to the Guildford Park Potteries, by Mr. Mitchell's kind permission. The pit nearest the railway station showed about eighteen inches of the shell bed which overlies the mottled clays. The shell bed contains *Cyrena*, *Ostrea*, *Melania inquinata*, DeFr., and *Cerithium junatum*, Mant., and probably represents the top of the Woolwich and Reading Series. Rounded pebbles and a shark's tooth (found by Mr. Whitaker) occurring in the soil above the shell-bed, seem to indicate the overlying basement bed of the London Clay. The party then proceeded to Littleton, where sections of Folkestone beds and Bargate stone were examined, and the President gave a full account of the Lower Greensand question. Proceeding to Littleton brick kilns, by permission of Mr. F. Mitchell, the fossiliferous nodules of the Atherfield Clay were examined, and yielded *Ammonites* sp., *Terebratulina sella*, Sow., *Trigonia candata*, Ag., *Cucullea* sp. and *Pterocera* sp. in addition to the fossils mentioned in the last report (*vide infra*).

Crossing the Peasemarch anticline and ascending Frith Hill, the fine section in the Hindhead road was examined and yielded Brachiopoda, remanié, fish teeth, etc. This section clearly shows that the Bargate stone and pebble beds are quite inseparable, the former being only portions of the latter consolidated with calcareous cement.

After tea at the Angel Hotel, and a vote of thanks to the Director, the party returned to London by the 7.42 train.

REFERENCES.

- Geological Survey Map, Sheet 8. Drift Edition. Price 8s. 6d.
 Ordnance Survey Map, 1 inch. Sheet 285. Price 1s.
 1868. C. J. A. MEYER—"The Lower Greensand of Godalming."
 1894. F. CHAPMAN—"The Bargate Beds of Surrey," etc. *Quart. Journ. Geol. Soc.*, vol. 1, pp. 677-730.
 1899. A. K. COOMARASWAMY. "Excursion to Guildford and Godalming." *Proc. Geol. Assoc.*, vol. xvi, p. 254.

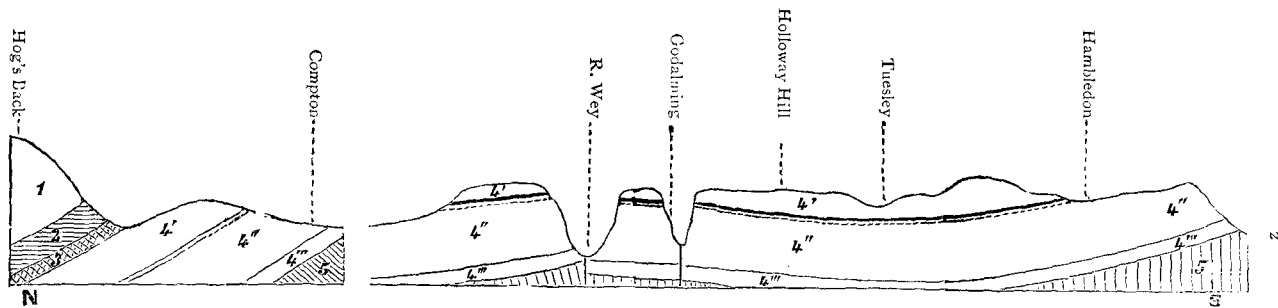
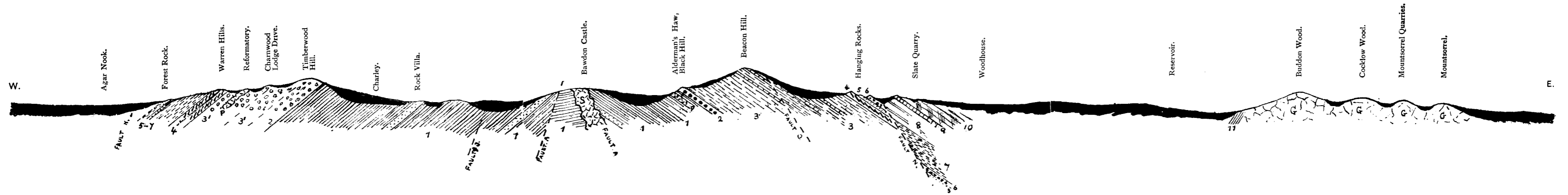


FIG. 56. SECTION THROUGH GODALMING FROM NORTH TO SOUTH.

- | | |
|------------------|-------------------------------|
| 1. Chalk. | 4'. Folkestone Beds. |
| 2. U. Greensand. | 4''. Sandgate and Hythe Beds. |
| 3. Gault. | 4'''. Atherfield Beds. |
| 5. Weald Clay. | |

NOTE.—The “fault” shown in this section as occurring near Compton is greatly exaggerated, and, though certainly existing at this point, might have been better represented by a sudden bend or anticlinal.

SECTION ACROSS CHARNWOOD FOREST AND MOUNTSORREL.—By W. W. WATTS, M.A., SEC. G.S.
(Horizontal scale, 2 in. to 1 mile; vertical scale, 0·1 in. to 100 feet.)



- | | | | |
|-------------------------------------|---------------------------|---------------------------|---|
| Black = Keuper Marl. | | | |
| 11. Hornfels. | | 3. Beacon Hill Hornstones | } Lower Maplewell Series. |
| 10. Swithland Slates | } Brand Series. | 3. N.W. Agglomerates, &c. | |
| 9. Brand Conglomerate | | 2. Felsitic Agglomerate | } Blackbrook Series. |
| 8. Purple and Green Beds | | 1. Hornstones and Grits | |
| 7. Bradgate Olive Hornstones | } Upper Maplewell Series. | G. Granite | } Intrusive Rocks. |
| 6. } Woodhouse Ashes and Hornstones | | S. Syenite | |
| 5. } | | P. Porphyroid | |
| 4. Slate-agglomerate | | — — — Faults | { N = Normal,
O = Overthrust.
A = Anticlinal. |

Several of the places indicated are not absolutely in the line of Section.