

FAULT DIAGNOSTIC AND MONITORING METHODS OF INDUCTION MOTOR: A REVIEW

Partha Sarathee Bhowmik¹, Sourav Pradhan² and Mangal Prakash³

¹Department of Electrical Engineering, National Institute of Technology, Durgapur, India
psbhowmik@ieee.org

² Department of Electrical Engineering, National Institute of Technology, Durgapur, India
souravpradhan.sp@gmail.com

³ Department of Electrical Engineering, National Institute of Technology, Durgapur, India
mangalprakash21@gmail.com

ABSTRACT

Induction motors are widely used in transportation, mining, petrochemical, manufacturing and in almost every other field dealing with electrical power. These motors are simple, efficient, highly robust and rugged thus offering a very high degree of reliability. But like any other machine, they are vulnerable to faults, which if left unmonitored, might lead to catastrophic failure of the machine in the long run. On-line condition monitoring of the induction motors has been widely used in the detection of faults. This paper delves into the various faults and study of conventional and innovative techniques for induction motor faults with an identification of future research areas.

KEYWORDS

Artificial Neural Networks, Computer Simulation, Data Acquisition, Fast Fourier Transforms, Fault Diagnosis, Fuzzy Logic, Induction Motors, Parameter Estimation, Vibration Measurement, Wavelet Transforms

1. INTRODUCTION

Induction motors are the mainstay for every industry. However like any other machine, they will eventually fail because of heavy duty cycles, poor working environment, installation and manufacturing factors, etc. With escalating demands for reliability and efficiency, the field of fault diagnosis in induction motors is gaining importance. If the faults are not prognosticated beforehand, it may result in large revenue losses as well as pose threat to reliability and safety of operation. However, many methods have been proposed for fault detection and diagnosis, but most of the methods require a good deal of expertise to apply them successfully. Simpler approaches are needed to enable even amateurish operators with nominal knowledge of the system to scan the fault condition and make reliable decisions.

The induction motor is subjected to primary types of fault and related secondary faults. Fig.1 (a) classifies the sources of induction motor faults. In Fig. 1(b), the internal fault tree is depicted and Fig. 1(c) illustrates the external fault tree for an induction motor.

Broadly, an induction motor can develop either internal fault or external fault. With reference to the origin, a fault may be mechanical or electrical. Fault can be classified as stator fault or rotor fault depending on the location of the fault. Faults associated with the moving parts like bearing

and cooling faults are categorized as rotor faults [1]. Specifically, induction motor faults can be broadly classified into bearing failures, stator faults, rotor faults, air gap eccentricity, mechanical vibrations, etc. Fig. 2 illustrates the relative probability of occurrences of various faults in an induction machine [2].

This paper presents a detailed analysis of methods to detect induction motor faults and proposes future research areas. Systematic approaches must be exploited to predict incipient machine faults.

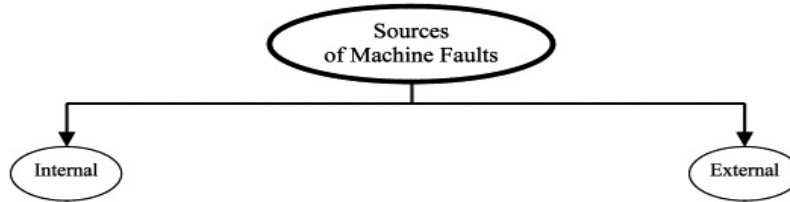


Fig.1(a) Sources of Machine Faults

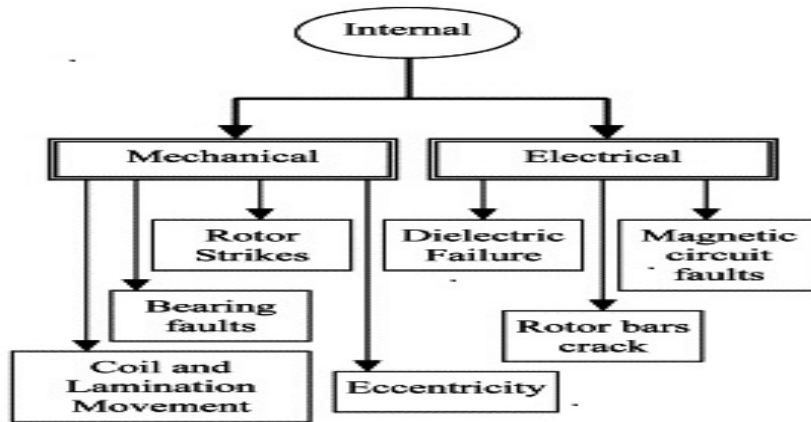


Fig. 1(b) Block Diagram Presentation of Internal Faults

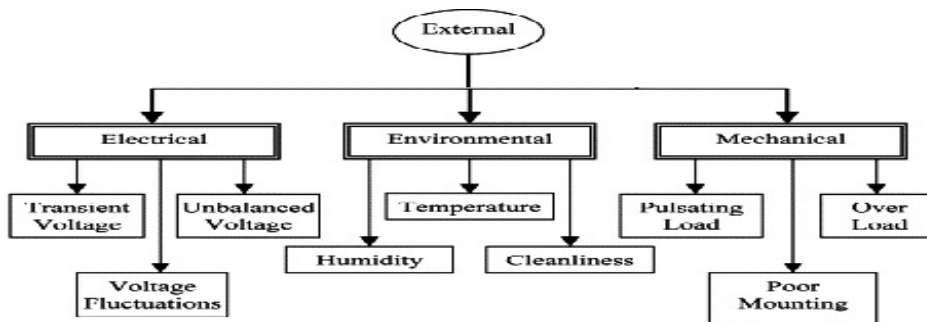


Fig. 1(c) Block Diagram Representation of External Faults

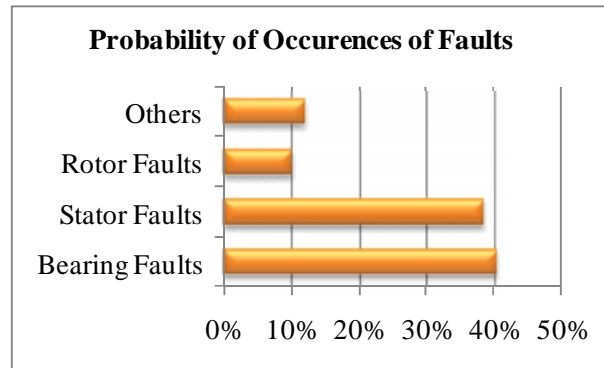


Fig.2. Faults by % in an Induction Motor

A typical diagnosis system [3] shown in Fig. 3 consists of a sensor assembly which provides the fault signal to a signal processing unit, which further sends its result to be analyzed by expert systems, where the corresponding fault is ultimately detected.

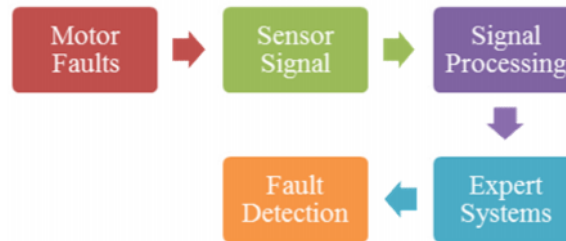


Fig. 3. On-Line Fault Monitoring of Induction Motor

Condition monitoring and fault diagnostics are usually implemented by investigating the corresponding anomalies in machine current, voltage and leakage flux. Other methods [4-5] including monitoring the core temperature, bearing vibration level and pyrolyzed products, have been reported to diagnose fault conditions such as insulation defects [6], partial discharge [7] and lubrication oil and bearing degradation [8].

Numerous induction motor fault techniques are based on Fast Fourier Transform Spectral Signature analysis [9-11], vibration analysis [12-13], temperature measurements [14-16], harmonic analysis of speed fluctuations [17-19], state or parameters estimation [20-22], either axial flux or air gap torque analysis [23-25], acoustic noise arrangement [26-27], magnetic field analysis [28-30], fuzzy logic and neural networks [31-33], etc.

2. INDUCTION MOTOR FAULTS

Profound efforts have been devoted to Induction motor fault diagnosis. Depending on the region of fault occurrence, induction motor faults are mainly put under the following five categories.

2.1. Bearing Faults

Generally, a rolling-element bearing is an arrangement of two concentric rings. A set of balls or rollers spin in raceways between the inner ring and outer ring. Bearing defects [34] may be categorized as “distributed” or “local”. Distributed defects include misaligned races, waviness, surface roughness and off-size rolling elements. Localized defects include spalls, pits and cracks

on the rolling surfaces. These localized defects create a series of impact vibrations at the instant when a running roller passes over the surface of a defect whose period and amplitude are calculated by the anomaly's position, speed and bearing dimension. Mechanical vibrations are produced by the flawed bearings. These vibrations are at the rotational speed of every component. The bearing dimensions and the rotational speed of the machine are used to determine the characteristic frequencies associated to the raceways and the balls or rollers. The condition of the bearing is ascertained by examining these frequencies. This task is accomplished using mechanical vibration analysis techniques.

2.2. Stator Faults

An induction motor is subjected to various stresses like thermal, electrical, mechanical, and environmental [35-37]. Most stator faults can be attributed to such stressful operating conditions. Faults in the stator winding such as turn-to-turn, coil-to-coil, open circuit, phase-to-phase and coil-to-ground [38], are some of the more prevalent and potentially destructive faults. If left undetected, these may eventually cause cataclysmic failure of the motor. The three main divisions discussed in [39] of stator faults are the following.

a) Frame :

- Vibration
- Circulating currents
- Earth faults
- Loss of coolants

b) Lamination:

- Core slackening
- Core hot spot

c) Stator windings faults:

- End winding portion (turn-to-turn faults , fretting of insulation, local damage to insulation, damage to connectors, discharge erosion of insulation, displacement of conductors, contamination of insulation by moisture, oil or dirt, cracking of insulation and so forth).
- Slot portion (insulation fretting, displacement of conductors).

2.3. Rotor Faults

Rotor faults [40] can be induced by electrical failures such as a bar defect or bar breakage or mechanical failures such as rotor eccentricity. The first fault occurs from thermal stresses, hot spots, or fatigue stresses during transient operations such as start-up, especially in large motors. A broken bar changes torque significantly and became dangerous to the safety and consistent operation of electric machines [41]. The second type of rotor fault is related to air gap eccentricity. This fault is a common effect related to a range of mechanical problems in induction motors such as load unbalance or shaft misalignment. Long-term load unbalance can damage the bearings and the bearing housing and influence air gap symmetry. Shaft misalignment means horizontal, vertical or radial misalignment between a shaft and its coupled load. With shaft misalignment, the rotor will be displaced from its normal position because of a constant radial force.

2.4. Eccentricity Faults

Unequal air gap between stator and rotor results in eccentricity [42] of induction motor. In general, air-gap eccentricity can be of two types: the static air-gap eccentricity and the dynamic air-gap eccentricity. A mixture of both forms, called mixed eccentricity [43] and the axial non uniformity of air gap, known as inclined eccentricity [44] have also been accounted. The minimal radial air-gap length is fixed in space for static air-gap eccentricity. On the contrary, the center of rotor and the center of rotation do not coincide for dynamic eccentricity. In this case, the position of minimum air gap is not fixed in space but rotates with the rotor. An erroneous positioning of the rotor or stator during the commissioning phase may give rise to static eccentricity. It may also be caused by stator core ovality. A cause of dynamic eccentricity can be a bent shaft, bearing wear and movement, or mechanical resonances at critical speeds.

2.5. Vibration Faults

Vibrations are natural processes in induction motors which are caused by the oscillations of mechanical parts of the motors. These oscillations are reflected in the external system attached with the machine shaft. Consequently, machine related frequency spectrum is generated which is unique for a healthy motor. Each fault in the motor changes the frequency component of the spectrum. This can be compared with the reference spectrum to perform fault detection and diagnosis.

3. FAULT DIAGNOSIS

The spectrum of supply current of an induction motor can be analyzed for the diagnosis of faults appearing in it. For a healthy motor, there will be no existence of backward rotating field and only the forward rotating magnetic field rotates at synchronous speed. In the occurrence of any fault, there will be a resultant backward rotating field in the air gap and the spectrum of stator current will change. In Table 1 various frequency components introduced in supply current spectrum due to faults [45] has been summarized. By monitoring the various frequencies in Table 1, it is possible to diagnose the corresponding motor faults. Nevertheless, it has been observed [46-47] that these frequency components cannot be treated as exact signs of occurrence of motor faults as these frequencies can be detected in the spectrum of even healthy motors due to unavoidable manufacturing symmetries and misalignment etc., Many techniques [48-49] have been proposed and developed over years that provide a good measure of occurrence of faults in induction motors.

Table 1. Frequency Components of Induction Motor Faults

Faults	Frequency
Bearing Fault	$f_{cbf} = f_s \pm n f_{rc} $ $f_{rc} = \frac{N_b f_s}{2} \left[1 \pm \frac{D_b}{D_p} \cos \theta \right]$
Rotor Fault	$f_{cbrrf} = f_s \left[n \frac{(1-s)}{P} \pm s \right]$
Eccentricity	$f_{ce} = f_s \left[(n R_s \pm O_{re}) \frac{(1-s)}{P} \pm O_{smh} \right]$

where,

f_{cbf}	=	components generated by bearing faults
f_s	=	supply frequency
n	=	1,2,3... [Integral values]
f_{rc}	=	characteristics race frequencies
N_b	=	number of bearing balls
D_b	=	ball diameter
D_p	=	bearing pitch diameter
	=	contact angle of the ball on the races
f_{cbrrf}	=	components generated by broken rotor faults
P	=	number of pole-pairs
s	=	per-unit slip
f_{ce}	=	components associated with eccentricity
O_{re}	=	rotating eccentricity order
O_{smh}	=	stator MMF harmonic order
R_s	=	number of rotor slots

3.1. Detection of Bearing Faults

3.1.1. Vibration Spectrum Analysis

The forces occurring in the rolling element bearing in electrical machines create high frequency components of vibration. During normal conditions, these high frequency components are mainly because of friction but in case of a defect in bearings shock pulses can also be found due to breaks in lubrication layer between the friction surfaces. This method analyses the vibration spectrum of an induction machine using piezoelectric accelerometer which works on Fast Fourier Transform to extract from a time domain signal the frequency domain representation.

For instance, a 0.75 kW induction motor with 6202 ball bearing type having number of balls $N = 8$, is taken for experimentation [50]. The harmonic vibration spectrum of the healthy motor and that with defective bearing is analyzed individually. Fig. 4(a) and Fig. 4(b) portray the vibration

amplitudes for the analyzed frequencies, $f_1=100\text{Hz}$, $f_2=152\text{Hz}$, rotational frequency $f=fr=50\text{Hz}$ and sideband 150-300Hz, for the motor with healthy bearing and defective bearing respectively. The vibration amplitude for faulty motor is bigger than that of a healthy motor.

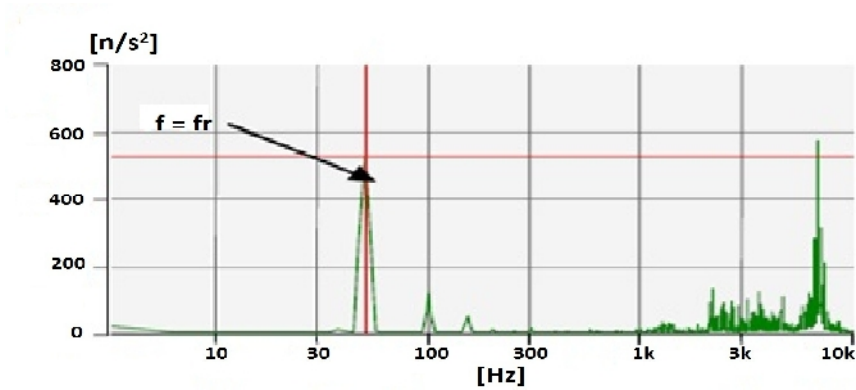


Fig. 4(a). Harmonic Vibration Spectra of Induction Motor with Good Bearing

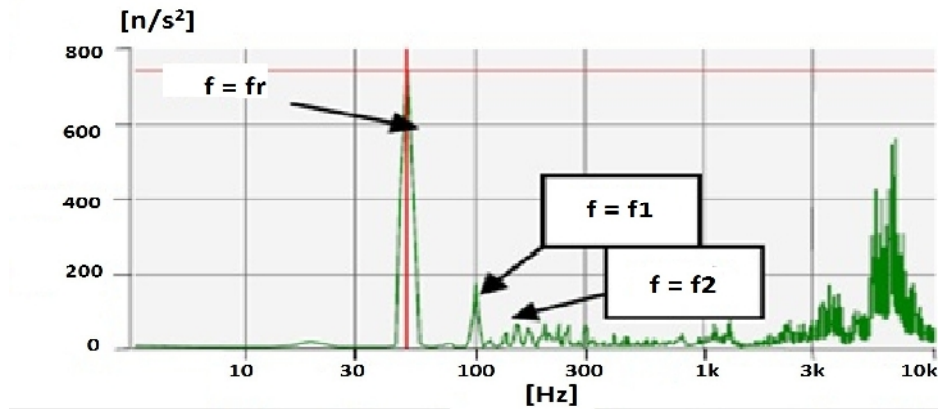


Fig. 4(b). Harmonic Vibration Spectra of Induction Motor with Bad Bearing

3.1.2. Dynamic Model to Simulate Bearing Faults and Analysis of Experimental Observation:

The dynamic simulation of a motor running with faults in the bearing inner race is presented and a winding function approach is applied to the model of an induction motor with mixed eccentricities due to inner race faults. A spectral analysis of electromagnetic torque developed by the simulated motor is compared with those of vibrations resulting from experiments on motor with faulty bearing [51]. Fig. 5(a) and Fig. 5(b) elaborate the power spectral density and analysis of vibration signal in frequency domain. The spectrum magnitude is then standardized to have a bandwidth of 0.2 Hz. This entails that for any fault frequency the magnitude of the power spectral density seeps out on bordering frequency bins at + 0.2 Hz from the faulty frequency.

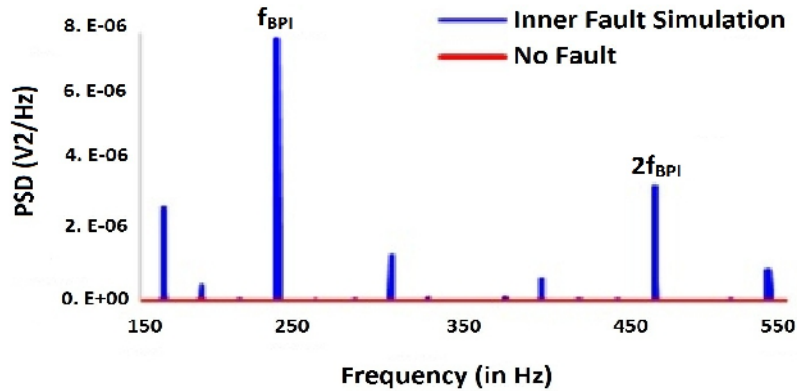


Fig.5(a). Frequency Spectrum of Electromagnetic Torque of Dynamic Simulation Motor with Bearing Fault

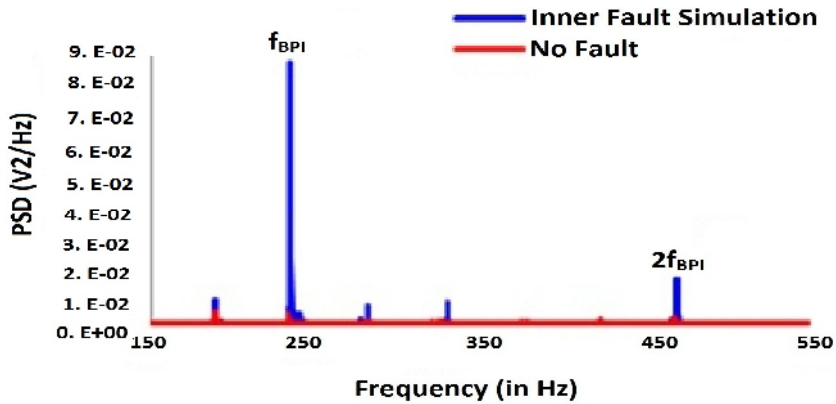


Fig.5(b). Characteristic Frequencies in the Spectral Analysis of Vibration of Induction Motor with Inner Race Bearing Fault

3.2. Detection of Stator Faults

3.2.1. Using Park Vector Approach and Complex Wavelets

The impact of stator fault on machine current can be examined through Park vector transformation approach. The locus of instantaneous spatial vector sum of the three phase stator currents forms the basis for Park's vector. Generally, a three phase induction motor does not involve the connection to the neutral. It only involves the connection with the three phase mains. Hence, the mains current has no homopolar current. A two dimensional representation of three phase current of induction motor can be achieved using Park's Transform. As a function of mains phase variable (I_a, I_b, I_c), the Park's vector components (I_D, I_Q) are:

$$I_D = \sqrt{\frac{2}{3}}I_a - \frac{1}{\sqrt{6}}I_b - \frac{1}{\sqrt{6}}I_c$$

$$I_Q = \frac{1}{\sqrt{2}}I_b - \frac{1}{\sqrt{2}}I_c$$

This maps a circle. This circle has its centre at the origin (0, 0) of the coordinates. This locus is distorted by stator winding faults and thus provides easy fault diagnosis. Besides making analysis and calculations easier, Park's Transform scores over traditional methods in terms of being economical, especially for small and medium-sized motors. Also it can diagnose the faults without requiring access to motor.

In order to investigate the proposed technique [52], a 3 phase, 4 pole induction motor model with 36 stator slots and 55 turns per slot is simulated. The 3 phase supply currents are measured and Park vector currents are calculated using Park's Transform. Considering no fault in the stator, the motor current's Park vector is presented in Fig. 6(a). In case of a stator fault, the motor current's Park vector is shown in Fig. 6(b). The current Park's vector for a healthy motor corresponds to a circle whereas for a faulty one, the shape distorts to an ellipse depending upon the amount of fault level. Simulation and experimental results are finally analyzed using complex wavelets.

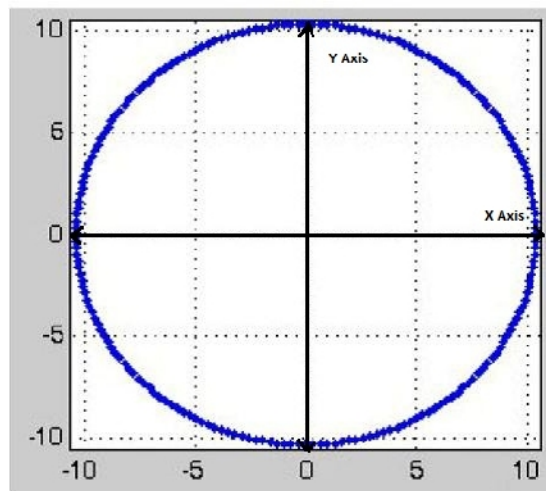


Fig.6(a). Motor Current's Park's Vector Representation at Healthy Case

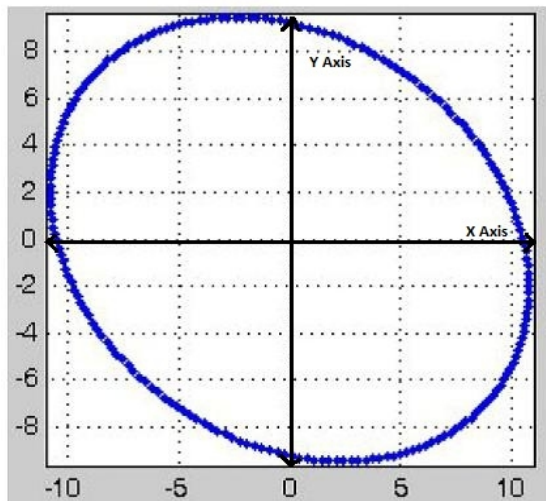


Fig.6(b). Motor Current's Park's Vector Representation at Faulty Case

3.3. Detection of Rotor Faults and Eccentricity

3.3.1. Motor Current Signature Analysis (MCSA)

Current harmonics in the stator current are analyzed by MCSA [53-59]. These harmonics are caused by new rotating flux components on account of a fault. It needs only one current sensor and is based on signal processing techniques like FFT [60]. The equipment set up for measuring motor current is shown in Fig. 7. Data acquisition is achieved by performing FFT on the stator current. The data obtained after FFT is normalized as a function of the first harmonic amplitude is then analyzed. Fig. 8(a) and Fig. 8(b) illustrates FFT with initial condition of rotor bars and with 3 broken rotor bars respectively.

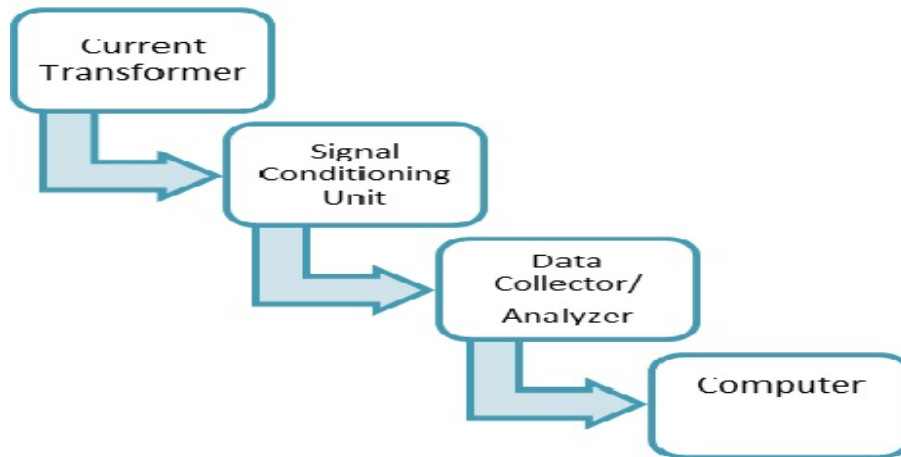


Fig.7 Set-Up for Measuring Motor Current

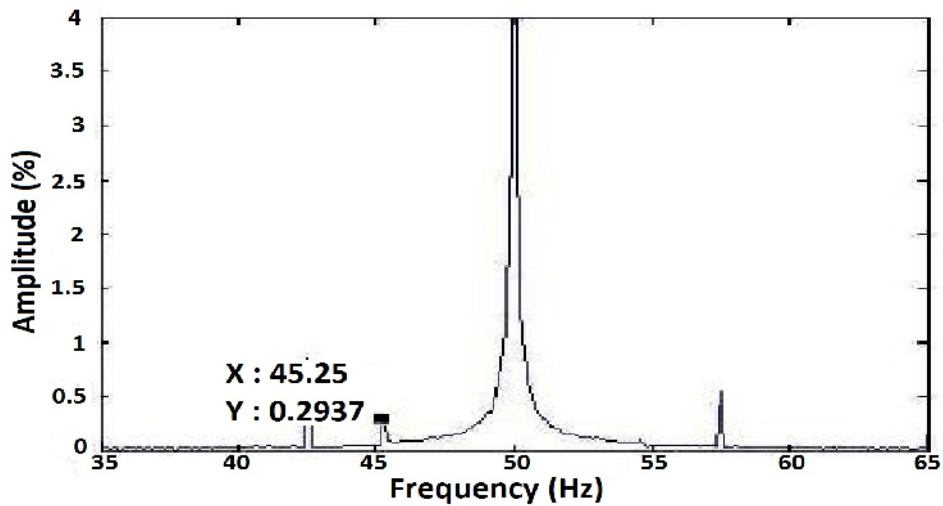


Fig. 8(a) FFT with initial condition for broken bars

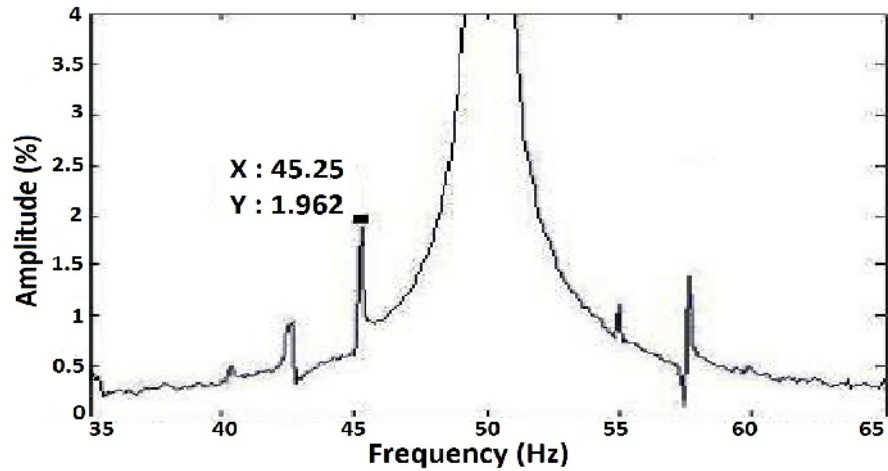


Fig. 8 (b) FFT with 3 broken bars

Table 2 indicates the percentage amplitude for harmonics with different number of broken rotor bars. Evidently, the harmonic contents increase with increase in fault level i.e. rise of count of broken rotor bars.

Table 2. Results of Broken Bar Faults

Frequency(Hz)	Amplitude%	No. of Broken Bars
45.25	0.2937	0
45.25	1.028	1
45.25	1.83	2
45.25	1.962	3

Similarly, eccentricity also causes a change in the FFT of induction motor. Fig. 9(a) and Fig. 9(b) illustrate the FFT with initial condition of rotor bars and with 87.3% eccentricity respectively.

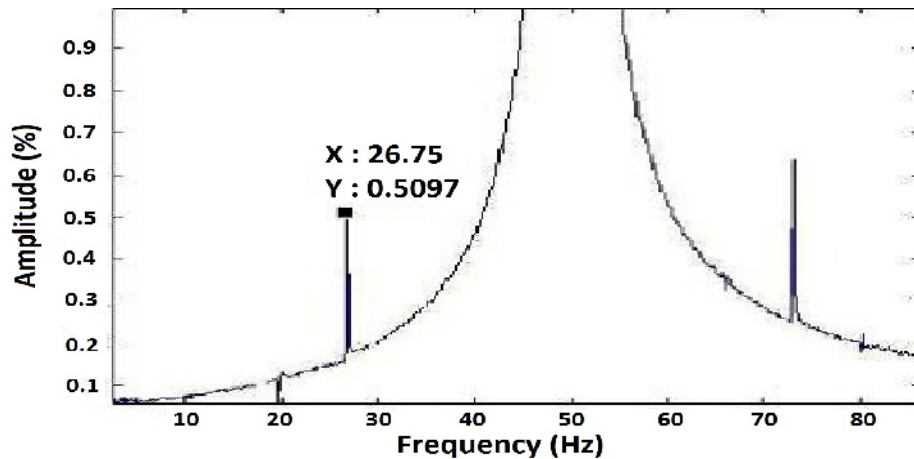


Fig. 9 (a) FFT with initial condition of Rotor's eccentricity

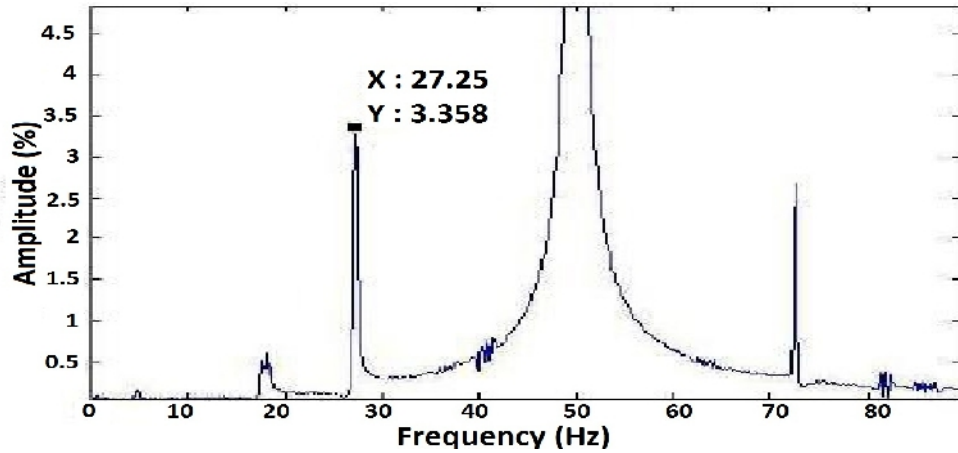


Fig. 9 (b) FFT with 87.3% of Rotor's eccentricity

Table 3 specifies the percentage amplitude for harmonics with varying levels of eccentricity. Markedly, the harmonic contents increase with increase in fault level i.e. increase of eccentricity.

Table 3. Results of eccentricity

Eccentricity (%)	Amplitude%
0	0.59
44.5	1.96
87.3	4.94

3.3.2. Intelligent Techniques

Several Intelligent techniques like Fuzzy logic systems [61-63], Artificial Neural Networks [64-66], Neuro-Fuzzy Systems [67-69] etc. have been elaborately discussed for induction motor condition monitoring. Usually, any Artificial Intelligence (AI) based diagnostic technique has three prime steps- i) Signature extraction ii) Fault detection and iii) Fault severity estimation. In Fig. 10, a schematic of Neural Networks for condition monitoring of an induction motor is presented [70].

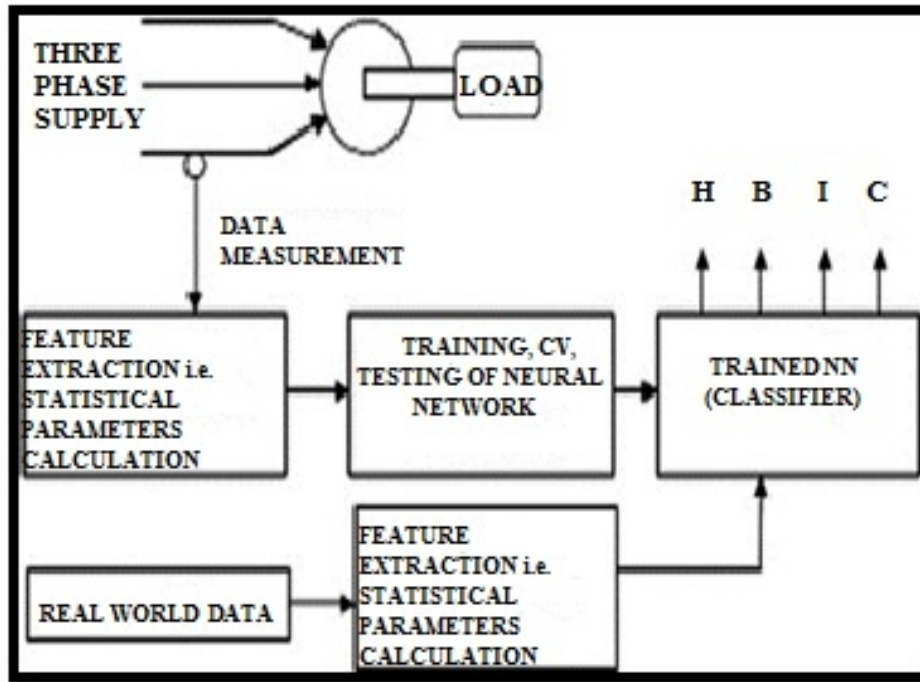


Fig. 10 Neural Network Schematic for Condition Monitoring of Induction Motor

Apart from these techniques, some other methods for the incipient fault detection of induction motor have found a mention in other literature [71-77]. Table 4 presents an elaborate comparison of several fault detection techniques and the faults generally detected by them.

Table 4. Comparison of various fault detection techniques

Fault Detection Techniques	Detected Faults
MCSA	Bearing, Rotor, Stator and Vibration Faults
Park's Transform	Bearing and Stator Faults
Artificial Neural Networks	Bearing and Rotor Faults
Wavelet Analysis	Bearing, Rotor, Stator and Vibration Faults
Finite Element Method	Rotor, Stator and Vibration Faults
Vibration Testing and Analysis	Bearing and Vibration Faults
Concordia Transform	Bearing Faults
External Magnetic Field Analysis	Rotor Faults
Multiple Reference Frames Theory	Eccentricity
Power Decomposition Technique	Stator Faults
KU Transformation Theory	Stator Faults
Zero Crossing Time Method	Stator Faults
Modal Analysis Method	Vibration Faults

4. SCOPE OF FUTURE WORK

Expert systems can be employed for fault diagnosis using rules obtained from the connection weight of a supervised neural network and rules extracted from heuristic knowledge. This combination of Artificial Neural Networks and expert knowledge may enhance the monitoring system for diagnosis.

Moreover, a data base for vibration harmonics using experimental and theoretical investigations for various sizes and design standard of three phase induction motors can be created. Through this database, a new standard for vibration can be established instead of the traditional one, which depends upon RMS velocity of vibration rather than harmonic amplitude.

5. CONCLUSION

This paper attempts to summarize recent developments in induction motor fault diagnostics and prognostics. Various techniques, models and algorithms have been analyzed and the suitability of a particular technique for a specific fault diagnosis has been focused upon in this paper.

REFERENCES

- [1] G.K. Singh and Sa'ad Ahmed Saleh Al Kazzaz, "Induction Machine Drive Condition Monitoring and Diagnostic Research-A Survey", *Electric Power Systems Research*, vol. 64, pp. 145-158, 2003.
- [2] M. L. Sin, W.L. Soong and N. Ertugrul, "Induction Machine On-Line Condition Monitoring and Fault Diagnosis - A Survey", AUPEC2003, Australasian Universities Power Engineering Conference, Christchurch, New Zealand, pp. 1-6, 2003.
- [3] Neelam Mehala and Ratna Dahiya "Condition Monitoring and Fault Diagnosis of Induction Motor Using Motor Current Signature Analysis", A Ph.D Thesis submitted to the Electrical Engineering Department, National Institute of Technology, Kurushetra, India, October, 2010.
- [4] P. J. Tavner and J. Penman, "Condition Monitoring of Electrical Machines", Letchworth, England: Research Studies Press Ltd., 1987.
- [5] Shuo Chen, "Induction Machine Broken Rotor Bar Diagnostics Using Prony Analysis", A Ph.D Thesis submitted to the School of Electrical and Electronic Engineering of the University of Adelaide, April 2008.
- [6] Olav Vaag Thorsen and Magnus Dalva, "A survey of Faults on Induction Motors in Offshore Oil Industry, Petrochemical Industry, Gas terminals, and Oil Refineries", *IEEE Transactions on Industry Applications*, vol. 31, no. 5, September/October 1995.
- [7] William Torbat Thomson and Mark Fenger, "Industrial Application of Current Signature Analysis to diagnose Faults in 3-Phase Squirrel Cage Induction Motors", *Pulp and Paper Industry Technical Conference, Conference Record of 2000 Annual*, pp. 205-211, 19-23 June, 2000.
- [8] Andrew M. Knight and Sergio P. Bertani, "Mechanical Fault Detection in a Medium-Sized Induction Motor Using Stator Current Monitoring", *IEEE Transactions on Energy Conversion*, vol. 20, no.4, pp. 753-760.
- [9] Neelam Mehala and Ratna Dahiya, "Condition Monitoring Methods, Failure Identification and Analysis for Induction Machines", *International Journal of Circuits, Systems and Signal Processing*, vol. 3, no. 1, pp. 29-35, 2009.
- [10] Mohamed El Hachemi Benbouzid, "A Review of Induction Motors Signature Analysis as a Medium for Faults Detection", *IEEE Transactions on Industrial Electronics*, vol.47, no.5, pp. 984-993, October 2000.
- [11] Castelli Marcelo, Juan Pablo Fossatti and Jose Ignacio Terra, "Fault Diagnosis of Induction Motors Based on FFT", *Fourier Transform - Signal Processing*, ISBN: 978-953-51-0453-7, InTech, 2012.
- [12] Mounir Djeddi, Pierre Granjon and Benoit Lepretre, "Bearing Fault Diagnosis in Induction Machine Based on Current Analysis Using High-Resolution Technique", *Power Electronics and Drives*, 2007.

- SDEMPED 2007. IEEE International Symposium on Diagnostics for Electric Machines, 10.1109/DEMPED.2007.4393066, 2007, pp. 23-28, 2012.
- [13] Van Tuan Do and Ui-Pil Chong, "Signal Model-Based Fault Detection and Diagnosis for Induction Motors Using Features of Vibration Signal in Two-Dimension Domain", *Strojnicki vestnik - Journal of Mechanical Engineering*, vol. 57, no. 9, pp. 655-666, 2011.
- [14] Aderiano M. da Silva, "Induction Motor Fault Diagnostic and Monitoring Methods", A Thesis submitted to the Faculty of the Graduate School, Marquette University, Milwaukee, Wisconsin, May 2006.
- [15] Jordi Cusidó i Roura and Jose Luis Romeral Martínez (2011), "Transient Analysis and Motor Fault Detection using the Wavelet Transform", *Discrete Wavelet Transforms - Theory and Applications*, Dr. Juuso T. Olkkonen (Ed.), ISBN: 978-953-307-185-5, InTech.
- [16] El Houssin El Bouchikhi, Vincent Choqueuse, Mohamed Benbouzid and Jean Fred'eric Charpentier, "Induction Machine Bearing Failures Detection Using Stator Current Frequency Spectral Subtraction", 2012 IEEE International Symposium on Industrial Electronics (ISIE), 10.1109/ISIE.2012.6237265, pp. 1228-1233, 2012 .
- [17] B. G. Gaydon, "An instrument to detect induction motor rotor circuit defects by speed fluctuation measurements," in *Proc. Electric Test Measuring Instrumentation—Testmex Conf. Paper*, pp. 5–8, 1979.
- [18] J. R. Stack, T. G. Habetler and R. G. Harley, "Effects of machine speed on the development and detection of rolling element bearing faults," *IEEE Power Electron. Lett.*, vol. 1, no. 1, pp. 19–21, Mar. 2003.
- [19] C. J. Diste and R. Schiferl, "Using temperature, voltage, and/or, speed measurements to improve trending of induction motor rms currents in process control and diagnostics," in *Proc. IEEE Industry Applications Soc. Annual Meeting Conf.*, vol. 1, pp. 312–318, 1994.
- [20] K. R. Cho, J. H. Lang and S. D. Umans, "Detection of broken rotor bars in induction motors using state and parameter estimation," *IEEE Trans. Ind. Appl.*, vol. 28, no. 3, pp. 702–709, May/June. 1992.
- [21] F. Filippetti, G. Franceschini, C. Tassoni and P. Vas, "Broken bar detection in induction machines: Comparison between current spectrum approach and parameter estimation approach," in *Proc. IEEE Industry Applications Soc. Annual Meeting Conf.*, Denver, vol. 1, pp. 95-102, 1994.
- [22] P. Vas, "Parameter Estimation, Condition Monitoring, and Diagnosis of Electrical Machines", Oxford, U.K.: Clarendon, 1993.
- [23] J. Penman, H. G. Sedding, B. A. Lloyd and W. T. Fink, "Detection and location of interturn short circuits in the stator windings of operating motors," *IEEE Trans. Energy Convers.*, vol. 9, no. 4, pp. 652–658, Dec.1994.
- [24] H. Henao, C. Demian and G. A. Capolino, "A frequency-domain detection of stator winding faults in induction machines using an external flux sensor," *IEEE Trans. Ind. Appl.*, vol. 39, no. 5, pp. 1272–1279, Sep./Oct. 2003.
- [25] J. F. Bangura, R. J. Povinelli, N. A. O. Demerdash and R. H. Brown, "Diagnostics of eccentricities and bar/end-ring connector breakages in polyphase induction motors through a combination of time-series data mining and time-stepping coupled FE- state-space techniques," *IEEE Trans. Ind. Appl.*, vol. 39, no. 4, pp. 1005–1013, Jul./Aug. 2003.
- [26] A. Ganguly, Manoj K Kowar and H. Chandra, "Preventive Maintenance of Rotating Machines Using Signal Processing" Techniques", *International Journal of Soft Computing and Engineering (IJSCE)* ISSN: 2231-2307, vol.2, no. 2, May 2012.
- [27] J. Ellison , C. J. Moore and S. J. Yang, "Methods of measurement of acoustic noise radiated by an electric machine", *Proceeding of IEEE*, pp. 174-184, 1971.
- [28] J.Faiz and B.M.Ebrahimi, "Mixed Fault Diagnosis in Three-Phase Squirrel-Cage Induction Motor Using Analysis of Air-Gap Magnetic Field", *Progress In Electromagnetics Research (PIER)*, vol. 64, pp. 239–255, 2006.
- [29] A. M.Trzynadlosky, "Diagnostic of mechanical abnormalities in induction motor using instantaneous electrical power", *Conference Proceedings of The 1997 International Electric Machines and Drives*, pp. 91–93, 1997.
- [30] A. Ceban, V. Fireteanu, R. Romary, R. Pusca and P. Taras, "Finite Element Diagnosis of Rotor Faults in Induction Motors based on Low Frequency Harmonics of the Near-Magnetic Field", *Power Electronics & Drives (SDEMPED)*, 2011 IEEE International Symposium on Diagnostics for Electric Machines, 10.1109/DEMPED.2011.6063623, 2011, pp. 192-198.

- [31] P. Vas, *Artificial—Intelligence-Based Electrical Machines and Drives: Applications of Fuzzy, Neural, Fuzzy-Neural and Genetic Algorithm Based Techniques*. New York: Oxford Univ. Press, 1999.
- [32] M. Y. Chow, *Methodologies of Using Neural Network and Fuzzy Logic Technologies for Motor Incipient Fault Detection*, Singapore: World Scientific, 1997.
- [33] F. Zidani, M. E. H. Benbouzid, D. Diallo and M. S. Nait-Said, "Induction motor stator faults diagnosis by a current Concordia pattern-based fuzzy decision system," *IEEE Trans. Energy Convers.*, vol. 18, no. 4, pp. 469–475, Dec. 2003.
- [34] Jafar Zarei, Javad Poshtan, "Bearing Fault Detection In Induction Motor Using Pattern Recognition Techniques", 2nd IEEE International Conference on Power and Energy (PECon 08), December 1-3, 2008, Johor Baharu, Malaysia, pp. 749-753.
- [35] A. H. Bonnet, "Cause and analysis of stator and rotor failures in three-phase squirrel-cage induction motors," *IEEE Trans. Ind. Appl.*, vol. 28, no. 4, pp. 921–437, Jul./Aug. 1992.
- [36] A. H. Bonnett and G. C. Soukup, "Rotor failures in squirrel cage induction motors," *IEEE Trans. Ind. Appl.*, vol. IA-22, no. 6, pp. 1165–1173, Nov./Dec. 1986.
- [37] P. J. Tanver and J. Penman, "Condition Monitoring Electrical Machines", Hertfordshire, U.K.: Research Studies Press, 1987.
- [38] M. Arkan, D. K. Perović and Punsworth, "Online stator fault diagnosis in induction motors", *IEEE Proc-Electr. Power Appl.* vol. 148, no. 6, November 2001.
- [39] Arfat Siddhiqui, G. S. Yadava and Bhim Singh, "A Review of Stator Fault Monitoring Techniques of Induction Motors", *IEEE Transactions on Energy Conversion*, vol. 20, no. 1, March 2005.
- [40] S. Hamdani, O. Touhami, R. Ibtouen and M. Fadel, "Neural Network technique for induction motor rotor faults classification –Dynamic eccentricity and broken bar faults", *Power Electronics & Drives (SDEMPED)*, 2011 IEEE International Symposium on Diagnostics for Electric Machines, 10.1109/DEMPED.2011.6063689, 2011, pp. 626–631.
- [41] A. H. Bonnett 'Root Cause AC Motor Failure Analysis with a Focus on Shaft Failures' *IEEE transactions on industry applications*, vol. 36, no. 5, september/october 2000.
- [42] Subhasis Nandi, Thirumarai Chelvan Ilamparithi, Sang Bin Lee and Doosoo Hyun, "Detection of Eccentricity Faults in Induction Machines Based on Nameplate Parameters", *IEEE Transactions on Industrial Electronics*, vol. 58, no. 5, May 2011.
- [43] S. Nandi, R. M. Bharadwaj, and H. A. Toliyat, "Performance analysis of a three phase induction motor under incipient mixed eccentricity condition," *IEEE Trans. Energy Convers.*, vol. 17, no. 3, pp. 392–399, Sep. 2002.
- [44] X. Li, Q. Wu, and S. Nandi, "Performance analysis of a three-phase induction machine with inclined static eccentricity," *IEEE Trans. Ind. Appl.*, vol. 43, no. 2, pp. 531–541, Mar./Apr. 2007.
- [45] Pedro Vicente Jover Rodriguez, Marian Negrei and Antero Arkkio, "A General Scheme for Induction Motor Condition Monitoring", *SDEMPED 2005, International Symposium on Diagnostics for Electric Machines, Power Electronics and Drives Vienna, Austria, 7-9 September 2005*.
- [46] G. B. Kliman, R. A. Koegl, J. Stein and R. D. Endicott, "Noninvasive Detection of Broken Rotor Bars in Operating Induction Motors", *IEEE Trans. Energy Conversion*, vol. 3, pp. 873-879, December 1988.
- [47] Joksimovic G. M. and Penman J., "The Detection of Inter-Turn Short Circuits in the Stator Winding of Operating Motors", *IEEE Transactions on Industrial Applications*, vol. 47, no. 5, pp. 1078-1084, October 2000.
- [48] Lovi Kaushal Agrawal and SBL Tripathi, "Study of Fault Detecting Techniques in Electrical Machine", *VSRD-IJEECE*, vol. 1, no. 8, pp. 478-489, 2011.
- [49] YE Zhongming and WU Bin, "A Review on Induction Motor Online Fault Diagnosis", *The Third International Power Electronics and Motion Control Conference, 2000, Proceedings. IPEMC 2000*, 10.1109/IPEMC.2000.883050, vol. 3, pp. 1353-1358, 2000.
- [50] Mariana Iorgulescu, Robert Beloiu, "Vibration and Current Monitoring for Fault's Diagnosis of Induction Motors", *Annals of the University of Craiova, Electrical Engineering series*, no. 32, ISSN 1842-4805, 2008.
- [51] Dr. Ariunbolor Purvee and Dr. Gautam Banerjee, "Dynamic Simulation and Experimental Results of Bearing Faults of Squirrel Cage Induction Motor", *2012 IEEE International Conference on Condition Monitoring and Diagnosis*, 23-27 September 2012, Bali, Indonesia, pp. 718-722.
- [52] Dionysios V. Spyropoulos and Epaminondas D. Mitronikas, "Induction Motor Stator Fault Diagnosis Technique Using Park Vector Approach and Complex Wavelets", *Electrical Machines (ICEM), 2012 XXth International Conference on*, 2-5 September, pp. 1730-1734, 2012.

- [53] Ruiming Fang and Hongzhong Ma, "Application of MCSA and SVM to Induction Machine Rotor Fault Diagnosis", Proceedings of the 6th World Congress on Intelligent Control and Automation, June 21 - 23, 2006, Dalian, China.
- [54] Chiara Boccaletti, Claudio Bruzzese, Onorato Honorati and Ezio Santini, "Rotor Bars Breakage in Railway Traction Squirrel Cage Induction Motors and Diagnosis by MCSA Technique Part II : Theoretical Arrangements for Fault-Related Current Sidebands", SDEMPED 2005 - International Symposium on Diagnostics for Electric Machines, Power Electronics and Drives, Vienna, Austria, 7-9 September 2005.
- [55] A Alwodai, F Gu and A D Ball, "A Comparison of Different Techniques for Induction Motor Rotor Fault Diagnosis", 25th International Congress on Condition Monitoring and Diagnostic Engineering, IOP Publishing, Journal of Physics: Conference Series 364, 012066, 2012.
- [56] Neelam Mehala and Ratna Dahiya, "Motor Current Signature Analysis and its Applications in Induction Motor Fault Diagnosis", International Journal of Systems Applications, Engineering & Development, vol. 2, no. 1, 2007.
- [57] Alan Miletic and Mirko Cettolo, "Frequency Converter Influence on Induction Motor Rotor Faults Detection Using Motor Current Signature Analysis – Experimental Research", Symposium on Diagnostics for Electric Machines, Power Electronics and Drives, Atlanta, GA, USA, 24-26 August 2003.
- [58] D. M. Sonje and R. K. Munje, "Rotor Cage Fault Detection in Induction Motors by Motor Current Signature Analysis", IJCA Proceedings on International Conference in Computational Intelligence (ICCA2012), no. 2, 2012.
- [59] S.Guedidi, S.E.Zouzou, W.Laala, M.Sahraoui and K.Yahia, "Broken Bar Fault Diagnosis of Induction Motors Using MCSA and Neural Network", 8th IEEE Symposium on Diagnostics for Electrical Machines Power Electronics Drives, no. 1, pp. 632-637, 2011.
- [60] José Ignacio Terra, Marcelo Castelli, Juan Pablo Fossati, Marcos Andrade, Analía Conde and Miguel Martínez-Iturralde, "Faults Detection and Remote Monitoring System for Induction Motors using MCSA Technique".
- [61] Sinan Altug, Mo-Yuen Chow and H. Joel Trussell, "Fuzzy Inference Systems Implemented on Neural Architectures for Motor Fault Detection and Diagnosis", IEEE Transactions on Industrial Electronics, vol. 46, no. 6, December 1999.
- [62] Fatiha Zidani, Demba Diallo, Mohamed El Hachemi Benbouzid and Rachid Naït-Saïd, "A Fuzzy-Based Approach for the Diagnosis of Fault Modes in a Voltage-Fed PWM Inverter Induction Motor Drive", IEEE Transactions on Industrial Electronics, vol. 55, no. 2, February 2008.
- [63] Mohamed A. Awadallah and Medhat M. Morcos, "Application of AI Tools in Fault Diagnosis of Electrical Machines and Drives—An Overview", IEEE Transactions on Energy Conversion, vol. 18, no. 2, June 2003.
- [64] Paul V. Goode and MO-pen Chow, "Using a Neural/Fuzzy System to Extract Heuristic Knowledge of Incipient Faults in Induction Motors: Part I-Methodology", IEEE Transactions on Industrial Electronics, vol. 42, no. 2, April 1995.
- [65] Mo-yuen Chow, Robert N. Sharpe, and James C. Hung, "On the Application and Design of Artificial Neural Networks for Motor Fault Detection-Part I", IEEE Transactions on Industrial Electronics, vol. 40, no. 2, April 1993.
- [66] Arfat Siddique, G.S.Yadava and Bhim Singh, "Status Review On Neural / Fuzzy Logic Techniques For Induction Motor Condition Monitoring".
- [67] Y.Zhongming, W.Bin and A.R.Sadeghian, "Electrical Machine Fault Detection using Adaptive Neuro-Fuzzy Inference", Proceedings in Joint 9th IFSA World Congress and 20th NAFIPS World Congress, pp.390-394, 2001.
- [68] R.M.Tallam, T.G.Habetler and R.G.Harley, "Continual on-line training of neural networks with applications in electric machines fault diagnosis", IEEE 32nd Power Electronics Specialists Conference, pp.2224-2228, 2001.
- [69] D.T.Pham and P.T.N.Pham, "Artificial Intelligence in Engineering", Intl. J. of Machine Tools & Manufacture, vol.39, pp. 937-949, 1999.
- [70] Vilas N. Ghate and Sanjay V. Dudul, "Optimal MLP neural network classifier for fault detection of three phase induction motor", Expert Systems with Applications, vol.37, pp. 3468–3481, 2010.
- [71] Izzet Y O' Nel, K Burak Dalci and I'brahim Senol, "Detection of bearing defects in three-phase induction motors using Park's transform and radial basis functionneural networks", Sadhana vol. 31, Part 3, June 2006, pp. 235–244, June 2006.

- [72] Izzet Yilmaz O' nel and Mohamed El Hachemi Benbouzid, "Induction Motor Bearing Failure Detection and Diagnosis: Park and Concordia Transform Approaches Comparative Study", IEEE/ASME Transactions on Mechatronics, vol. 13, no. 2, April 2008.
- [73] Kyusung Kim and Alexander G. Parlos, "Induction Motor Fault Diagnosis Based on Neuropredictors and Wavelet Signal Processing", IEEE/ASME Transactions on Mechatronics, vol. 7, no. 2, June 2002.
- [74] S. M. A. Cruz, H. A. Toliyat and A. J. M. Cardoso "Diagnosis of Stator, Rotor and Airgap Eccentricity Faults in Three-Phase Induction Motors Based on the Multiple Reference Frames Theory", Industry Applications Conference, 2003. 38th IAS Annual Meeting, 2003 , 10.1109/IAS.2003.1257725, Vol. 2, pp. 1340-1346.
- [75] Andrian Ceban, Remus Pusca, and Raphaël Romary, "Study of Rotor Faults in Induction Motors Using External Magnetic Field Analysis", IEEE Transactions on Industrial Electronics, vol. 59, no. 5, May 2012.
- [76] Hongzhong Ma, Huamin Li, Weifang Xie and Fen Chen, "Vibration Research on Winding Faults of Induction Motor Based on Experiment Modal Analysis Method", Hohai University, Nanjing, 210098, China. International Power Engineering Conference, 2007. IPEC 2007, 2007, pp. 366-370
- [77] F. Babaa, A. Khezzar, M. Boucherma, A. L. Nemmour , "Condition monitoring of stator faults in induction motors: Part I— Analytical investigation on the effect of the negative voltage Sequence", ACEMP '07, International Aegean Conference on Electrical Machines and Power Electronics, 2007. 10.1109/ACEMP.2007.4510503, 2007, pp. 205-210.

Authors

Partha S. Bhowmik (M'03) received the B.E. degree in Electrical Engineering from National Institute of Technology, Agartala, India in 2000, and the M. Tech. degree from the University College of Technology, University of Calcutta, India in 2002. Currently, he is employed as an Assistant Professor in Electrical Engineering Department, National Institute of Technology, Durgapur. His current research includes in energy system engineering and advanced signal processing applications in electrical machines & power system engineering.



Sourav Pradhan was born in Midnapore, India in 1992. He is pursuing B.Tech Degree in Electrical Engineering from National Institute of Technology Durgapur. His current research interests include Electrical Machines, Power Systems, Control Systems, Embedded Systems and Power Electronics.



Mangal Prakash was born in Ara, India in 1992. He is pursuing B.Tech Degree in Electrical Engineering from National Institute of Technology Durgapur. His current research interests include Electrical Machines, Power Systems and Control Systems.

