

New country records for Neotropical Cerambycidae (Insecta: Coleoptera)

Nuevos registros de país para Cerambycidae (Insecta: Coleoptera) neotropicales

Gino Juárez-Noé^{1,3*}  and Christoffer Fägerström^{2,4} 

¹Piura district, post office 20001, Piura Region, Peru. ²Biological Museum, Lund University, Kontaktvägen 10, 223 62 Lund, Sweden. ✉ norbiol@hotmail.com*

ZooBank: urn:lsid:zoobank.org:pub:CDEF9FBE-2F3D-4A4B-9F34-F2588060C607
<https://doi.org/10.35249/rche.50.4.24.17>

Abstract. Based on the examination of Cerambycidae material deposited in the entomological collection of the Biological Museum of Lund University (Sweden), new country records are provided for *Pronuba incognita* Hovore & Giesbert, 1990 (Colombia), *Eriphus bisignatus* (Germar, 1824) (Paraguay), *Stenolis inclusa* (Bates, 1885) (Colombia), *Aegomorphus bivittus* (White, 1855) (Suriname), *Colobothea emarginata* (Olivier, 1795) (Paraguay), *Colobothea chemsaki* Giesbert, 1979 (Colombia), and *Colobothea plebeja* Aurivillius, 1902 (Brazil). Additionally, a new state record for *Colobothea seriatomaculata* Zajciw, 1962 (Brasilia, Brazil) is provided.

Key words: Biodiversity; entomological collection; new distributional records; South America.

Resumen. A partir del examen del material de Cerambycidae depositado en la colección entomológica del Biological Museum of Lund University (Suecia), se proporcionan nuevos registros de país para *Pronuba incognita* Hovore y Giesbert, 1990 (Colombia), *Eriphus bisignatus* (Germar, 1824) (Paraguay), *Stenolis inclusa* (Bates, 1885) (Colombia), *Aegomorphus bivittus* (White, 1855) (Suriname), *Colobothea emarginata* (Olivier, 1795) (Paraguay), *Colobothea chemsaki* Giesbert, 1979 (Colombia), y *Colobothea plebeja* Aurivillius, 1902 (Brasil). Adicionalmente, se proporciona un nuevo registro de estado para *Colobothea seriatomaculata* Zajciw, 1962 (Brasilia, Brasil).

Palabras clave: Biodiversidad; colección entomológica; nuevos registros distribucionales; Sur América.

Longhorn beetles (Coleoptera: Cerambycidae) are one of the largest, most diverse, ecologically and economically important groups of beetles in the world. According to recent estimations, there are more than 35,000 species subdivided into more than 4,000 genera described globally (Rossa & Goczał 2021; Tavakilian & Chevillotte 2024).

The Biological Museum of Lund University, Sweden (MZLU) holds one of the largest insect collections in northern Europe. The main focus is on Swedish specimens, dating back to 1,735, but most of the material is from the mid-19th century onward. Currently, more than 4 million specimens have been registered. The type collection contains more than 5,600 primary types, half of which are from Sweden.

The collection of Cerambycidae holds around 1,900 species primarily from the

Palaearctic Region. Parts of the foreign material from the 19th century have been acquired by entomologists associated with the museum. An important donation of South American specimens of Cerambycidae was made by Marta Althén Dahl (1905-2004), one of a few women entomologists active in Sweden during the 20th century. Together with her husband, the ichthyologist Georg Dahl (1905-1979), she made several expeditions to South America in the 1930s-1950s, and most of her material came from Colombia. In order to update the knowledge regarding this material, we provide new records of South American Cerambycidae deposited at the MZLU.

All specimens examined belong to the South American longhorn beetle collection of the MZLU. These previously identified specimens were re-examined and determined using the available literature (Giesbert 1979; Hovore & Giesbert 1990; Monné & Monné 2010; Bezark 2024a). The specimens were examined using a Zeiss Stemi 2000, 6.5-50x stereomicroscope; the measurements were taken in millimeters (mm) using an attached micrometer ocular. Photographs were taken with a Canon EOS R + Canon MP E-65 1-5x magnification. All label data was transcribed verbatim as appearing on the respective labels. Double forward slashes (/ /) separate data on different labels, and a single one (/) separates lines within each label. The number of specimens examined for each species is given in parentheses. The species are presented in alphabetical order within their subfamily and tribe following Monné (2024a, b). When the species was represented by more than one individual, only one specimen was illustrated.

Cerambycinae Latreille, 1802

Eburiini Blanchard, 1845

Pronuba incognita Hovore & Giesbert, 1990
(Figs. 1a-b)

Material examined (1). S. Am. Colombia / 1937 / coll. G. Dahl // MZLU 00226016.

Distribution. Currently it is known from Guatemala, Honduras, Costa Rica (Guanacaste, Limón, Puntarenas, San José), and Panama (Colo) (Hovore & Giesbert 1990; Turnbow *et al.* 2003; Swift *et al.* 2010; Bezark 2024b; Monné 2024a; Tavakilian & Chevillotte 2024). **New country record:** COLOMBIA.

Trachyderini Dupont, 1836

Trachyderina Dupont, 1836

Eriphus bisignatus (Germar, 1824)
(Figs. 2a-b)

Material examined (1 male). Paraguay-San / Pedro-Cororo / XII – 1983 / M. Viana // Eriphus / bisignatus / Germ // MZLU 00226003.

Distribution. Currently it is known only from Brazil (Goiás, Bahia, Brasília, Minas Gerais, Espírito Santo, Rio de Janeiro, São Paulo) (Santos-Silva *et al.* 2023; Bezark 2024b; Monné 2024a; Tavakilian & Chevillotte 2024). **New country record:** PARAGUAY.

Lamiinae Latreille, 1825

Acanthocinini Blanchard, 1845

Stenolis inclusa (Bates, 1885)
(Figs. 3a-b)

Material examined (1 female). S. Am., Colombia / Bolivar, Batatal / 1938-1939 / coll. M. Althén-Dahl // MZLU 00226014.

Distribution. Currently it is known from Costa Rica (Limón), Panama (Chiriquí, Colón, Panama), and Ecuador (Swift *et al.* 2010; Monné 2011; Lanuza-Garay *et al.* 2020, 2021; Bezark 2024b; Monné 2024b; Roguet 2024; Tavakilian & Chevillotte 2024). **New country record:** COLOMBIA.

Acanthoderini Thomson, 1860

Aegomorphus bivittus (White, 1855)
(Figs. 4a-b)

Material examined (1 male). Surinam / Barnet / Lyon / 1919 // *Psapharochrus* / *bivittatus* / (White) // MZLU 00226012.

Distribution. Currently it is known from Guatemala, Honduras, Nicaragua (Chontales), Costa Rica (Guanacaste, Heredia, Cartago, Limón, Puntarenas), Panama (Chiriquí), Colombia, French Guiana, Brazil (Roraima, Amazonas, Pará, Mato Grosso, Maranhão, Pernambuco, Alagoas, Bahia, Minas Gerais, Espírito Santo, Rio de Janeiro, São Paulo), and Bolivia (La Paz, Santa Cruz) (Bezark 2024b; Monné 2024b; Roguet 2024, Tavakilian & Chevillotte 2024). **New country record:** SURINAME.

Colobotheini Thomson, 1861

Colobothea chemsaki Giesbert, 1979
(Figs. 5a-b)

Material examined (2). S. Am. Colombia / Bolivar, Batatal / 1938-1939 / coll. M. Althén-Dahl. // MZLU 00226010; S. Am. Colombia / San Bartolo y Volcan / 11. IV. 1936 / coll. G. Dahl. // Inne í urskog. // MZLU00226011.

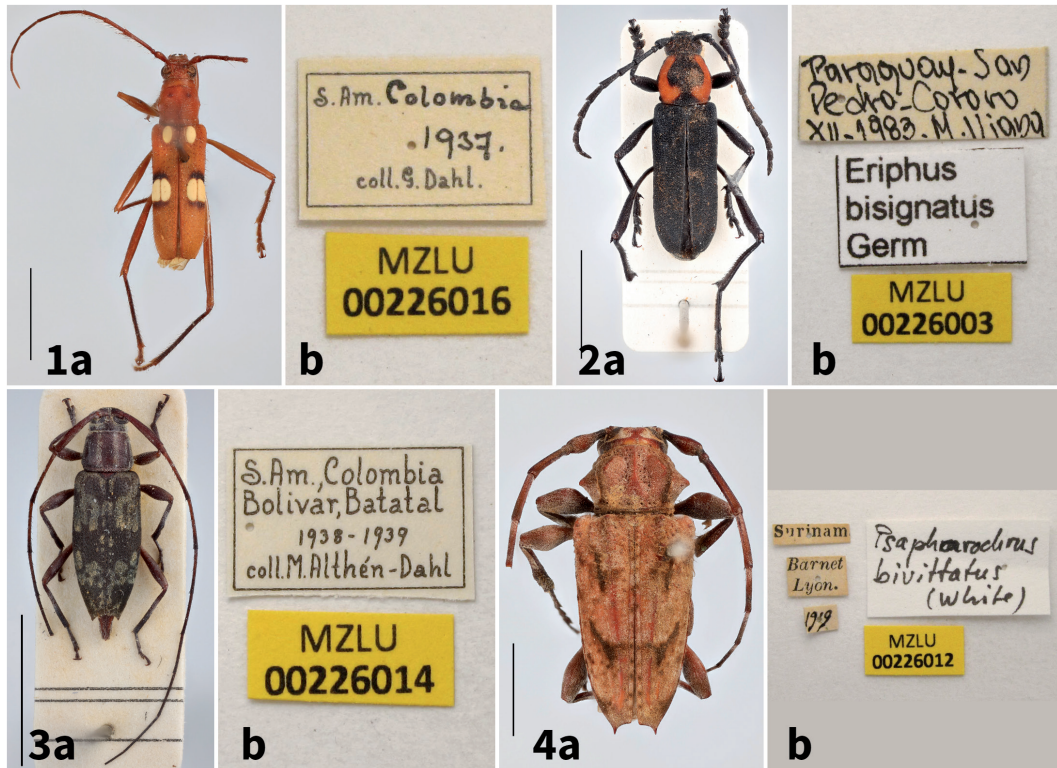
Distribution. Currently it is known from Mexico (Oaxaca), Honduras (Yoro), Costa Rica (Guanacaste, Limón), and Panama (Darién) (Giesbert 1979; Turnbow *et al.* 2003; Swift *et al.* 2010; Lanuza-Garay 2023; Bezark 2024b; Monné 2024b; Roguet 2024; Tavakilian & Chevillotte 2024). **New country record:** COLOMBIA.

Colobothea emarginata (Olivier, 1795)
(Figs. 6a-b)

Material examined (1). Para- / guay // 521. / *Colobothea* / *emarginata* // MZLU00226018.

Distribution. Currently it is known from Brazil (Bahia, Minas Gerais, Espírito Santo, Rio de Janeiro, São Paulo, Parana, Santa Catarina, Rio Grande do Sul), and Bolivia (Santa

Cruz). (Wappes *et al.* 2006; Monné & Monné 2010; Bezark 2024b; Monné 2024b; Roguet 2024; Tavakilian & Chevillotte 2024). **New country record: PARAGUAY.**



Figures 1-4. 1a-b. *Pronuba incognita* Hovore & Giesbert, 1990, dorsal habitus and labels. 2a-b. *Eriphus bisignatus* (Germar, 1824), dorsal habitus and labels. 3a-b. *Stenolis inclusa* (Bates, 1885), dorsal habitus and labels. 4a-b. *Aegomorphus bivittatus* (White, 1855), dorsal habitus and labels. Scales: 5 mm.

Colobothea plebeja Aurivillius, 1902
(Figs. 7a-b)

Material examined (2 males). Amazon // Auriv. / determ // Colobothea / hirtipes / De Geer // MZLU00226006; Amazon / MZLU00226008.

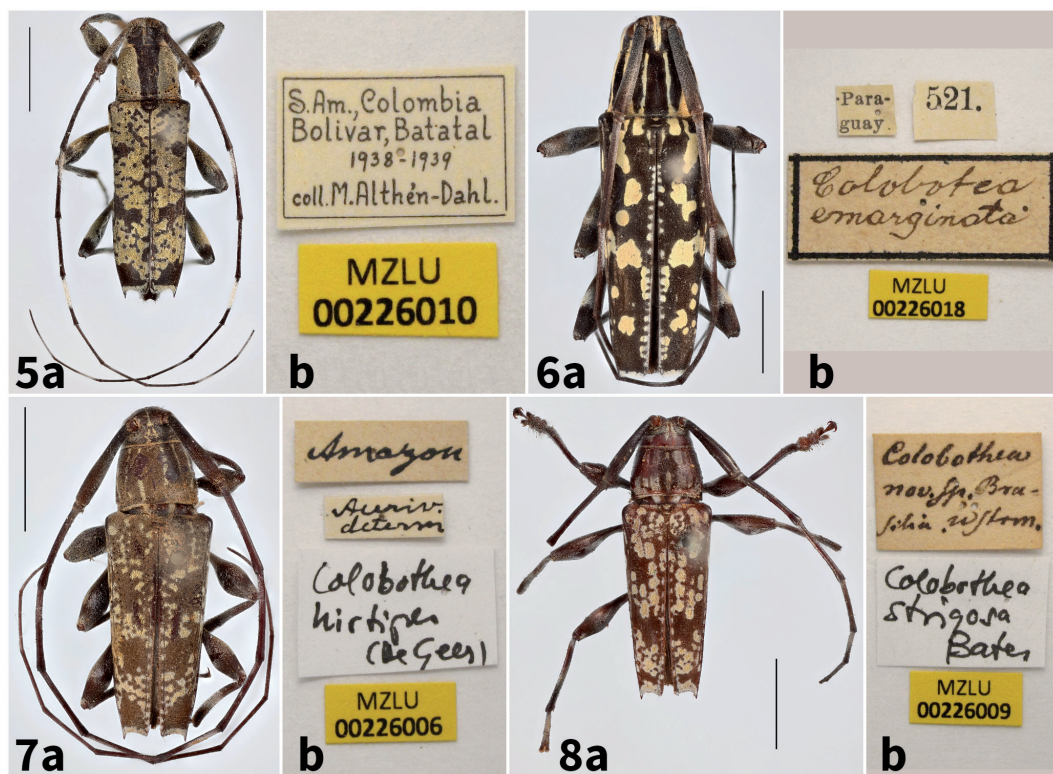
Distribution. Currently it is known from Peru (Loreto) and Bolivia (Beni, La Paz, Santa Cruz) (Wappes *et al.* 2006; Bezark 2024b; Juárez-Noé & Fägerström 2024; Monné 2024b; Roguet 2024, Tavakilian & Chevillotte 2024). **New country record: BRAZIL.**

Colobothea seriatomaculata Zajciw, 1962
(Figs. 8a-b)

Material examined (1). Colobothea / nov. sp. Bra - / silia. Wstrm // Colobothea / strigosa / Bates // MZLU00226009.

Distribution. Currently it is known from Brazil (Minas Gerais, Espírito Santo, Rio de Janeiro, São Paulo, Parana, Santa Catarina, Rio Grande do Sul), Paraguay (Boqueron),

and Argentina (Zajwic 1962; Bezark 2024a, b; Monné 2024b; Roguet 2024; Tavakilian & Chevillotte 2024). **New state record:** Brasília (Brazil).



Figures 5-8. 5a-b. *Colobothea chemsaki* Giesbert, 1979, dorsal habitus and labels. 6a-b. *Colobothea emarginata* (Olivier, 1795), dorsal habitus and labels. 7a-b. *Colobothea plebeja* Aurivillius, 1902, dorsal habitus and labels. 8a-b. *Colobothea seriatomaculata* Zajciw, 1962, dorsal habitus and labels. Scales: 5 mm.

Authors Contributions

GJN: Conceptualization, methodology, investigation, identification, writing original-draft. **CF:** Methodology, investigation, resources, data curation, photographs.

Literature Cited

- Bezark, L.G. (2024a)** A Photographic Catalog of the Cerambycidae of the World. New World Cerambycidae Catalog. Accessed 10 October 2024. Available from: <http://bezbycids.com>
- Bezark, L.G. (2024b)** Checklist of the Oxypeltidae, Vesperidae, Disteniidae and Cerambycidae, (Coleoptera) of the Western Hemisphere 2024 Edition (updated through 31 December 2023). Accessed 10 October 2024. Available from: <http://bezbycids.com/byciddb/checklists/WestHemiCerambycidae2024.pdf>
- Giesbert, E.F. (1979)** A review of the Mexican and central American species of *Colobothea* Serville (Coleoptera: Cerambycidae). *The Coleopterists' Bulletin*, 33(4): 415-438.
- Hovore, F.T. and Giesbert, E.F. (1990)** The genus *Pronuba* Thomson in Central America (Coleoptera, Cerambycidae, Cerambycinae, Heteropsini). *Revista Brasileira de Entomologia*, 34(4): 789-794.

- Juárez-Noé, G. and Fägerström, C. (2024)** An annotated and illustrated catalog of the Peruvian specimens of Cerambycidae (Coleoptera) housed in the Biological Museum at Lund University, Sweden. *Zootaxa*, 5514(4): 368-384. <https://doi.org/10.11646/zootaxa.5514.4.5>
- Lanuzza-Garay, A. (2023)** A new genus, new species and new country records of longhorned beetles (Cerambycidae, Lamiinae) from Panama. *Faunitaxys*, 11(25): 1-5. [https://doi.org/10.57800/faunitaxys-11\(25\)](https://doi.org/10.57800/faunitaxys-11(25))
- Lanuzza-Garay, A., Alpizar-Aguilar, G.M. and Medianero, E. (2021)** Longhorned beetles (Coleoptera: Cerambycidae and Disteniidae) collected in the canopy of a dry tropical lowland forest in Panama. *The Coleopterists' Bulletin*, 75(3): 651-660. <https://doi.org/10.1649/0010-065X-75.3.651>
- Lanuzza-Garay, A., Chirú, L., López-Chong, O. and Santos Murgas, A. (2020)** New country records of leaf and longhorn beetles (Coleoptera: Chrysomeloidea) collected in the Trogon Trail, Province of Colón, Panama. *Revista Nicaragüense de Entomología*, 210: 1-21.
- Monné, M.A. (2011)** Revision of the genus *Stenolis* Bates (Coleoptera, Cerambycidae, Lamiinae). *Zootaxa*, 2831(1): 39-53. <https://doi.org/10.11646/zootaxa.2831.1.3>
- Monné, M.A. (2024a)** Catalogue of the Cerambycidae (Coleoptera) of the Neotropical region. Part I. Subfamily Cerambycinae. Accessed on 10 October 2024. Available from: https://cerambycids.com/catalog/Monne_Jun2024_NeotropicalCat_part_I.pdf
- Monné, M.A. (2024b)** Catalogue of the Cerambycidae (Coleoptera) of the Neotropical region. Part II. Subfamily Lamiinae. Accessed on 10 October 2024. Available from: https://cerambycids.com/catalog/Monne_Jun2024_NeotropicalCat_part_II.pdf
- Monné, M.A. and Monné, M.L. (2010)** Synopsis of the genus *Colobothea* Lepelletier & Audiner-Serville in Bolivia, with descriptions of two new species and new country records (Coleoptera, Cerambycidae). *Zootaxa*, 2542(1): 33-47. <https://doi.org/10.11646/zootaxa.2542.1.3>
- Roguet, J.P. (2024)** Lamiinae. Accessed on 10 October 2024. Available from: <https://lamiinae.org/>
- Santos-Silva, A., Botero, J.P. and Nascimento, F.E. (2023)** On *Eryphus* Perty, 1832 (Dichophyiini), *Eriphus* Audinet-Serville, 1834 (Trachyderini, Trachyderina), and *Eryphus* Klug, 1829, with description of a new genus, and corrections on publication dates (Coleoptera, Cerambycidae). *Papéis Avulsos de Zoologia*, 63(e202363013): 1-8. <https://doi.org/10.11606/1807-0205/2023.63.013>
- Silva Ferreira, A. and Bravo, F.R. (2023)** Annotated checklist of Cerambycidae (Coleoptera: Chrysomeloidea) from the Brazilian semi-arid region, with new species and new geographic records. *Zootaxa*, 5235(1): 1-81. <https://doi.org/10.11646/zootaxa.5235.1.1>
- Swift, I.P., Bezark, L.G., Nears, E.H., Solís, Á. and Hovore, F.T. (2010)** Checklist of the Cerambycidae (Coleoptera) of Costa Rica. *Insecta Mundi*, 0131: 1-68.
- Tavakilian, G.L. and Chevillotte, H. (2024)** Titan: base de données internationales sur les Cerambycidae ou Longicornes. Accessed 10 October 2024. Available from: <http://titan.gbif.fr/>
- Turnbow, R.H. Jr., Cave, R.D. and Thomas, M.C. (2003)** A list of the Cerambycidae of Honduras, with additions of previously unrecorded species. *Ceiba*, 44(1): 1-43.
- Wappes, J.E., Morris, R.F., Nearn, E.H. and Thomas, M.C. (2006)** Preliminary checklist of Bolivian Cerambycidae (Coleoptera). *Insecta Mundi*, 20(1-2): 1-45.
- Zajciw, D. (1962)** Cinco novas espécies neotrópicas de *Colobothea* Serville, 1825 (Coleoptera, Cerambycidae, Lamiinae) com a chave para a determinação das espécies sul-brasileiras. *Anais da Academia Brasileira de Ciências*, 34(2): 281-293.