

# Public Access Submission System (PASS)

Sayed Choudhury (@eSayeed)

Johns Hopkins University

Force2018

# Public Access Submission System

- Software to support simultaneous submission of articles to funder repositories (starting with PubMedCentral) and institutional repository
- Simultaneously support both public access and institutional open access policies
- Developed in alignment with JHU Open Access Policy launch
- <http://pass.jhu.edu/>
- <https://osf.io/8qfzj/>

# US Federal Funding Agency Support 1/3

- Full integration -- programmatic submission from PASS to NIH Manuscript Submission System and submission (NIHMS) status updates from Public Access Compliance Monitor (PACM)

# US Federal Funding Agency Support 2/3

- Deposit integration -- programmatic submission from PASS to NIHMS without submission updates
  - Administration for Community Living
  - Agency for Healthcare Research and Quality
  - Office of the Assistant Secretary for Preparedness and Response
  - Centers for Disease Control
  - Department of Veteran Affairs
  - Food and Drug Administration
  - Howard Hughes Medical Institute
  - National Aeronautics and Space Administration

# US Federal Funding Agency Support 3/3

- Linked web portal
  - Department of Education
  - US Agency for International Development



## Public Access Submission System

Use PASS to submit your manuscripts to funder and institutional publication repositories (e.g. PubMed Central, JScholarship) and comply with access policies.

Using the web-based PASS system, you can: avoid paying article processing charges to make your publication open to the public, simultaneously send your manuscript to multiple repositories seamlessly, and populate forms automatically with publication and author information by providing DOIs and ORCID IDs. [Learn more about PASS?](#)

[Get started!](#)

PASS supports existing submission workflows for the following agencies and institutions

CONTACT US

### Manage Publication Submissions

The submissions view allows you to:

- create submissions to one or more repository in order to comply with the access policies of your funders and institutions
- review the statuses of previous submissions

[Start new submission](#)

[View submissions](#)

### Manage Grants Compliance

The grants view allows you to:

- see an overview of submission statuses at the grant level
- create a submission for a specific grant

[Manage grants' submissions](#)

## Submissions

Create new submission

This list contains all Submissions that you have initiated through PASS. If you have an NIH grant, it may also contain pre-loaded information about incomplete, in-progress, or completed Submissions to PubMed Central that cite a grant for which you are the PI. Find out more about these pre-loaded NIH submissions on the [FAQ page](#)

Search:

Article	Award Number (Funder)	Repositories	Submitted Date	Status	Manuscript IDs	Actions
<a href="#">Correction to "Structure Based Design of Non-Natural Peptidic Macrocyclic Mcl-1 Inhibitors"</a>	<a href="#">P200A 120036</a> (US DEPT OF EDUCATION)	JScholarship	08/09/2018	<span>1</span> Complete	<a href="#">123456789/6</a>	No actions available.
<a href="#">Correction to "Structure Based Design of Non-Natural Peptidic Macrocyclic Mcl-1 Inhibitors"</a>	<a href="#">300191</a> (DEPARTMENT FOR INTERNATIONAL DEVELOPMENT)	JScholarship	08/09/2018	<span>1</span> Complete	<a href="#">123456789/5</a>	No actions available.
<a href="#">Electrogenerated chemiluminescence of Ru(bpy)<sub>3</sub><sup>2+</sup> at a black phosphorus quantum dot modified electrode and its sensing application</a>	Not Available	JScholarship	06/29/2018	<span>1</span> Complete	<a href="#">123456789/5</a>	No actions available.
<a href="#">My Brilliant Article</a>	Not Available	JScholarship	06/29/2018	<span>1</span> Complete	<a href="#">123456789/4</a>	No actions available.
<a href="#">Correction to "Structure Based Design of Non-Natural Peptidic Macrocyclic Mcl-1 Inhibitors"</a>	Not Available	JScholarship	06/29/2018	<span>1</span> Complete	<a href="#">123456789/10</a>	No actions available.
<a href="#">Specific protein supplementation using soya, casein or whey differentially affects regional gut growth and luminal growth factor bioactivity in rats; implications for the treatment of gut injury and stimulating repair</a>	Not Available	JScholarship	06/29/2018	<span>1</span> Complete	<a href="#">123456789/9</a>	No actions available.
<a href="#">Retinal damage and vision loss in African American multiple sclerosis patients.</a>	<a href="#">T32NS069351</a> (NATIONAL INSTITUTE OF HEALTH)	PubMed Central	11/10/2014	<span>1</span> Complete	<a href="#">PMC4315746</a> <a href="#">NIHMS6415...</a>	No actions available.



Dashboard **Grants** Submissions About Contact FAQ Sayeed Choudhury

## Your Grants

Grants with end dates after January 1, 2011 have been loaded into PASS from the Johns Hopkins grant management system, COEUS. You are listed as a PI, Co-PI, or Co-I for these grants within the COEUS system. If you find any issue with these grant records, please [contact us](#).

Search: 

Project Name	Funder	Award #	End Date	# of Submissions	Status	Policy Compliance	Actions
<a href="#">A Framework for Annotation Interoperability</a>	ANDREW W MELLON FOUNDATION	<a href="#">90079215</a>	09/29/2020	0	active	no issues detected	<a href="#">New submission</a>
<a href="#">Mini Sabbatical</a>	ALFRED P SLOAN RESEARCH FOUNDATION	<a href="#">G-2018-11214</a>	08/30/2019	0	active	no issues detected	<a href="#">New submission</a>
<a href="#">Graduate Assistantships in Applied Mathematics and Statistics</a>	US DEPT OF EDUCATION	<a href="#">P200A 120036</a>	08/14/2017	1	terminated	no issues detected	<a href="#">New submission</a>
<a href="#">Fedora 4 API Extension (API-X) Architecture</a>	INSTITUTE FOR MUSEUM AND LIBRARY SERVICE	<a href="#">LG-70-16-0076-16</a>	04/29/2017	0	terminated	no issues detected	<a href="#">New submission</a>
<a href="#">Alfred Sloan Foundation Data Curation Infrastructure</a>	ALFRED P SLOAN RESEARCH FOUNDATION	<a href="#">2014-3-24</a>	03/31/2017	0	terminated	no issues detected	<a href="#">New submission</a>
<a href="#">CLIR Data Curation Fellow</a>	COUNCIL ON LIBRARY AND INFORMATION RES	<a href="#">CON-453</a>	09/29/2015	0	terminated	no issues detected	<a href="#">New submission</a>
<a href="#">Training Clinician Scientists in Neuroinfectious Disease</a>	NATIONAL INSTITUTE OF HEALTH	<a href="#">T32NS069351</a>	06/29/2015	4	terminated	no issues detected	<a href="#">New submission</a>

## New Submission

*Specific protein supplementation using soya, casein or whey differentially affects regional gut growth and luminal growth factor bioactivity in rats; implications for the treatment of gut injury and stimulating repair*

1. Basics	2. Grants	3. Policies	4. Repositories	5. Details	6. Files	7. Review
-----------	-----------	-------------	-----------------	------------	----------	-----------

If the manuscript/article you are submitting has been assigned a Digital Object Identifier (DOI), please provide it now to pre-populate submission forms.

DOI

Manuscript/Article Title (required)

Journal (required)

[Can't find your journal? Contact us to add it.](#)

## New Submission

*Specific protein supplementation using soya, casein or whey differentially affects regional gut growth and luminal growth factor bioactivity in rats; implications for the treatment of gut injury and stimulating repair*

1. Basics	<b>2. Grants</b>	3. Policies	4. Repositories	5. Details	6. Files	7. Review
-----------	------------------	-------------	-----------------	------------	----------	-----------

PASS receives information about grants from the University grant management system, COEUS. If you could not find your grant in the below dropdown list, [please contact us](#).

Review/provide information about the grant(s)/award(s) that funded this work. This information will help determine which public access policies are applicable to your work. If the work you're about to submit was not supported by a grant, leave this page blank and go to the next step.

Award Number	Description	
T32NS069351	Training Clinician Scientists in Neuroinfectious Disease	<a href="#">Remove</a>

Add Grants:

[Back](#)

[Next](#)

1. Basics

2. Grants

3. Policies

4. Repositories

5. Details

6. Files

7. Review

Based on the information you provided so far, these are the public access policies that are applicable to your work:

### National Institutes of Health Public Access Policy

Requires deposit into PubMed Central

The Director of the National Institutes of Health requires that all investigators funded by the NIH submit or have submitted for them to the National Library of Medicine's PubMed Central an electronic version of their final, peer-reviewed manuscripts upon acceptance for publication, to be made publicly available no later than 12 months after the official date of publication. In lieu of the final peer-reviewed manuscript, NIH will accept the final published article, provided that the author has the right to submit this version.

For more information, see their official policy below.

<https://publicaccess.nih.gov/policy.htm>

Some journals would submit your article to PMC on your behalf, for a fee. Specific arrangements would be required. Please indicate below whether or not you have made an arrangement with the publisher to have your article deposited by your journal/publisher.

- I have made (or intend to make) an arrangement with the publisher to deposit my article directly to PMC. (You will not need to submit your manuscript to NIH Manuscript Submission System (NIHMS) as part of this process.)
- I will not make an arrangement with the publisher to deposit my article directly to PMC. (You will need to submit your manuscript to NIHMS as part of this process.)

### Johns Hopkins University (JHU) Open Access Policy

Expects deposit into an open access repository

The university expects that every scholarly article produced by full-time faculty members be accessible in an open access repository. This can be achieved through deposits into existing public access repositories (such as PubMed Central, arXiv, etc.) and/or into Johns Hopkins institutional repository, JScholarship.

For more information, see their official policy below.

<https://provost.jhu.edu/about/open-access/>

## New Submission

*Specific protein supplementation using soya, casein or whey differentially affects regional gut growth and luminal growth factor bioactivity in rats; implications for the treatment of gut injury and stimulating repair*

1. Basics	2. Grants	3. Policies	4. Repositories	5. Details	6. Files	7. Review
-----------	-----------	-------------	-----------------	------------	----------	-----------

### Funders' repositories

Based on the grant and journal information provided, you are required to submit your manuscript to the repositories below. PASS will help you to create submissions for these in the following steps:

PubMed Central - required by NATIONAL INSTITUTE OF HEALTH

### Institutional repositories

A Submission to the following will put you in compliance with your [institution's open access policy](#). If you are already making your publication openly available elsewhere (e.g. PubMed Central), this may be optional.

JScholarship - required by Johns Hopkins University

Back

Next

ISSN

2042-6496,2042-650X

Abstract

Differential enhancement of luminal growth factor bioactivity and targeted regional gut growth occurs dependent on dietary protein supplement.

Author(s)

ORCID(s)

Tania Marchbank

<http://orcid.org/0000-0003-2076-9098>

Nikki Mandir

Denis Calnan

Robert A. Goodlad

Theo Podas

Raymond J. Playford

<http://orcid.org/0000-0003-1235-8504>

Embargo End Date

mm/dd/yyyy

[Back](#)

[Next](#)

[Dashboard](#) [Grants](#) [Submissions](#) [About](#) [Contact](#) [FAQ](#) Sayeed Choudhury

## New Submission

*Specific protein supplementation using soya, casein or whey differentially affects regional gut growth and luminal growth factor bioactivity in rats; implications for the treatment of gut injury and stimulating repair*

[1. Basics](#)[2. Grants](#)[3. Policies](#)[4. Repositories](#)[5. Details](#)[6. Files](#)[7. Review](#)

## Johns Hopkins - JScholarship

Form 2 of 2

Deposit requirements for JH's institutional repository JScholarship.

### Deposit Agreement

**NON-EXCLUSIVE LICENSE FOR USE OF MATERIALS** This non-exclusive license defines the terms for the deposit of Materials in all formats into the digital repository of materials collected, preserved and made available through the Johns Hopkins Digital Repository, JScholarship. The Contributor hereby grants to Johns Hopkins a royalty free, non-exclusive worldwide license to use, re-use, display, distribute, transmit, publish, re-publish or copy the Materials, either digitally or in print, or in any other medium, now or hereafter known, for the purpose of including the Materials hereby licensed in the collection of materials in the Johns Hopkins Digital Repository for educational use worldwide. In some cases, access to content may be restricted according to provisions established in negotiation with the copyright holder. This license shall not authorize the commercial use of the Materials by Johns Hopkins or any other person or organization, but such Materials shall be restricted to non-profit educational use. Persons may apply for commercial use by contacting the copyright holder. Copyright and any other intellectual property right in or to the Materials shall not be transferred by this agreement and shall remain with the Contributor, or the Copyright holder if different from the Contributor. Other than this limited license, the Contributor or Copyright holder retains all rights, title, copyright and other interest in the images licensed. If the submission contains material for which the Contributor does not hold copyright, the Contributor represents that s/he has obtained the permission of the Copyright owner to grant Johns Hopkins the rights required by this license, and that such third-party owned material is clearly identified and acknowledged within the text or content of the submission. If the submission is based upon work that has been sponsored or supported by an agency or organization other than Johns Hopkins, the Contributor represents that s/he has fulfilled any right of review or other obligations required by such contract or agreement. Johns Hopkins will not make any alteration, other than as allowed by this license, to your submission. This agreement embodies the entire agreement of the parties. No modification of this agreement shall be of any effect unless it is made in writing and signed by all of the parties to the agreement.

 I agree to the above statement on today's date[Back](#)[Next](#)

## New Submission

*Specific protein supplementation using soya, casein or whey differentially affects regional gut growth and luminal growth factor bioactivity in rats; implications for the treatment of gut injury and stimulating repair*

1. Basics

2. Grants

3. Policies

4. Repositories

5. Details

6. Files

7. Review

National Institutes of Health (NIH) and other PubMed Central-supported funding agencies require funded authors to submit the Author's Accepted Manuscripts. For clarification on the difference between Author's Accepted Manuscript and Final Published Article, [please see here](#).

To ensure successful processing of your submission in NIH Manuscript Submission System, be sure to include all referenced tables, figures and supplemental files in your submission, in addition to the Author's Accepted Manuscript.

Attach manuscript/article files to this submission.

Each individual file must be smaller than 100MB.

Choose Files Vote\_November\_6.pdf

File Name	File Role	Description	Action
Vote_November_6.pdf	Manuscript	Research that combines methods from sociology and psychology	Remove

**Tip:** Use the Control or the Shift key to select multiple files.

[Back](#)[Next](#)



10.1039/c7fo01251a

Please review the information below


- Repositories 
- JScholarship
  - PubMed Central

Grants **T32NS069351** : Training Clinician Scientists in Neuroinfectious Disease  
**Funder** : NATIONAL INSTITUTE OF HEALTH

Details **ISSN**: 2042-6496,2042-650X  
**Agreement-to-deposit**: true  
**Title**: Specific protein supplementation using soya, casein or whey differentially affects regional gut growth and luminal growth factor bioactivity in rats; implications for the treatment of gut injury and stimulating repair  
**Journal-title**: Food & Function  
**Volume**: 9  
**Issue**: 1  
**Abstract**: Differential enhancement of luminal growth factor bioactivity and targeted regional gut growth occurs dependent on dietary protein supplement.  
**Author(s)**:

- Tania Marchbank (<http://orcid.org/0000-0003-2076-9098>)
- Nikki Mandir
- Denis Calnan
- Robert A. Goodlad
- Theo Podas
- Raymond J. Playford (<http://orcid.org/0000-0003-1235-8504>)

**DOI**: 10.1039/c7fo01251a  
**Publisher**: Royal Society of Chemistry (RSC)  
**Journal-title-short**: Food Funct.  
**NLMTA**: Food Funct

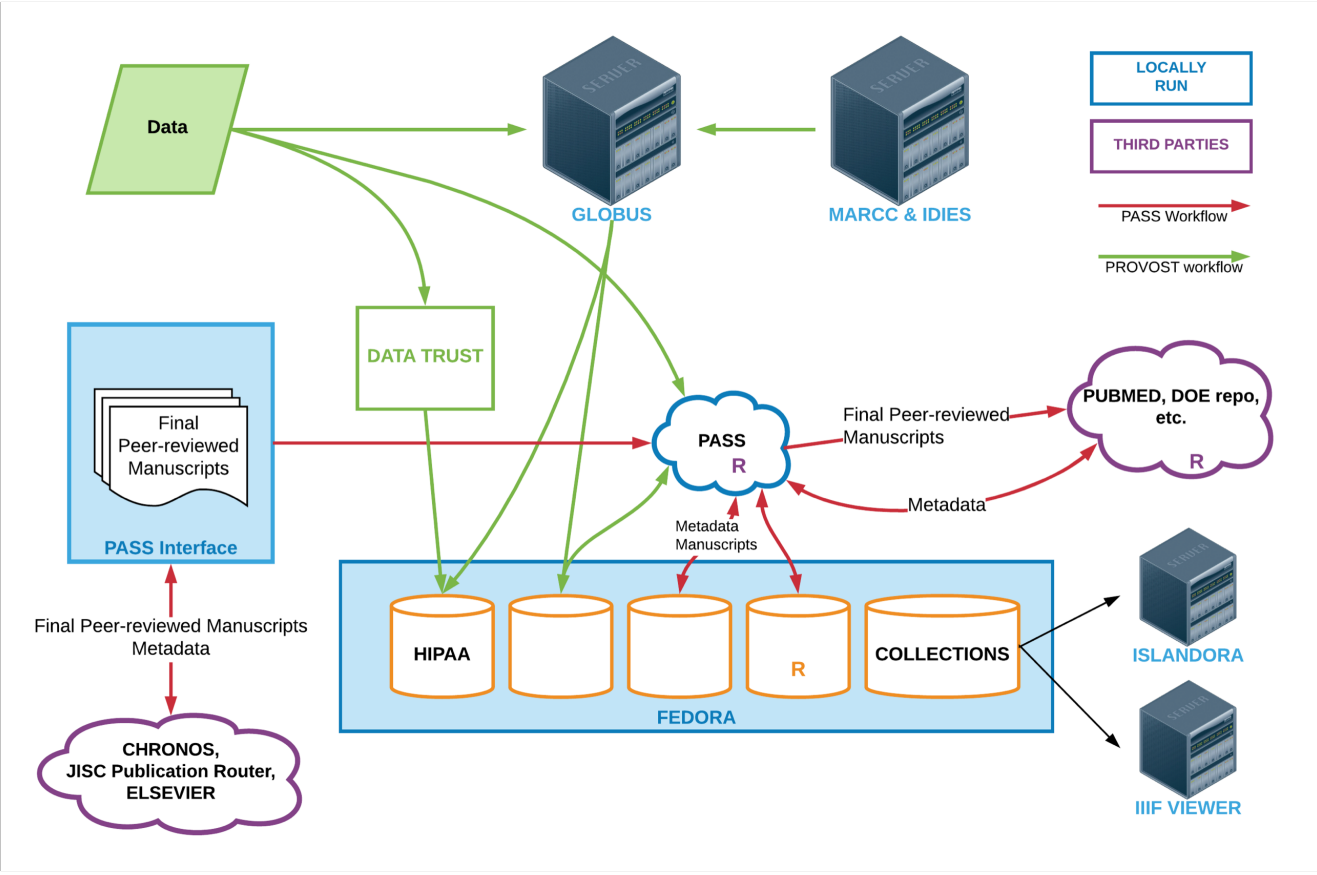
	Name	Type	Description
Files	 Vote_November_6.pdf	manuscript	Research that combines methods from sociology and psychology

# PASS Technology

- UI created with Ember
- Data stored for PASS and any uploaded files are part of a submission package in Fedora 4 and are accessible as JSON using a JSON-LD context
- Elasticsearch used to index the data
- ActiveMQ used as messaging queue (accessed by both Elasticsearch and Deposit Services)
- Shibboleth used for single sign-on service and authorization
- Deposit Services, Grant Data Loader, and NIHMS Submission Loader are Java applications

# PASS Road Map

- Adoption at other institutions (currently working on pilot with Harvard and testing at MIT)
- Automate submissions to other funder repositories (e.g., NSF, DOE)
- Improve status update information
- Integrate with:
  - Data archive
  - Open Access Button
  - Publishing systems like Open Journal Systems
  - Faculty profile systems



# Acknowledgements

- Amazing software development team of the Sheridan Libraries at Johns Hopkins University (JHU)
- Peter Suber (Harvard), Ellen Finne & Heather Yager (MIT), Jeff Spies (formerly Center for Open Science and now 221B)
- Katie Funk & Pierce Smith from National Library of Medicine
- Funding from JHU President's Office and Sheridan Libraries
- Funding from MIT Libraries