



FUNCTIONAL USE CASES

Characteristic Scenarios for the Evaluation of Urban Driving Automation

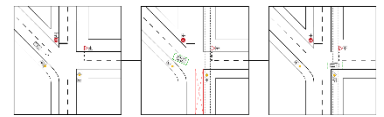
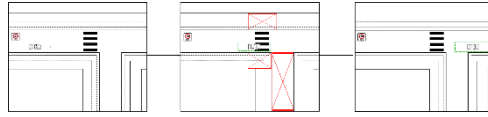
Lukas Westhofen, Christian Neurohr, DLR

Challenge: An urban operational domain contains arbitrarily many complex traffic scenarios. How to create a common understanding of the severe demands imposed by reality?



Concept: Use examples of performing the dynamic driving task across three representative urban intersections with increasing complexity of actor-interaction.

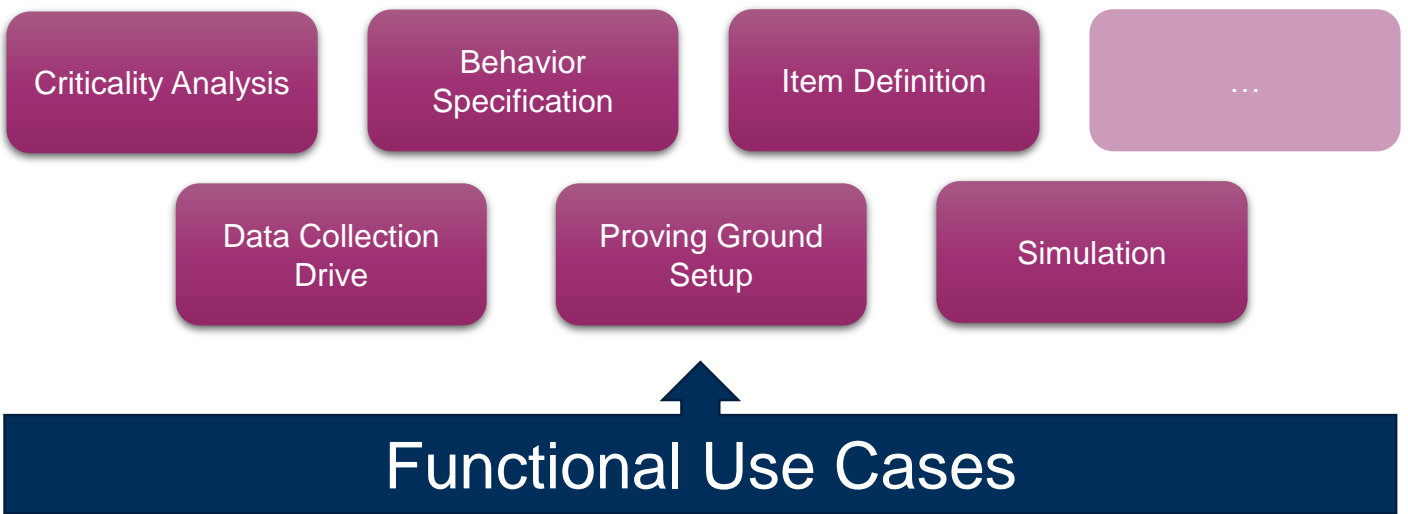
Functional Use Case 1	Functional Use Case 2	Functional Use Case 3
Left turn on an X-crossing with traffic lights	Straight passing of a T-crossing with pedestrian crossing	Left turn on a bending right of way X-crossing with an angled arm



Variations of the Base Concepts:

	Functional Use Case 1	Functional Use Case 2	Functional Use Case 3	
#1	+ oncoming traffic with right of way	+ traffic from the right with right of way	+ traffic from the right with right of way	#1
#2	+ oncoming traffic + occlusion through oncoming crossing traffic	+ pedestrian using crosswalk + bicyclist crossing in same direction + oncoming traffic wants to cross left	+ traffic, needs to give right of way + pedestrian with right of way	#2
#3	+ non-functional traffic lights + rush hour traffic	+ parking cars + bicyclist using crosswalk + occlusion of bicyclist through parking cars	+ ambulance with right of way + following car, needs to give right of way	#3
#4		+ pedestrian using crosswalk + sensor blockage (dirt, etc.)		#4

Result: Alignment of all developed methods & tools regarding these functional use cases. This leads to a common understanding of the challenges within the operational domain.



Stream presentations and posters refer to the Functional Use Cases (FUCs). Feel free to have a look at this poster for details.

www.vvm-projekt.de Twitter @vvm-project LinkedIn VVM Project

Projektpartner



A project developed by the
VDA Leitinitiative
autonomous and connected driving

Supported by:
Federal Ministry for Economic Affairs and Climate Action
on the basis of a decision by the German Bundestag

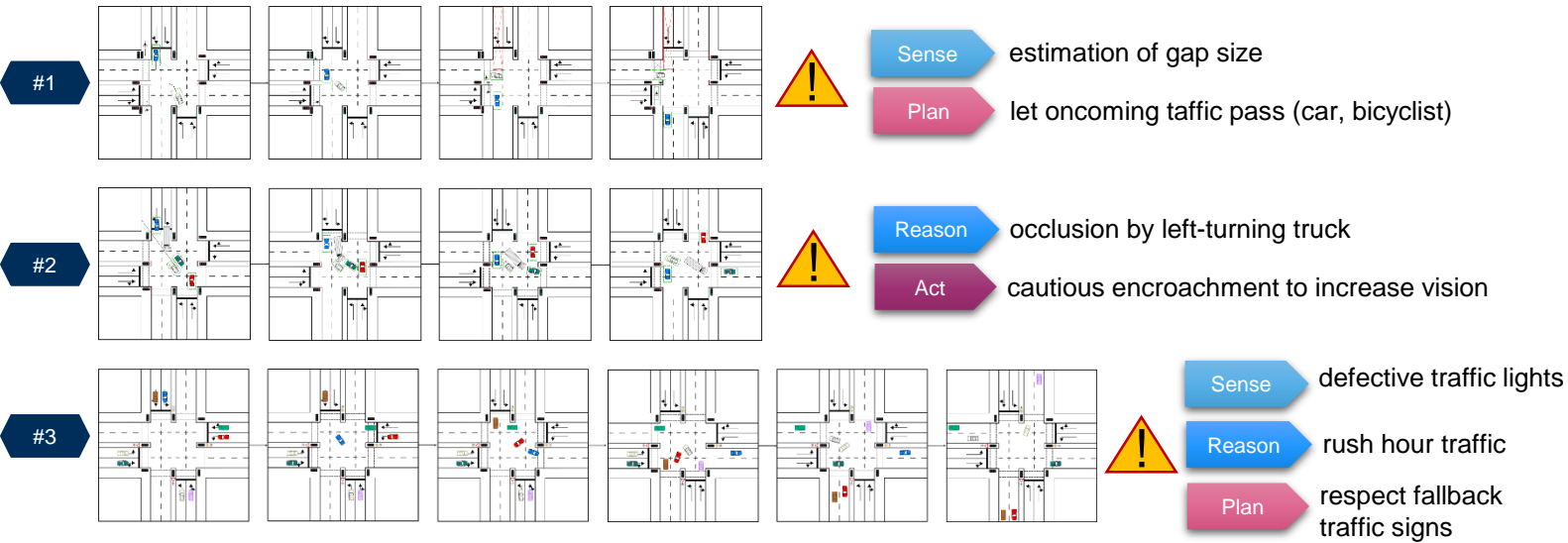
FUNCTIONAL USE CASES – DETAILS & CHALLENGES



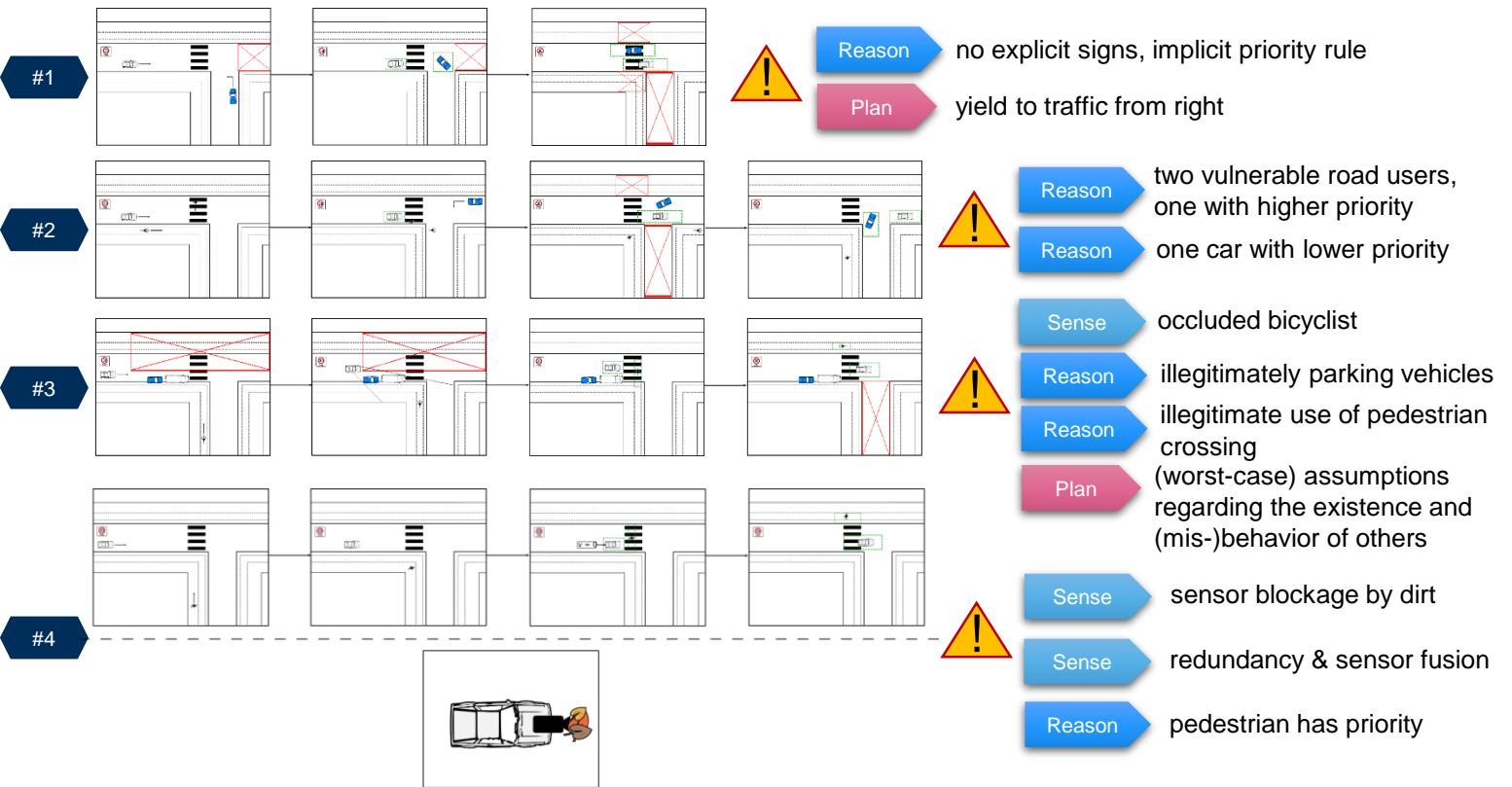
Challenges within the FUCs are structured along abstract functionality:



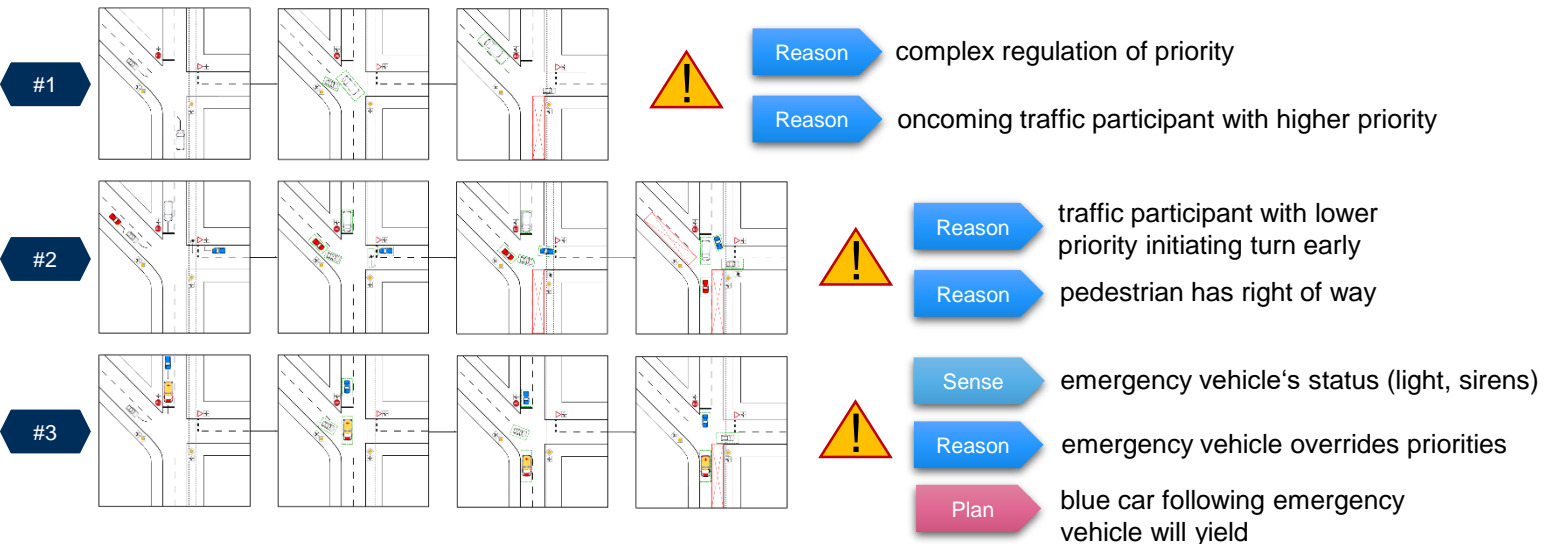
Functional Use Case 1 – Unprotected Left Turn on X-Crossing



Functional Use Case 2 – Passing of T-Crossing with Pedestrian Crossing



Functional Use Case 3 – Left Turn with a Bending Right of Way



www.vvm-projekt.de

Twitter @vvm-project

LinkedIn VVM Project

Projektpartner



Supported by:

**A project developed by the
VDA Leitinitiative
autonomous and connected driving**



on the basis of a decision by the German Bundestag