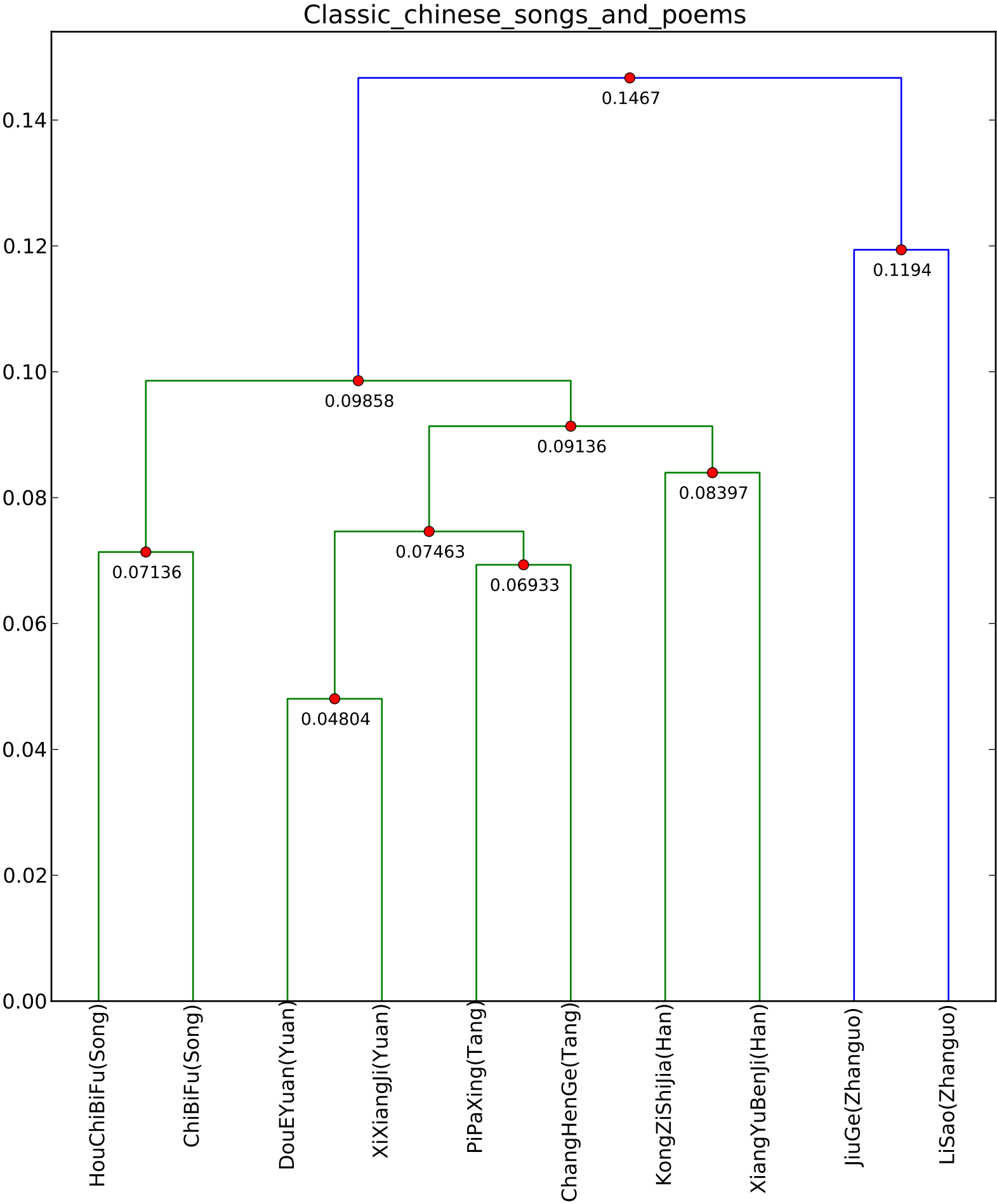


● the branch height legend



Silhouette Score: 0.0633 ( $-1 \leq \text{Silhouette Score} \leq 1$ )  
The best value is 1 and the worst value is -1. Values near 0 indicate overlapping clusters. Negative values generally indicate that a sample has been assigned to the wrong cluster, as a different cluster is more similar.

Dendrogram Options - Distance Metric: euclidean, Linkage Method: average, Data Values Format: Frequency Proportion

Dendrogram Distances - 0.04804, 0.06933, 0.07136, 0.07463, 0.08397, 0.09136, 0.09858, 0.11939, 0.1467

JiuGe(Zhanguo): Scrubbing Options - Punctuation: removed, Apostrophes: removed, Hypens: removed,

Lowercase: off, Digits: removed, Tags: kept, Lemmas: [                    ],  
Cutting Options - Not cut.

HouChiBiFu(Song):    Scrubbing Options - Punctuation: removed, Apostrophes: removed, Hypens: removed,  
Lowercase: off, Digits: removed, Tags: kept, Lemmas: [                    ],  
Cutting Options - Not cut.

KongZiShijia(Han):    Scrubbing Options - Punctuation: removed, Apostrophes: removed, Hypens:  
removed, Lowercase: off, Digits: removed, Tags: kept, Lemmas: [                    ],  
Cutting Options - Not cut.

PiPaXing(Tang):    Scrubbing Options - Punctuation: removed, Apostrophes: removed, Hypens: removed,  
Lowercase: off, Digits: removed, Tags: kept, Lemmas: [                    ],  
Cutting Options - Not cut.

LiSao(Zhanguo):    Scrubbing Options - Punctuation: removed, Apostrophes: removed, Hypens: removed,  
Lowercase: off, Digits: removed, Tags: kept, Lemmas: [                    ],  
Cutting Options - Not cut.

DouEYuan(Yuan):    Scrubbing Options - Punctuation: removed, Apostrophes: removed, Hypens: removed,  
Lowercase: off, Digits: removed, Tags: kept, Lemmas: [                    ],  
Cutting Options - Not cut.

XiXiangJi(Yuan):    Scrubbing Options - Punctuation: removed, Apostrophes: removed, Hypens: removed,  
Lowercase: off, Digits: removed, Tags: kept, Lemmas: [                    ],  
Cutting Options - Not cut.

ChiBiFu(Song):    Scrubbing Options - Punctuation: removed, Apostrophes: removed, Hypens: removed,  
Lowercase: off, Digits: removed, Tags: kept, Lemmas: [                    ],  
Cutting Options - Not cut.

ChangHenGe(Tang):    Scrubbing Options - Punctuation: removed, Apostrophes: removed, Hypens: removed,  
Lowercase: off, Digits: removed, Tags: kept, Lemmas: [                    ],  
Cutting Options - Not cut.

XiangYuBenJi(Han):    Scrubbing Options - Punctuation: removed, Apostrophes: removed, Hypens:  
removed, Lowercase: off, Digits: removed, Tags: kept, Lemmas: [                    ],  
Cutting Options - Not cut.