



Aproximar a ciência, a tecnologia e a inovação do quotidiano das comunidades locais, como ferramentas para o desenvolvimento sustentável



**CIÊNCIA
TECNOLOGIA
INVESTIGAÇÃO**



PLATAFORMA
DE CIÊNCIA
ABERTA



**CIDADÃOS
ESCOLA**



TERRITÓRIO

EDUCAÇÃO

INVESTIGAÇÃO E DESENVOLVIMENTO

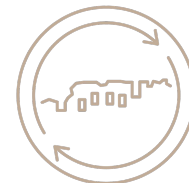
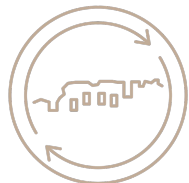
DESENVOLVIMENTO / COESÃO TERRITORIAIS



CIÊNCIA VIVA



**OPEN
SCIENCE
HUB**



aBEiRar
15 CONCELHOS, 1 MESMO TERRITÓRIO



ASTC's Community Science Framework

Our world faces challenges and opportunities when it comes to issues at the intersection of science and society, such as climate change, public health, and rapidly developing technologies. Community science encompasses a wide array of approaches that groups of people who share a common geography, set of characteristics, interests, and goals use to answer science- and technology-related questions and construct solutions relevant for their communities.

Conducting community science can include:

- designing a research agenda
- determining best methods and practices
- collecting actionable data and observations
- conducting rigorous analysis

Community priorities may include:

- improving air and water quality
- planning for climate resiliency
- improving health outcomes
- ensuring that scientific data is widely accessible
- influencing policy to align with community values



APPROACHES

Community science encompasses a diverse set of approaches to help communities cultivate deeper connections with science. The methods and goals of these approaches often overlap, and here approaches are categorized here by their primary "purpose" or focus.

Read more about these approaches on the following page.

ATTRIBUTES

Attributes are centered around doing respectful work with communities and pursuing authentic, equitable partnerships. Each attribute requires ongoing evaluation and reflection to ensure growth over time.

- Centers Community Priorities
- Equity-Focused
- Respects Community Strengths
- Aims for Action
- Shares Leadership

OUTCOMES

Outcomes of community science will differ based on how a program is designed. This framework can be used to push our commitment towards deeper, mutually beneficial, and sustainable partnerships with communities.

- Strong Community Partnerships
- Ethical Decision-Making
- Capacity for Civic Engagement
- Increased Science Agency
- Inspiration for New Science
- Sustainable Solutions for Society
- Impactful Scientific Research

COMMUNITY-DRIVEN CITIZEN SCIENCE

Projects that address community interests and questions using research approaches co-developed by non-professional scientists. Includes: *crowdsourcing data, open access technologies*

PARTICIPATORY RESEARCH

Community participation in the design and implementation of research initiatives. Includes: *community-based participatory research, co-creation labs, focus groups*

DIALOGUE & DELIBERATION

Public dialogue and deliberation programs on how science, technology, and innovation intersect with societal issues. Includes: *public forums, conversation cafes, town halls, intergroup dialogues*



CIVIC ENGAGEMENT & POLICY MAKING

Using research as an input for collective action and making policy and governance decisions to advance communities' goals. Includes: *guided community tours, community organizing, action research*

OPEN INNOVATION

Open challenges, competitions, and calls to action that use science and technology to solve difficult problems. Includes: *hack-a-thons, open-source information*

RESOURCES

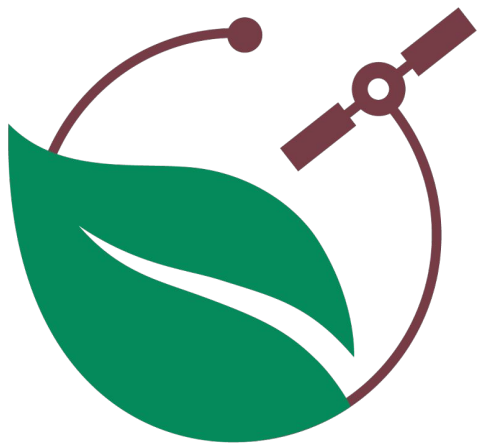
for Science Engagement Professionals

ASTC's Community Science Initiative supports our members in leveraging community science approaches so they can join their communities in co-constructing solutions.

VISIT OUR WEBSITE
communityscience.astc.org

TO FIND OUR

- Resource hub
- Community of practice
- Capacity-building activities



BioD'Agro

LEAF
LINKING LANDSCAPE, ENVIRONMENT,
AGRICULTURE AND FOOD



INSTITUTO
SUPERIOR DE
AGRONOMIA
Universidade de Lisboa



UNIVERSIDADE
BEIRA INTERIOR



SINERGIAE
AMBIENTE



COLINAS DO DOURO



PLATAFORMA
DE CIÊNCIA
ABERTA



FIGUEIRA DE
CASTELORODRIGO
MUNICÍPIO

biodagro.com



BPI



Fundação "la Caixa"

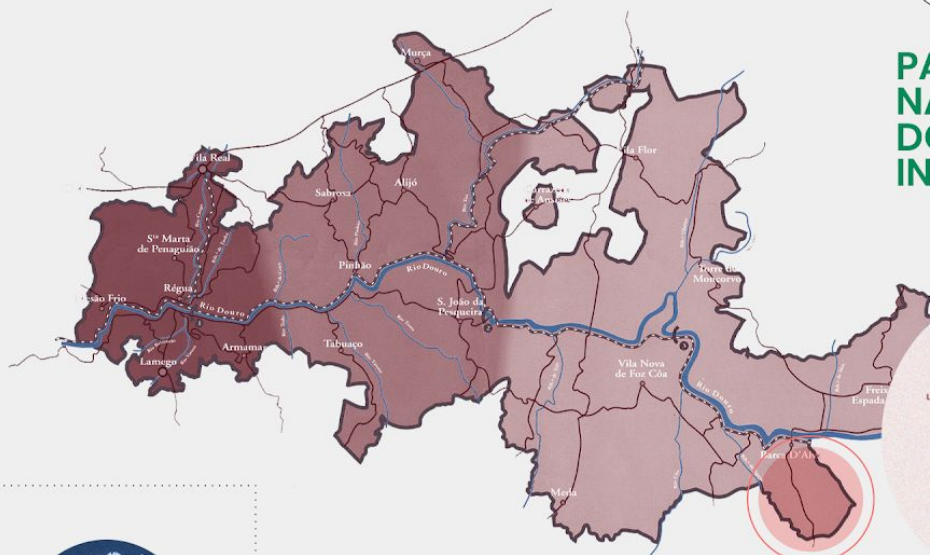
FCT

Fundação
para a Ciência
e a Tecnologia

REGIÃO DEMARCADA DO DOURO



PARQUE NATURAL DO DOURO INTERNACIONAL

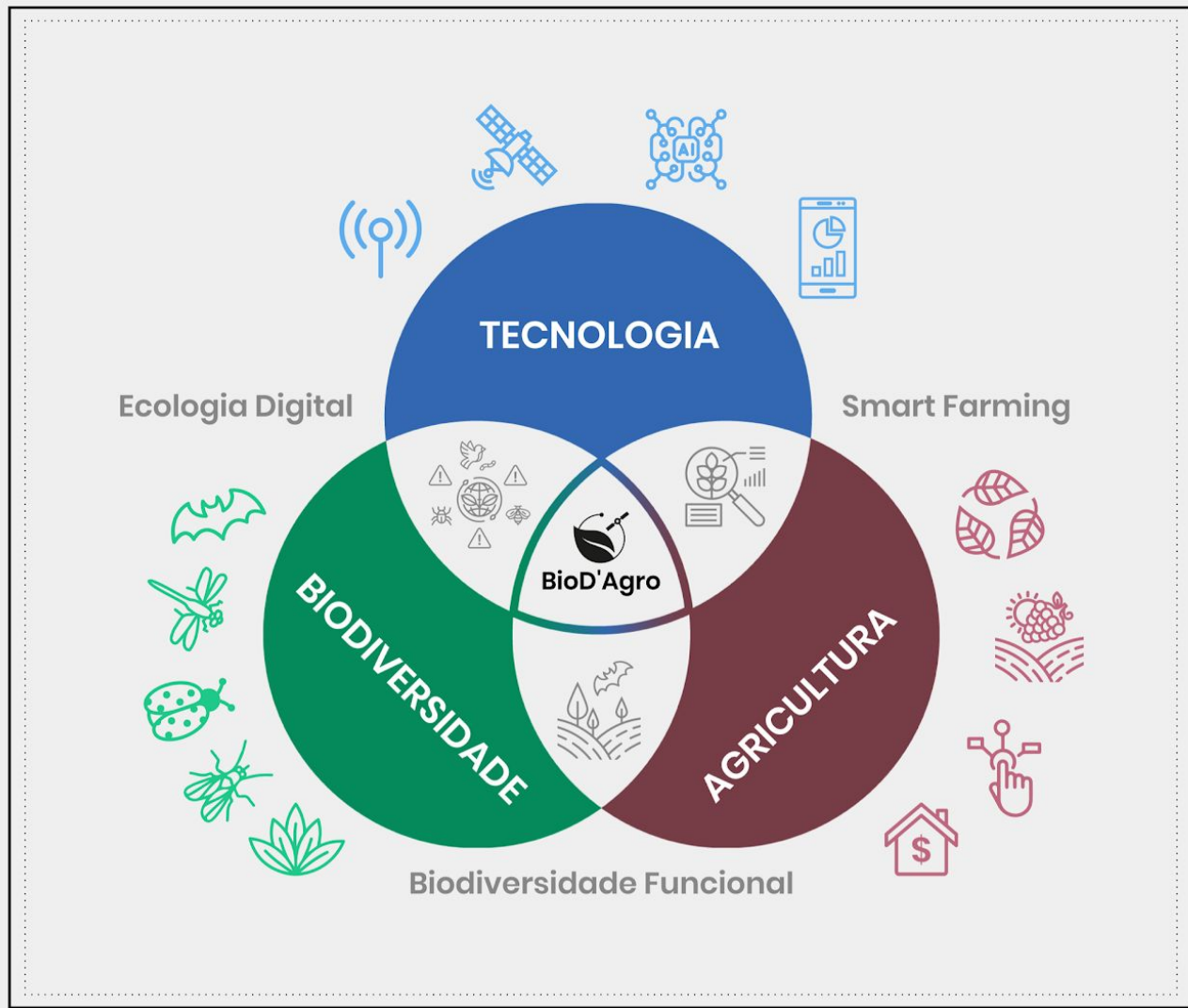


COLINAS DO DOURO

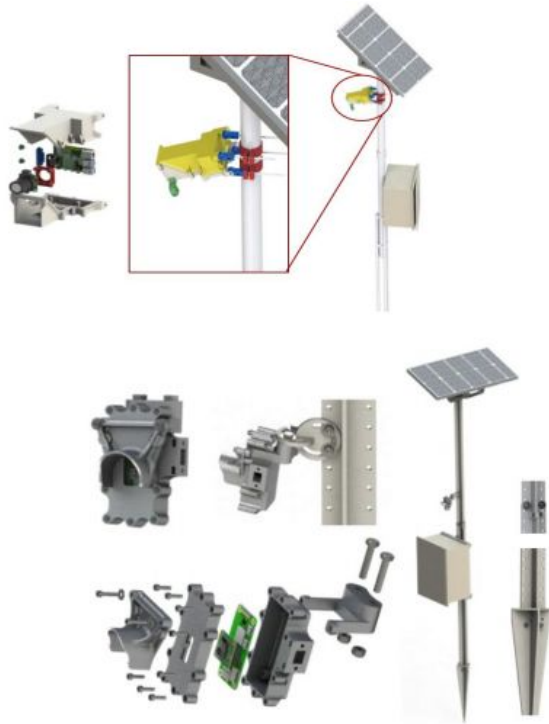
FIGUEIRA DE
CASTELORODRIGO
MUNICÍPIO



BioD'Agro



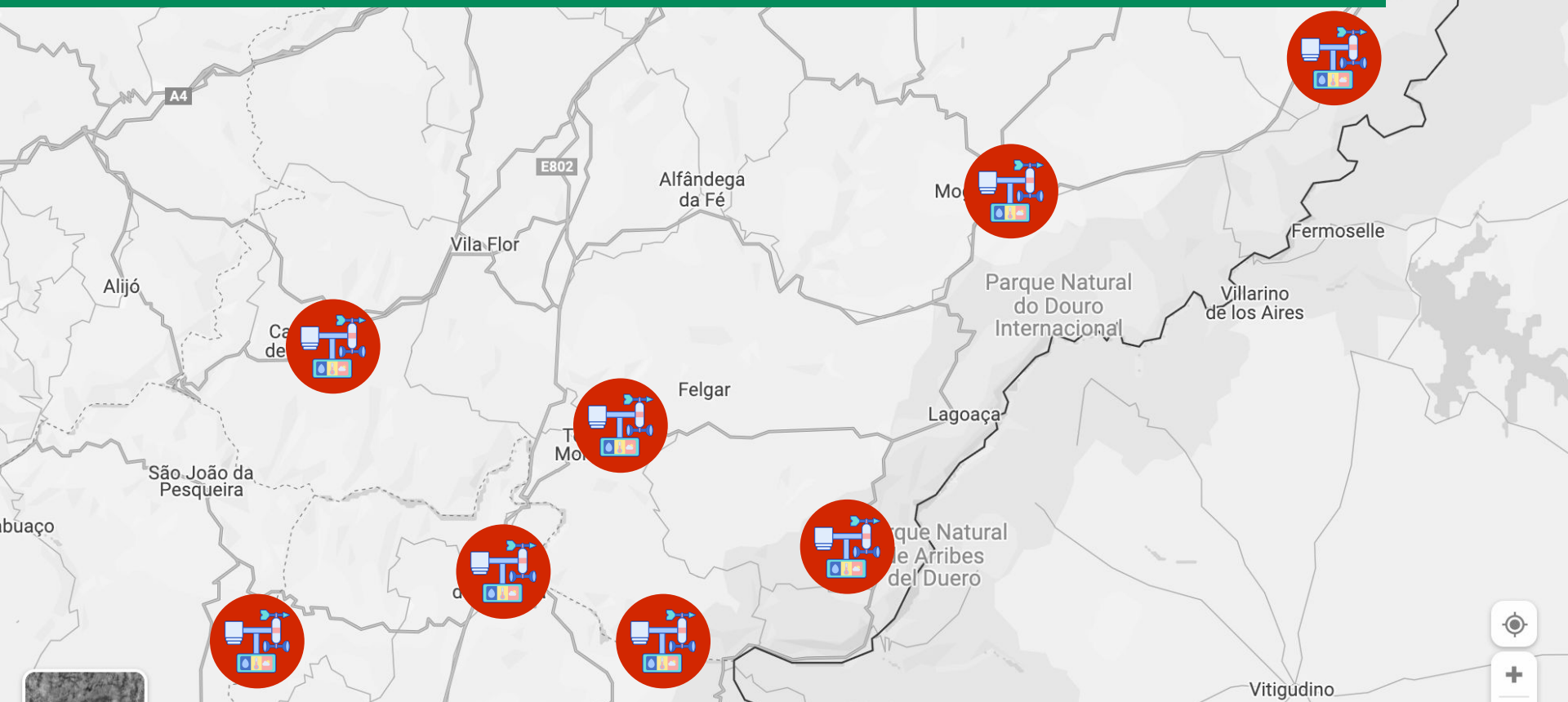
Estação de monitorização - modular

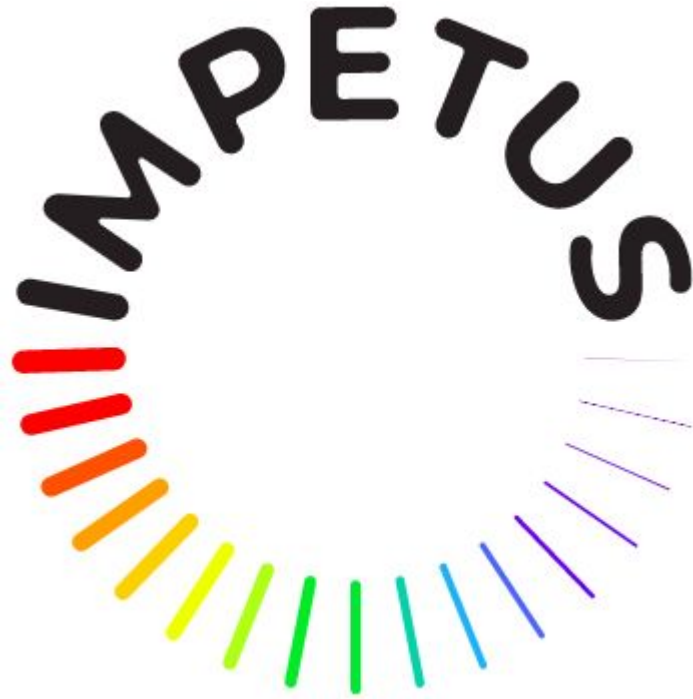


Desenvolvimento centrado no utilizador



Rede de monitorização





Funded by
the European Union

IMPETUS: setting a citizen science innovation programme for exploring innovative funding schemes and boosting recognition

Well Being Blitz



FACULDADE DE
MEDICINA
LISBOA

Porquê?

Prevalência de sobrepeso em crianças e adolescentes (5-19)

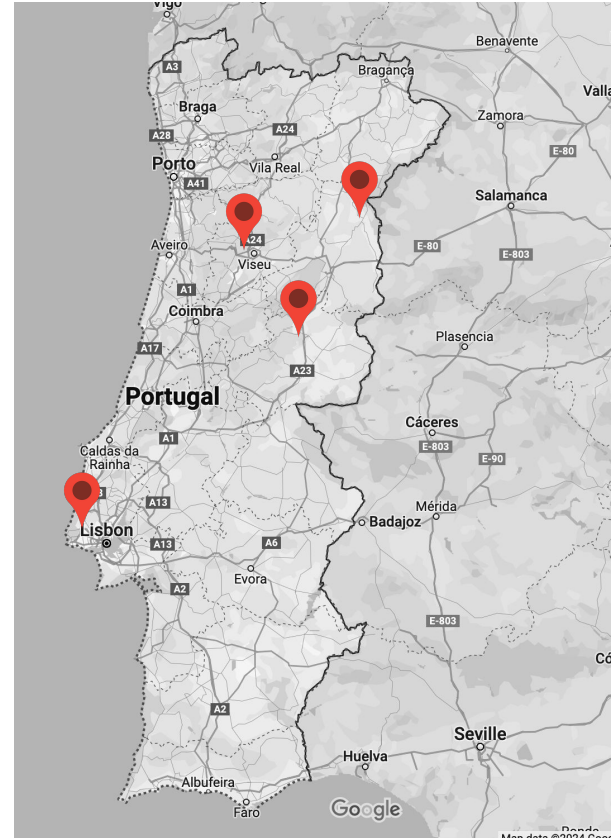
1990: 8%

2022: 20%

Como?

WellBeing Blitz quer contribuir para a co-construção de ambientes alimentares mais saudáveis

Adolescentes - cidadão cientistas analisam a dieta dos estabelecimentos alimentares em torno, e no interior, das suas escolas e universidades.





eu-citizen.science

What can you find here?

328

Projects

That are engaging the public in research via citizen science activities.

240

Resources

Useful for planning and running citizen science projects.

75

Training Resources

About the practice of citizen science.

323

Organisations

Involved in citizen science projects and research.

28


Platforms

To get an overview of further developments in citizen science.

4961

Users

You can connect with.

Show map 



eu-citizen.science

rede **ciência**
Cidadã.pt

cienciacidade.pt



CIÊNCIA CIDADÃ

SAVE DATE

ENCONTRO NACIONAL DE CIÊNCIA CIDADÃ

26 DE OUTUBRO | TEATRO THALIA

FCT 2020
CIÊNCIA VIVA
CIÊNCIA ABERTA

2.º ENCONTRO NACIONAL DE CIÊNCIA CIDADÃ

24 e 25 de Outubro 2019
Academia das Ciências de Lisboa

PARTICIPE

Envio de propostas até 5 de Julho

ENVIAR PROPOSTA

Encontro Nacional de Ciência Cidadã 2021



Construir pontes para uma ciência participada

25 e 26
de novembro



ENCONTRO NACIONAL CIÊNCIA CIDADÃ

27-28 | NOVEMBRO | 2023
COIMBRA

  **UNIVERSIDADE DE COIMBRA**



Rede Portuguesa de Ciência Cidadã

Oficializada, Nov 23 / Órgãos Sociais eleitos, Abr 24



Orgãos Sociais 2024-27



Cristina Luís



Maria Vicente



Inês Navalhas



Ilídio Costa



Elizabete Brigadeiro



António Gouveia



Elizabete Marchante



Maria João Leão



**Joana
Magalhães**



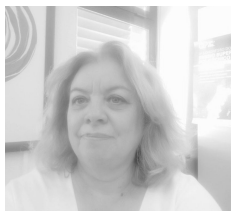
**Katarzyna
Azevedo**



Paulo Mota



Patrícia Tiago



Dina Rocha

- 1. Promover um maior conhecimento sobre o que é a ciência cidadã e maior envolvimento da sociedade na ciência através desta prática**
- 2. Apoiar e fortalecer a comunidade portuguesa de ciência cidadã**
- 3. Sensibilizar os diversos atores para a importância da Ciência Cidadã**
- 4. Estabelecer parcerias estratégicas**

**ENVOLVIMENTO SOCIETAL E
INCLUSIVIDADE**

**EDUCAÇÃO E
APRENDIZAGEM**

**ENVOLVIMENTO COM COMUNIDADES
E LIGAÇÕES A ENTIDADES LOCAIS**

**REDES E PROJETOS
INTERNACIONAIS**

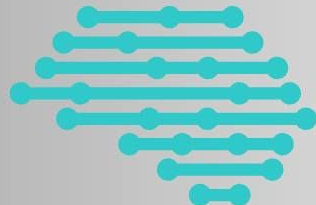


MESA REDONDA

5 de julho | 14:30 – 16:00

Ciência Cidadã: participação,
empoderamento e ação dos cidadãos

com
OCDE, FCT, Rede CC.pt, Science for Change, CCDR Norte, Município Oeiras, Polli.net



**CIÊNCIA
2024**

3-5 JULHO 2024

CENTRO DE CONGRESSOS DA ALFÂNDEGA DO PORTO
PORTO

rede  Ciência
Cidadã.pt

equipa@cienciacidada.pt