

Data-Driven Approaches to Studying the History of Museums on the Web: Challenges and Opportunities for New Discoveries

Dr. Nadezhda Povroznik
Wissenschaftliche Mitarbeiterin
FG - Humanities Data Science and Methodology
Institut für Geschichte
Technische Universität Darmstadt

September 12–13

**Digital 20
History 24
Switzerland**

University of Basel

DIGITALHISTORYSWITZERLAND2024GESCHICHTEUNDINFORMATIK#DIGHISTCH24DIGITALHISTORYSWITZERLAND2024UNIVERSITYOFBASEL
INFOCLIOCH#DIGHISTCH24SCHWEIZERISCHEGESCHICHTEUNDINFORMATIK#DIGHISTCH24DIGITALHISTORYSWITZERLAND2024INFOCLIOCH#DIGHISTCH24GESCHICHTEUNDINFORMATIK#DIGHISTCH24DIGITALHISTORYSWITZERLAND2024UNIVERSITYOFBASEL

**DigiHistCH24 conference theme:
‹Historical Research, Digital Literacy and Algorithmic Criticism›**

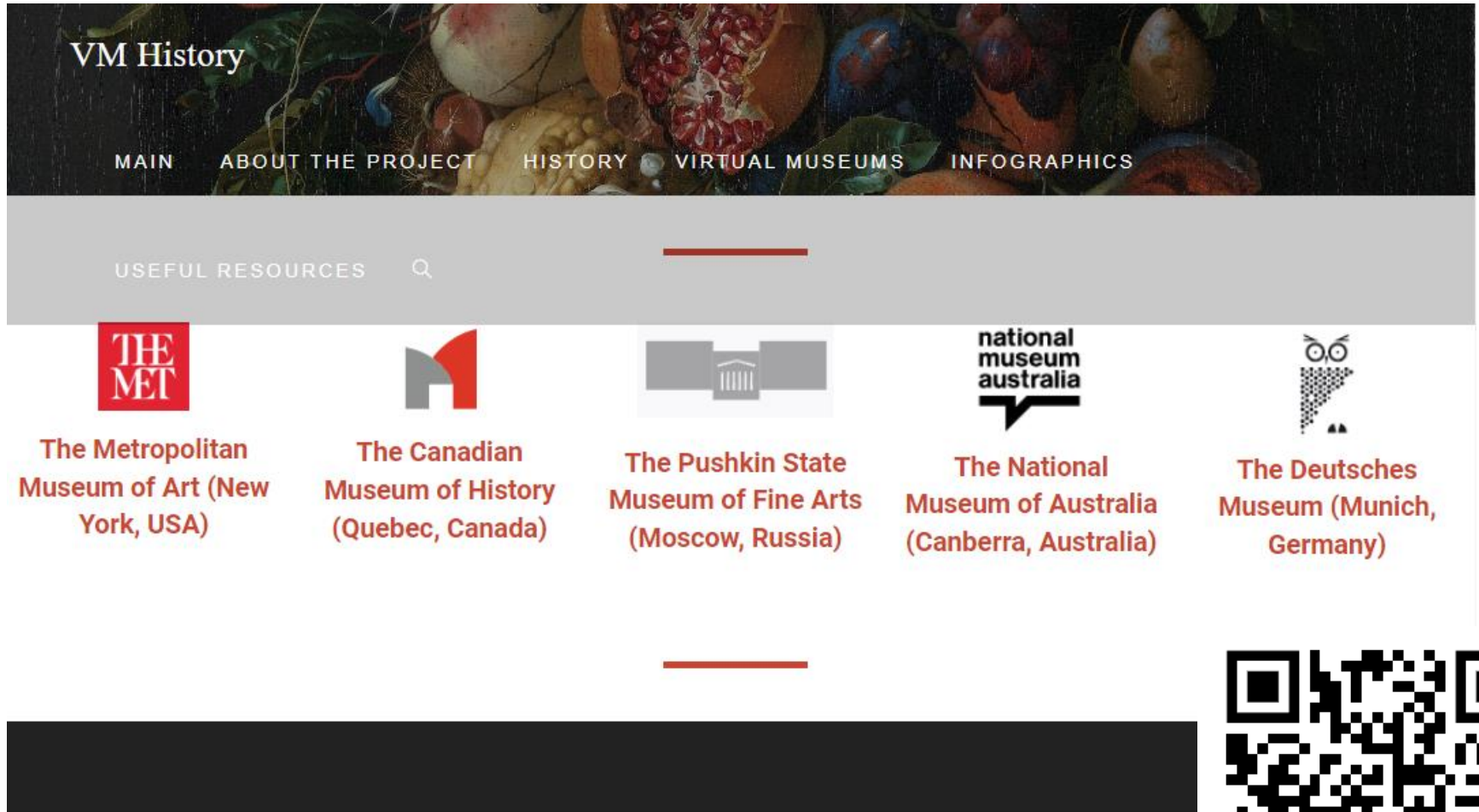
Digital History of Virtual Museums

<https://virtualmuseumhistory.com/>



Digital History of Virtual Museums: Case studies

<https://virtualmuseumhistory.com/virtual-museums/>





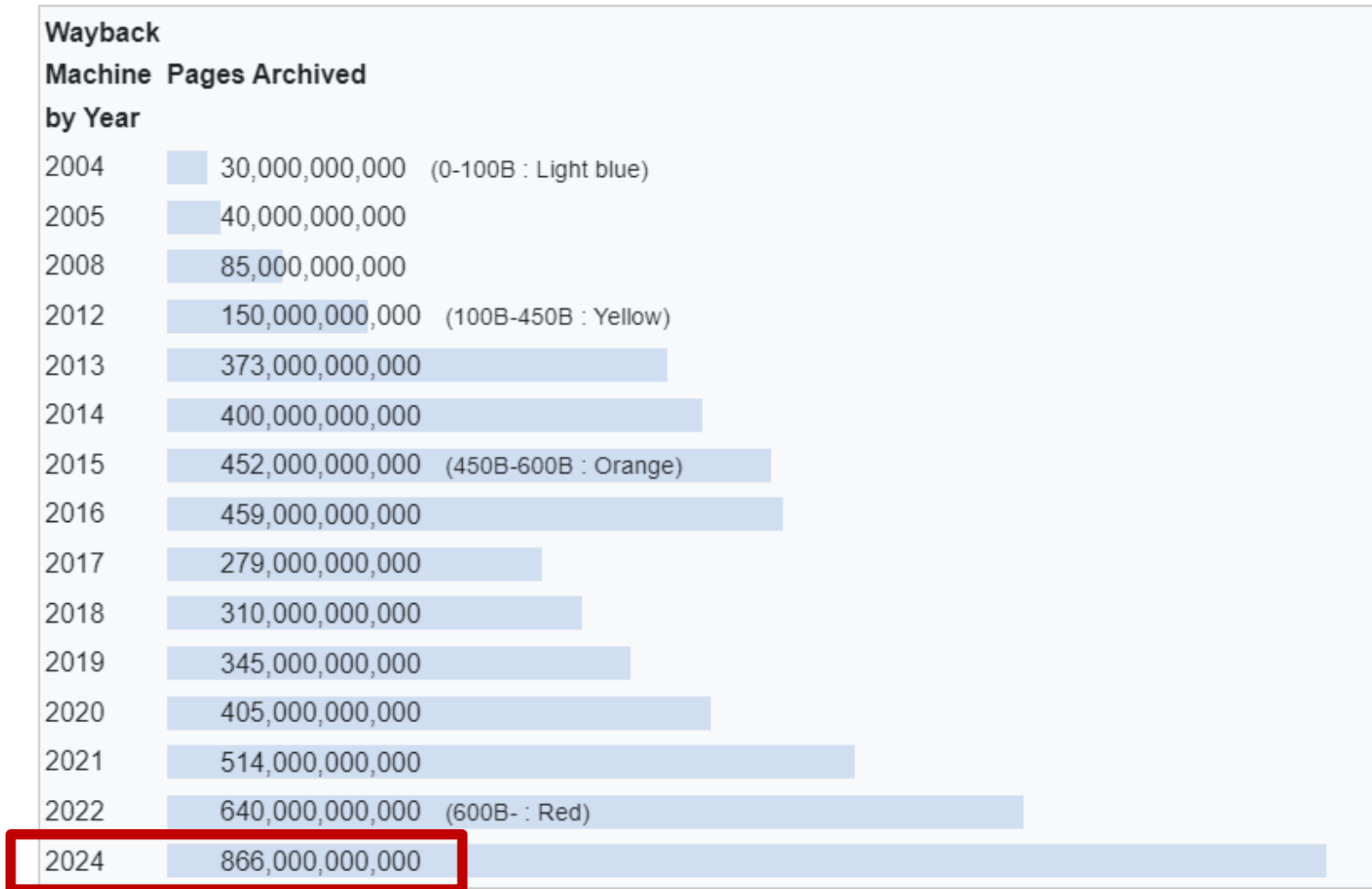
The image is generated by ChatGPT 4o.

The prompt: illustrate data-driven approach to the history of the museums on the web

INTERNET ARCHIVE



Wayback Machine Growth



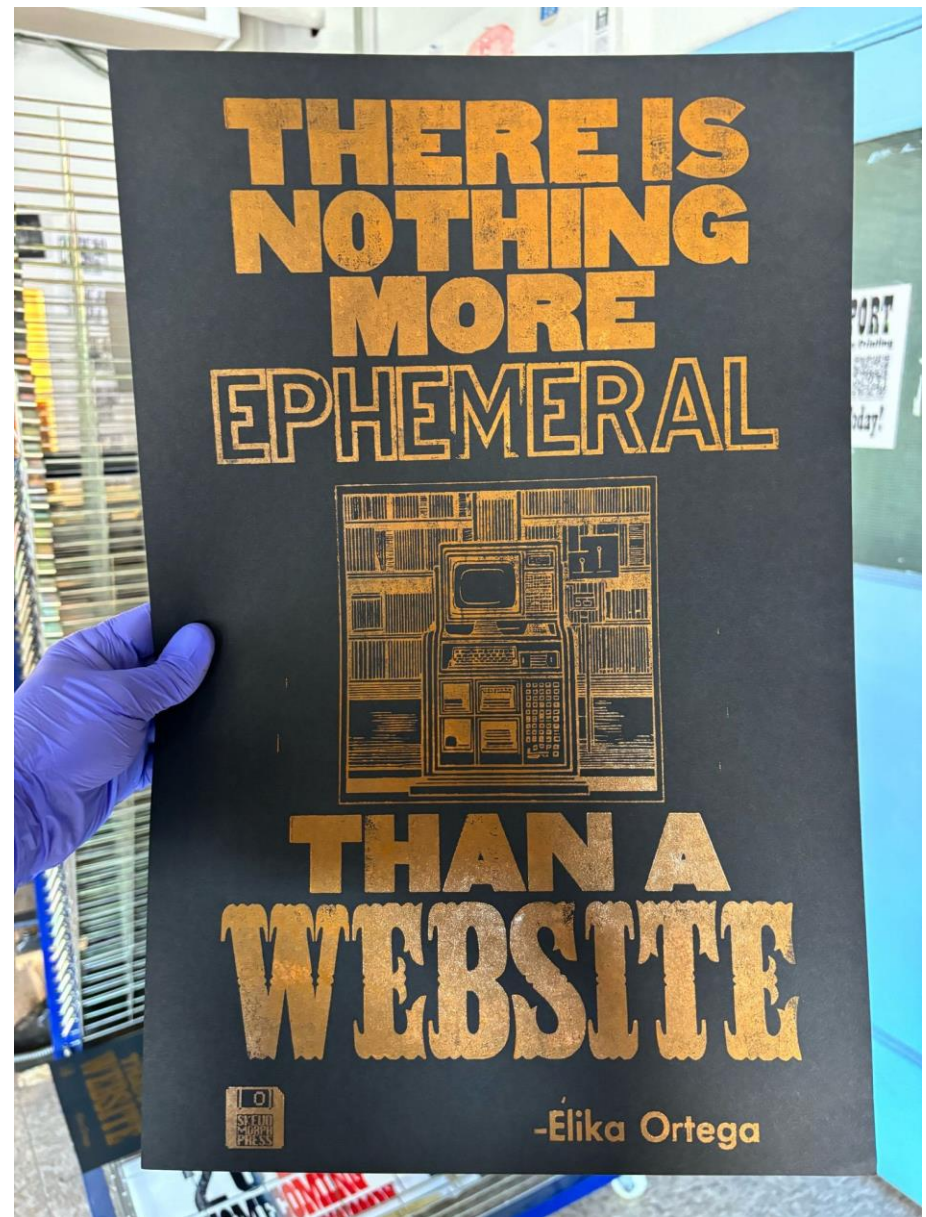
Wayback Machine. Wikipedia,
https://en.wikipedia.org/wiki/Wayback_Machine

Big-Data Issues

- **huge in volume**, consisting of terabytes or petabytes of data;
- **high in velocity**, being created in or near real-time;
- **diverse in variety**, being structured and unstructured in nature;
- **exhaustive in scope**, striving to capture entire populations or systems (n = all);
- **fine-grained in resolution** and uniquely indexical in identification;
- **relational in nature**, containing common fields that enable the conjoining of different data sets;
- **flexible**, holding the traits of extensionality (can add new fields easily) and **scaleability** (can expand in size rapidly).

Kitchin, Rob. 2014. "Big Data, New Epistemologies and Paradigm Shifts." *Big Data & Society* 1 (1). <https://doi.org/10.1177/2053951714528481>

What do we study?



Skeuomorph Press & BookLab at UIUC
https://bsky.app/profile/ryancordell.bsky.social/post/3l3esvn_ozbh26



THE METROPOLITAN MUSEUM OF ART
 NEW YORK
 1000 Fifth Avenue
 New York, New York
 10028

The Metropolitan Museum of Art is one of the largest and finest art museums in the world. Its collections include more than two million works of art -- several hundred thousand of which are on view at any given time -- spanning more than 5,000 years of world culture, from prehistory to the present.

This site is designed to give visitors an overview of the collections on display in the Museum's galleries. Also available are a Floor Plan, which includes information on services for visitors, and the Calendar, which offers a detailed current listing of special exhibitions, concerts, lectures, films, and other Museum activities, and the Gift and Book Shop, with over 100 of our best selling items available. The Metropolitan Museum of Art Guide, an illustrated handbook that is for sale in all of the Museum's shops, provides more information about the collections.

The Metropolitan Museum of Modern Art, Wayback Machine, Internet Archive. Snapshot on 11.11.1996, <https://web.archive.org/web/19961111003737/http://www.metmuseum.org>

Case Studies

National Museum of Australia, TROVE.
 Snapshot on 22.12.1996,
<https://webarchive.nla.gov.au/awa/19961221131034/http://www.nma.gov.au>

NATIONAL LIBRARY OF AUSTRALIA

Trove Archived webpages Q Adv Home About Site news Statistics Tags Help Contact us Login

Archived webpages

National Museum of Australia

What's on | Exhibitions | Collection | Products | About us | Bookings

AMOL
 Australian Museums On Line

Webmaster: webmanager@www.nma.gov.au

This webpage snapshot was captured on the 22 Dec 1996 00:10
 URL: <http://www.nma.gov.au/>

Obtaining Data: The MET

INTERNET ARCHIVE
WayBackMachine Explore more than 866 billion web pages saved over time

[DONATE](#)

Calendar · [Collections](#) · [Changes](#) · [Summary](#) · [Site Map](#) · [URLs](#)

Saved **33,751 times** between [November 11, 1996](#) and [September 8, 2024](#).

2001 2002 2003 2004 2005 2006 2007 2008 2009 2010 2011 2012 2013 2014 2015

◀ ▶

metmuseum.org, Calendar, Wayback Machine, Screenshot on 08.09.2024,
https://web.archive.org/web/2024000000000*/metmuseum.org

Obtaining Data: The MET

ARCHIVE-IT

HOME | EXPLORE | LEARN MORE | CONTACT US

The leading web archiving service for collecting and accessing cultural heritage on the web
Built at the Internet Archive

Explore >> Metropolitan Museum of Art >> The Metropolitan Museum of Art Web Archive

THE MET

The Metropolitan Museum of Art Web Archive
Collected by: Metropolitan Museum of Art

Archived since: Nov, 2019
Description: A collection of webpages and microsites created by The Metropolitan Museum of Art.
Subject: Arts & Humanities, Society & Culture
Creator: The Metropolitan Museum of Art
Date: 2019-
Rights: © The Metropolitan Museum of Art
Language: English

The Metropolitan Museum of Art Web Archive, Archive-IT, <https://www.archive-it.org/collections/13135>

Subject

Art (348)
Artists (252)
Interviews (244)
Art History (241)
Publication (238)
Exhibitions (47)
Publications (24)
History (22)
Programs (17)
Archives (16)
Libraries (16)
Blogs (14)
Fashion (8)
Education (7)
Politics and culture (4)

Date

2015- (241)
2020- (45)
2021- (17)
2000- (15)
2019- (6)
2023- (6)
2020 (5)
2011- (3)
2018- (3)
2021 (3)
Various (3)
2022 (2)
1938- (1)
2000 (1)
2007- (1)

Search Websites Filter Advanced Search **TROVE** ABOUT HELP NEWS

Home / Websites

Details

Title
Front page

Date archived
22 Dec 1996 00:10:34

URL
<http://www.nma.gov.au/>

Related information
View catalogue record in Trove for *Organised crime in Australia*
View catalogue record in Trove for *2020 Endeavour anniversary activities - National Museum of Australia*

[More snapshots...](#)

National Museum of Australia

What's on | Exhibitions | Collection | Products | About us | Bookings

AMOL
Australian Museums On Line

Webmaster: webmanager@www.nma.gov.au

National Museum of Australia, TROVE.
Snapshot on 22.12.1996,
<https://webarchive.nla.gov.au/awa/19961221131034/http://www.nma.gov.au>

NMA

Nma.gov.au, Calendar, Wayback Machine,
Screenshot on 08.09.2024,
https://web.archive.org/web/2024000000000*/Nma.gov.au

INTERNET ARCHIVE
WayBackMachine Explore more than 866 billion web pages saved over time

[DONATE](#)

[Calendar](#) · [Collections](#) · [Changes](#) · [Summary](#) · [Site Map](#) · [URLs](#)

Saved **4,289 times** between December 21, 1996 and September 8, 2024.

1996 1997 1998 1999 2000 2001 2002 2003 2004 2005 2006 2007 2008 2009 2010 2011 2012 2013 2014 2015 2016 2017 2018 2019 2020

How do we obtain data?

API INFORMATION

[Home](#) / [Archive.org](#) / [Technical Information](#) / [API information](#)

Extensive and detailed information about Internet Archive APIs can be found at archive.org/services/docs/api/index.html

Trove API

3.0.0-BETA

OAS3

[/v3/trove-api-v3.yaml](#)

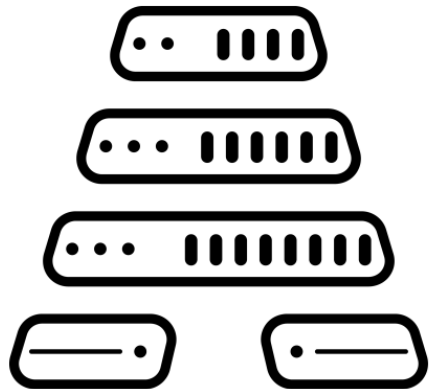
	Captures	Unique URLs
text/html	11,137,508	5,693,445
image/jpeg	4,431,051	305,778

Wayback Machine Downloader

<https://github.com/hartator/wayback-machine-downloader>

```
Downloading https://www.metmuseum.org/ to websites/www.metmuseum.org/ from Wayback Machine archives.  
Getting snapshot pages.....  
... found 1372457 snapshots to consider.  
  
file_list_curated: 1342067  
1342067 files to download:  
http://www.metmuseum.org:80/ -> websites/www.metmuseum.org/19961111003737/index.html (1/1342067)  
http://www.metmuseum.org:80/ -> websites/www.metmuseum.org/19961219004113/index.html (2/1342067)  
http://www.metmuseum.org:80/ -> websites/www.metmuseum.org/19970217203149/index.html (3/1342067)  
http://www.metmuseum.org:80/ -> websites/www.metmuseum.org/19970416052424/index.html (4/1342067)  
http://www.metmuseum.org:80/ -> websites/www.metmuseum.org/19970511181850/index.html (5/1342067)  
http://www.metmuseum.org:80/ -> websites/www.metmuseum.org/19970619043010/index.html (6/1342067)  
http://www.metmuseum.org:80/ -> websites/www.metmuseum.org/19971024144359/index.html (7/1342067)  
http://www.metmuseum.org:80/ -> websites/www.metmuseum.org/19971210061150/index.html (8/1342067)  
http://www.metmuseum.org:80/ -> websites/www.metmuseum.org/19980118222400/index.html (9/1342067)  
http://www5.metmuseum.org:80/ -> websites/www.metmuseum.org/19981201090220/index.html (10/1342067)  
http://metmuseum.org:80/ -> websites/www.metmuseum.org/19990117021812/index.html (11/1342067)  
http://metmuseum.org:80/ -> websites/www.metmuseum.org/19990208005322/index.html (12/1342067)
```


Research Infrastructures



ARCH

Archives Research Compute Hub

github.com/internetarchive/arch



GLAM Workbench

GLAM Workbench

Home

About >

Help >

GLAM data >

Trove >

DigitalNZ

Archives >

Heritage >

Libraries >

Web archives ✓

Notebooks >

Data >

Museums >

Government >

glam-workbench.net/web-archives/

- Web archives
- Notebooks
 - Timegates, Timemaps, and Mementos
 - Exploring the Internet Archive's CDX API
 - Comparing CDX APIs
 - Timemaps vs CDX APIs
 - Get a Memento
 - Find all versions of a web page
 - Harvest text from web pages
 - Harvest data about a domain
 - Explore Powerpoints from a domain
 - Explore all subdomains from gov.au
 - Compare versions of a page
 - Observe change in a page over time
 - Create full-page screenshots
 - Create a series of screenshots
 - Display changes in page text
 - Find when text appears
- Data

web-archives
v1.2.0 ☆ 21 🗨 8

GLAM Workbench

Web Archives

GLAM Workbench

Timegates, Timemaps, and Mementos

API documentation web archives

Works with AWA, IA, NLNZ, UKWA, & UKGWA

Systems supporting the Memento protocol provide machine-readable information about web archive captures, even if other APIs are not available. In this notebook we'll look at the way the Memento protocol is supported across five web archive repositories – the UK Web Archive, the National Library of Australia, the National Library of New Zealand, the UK Government Web Archive, and the Internet Archive.

Run live on Binder

GLAM Workbench, <https://glam-workbench.net/>

What do we obtain? **URL-analysis**

https://web.archive.org/web/20080515145825/http://www.metmuseum.org/explore/van_gogh/vangogh_alternate.html

https://web.archive.org/
web/
20080515145825/
http://www.metmuseum.org/
explore/
van_gogh/
vangogh_alternate.html

What do we obtain? **Subdomains issue**

https://web.archive.org/
web/
20080515145825/
http://**www.**metmuseum.org/
explore/
van_gogh/
vangogh_alternate.html

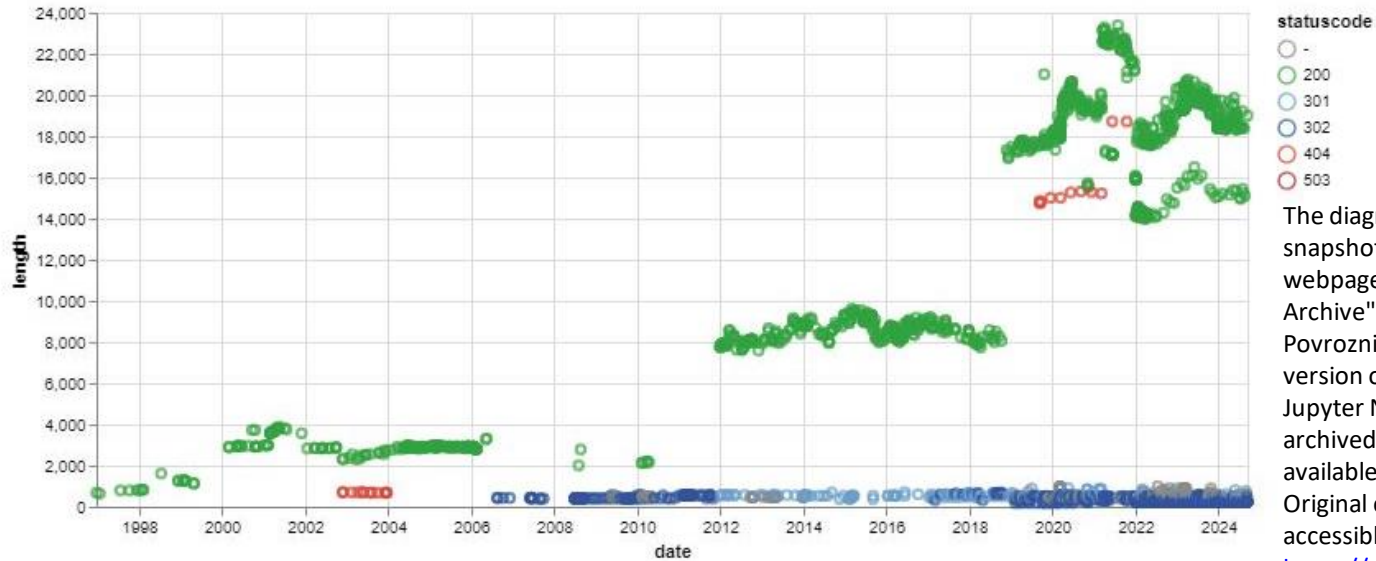


Title: The Artist Project | The Metropolitan Museum of Art
URL: [http://**artistproject**metmuseum.org](http://artistproject.metmuseum.org)

The Metropolitan Museum of Art Web Archive, Archive-IT, <https://www.archive-it.org/collections/13135>

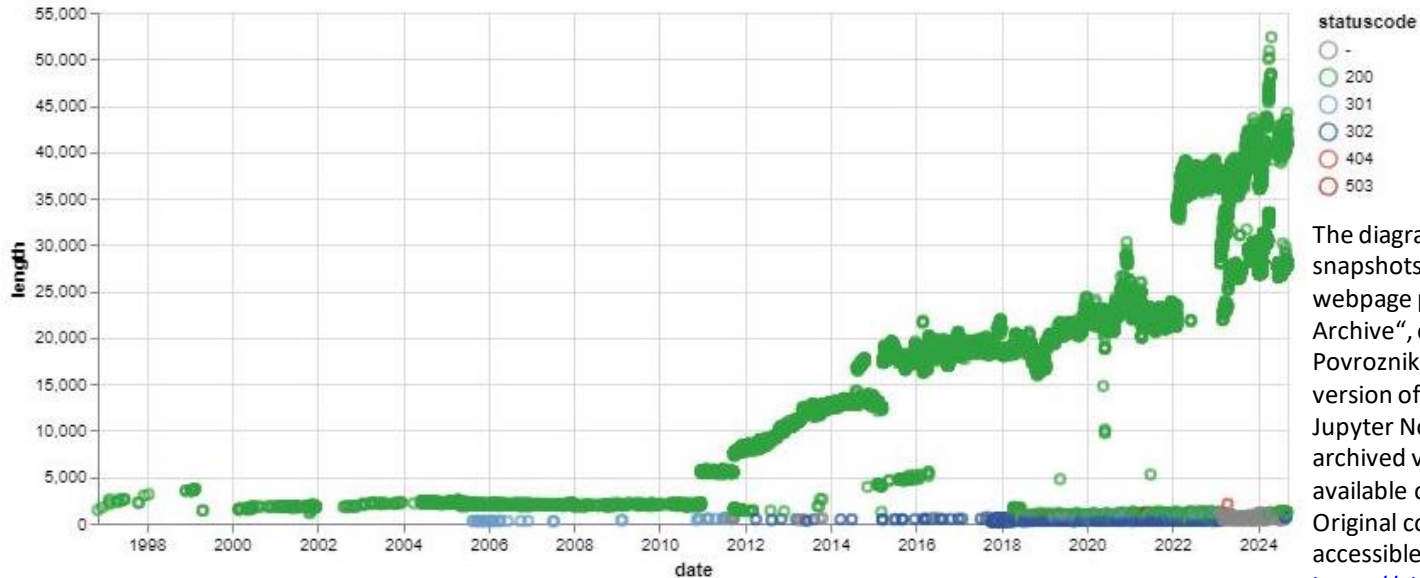
What do we obtain? A set of the webpages

NMA



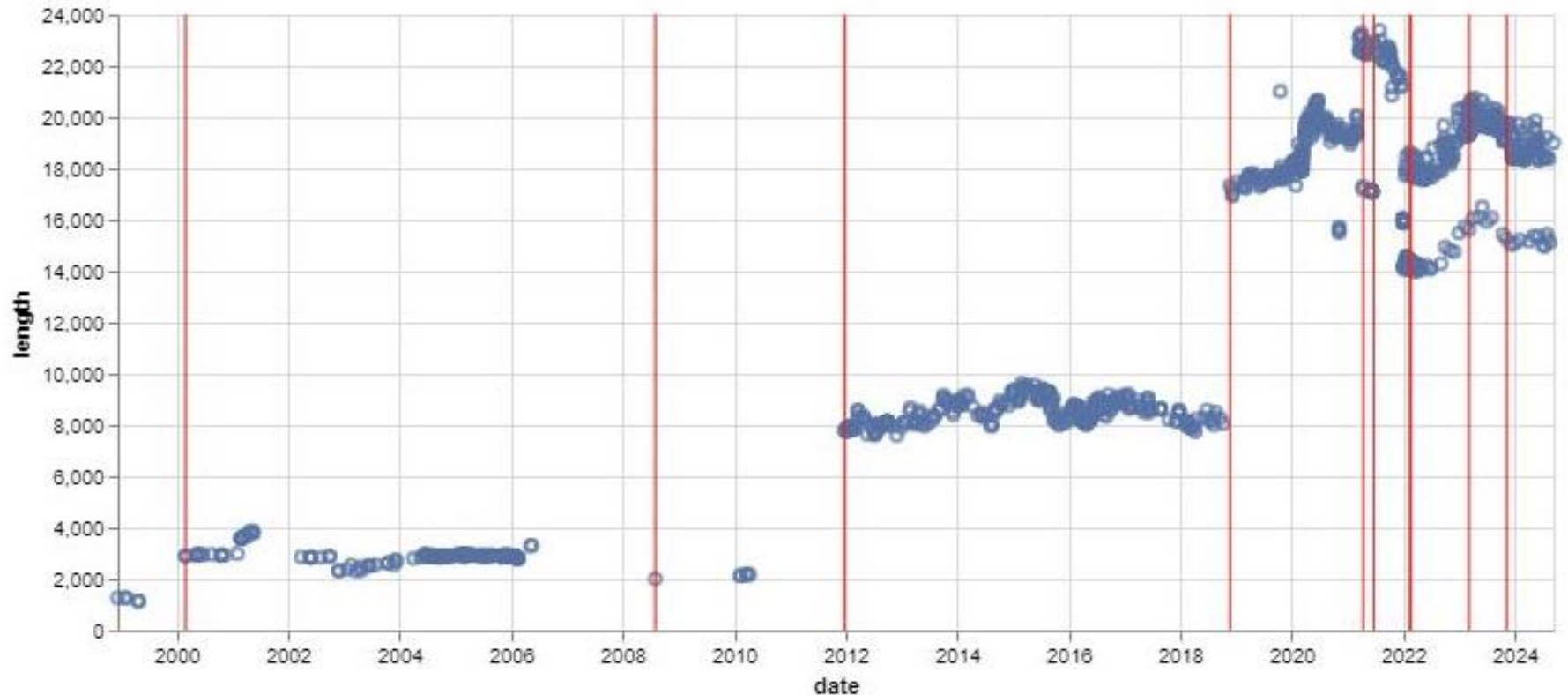
The diagram "Distribution of the snapshots of the nma.gov.au webpage preserved on the Internet Archive", created by Nadezhda Povroznik, is based on a modified version of the code from the Jupyter Notebook "Find all the archived versions of a web page," available on GLAM Workbench. Original code by Tim Sherratt, accessible at GLAM Workbench, <https://glam-workbench.net/web-archives/get-all-versions>

MET



The diagram "Distribution of the snapshots of the metmuseum.org webpage preserved on the Internet Archive", created by Nadezhda Povroznik, is based on a modified version of the code from the Jupyter Notebook "Find all the archived versions of a web page," available on GLAM Workbench. Original code by Tim Sherratt, accessible at GLAM Workbench, <https://glam-workbench.net/web-archives/get-all-versions>

What do we obtain? A set of the webpages



NMA: Periodisation

The diagram "Distribution of the snapshots of the nma.gov.au webpage preserved on the Internet Archive", created by Nadezhda Povroznik, is based on a modified version of the code from the Jupyter Notebook "Find all the archived versions of a web page," available on GLAM Workbench. Original code by Tim Sherratt, accessible at GLAM Workbench, <https://glam-workbench.net/web-archives/get-all-versions>



What do we obtain? A Complex of formats



The diagram "Screenshots 1996-2024 of the nma.gov.au webpage", created by Nadezhda Povroznik, is based on a modified version of the code from the Jupyter Notebook "Using screenshots to visualise change in a page over time," available on GLAM Workbench. Original code by Tim Sherratt, accessible at GLAM Workbench, <https://glam-workbench.net/web-archives/create-screenshots-over-time/>

NMA



The diagram "Screenshots 1996-2024 of the metmuseum.org webpage", created by Nadezhda Povroznik, is based on a modified version of the code from the Jupyter Notebook "Using screenshots to visualise change in a page over time," available on GLAM Workbench. Original code by Tim Sherratt, accessible at GLAM Workbench, <https://glam-workbench.net/web-archives/create-screenshots-over-time/>

MET

What do we obtain? Complex of formats

1997041130920	19980613231552	19990427020716	20000226202431	20000507132029	20000619203655	20001207203000	20010707111546	20020620100529	20031227185340	20030423054343	20030601920416	20030823237172	20040627012301	20041023232134	20041226203029	20050901172546	20060221163448
1997041131008	19980613231558	19990427023816	20000302112114	20000507130647	20000805152906	20001207204000	20010707111850	20020620100552	20031227185958	20030423100357	20030601935354	20030823234640	20040627012522	20041024011152	20041226204319	20050100101739	20060221163502
19980113152021	19980613231605	19990428005554	20000304224728	20000507142111	20000806143032	20001207204400	20010707111821	20020620100610	20031227190340	20030423100745	20030601935354	20030823232447	20040627012809	20041024012715	20041226204836	20051023235749	20060221163718
19980113152111	19980613231612	19990428012040	20000305012307	20000507155347	20000806160303	20001207205000	20010707112331	20020620100635	20031227190438	20030423100438	20030601938044	20030919079098	20040627013100	20041024013325	20041226210241	20051023236257	20060221163732
19980113153482	19980613231619	19990428021051	20000305036500	20000507163641	20000806160304	20001207210300	20010707112339	200206201006921	20031227190443	20030423102141	20030601942191	20031003203826	20040627013200	20041024014126	20041226211136	20051101213333	20060221164101
19980113153848	19980613231626	19990428023823	200003050594516	20000507171121	20000806160306	20001207210900	20010707112409	20020620100944	20031227190644	20030423102424	20030601170304	20031004150907	20040627013426	20041024014348	20041226212477	20051107005846	20060221164121
19980113156917	19980613231632	19990428036016	20000305102541	20000507174845	20000815220319	20001207010900	20010707113102	20020620101133	20031227190852	20030423192739	20030602230115	20031007071814	20040627013442	20041025174044	20041226211421	20051220111551	20060221164350
19980113171407	19980613231639	19990500155152	20000305112804	20000507190957	20000824115256	20010210021858	20010707113418	20020620101351	20031227191050	20030423193027	20030718161510	20031010023753	20040627013712	20041027074230	20041226213710	20051227164331	20060221164408
19980613211403	19980613231646	19990922160649	20000305165737	20000507202741	20000827059833	20010210244445	20010818143149	20020620101449	20031227191319	20030423193031	20030802062319	20031018141413	20040627013834	20041117092558	20041226215546	20060105040506	20060221165541
19980613211403	19980613231653	19990613152549	20000305191557	20000507209304	20000827093034	20010210244547	20010818143233	20020620101551	20031227191359	20030423193313	20030819173745	20031018141506	20040627013949	20041124084046	20041226210360	20060113220638	20060221165548
19980613211417	19980613231700	19991010185306	20000305195817	20000509104322	20000828014957	20010210245101	20010827133339	20020620101641	20031227191507	20030423193225	20030819181034	20031018141754	20040627014053	20041204122444	20041226238116	20060202001948	20060221170207
19980613211423	19980613231707	19991010212842	20000306008004	20000509125519	20000829123309	20010210249959	20010827141812	20020620101805	20031227191515	20030423193411	20030819181231	20031018141852	20040627014238	20041224205363	20041226204286	20060206042836	20060221170254
19980613211511	19980613231715	19991010230505	20000306012614	20000509163355	20000831000752	20010210260121	20011081718003	20020620102056	20031227191714	20030423193534	20030819181418	20031018141900	20040627014302	2004120420429	20050129091057	20060207052021	20060221165242
19980613211526	19980613231722	19991011001849	20000306031203	20000510151158	20000902001150	20010210260159	20011183003046	20020620102154	20031227191716	20030423193535	20030822195455	20031018141932	20040627014322	20041204203100	200505204072644	20060207052021	20060221165242
19980613211526	19980613230509	19991011011817	20000306052120	20000510161106	20000905011150	20010210260300	20011183002111	20020620102217	20031227191749	20030423193615	20030822195455	20031018142003	20040627014340	20041204203855	20050420173822	20060221151700	20060503030584
19980613211532	19980613231525	19991011013906	20000306062350	20000510161106	20000905011838	20010210260300	200112404444	20020620102345	20031227192100	20030423193631	20030822195415	20031018142005	20040627014420	20041204205633	20050720173438	20060221151700	20060516099214
19980613211539	19980613233533	19991011030737	200003060641820	200005127112114	20000905049826	20010210404819	20011125232324	20020620102657	20031227192317	20030423193906	20030822195820	20031018142036	20040627014423	20041204211058	200502092019094	20060221151716	20060516099756
19980613211546	19980613233539	19991011064813	20000306091321	2000050527124055	20000905200152	20010210476457	20011125224330	200206201063845	20031227192349	20030423194038	20030822195927	20031018142617	20040627014451	20041204211168	200502092019094	20060221151722	20060516099810
19980613211559	19980613233546	19991011081114	200003060920245	20000506108404	20000905234923	20010224120599	20011125224909	200206201065304	20031227192457	20030423194133	20030822200415	20031018142894	20040627014459	20041204211198	200502092019094	20060221151724	20060516099828
19980613211606	19980613233548	19991011095802	200003060930343	20000506523321	20000905405931	20010224174545	20011125225200	200206201065450	20031227192457	20030423194216	20030822200415	20031019060445	20040627014466	20041204213938	20050212193267	20060221151737	20060516099898
19980613211612	19980613233542	19991011120706	20000306094044	20000506523307	200009052804849	20010301207042	20011125230515	200206201065814	20031227192457	20030423194304	20030822200415	20031020083918	20040627014508	20041204224712	20050212191657	20060221151740	20060516099938
19980613231512	19980613235449	19991011135252	20000306095718	20000506523307	200009052804849	20010301207042	20011125231132	200206201065814	20031227192457	20030423194304	20030822200415	20031102195030	20040627014521	20041204225536	20050212192026	20060221151750	20060516099945
19980613231522	19980613233455	19991011152123	20000306095954	20000506523307	200009052804849	20010301207042	20011125232007	2002062010660126	20031227192457	20030423194304	20030822200415	20031102195030	20040627014521	20041204225536	20050212192026	20060221151750	20060516099945
19980613231206	19980613230562	19991011185836	20000306152613	20000506523307	200009052804849	20010301207042	20011125234542	2002062010660126	20031227192457	20030423194304	20030822200415	20031102195030	20040627014521	20041204225536	20050212192026	20060221151750	20060516099945
19980613231218	19980613233509	19991011209491	20000306190044	20000506523307	200009052804849	20010301207042	20011125234542	2002062010660126	20031227192457	20030423194304	20030822200415	20031102195030	20040627014521	20041204225536	20050212192026	20060221151750	20060516099945
19980613231223	19980613235156	19991011232952	20000306225414	20000506523307	200009052804849	20010301207042	20011125233940	2002062010660126	20031227192457	20030423194304	20030822200415	20031102195030	20040627014521	20041204225536	20050212192026	20060221151750	20060516099945
19980613231230	19980613235254	1999101126725	2000041614732	20000506523307	200009052804849	20010301207042	20011125233940	2002062010660126	20031227192457	20030423194304	20030822200415	20031102195030	20040627014521	20041204225536	20050212192026	20060221151750	20060516099945
19980613231237	19980613235351	19991011272704	20000416150643	20000506523307	200009052804849	20010301207042	20011125234143	2002062010660126	20031227192457	20030423194304	20030822200415	20031102195030	20040627014521	20041204225536	20050212192026	20060221151750	20060516099945
19980613231244	19980613235358	19991011318162	20000416173342	20000506523307	200009052804849	20010301207042	20011125235015	2002062010660126	20031227192457	20030423194304	20030822200415	20031102195030	20040627014521	20041204225536	20050212192026	20060221151750	20060516099945
19980613231251	19980613235345	1999101134821	20000420306118	20000506523307	200009052804849	20010301207042	20011125234143	2002062010660126	20031227192457	20030423194304	20030822200415	20031102195030	20040627014521	20041204225536	20050212192026	20060221151750	20060516099945
19980613231258	19980613235352	19991011395750	20000428105641	20000506523307	200009052804849	20010301207042	20011125234143	2002062010660126	20031227192457	20030423194304	20030822200415	20031102195030	20040627014521	20041204225536	20050212192026	20060221151750	20060516099945
19980613231305	19980613235360	19991014010349	20000430002559	20000506523307	200009052804849	20010301207042	20011125233940	2002062010660126	20031227192457	20030423194304	20030822200415	20031102195030	20040627014521	20041204225536	20050212192026	20060221151750	20060516099945
19980613231311	19980613235368	19991014014022	200004318438	20000506523307	200009052804849	20010301207042	20011125233940	2002062010660126	20031227192457	20030423194304	20030822200415	20031102195030	20040627014521	20041204225536	20050212192026	20060221151750	20060516099945
19980613231317	19980614000514	19991013001843	20000504183806	20000506523307	200009052804849	20010301207042	20011125234143	2002062010660126	20031227192457	20030423194304	20030822200415	20031102195030	20040627014521	20041204225536	20050212192026	20060221151750	20060516099945
19980613231330	19980614000519	19991013003407	20000504912148	20000506523307	200009052804849	20010301207042	20011125234143	2002062010660126	20031227192457	20030423194304	20030822200415	20031102195030	20040627014521	20041204225536	20050212192026	20060221151750	20060516099945
19980613231331	19981203042854	19991013003407	20000505214946	20000506523307	200009052804849	20010301207042	20011125234										

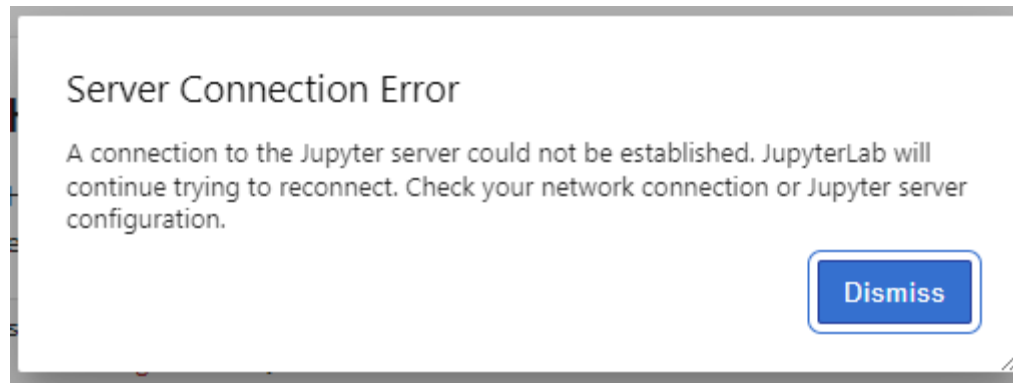
Building a Corpora

Harvesting a single url or list of urls

Get all human-visible text from all captures of a single url in the Australian Web Archive.

```
save_texts_from_url("ia", "http://nma.gov.au/", filter_text=False)
```

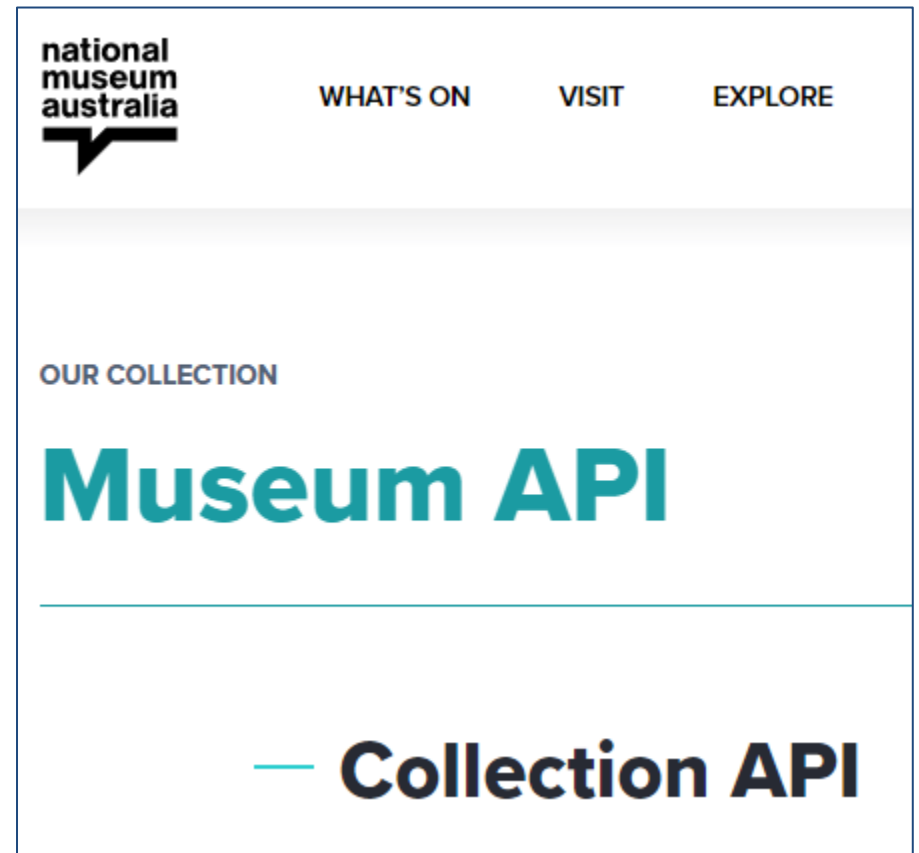
Captures: 0% | 19/4299 [02:15<17:56:14, 15.09s/it]



The Metropolitan Museum of Art Collection API

The Metropolitan Museum of Art Collection API,
<https://metmuseum.github.io>

Museums' APIs: Object Images



NMA, Collection API, <https://www.nma.gov.au/about/our-collection/museum-api>

Complexity

host **www.metmuseum.org**

Indexed on April 11, 2024.

See also: · Parent Domain Summary: metmuseum.org · TLD Summary: org

Saved **33,798 times** between **November 11, 1996** and **September 10, 2024**.

MIME-types Year Start Year End

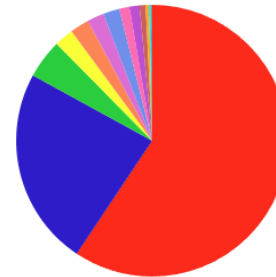
All text image application font audio video

Summary on MIME-types Count

Quick search on MIME-types.. << < 1 2 ... > >>

	Captures	Unique URLs
text/html	11,137,508	5,693,445
image/jpeg	4,431,051	305,778
text/css	869,592	50,560
image/png	428,525	3,861
image/svg+xml	424,359	492
font/woff2	374,467	1,049
image/gif	368,511	17,229
application/json	225,383	16,729
application/javascript	224,760	178,209
application/octet-stream	134,124	420

Captures



metmuseum.org, Summary, Wayback Machine, Screenshot on 08.09.2024, https://web.archive.org/web/2024000000000*/metmuseum.org

September 12–13

**Digital
History
Switzerland** 20
24

University of Basel

DIGITALHISTORYSWITZERLAND2024GESCHICHTEUNDINFORMATIK#DIGIHISTCH24SCHWEIZERISCHEGESCHICHTEUNDINFORMATIKDIGITALHISTORYSWITZERLAND2024UNIVERSITYOFBASELINFOCLIOCH#DIGIHISTCH24SCHWEIZERISCHEGESCHICHTEUNDINFORMATIK#DIGIHISTCH24DIGITALHISTORYSWITZERLAND2024INFORMATIC#DIGIHISTCH24

**DigiHistCH24 conference theme:
«Historical Research, Digital Literacy and Algorithmic Criticism»**



September 12–13

Digital History Switzerland 2024

University of Basel

DigiHistCH24 conference theme:

«Historical Research, Digital Literacy and Algorithmic Criticism»

- Valuable data
- New insights
- Source criticism
- Web preservation
- Complexity in obtaining data
- Lowering the entry barrier
- Completeness
- Reliability
- Biases
- Limits
- Challenges

Thank you!