

A methodology to build causal models within critical realism

Vincent Martin-Schreiber¹ Cristián Navarrete²

¹University of Ottawa (Canada)

²Pontificia Universidad Católica de Chile

2024-08-01

Agenda I

Introduction

PhD Thesis

Methodology: Structural Causal Model

What's in it for Critical Realists (and everyone)?

Conclusion

References

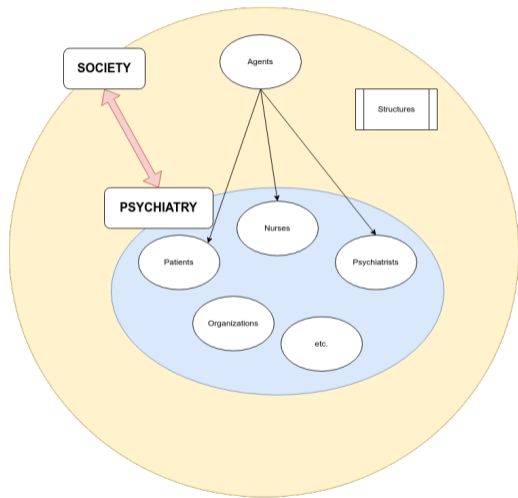
Introduction



Vincent Martin-Schreiber
MEng, BScN, PhD candidate
PhD Candidate - Faculty of Health
Science, School of Nursing
University of Ottawa (Canada)



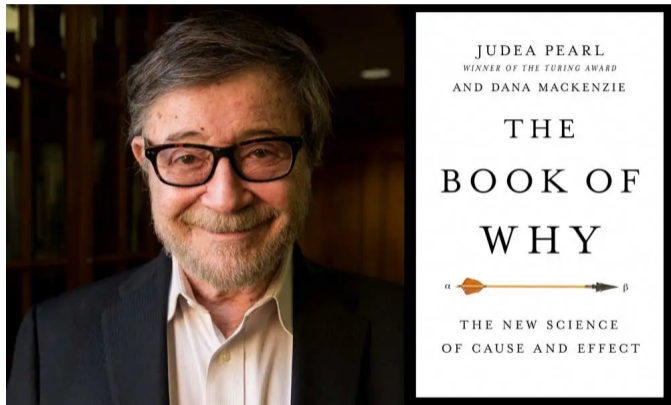
Cristián Navarrete
MSc Sociology
Pontificia Universidad Católica de Chile
<https://crisnavarrete.github.io/cnavarrete/>



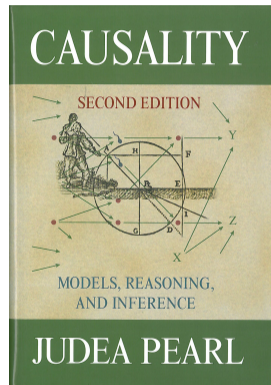
Research Question

What causal mechanisms play a role in the assignment of a diagnosis of Borderline Personality Disorder?

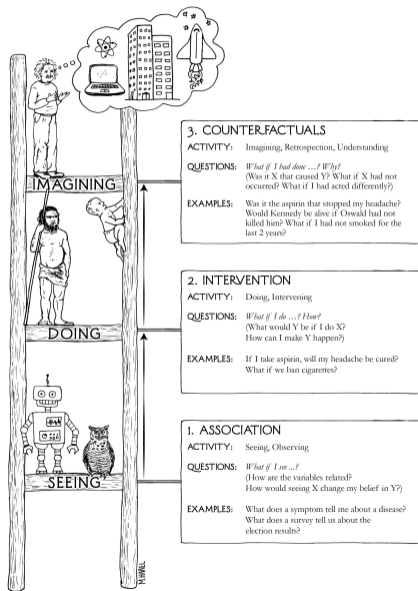
Methodology: Structural Causal Model



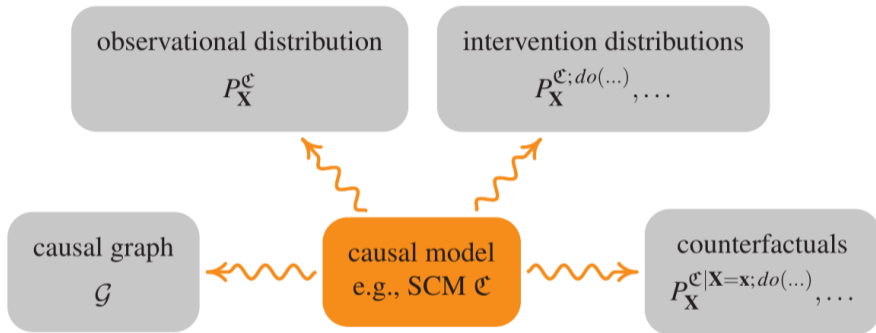
(Pearl, 2009, 2018)



Ladder of Causation



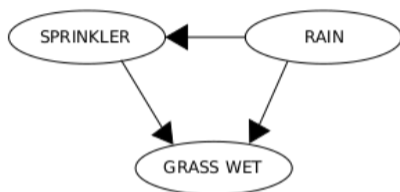
What is a Structural Causal Model (SCM)?



(Peters et al., 2017)

What is a Directed Acyclic Graph (DAG)?

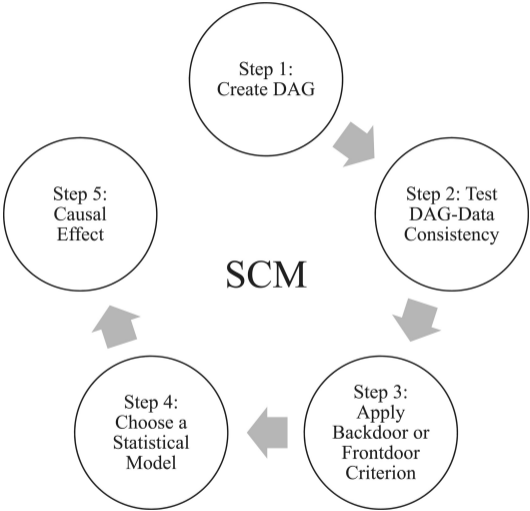
RAIN	SPRINKLER	
	T	F
F	0.4	0.6
T	0.01	0.99



RAIN	T	F
	0.2	0.8

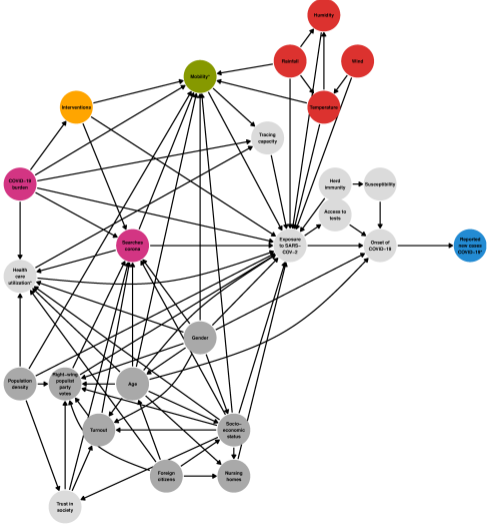
SPRINKLER	RAIN	GRASS WET	
		T	F
F	F	0.0	1.0
F	T	0.8	0.2
T	F	0.9	0.1
T	T	0.99	0.01

SCM Workflow



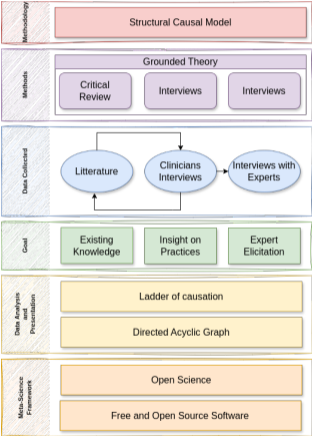
(Arif & MacNeil, 2023)

Example

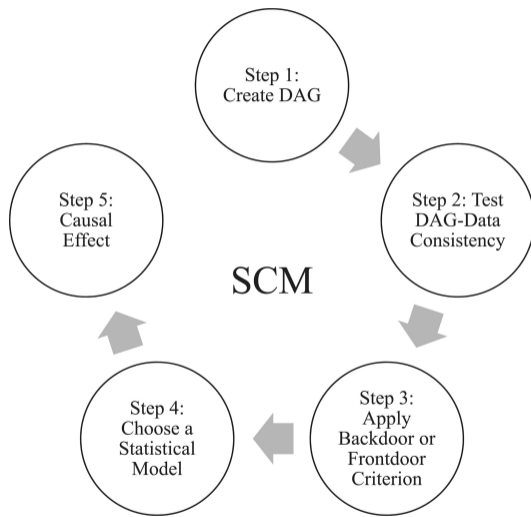


(Steiger et al., 2021)

How to build a DAG



What do you do next with your DAG?



(Arif & MacNeil, 2023)

What's in it for Critical Realists (and everyone)?

- ▶ a visualization tool for causal theories
- ▶ transitivity of knowledge: keep track of knowledge building
- ▶ a human-driven AI approach in a context of big data.
- ▶ collaboration between disciplines (and beyond) - Wikipedia model?
- ▶ Open science: tracking of the decisions and what led to them.
- ▶ Morphogenetic approach.
- ▶ a tool to generate research projects.
- ▶ “DAG now, input the data later”

Conclusion

- ▶ a promising methodology for CR
- ▶ a communication tool!

<https://zenodo.org/doi/10.5281/zenodo.13142808>

References I

- Arif, S., & MacNeil, M. A. (2023). Applying the structural causal model framework for observational causal inference in ecology. *Ecological Monographs*, 93(1), e1554. <https://doi.org/10.1002/ecm.1554>
- Pearl, J. (2009). *Causality: Models, reasoning and inference* (2nd ed.). Cambridge University Press. <https://doi.org/10.1017/CBO9780511803161>
- Pearl, J. (2018). *The book of why: the new science of cause and effect* (1st ed.). Basic Books.
- Peters, J., Janzing, D., & Schölkopf, B. (2017). *Elements of causal inference: Foundations and learning algorithms*. The MIT Press. <http://library.oapen.org/handle/20.500.12657/26040>

References II

Steiger, E., Mussnug, T., & Kroll, L. E. (2021). Causal graph analysis of COVID-19 observational data in German districts reveals effects of determining factors on reported case numbers. *PLOS ONE*, *16*(5), e0237277.
<https://doi.org/10.1371/journal.pone.0237277>