



HISTOPATHOLOGICAL CHANGES IN GILL AND HEPATOPANCREAS OF MANGROVE CRAB, *PERISESARMA BIDENS* EXPOSED TO PROFENOFOS

*A. Maharajan, V. Ganapiriya, K. Shanmugavel, A. Amsath and S. Kasthuri

PG and Research Department of Zoology, Khadir Mohideen college, Adirampattinam-614701, Tamil Nadu, India

Article History: Received 10th September 2016; Accepted 16th November 2016; Published 31st December 2016

ABSTRACT

The purpose of the present study is to provide information on the effect of profenofos on the crab, *Perisesarma bidens*, a biologically significant mangrove crab. The crabs were exposed to profenofos concentrations of 0.038 ppm and 0.076 ppm (sublethal) for 28 days. The exposed gill tissue exhibited epithelial edema, necrosis, lifting, fusion of secondary lamellae etc. The histopathological symptoms in hepatopancreas were infiltration, large lumen formation and disappearance and bursting of haemocytes. In man, consumption of these crabs will cause the ill effects that are specific to the toxicant. This process will damage the organism silently, without causing any immediate abrupt changes. The changes may be at genetic levels inducing genotoxicity, but concerted effort in reducing the use of profenofos and implementing natural remedies for disease control in shrimp hatchery can help resolve the problem toxicant.

Keywords: Histopathology, Gill, Hepatopancreas, *Perisesarma bidens*, Profenofos.

INTRODUCTION

With rapid industrialization and increase in human population, the pollution of water bodies has become a universal phenomenon in the present day world (Bela and Prasad, 2008). Environmental pollutants are becoming toxicants due to their adverse effects on living beings. Ecological impacts of waste from agro industries are inevitable due to their wide composition (Thakur, 2006). Now days, toxicity studies of such pollutants in environment are gaining immense importance. Aquatic contamination by pesticides is the major problem in developing countries. Pesticides are applied for crop protection and mitigation of pests, but only 0.1 % of the applied pesticides reach the target pests, with the remaining amount persisting and spreading throughout the environment (Hart and Pimentel, 2002; Mahboob *et al.*, 2011). The organophosphates and carbamates are group of synthetic insecticides and are potent neurotoxic molecules (Lundebye *et al.*, 1997), which are used in the developing countries to control different agricultural pests (Vioque-Fernandez *et al.*, 2007; Banni *et al.*, 2005; Ghazala *et al.*, 2014).

Now a day's many pesticides have extensively used and are utilized in agricultural operation. These pesticides have various physiological effects such as enzyme inhibition, inhibitory effects on growth, food intake, metabolism and general development of animal (Tungare

and Sawant, 2000). Profenofos, a well-known organophosphate pesticide has been in agricultural use over the last two decades for controlling pests of paddy, cotton and tobacco. Profenofos is extremely toxic to fish and macro invertebrates. Indiscriminate use of pesticides and their untreated effluents affects fish and other aquatic animal (Wanee *et al.*, 2002). The estimated annual application of pesticides worldwide is more than 4 million tons, but only 1% of this reaches the target pests (Gavrilescu, 2005).

Gills apart from being the primary respiratory organ in crabs, are also responsible for other vital physiological functions like excretion of nitrogenous wastes, acid base balance and ion regulation. So when crabs are exposed to environmental pollutants, these vital functions are deleteriously affected and the functional impairment of gills can significantly damage the health of fish (Alazemi *et al.*, 1996; Kumar and Tembhe, 2010). There are several reports in the literature on the histopathological effects of pollutants in the gills of crustaceans and fish (Richmonds and Dutta, 1989; Baticados and Tendencia, 1991; Bigi., 1996; Randi *et al.*, 1996; Maharajan *et al.*, 2012a, b, 2013, 2015). The gills are efficient tools for biomonitoring potential impacts (Oliveira Ribeiro *et al.*, 2005) because of their large area in contact with the water and high permeability (Arellano *et al.*, 2004; Evans *et al.*, 2005; Vigliano *et al.*, 2006), and environmental impact caused by

pollutants may affect fish gills tissues (Zeeman and Brindley, 1981; Schwaiger *et al.*, 1997; Teh *et al.*, 1997).

The crustacean hepatopancreas or digestive gland is the major organ in the digestive system and plays a vital role during metabolism. It functions in food absorption, synthesis and secretion of digestive enzymes and in the storage of lipids, glycogen and minerals during the intermoult period. It functions as both liver and pancreas. The hepatopancreas is the main organ of reserve and detoxification of xenobiotics in crustaceans, and is highly sensitive to physiological and environmental changes (Johnston *et al.*, 1998). The morphology and histology of *P. argentinus* hepatopancreas were described previously, and were observed important tissular dynamics associated with the molting cycle (Sousa and Petriella, 2001).

Crustaceans are important constituent and has fundamental role in aquatic food chains specifically in nutrient cycle, water quality monitoring and small-scale fisheries with their ecological and economical importance. Grapsid crabs in the subfamily Sesarminae are key faunal components of many intertidal mangrove ecosystems. Although their feeding and burrowing activities play important roles in the processing of plant material and nutrient cycling, relatively little known about ecological interactions that regulate populations or influence species composition of intertidal crab assemblages. *Perisesarma bidens* is a small mangrove crab inhabiting the muddy substratum of estuarine and mangrove environments, and enjoys a wide range of distribution in the tropics. Less attention towards the morphology and histology of the body tissues in crab *P. bidens* has made us to undertake the work and the major objective of the present paper is to study histopathological alterations in the gill and hepatopancreas of *P. bidens*.

MATERIAL AND METHODS

General description of the test animal

The sesamid crab, *Perisesarma bidens* (red-clawed crab) (De Haan, 1835) inhabits the muddy substratum of estuarine and mangrove environments, and enjoys a wide range of distribution in the tropics. The distribution of this species shows the best compromise between its physiological and space requirements and conditions existing in these habitats. In most places, it is found coexisting with other species of crabs. These small crabs feed on plant debris, mainly roots, stems, and leaves of mangrove plants.

Test animal collection and maintenance

Mangrove crab, *Perisesarma bidens* of carapace size ranging from 2- 4cm and weights 20-35g were collected from the mangrove regions of Muthupettai Tamil Nadu. They were transported and kept for acclimatization in rectangular tank of 100 li capacity containing well aerated filtered fresh water maintained at ambient temperature (27±2°C) for a period of one week. Before stocking, the

tank was washed with clean water several times. Finally, the tank was washed with 0.1% KMnO₄ for disinfection. Before introducing into the tank, the fishes were screened for any visible pathological symptoms and were treated with 0.1% of KmNo₄.

Exploratory test

Exploratory tests, otherwise called range finding test, were carried out to assess the approximate effective concentration range of profenofos required for conducting short term tests to assess the effect of profenofos on the metabolic function of the crab, as recommended by APHA (1985). The test solutions were prepared over a wide range of concentrations. These tests were performed by exposing 10 specimens of crab, *P. bidens* in 10 litre fresh water containing different concentrations of profenofos. The dead animals were removed immediately. Death of each animal was recorded. Three replicates were made for short-term toxicity tests, the least concentration was chosen where no mortality was recorded in 24hrs and the highest lethal concentration was where 100% mortality was recorded in 24hrs.

Acute Toxicity test

To study the toxicity of nitrite, the Static Bioassay Method (APHA, 1985) was followed. The test individuals were exposed to selected and serially diluted profenofos concentrations. For acute toxicity test, 10 active animals each were exposed to various concentrations of the profenofos (0.005, 0.010, 0.020, 0.030, 0.040, 0.050, 0.060 and 0.070 ppm) using fresh water as control. The manifestation time and survival time of crab were observed. Crabs were exposed to the above said concentrations along with common control. Experimental animals were starved for one week. The experiments were conducted in three replicates at room temperature. No feed was given during the test period.

Sub lethal toxicity tests

For sublethal toxicity tests, the crabs were grouped into three batches. Each batch had 10 animals and had 3 replicates.

Group: I

Crabs were maintained in normal water and served as control.

Group: II

Crabs were exposed to the sublethal concentration of 0.0038ppm (1/10th of LC₅₀ value for 96 hours) of profenofos in Fresh water.

Group: III

Crabs were exposed to the sublethal concentration of 0.0076ppm (1/20th of LC₅₀ value for 96 hours) of profenofos in Fresh water.

The media were renewed every alternate day. Crabs were fed daily with artificial feed. Two specimens each from the groups I, II and III were sacrificed after 0, 7th and 28th of the experiment.

Evaluation of histopathology

At the interval of 0, 7th and 28th days one crab from each concentration of profenofos was picked out randomly. The animal was sacrificed and muscle and hepatopancreas tissue in small pieces of 4-5 mm sizes were fixed immediately in Davidson's Fixative for 24 h. The preserved tissues were processed by a routine histological method (Humason, 1972), dehydrated in alcohol series and embedded in paraffin wax. They were cut into sections of 6 mm thickness by a rotary microtome (Weswox, MT1090:1090A, India). The thin sections of the tissues were stained by haematoxylin and eosin for observation by the Nikon Bright field transmission microscope with Koehler illumination, and an automatic exposure unit was used.

RESULTS

Histology of Gill

The gills of *Perisesarma bidens* are formed of a number of lamellae or broad flattened plates arranged serially in pairs along a control gill stem. The central axis of gill tissue is the primary gill lamellae and it further divides into secondary gill lamellae or filaments. The control gill exhibit a thin layer of cuticle covers the entire outer surface. Underlying the cuticle is a continuous layer of epithelial cells. At irregular intervals pillar cells join the lamellae. The distal part of the lamella is expanded. The epithelial cells of the lamellae are continued as the lining of the gill stem and large connective tissue cells compose the chief support of the gill stem (Plate 1a & b).

Histopathology of Gill

In lower concentration of 0.0187ppm (1/10th of LC₅₀ value for 96 hours) the changes were perceptible enlargement of intralamellar space densely packed with granular material, and loss of gill structure (Plate 1c). The gill lamellae get collapsed in exposed crab gill due to the disruption of the pillar cells. In the case of higher concentration 0.0374ppm (1/20th LC₅₀ value for 96hrs) after 7 days of exposure the following changes were seen: haemocoel with coarse amorphous to fibrous materials, thickened gill lamellae, and massive haemocytic infiltration (Plate 1d). Detached cuticle (DC) and rupture of capillaries (RC) at tip of the secondary lamellae releasing haemocytes are evident in later stages. In low concentration after 28 days of exposure the cytoplasm of phagocytes were found to be free from any engulfed material, and gills developed bulbular swelling at the tip (Plate 1e). Epithelial necrosis and hyperplasia were also observed in later stages. Enlargement of secondary gill lamellae (ESGL) and disarrangement of

secondary gill lamellae (DSGL) are seen in the exposed crabs at higher concentrations after 28 days of exposure. Edema and rupture of epithelial cells (EREC) and pyknotic nuclei (PN) are distinctly seen in experimental gills. These pathologies with the absence of the pillar cells collapse the entire lamellae. In some regions infiltration of haemocytes (IH) are also noted and this resulted in the swelling of secondary lamellae (SSL). In higher concentration, the gills exhibited lamellar fusion in some regions as a result of filamentary epithelium proliferation (Plate 1f).

Histology of Hepatopancreas

In the control crab the yellowish-brown tissue of the hepatopancreas occupied much of the cephalothoracic cavity. The histology of control crab exhibited the well organized glandular tubular structure. Histologically, the tubules consisted of an epithelium composed of four cell types E-cells (embryonic), the F-cells (fibrillar), the Bcells (blister like), and the R-cells (resorptive). The E-cells, which were generally among the smallest of the hepatopancreatic cell types, were undifferentiated polyhedral cells. They had high nucleo-cytoplasmic ratio, and were concentrated in the distal tip of the tubules, which is the area of proliferation. The F-cells, which appeared striated due to extensively developed rough endoplasmic reticulum, were tall columnar epithelial cells with basally situated nuclei. They are secretory in function and present in the mediobasal, and medioproximal portions of the tubules. The B-cells, which are secretory and excretory in function have a single large vacuole and compressed basal nuclei were the largest of hepatopancreatic cell types seen mainly in the proximal areas of the tubules. The R-cells, the most abundant of the four cell types, had multi-vacuolated cytoplasm and are storage in nature. They were seen in the mediobasal and proximal areas of the tubules (Plate 2 a & b).

Histopathology of Hepatopancreas

In lower concentration (10% LC₅₀ 0.0187 ppm) after 7 days of exposure slight changes were observed in B-secretory cells and F- fibrillar cells (Plate 2c). In higher concentration after 7 days of exposure (20% LC₅₀ 0.0374 ppm) general degeneration of the tubular and intertubular tissues was observed, so also extensive vacuolation and complete loss of tubular structures and necrosis (Plate 2d). In the lower concentration after 28 days of exposure, the cells were disfigured; clumped and intercellular spaces could not be observed (Plate 2e).

In 20% sublethal concentration after 28 days of exposure, large numbers of vacuoles appeared in the tubular epithelial cells of hepatopancreas. In addition, Thickening of the basal lamina and a decrease in cell height, bulging of myoepithelial layer, damaged myoepithelial layer and elongated haemocytes were also conspicuous. More number of haemocytes near the ruptured capillaries in severe cases (Plate 2f).

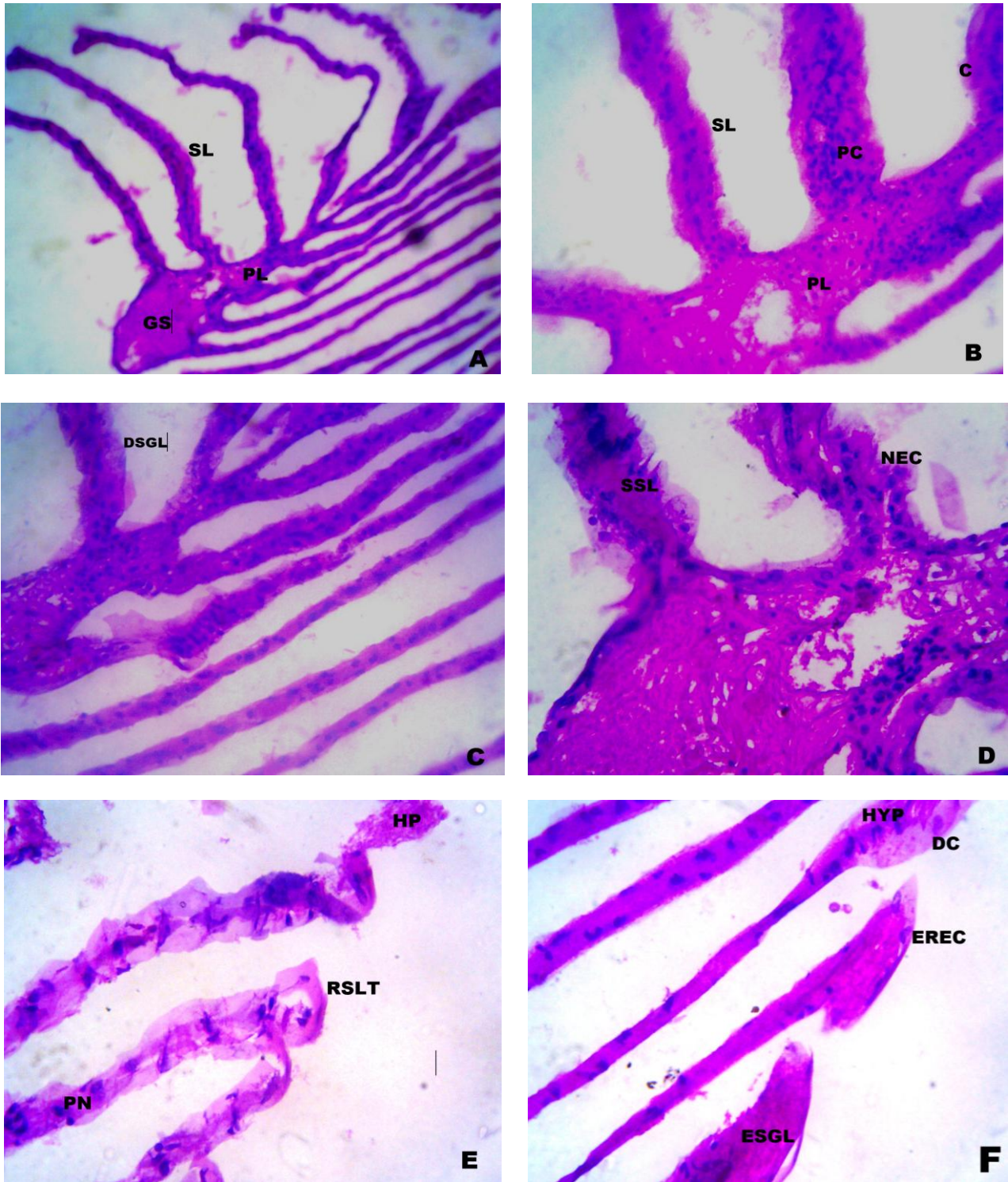


Plate 1. Histological changes of Gills in *P. bidens*. Light microscope of a paraffin section stained with Heamatoxylin and Eosin (40X). A & B Control. C-After 7 days of exposure to 0.038 ppm concentration of Profenofos. D-After 28 days of exposure to 0.076 ppm concentration of Profenofos. E-After 7 days of exposure to 0.038ppm concentration of Profenofos F-After 28 days of exposure to 0.076 ppm concentration of Profenofos (Abbreviations used: PC-Primary lamella, SL-Secondary Lamellae, PC-Pillar cells, GS-Gill stem, C-Cuticle, ESGL-Enlargement of secondary gill lamellae, SSL-Swelling of secondary lamellae, DSGL-Degeneration of epithelium in secondary gill lamellae, NEC-Necrosis, RSLT-Rupture of secondary lamellar tip, DC-Detached cuticle, PN-Pyknotic nuclei,EREC-Edema and Rupture of epithelial cells,,HP-Hyperplasia,HYP-Hypertrophy.

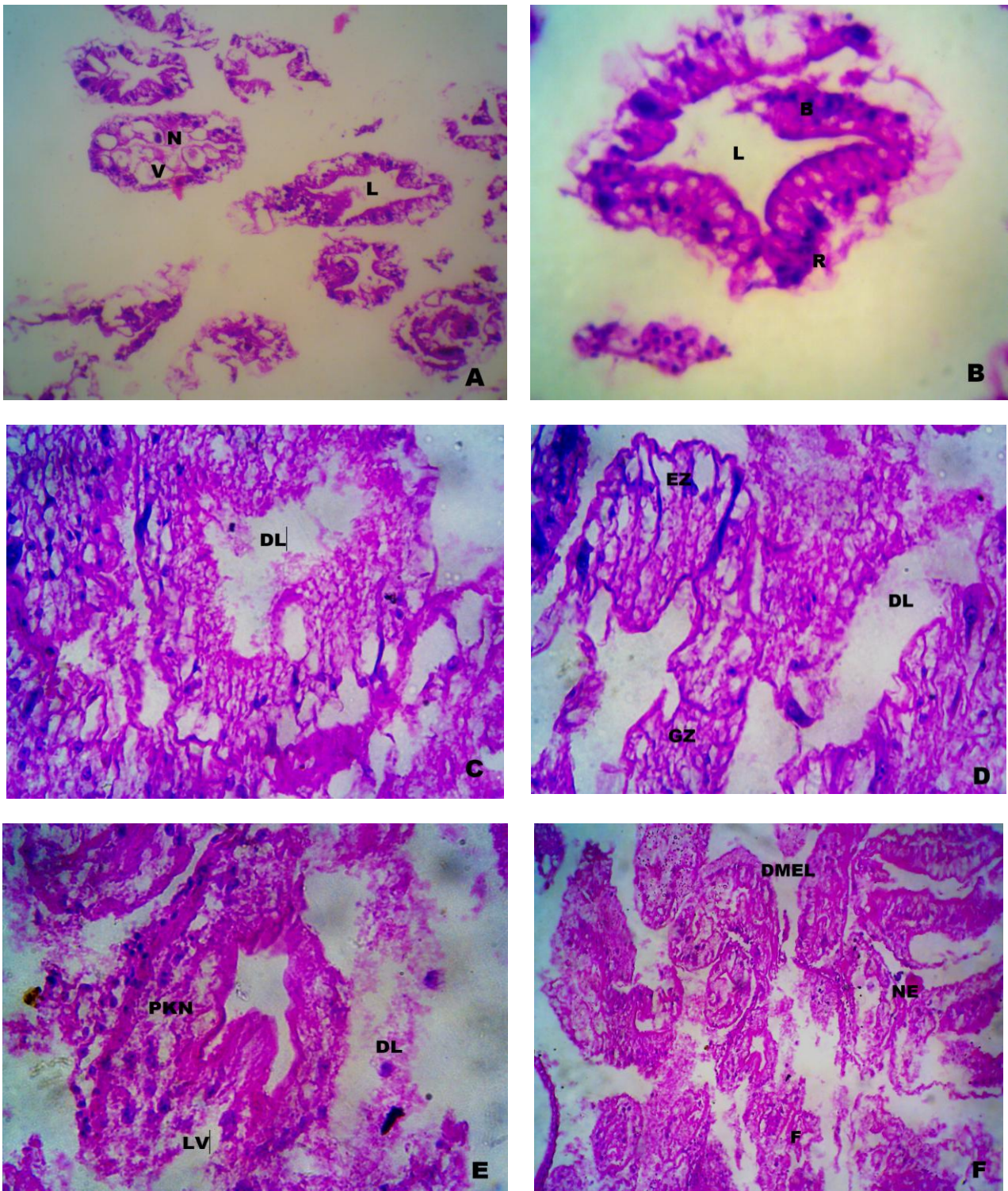


Plate 3. Histological changes of Hepatopancreas in *P. bidens*. Light microscope of a paraffin section stained with Heamatoxylin and Eosin (40X).A & B Control. C-After 7 days of exposure to 0.038 ppm concentration of Profenofos. D- After 28 days of exposure to 0.076 ppm concentration of Profenofos. E-After 7 days of exposure to 0.038ppm concentration of Profenofos. F-After 28 days of exposure to 0.076 ppm concentration of Profenofos (Abbreviations used: B -B cells, F-Fibrillar cells, R-Absorptive cells, EZ- Embryonic zone, GZ -Germinal zone, L-Lumen, DL -Distended lumen, DMEL-Damaged myo epithelial layer, LV-Large vacuole, NE-Necrosis, PKN-Pknotic nucleus.

DISCUSSION

The lifting of the epithelium, oedema, epithelial necrosis, fusion of adjacent secondary lamellae and haemorrhage at primary lamellae were observed in the gills of the crab examined after 28 days of exposure. Epithelial necrosis and rupture of gill epithelium are direct deleterious effect of the irritants. The animal's defense responses are excessive mucus secretion. Lifting of the epithelium, lamellar fusion and club shaped lamellae could be protective in that it diminishes the amount of vulnerable gill surface area (Richmonds and Dutta, 1989).

The histopathological changes of gill can result in hypoxia, respiratory failure problems with ionic and acid-base balance (Alazemi *et al.*, 1996). Similar observations were made by Victor *et al.* (1985) in gill pathology and haemocyte responses in *Macrobrachium idea* exposed to mercuric chloride. Patil and Kaliwal (1989) also observed that the degree of damage to gill tissue increases according to the concentration and period of exposure of zinc in *Macrobrachium hendersonianum*. Changes in the gill surfaces and increased mucus production are consistent with observed histological effects such as hyperplasia, necrosis and lamellar aneurysms in the exposed crab with response to sub lethal concentrations of profenofos.

In the present study, the hepatopancreas showed changes in the F and B cells in low concentration of profenofos, and cells were found clumped, and intercellular spaces invisible in the medium concentration, and a general degeneration, loss of tubules structures, vacuolation, star shape of lumen and necrosis of cells in the high concentrations of profenofos exposed *P. bidens*. The star shape of the lumen was partially lost due to morphological changes of the tubular epithelial cells, because some cells decreased in height from a normal columnar height to a low cuboidal form. In the present study, one of the most evident changes is a proliferation of B-cells in the dosed crabs, indicating a high rate of excretion from the hepatopancreas. The accumulation and elimination of the xenobiotic entering the hepatopancreatic tubules is perhaps effected with a large number of F-cells converting into B-cells.

Profenofos induced structural changes in the hepatopancreas of crabs included, a decrease in the cellular height of the tubular epithelium, a reduction in the abundance of secretory and lipid vacuoles, infiltration of hemocytes, atrophy of epithelial cells, development of pyknotic nuclei, cytolysis and the melanised encapsulation of necrotic tissues. Previous studies on the hepatopancreas at different biological levels such as the structure, development, physiology, metabolism, and biochemistry concluded that this digestive organ possesses several functions, including absorption, digestion, storage, and secretion (Dall and Moriarty, 1983; Caceci *et al.*, 1988). Krishnamoorthy and Subramonian (1996) also reported changes such as elongation of hepatopancreatic cells, and shrunken cells in *Macrobrachium lamarrg* exposed to low (0.0065 ppm), and high (0.0215ppm) concentrations of copper. Destructive and deteriorative changes in the hepatopancreas and gills were observed in *Penaeus indicus*

exposed to Zn at a low concentration of 100 ppb (Viswanathan and Manisseri, 1995). The noted histopathological changes in the hepatopancreas may be due to accumulation of the pesticide since this organ is the centre of storage, metabolism and detoxification.

Abnormal infiltration of hemocytes in the interstitial sinuses noted in the hepatopancreas of test animals suggest that the mechanism of cellular/ host defence was in operation to neutralize the tissue damage caused by profenofos and since hemocytes are the most important form of cellular defence in crustaceans (Bodhipaksha and Weeks-Perkins, 1994). The formation of necrotic hepatopancreatic tubules recorded in test crabs indicates the fact that the distortion, disintegration and death of cells occurred in the hepatopancreas of *P. bidens* exposed to the highest sub-lethal concentration of profenofos. Therefore profenofos toxicity affects the normal integrity and caused tissue damage in the body tissues of *P. bidens*.

ACKNOWLEDGEMENTS

Authors would like to acknowledge their gratitude to Science and Engineering Research Board, Department of Science and Technology, New Delhi, India (SB/YS/LS/254/2013) for the financial assistance and Head of the Institution, Khadir Mohideen College, Adirampattinam for the facilities provided.

REFERENCES

- Alazemi, B.M., Lewis, J.W. and Andrews, E.B., 1996. Gill damage in the freshwater fish *Gnathonemus petersii* (Family: Mormyridae) exposed to selected pollutants: an ultra structural study. *Environ. Technol.*, 17, 225-238.
- APHA, 1985. Standard methods for the examination of water and waste water APHA, AWWA and WPCF, New York.
- Arellano, J.M., Storch, V. and Sarasquete, C., 2004. Ultrastructural and histochemical study on gills and skin of the *Senegal sole, Solea senegalensis*. *J. Appl. Ichthyol.*, 20, 452-460.
- Banni, M., Jebali, J., Daubeze, M., Clerandau, C., Guerbej, H. and Narbonne, J.F., 2005. Monitoring pollution in Tunisian coasts: application of a classification scale based on biochemical markers. *Biomar.*, 10, 105-116.
- Baticados, M.C.L. and Tendencia, E.A., 1991. Effects of gusathion A on the survival and shell quality of juvenile *Penaeus monodon*. *Aquacul.*, 93, 9-19.
- Bela, Z. and Prasad, R., 2008. Impact of pollution on fresh and marine water resources. *J.Poll. Res.*, 273, 461-466.
- Bigi, R., 1996. Efectos del cadmio sobre la fisiología branquial de *Chasmagnahtus granulata* (Decapoda, Brachyura). Graduate Thesis, University of Buenos Aires.

- Bodhipaksha, N. and Weeks-Perkins, B.A., 1994. The effects of methyl parathion on phagocytosis and respiratory burst activity of tiger shrimp (*Penaeus monodon*) phagocytosis. In: J.S. Stolen, T.C. Fletcher (Eds.), Modulators of Fish Immune Responses, Models for Environmental Toxicology Biomarkers Immunostimulators, vol. 1, SOS Publication, Fair Haven, N.J., pp.11-12.
- Caceci, T., Neck, K.F., Lewis, D.H. and Sis, R.F. 1988. Ultrastructure of the hepatopancreas of the pacific white shrimp, *Penaeus vannamei* (Crustacea: Decapoda). *J. Mar. Biol. Assoc. UK.*, 68, 323-337.
- Dall, W. and Moriarty, D.J.W., 1983. Functional aspects of nutrition and digestion. In: Mantel, L.H. (Ed.), The Biology of Crustacea. Internal Anatomy and Physiological Regulation, vol. 5. Academic Press, New York, pp. 215-261.
- Evans, D.H., Piermarini, P.M. and Choe, K.P., 2005. The multifunctional fish gill: dominant site of gas exchange, osmoregulation, acid-base regulation, and excretion of nitrogenous waste. *Physiol. Rev.*, 85, 97-177.
- Gavrilescu, M., 2005. Fate of pesticides in the environment and it's bioremediation. *Eng. Life Sci.*, 5(6), 497-526.
- Ghazala, M., Mahboob, S., Al-Ghanim, K.A., Sultana, S., Alkahem Al-Balawi, Sultana, T., Al-Misned, F. and Ahmed, Z., 2014. Acute toxicity II: Effect of organophosphates and carbamates to *Catla catla*. *J. Anim. Plant Sci.*, 24, 1795-1801.
- Hart, K. and Pimentel, D., 2002. Public health and costs of pesticides. In: Encyclopedia of pest management (ed. D. Pimentel). Marcel Dekker, New York, pp. 677-679.
- Humason, G.L., 1972. Animal tissue Techniques, 3rd Ed., W.H. Freeman and Company, San Francisco.
- Johnston, D.J., Alexander, C.G. and Yellowhees, D., 1998. Epithelial cytology and function in the digestive gland of *Thenus orientalis* (Decapoda, Scyllaridae). *J. Crust. Biol.*, 18, 271-278.
- Krishnamoorthy, P. and Subramanian, P., 1996. Effect of sub lethal doses of copper on the hepatopancreas of the freshwater prawn, *Macrobrachium lamarrei lamarrei* *Geobio.*, 23(1), 16-18.
- Kumar, S. and Tembhre, M., 2010. Fish and Fisheries. New Central agencies (P) Ltd, London.
- Lundbaye, A.K., Curtis, T.M., Braven, J. and Depledge, M.H., 1997. Effects of the organophosphorous pesticide, dimethoate, on cardiac and acetylcholinesterase (AChE) activity in the shore crab *Carcinus maenas*. *Aquat. Toxicol.*, 40, 23-36.
- Maharajan, A., Narayanasamy, Y., Ganapiriya, V. and Shanmugavel, K., 2015. Histological alterations of a combination of Chlorpyrifos and Cypermethrin (Nurocombi) insecticide in the fresh water crab, *Paratelphusa jacquemontii* (Rathbun). *J. Basic Appl. Zool.*, 72, 104-112.
- Maharajan, A., Neelakandamoorthy, N. and Kumarasamy, P. 2012a. Impact of Profenofos on oxygen consumption and gill histopathology of the Fresh water crab, *Paratelphusa jacquemontii* (Rathbun). *Res. Rev. J. Toxicol.*, 2(2), 46-55.
- Maharajan, A., Rajalakshmi, S., Vijayakumaran, M. and Kumarasamy, P. 2012b. Sublethal effect of copper toxicity against histopathological changes in the spiny lobster, *Panulirus homarus* (Linnaeus, 1758). *Biol. Trace Elem. Res.*, 145, 201-210.
- Maharajan, A., Usha, R., Paruruckmani, P.S., Vijaykumar, B.S., Ganapiriya, V. and Kumarasamy, P. 2013. Sublethal effect of profenofos on oxygen consumption and gill histopathology of the Indian major carp, *Catla catla* (hamilton) *Int. J. Pure Appl. Zool.*, 1(1), 196-204.
- Mahboob, S., Ghazala, Sultana, S., Al-Akel, A.S., Humood, F.A.B., Al-Misned, F. and Zubair, M., 2011. Pesticide residues in flesh of *Cirrhinus mrigala* collected from a commercial farm and river Chenab at Trimu Head, Jhang. *Paki. J. Zool.*, 43, 97-101.
- Oliveira Ribeiro, C.A., Vollaie, Y., Sanchez-Chardi, A. and Roche, H., 2005. Bioaccumulation and the effects of organochlorine pesticides, PAH and heavy metals in the eel (*Anguilla anguilla*) at the Camargue Nature Reserve, France. *Aquat. Toxicol.*, 74, 53-69.
- Patil, H.S. and Kaliwal, M.B., 1989. Histopathological effects of zinc on the gills of prawn *Macrobrachium hendersodanum*. *Z. Angew. Zool.*, 761:505-510.
- Randi, A.S., Monserrat, J.M., Rodríguez, E.M. and Romano, L.A., 1996. Histopathological effects of cadmium on the gills of the freshwater fish, *Macropsobrycon uruguayanae Eigenmann* (Pisces, Atherinidae). *J. Fish. Dis.*, 19, 311-322.
- Richmonds, C. and Dutta, H.M., 1989. Histopathological changes induced by malathion in the gills of the bluegill *Lepomis macrochirus*. *Bull. Environ. Contam. Toxicol.*, 43, 123-130.
- Schwaiger, J., Wanke, R., Adam, S., Pawert, M., Honnen, W. and Triebkorn, R., 1997. The use of histopathological indicators to evaluated contaminant-related stress in fish. *J. Aquat. Ecosyst. Stress Recov.*, 6, 75-86.
- Sousa, L.G. and Petriella, A.M., 2001. Changes in the hepatopancreas histology of *Palaemonetes argentinus* (Crustacea: Caridea) during moult. *Biocel.*, 25, 275-281.
- Teh, S.T., Adams, S.M. and Hinton, D.E., 1997. Histopathologic biomarkers in feral freshwater fish populations exposed to different types of contaminant stress. *Aquat. Toxicol.*, 37, 51-70.
- Thakur, I.S., 2006. Industrial biotechnology: Problems and remedies, IK international, New Delhi, pp.180-186.

- Tungare, S.M. and Sawant, A.D., 2000. Physiological effects of heavy metals on prawns. International conference on Probing in biological system in Mumbai Feb. 2000 pp. 139.
- Victor, B., Mahalingam, S. and Sarojini, R., 1985. Cytopathological effects of cadmium on the freshwater prawn *Macrobrachium idea*. *Ind. J. Fish.*, 32(4), 478-80.
- Vigliano, F.A., Aleman, N., Quiroga, M.I. and Nieto, J.M., 2006. Ultrastructural Characterization of Gills in Juveniles of the *Argentinian Silverside*, *Odontesthes bonariensis* (Valenciennes, 1835) (Teleostei: Atheriniformes). *Anat. Histol. Embryol.*, 35, 76-83.
- Vioque-fernandez, A., Alves de Almeida, E., Ballesteros, J., Garcia-Barrera, T., Gomez-Ariza, J. L. and Lopez-Barea, J., 2007. Donana National Park survey using crayfish (*Procambarus clarkii*) as bioindicator: esterase inhibition and pollutant levels. *Toxicol. Lett.* 168, 260-268.
- Viswanathan, S. and Manisseri, M.K., 1995. Histopathological studies on Zinc toxicity in *Penaeus indicus* H. Milne Edwards. Mariculture Research under the postgraduate programme in Mariculture Part-6. Rengarajan, K. (eds.), Cochin India, CMFRI No. 61, 25-29.
- Wanee, J., Upatham, E., Maleeya, K., Somphong, S., Grams, S. and Prayad, P., 2002. Histopathological effects of Roundup, a Glyphosate herbicide on Nile tilapia (*Oreochromis niloticus*), *Sci. Asia*, 28, 121-127.
- Zeeman, M.G. and Brindley, W.A. 1981. Effects of toxic agents upon fish immune systems: a review. In: Immunologic Considerations in Toxicology. (R. P. Sharma, ed.). Boca Raton, FL: CRC Press/Lewis Publisher. pp. 1-60.