



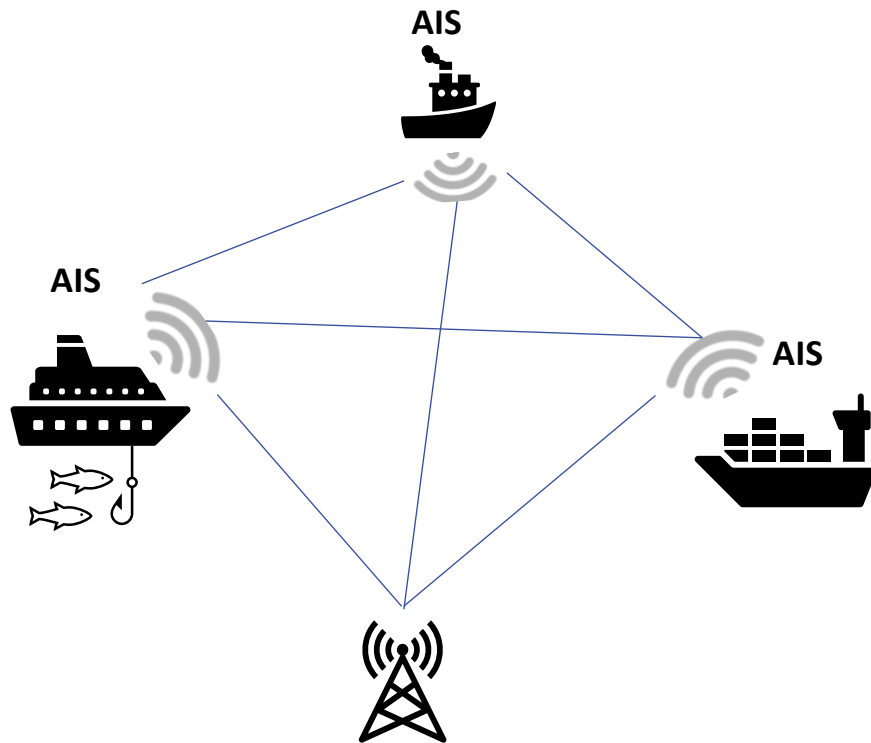
AI in marine sciences:

Classifying vessels using CNNs based on underwater acoustics

Decrop Wout, Parcerisas Clea, Schall Elena, Debusschere Elisabeth, Deneudt Klaas

Automatic Identification System (AIS)

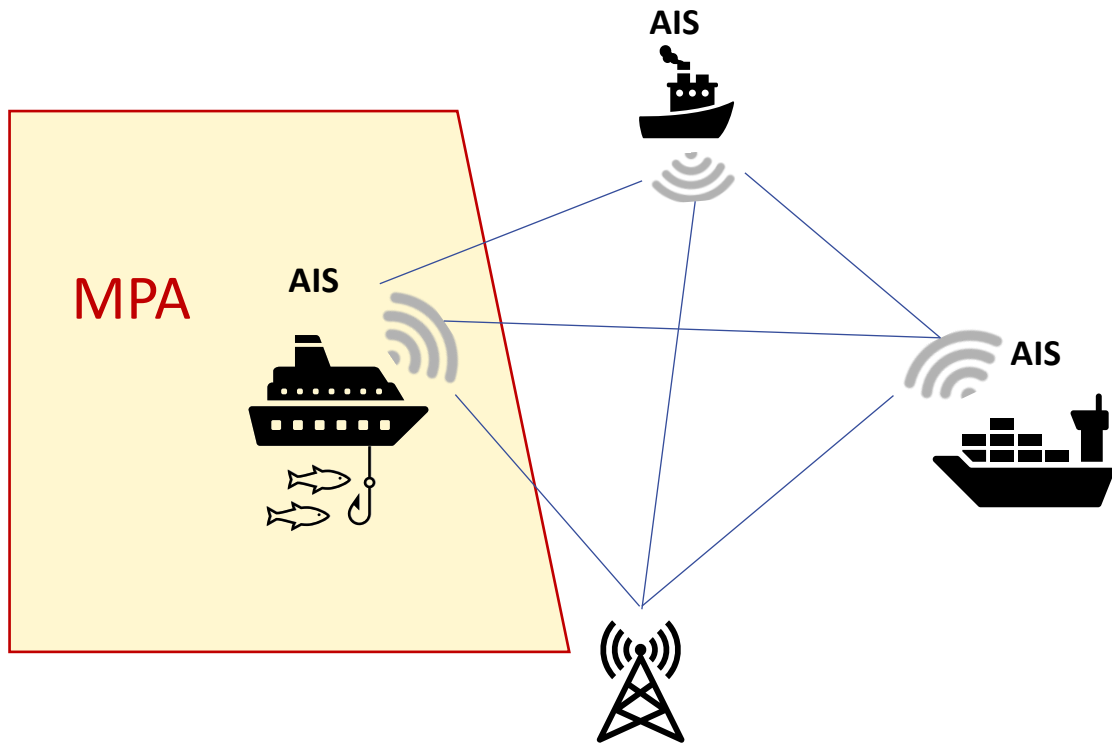
Monitoring MPA's



Long	Lat	Time	Ship_type	Activity
2.1912	51.3837	04/02/22	Cargo	underway
2.4912	51.6529	04/02/22	Recreation	Anchored
2.2107	51.6264	04/02/22	Cargo	Moored

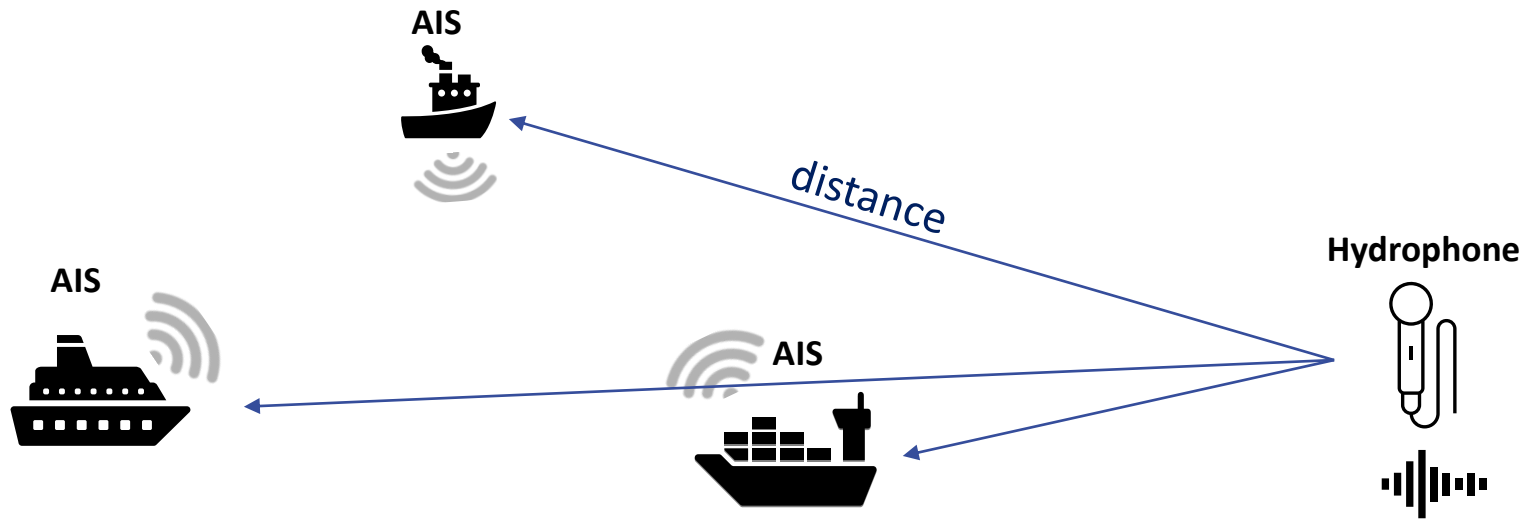
Automatic Identification System (AIS)

Monitoring MPA's



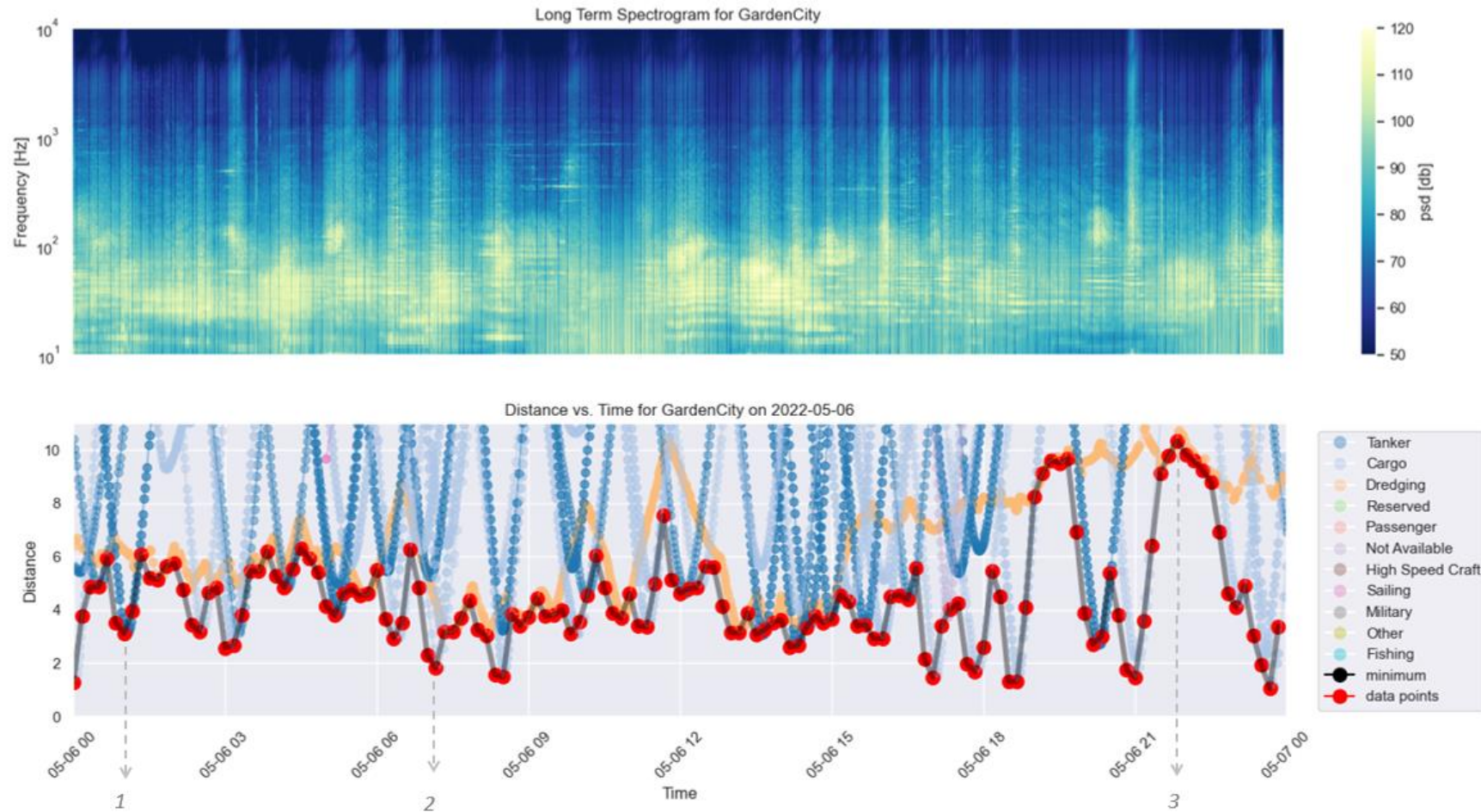
Long	Lat	Time	Ship_type	Activity
2.1912	51.3837	04/02/22	Cargo	underway
2.4912	51.6529	04/02/22	Recreation	Anchored
2.2107	51.6264	04/02/22	Cargo	Moored

Creating the database



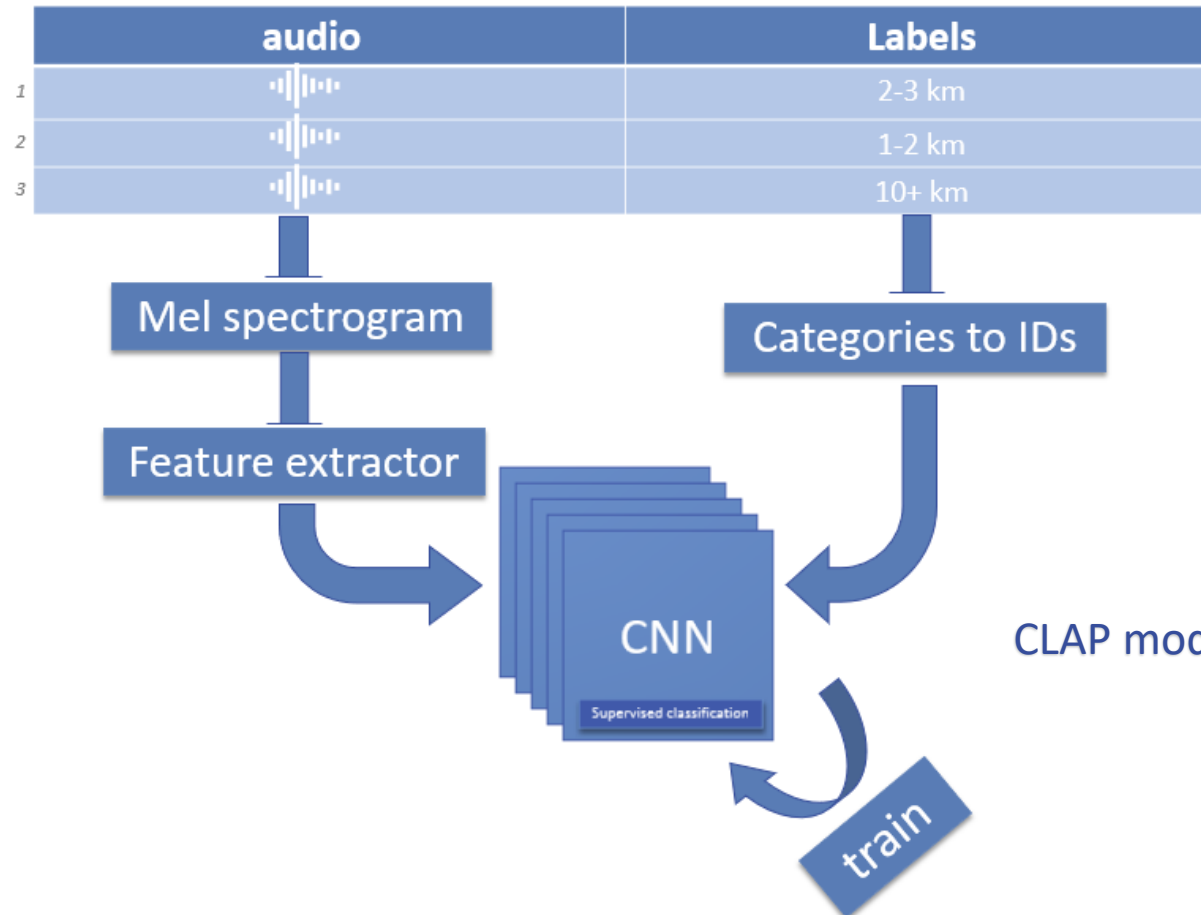
The power spectral density is in function of the distance

Checking the data



Model architecture

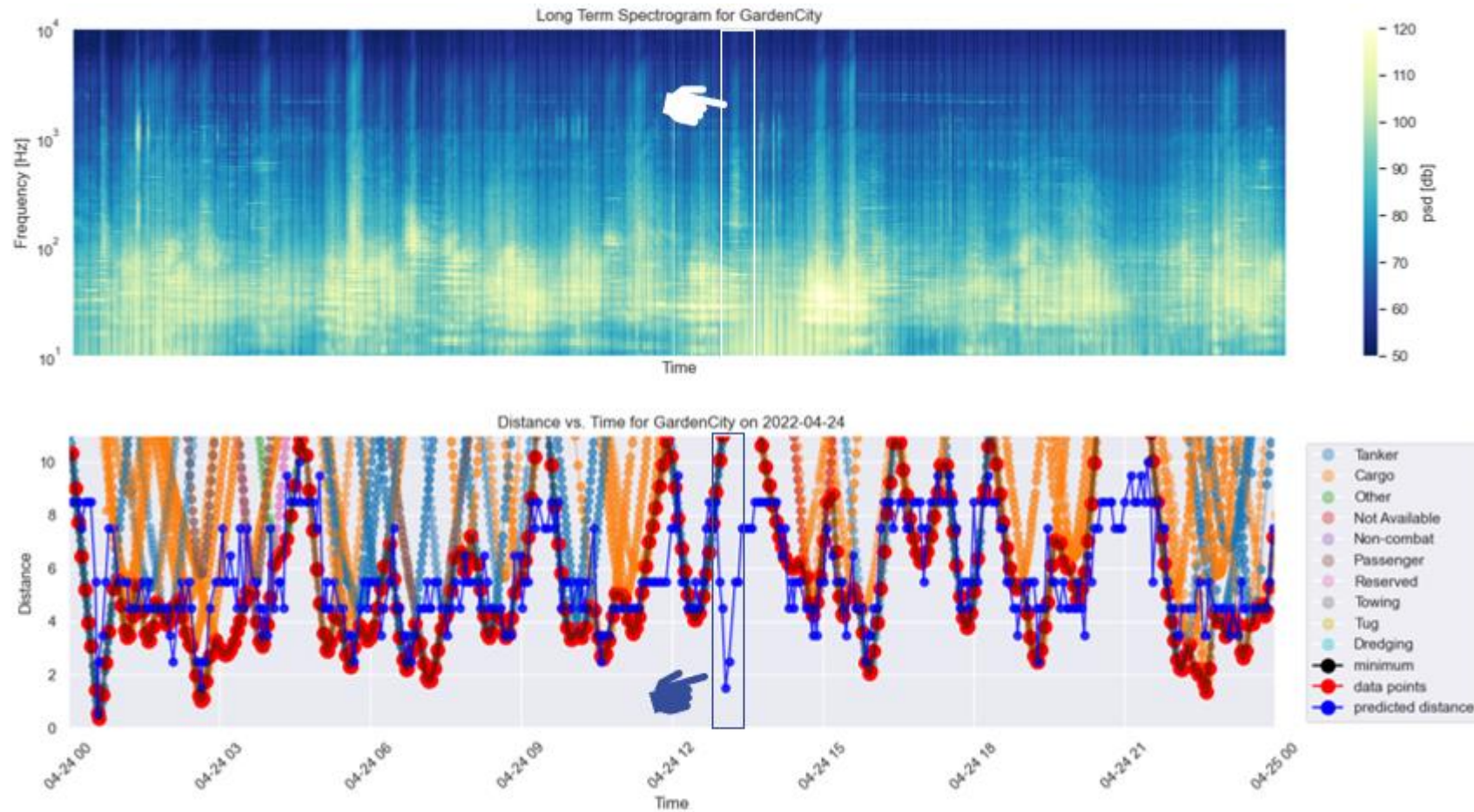
Creating the model



CLAP model pre-trained on bioacoustics.

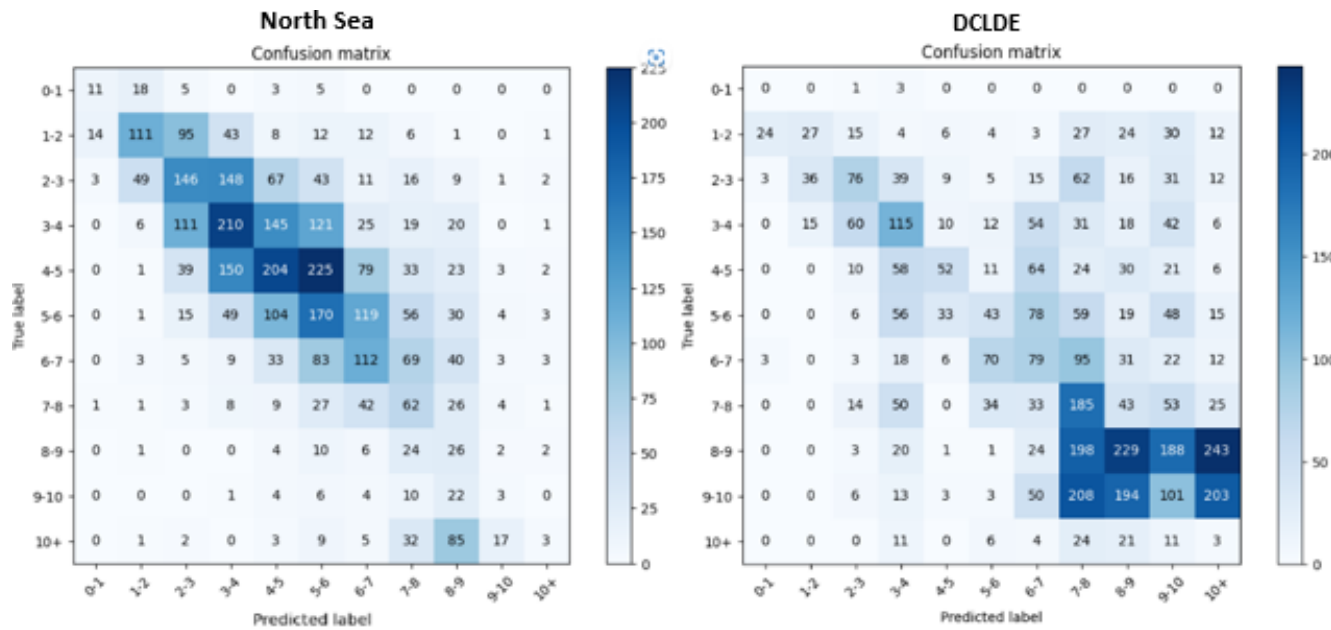
Predictions plotted on database

Results North Sea



Model is able to identify false negatives from dataset.

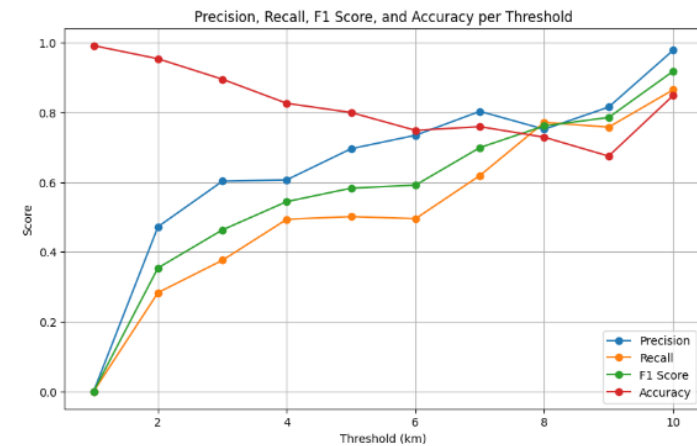
Results North Sea vs DCLDE



	North Sea	DCLDE
MSE	3.46 km	6.1 km
RMSE	1.86 km	2.47 km

Model re-trained on 2.8k DCLDE data-points from vessel track.

Slightly overestimates the distance but still able to classify/detect





The team:

Wout Decrop

Clea Parcerisas

Elena Schall

Elisabeth Debusschere

Klaas Deneudt

The MOC and acoustics team

ChatGPT

Thank you

wout.decrop@vliz.be