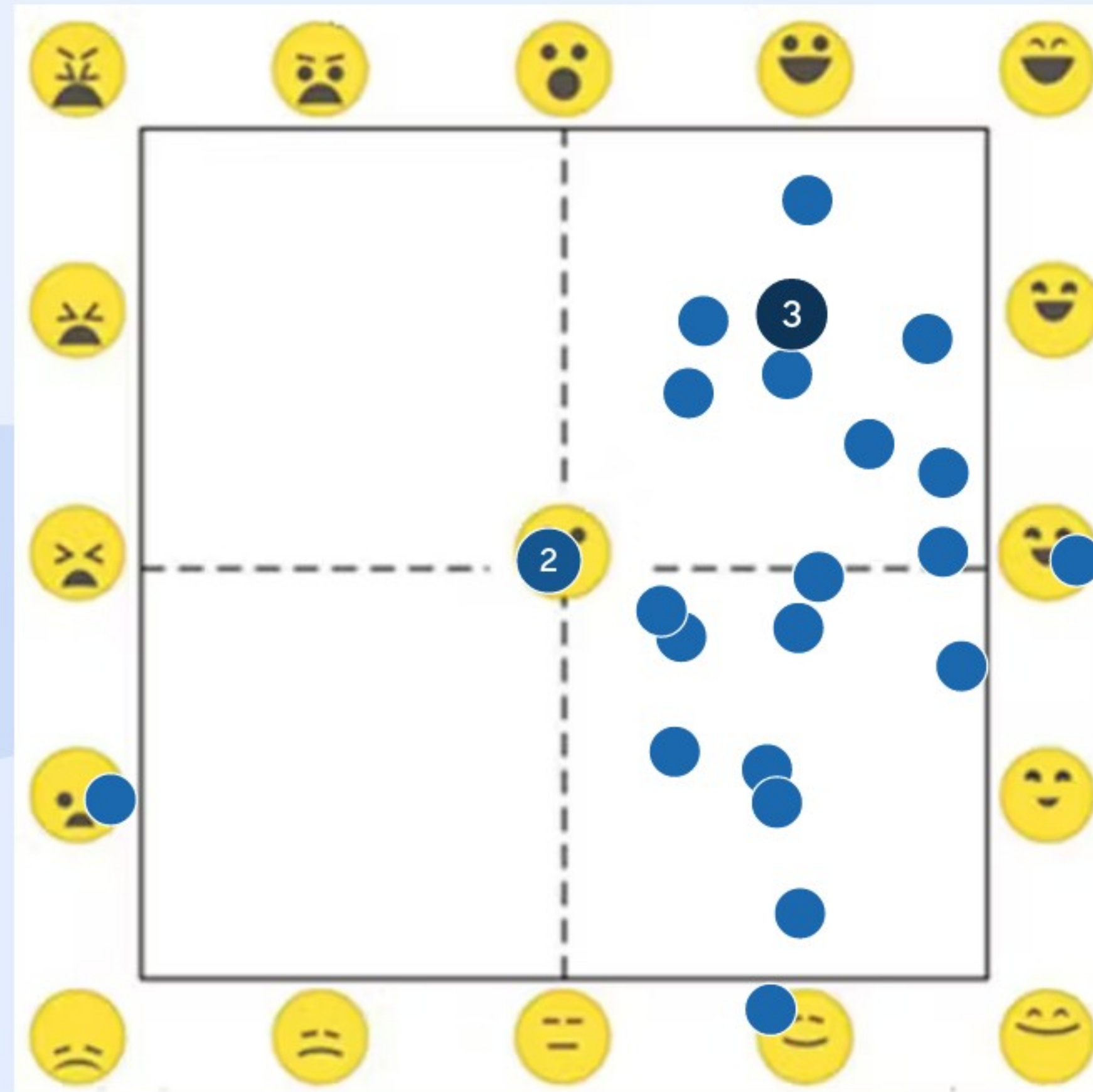


Checking in: How are you feeling?



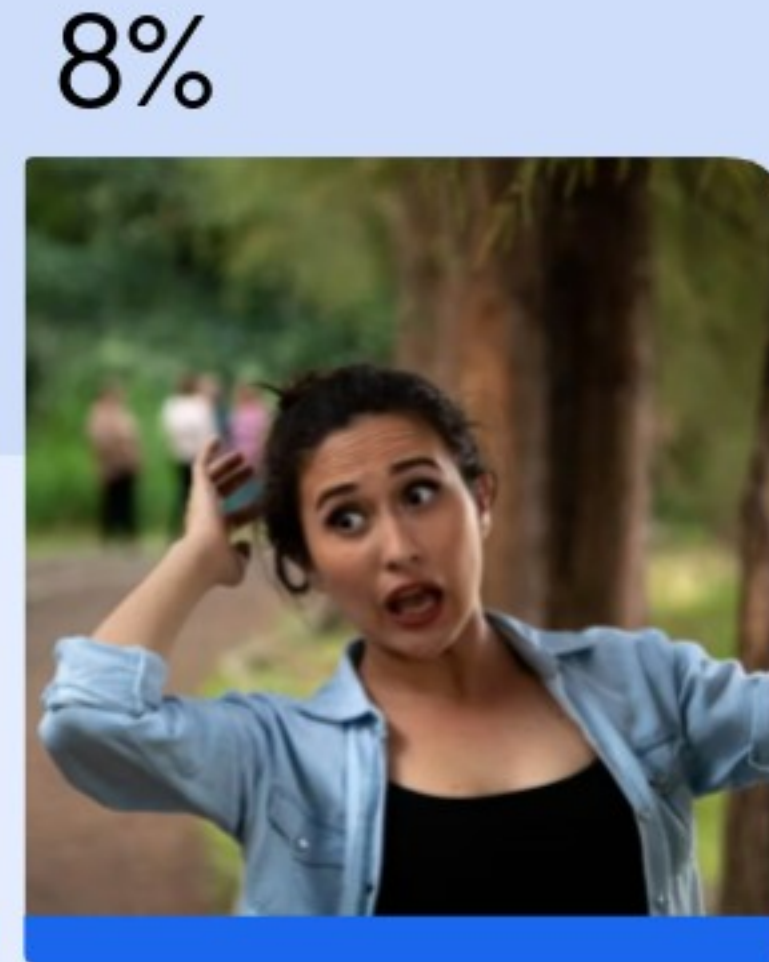
Do you have an Earthdata Login and is the username/password accessible?



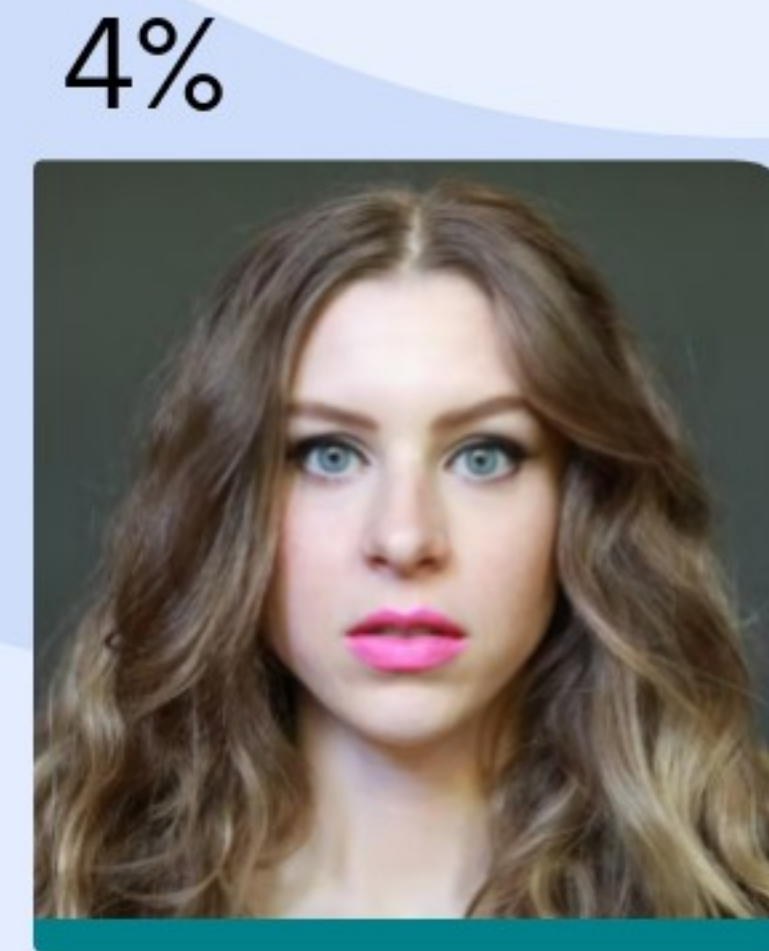
Yes and I have it!



I have one but don't have it or don't recall what the username/pswd is.

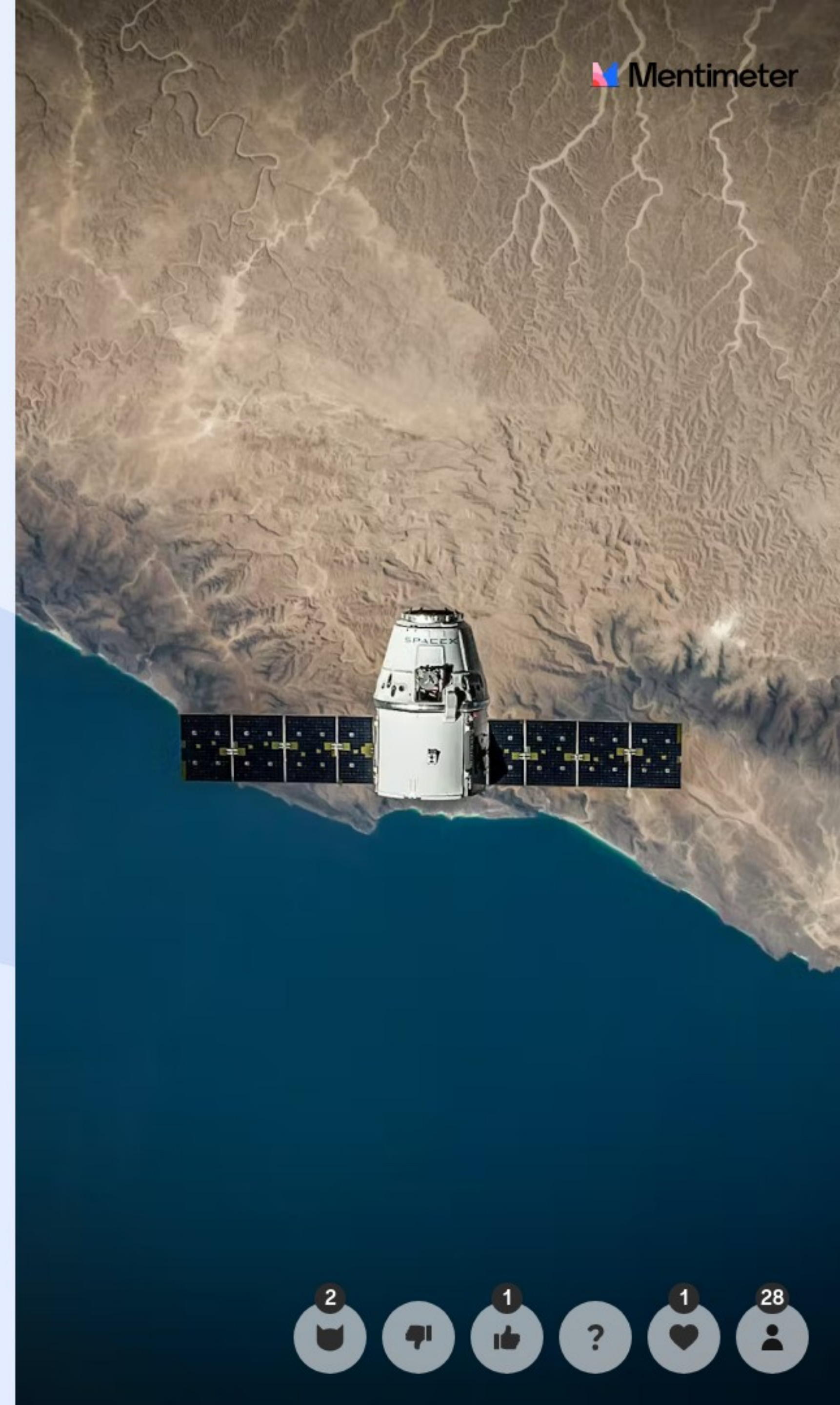
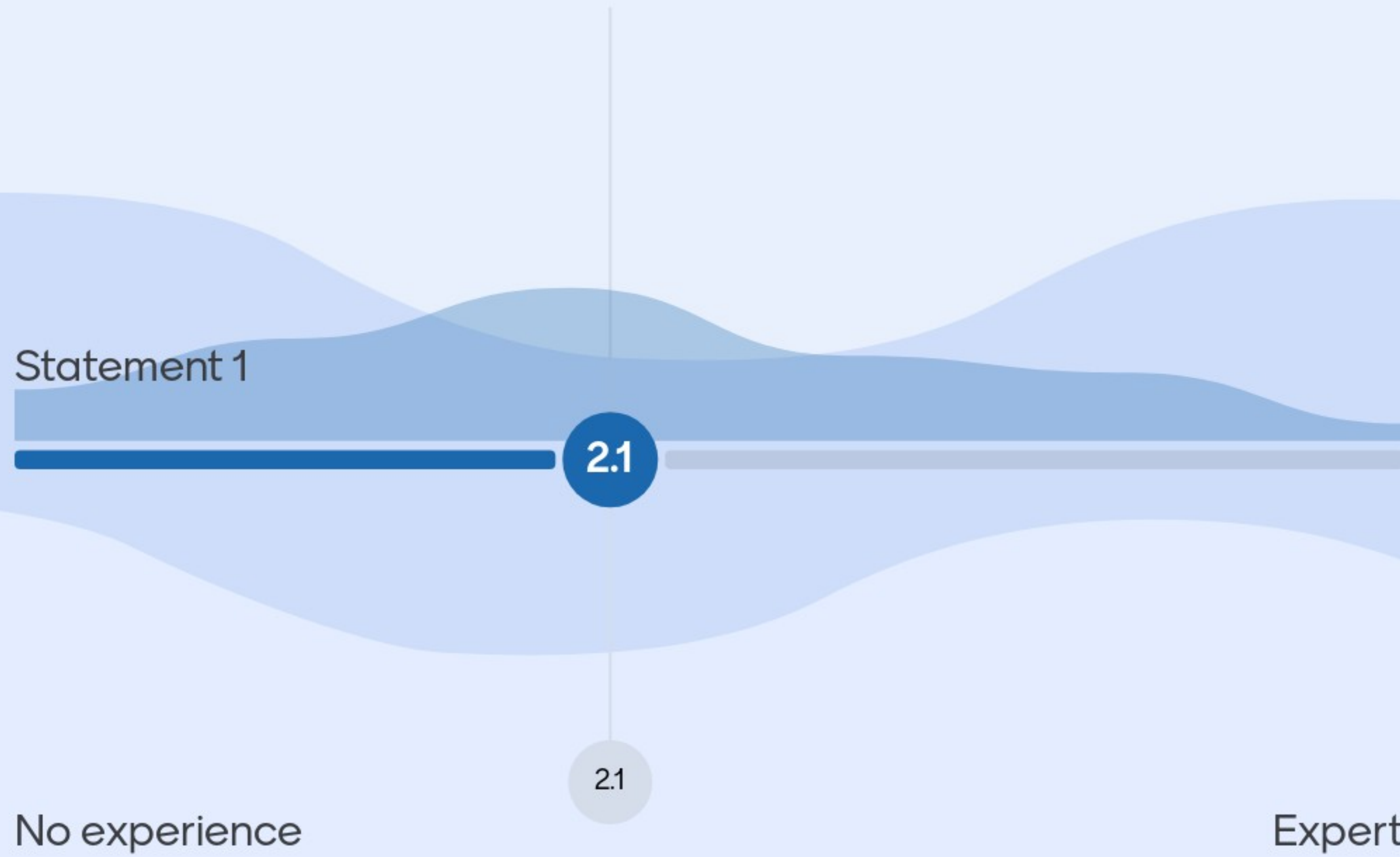


Doh, I meant to sign up.

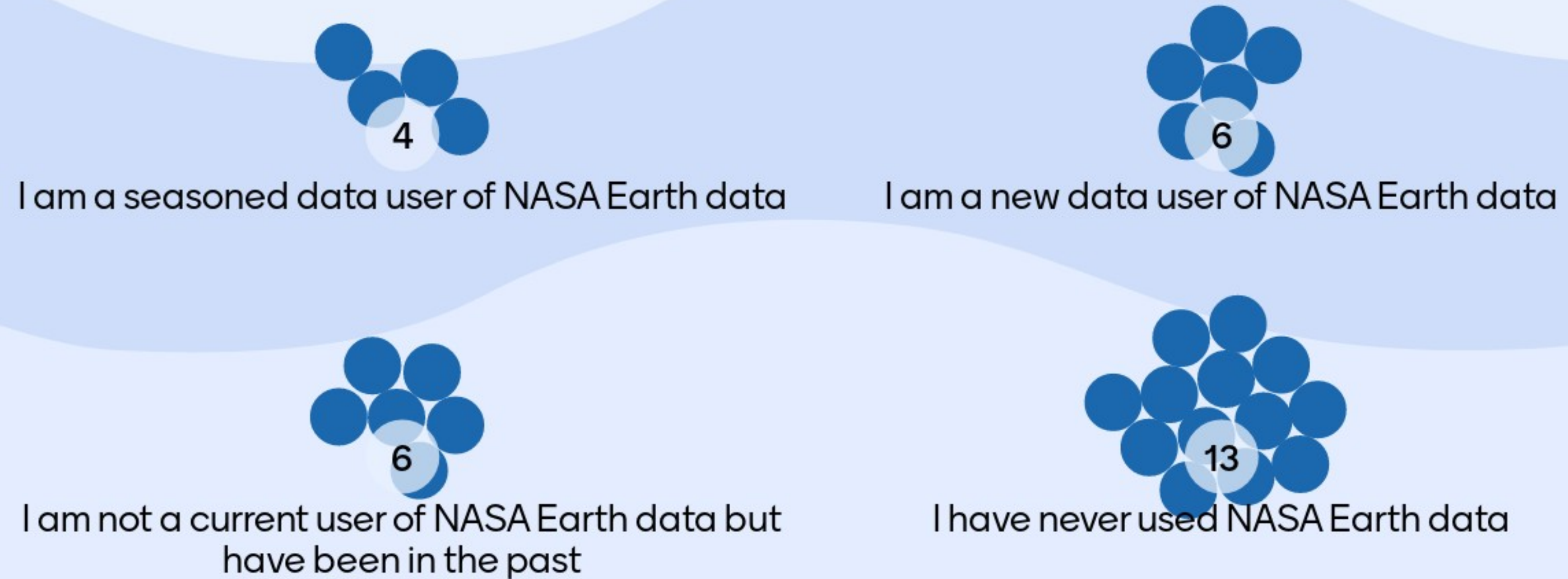


Wait, what?

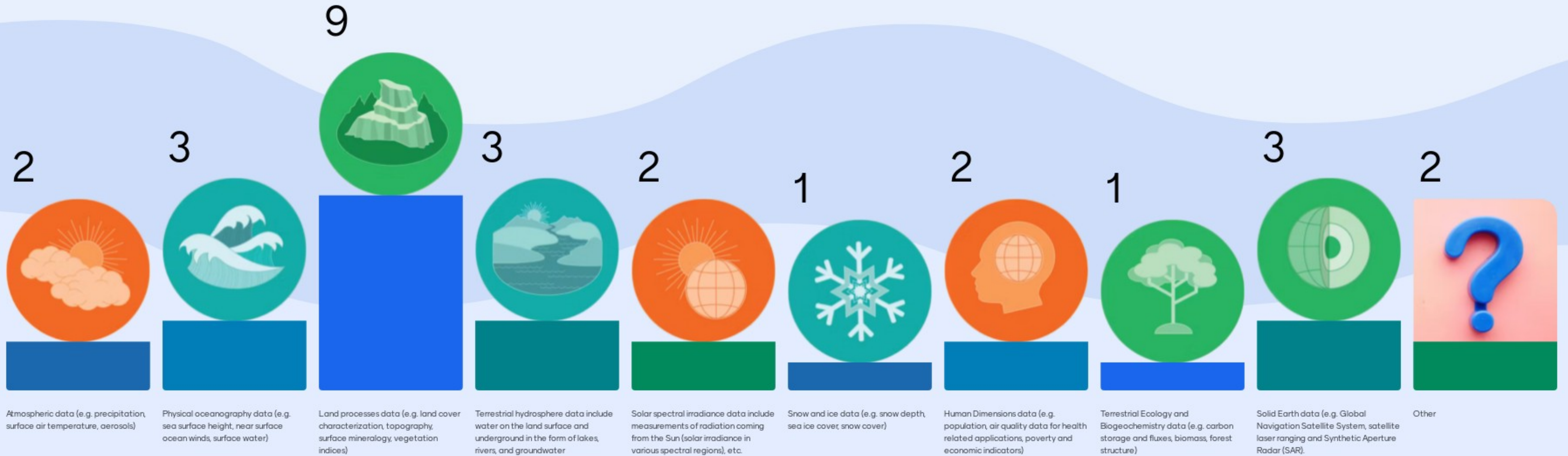
On a scale of 0-5, how familiar are you with remote sensing data, in general (0-novice, 5-expert)



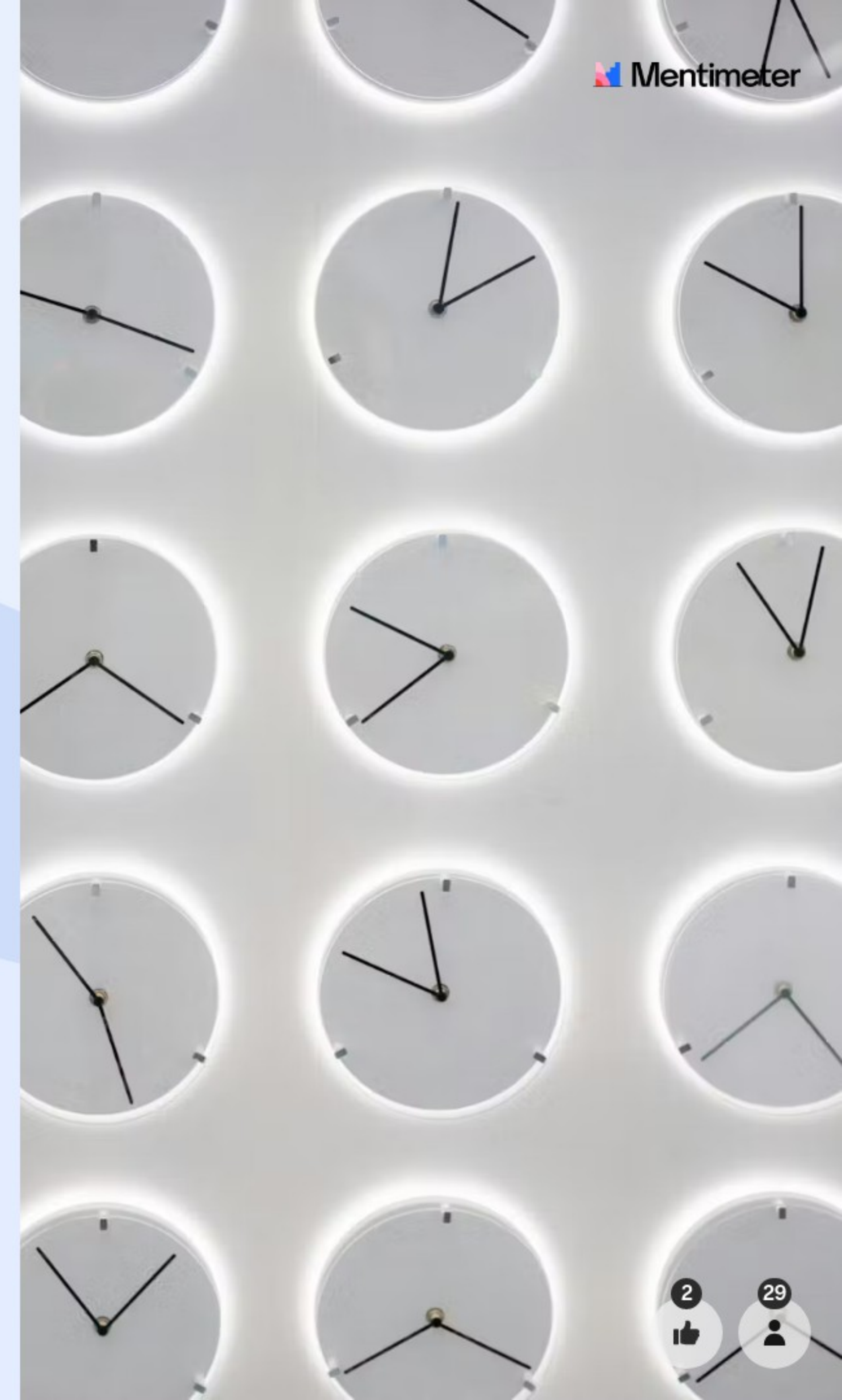
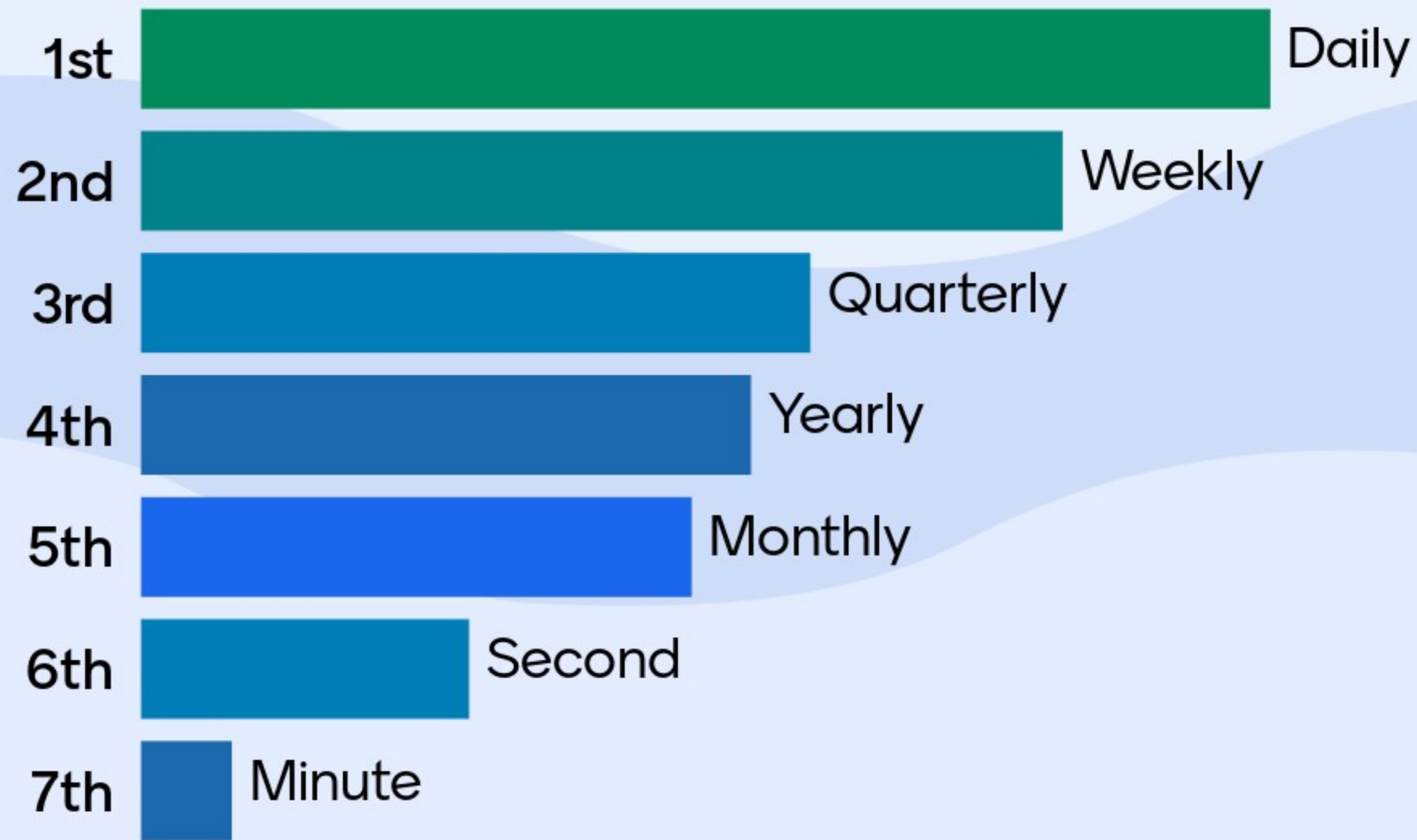
How would you describe your level of expertise using NASA Earth observation data?



What would like to measure/monitor most on Earth?



How often would like to measure/monitor this variable?



Have you used Landsat data in the past?





What are some inferences why the near infrared regions appear to spread between Landsat overpasses?

0



Overwatering

0



Underwatering

0



Disease

0



Pestilence

0



Harmful chemical contamination

0

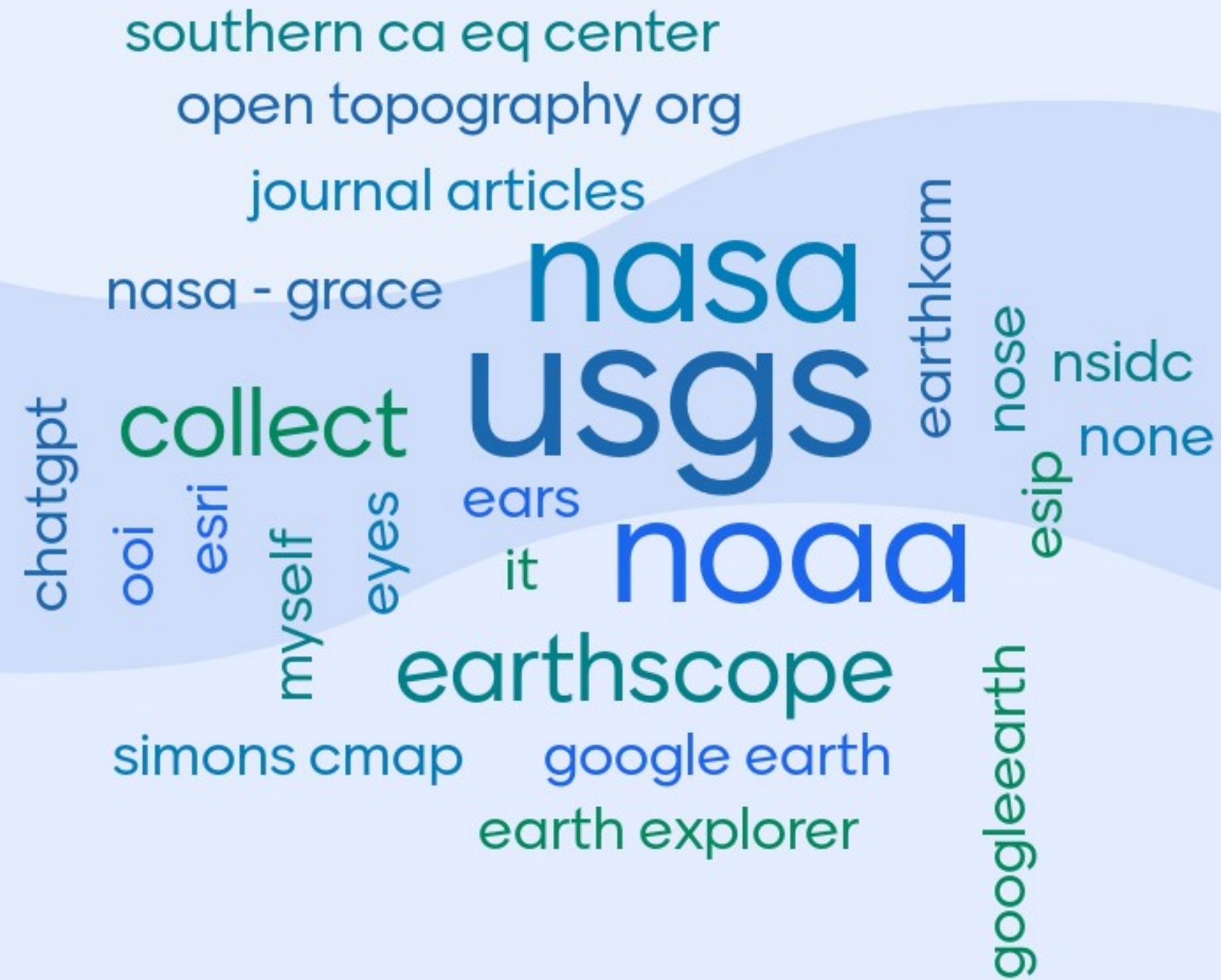


Other



Where do you get the data you use?

46 responses



WHAT TYPE OF DATA USER DO YOU MOST IDENTIFY WITH?

Pin on Image

Different kinds of data users...

