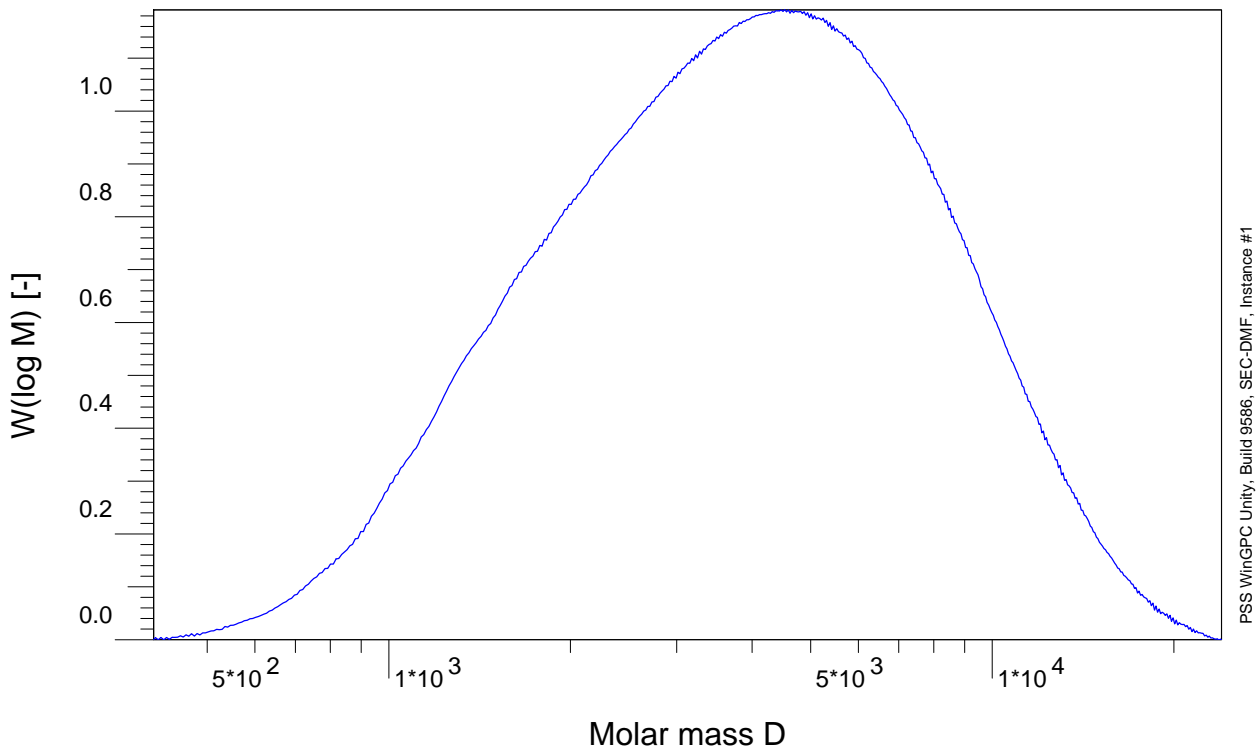


Sample : aPC1
Integration from: Sunday 93-09-05 11:11:01 4.123 ml
Integration to : Sunday 93-09-05 11:21:52 6.293 ml
Calibration File : PMMA_Cal_220705.CAL
MHK - A (Cal.): 0.000E+0
Int.stand.-cal.: 6.447 ml
Pump : Tosoh EcoSEC
Concentration : 3.000 g/l
Column 1 : PSS PFG 5µm MicroGuard
Column 2 : PSS PFG 5µm 100Å
Column 3 : PSS PFG 5µm Micro 300Å
Detector 1 : Tosoh EcoSEC RI
Detector 2 : System pressure
Operator : user

Eluent : DMF 0.01M LiCl
MHK - K (Cal.): 1.000E+0 ml/g
Int.stand.-sam.: ----- ml
Flowrate : 0.200 ml/min
Inject volume : 20.000 µl
Temperature : 50.000 °C
Temperature : 50.000 °C
Temperature : 50.000 °C
Delay volume : 0.000 ml
Delay volume : 0.000 ml
Acquisition interval 1.000 sec

<u>Tosoh EcoSEC RI</u>		
	Uncert.[%]	
Mn :	3.7910e3	3.63 g/mol
Mw :	7.2893e3	3.63 g/mol
Mz :	1.1550e4	3.63 g/mol
Mv :	0.000000	3.63 g/mol
D :	1.9228e0	5.13
[n]:	0.000000	0.00 ml/g
Vp :	5.1552e0	3.58 ml
Mp :	6.4173e3	3.63 g/mol
A :	1.455e-1	3.58 ml*V
< 332	0.00	3.58
w% :	100.00	3.58
> 42177	0.00	3.58



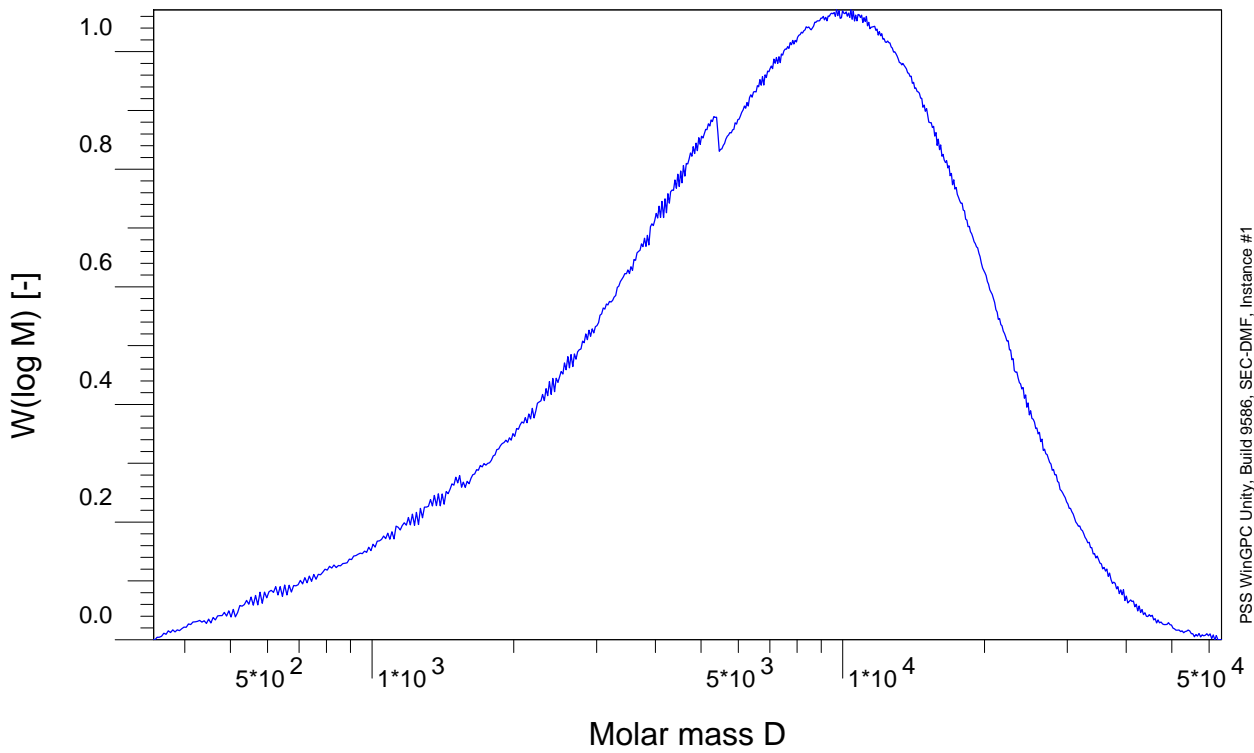
PSS WinGPC Unity, Build 9586, SEC-DMF, Instance #1

Sample : aPC2
Integration from: Sunday 93-09-05 12:00:02
Integration to : Sunday 93-09-05 12:09:08
Calibration File : PMMA_Cal_220705.CAL
MHK - A (Cal.): 0.000E+0
Int.stand.-cal.: 6.447 ml
Pump : Tosoh EcoSEC
Concentration : 3.000 g/l
Column 1 : PSS PFG 5µm MicroGuard
Column 2 : PSS PFG 5µm 100Å
Column 3 : PSS PFG 5µm Micro 300Å
Detector 1 : Tosoh EcoSEC RI
Detector 2 : System pressure
Operator : user

Eluent : DMF 0.01M LiCl
MHK - K (Cal.): 1.000E+0 ml/g
Int.stand.-sam.: ----- ml
Flowrate : 0.200 ml/min
Inject volume : 20.000 µl
Temperature : 50.000 °C
Temperature : 50.000 °C
Temperature : 50.000 °C
Delay volume : 0.000 ml
Delay volume : 0.000 ml
Acquisition interval 1.000 sec

Tosoh EcoSEC RI

		Uncert.[%]	
Mn :	2.9158e3	3.01	g/mol
Mw :	4.7846e3	3.01	g/mol
Mz :	7.1246e3	3.01	g/mol
Mv :	0.000000	3.01	g/mol
D :	1.6409e0	4.25	
[n]:	0.000000	0.00	ml/g
Vp :	5.4171e0	2.93	ml
Mp :	3.8097e3	3.01	g/mol
A :	1.101e-1	2.93	ml*V
< 407	0.00	2.93	
w% :	100.00	2.93	
> 23984	0.00	2.93	

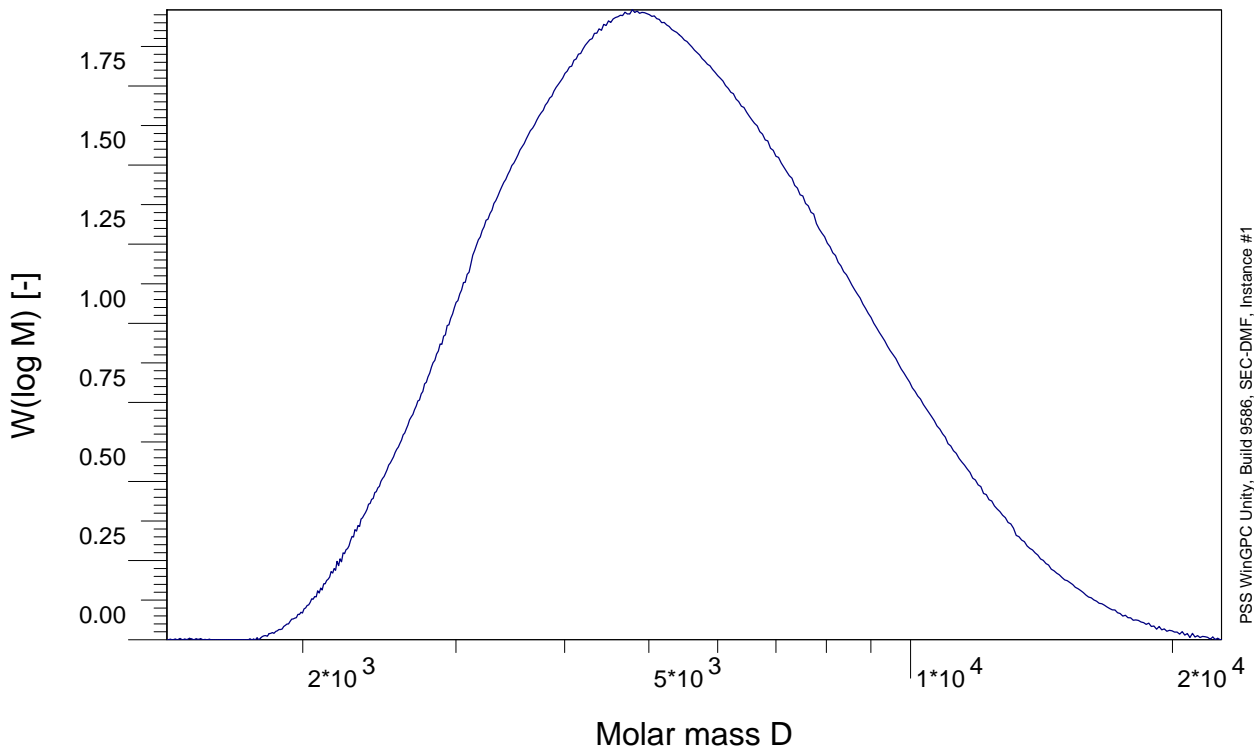


Sample : aPC3
Integration from: Tuesday 93-08-10 11:57:27
Integration to : Tuesday 93-08-10 12:09:02
Calibration File : PMMA_Cal_220509.CAL
MHK - A (Cal.): 0.000E+0
Int.stand.-cal.: 6.430 ml
Pump : Tosoh EcoSEC
Concentration : 3.000 g/l
Column 1 : PSS PFG 5µm MicroGuard
Column 2 : PSS PFG 5µm 100Å
Column 3 : PSS PFG 5µm Micro 300Å
Detector 1 : Tosoh EcoSEC RI
Detector 2 : System pressure
Operator : user

Eluent : DMF 0.01M LiCl
MHK - K (Cal.): 1.000E+0 ml/g
Int.stand.-sam.: ----- ml
Flowrate : 0.200 ml/min
Inject volume : 20.000 µl
Temperature : 50.000 °C
Temperature : 50.000 °C
Temperature : 50.000 °C
Delay volume : 0.000 ml
Delay volume : 0.000 ml
Acquisition interval 1.000 sec

Tosoh EcoSEC RI

		Uncert.[%]	
Mn :	4.2117e3	10.21	g/mol
Mw :	9.5030e3	10.20	g/mol
Mz :	1.5730e4	10.20	g/mol
Mv :	0.000000	10.21	g/mol
D :	2.2563e0	14.43	
[n]:	0.000000	0.00	ml/g
Vp :	4.9224e0	10.15	ml
Mp :	9.7028e3	10.21	g/mol
A :	8.869e-2	10.15	ml*V
< 343	0.00	10.15	
w% :	100.00	10.15	
> 63778	0.00	10.15	



Sample :	aPCL		
Integration from:	Saturday 93-09-18 20:43:01	4.193 ml	
Integration to :	Saturday 93-09-18 20:50:55	5.773 ml	
Calibration File :	PEG_cal_20230630.CAL		
MHK - A (Cal.):	0.000E+0	Eluent :	DMF 0.01M LiBr
Int.stand.-cal.:	6.426 ml	MHK - K (Cal.):	1.000E+0 ml/g
Pump :	n.a.	Int.stand.-sam.:	----- ml
Concentration :	3.000 g/l	Flowrate :	0.200 ml/min
Column 1 :	n.a.	Inject volume :	20.000 ul
Detector 1 :	Tosoh EcoSEC RI	Temperature :	50.000 °C
Detector 2 :	System pressure	Delay volume :	0.000 ml
Operator :	user	Delay volume :	0.000 ml
		Acquisition interval	1.000 sec

Tosoh EcoSEC RI

Mn :	4.8833e3	g/mol
Mw :	5.9467e3	g/mol
Mz :	7.3274e3	g/mol
Mv :	0.000000	g/mol
D :	1.2178e0	
[n]:	0.000000	ml/g
Vp :	4.9048e0	ml
Mp :	5.0725e3	g/mol
A :	9.8168e0	ml*V
< 1395	0.00	
w% :	100.00	
> 22778	0.00	