

World Data System Webinar Series 2024

Joint Statement on Research Data

20 June 2024
13:00 UTC/9:00 AM EST



DOI: [10.5281/zenodo.12570909](https://doi.org/10.5281/zenodo.12570909)



Explore the Path to Proper Participation: **Visit Our Etiquette Page!**

- Go to worlddatasystem.org/virtual-meeting-etiquette or scan the QR code
- We welcome your questions in the Q&A section
- Please note that this webinar will be recorded



WDS Virtual Meeting Etiquette

Speakers



Helena Cousijn



Martyn Rittman



World Data System

wds-ipo@utk.edu



Hylke Koers



worlddatasystem.org



Reyna Jenkyns



Agenda

5 min Welcome and speaker introductions (Meredith Goins, WDS-IPO)

25 min Hylke Koers, STM - Introduction on what is the [Joint Statement on Research Data](#) and History of Joint Statement on Research Data

- Crossref perspective by Martyn Rittman
- DataCite perspective by Helena Cousijn

Examples from stakeholder types (researchers, data repositories, publishers, funders, research organizations, policymaking institutions)

10 min Why WDS signed on (Reyna Jenkyns, WDS-ITO)

5 min Call to action to attendees to sign on

15 min Q&A (Meredith Goins, WDS-IPO)



140+ members

Academic publishers focused on science, technology, medicine, social sciences, and humanities



66% of articles

Our members collectively publish 66% of all journal articles



20 countries

STM spans the globe — made up of publishers of all shapes and sizes

About STM

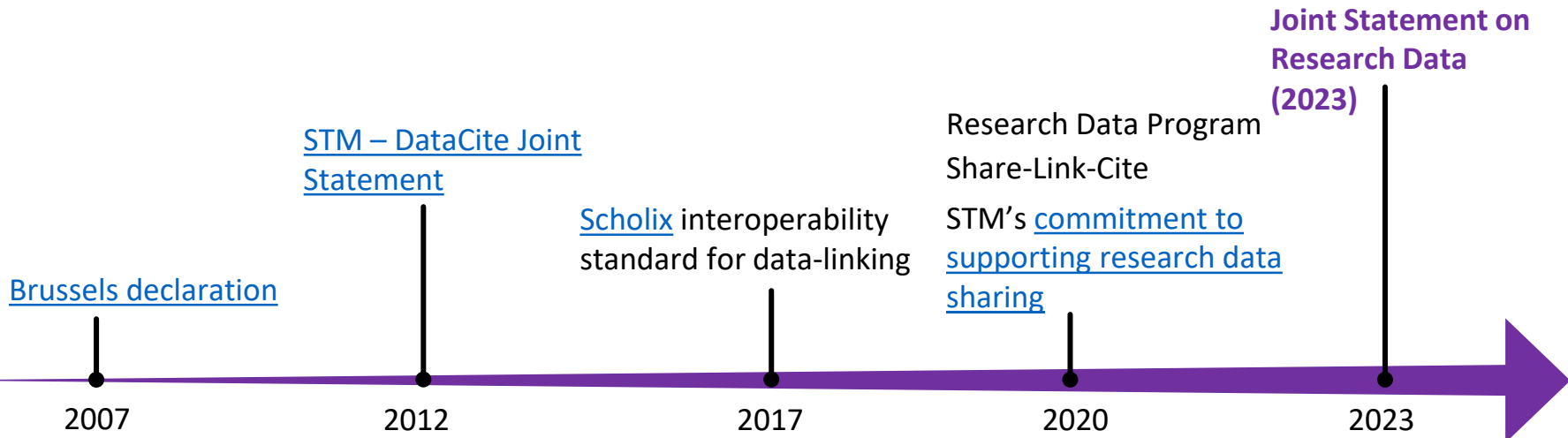
STM is the standard bearer for the academic publishing industry, working with our members to **advance trusted research** worldwide. We are committed to ensuring that the great discoveries of our time are communicated with **pinpoint accuracy, clarity and integrity**. We champion **innovation** across academic research, stimulating the development of new technologies and **guidance** on universal standards.



Advancing
trusted research

STM has a long-standing commitment to fostering the sharing of research data

Sharing research data is crucial to advance science and research. It advances transparency, reproducibility, and provides additional opportunities for scientific discovery and collaboration. STM is committed to supporting data sharing to advance open scholarship.



STM RESEARCH DATA PROGRAM

21

PARTICIPATING
PUBLISHERS



13,064

PARTICIPATING
JOURNALS



ELSEVIER

WILEY

SPRINGER NATURE

IOP Publishing



The Optical Society Since 1918



JAMA Network



EMERALD PUBLISHING



CAMBRIDGE UNIVERSITY PRESS



DE GRUYTER



WILEY INTERSCIENCE



Taylor & Francis Group



AMERICAN PSYCHOLOGICAL ASSOCIATION



AGU ADVANCING EARTH AND SPACE SCIENCE



ACS Chemistry for Life



SAGE Publishing



BRILL



AMERICAN SOCIETY OF CLINICAL ONCOLOGY KNOWLEDGE CONQUERS CANCER



OXFORD UNIVERSITY PRESS



Science JOURNALS MAMM



Karger



Wolters Kluwer

JOURNALS:
AVERAGE NUMBER
OF DATA POLICIES

29%
START
OF 2020

52%
END
OF 2020



OUR
PARTNERS



15

MEETINGS, WEBINARS
& WORKSHOPS



ARTICLES
THAT CONTAIN A
DATA AVAILABILITY
STATEMENT

7%
START
OF 2020

15%
END
OF 2020



JOURNALS
THAT CONNECT
TO SCHOLIX

34%
Q2
OF 2020

43%
END
OF 2020



<https://www.stm-assoc.org/research-data-program/>

The publishing partner in shaping the
research communication system of the future



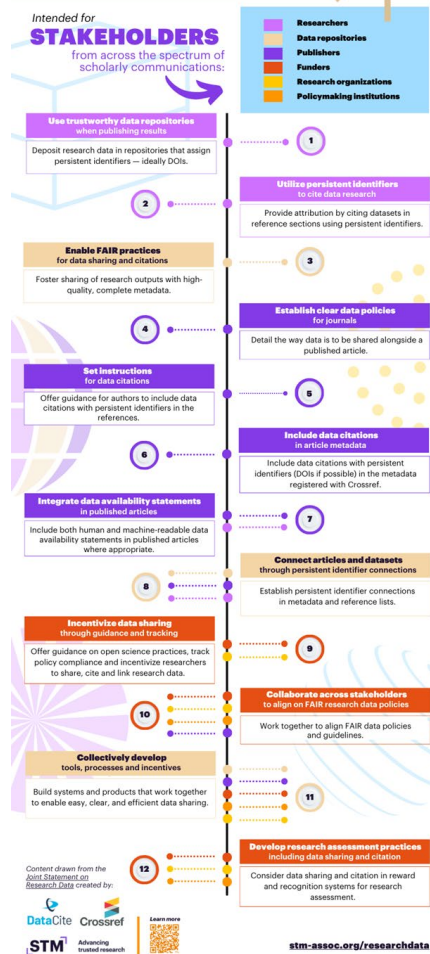


The 2023 Joint Statement on Research Data

- Re-affirms the importance of research data to improve the utility and rigor of the scholarly record
- Significant progress since the original 2012 statement:
 - 10 million data citations tracked;
 - thousands of repositories adopting data citation best practices;
 - thousands of journals adopting data policies, data availability statements and establishing persistent links between articles and datasets; and
 - the introduction of data policies by an increasing number of funders
- However, research data sharing is not yet a self-evident step in the research lifecycle.

We now have sufficient scholarly communication infrastructure in place to bring about widespread change and believe momentum is building for collective action

Aim of the statement: To accelerate adoption of best practices and policies, and encourage further development of critical policies in collaboration with a wide group of stakeholders



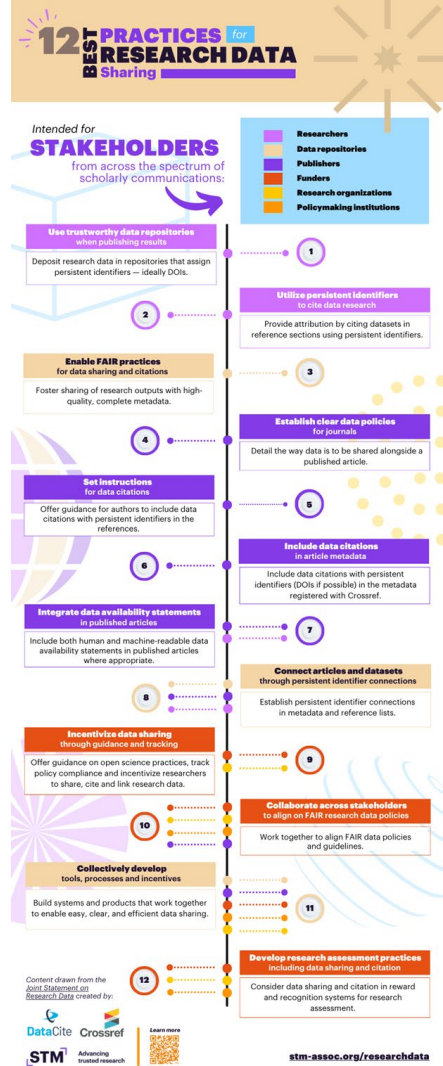
The 2023 Joint Statement on Research Data

Twelve best-practice recommendations directed at various stakeholder groups:

- Researchers
- Data repositories
- Publishers
- Funders
- Research organisations
- Policymaking institutions

With a call for individuals & organisations to endorse and explain how they will further these recommendations.

<https://www.stm-assoc.org/research-data-program/bestpractices/>





Recommendations for publishers

- Publishers set appropriate **journal data policies**, describing the way in which data is to be shared alongside the published article.
- Publishers set **instructions for authors** to include **Data Citations** with persistent identifiers in the references section of articles.
- Publishers **include Data Citations and links to data in Data Availability Statements** with persistent identifiers (DOIs where available) in the **article metadata registered with Crossref**.
- In addition to Data Citations, **Data Availability Statements** (human- and machine-readable) are included in published articles where appropriate.
- Repositories and publishers **connect articles and datasets** through persistent identifier connections in the metadata and reference lists.



Recommendations for publishers

- Publishers set appropriate **journal data policies**, describing the way in which data is to be shared alongside the published article.
- ▶ Publishers set **instructions for authors** to include **Data Citations** with persistent identifiers in the references section of articles.
- Publishers **include Data Citations and links to data in Data Availability Statements** with persistent identifiers (DOIs where available) in the **article metadata registered with Crossref**.
- In addition to Data Citations, **Data Availability Statements** (human- and machine-readable) are included in published articles where appropriate.
- Repositories and publishers **connect articles and datasets** through persistent identifier connections in the metadata and reference lists.



Recommendations for publishers

- Publishers set appropriate **journal data policies**, describing the way in which data is to be shared alongside the published article.
- Publishers set **instructions for authors** to include **Data Citations** with persistent identifiers in the references of articles.
- ▶ Publishers **include Data Citations and links to data in Data Availability Statements** with persistent identifiers (DOIs where available) in the **article metadata registered with Crossref**.
- In addition to Data Citations, **Data Availability Statements** (human- and machine-readable) are included in published articles where appropriate.
- Repositories and publishers **connect articles and datasets** through persistent identifier connections in the metadata and reference lists.



Recommendations for publishers

- Publishers set appropriate **journal data policies**, describing the way in which data is to be shared alongside the published article.
- Publishers set **instructions for authors** to include **Data Citations** with persistent identifiers in the references section of articles.
- Publishers **include Data Citations and links to data in Data Availability Statements** with persistent identifiers (DOIs where available) in the **article metadata registered with Crossref**.
- ▶ In addition to Data Citations, **Data Availability Statements** (human- and machine-readable) are included in published articles where appropriate.
- Repositories and publishers **connect articles and datasets** through persistent identifier connections in the metadata and reference lists.



Recommendations for publishers

- Publishers set appropriate **journal data policies**, describing the way in which data is to be shared alongside the published article.
 - Publishers set **instructions for authors** to include **Data Citations** with persistent identifiers in the references section of articles.
 - Publishers **include Data Citations and links to data in Data Availability Statements** with persistent identifiers (DOIs where available) in the **article metadata registered with Crossref**.
 - In addition to Data Citations, **Data Availability Statements** (human- and machine-readable) are included in published articles where appropriate.
- **Repositories and publishers connect articles and datasets** through persistent identifier connections in the metadata and reference lists.



Recommendations for publishers

- Publishers set appropriate **journal data policies**, describing the way in which data is to be shared alongside the published article.
- Publishers set **instructions for authors** to include **Data Citations** with persistent identifiers in the references section of articles.
- Publishers **include Data Citations and links to data in Data Availability Statements** with persistent identifiers (DOIs where available) in the **article metadata registered with Crossref**.
- In addition to Data Citations, **Data Availability Statements** (human- and machine-readable) are included in published articles where appropriate.
- Repositories and publishers **incentivize data sharing** through guidance and training.

Progress will be monitored through STM Research Data Implementation Group

Crossref, Data Citation, and the Research Nexus

Martyn Rittman, PhD
mrittman@crossref.org



@CrossrefOrg

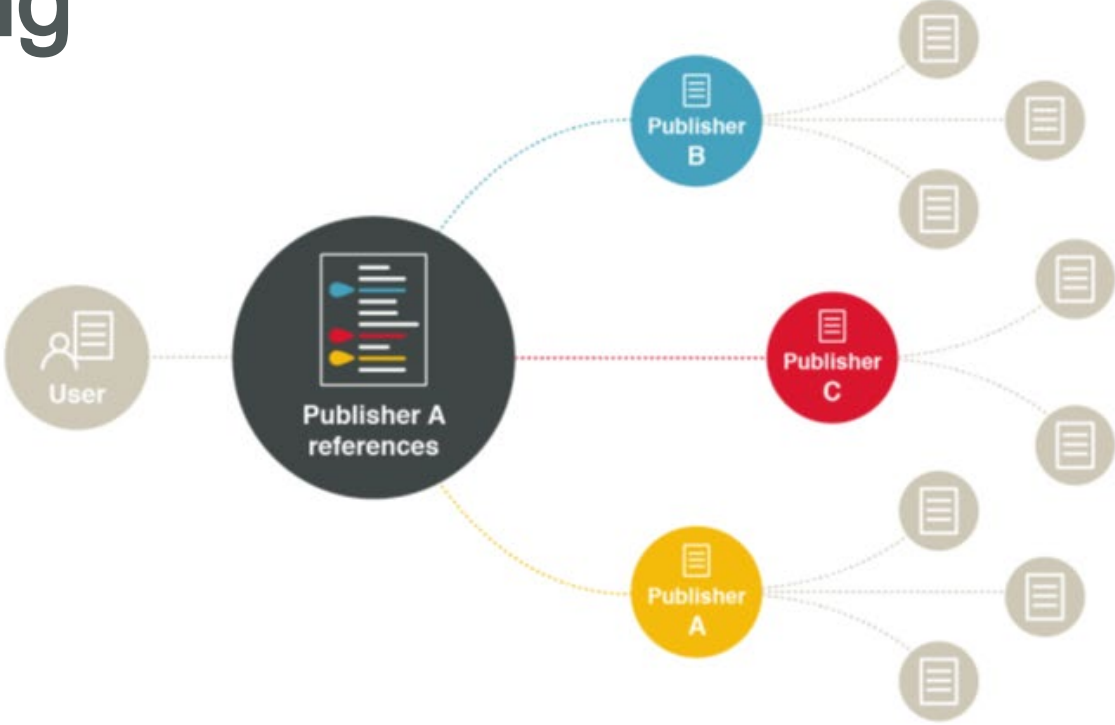


Our mission

Crossref makes research outputs easy to find, cite, link, assess, and reuse.

We're a not -for -profit membership organization that exists to make scholarly communications better.

Reference Linking



The research nexus





Data citations

- 340,000 data citations in Scholix endpoint *
- >32 orgs with > 1000 data citations since 2023

*we know there are more than this

Data citations in reference lists

Include data citations in the references you register with Crossref. Can be as simple as just providing the DOI for the dataset:

```
<citation key="ref2">  
  <doi>10.6084/m9.figshare.5981968</doi>  
</citation>
```

Crossref recognizes that the DOI is for a DataCite DOI and pass it to Event Data.

Make sure your typesetters, copy editors and hosting platforms are briefed on how to work with these links and don't remove them.

In practice



```
</citation>
▼<citation key="ref15">
  <doi>10.5281/zenodo.34014</doi>
</citation>
▼<citation key="ref16">
```



-
31. Martin, P. *et al.* Project IPAD, a database to catalogue the analysis of Fukushima Daiichi accident fragmental release material. *Mendeley* <https://doi.org/10.17632/nz6hjbfs65.3> (2020).
-

```
3/8-381 (1997).</unstructured_citation>
</citation>
▼<citation key="626_CR31">
  <author>P Martin</author>
  <cYear>2020</cYear>
  <doi>10.17632/nz6hjbfs65.3</doi>
  <unstructured_citation>Martin, P. et al. Project IPAD, a database to catalogue the analysis of Fukushima Daiichi accident fragmental release material. Mendeley
  https://doi.org/10.17632/nz6hjbfs65.3 (2020).</unstructured_citation>
</citation>
```


But in some cases

11. SAPEA, Science Advice for Policy by European Academies (2019). *A Scientific Perspective on Microplastics in Nature and Society*. Berlin: SAPEA. doi: <https://doi.org/10.26356/microplastics>

```
-----  
<volume_title>A Scientific Perspective on Microplastics in Nature and Society</volume_title>  
<author>SAPEA, Science Advice for Policy by European Academies</author>  
<cYear>2019</cYear>  
</citation>  
-----
```

8. Holinski A, Burke ML, Morgan SL, et al.: Biocuration - mapping resources and needs - Underlying Data (Version 2) [Data set].Zenodo. 2020. <http://www.doi.org/10.5281/zenodo.3991737>

```
</citation>  
▼<citation key="ref-8">  
  <journal_title>Zenodo.</journal_title>  
  <author>A Holinski</author>  
  <cYear>2020</cYear>  
  <article_title>Biocuration - mapping resources and needs - Underlying Data (Version 2) [Data set].</article_title>  
</citation>  
-----</ref-8">
```

Data citations as relationships

Include relationships between DOIs and other items:

```
<rel:related_item>
  <rel:description>Sicard-2018-External-database-S1
</rel:description>
  <rel:inter_work_relation identifier-type="doi" relationship-
type="isSupplementedby">
    10.6084/m9.figshare.5981968
  </rel:inter_work_relation>
</rel:related_item>
```

Relations metadata is currently available via Crossref's REST API and Event Data.



Delivering data citations

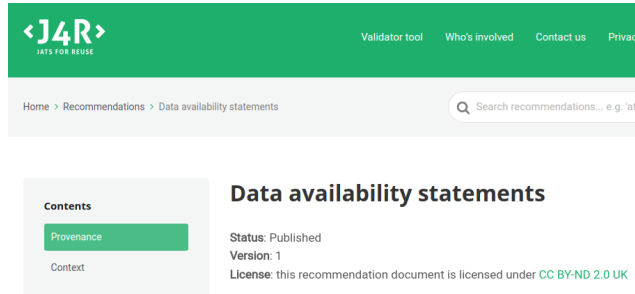
Scholix / Event Data:

- Not at production level
- Incomplete data
- Paused work on a successor in April 2024

Reference lists from REST API:

- Production support
- Complete and accurate
- Data citations are needles in a haystack (1 million in 1.5 billion)

Future schema changes



The screenshot shows the J4R (JATS FOR REUSE) website. The header is green with the J4R logo and navigation links: Validator tool, Who's involved, Contact us, and Privacy. Below the header is a breadcrumb trail: Home > Recommendations > Data availability statements. A search bar is visible with the text 'Search recommendations... e.g. 'all''. On the left, there is a 'Contents' sidebar with 'Provenance' highlighted in green, and 'Context' below it. The main content area is titled 'Data availability statements' and includes the following information: Status: Published, Version: 1, and License: this recommendation document is licensed under CC BY-ND 2.0 UK.

[https://jats4r.niso.org/
data-availability-statements/](https://jats4r.niso.org/data-availability-statements/)

Expanded citation markup with publication types:

```
<citation key="ref3"  
publication_type="data">
```

Further plans to collect data availability statements in the Crossref metadata.

About DataCite



We are a global community that shares a common interest: to ensure that research outputs and resources are openly available and connected so that their reuse can advance knowledge across and between disciplines, now and in the future.

As a global non-profit membership organization, we work with 3100+ repositories in the world to provide DOIs for research outputs and resources.

Our community



1406

Organizations



3100

Repositories



55

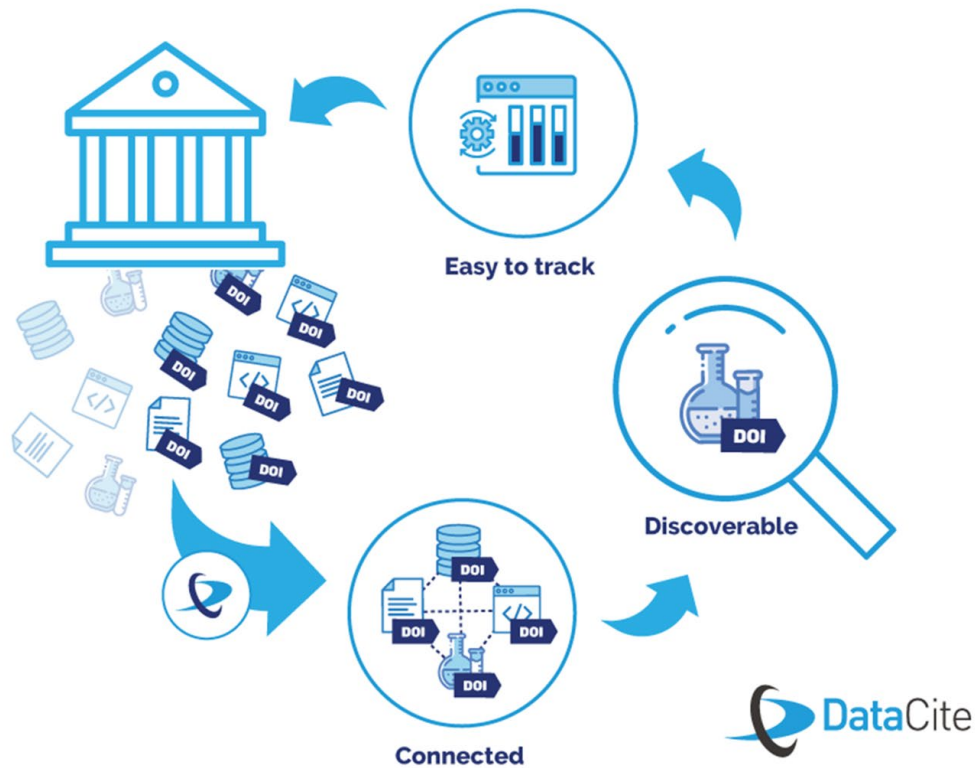
Countries



61m+

DOIs

What we do & why



Joint Statement on Research Data: a role for everyone

Researchers

- When publishing their results, researchers deposit related research data and outputs in a trustworthy data repository that assigns persistent identifiers (DOIs where available). Researchers link to research data using persistent identifiers.
- When using research data created by others, researchers provide attribution by citing the datasets in the reference section using persistent identifiers.

Repositories


- Data repositories enable sharing of research outputs in a FAIR way, including support for metadata quality and completeness.
- Repositories and publishers connect articles and datasets through persistent identifier connections in the metadata and reference lists.

Data Citation & Repositories

Repositories play an important role in data citation by linking data to related articles (or other outputs) and making this information available to the community

- Ask researchers to include associated publications in dataset metadata
- Include those links in DataCite metadata

Related Identifiers Identifiers of related resources.

10.1111/jeb.13000 

Must be a globally unique identifier. Visit our support website for [the list of supported unique identifiers](#).

* Related Identifier Type

DOI ▼

The type of the Related Identifier.

* Relation Type

Is referenced by ▼

The type of the Relation.

DataCite metadata deposit




The **RelatedIdentifier** field in the DataCite metadata schema can be populated in order to generate a link between the data and the publication that cites it.

Mandatory sub-properties:

- **relatedIdentifierType**: the type of identifier
- **relationType**: the type of relationship

Related Identifiers Identifiers of related resources.



Must be a globally unique identifier. Visit our support website for [the list of supported unique identifiers](#).

* Related Identifier Type

DOI

The type of the Related Identifier.

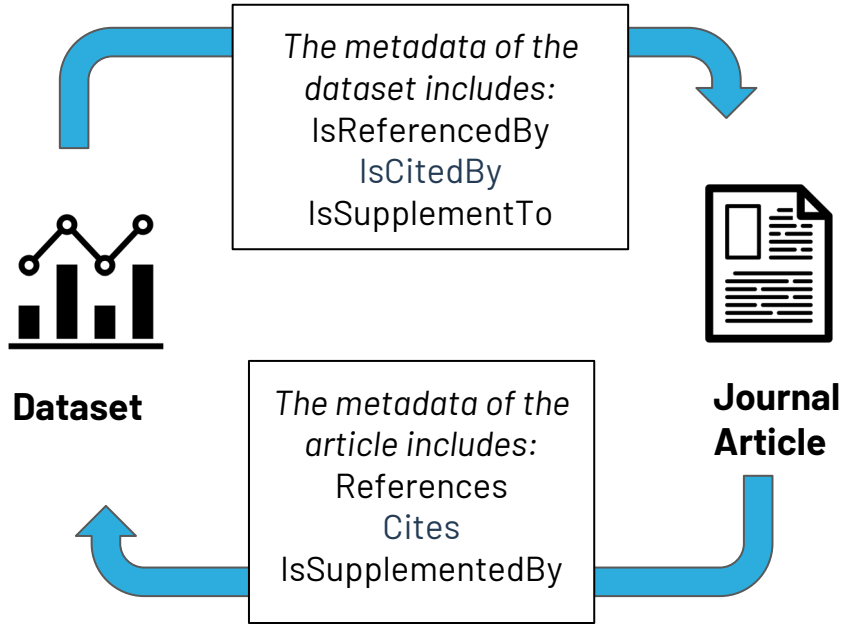
* Relation Type

Is referenced by

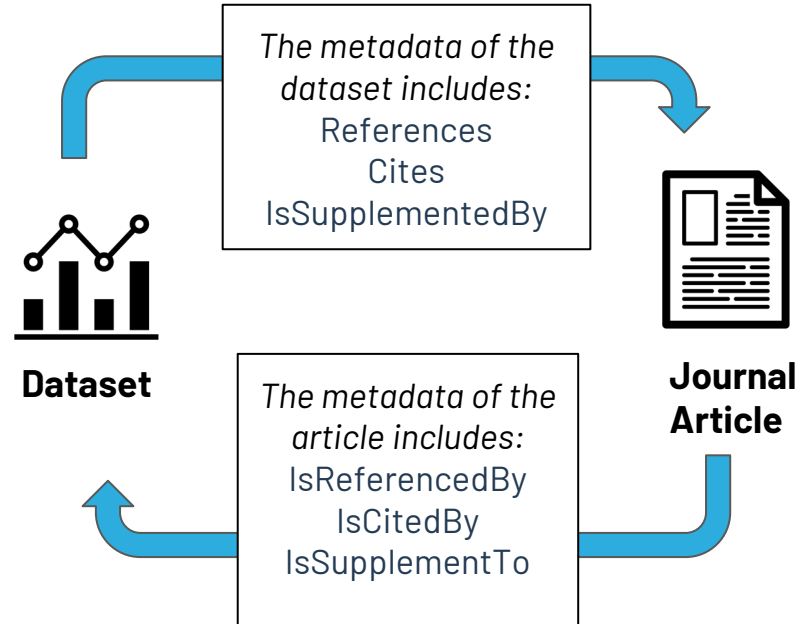
The type of the Relation.

<https://support.datacite.org/docs/contributing-citations-and-references>

How to create citations



Citation of a dataset



Citation of an article

DataCite Commons - surfacing citations



DataCite Commons

Type to search...

Pages - Support

Corona Virus (COVID-19) Tweets Dataset (en)

<https://doi.org/10.21227/781w-ef42>

Cite as

Lamsal, R. (2020). *Corona Virus (COVID-19) Tweets Dataset (en)* [Data set]. IEEE DataPort.
<https://doi.org/10.21227/781W-EF42>

APA

Share

Filter Works

Type to search...

Authors ?

<input type="checkbox"/> Sheikh, Aziz	2
<input type="checkbox"/> Tahir, Ahsen	2
<input type="checkbox"/> Hussain, Zain	2

17 Citations

Description Creators Registration

Each database (*.db) contain three columns. First column: date and time of the tweetSecond column: tweetThird column: sentiment score for the particular tweet within the range [-1,1] with -1 being the most negative, 0 being the neutral and +1 being the most positive sentiment. The tweets have been collected by the LSTM model deployed here at sentiment.live. To make it easy for the NLP researchers to get access to the sentiment analysis of each collected tweet, the sentiment score out of TextBlob [2] has been appended as the last column. [1] <https://sentiment.live/> [2] <https://textblob.readthedocs.io/en/dev/>

Open Access Dataset published 2020 in [IEEE DataPort](#)

<https://doi.org/10.21227/781w-ef42>

17 Citations

Publication Year

Year	Citation Count
2020	5
2020	5
2020	6
2021	1

Work Type

17

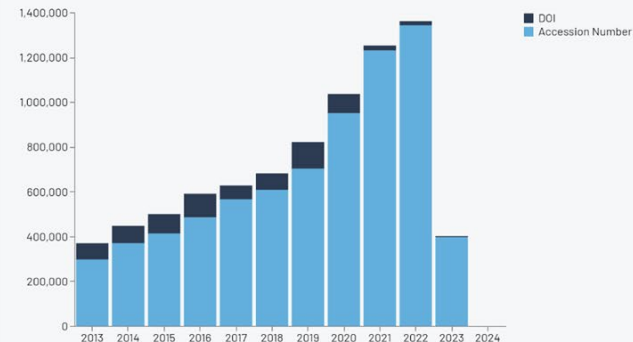
License

17

<https://commons.datacite.org/doi.org/10.21227/781w-ef42>

The Data Citation Corpus

Citation counts over time

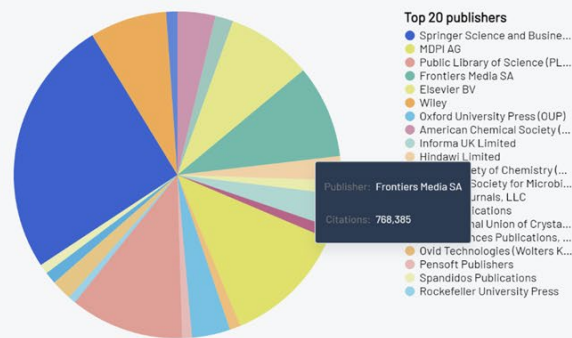


Chart

Table

Download

Citation counts by publisher



Chart

Table

Download

Counts of unique repositories, journals, subjects, affiliations, funders



Citation counts by subject

Filter Facets



World Data System Mission

The **mission of the World Data System** is to enhance the capabilities, impact, and sustainability of our member data repositories and data services by:



Creating trusted communities of scientific data repositories



Strengthening the scientific enterprise throughout the entire lifecycle of data and all related components creating first-class data that feeds first-class research output



Advocating for accessible data and transparent and reproducible science

WDS Historical Context

International Polar Year (IPY)

International Research Council

IPY

International Council for Science

WDS IPO opens in Japan

WDS IPO moves to USA

1899

1931

1957

2007

2018

1882

1919

1932

1998

2008

2021

International Association of Academics

International Council of Scientific Unions

World Data Centers
Federation
Astronomical
Geophysical Analysis
Services

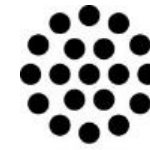
IPY

International Science Council

WDS ITO opened

WDS Personnel

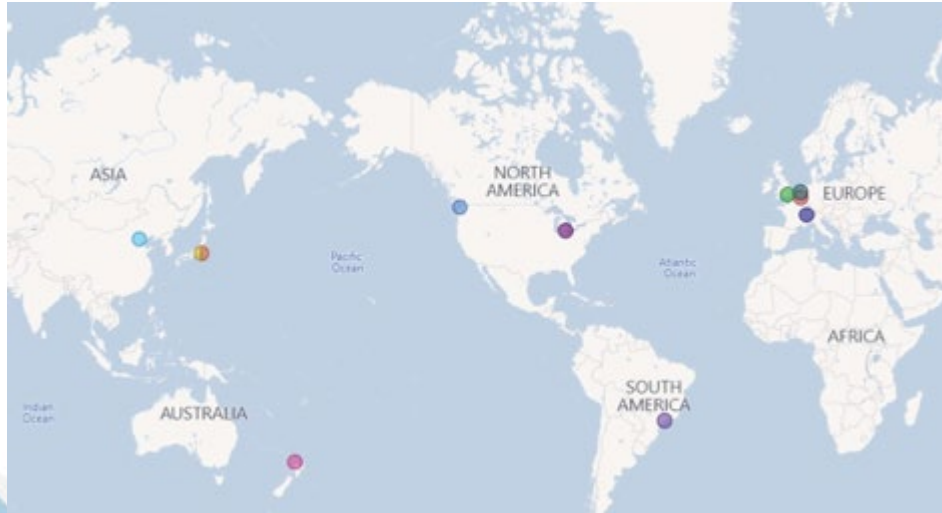
An affiliate organization of the
International Science Council



**International
Science Council**

The global voice for science

The **Scientific Committee** which governs the World Data System is comprised of leading scientists & experts who are actively involved with data; includes directors of WDS member organizations with diverse disciplines & geography.



Scientific Committee
David Castle, Chair



IPO
Meredith Goins
Oak Ridge, Tennessee
USA



ITO
Reyna Jenkyns
Victoria, BC
Canada



WDS Membership

91 Regular	Certified Data Repositories
10 Network	Umbrella bodies of data repositories
10 Partner	Contribute support to WDS membership
22 Associate	Interested in the WDS endeavour
Candidate	Preparing or undergoing certification

Why WDS endorsed

Aligned with WDS mission,
inclusive of many stakeholder types with actionable
guidance.

*#1. When publishing their results, researchers deposit related research data and outputs in a **trustworthy data repository** that assigns **persistent identifiers** (DOIs where available). Researchers link to research data using persistent identifiers*



- certification as a basis of WDS regular membership
- CoreTrustSeal Requirements 2023-2025
<https://doi.org/10.5281/zenodo.7051012>
- R12 - Discovery and Identification: The repository enables users to discover the digital objects and refer to them in a persistent way through proper citation.

World Data System

wds-ipo@utk.edu



Transparency, Responsibility, User
focus, Sustainability, Technology

RDA/WDS TRUST Principles
Outreach and Adoption Working
Group, co-chaired by Meredith
Goins

<https://www.rd-alliance.org/groups/rdawds-trust-principles-outreach-and-adoption-working-group>

worlddatasystem.org



Why WDS endorsed

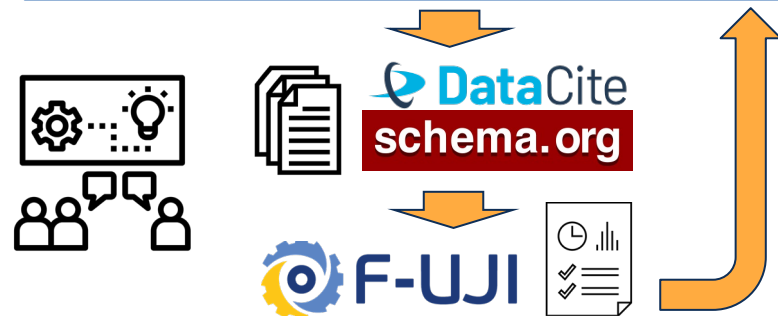
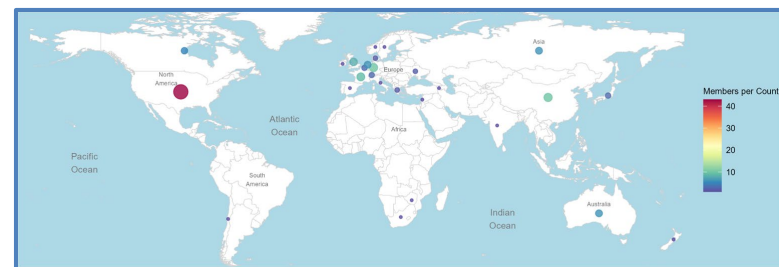
FAIR Principles

- preparing activities for **automated assessments** and FAIRness improvements.
- participant in **FAIR-Impact support action** for *“Recommendations for trustworthy and FAIR-enabling data repositories”*
- PID and licensing support



#3. Data repositories enable sharing of research outputs in a **FAIR** way, including support for **metadata quality and completeness**.

#10. Funders, policymaking institutions, publishers and research organizations collaborate towards aligning **FAIR research data policies and guidelines**.



Why WDS endorsed

#4,5,6,7,8,11. Publisher & repository interactions to support data citations, research object relationships and workflows.

Coalition for Publishing Data in the Earth and Space Sciences (COPDESS) is a collaboration among research repositories, scholarly publishers, and other stakeholders focused on leading practices around the preservation and citation of data, software, and physical samples that lead toward credit and reuse.

Newly formed [RDA Coordinating Earth, Space, and Environmental Science Data Preservation and Scholarly Publication Processes WG](#) - [rationale available for community review](#) until July 12 (login to post comments).

Chairing upcoming conference sessions on PIDs

- [Earth Science Information Partners Summer Meeting, 2024-07: Embracing Expanded DataCite Schema Support for IGSNs, Instruments, Publishers, and Funder PIDs](#)
- American Geophysical Union (AGU), 2024-12: [IN019 - Curating and Interconnecting Persistent Identifiers for Better Research and Funder Mandates](#) (Abstracts due July 31)

Why WDS endorsed

*#12. Stakeholders responsible for **research assessment** take into account data sharing and data citation in their reward and recognition system structures.*

Research assessment emerged as one of the highest priorities at the 2023 WDS Member Forum.

WDS submitted responses to International Science Council surveys on Research Assessment (2023-12) and Scientific Publishing (2024-02), emphasizing the value of datasets and other research outputs to demonstrate impact.



Call to action

Endorse & promote the [Joint Statement on Research Data](#)

Share in the chat activities or initiatives that your organization is doing to act upon these recommendations.

Schedule time to take a moment to consider what more you can do.

Discussion

Stay Tuned for Our Riveting Webinar Series!



<https://worlddatasystem.org/webinars/>

Secure Your Spot in Our Future Webinars

Rewind and Rediscover: Watch Our Past Webinar Sessions



Upcoming Webinar

Navigating the Path to Success in Disaster Data Management

Speakers:

- **Dr. Junshi Xia**, Senior Research Scientist, RIKEN Center for Advanced Intelligence Project, Geoinformatics Team, Japan
- **Dr. Zhang Fen**, Associate Professor, Institute of Geographic Information Science & Provincial Key Lab of GIS at Zhejiang University, P. R. China

Date: 25 June

Time: 01:00 AM UTC



For more info:

Email us at wds-ipo@utk.edu

Visit our website at worlddatasystem.org

Instagram: @wds_ipo

Facebook: @WorldDataSystem.International

LinkedIn: @company/world-data-system

X (formerly Twitter): @ISC_WDS

Vimeo: @worlddatasystem



**International
Science Council**

