

How to be a successful project leader: balancing users', architects' and planners' requirements in the financial and legal context

A balancing act between form and function



Forum LC June 2013



© Rainer Wicke

Main Entrance OMV Central Library



© Zaha Hadid Architects



© Zaha Hadid Architects

Separation of administrative and library body



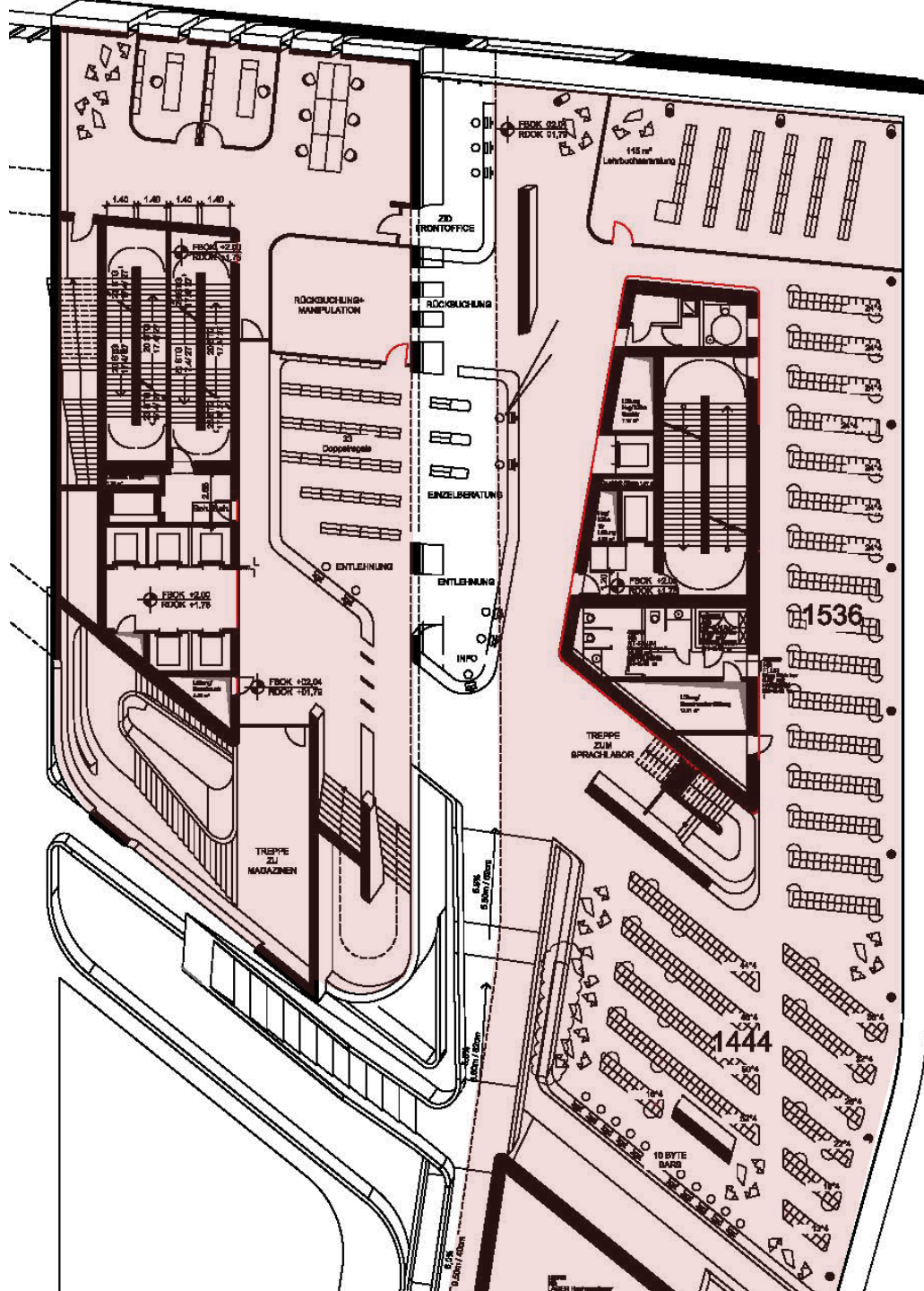
© Zaha Hadid Architects

Glass - seam / „Die Fuge“

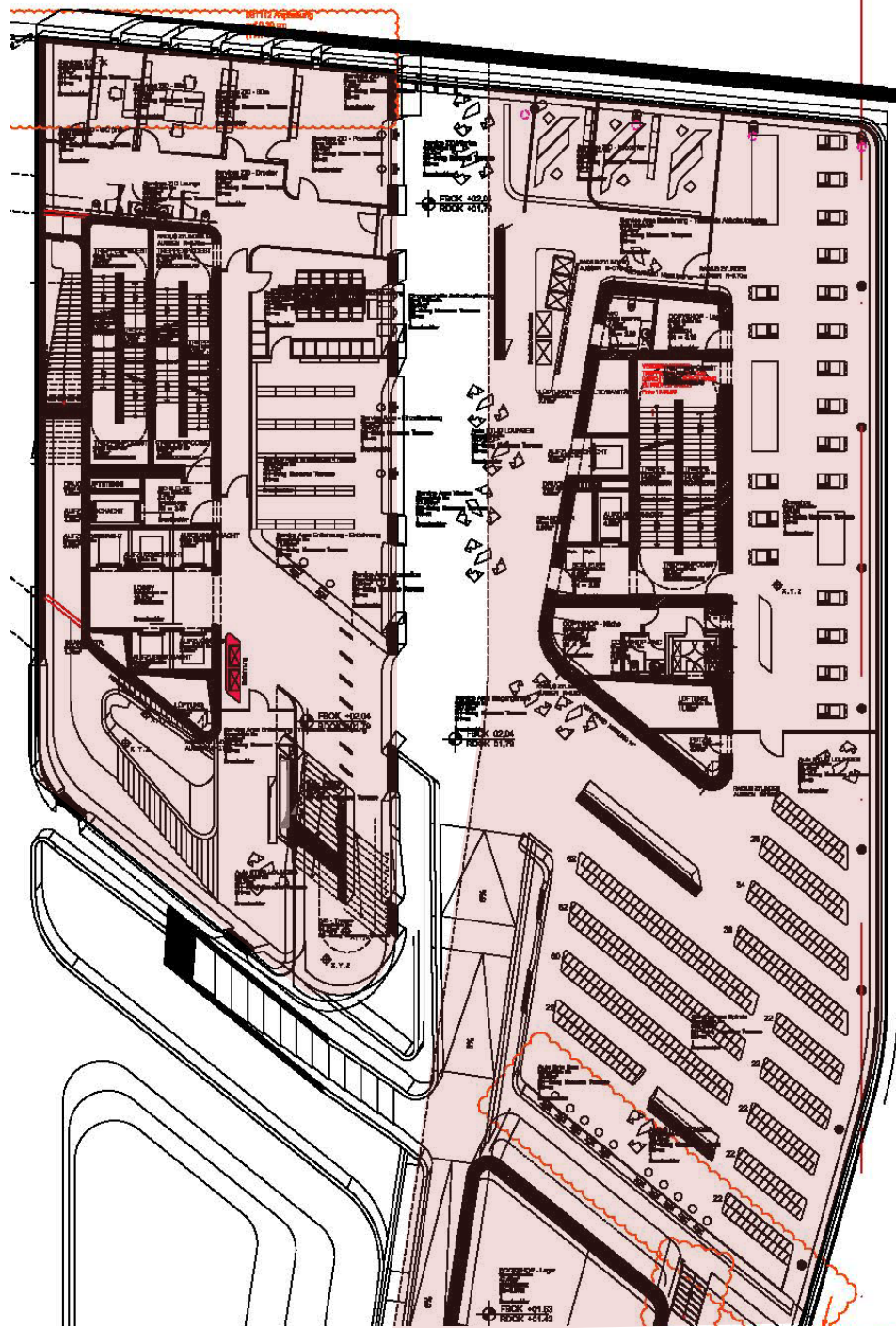


© 2013 BOANET.AT

Glass - seam / „Canyon“

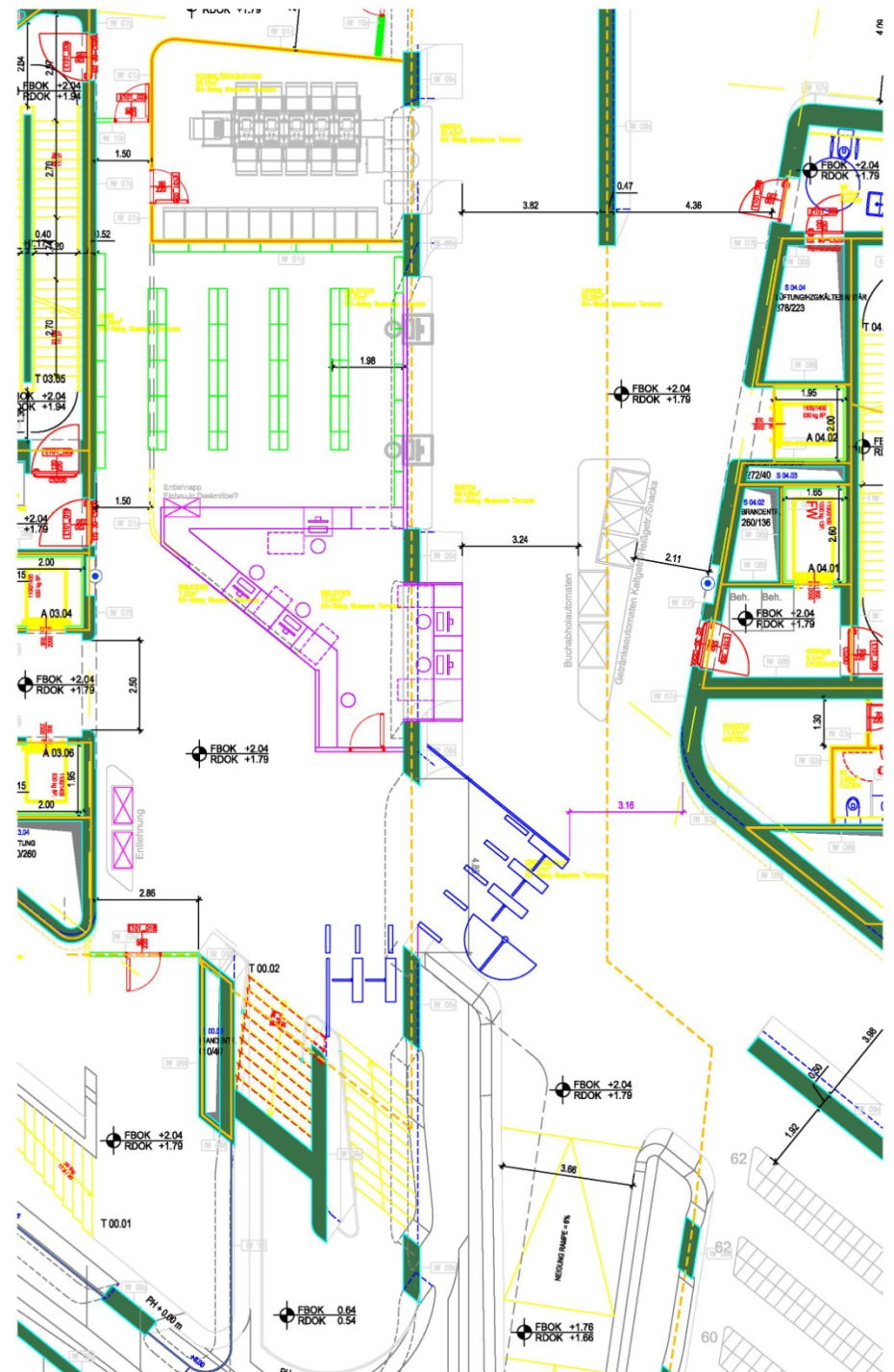


Floorplan Level +1
September 2009

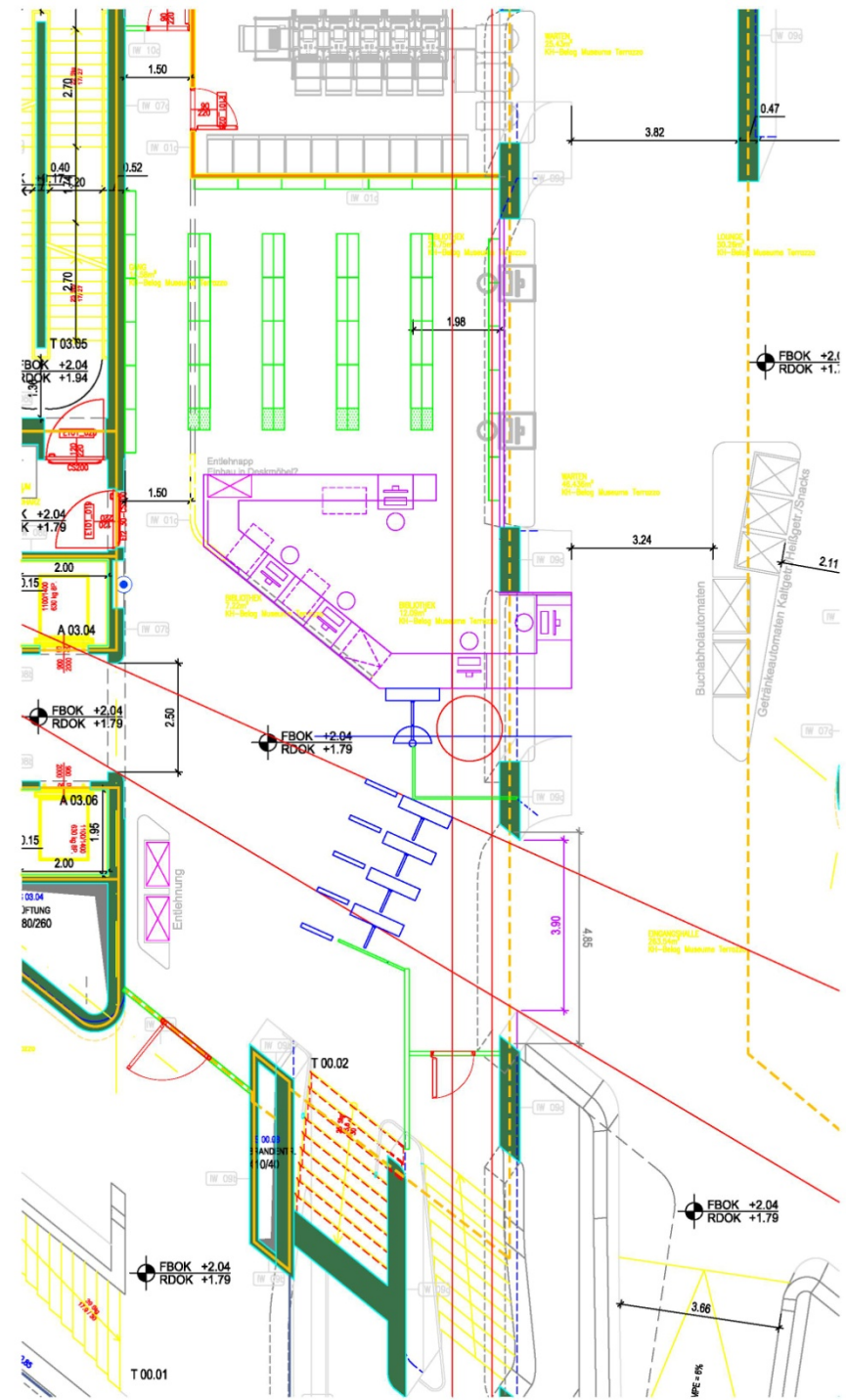


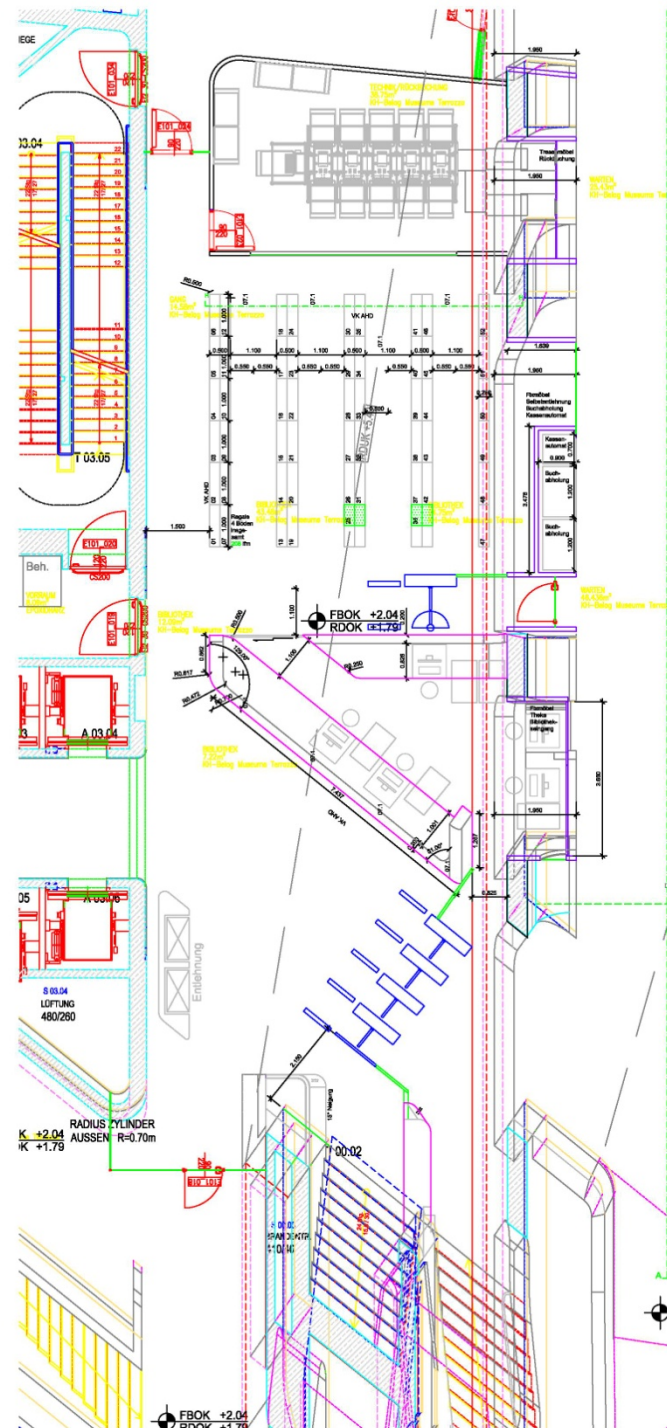
Floorplan Level +1
November 2009

Variations of turnstile & RFID gates positions in main entrance



Variations of turnstile & RFID gates positions in main entrance





Final positioning of turnstile & RFID Gates in main entrance



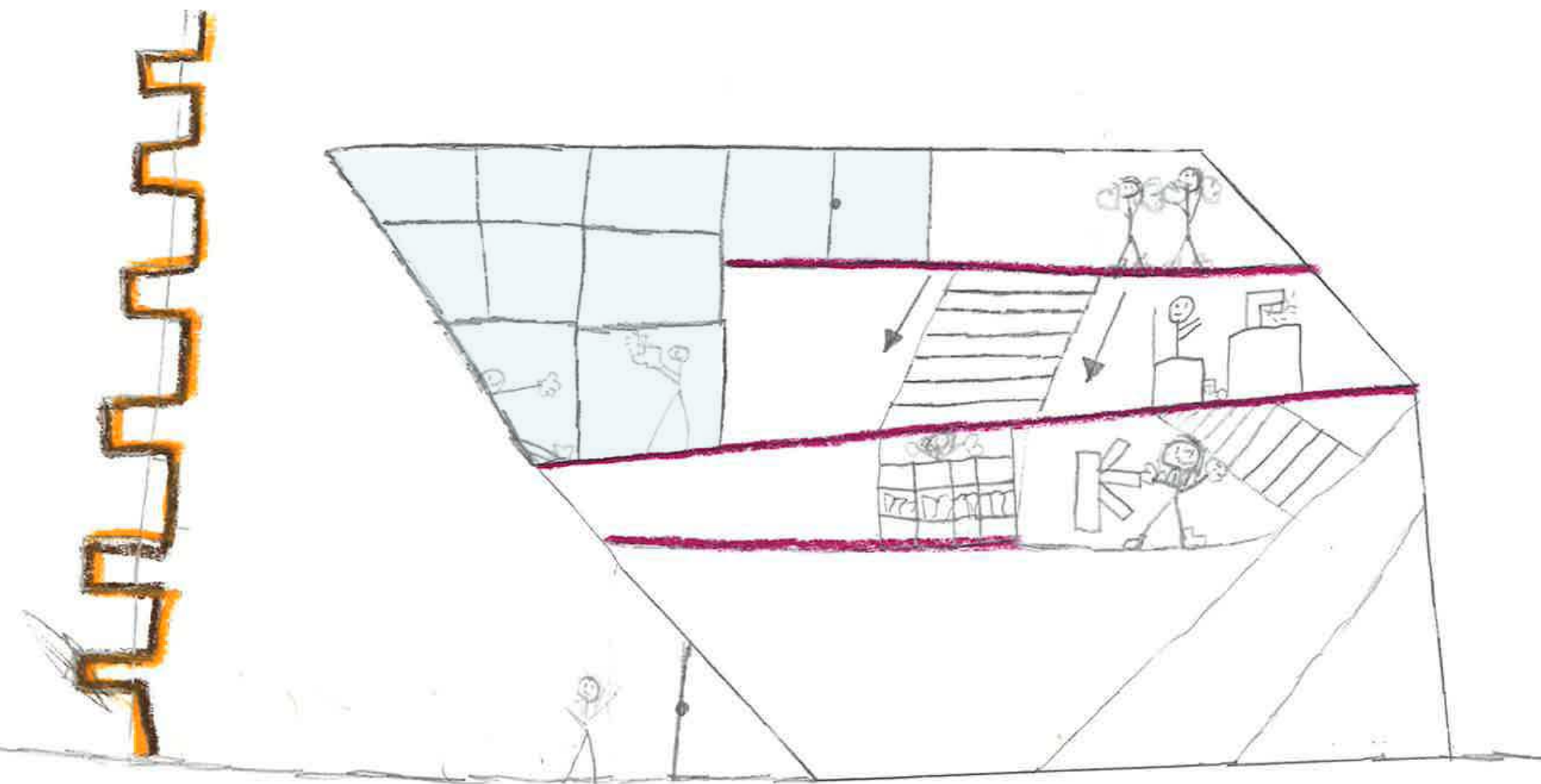
Shell construction of canyon wall
May 2012

© Rainer Wicke



© Rainer Wicke

Main Entrance OMV Central Library



Thank you very much for your
attention

DI Ann-Barbara Keßler
projectmanager relocation and renovation
]a[academy of fine arts vienna

T: + 43 (1) 58816 – 1160

M: +43 (664) 808871160

a.kessler@akbild.ac.at

www.akbild.ac.at