



Research Article

A survey of beetles (Coleoptera) from the tundra surrounding the Nunalleq archaeological site, Quinhagak, southwestern Alaska

Véronique Forbes^{‡,§,|}, Derek Sikes[¶]

‡ Université de Bordeaux, Bordeaux, France

§ University of Aberdeen, Aberdeen, United Kingdom

| Memorial University of Newfoundland, St. John's, Canada

¶ University of Alaska Museum, Fairbanks, United States of America

Corresponding author: Véronique Forbes (veroforbes@gmail.com)

Academic editor: David Bilton

Received: 05 Dec 2017 | Accepted: 23 Feb 2018 | Published: 02 Mar 2018

Citation: Forbes V, Sikes D (2018) A survey of beetles (Coleoptera) from the tundra surrounding the Nunalleq archaeological site, Quinhagak, southwestern Alaska. Biodiversity Data Journal 6: e22788.

<https://doi.org/10.3897/BDJ.6.e22788>

ZooBank: [urn:lsid:zoobank.org:pub:05DDF6A8-1D5B-4DA4-BC4C-C5048A5BA90D](https://www.zoobank.org/pub:05DDF6A8-1D5B-4DA4-BC4C-C5048A5BA90D)

Abstract

This paper presents the results of a survey of beetles conducted in the vicinity of the archaeological site of Nunalleq, a pre-contact (16th-17th century AD) indigenous forager settlement located near the modern Yup'ik village of Quinhagak, in the Yukon-Kuskokwim delta, southwestern Alaska. Records and habitat data are reported for 74 beetle taxa collected in tundra, riparian, aquatic and anthropogenic environments from a region of Alaska that has been poorly studied by entomologists. This includes the first mainland Alaskan record for the byrrhid *Simplocaria metallica* (Sturm). Beyond improving our knowledge of the local beetle fauna's diversity and ecology, this survey provides the basis for comparisons between modern and sub-fossil beetle assemblages from Nunalleq and Quinhagak.

Keywords

Coleoptera, Archaeology, Insect subfossils, Alaska, Yup'ik

Introduction

Until recently, the arthropod fauna of Alaska has been comparatively less well studied than that of other states and provinces of Canada and the USA. In part this is caused by the fact that some regions are particularly difficult to access due to their topography, hydrology or remoteness to urban agglomerations. This is the case of the Yukon-Kuskokwim (Y-K) delta, a flat, treeless area of south-western Alaska where the tundra environment is dissected by numerous rivers, streams, lakes and ponds and underlain by discontinuous permafrost. Travel by motorised vehicle is impractical over most of the delta's expanse, making small boats and planes the most reliable transport means within the area. Karl Lindroth and Georges E. Ball are two of the few entomologists known to have visited the region, when, as part of Lindroth's seminal study of the ground beetles of Canada and Alaska (Lindroth 1961, Lindroth 1963b, Lindroth 1966, Lindroth 1968, Lindroth 1969a, Lindroth 1969b), they conducted a survey of the carabids of the western Alaskan tundra. Little entomological work has been done in the area since this date (although see Hayford et al. 2014 for a survey of chironomids (Diptera: Chironomidae) from the region).

From 2013, one of the team (VF) became engaged in a scientific, community and heritage project involving the excavation of Nunalleq, a pre-contact Thule-era (16th-17th century AD) site located on the Bering Coast of the Yukon-Kuskokwim delta, approximately 20 km south of the Yup'ik village of Quinagak. One of the objectives of the project was to reconstruct past climatic conditions and human environment-interactions on the basis of ecological information derived from beetle remains preserved in the archaeology (Forbes et al. 2015). Similar palaeo-environmental reconstructions based on sub-fossil insect fauna have been conducted in Alaska, although on older deposits, most of which were not directly connected to human occupations (e.g. Bigelow et al. 2014, Elias 1992, Elias 2000, Elias 2001, Elias and Matthews 2002, Elias and Short 1992, Elias et al. 1992, Elias et al. 1996, Elias et al. 1997, Elias et al. 1999, Elias et al. 2000, Matthews et al. 2003, Reyes et al. 2010, Reyes et al. 2011, Wilson and Elias 1986, Wooller et al. 2011). Sound knowledge of the insect fauna of the study locale is required to both successfully identify disarticulated sub-fossil remains and derive ecological information from them (Elias 2010, Forbes et al. 2016). For this reason, it was decided to conduct a small-scale entomological survey concurrently with the archaeological excavations at Nunalleq. The objective of the survey, beyond familiarisation with the local fauna, was to obtain a sample of the modern beetle fauna from the coastal tundra and anthropogenic habitats with which the beetle sub-fossils from Nunalleq could be compared. This paper reports the list of taxa obtained and discusses their significance for palaeo-entomological and archaeo-entomological research.

Material and methods

Fieldwork was conducted during two consecutive field seasons within a 5 km radius of the Nunalleq archaeological site (59°42.559' N 161°53.510' W WGS84, Fig. 1). The first season ran from the 28th of July to the 28th of August 2014 and the second, from the 2nd of July to the 10th of August 2015. In order to obtain a sample as representative as possible of the local beetle fauna's diversity (within the constraint imposed by logistics and timing), different techniques were selected (Table 1). Pitfall traps were used to capture beetles crawling on the tundra, the seashore and disturbed ground around the archaeological excavation. They were made of plastic cups (7 cm diameter and 9 cm deep) half-filled with seawater, to which a few drops of dishwashing liquid were added (Fig. 2a). To capture flying beetles, flight interception traps were used, made up of a black mosquito mesh (1.2 m high and 1.4 m wide) stretched vertically between two posts. A set of plastic food containers half-filled with seawater was placed beneath the mesh to collect the insects (Fig. 2b). The pitfall and interception traps were emptied twice per week. Additional sampling techniques included beating vegetation, dipping and sifting and/or separation using a mini-Winkler extractor (Fig. 2c) and hand collecting.

Table 1.

List and description of the different habitats sampled in the vicinity of the Nunalleq archaeological site.

Habitat	Description	Sampling techniques
Open tundra	Flat tundra with moist to wet ground and low-lying vegetation characterised by herbs (e.g. <i>Eriophorum angustifolium</i>), mosses (e.g. <i>Sphagnum</i> sp., <i>Polytrichum</i> sp.), lichen, heaths and dwarf shrubs (e.g. <i>Ledum palustre</i> , <i>Rubus chamaemorus</i> , <i>Empetrum nigrum</i> , <i>Betula nana</i>).	Pitfall and interception traps, hand collection, sifting/mini-Winkler
Scrub tundra	Flat tundra with moist to dry ground and vegetation dominated by dwarf willow (<i>Salix</i> sp.) scrub heaths and shrub (e.g. <i>Empetrum nigrum</i> , <i>Vaccinium vitis-idea</i> , <i>Betula nana</i> , <i>Rubus chamaemorus</i>).	Pitfall traps, beating vegetation
Aquatic	Small ponds of stagnant water with <i>Sphagnum</i> mosses and <i>Eriophorum angustifolium</i> at the water edge.	Dipping net and hand collection
Seashore	Beach with sandy and clayey soil, some areas with sparse vegetation (e.g. <i>Honckenya peploides</i> , <i>Senecio pseudoarnica</i> , <i>Mertensia maritima</i> , <i>Leymus arenarius</i>).	Pitfall traps, hand collection
Disturbed/ anthropogenic	Habitats created through disturbance by human activity including spoil heaps, trampled areas and excavation trench of the Nunalleq archaeological site. Vegetation cover is typically sparse and characterised by, but not limited to, species such as <i>Achillea millefolium</i> , <i>Matricaria matricarioides</i> , <i>Rumex graminifolius</i> and <i>Rorippa islandica</i> . This category also includes the interior of modern buildings in Quinhagak.	Pitfall traps, hand collection
Riparian	Gravelly bank of the Arolik river, with willow (<i>Salix</i>) trees a few metres away from the water.	Beating vegetation, dipping net



Figure 1. [doi](#)

Map of the Yukon-Kuskokwim Delta region of Alaska, showing the location of the Nunalleq archaeological site (image by P. Ledger).

Identifications of the beetle taxa were achieved through anatomical comparisons with specimens from the University of Alaska Museum Insect Collection (UAM) in Fairbanks, the Canadian Collection of Insects, Arachnids and Nematodes in Ottawa (CNC) and the Laurentian Forestry Centre's René-Martineau Insectarium in Quebec City (LFC). For some specimens, such as those belonging to the Staphylinidae subfamilies *Aleocharinae*, *Omaliinae* and *Staphyliniinae*, as well as the *Pterostichus* subgenus *Cryobius* Chaudoir, this was facilitated by microdissections to allow observation of the genitalia. Identifications were aided by consultation of identification keys and descriptions in entomology publications (Anderson and Peck 1985, Arnett and Thomas 2001, Arnett et al. 2002, Askevold 1991, Bousquet 1990, Bousquet 2010, Bright 1987, Buchanan 1927, Campbell 1978, Campbell 1984, Campbell 1991, Campbell 1983, Campbell 1982, Campbell 1973, Casey 1884, Downie and Arnett 1994, Downie and Arnett 1996, Gusarov 2004, Hatch 1971, Johnson 1991, Larson et al. 2000, Lindroth 1961, Lindroth 1963b, Lindroth 1966, Lindroth 1968, Lindroth 1969a, Lindroth 1969b, Klimaszewski et al. 2011, Klimaszewski et al. 2008, Lohse et al. 1990, O'Brien 1970, Ratcliffe 1996, Shavrin 2016, Smetana 1971, Wells 1991). Many specimens were identified, or had their identification confirmed, by taxonomic specialists. The taxonomic classification of Bousquet et al. (2013) was used.

Information regarding the ecology of individual taxa was compiled from habitat records and descriptions in the literature (Anderson and Peck 1985, Arnett and Thomas 2001, Arnett et al. 2002, Askevold 1991, Ball 1966, Bousquet 1990, Bousquet et al. 2013, Campbell 1973, Campbell 1978, Campbell 1982, Campbell 1983, Campbell 1984, Campbell 1991, Collet 2008, Elias 1992, Erwin 2007, Gordon 1985, Gusarov 2004, Hicks 1959, Horn 1880, Klimaszewski et al. 2011, Klimaszewski et al. 2008, Klimaszewski et al. 2016, Laroche and Larivière 2003, Larson et al. 2000, Lindroth 1961, Lindroth 1963b, Lindroth 1966, Lindroth 1968, Lohse et al. 1990, Majka and Langor 2008, Majka and Langor 2011, Matthews 1983, O'Brien 1970, Ratcliffe 1996, Shavrin 2016, Sikes et al. 2016, Smetana

1971). This was then used to classify these taxa into broad habitat categories, as is customary in archaeo-entomological studies (Buckland 2009, Kenward 2009). The authors also queried the distribution data available for each of the taxa represented in the dataset in an attempt to identify potential first records for the Y-K delta region. This was achieved by undertaking a search in the Arctos database (arctos.database.museum), using the spatial query tool set to the aforementioned region as a search criterion. For carabid, dytiscid and staphylinid species, this process was complemented by examining locality records in works published by Lindroth (1961), Lindroth (1963a), Lindroth (1963b), Lindroth (1966), Lindroth (1968), Lindroth (1969a), Lindroth (1969b), Larson et al. (2000), Campbell (1973), Campbell (1978), Campbell (1982), Campbell (1983), Campbell (1984), Campbell (1991) and Smetana (1971).

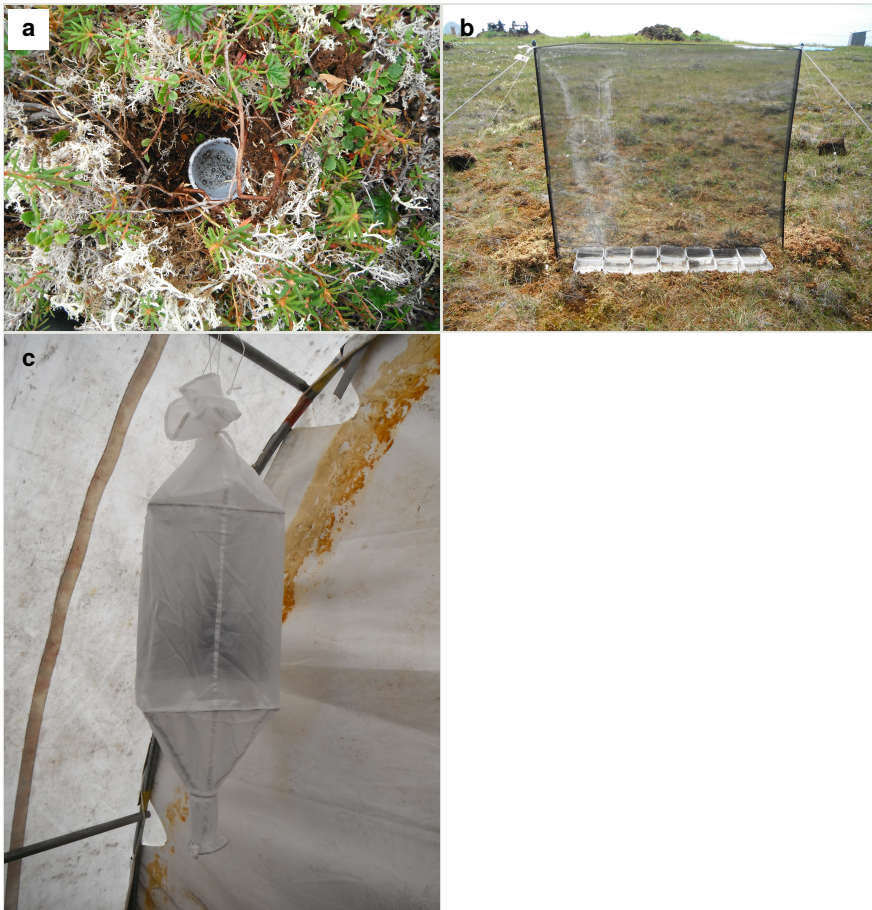


Figure 2.

Photographs of some of the traps and sampling devices employed.

a: pitfall trap [doi](#)

b: interception trap [doi](#)

c: mini-Winkler extractor (supplied by Sante Traps <http://www.santetraps.com/>). [doi](#)

Data resources

Vouchers specimens were donated to UAM, CNC and LFC and the remaining specimens are currently in the care of the first author. Data for specimens that were donated to UAM (accession: UAM-2014.20-Forbes-Ento) can be accessed through the Arctos database using the following link <http://arctos.database.museum/saved/QuinhagakColeoptera>. The full dataset is archived online and can be accessed at: doi.org/10.6084/m9.figshare.5630296.v1.

Result & Discussion

This survey recovered a total of 500 beetle specimens belonging to 74 different taxa and spanning 15 families (Suppl. material 1, Figs 3, 4, 5). In total, 61 of the 74 taxa collected were successfully identified to species level. Of those, 50 are Holarctic in distribution, with the remaining consisting of Nearctic species. One species, *Simplocaria metallica* (Sturm), is of Holarctic distribution but considered adventive in North America (Bousquet et al. 2013), where it has been recorded from Labrador, Newfoundland, Atlantic Canada and Greenland (Majka and Langor 2011). In Alaska, it has previously been collected from St. Matthew Islands (Sikes et al. 2016), but the record from Quinhagak is the first for mainland Alaska.

Thirty-four of the identified taxa may be first records for the Y-K delta region. Many of these were collected in regions adjacent to the Y-K delta (e.g. the Seward, Alaska and Kenai peninsulas as well as central Alaska). This applies to *Notiophilus borealis* Harris, *Elaphrus lapponicus* Gyllenhal, *Hydroporus lapponum* Gyllenhal, *H. morio* Aubé, *H. striola* (Gyllenhal), *Acidota quadrata* (Zetterstedt) and *Eucnecosum* cf. *tenue* LeConte). They have probably been established in the Y-K delta for a long time, but perhaps were never collected before simply due to geographical sampling bias.

This survey also produced several records of *Amara alpina* (Paykull). This species is generally considered an indicator of cold climates in palaeo-entomological studies (Elias 2010). Seventeen specimens were collected at Quinhagak, which is characterised by a subarctic coastal climate. The nearest observational data comes from Bethel Airport (approximately 115 km northeast of Quinhagak) where mean winter (January) and summer (July) temperatures for the period 1987-2016 are -14.2 and 13.4°C respectively (NOAA 2017). Additional records in Alaska include those from St. George Island, ca. 50 km off the coast of mainland Alaska and Round Island, just 15 km south of the Y-K delta. Several records from the coast of the Y-K delta also appear in a distribution map for the species provided in Lindroth (1963a). The subfossil record suggests that the species occupied unglaciated regions of Alaska and the Yukon throughout the Quaternary (Reiss et al. 1999). Palaeo-entomological and genetic data identify this region as the principal centre-of-origin for *A. alpina* and other arctic and subarctic species that dispersed throughout northern areas of North America following the last glacial maximum (Ashworth 1996, Schwert and Ashworth 1988, Reiss et al. 1999).



Figure 3.

Photographs of some of the beetle species identified from Quingahak.

a: *Carabus maeander* [doi](#)

b: *Diacheila polita* [doi](#)

c: *Elaphrus trossulus* [doi](#)

d: *Agonum quinquepunctatum* [doi](#)

e: *Pterostichus adstrictus* [doi](#)

f: *Thanatophilus sagax* [doi](#)

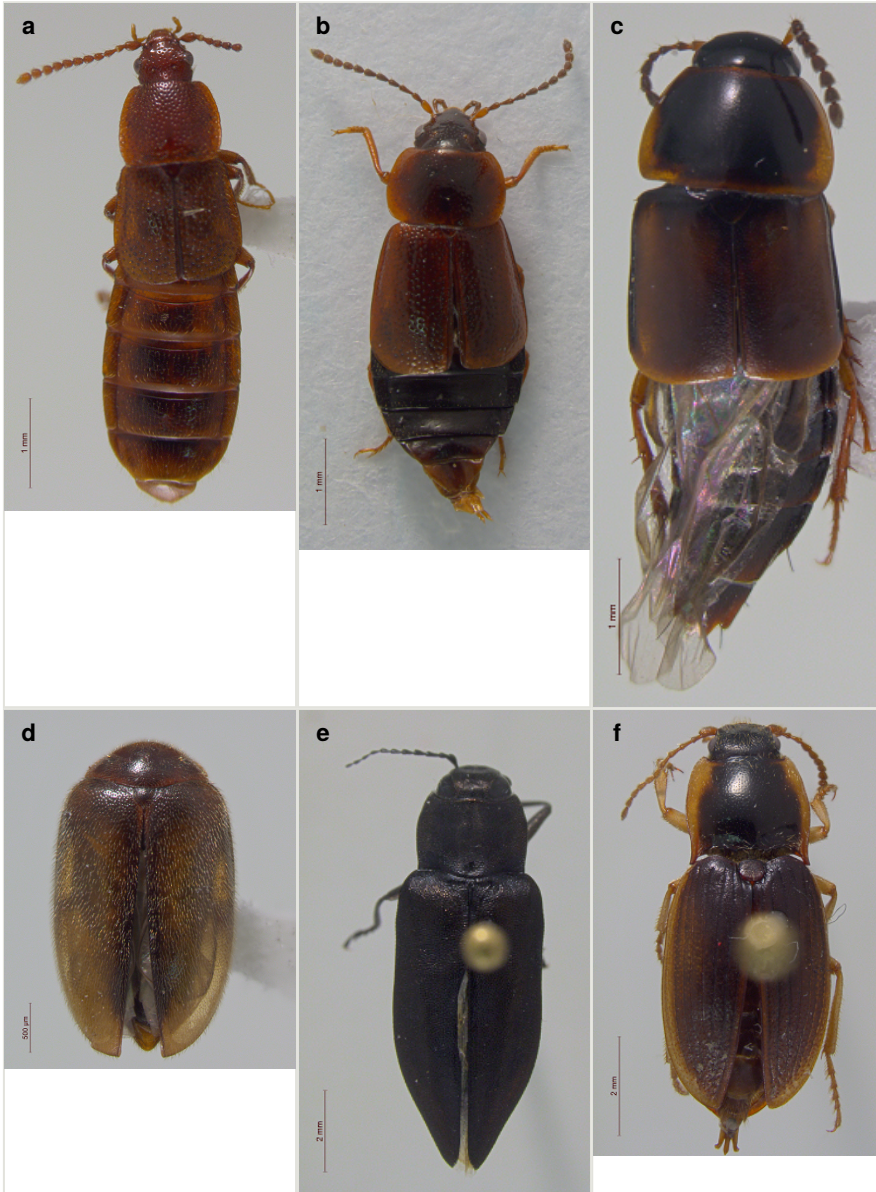


Figure 4.

Photographs of some of the beetle species identified from Quingahak (continued).

a: *Acidota quadrata* [doi](#)

b: *Olophrum latum* [doi](#)

c: *Tachinus frigidus* [doi](#)

d: *Cyphon variabilis* [doi](#)

e: *Melanophila acuminata* [doi](#)

f: *Hypolithus littoralis* [doi](#)



Figure 5. [doi](#)

Photographs of some of the beetle species identified from Quingahak (continued). *Plateumaris flavipes*

Three dytiscid specimens were identified as *Ilybius angustior* (Gyllenhal) complex. These appear to be closely related to the species *I. angustior*, a Holarctic species occurring in still water with abundant vegetation (Larson et al. 2000). However, the Quingahak specimens differ in size and colour as well as in the shape of the male metatarsal claws and aedeagus (according to Larson, personal communication, 2016).

Ecological grouping of taxa

Each identified taxon has been classified into an ecological group (Fig. 6). The 'Xeric' group contains ground beetle species that prefer dry conditions and live in the open, on ground with little to no vegetation cover. Taxa that are typical of mesic tundra habitats, which encompasses the shrub tundra but also moderately moist areas of the open tundra, have been attributed to the 'Mesic' group. This includes members of the subgenus *Cryobius* and rove beetles such as *Eucnecosum* spp. This group is dominant in this assemblage, totalling about half the total beetle specimens captured Fig. 7. Beetles preferring wet habitats and the banks of lakes or rivers were placed in the group 'Hygro-riparian', which includes several carabids and rove beetles, but also the scirtid *Cyphon variabilis* (Thunberg) and the brachycerid *Notaris aethiops* (Fabricius). The elaterid *Hypolithus littoralis* Eschscholtz occurs on ocean beaches and is the only species attributed to the group 'seashore-associated'. The 'Aquatic' group contains the eight predacious scavengers beetle taxa identified in this study. Most aleocharines have been placed in the group 'In decomposing matter', alongside other rove beetles as well as mycetophagous (e.g. *Atomaria* sp. and *Corticaria* sp.) and carrion beetles (*Colon politum* Peck & Stephan, *Catops alpinus* Gyllenhal, *Thanatophilus lapponicus* (Herbst) and *T. sagax* (Mannerheim)). The click beetle *Neohypdonus restrictulus* (Mannerheim) was also placed in this group as it is believed to be omnivorous, feeding on decaying animal and

plant matter (DSS, unpublished data). The 'Plant-associated' group includes taxa that feed directly on plants, but also the predator *Coccinella trifasciata perplexa* Mulsant, which preys on arthropods closely associated with plants (cf. Matthews 1983).

<p>Xeric</p> <p><i>Notiophilus borealis</i> <i>Bembidion grajii</i> <i>Dicheiirichus (T.) cognatus</i> <i>Amara patruelis</i> <i>Amara alpina</i></p>	<p>Hygro-riparian</p> <p><i>Carabus maeander</i> <i>Elaphrus lapponicus</i> <i>Elaphrus (Elaphrus) trossulus</i> <i>Patrobus cinctus</i> <i>Patrobus stygicus</i> <i>Agonum quinquepunctatum</i> <i>Acidota quadrata</i> <i>Olophrum latum</i> <i>Phillygria malleoides</i> <i>Gymnusa smetanai</i> <i>Gnypeta ashei</i> <i>Quedius (R.) fellmani</i> <i>Stenus sp. nr. caseyi</i> <i>Stenus immarginatus sensu Puthz</i> <i>Cyphon variabilis</i> <i>Notaris aethiops</i></p>	<p>In decomposing matter</p> <p><i>Pterostichus adstrictus</i> <i>Colan politum</i> <i>Catops alpinus</i> <i>Thanatophilus lapponicus</i> <i>Thanatophilus sagax</i> <i>Ischnosoma longicorne</i> <i>Tachinus frigidus</i> <i>Aleochara (C.) suffusa</i> <i>Atheta (s. str.) graminicola</i> <i>Atheta (s. str.) sp.</i> <i>Dimetrota sp.</i> <i>Boreophilia caseyi</i> <i>Boreophilia cf. islandica</i> <i>Boreophilia subplana</i> <i>Liogluta (L.) granulosa</i> <i>Liogluta sp.</i> <i>Lypaglossa angularis angularis</i> <i>Lypaglossa angularis</i> <i>Athetini indet.</i> <i>Oxypodini indet.</i> <i>Quedius (R.) frigidus</i> <i>Veraphis sp.</i> <i>Neohypnoides restrictulus</i> <i>Atomaria sp.</i> <i>Corticaria sp.</i></p>
<p>Mesic</p> <p><i>Carabus truncatellus</i> <i>Pterostichus (C.) brevicornis brevicornis</i> <i>Pterostichus (C.) brevicornis group</i> <i>Pterostichus (C.) pinguedineus</i> <i>Pterostichus (C.) similis</i> <i>Pterostichus (C.) ventricosus ventricosus</i> <i>Pterostichus agonus</i> <i>Diachella polita</i> <i>Eucnecosum brachypterum</i> <i>Eucnecosum brunnescens</i> <i>Eucnecosum cf. tenue</i> <i>Holoboreaphilus nordenskioldi</i> <i>Pycnoglypta heydeni</i></p>	<p>Seashore-associated</p> <p><i>Hypolithus littoralis</i></p>	
<p>Plant-associated</p> <p><i>Melanophila acuminata</i> <i>Simplocaria metallica</i> <i>Plateumaris flavipes</i> <i>Coccinella trifasciata perplexa</i> <i>Dorytomus leucophyllus</i> <i>Dorytomus rufulus</i></p>	<p>Aquatic</p> <p><i>Hydroporus lapponum</i> <i>Hydroporus morio</i> <i>Hydroporus notabilis</i> <i>Hydroporus striola</i> <i>Agabus velox</i> <i>Ilybius angustior complex</i> <i>Ilybius picipes</i> <i>Ilybius vittiger</i></p>	

Figure 6. [doi](#)

Grouping of identified taxa according to their habitat/ecology. In red font are those taxa that belong to mesic, hygrophilous and riparian environments, but that are known to be associated with microhabitats available in decaying plant matter (e.g. leaf litter, floor debris).

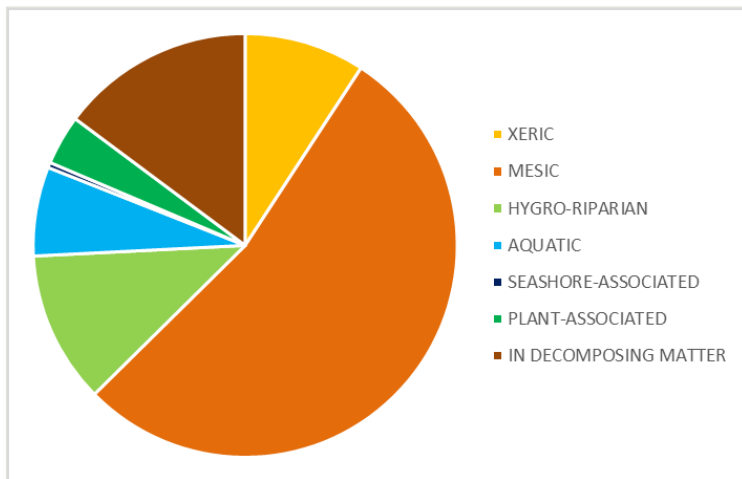


Figure 7. [doi](#)

Relative proportion of each ecological group (as defined in Figure 6) represented in the sample. Percentages were calculated on the basis of the total number of Coleoptera within the sample.

Taxa that are typical of mesic to wet tundra habitats and which occur on both sides of the Bering and Chukchi Seas, are the most represented in this survey (Fig. 7). About a third of the species identified have been recorded from other late Quaternary sites also located in south-western Alaska, both inland and just west of the Alaska Peninsula (Elias 1992). The proportion occupied by hygrophilous and riparian beetles is, however, surprisingly limited in view of the abundance of water in the area. This is no doubt in part due to the fact that sampling took place during the driest period of the year, although sampling bias probably also played a role, given that mesic tundra habitats were more easily accessible and sampled than wetter ones. Notable absentees from this study include several *Stenus* species, which are common in other subfossil assemblages of Alaska and Siberia (e.g. Elias 1992, Elias et al. 2000, Elias et al. 1996). Here, only two specimens were collected. Many *Stenus* species are riparian, hunting prey at the muddy banks of ponds or streams and are better retrieved through hand collection – by lifting rocks or streamside washing, for example. Diverse *Stenus* species probably occur around the Nunalleq archaeological site, but unfortunately, their niche(s) seem to have escaped the authors' attention. It is also interesting that the only *Bembidion* species identified in this survey is described by Lindroth as 'not at all riparian' (Lindroth 1963b), given that the majority of species from this genus live close to water.

Many of the taxa included in the 'Xeric' and 'Mesic' groups are typical of tundra environments, but appear to exploit niches provided by decomposing organic matter, for example rotting wood, leaf litter and flood debris (Fig. 6). This poses an interesting problem for archaeo-entomological interpretations. The most common aim of such studies is to produce high (spatial and temporal) resolution reconstructions of ecological conditions and activity areas within settlements. In this context, the importance of a species' microhabitat preference (e.g. decaying vegetation) may outweigh that of its macrohabitat (e.g. tundra). Human settlements have been shown to generate an abundance of nutrient-rich ecological niches which is unmatched in natural situations (Forbes et al. 2014, Forbes et al. 2017). Indeed, subfossil insect faunas extracted from floors and middens on archaeological sites are typically dominated by predators and mould-feeders in decomposing vegetation, many of which are known to occupy similar niches in forest litter, mammal and bird nests and burrows or tree hollows (Kenward and Allison 1994). This is the case not only for permanent urban and rural settlements, but also for the seasonally-occupied houses of arctic and subarctic foragers, which are strongly dominated by taxa such as *Aleocharinae* indet., *Eucnecosum* spp. and *Pycnoglypta* spp. (Forbes et al. 2017). It is therefore likely that tundra species known to inhabit decomposing matter in natural situations were able to colonise the nutrient-rich niches available inside and around sod dwellings in the past. It is worth noting that this survey collected several species typical of tundra environments (e.g. *Carabus truncaticollis* Eschscholtz, *Diacheila polita* (Faldermann), *Pterostichus* (*Cryobius*) *similis* Mannerheim and *Pterostichus agonus* Horn) in synanthropic situations. Future archaeo-entomological analyses at Nunalleq will hopefully clarify the significance of these beetles in the reconstruction of past foraging lifeways and ecology.

Acknowledgements

VF would like to thank Qanirtuuq inc. for hospitality in Quinhagak, logistical support and for authorising this survey on their land, as well as Paul Ledger, Roy Mark and Rick Knecht for assistance during fieldwork. Patrice Bouchard, Yves Bousquet, Anthony Davies, Hume Douglas, Jan Klimaszewski, Dave Larson, George Pelletier, Karine Savard, Aleš Smetana and Margaret K. Thayer provided invaluable help with identifications and Caroline Bourdon helped with microdissections.

Funding program

This project received funding from the European Union's Horizon 2020 research and innovation programme under the Marie Skłodowska-Curie grant agreement No 703322. Fieldwork was funded through a grant from the *Arts and Humanities Research Council* of the United Kingdom (To R. Knecht, K. Britton & Charlotta Hillerdal, University of Aberdeen, AH/K006029/1).

References

- Anderson RS, Peck SB (1985) The Carrion Beetles of Canada and Alaska. Coleoptera: Silphidae and Agyrtidae . Agriculture Canada, Ottawa.
- Arnett RH, Thomas MC (2001) American Beetles, Volume 1: Archostemata, Myxophaga, Adephaga, Polyphaga: Staphyliniformia . CRC Press, Boca Raton.
- Arnett RHJ, Thomas MC, Skelley PE, Frank JH (2002) American Beetles, Volume 2: Scarabaeoidea through Curculionoidea . CRC Press, Boca Raton.
- Ashworth A (1996) The Response of Arctic Carabidae (Coleoptera) to Climate Change Based on the Fossil Record of the Quaternary Period. *Annales Zoologici Fennici* 33: 125-131.
- Askevold IS (1991) Classification, reconstructed phylogeny, and geographic history of the New World members of *Plateumaris* Thomson, 1859 (Coleoptera: Chrysomelidae: Donaciinae). *Memoirs of the Entomological Society of Canada* 123 (Supplement S157): 5-175. <https://doi.org/10.4039/entm123157v>
- Ball GE (1966) A Revision of the North American Species of the subgenus *Cryobius* Chaudoir (*Pterostichus*, Carabidae, Coleoptera). *Entomologiska Sällskapet, Lund*.
- Bigelow NE, Edwards ME, Elias SA, Hamilton TD, Schweger CE (2014) Tundra and boreal forest of interior Alaska during terminal MIS 6 and MIS 5e. *Vegetation History and Archaeobotany* 23: 177-193. <https://doi.org/10.1007/s00334-013-0425-z>
- Bousquet Y (1990) Beetles Associated with Stored Products in Canada. An Identification Guide. Ministry of Supply and Services, Ottawa.
- Bousquet Y (2010) Illustrated Identification Guide to Adults and Larvae of Northeastern North American Ground Beetles (Coleoptera: Carabidae). Pensoft, Sofia-Moscow.
- Bousquet Y, Bouchard P, Davies AE, Sikes D (2013) Checklist of Beetles (Coleoptera) of Canada and Alaska. Second Edition. Pensoft, Sofia-Moscow.

- Bright DE (1987) The Metallic Wood-boring Beetles of Canada and Alaska. Coleoptera: Buprestidae. Agriculture Canada, Ottawa.
- Buchanan LL (1927) A short review of *Notaris* (Coleoptera: Curculionidae). Bulletin of the Brooklyn Entomological Society 12: 36-40.
- Buckland PI (2009) The Bugs Coleoptera Ecology Package (BugsCEP). The Development and Implementation of a Software for Palaeoenvironmental and palaeoclimatological Research. VDM Verlag Dr. Müller Aktiengesellschaft & Co, Saarbrücken.
- Campbell JM (1973) A revision of the genus *Tachinus* (Coleoptera: Staphylinidae) of North and Central America. Memoirs of the Entomological Society of Canada 105 (S90): 7-137. <https://doi.org/10.4039/entm10590fv>
- Campbell JM (1978) A revision of the North American Omaliinae (Coleoptera: Staphylinidae). 1. The genera *Haida* Keen, *Pseudohaida* Hatch, and *Eudectoides* new genus. Memoirs of the Entomological Society of Canada 106: 1-20. <https://doi.org/10.4039/entm111106fv>
- Campbell JM (1982) A revision of the North American Omaliinae (Coleoptera: Staphylinidae). 3. The genus *Acidota* Stephens. The Canadian Entomologist 114 (11): 1003-1029. <https://doi.org/10.4039/Ent1141003-11>
- Campbell JM (1983) A revision of the North American Omaliinae (Coleoptera: Staphylinidae) The genus *Olophrum* Erichson. The Canadian Entomologist 115 (6): 577-622. <https://doi.org/10.4039/Ent115577-6>
- Campbell JM (1984) A revision of the North American Omaliinae (Coleoptera: Staphylinidae). The genera *Arpedium* Erichson and *Eucnecosum* Reitter. The Canadian Entomologist 116: 487-527. <https://doi.org/10.4039/Ent116487-4>
- Campbell JM (1991) A revision of the genera *Mycetoporus* Mannerheim and *Ischnosoma* Stephens (Coleoptera: Staphylinidae: Tachyporinae) of North and Central America. Memoirs of the Entomological Society of Canada 156.
- Casey TL (1884) Revision of the Stenini of America north of Mexico insects of the family, Staphylinidae, order Coleoptera . Collins, Philadelphia.
- Collet DM (2008) Insects of South-Central Alaska. Kenai Watershed Forum, Soldotna.
- Downie NM, Arnett RH (1994) The Beetles of Northeastern North America. Volume I: Introduction; Suborders Archaeostemata, Adephaga, and Polyphaga, through Superfamily Cantharoidea . Sandhill Crane Press, Gainesville.
- Downie NM, Arnett RH (1996) The Beetles of Northeastern North America. Volume II: Polyphaga: Series Bostrichiformia through Curculionoidea . Sandhill Crane Press, Gainesville.
- Elias SA (1992) Late Quaternary beetle faunas of southwestern Alaska: evidence of a refugium for mesic and hygrophilous species. Arctic and Alpine Research 24 (2): 133-144. <https://doi.org/10.2307/1551533>
- Elias SA, Short SA (1992) Paleocology of an interglacial peat deposit, Nuyakuk, Southwestern Alaska, U.S.A. Géographie Physique et Quaternaire 46 (1): 85-96. <https://doi.org/10.7202/032890ar>
- Elias SA, Short SK, Phillips L (1992) Paleocology of late-glacial peats from the Bering Land Bridge, Chukchi Sea shelf region, Northwestern Alaska. Quaternary Research 38: 371-378. [https://doi.org/10.1016/0033-5894\(92\)90045-K](https://doi.org/10.1016/0033-5894(92)90045-K)
- Elias SA, Short SK, Waythomas CF (1996) Late Quaternary environments, Denali National Park and Preserve, Alaska. Arctic 49 (3): 292-305.

- Elias SA, Short SK, Birks HH (1997) Late Wisconsin environments of the Bering Land Bridge. *Palaeogeography, Palaeoclimatology, Palaeoecology* 136: 293-308. [https://doi.org/10.1016/S0031-0182\(97\)00038-2](https://doi.org/10.1016/S0031-0182(97)00038-2)
- Elias SA, Andrews JT, Anderson KH (1999) Insights on the climatic constraints on the beetle fauna of coastal Alaska, U.S.A., derived from the mutual climatic range method of paleoclimate reconstruction. *Arctic, Antarctic, and Alpine Research* 31 (1): 94-98. <https://doi.org/10.2307/1552626>
- Elias SA (2000) Late Pleistocene climates of Beringia, based on analysis of fossil beetles. *Quaternary Research* 53: 229-235. <https://doi.org/10.1006/qres.1999.2093>
- Elias SA, Berman D, Alfimov A (2000) Late Pleistocene beetle faunas of Beringia: where east met west. *Journal of Biogeography* 27: 1349-1363. <https://doi.org/10.1046/j.1365-2699.2000.00503.x>
- Elias SA (2001) Mutual climatic range reconstructions of seasonal temperatures based on Late-Pleistocene fossil beetle assemblages in Eastern Beringia. *Quaternary Science Reviews* 20: 77-91. [https://doi.org/10.1016/S0277-3791\(00\)00130-X](https://doi.org/10.1016/S0277-3791(00)00130-X)
- Elias SA, Matthews JV (2002) Arctic North American seasonal temperatures from the latest Miocene to the early Pleistocene, based on mutual climatic range analysis of fossil beetle assemblages. *Canadian Journal of Earth Sciences* 39: 911-920. <https://doi.org/10.1139/e01-096>
- Elias SA (2010) *Advances in Quaternary Entomology*. Elsevier, Amsterdam.
- Erwin TL (2007) *A Treatise on the Western Hemisphere Caraboidea (Coleoptera). Their Classification, Distributions, and Ways of Life. Volume 1. Trachypachidae, Carabidae – Nebriiformes 1*. Pensoft, Sofia-Moscow.
- Forbes V, Dussault F, Bain A (2014) Archaeoentomological Research in the North Atlantic: Past, Present, and Future. *Journal of the North Atlantic* 26: 1-24.
- Forbes V, Britton K, Knecht R (2015) Preliminary archaeoentomological analyses of permafrost-preserved cultural layers from the pre-contact Yup'ik Eskimo site of Nunalleq, Alaska: Implications, potential and methodological considerations. *Environmental Archaeology* 20 (2): 158-167. <https://doi.org/10.1179/1749631414Y.0000000037>
- Forbes V, Dugmore AJ, Ólafsson E (2016) The Life and Death of Barn Beetles: Faunas from Manure and Stored Hay inside Farm Buildings in Northern Iceland. *Ecological Entomology* 41: 480-499. <https://doi.org/10.1111/een.12321>
- Forbes V, Dussault F, Lalonde O, Bain A (2017) Coléoptères, poux et puces subfossiles provenant d'habitats de chasseurs-cueilleurs: l'apport des recherches archéoentomologiques dans le nord circumpolaire. *Recherches Amérindiennes au Québec*.
- Gordon RD (1985) The Coccinellidae (Coleoptera) of America North of Mexico. *Journal of New York Entomological Society* 93 (1): 1-912.
- Gusarov VI (2004) A revision of the genus *Lypoglossa* Fenyés, 1918 (Coleoptera: Staphylinidae: Aleocharinae). *Zootaxa* 747: 1-36.
- Hatch MH (1971) *The Beetles of the Pacific Northwest. Part V: Rhipiceroidea, Sternoxi, Phytophagci, Rhynchophora, and Lamellicornia*. University of Washington Press, Seattle.
- Hayford BL, Newell RL, Crete ZJ (2014) Survey of Chironomidae (Insecta: Diptera) from the Kuskokwim River watershed in Western Alaska. *Western North American Naturalist* 74 (2): 208-215. <https://doi.org/10.3398/064.074.0206>

- Hicks EA (1959) Check-List and Bibliography on the Occurrence of Insects in Birds' Nests. Iowa State College Press, Ames.
- Horn GH (1880) Synopsis of the Dascyllidæ of the United States. Transactions of the American Entomological Society and Proceedings of the Entomological Section of the Academy of Natural Sciences 8 (1/2): 76-114. <https://doi.org/10.2307/25076386>
- Johnson PJ (1991) Taxonomic notes, new records, and a key to the adults of North American Byrrhidae (Coleoptera). Proceedings of the Entomological Society of Washington 93 (2): 322-332.
- Kenward H (2009) Northern Regional Review of Environmental Archaeology: Invertebrates in Archaeology in the North of England. English Heritage, Portsmouth.
- Kenward HK, Allison E (1994) Rural Origins of the Urban Insect Fauna. In: Kenward HK, Allison E (Eds) Urban-Rural Connexions: Perspectives from Environmental Archaeology. Oxbow Books, Oxford.
- Klimaszewski J, Savard K, Pelletier G, Webster R (2008) Species review of the genus *Gnypeta* Thomson from Canada, Alaska and Greenland (Coleoptera, Staphylinidae, Aleocharinae): systematics, bionomics and distribution. ZooKeys 2: 11-84. <https://doi.org/10.3897/zookeys.2.4>
- Klimaszewski J, Langor D, Pelletier G, Bourdon C, Perdereau L (2011) Aleocharine Beetles (Coleoptera, Staphylinidae) of the Province of Newfoundland and Labrador, Canada. Pensoft, Sofia-Moscow.
- Klimaszewski J, Webster RP, Langor DW, Sikes D, Bourdon C, Godin B, Ernst C (2016) A review of Canadian and Alaskan species of the genus *Liogluta* Thomson, and descriptions of three new species (Coleoptera, Staphylinidae, Aleocharinae). ZooKeys 573: 217-256. <https://doi.org/10.3897/zookeys.573.7878>
- Laroche A, Larivière MC (2003) A Natural History of the Ground Beetles (Coleoptera: Carabidae) of America north of Mexico. Pensoft, Sofia-Moscow.
- Larson DJ, Alarie Y, Roughley RE (2000) Predaceous Diving Beetles (Coleoptera: Dytiscidae) of the Nearctic Region, with Emphasis on the Fauna of Canada and Alaska. NRN Research Press, Ottawa.
- Lindroth CH (1961) The ground beetles (Carabidae, excl. Cicindellidae) of Canada and Alaska, Part 2. Opuscula Entomologica Supplementum 20: 1-200.
- Lindroth CH (1963a) The faunal history of Newfoundland illustrated by carabid beetles. Opuscula Entomologica Supplementum 23: 1-112.
- Lindroth CH (1963b) The ground Beetles (Carabidae, excl. Cicindellidae) of Canada and Alaska, Part 3. Opuscula Entomologica Supplementum 24: 201-408.
- Lindroth CH (1966) The ground beetles (Carabidae, excl. Cicindellidae) of Canada and Alaska, Part 4. Opuscula Entomologica Supplementum 29: 409-648.
- Lindroth CH (1968) The ground beetles (Carabidae, excl. Cicindellidae) of Canada and Alaska, Part 5. Opuscula Entomologica Supplementum 33: 649-944.
- Lindroth CH (1969a) The ground beetles (Carabidae, excl. Cicindellidae) of Canada and Alaska, Part 1. Opuscula Entomologica Supplementum 35: 1-48.
- Lindroth CH (1969b) The ground beetles (Carabidae, excl. Cicindellidae) of Canada and Alaska, Part 6. Opuscula Entomologica Supplementum 34: 945-1192.
- Lohse GA, Klimaszewski J, Smetana A (1990) Revision of Arctic Aleocharinae of North America (Coleoptera: Staphylinidae). The Coleopterists Bulletin 44 (2): 121-202.

- Majka CG, Langor D (2008) The Leiodidae (Coleoptera) of Atlantic Canada: new records, faunal composition, and zoogeography. *ZooKeys* 2: 357-402. <https://doi.org/10.3897/zookeys.2.56>
- Majka CG, Langor D (2011) The Byrrhidae (Coleoptera) of Atlantic Canada. *Journal of the Acadian Entomological Society* 7: 32-43.
- Matthews JV (1983) A method for comparison of northern fossil insect assemblages. *Géographie Physique et Quaternaire* 37 (3): 297-306. <https://doi.org/10.7202/032524ar>
- Matthews JV, Westgate JA, Ovenden L, Carter LD, Fouch T (2003) Stratigraphy, fossils, and age of sediments at the upper pit of the Lost Chicken gold mine: new information on the late Pliocene environment of east central Alaska. *Quaternary Research* 60: 9-18. [https://doi.org/10.1016/S0033-5894\(03\)00087-5](https://doi.org/10.1016/S0033-5894(03)00087-5)
- NOAA (2017) <https://www.ncdc.noaa.gov/cdo-web/datasets/GSOM/stations/GHCND:USW00026615/detail>
- O'Brien CW (1970) A Taxonomic Revision of the Weevil Genus *Dorytomus* in North America (Coleoptera: Curculionidae). University of Los Angeles California Press, Berkeley.
- Ratcliffe BC (1996) The carrion beetles (Coleoptera: Silphidae) of Nebraska. *Bulletin of the University of Nebraska State Museum, Lincoln*.
- Reiss R, Ashworth A, Schwert D (1999) Molecular Genetic Evidence for the Post-Pleistocene Divergence of Populations of the Arctic-Alpine Ground Beetle *Amara alpina* (Paykull) (Coleoptera: Carabidae). *Journal of Biogeography* 26 (4): 785-794. <https://doi.org/10.1046/j.1365-2699.1999.00321.x>
- Reyes A, Jensen B, Zazula G, Ager T, Kuzmina S, Farge CL, Froese D (2010) A late-Middle Pleistocene (Marine Isotope Stage 6) vegetated surface buried by Old Crow tephra at the Palisades, interior Alaska. *Quaternary Science Reviews* 29: 801-811. <https://doi.org/10.1016/j.quascirev.2009.12.003>
- Reyes AV, Zazula GD, Kuzmina S, Ager TA, Froese DG (2011) Identification of last interglacial deposits in eastern Beringia: a cautionary note from the Palisades, interior Alaska. *Journal of Quaternary Science* 26 (3): 345-353. <https://doi.org/10.1002/jqs.1464>
- Schwert D, Ashworth A (1988) Late Quaternary History of the Northern Beetle Fauna of North America: A Synthesis of Fossil and Distributional Evidence. *Memoirs of the Entomological Society of Canada* 144: 93-107. <https://doi.org/10.4039/entm120144093-1>
- Shavrin AV (2016) A review of the genus *Pycnoglypta* Thomson, 1858 (Staphylinidae, Omaliinae, Omaliini) with notes on related taxa. *Zootaxa* 4077 (1): 1-94. <https://doi.org/10.11646/zootaxa.4077.1.1>
- Sikes DS, Bogan D, Bickford C, Slowik J, Peek S (2016) Non-marine invertebrates of the St. Matthew Islands, Bering Sea, Alaska. *AKES Newsletter* 9 (1): 11-20.
- Smetana A (1971) Revision of the tribe Quediini of North America north of Mexico (Coleoptera: Staphylinidae). 79. *Memoirs of the Entomological Society of Canada*, Ottawa.
- Wells SA (1991) Two new species of *Neohypdonus* (Coleoptera: Elateridae) from North America with a key to Nearctic species. *Entomological News* 102 (2): 73-78.
- Wilson MJ, Elias SA (1986) Paleoecological significance of Holocene insect fossil assemblages from the north coast of Alaska. *Arctic* 39 (2): 150-157.
- Wooller MJ, Zazula GD, Blinnikov M, Gaglioti BV, Bigelow NH, Sanborn P, Kuzmina S, Farge CL (2011) The detailed paleoecology of a mid-Wisconsinan interstadial (ca. 32

000 14C a BP) vegetation surface from interior Alaska. *Journal of Quaternary Science* 26 (7): 746-756. <https://doi.org/10.1002/jqs.1497>

Supplementary material

Suppl. material 1: List of beetle taxa identified at Quinhagak, with a summary of their habitats/ecology [doi](#)

Authors: Veronique Forbes

Data type: Occurrences and habitat data

Brief description: List of beetle taxa identified at Nunalleq, with a summary of their habitats/ecology. Ticked (✓) boxes indicate habitat records collected as part of this survey, those marked with an 'x' represent habitat records identified from the literature.

Ecology and habitat abbreviations: BG = bare ground; BP = bogs, peaty soils/wet meadows; CA = carrion; CG = coastal grassland; DS = disturbed/synanthropic habitats; DT = dry tundra/heath; DU = dung; DV = decaying vegetal matter; F = fungi; H = hygrophilous; MO = moss; MT = mesic tundra; NB = nests and burrows; O = open ground; R= riparian; SB= seashore, beach; SW= standing water; TV = thin/sparse vegetation; WB = wood/bark; WL = forest, woodland, scrubs; WT = wet tundra; X = xeric habitats.

The 'ID' column designates the determiner for each taxa (PB = Patrice Bouchard; YB = Yves Bousquet; AD = Anthony Davies; HD = Hume Douglas; VF = Véronique Forbes; JK = Jan Klimaszewski; DL = Dave Larson; DS = Derek Sikes; AS = Aleš Smetana; MKT = Margaret K. Thayer).

The 'DIS' column details each taxon's global distribution (Ho = Holarctic; Ne = Nearctic; Ad = adventive to North America).

Filename: Table 2_List of beetle taxa from Quinhagak_final.xlsx - [Download file](#) (16.81 kb)