

# IMPLEMENTATION OF THE OPEN SOURCE VIRTUALIZATION TECHNOLOGIES IN CLOUD COMPUTING

Mohammad Mamun Or Rashid, M. Masud Rana and Jugal Krishna Das

Department of Computer Science and Engineering, Jahangirnagar University Savar,  
Dhaka, Bangladesh

## **ABSTRACT**

*The “Virtualization and Cloud Computing” is a recent buzzword in the digital world. Behind this fancy poetic phrase there lies a true picture of future computing for both in technical and social perspective. Though the “Virtualization and Cloud Computing are recent but the idea of centralizing computation and storage in distributed data centres maintained by any third party companies is not new but it came in way back in 1990s along with distributed computing approaches like grid computing, Clustering and Network load Balancing. Cloud computing provide IT as a service to the users on-demand basis. This service has greater flexibility, availability, reliability and scalability with utility computing model. This new concept of computing has an immense potential in it to be used in the field of e-governance and in the overall IT development perspective in developing countries like Bangladesh.*

## **KEYWORDS**

*Cloud Computing, Virtualization, Open Source Technology.*

## **1. INTRODUCTION**

Administrators usually use lots of servers with heavy hardware to keep their service accessible, available for the authenticated users. As days passes by concernment of new services increases which require more hardware, more effort from IT administrators. There is another issue of capacity (Hardware as well as storage and networking) which always increases day by day. Moreover sometime we need to upgrade old running servers as their resources have been occupied fully. On that case we need to buy new servers, install those services on that server and finally migrate to the service on it. Cloud computing focus on what IT always needs: a way to increase capacity on the fly without investing in new infrastructure. Cloud computing also encompasses any subscription-based, user-based, services-based or pay-per-use service that in real time over the internet extends its existing capabilities.

### **1.1 DEFINITION OF CLOUD COMPUTING**

Cloud computing is a model for enabling convenient, on-demand network access to a shared pool of configurable computing resources (e.g., networks, servers, storage, applications and services) that can be rapidly provisioned and released with minimal management effort on service provider interaction [1].

## 1.2 BENEFITS OF CLOUD COMPUTING

**Flexibility** – Every day organization demands increase and Scale up or down to meet their requirements. Today's economy, flexibility is the key. One can adjust his IT expenditures to meet your organization's immediate needs.

**Security** – Cloud service assured that your data in the cloud is much more secure than in your small unsecured server room.

**Capacity** –With cloud computing, Capacity always increase and it is no longer an issue. Now, focus on how the solution will help in further mission. The IT piece belongs to somebody else.

**Cost** – Cloud and Virtualization technology reduce your all maintenance fees. There is no more servers, software, and update fees. Many of the hidden costs typically associated with software implementation, customization, hardware, maintenance, and training are rolled into a transparent subscription fee.

## 1.3 VIRTUALIZATION

Virtualization can be practical very broadly to just about everything you can imagine including processor, memory, networks, storage, operating systems, and applications. Three characteristics of virtualization technology make it ideal for cloud computing:

**Partitioning:** In virtualization technology, single physical server or system can use partitioning to support many different applications and operating systems (OS).

**Isolation:** In cloud computing, each virtual machine is isolated and protected from crashes or viruses in the other machines. What makes virtualization so important for the cloud is that it decouples the software from the hardware.

**Encapsulation:** Encapsulation can protect each application so that it doesn't interfere with other applications. By using encapsulation, each virtual machine stored as a single file, making it easy to identify and present to other applications and software. To understand how virtualization helps with cloud computing, we must understand its many forms. In all cases, a single resource actually emulates or imitates other resources. Here are some examples:

**Virtual memory:** Every disk has a lot more space than memory. PCs can use virtual memory to borrow extra memory from the hard disk. Although virtual disks are slower than real memory, if managed right, the substitution works surprisingly well.

**Software:** Virtualization software is available which can emulate an entire computer. A virtual single computer can perform as though it were actually more than computers. This kind of software might be able to move from a data centre with thousands of servers. To manage virtualization in cloud computing, most of companies are using different hypervisors. Because in cloud computing we need different operating environments, the hypervisor becomes an ideal delivery mechanism by allowing same application on lots of different systems. Hypervisors can load multiple operating systems in single node; they are a very practical way of getting things virtualized quickly and efficiently. Let's try to draw a picture on above statement.

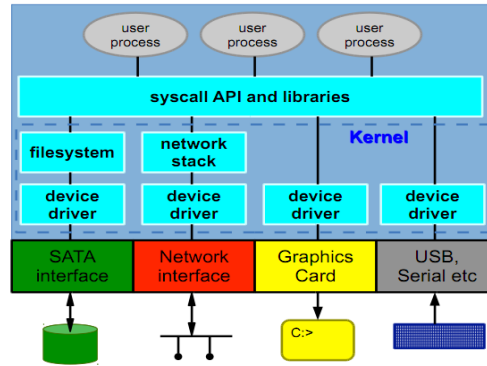


Figure 1.1: A normal Workstation / Computer

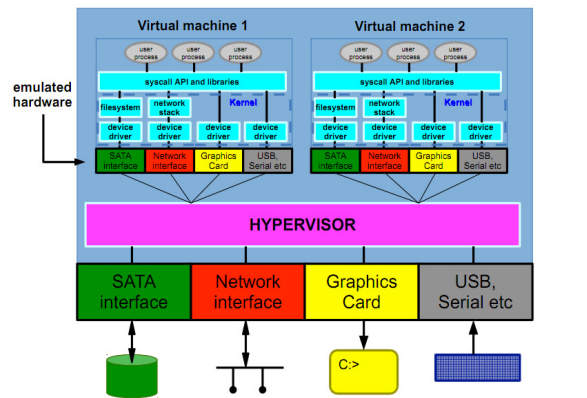


Figure 1.2: Workstation using Hypervisor

### 1.4 HYPERVISOR

The evolution of virtualization greatly revolves around one piece of very important software that loads the whole virtual system. This is the hypervisor. As an integral component of computer node, this software allows all physical devices to share their all resources (Processor, RAM, Disk, Network) amongst virtual machines running as guests on top of that physical hardware devices.

### 1.5 RELATED WORK

Open source Virtualization technologies in Cloud computing provided this paper on multiple Node to measure its performance [2], [3], [4] and [5]. In this paper, we extend this evaluation to include Master Node as another Instance in virtualization platform, and test both under different scenarios including multiple VMs and multi-tiered systems. We have also working with oVirt in Virtualization that implemented with Centos 6. We created three Hypervisor (Node) and One Manager. There are 76 Virtual Machine running where most of them application Server and 4 Database server with Disaster Recovery System. For Application server, We have implemented NBL(Network Load Balancer) for web services to active in service 24/7. Ganeti supports a very lightweight architecture which is very useful to start with commodity hardware. From starting a single node installation an administrator can scale out the cluster very easily. It is designed to use local storage also compatible with larger storage solutions. It has fault-tolerance as a built-in feature. In a word it is very simple to manage and maintain. Ganeti is admin centric clustering solution which is the main barrier for public cloud deployment. To the best of our knowledge,

these types of virtualization technologies have not been evaluated in the context of server clustering. Multiple Node Server consolidation using virtual containers brings new challenges and, we comprehensively evaluate two representative virtualization and cloud technologies in a number of different Node scenarios.

## 2. IMPLEMENTATION

### 2.1 SCOPE OF THIS PROJECT

In this project we used following configuration hardware.

CPU: Dual Core  
RAM: 2GB  
Storage: 140GB  
NIC: 1

We use 3 hardwares stated like above. We will use Debian GNU/Linux 7 as our base operating system and run Ganeti over the operating system using KVM as hypervisor. Later we will initiate a cluster on one physical host as a master node. We will join other nodes on that cluster. We will use a manageable switch and VLAN on it to separate our management + storage network and public facing VM network for security purpose. Later we will create VMs and check live migration, Network changes and failover scenarios.

### 2.2 SUMMARY OF THE TOPOLOGY

We will connect three commodity computers in our cluster. Each computer has a single NIC which will be logically divided by VLANs. All the computers will be connected to a trunk port of a manageable switch to accept logical network (VLAN). The management + Storage network and public network (VM) will be separated from that manageable switch. The deployment architecture and physical node connectivity has been presented below.

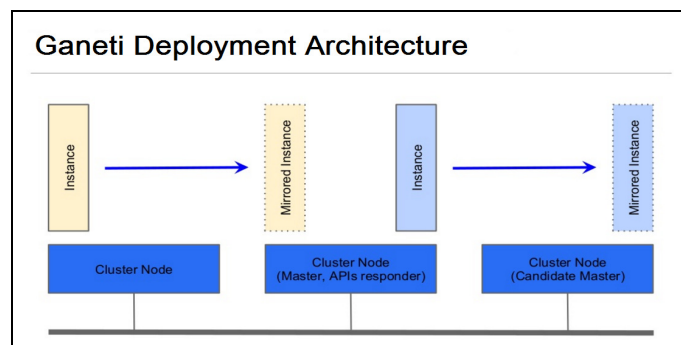


Figure2.1: Deployment Architecture

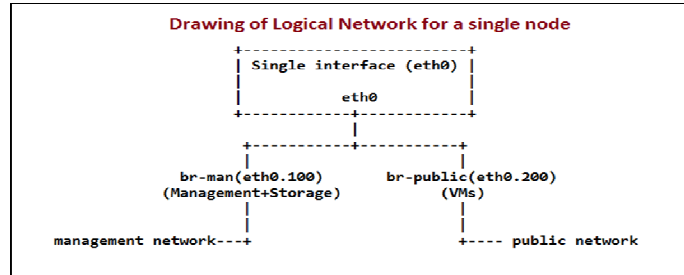


Figure 2.2: Network connectivity of a Physical Node

### 2.3 INSTALLATION OF BASE OPERATING SYSTEM

This is mandatory for all nodes.

We have installed a clean, minimal operation system as standard OS. The only requirement we need to be aware of at this stage is to partition leaving enough space for a big (minimum 10GB) LVM volume group which will then host your instance file systems, if we want to use all Ganeti features. In this case we will install the base operating system on 10GB of our storage space and remaining storage space will leave un-partitioned for LVM use. The volume group name we use will be genetic.

### 2.4 CONFIGURE THE HOSTNAME

Look at the contents of the file /etc/hostname and check it contains the fully-qualified domain name, i.e. **node1.project.edu**

Now get the system to re-read this file:

```
# hostname -F /etc/hostname
```

Also check /etc/hosts to ensure that you have the both the fully-qualified name and the short name there, pointing to the correct IP address:

```
127.0.0.1 localhost
192.168.20.222 node1.project.edu node1
```

### 2.5 CREATING LOGICAL VOLUME MANAGER

Type the following command:

```
# vgs
```

If it shows we have a volume group called 'ganeti' then skip to the next section, "Configure the Network". If the command is not found, then install the lvm2 package:

```
# apt-get install lvm2
```

Now, our host machine should have either a spare partition or a spare hard drive which we will use for LVM. If it's a second hard drive it will be /dev/vdb or /dev/sdb. Check which you have:

```

192.168.20.222 - PuTTY
root@node1:~# fdisk -l

Disk /dev/sda: 160.0 GB, 160041885696 bytes
255 heads, 63 sectors/track, 19457 cylinders, total 312581808 sectors
Units = sectors of 1 * 512 = 512 bytes
Sector size (logical/physical): 512 bytes / 512 bytes
I/O size (minimum/optimal): 512 bytes / 512 bytes
Disk identifier: 0x000e5aef

   Device   Boot      Start         End      Blocks   Id  System
/dev/sda1             2048         3905535     1951744   82  Linux swap / Solaris
/dev/sda2 *          3905536     23437311     9765888   83  Linux
/dev/sda3             23437312     312580095    144571392   83  Linux
root@node1:~#
    
```

Figure 2.3: Checking available disks

Assuming /dev/sda3 is spare; let's mark it as a physical volume for LVM:

```

# pvcreate /dev/sda3
# pvs # should show the physical volume
    
```

```

192.168.20.222 - PuTTY
root@node1:~# pvcreate /dev/sda3
Writing physical volume data to disk "/dev/sda3"
Physical volume "/dev/sda3" successfully created
root@node1:~#
    
```

Figure 2.4: Physical Volume Create

```

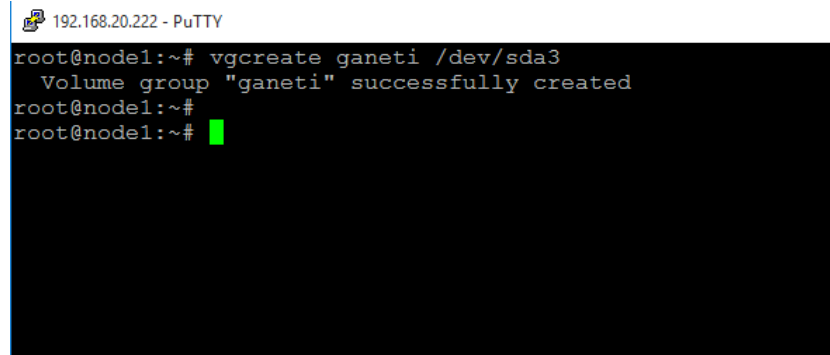
192.168.20.222 - PuTTY
root@node1:~# pvs
PV          VG      Fmt  Attr  PSize  PFree
/dev/sda3   lvm2   a--  137.87g 137.87g
root@node1:~#
    
```

Figure 2.5: Physical volume check

Now we need to create a volume group called ganeti containing just this one physical volume. (Volume groups can be extended later by adding more physical volumes)

```

# vgcreate ganeti /dev/vdb
# vgs
    
```

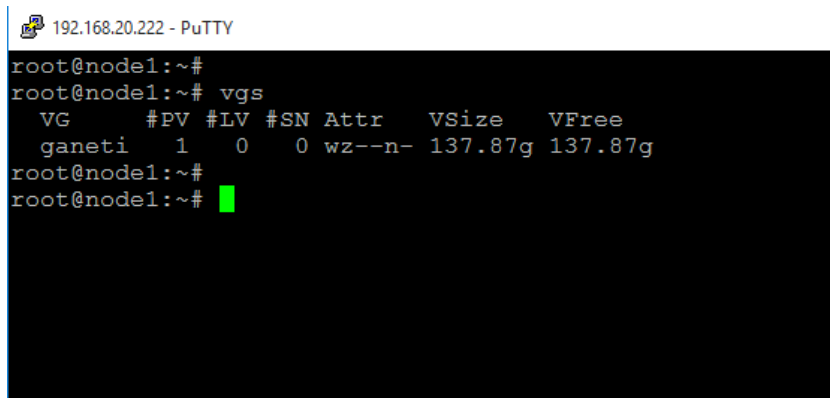


```

192.168.20.222 - PuTTY
root@node1:~# vgcreate ganeti /dev/sda3
Volume group "ganeti" successfully created
root@node1:~#
root@node1:~# █

```

Figure 2.6: Volume Group Create



```

192.168.20.222 - PuTTY
root@node1:~#
root@node1:~# vgs
VG          #PV #LV #SN Attr   VSize   VFree
ganeti      1   0   0 wz--n- 137.87g 137.87g
root@node1:~#
root@node1:~# █

```

Figure 2.7: Volume Group Check

Note: on a production Ganeti server it is recommended to configure LVM not to scan DRBD devices for physical volumes. The document suggests editing `/etc/lvm/lvm.conf` and adding a reject expression to the filter variable, like this:

```
filter = [ "r|/dev/cdrom|", "r|/dev/drbd[0-9]+|" ]
```

## 2.6 CONFIGURE THE NETWORK

We're now going to reconfigure the network on our machine, so that we will be using VLANs. While it would be perfectly fine to use a single network for running virtual machines, there are a number of limitations, including: No separation between the networks used to manage the servers (management) and the disk replication network i.e. storage network. We will be using network-based disk replication. We'd like to keep the disk traffic separate from the management and service traffic. Instead of using separate Ethernet cards, we'll use VLANs. In commodity hardware we usually have only one network interface.

We need to implement the networks: *management*, *replication*, and *service*.

Ideally, we would create two VLANs:

A management + Storage VLAN (vlan 100).

An external (or service) VLAN (vlan 200), where we will "connect" the virtual machines to publish them on internet.

### *VLAN configuration*

To be on the safe side, let's install the vlan and bridge management tools (these should already have been installed by you earlier).

```
# apt-get install vlan bridge-utils
```

Let's make changes to the network configuration file for your system. If you remember, this is `/etc/network/interfaces`.

Edit this file, and look for the `br-man` definition for management and storage network and `br-public` for public VM network. This is the bridge interface you created earlier, and `eth0` is attached to it. It should look something like this:

```
# The loopback network interface
auto lo
iface lo inet loopback

auto br-man
iface br-man inet static
    address 192.168.20.222
    netmask 255.255.255.0
    gateway 192.168.20.1
    dns-nameservers 192.168.20.1
    bridge_ports eth0.100
    bridge_stp off
    bridge_fd 0
    post-up sys -w net.ipv6.conf.${IFACE}.disable_ipv6=1 #diabling IPv6 for this interface

auto br-public
iface br-public inet manual
    bridge_ports eth0.200
    bridge_stp off
    bridge_fd 0
    post-up sys -w net.ipv6.conf.${IFACE}.disable_ipv6=1 #diabling IPv6 for this interface
```

Figure 2.8: Network Interface configuration

## **2.7 SYNCHRONIZE THE CLOCK**

It's important that the nodes have synchronized time, so install the NTP daemon on every node:

```
# apt-get install ntp
```

## **2.8 INSTALL THE GANETI SOFTWARE**

Now install the software from the right package repository. How to do this depends on whether your machine is running Debian or Ubuntu. On Debian, the available version of ganeti is too old, but fortunately the current version is available in a back ports repository.

As root, create a file `/etc/apt/sources.list.d/wheezybackports.list` containing this one line: `deb http://cdn.debian.net/debian/ wheezy-back ports main` then refresh the index of available packages:

```
# apt-get update
```

Now, install the Ganeti software package. Note that the back ports packages are not used unless you ask for them explicitly.

```
# apt-get install ganeti/wheezy-back ports
```

This will install the current released version of Ganeti on our system; but any dependencies it pulls in will be the stable versions.



## 2.9 SETUP DRBD

We'll now set up DRBD (Distributed Replicated Block Device), which will make it possible for VMs to have redundant storage across two physical machines. DRBD was already installed when we installed Ganeti, but we still need to change the configuration:

```
# echo "options drbd minor_count=128 usermode_helper=/bin/true"
>/etc/modprobe.d/drbd.conf
# echo "drbd" >>/etc/modules
# rmmod drbd # ignore error if the module isn't already loaded
# modprobe drbd
The entry in /etc/modules ensures that drbd is loaded at boot
time.
```

## 2.10 INITIALIZE THE CLUSTER - MASTER NODE ONLY

We are now ready to run the commands that will create the Ganeti cluster. Do this only on the MASTER node of the cluster.

```
# gnt-cluster init --master-netdev=br-man --enabled-
hypervisors=kvm -N link=br-public --vg-name ganeti
cluster.project.edu

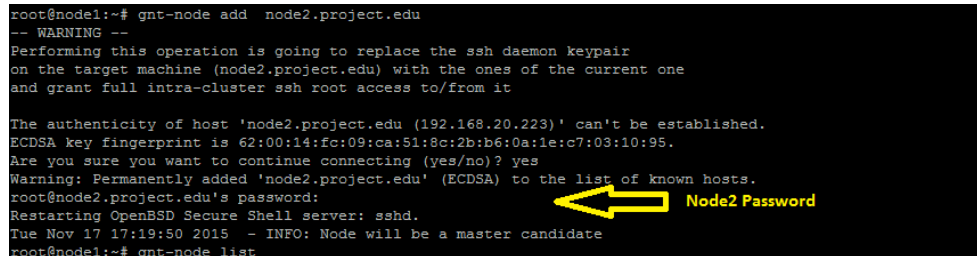
# gnt-cluster modify -H
kvm:kernel_path=,initrd_path=,vnc_bind_address=0.0.0.0
```

### Adding nodes to the cluster - MASTER NODE ONLY

So let's run the command to add the other nodes. Note the use of the -s option to indicate which IP address will be used for disk replication on the node we are adding.

Run this command only on the MASTER node of the cluster.

```
# gnt-node add node2.project.edu
```



```
root@node1:~# gnt-node add node2.project.edu
-- WARNING --
Performing this operation is going to replace the ssh daemon keypair
on the target machine (node2.project.edu) with the ones of the current one
and grant full intra-cluster ssh root access to/from it

The authenticity of host 'node2.project.edu (192.168.20.223)' can't be established.
ECDSA key fingerprint is 62:00:14:fc:09:ca:51:8c:2b:b6:0a:1e:c7:03:10:95.
Are you sure you want to continue connecting (yes/no)? yes
Warning: Permanently added 'node2.project.edu' (ECDSA) to the list of known hosts.
root@node2.project.edu's password:
Restarting OpenBSD Secure Shell server: sshd.
Tue Nov 17 17:19:50 2015 - INFO: Node will be a master candidate
root@node1:~# gnt-node list
```

Figure 2.9: Add a node to the Cluster

We will be warned that the command will replace the SSH keys on the destination machine (the node you are adding) with new ones. This is normal.

```
-- WARNING --
Performing this operation is going to replace the ssh daemon keypair on
the target machine (hostY) with the ones of the current one and grant
full intra-cluster ssh root access to/from it
```

```
When asked if you want to continue connection, say yes:
The authenticity of host 'node2 (192.168.20.223)' can't be established.
ECDSA key fingerprint is
a1:af:e8:20:ad:77:6f:96:4a:19:56:41:68:40:2f:06.
Are you sure you want to continue connecting (yes/no)? yes
When prompted for the root password for node2, enter it:
Warning: Permanently added 'node2' (ECDSA) to the list of known hosts.
root@node1's password:
```

You may see the following informational message; you can ignore it:  
Restarting OpenBSD Secure Shell server: sshd.

Rather than invoking init scripts through `/etc/init.d`, use the service utility, e.g. `service ssh restart`

Since the script you are attempting to invoke has been converted to an Upstart job, you may also use the `stop` and then `start` utilities,

e.g. `stop ssh ; start ssh`. The `restart` utility is also available.

```
ssh stop/waiting
ssh start/running, process 2921
```

The last message you should see is this:

```
Tue Nov 17 17:19:50 2015 - INFO: Node will be a master candidate
```

This means that the machine you have just added into the node (hostY) can take over the role of configuration master for the cluster, should the master (hostX) crash or be unavailable.

Check the node has been added in cluster or not by following command:  
`#gnt-node list`

```
root@node1:~# gnt-node list
Node           DTotal  DFree  MTotal  MNode  MFree  Pinst  Sinst
node1.project.edu 137.9G 137.9G  2.4G  246M  2.3G   0      0
node2.project.edu 137.9G 137.9G  2.0G  94M   1.8G   0      0
```

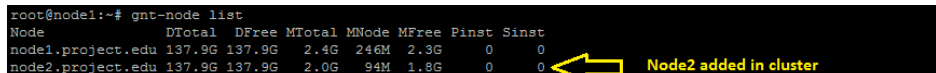


Figure 2.10: Node list

Now add the remaining node in our cluster and check the status again.

## 2.11 INSTALLING OS DEFINITION - ALL NODES

We need to install a support package called `ganeti-instance-image`. This provides `ganeti` with an "OS definition" - a collection of scripts which `ganeti` uses to create, export and import an operating system.

The package can be installed as follows: do this on all nodes in your cluster.

```
# wget https://code.osuosl.org/attachments/download/2169/ganeti-
instance-image_0.5.1-1_all.deb
# dpkg -i ganeti-instance-image_0.5.1-1_all.deb
```

## 2.12 UPDATE THE OS DEFINITION - MASTER ONLY

First wait until the other (slave) nodes in our cluster have installed the ganeti-instance-image package. Instance-image needs to be told how to install or re-install the operating system. It can be configured to do this by unpacking an image of an already-installed system (in tar, dump or qcow2 format), but in our case we just want to do a manual install from a CD image.

On the master node, as root create a file `/etc/ganeti/instance-image/variants/cd.conf` with the following contents:

```
CDINSTALL="yes"  
NOMOUNT="yes"
```

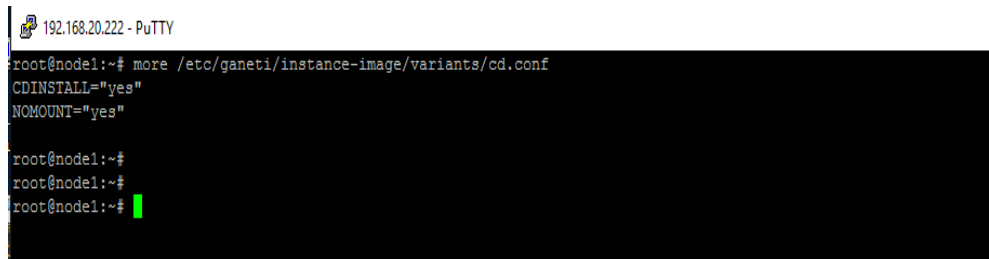
Aside: the full set of settings you could put in this file are listed in `/etc/default/ganeti-instance-image`, but don't edit them there

Now edit `/etc/ganeti/instance-image/variants.list` so it looks like this:

```
default  
cd
```

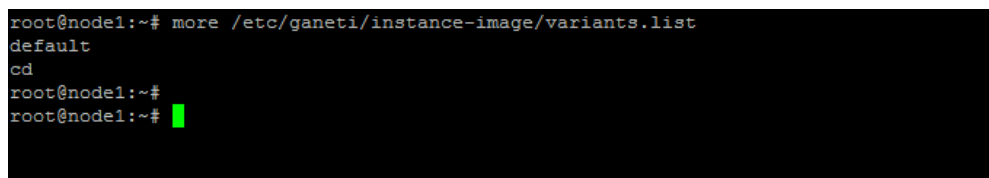
Copy these two files to the other nodes:

```
# gnt-cluster copyfile /etc/ganeti/instance-  
image/variants/cd.conf  
# gnt-cluster copyfile /etc/ganeti/instance-image/variants.list
```



```
192.168.20.222 - PuTTY  
root@node1:~# more /etc/ganeti/instance-image/variants/cd.conf  
CDINSTALL="yes"  
NOMOUNT="yes"  
  
root@node1:~#  
root@node1:~#  
root@node1:~#
```

Figure 2.11: Variants Configuration



```
root@node1:~# more /etc/ganeti/instance-image/variants.list  
default  
cd  
root@node1:~#  
root@node1:~#
```

Figure 2.12: Variants check

Still on the master, check that the "image+cd" variant is available.

```
# gnt-os list  
Name  
debootstrap+default  
image+cd << THIS ONE  
image+default
```

```

root@node1:~# gnt-os list
Name
debootstrap+default
image+cd
image+default
root@node1:~#
root@node1:~#
root@node1:~#
root@node1:~#

```

Figure 3.13: Boot source for instances

### 2.13 DISTRIBUTING ISO IMAGES - ALL NODES

If using DRBD, the ISO images used for CD installs must be present on all nodes in the cluster, in the same path. You could copy them to local storage on the master node, and then use `gnt-cluster copy file` to distribute them to local storage on the other nodes. However to make things simpler, we've made all the ISO images available on an NFS share (Network File Service), which you can attach. On every node, create an empty directory `/iso`:

```
# mkdir /iso
```

Now copy a test OS iso in `/iso` directory. We have copied a debian iso image for test. Now send the iso image to every node by following command:

```
# gnt-cluster copyfile /iso/debian-7.9.0-amd64-netinst.iso
```

### 2.14 CREATION OF INSTANCE - EVERYONE ON MASTER NODE

For example, if you working on `host3` then you will have to login to `host1` (your cluster's master node). You will then create a VM called `testvm.project.edu` and instruct ganeti to create it on your host using the flag `-n node3.project.edu`. To create new an instance, run the following command. (Note that we don't start it yet, because we want to temporarily attach the CD-ROM image at start time).

```
# gnt-instance add -t drbd -o image+cd -s 4G -B
minmem=256M,maxmem=512M --no-start --no-name-check --no-ip-check
testvm.project.edu
```

```

root@node1:~#
root@node1:~#
root@node1:~#
root@node1:~# gnt-instance add -t drbd -o image+cd -s 4G -B minmem=256M,maxmem=512M --no-start --no-name-check --no-ip-check testvm.project.edu
Wed Nov 18 16:35:12 2015 - INFO: Selected nodes for instance testvm.project.edu via allocator hail: node2.project.edu, node1.project.edu
Wed Nov 18 16:35:13 2015 * creating instance disks...
Wed Nov 18 16:35:27 2015 adding instance testvm.project.edu to cluster config
Wed Nov 18 16:35:29 2015 - INFO: Waiting for instance testvm.project.edu to sync disks
Wed Nov 18 16:35:30 2015 - INFO: - device disk/0: 0.90% done, 4m 16s remaining (estimated)
Wed Nov 18 16:36:31 2015 - INFO: - device disk/0: 17.60% done, 4m 46s remaining (estimated)
Wed Nov 18 16:37:32 2015 - INFO: - device disk/0: 34.30% done, 3m 59s remaining (estimated)
Wed Nov 18 16:38:33 2015 - INFO: - device disk/0: 51.00% done, 2m 57s remaining (estimated)
Wed Nov 18 16:39:35 2015 - INFO: - device disk/0: 67.70% done, 1m 55s remaining (estimated)
Wed Nov 18 16:40:36 2015 - INFO: - device disk/0: 84.20% done, 56s remaining (estimated)
Wed Nov 18 16:41:33 2015 - INFO: - device disk/0: 99.90% done, 0s remaining (estimated)
Wed Nov 18 16:41:34 2015 - INFO: - device disk/0: 100.00% done, 0s remaining (estimated)
Wed Nov 18 16:41:35 2015 - INFO: Instance testvm.project.edu's disks are in sync
Wed Nov 18 16:41:35 2015 * running the instance OS create scripts...
root@node1:~#
root@node1:~#
root@node1:~#
root@node1:~#

```

Figure 2.13: Instance create

### Explanation:

-t drbd means replicated LVM (replicated with DRBD)  
 -o image+cd means to use the OS definition ganeti-instance-image, with the cd variant we created  
 -s 4G means to create a 4GB disk drive  
 -B minmem=256M,maxmem=512M sets the memory limits for this VM. It will try to run it with 512M, but if not enough memory is available it may shrink it down to 256MB.  
 --no-start means don't start the VM after creating it  
 --no-name-check means don't check that testvm.project.edu exists in the DNS (because it doesn't!)  
 --no-ip-check means if you found the name in the DNS, don't check that the IP address is not in use the final parameter is the name of the instance. It would be good practice to use a fully-qualified domain name for this.

You will see some messages about creating the instance being created.

## 3. RESULTS

### 3.1 RUN AN INSTANCE

Now start the VM using the following command, which attaches the CD-ROM temporarily and boots from it:

```
# gnt-instance start -H
boot_order=cdrom,cdrom_image_path=/iso/debian-7.9.0-amd64-
netinst.iso testvm.project.edu
```

Waiting for job 332 for testvm.project.edu ...

```
root@node1:~#
root@node1:~#
root@node1:~# gnt-instance start -H boot_order=cdrom,cdrom_image_path=/iso/debian-7.9.0-amd64-netinst.iso testvm.project.edu
Waiting for job 332 for testvm.project.edu ...
root@node1:~#
root@node1:~#
root@node1:~#
root@node1:~#
```

Figure 3.1: Run an instance

### 3.2 Verify the configuration of your cluster

Again only on the MASTER node of the cluster:

```
# gnt-cluster verify
```

This will tell you if there are any errors in your configuration.

```
root@node1:~# gnt-cluster verify
Submitted jobs 23, 24
Waiting for job 23 ...
Tue Nov 17 17:20:50 2015 * Verifying cluster config
Tue Nov 17 17:20:50 2015 * Verifying cluster certificate files
Tue Nov 17 17:20:50 2015 * Verifying hypervisor parameters
Tue Nov 17 17:20:50 2015 * Verifying all nodes belong to an existing group
Waiting for job 24 ...
Tue Nov 17 17:20:50 2015 * Verifying group 'default'
Tue Nov 17 17:20:50 2015 * Gathering data (3 nodes)
Tue Nov 17 17:20:51 2015 * Gathering disk information (3 nodes)
Tue Nov 17 17:20:51 2015 * Verifying configuration file consistency
Tue Nov 17 17:20:51 2015 * Verifying node status
Tue Nov 17 17:20:51 2015 * Verifying instance status
Tue Nov 17 17:20:51 2015 * Verifying orphan volumes
Tue Nov 17 17:20:51 2015 * Verifying N+1 Memory redundancy
Tue Nov 17 17:20:51 2015 * Other Notes
Tue Nov 17 17:20:52 2015 * Hooks Results
```

Figure 3.2: Verify Cluster

### 3.3 CHECK DETAIL INFORMATION ABOUT AN INSTANCE

Ganeti will assign a port for console access for the created VM so that we can install the operating system on it remotely. Here is how to check it.

```
# gnt-instance info testvm.project.edu
```

```
root@node1:~#
root@node1:~#
root@node1:~# gnt-instance info testvm.project.edu
- Instance name: testvm.project.edu
  UUID: 9c7fd8e-7a63-4d58-9424-c0260aa3993e
  Serial number: 2
  Creation time: 2015-11-18 16:35:27
  Modification time: 2015-11-18 16:49:18
  State: configured to be up, actual state is up
  Nodes:
    - primary: node2.project.edu
      group: default (UUID 7ee21ab-1874-4999-955f-4937b69ac536)
    - secondary: node1.project.edu (group default, group UUID 7ee21ab-1874-4999-955f-4937b69ac536)
  Operating system: imagecd
  Operating system parameters:
  Allocated network port: 11003
  Hypervisor: kvm
  console connection: vnc to node2.project.edu:11003 (display 5103)
  Hypervisor parameters:
    acpi: default (True)
    boot_order: default (disk)
    cdrom_image_path: default ()
    cdrom_disk_type: default ()
    cdrom_image_path: default ()
    cpu_cores: default (0)
    cpu_masks: default (all)
    cpu_sockets: default (0)
    cpu_threads: default (0)
    cpu_type: default ()
    disk_cache: default (default)
    disk_type: default (paravirtual)
```

Figure 3.3: Information about an instance-1

More information about testvm.project.edu

```
auto_balance: default (True)
RAMmem: 512
memory: default (512)
minmem: 256
spindle_use: default (1)
vgpus: default (1)
NICs:
- nic/0:
  MAC: aa:00:00:02:99:0e
  IF: None
  mode: bridged
  link: br-public
  vlan:
  network: None
  UUID: 6f0b9162-351c-4ef0-8005-348855243e63
  name: None
Disk template: drbd
Disks:
- disk/0: drbd, size 4.0G
  access mode: rw
  nodeA: node2.project.edu, minor=1
  nodeB: node1.project.edu, minor=1
  port: 11004
  auth key: 74faf18d6729f38437e90715544fec31e12614c5
  on primary: /dev/drbd1 (147:1) in sync, status ok
  on secondary: /dev/drbd1 (147:1) in sync, status ok
  name: None
  UUID: aa8f28a-3783-464e-8211-8cc12ee68525
  child devices:
    - child 0: plain, size 4.0G
      logical_id: ganeti/6d61ceff-0e4e-40cc-8d02-4e6eb43b16d.disk0_data
      on primary: /dev/ganeti/6d61ceff-0e4e-40cc-8d02-4e6eb43b16d.disk0_data (254:2)
      on secondary: /dev/ganeti/6d61ceff-0e4e-40cc-8d02-4e6eb43b16d.disk0_data (254:2)
      name: None
      UUID: 174e3ee-2f9a-4808-816f-efe1ec3e832
    - child 1: plain, size 128M
      logical_id: ganeti/6d61ceff-0e4e-40cc-8d02-4e6eb43b16d.disk0_meta
      on primary: /dev/ganeti/6d61ceff-0e4e-40cc-8d02-4e6eb43b16d.disk0_meta (254:3)
      on secondary: /dev/ganeti/6d61ceff-0e4e-40cc-8d02-4e6eb43b16d.disk0_meta (254:3)
      name: None
      UUID: 1434ab6d-acee-4d3b-8c84-d7d4695a83e5
```

Figure 3.4: Information about an instance-2

### 3.4 INSTALL A GUEST OPERATING SYSTEM IN AN INSTANCE

We can see the console access for the VM is node2.project.edu:11003. We will use a VNC viewer to access the VM and install the operating system on it.

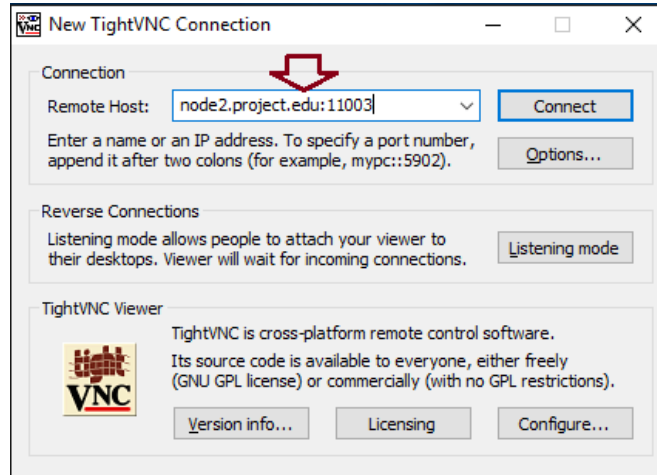


Figure 3.5: Connect an instance by VNC Viewer

By clicking “Connect” button the console will appear in front of us and we will install the OS on `testvm.project.edu` instance with the IP address of `192.168.20.232`.



Figure 3.6: Install Guest Operating System in an Instance

### 3.5 CHANGING NETWORK OF AN INSTANCE

We may not need to run this, but if we want to we can. Let’s say we have informed our cluster “br-public” as the default network for every instance. Now we are connected to the “br-man” network. As a result we cannot access the VM from remote network as “br-man” is not published to internet.

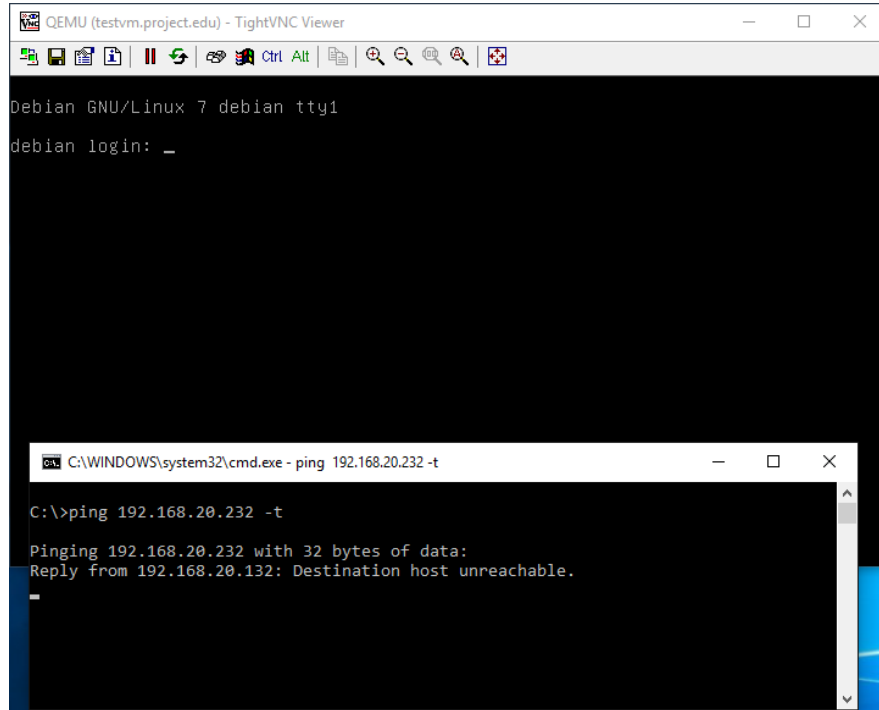


Figure 3.7: Connectivity check for an instance

Now we need to change the network of the instance to `br-man` from `br-public`. Here is how to do that:

Moving the network interface 0 to another network:

```
# gnt-instance modify --net 0:modify,link=br-man --hotplug testvm.project.edu
```

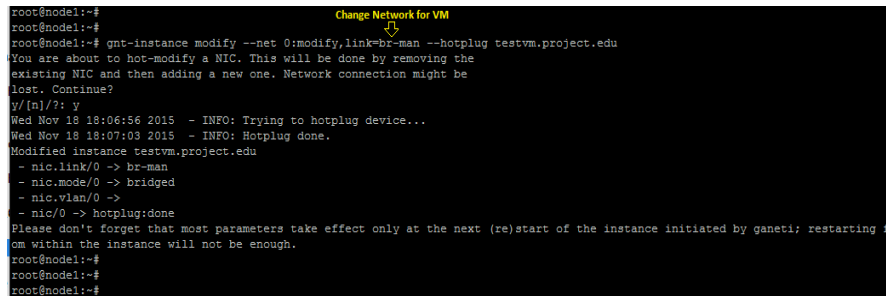


Figure 3.8: Change the network for an instance

Try to do this to move the network interface of one of the instances you created earlier, onto the `br-man`. After successfully shifting the network, now we can access the instance without any problem.



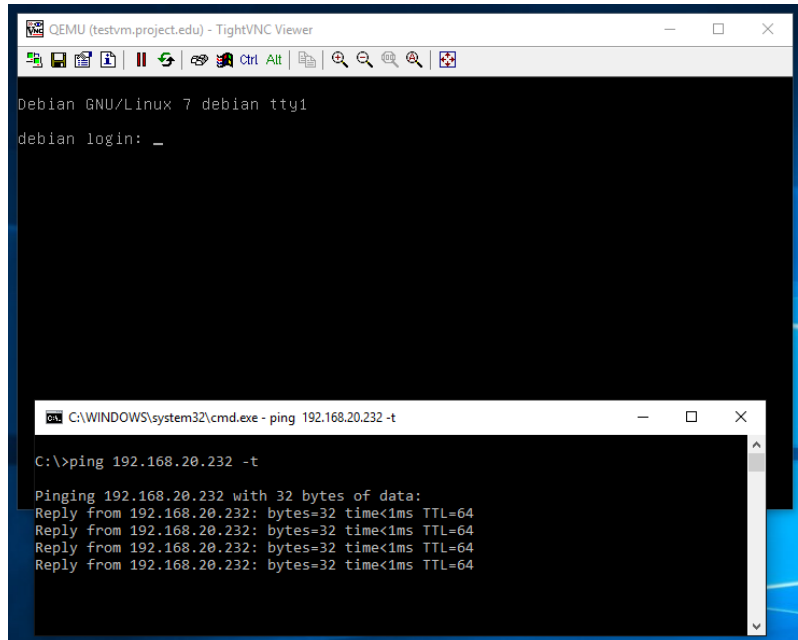


Figure 3.9: Check availability after changing the network of an instance

### 3.6 TESTING SERVICE MIGRATION BETWEEN TWO INSTANCES

In some cases we may need to change the service of an instance to backup node. Let's say we have an instance running with DRBD replication on `node2.project.edu` as primary node and `node1.project.edu` as backup node. Now we have a situation and we need to shut down `node2.project.edu` for maintenance. We should do it without interrupting the users from their service. So we will be migrated the service to `node1.project.edu` and shut down `node2.project.edu` for maintenance.

```
# gnt-instance migrate testvm.project.edu
```

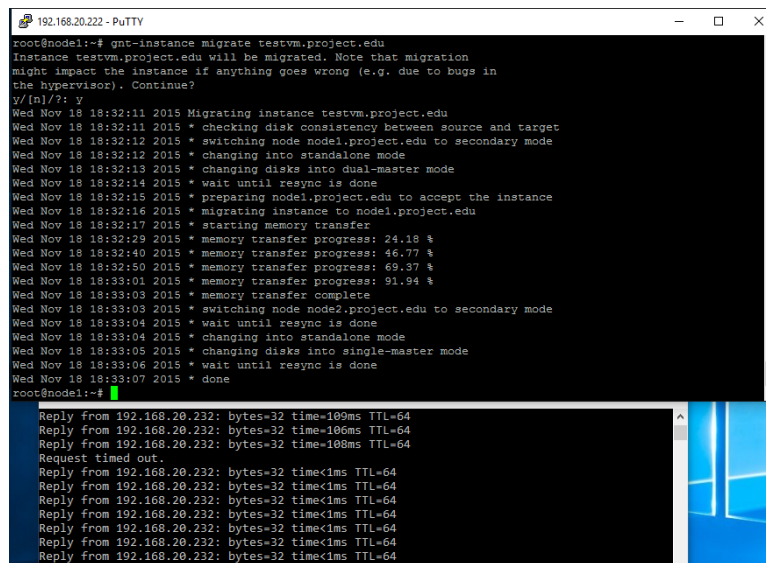


Figure 3.10: Live service migration of an instance

### 3.7 INSTANCE FAILOVER SCENARIO

Suppose we have an instance running on `node2.project.edu` as its primary node and `node1.project.edu` as its backup node. Suddenly disaster happens; `node2.project.edu` has failed and went down.

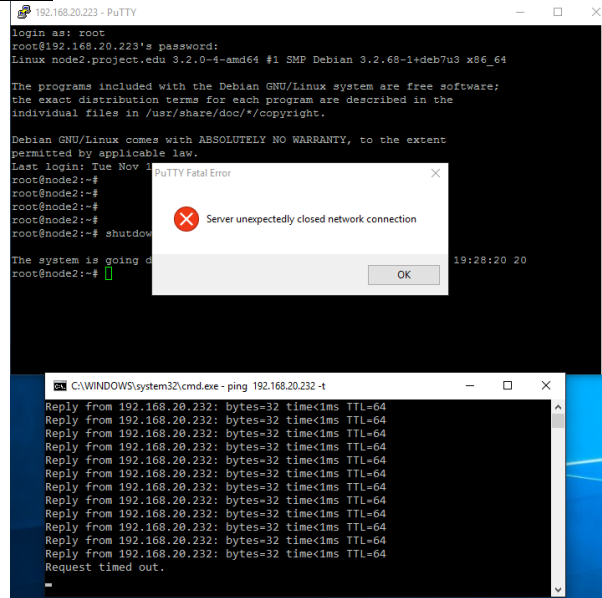


Figure 3.11: Failover of an instance

Instances' running on that node has been down and services stopped. But we can make the service alive within short time without losing any data of that instance by following command.

```
# gnt-instance failover --ignore-consistency testvm.project.edu
```

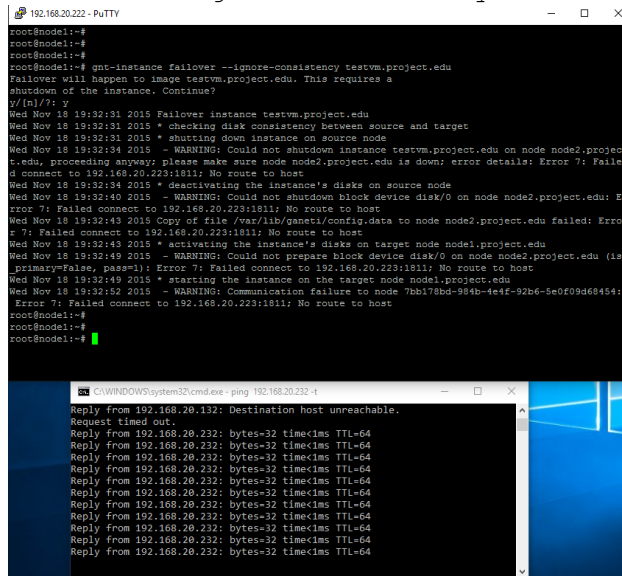


Figure 3.12: Recovery of an instance after failure

Now if we check the instance list we can see the instance is running on `node1.project.edu` as its primary node.

```
# gnt-instance list -o name,pnode,snodes,status
```

```

root@node1:~#
root@node1:~#
root@node1:~# gnt-instance list -o name,pnode,snodes,status
Instance      Primary_node      Secondary_Nodes      Status
firstvm       node3.project.edu                running
second        node1.project.edu node2.project.edu    running
testvm.project.edu node1.project.edu node2.project.edu    running
root@node1:~#
root@node1:~#
root@node1:~# █
    
```

Figure 3.13: Check total instances of the Cluster

#### 4.CONCLUSION AND FUTURE WORK

In our project we have tried our best to run the virtualization over commodity hardware and create some VMs on it. We have successfully completed the job. Later we tried to introduce some scenarios and recommended some standard way-out of those cases. We can suggest this project for small and medium office if they want to move for virtualization of their services using existing commodity hardware.

Probing deeper, one can use a web management tool for Ganeti administration. Moreover if the cluster used for business and provided SaaS to the customers, one can work on the development of a web interface for system administrators so that they can manage and check billing of their uses which will be a very useful tool for provider as well as customer.

Table 1. Heading and text fonts.

Text	Alignment	Font	Followed by:
Title	Centre	20 pt. TNR, bold, small-caps	24 pt. line sp.
Authors	Centre	13 pt. TNR	12 pt. line sp.
Addresses	Centre	12 pt. TNR	
emails	Centre	11 pt. italic TNR	18 pt. line sp. (last)
Abstract heading	Left	13 pt. bold italic TNR, small caps	6 pt. line sp.
Abstract text	Left	10 pt. italic TNR	12 pt. line sp.
Keywords heading	Left	13 pt. bold italic TNR, small caps	6 pt. line sp.
Keywords	Left, left, ..	10 pt. italic TNR	18 pt line sp.
Section headings	Left	14 pt. bold TNR, small caps	6 pt. line sp.
Sub-section heads	Left	12 pt. bold TNR	6 pt. line sp.
Sub-sub-sections	Left	11 pt. bold TNR	6 pt. line sp.
Body text	Full (left/right)	11 pt. TNR	12 pt line sp. (last)
Figures	Centre		6 pt. line sp.
Figure captions	Centre	11 pt. TNR	12 pt. line sp.
References	Left	10 pt. TNR (as shown)	6 pt. line sp

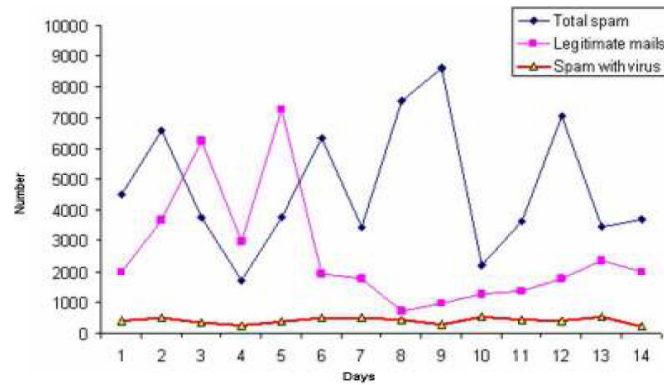


Figure 4. Spam traffic sample

## REFERENCES

- [1] J]Mollah, Muhammad Baqer, Kazi Raisul Islam, and Sikder Sunbeam Islam. "Next generation of computing through cloud computing technology." Electrical & Computer Engineering (CCECE), 2012 25th IEEE Canadian Conference on. IEEE, 2012
- [2] Soltész, S., Pötzl, H., Fiuczynski, M. E., Bavier, A., & Peterson, L. (2007, March). Container-based operating system virtualization: a scalable, high-performance alternative to hypervisors. In ACM SIGOPS Operating Systems Review (Vol. 41, No. 3, pp. 275-287). ACM.
- [3] Padala, P., Zhu, X., Wang, Z., Singhal, S., & Shin, K. G. (2007). Performance evaluation of virtualization technologies for server consolidation. HP Labs Tec. Report.
- [4] Regola, N., & Ducom, J. C. (2010, November). Recommendations for virtualization technologies in high performance computing. In Cloud Computing Technology and Science (CloudCom), 2010 IEEE Second International Conference on (pp. 409-416). IEEE.
- [5] Sharma, S. (2016). Expanded cloud plumes hiding Big Data ecosystem. Future Generation Computer Systems, 59, 63-92.

## AUTHORS

**Mohammad Mamun Or Rashid** received his B.Sc. (Hon's) in Computer Science from North South University (NSU), Dhaka, Bangladesh in 2006 and M.Sc. in Computer Science in 2015 from Jahangirnagar University, Savar, Dhaka, Bangladesh. He has been working in Government of the People's Republic of Bangladesh as a "System Analyst" in Ministry of Expatriate's Welfare and Overseas Employment. His current research interests include Cloud Computing, virtualization and information Security management system. He is also interested in Linux and Virtual networking in cloud computing.



**M. Masud Rana** received the B.Sc. in Computer Science and Engineering from the Dhaka International University, Dhaka, Bangladesh in 2014. Currently, he is working towards M.Sc. in Computer Science from the Jahangirnagar University, Savar, Dhaka, Bangladesh. He has serving as an Executive Engineer, Information Technology in Bashundhara Group also he has more than 5 years of experience as an Assistant Engineer, IT in SQUARE Informatix Ltd, Bangladesh and Executive Engineer, IT in Computer Source Ltd, Bangladesh. His main areas of research interests include virtualization, networking and security aspects of cloud computing



**Jugal Krishna Das** received B.Sc., M.Sc. and PhD in Computer Science all from Russia. He is currently an Professor of Computer Science and Engineering department of Jahangirnagar University, Savar, Dhaka. His research interests include topics such as Computer Networks, Natural Language Processing, Software Engineering.

