

Air Quality Forecast for Arctic Communities Service (AURORAE)

WP4 – Task 4.5 - Pilot Service 5

I.Crotti¹, A.Cuzzcoli², D.DeMarchi¹, F.Eyraud¹, L.Selmi², A.Pasini², S.Dobricic¹

¹European Commission, Joint Research Centre, Ispra, Italy

²Institute of Atmospheric Pollution Research, National Research Council, Roma, Italy

Contacts : ilaria.crotti@ec.europa.eu, alice.cuzzucoli@iia.cnr.it,
srdan.dobricic@ec.europa.eu

This project has received funding from the European Union's Horizon 2020 research and innovation programme under grant agreement No. 101003472



Air pollution in North Europe

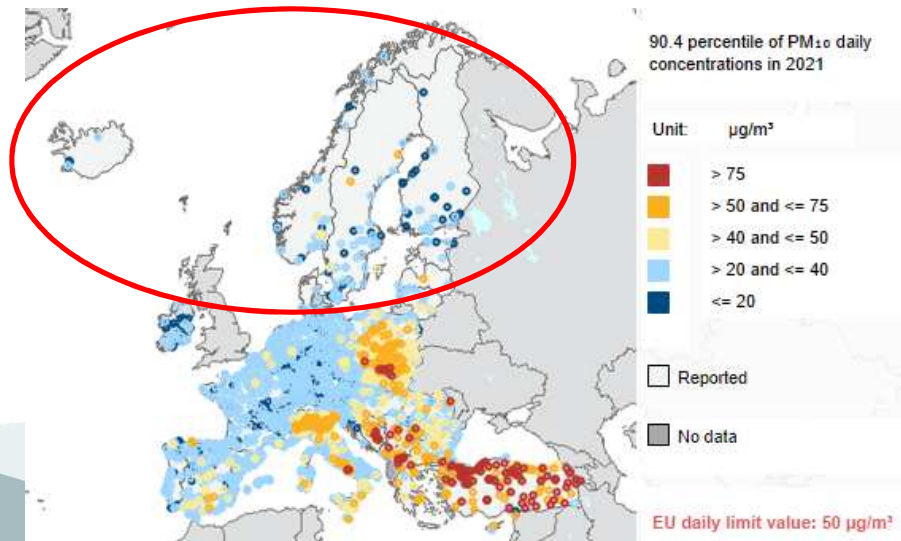
Particulate matter (PM₁₀) is a complex mixture of solids and aerosols with a diameter of 10 microns or less

It is inhalable into the lungs and can induce adverse health effects (respiratory, cardiovascular, etc.)

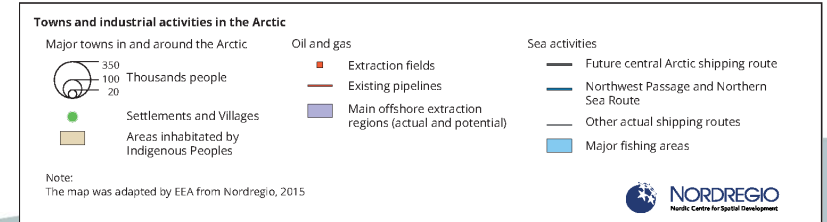
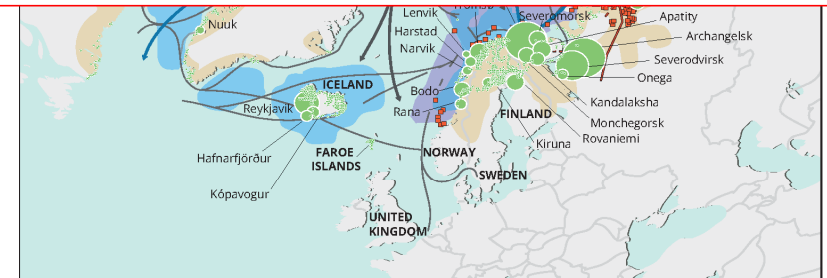
WHO 2021 recommendations

15 µg/m³ mean annual concentration

45 µg/m³ mean daily concentration



Air pollution forecasts are essential for mitigation of pollution and for emergency preparedness in Arctic villages and cities



A forecast tailored for the Arctic: the AURORAE service

