



# Open Research – a research funder perspective

**Extreme Open Science Initiative workshop**  
**19 January 2018**

David Carr

Programme Manager - Open Research, Wellcome Trust

[d.carr@wellcome.ac.uk](mailto:d.carr@wellcome.ac.uk)

ORCID: 0000-0003-1435-307X



Slides made available under <http://creativecommons.org/licenses/by/4.0/>

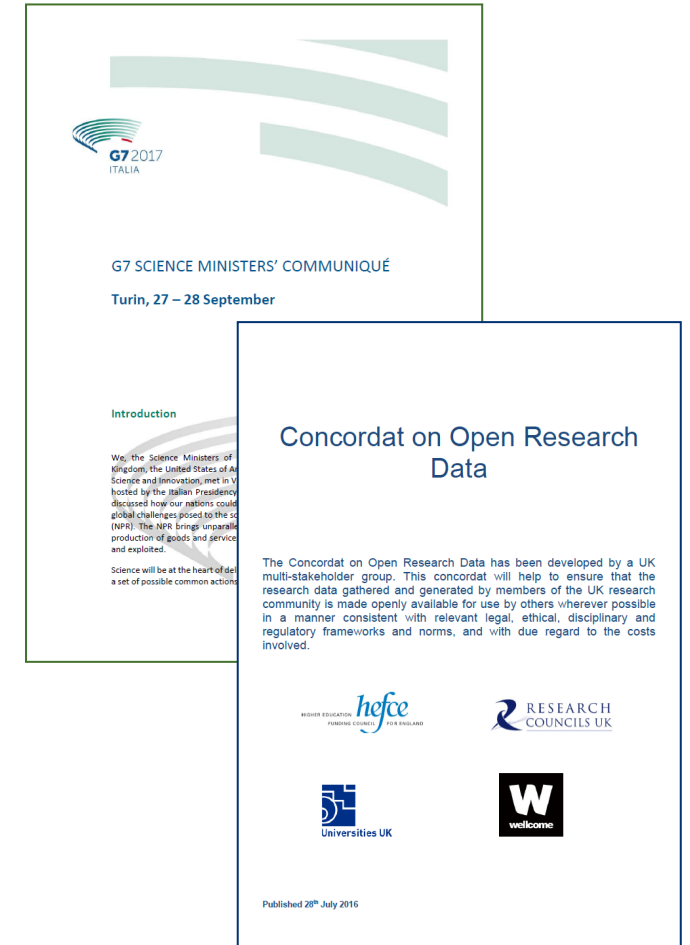
# Wellcome's commitment to Open Research

- committed to ensuring research outputs (papers, data, code & materials) can be accessed and used in ways that maximise health & societal benefit
- making these outputs more widely available holds the potential to:
  - accelerate discovery and its application
  - help ensure findings can be validated and reproduced
  - increase efficiency – reduce duplication and waste
- passionate long-term advocate of open access & data sharing, with long-standing policies



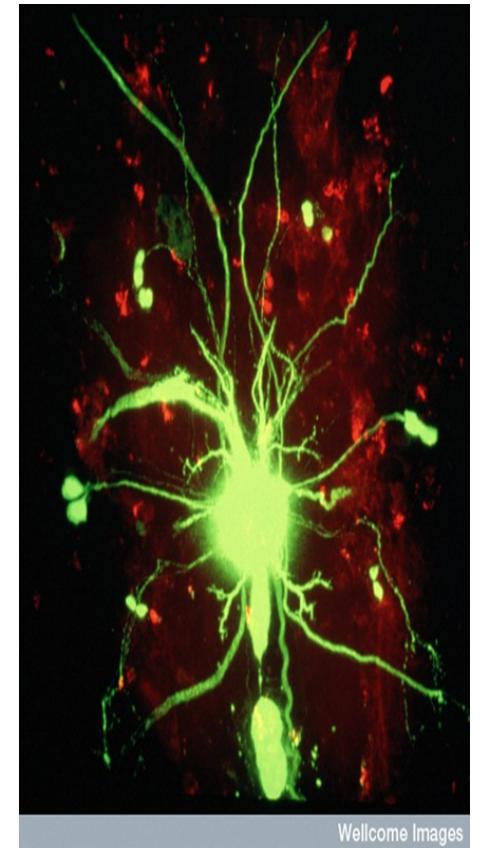
# Open Research - a gathering momentum

- High level political drive and support:
  - G7 Science Ministers' statement (Sept 2017)
  - European Commission – Open Science Policy Platform
  - UK Concordat on Open Research Data (2016)
- Cross-national initiatives to build open science infrastructure (e.g. European Open Science Cloud)
- Increased attention on research reproducibility and waste, and on concept of FAIR
- Sharing research outputs in timely manner increasingly seen as part of good research practice



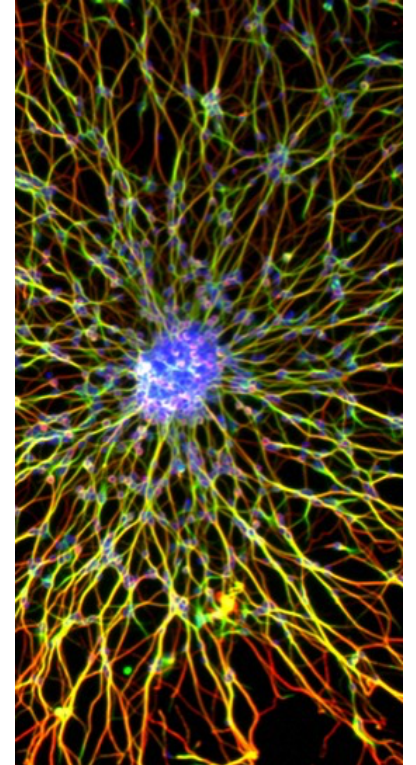
# Growing funder consensus...

- major challenges associated with increasingly vast & complex datasets generated by research, but also tremendous opportunities
- funders around the world developing increasingly strong policies around sharing data and other outputs
- strong high-level policy convergence:
  - data should be preserved and shared in a way that maximizes value
  - requirement for data management plans in grant applications
  - data underlying published findings must be accessible (and open wherever feasible)



# Managing and sharing research outputs – Wellcome's policy

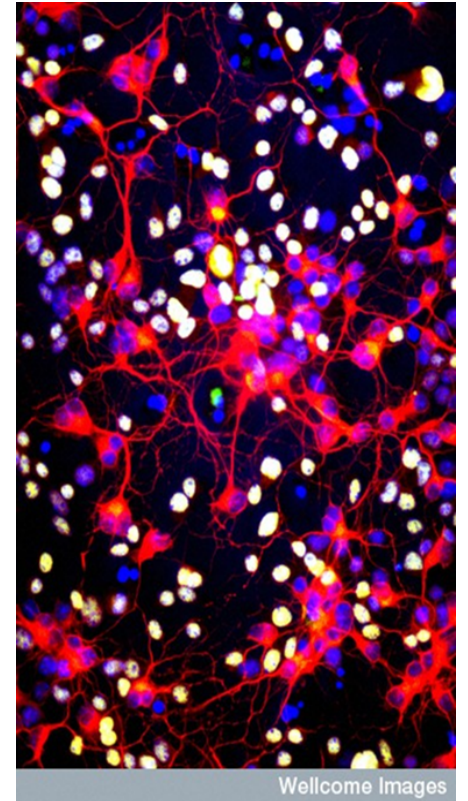
- launched a new policy on managing and sharing data, software and materials in July 2017
- extended our previous policy on data management and sharing to cover other research outputs
- key elements of the policy are:
  - we expect all researchers we fund to maximise access to research data, software and materials with as few restrictions as possible
  - we require an **outputs management plan** - where the research is likely to generate significant outputs of clear value as a resource
  - we commit to review and support costs of output management plans as integral part of grant





# Strengthening our requirements

- in revising our policy, we made clear that:
  - data and original software underlying publications must be made available at the time of publication
  - data relevant to a public health emergency should be shared as widely and rapidly as possible, irrespective of timing of publication
  - outputs should be discoverable, have persistent identifiers and be placed in recognised community repositories wherever possible
- we also committed to introduce a check at final report stage to examine the extent to which outputs have been shared in line with the policy



Wellcome Images

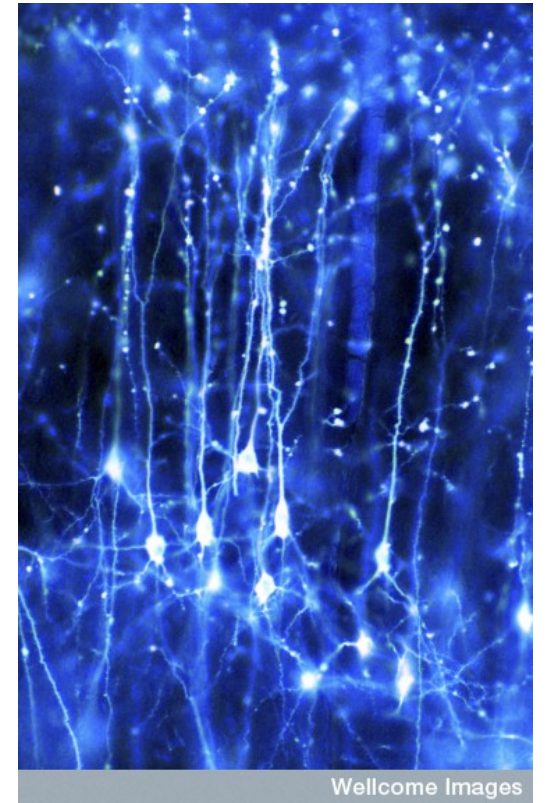
# Outputs management plans – key elements

- Data, software and materials
  - The outputs your research will generate
  - When you intend to share these outputs
  - Where the outputs will be made available
  - How the outputs will be accessible to others
  - Whether limits to sharing are required
  - How outputs will be preserved
- Intellectual property
- Resources required



# Addressing the challenges

- implementation and monitoring of funder policies is work in progress
- there are significant hurdles to outputs sharing
  - reward and assessment structures
  - repository infrastructure lacking in some areas
  - shortage of skills and lack of career paths for data specialists
  - need for platforms and tools to enable discoverability and re-use
- different disciplines at very different places in developing resources and practices to support data sharing
- committed to working with other funders, journals researchers and institutions to address these challenges.



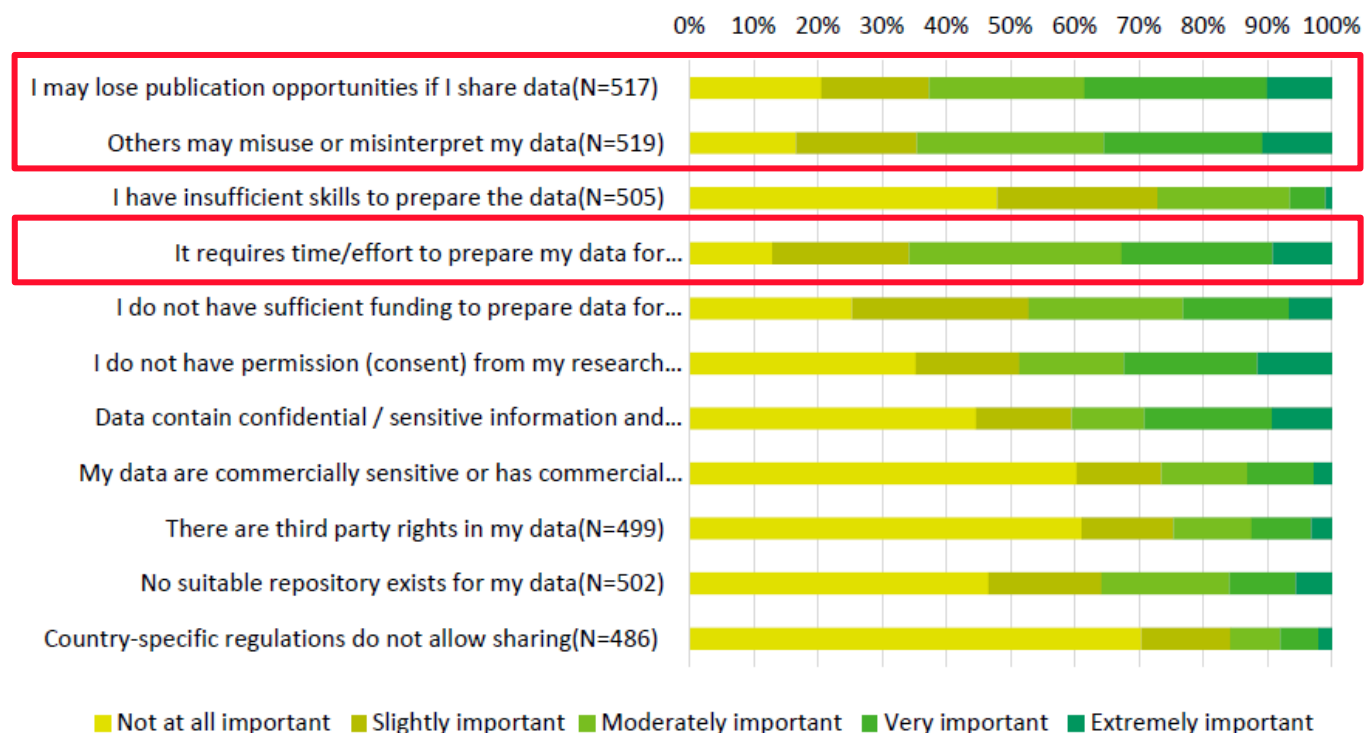
Wellcome Images

Dr Jonathan Clarke, Wellcome Images



# Researcher attitudes & practices

Concerns persist around fear of misuse of data, loss of publication opportunities and resource & time required to share data...



Van den Eynden, Veerle; Knight, Gareth; Vlad, Anca; Radler, Barry; Tenopir, Carol; Leon, David; Manista, Frank; Whitworth, Jimmy; Corti, Louise (2016): Survey of Wellcome researchers and their attitudes to open research. figshare.

<https://dx.doi.org/10.6084/m9.figshare.4055448.v1>



# Developing Open Research

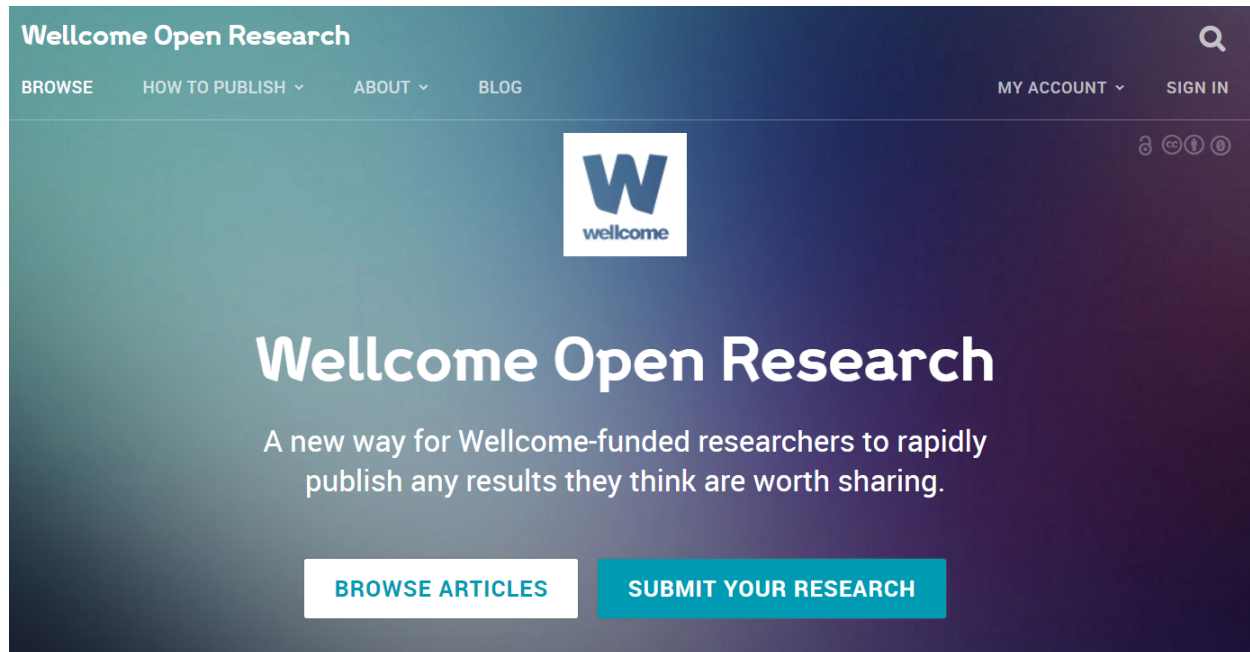
# Developing Open Research

- Dedicated **Open Research team** established at Wellcome in 2017 to lead and coordinate work:
  - **Funder-led activities** – developing major initiatives in areas where funders can take a lead in supporting the community and driving change.
  - **Community-led activities** – supporting researchers and innovators to develop and test cutting-edge approaches to openness; piloting discipline-specific initiatives.
  - **Policy leadership** – taking a lead in developing our policies and practices as a funder to support, incentivise and sustain open research.
- Partnership & ongoing engagement with the research community at heart of our approach



# 1. Funder-led activities

# Wellcome Open Research



[www.wellcomeopenresearch.org](http://www.wellcomeopenresearch.org)

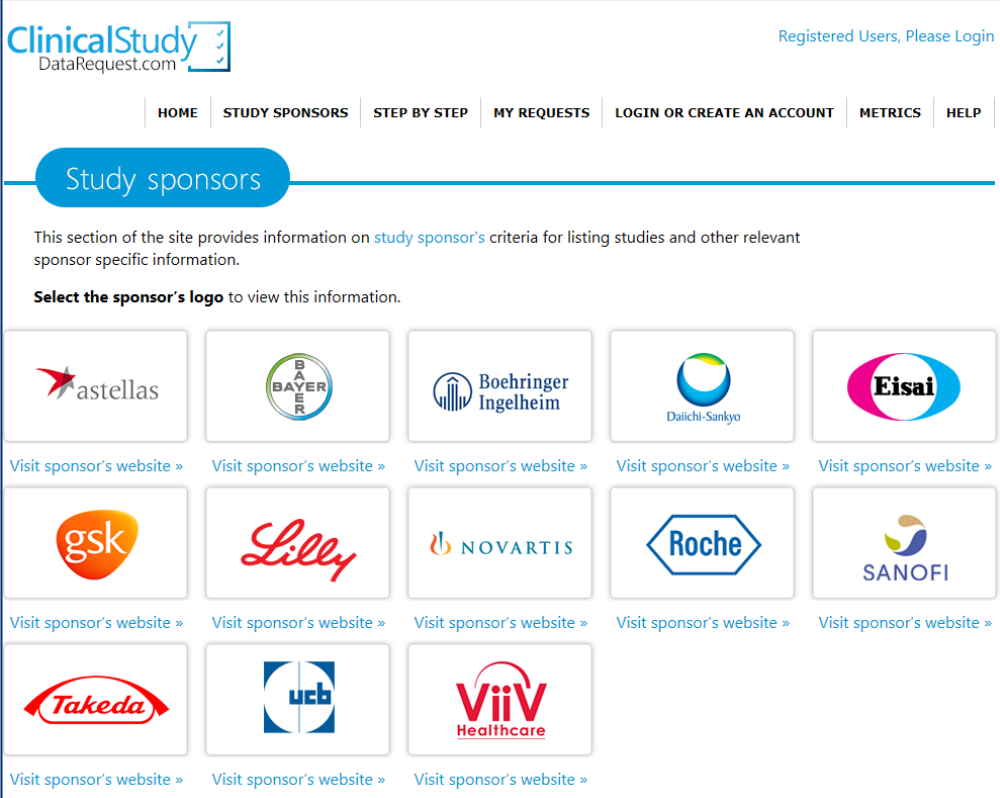
Publishing platform where Wellcome-funded researchers can publish any results they think are worth sharing – with aim of making the sharing of research

- Faster
- Transparent
- Reproducible
- Inclusive
- Cost-effective



# Enabling access to clinical trial data (ClinicalStudyDataRequest.com)

- CSDR platform provides access to anonymised individual-level clinical trial data from 13 pharma companies
- Wellcome provides secretariat for independent review panel
- working with other funders to pilot use of CSDR to provide access to academic clinical trials – assisting groups with listing and anonymising data



The screenshot shows the ClinicalStudyDataRequest.com website. The header includes the logo, the text 'DataRequest.com', and a link for 'Registered Users, Please Login'. The navigation menu contains 'HOME', 'STUDY SPONSORS', 'STEP BY STEP', 'MY REQUESTS', 'LOGIN OR CREATE AN ACCOUNT', 'METRICS', and 'HELP'. The 'Study sponsors' section is highlighted with a blue button. Below the button, there is a paragraph explaining that the section provides information on study sponsor criteria. A prompt asks users to 'Select the sponsor's logo to view this information.' Below this, there is a grid of 13 sponsor logos, each with a 'Visit sponsor's website' link underneath. The logos are: Astellas, Bayer, Boehringer Ingelheim, Daiichi-Sankyo, Eisai, GSK, Lilly, Novartis, Roche, Sanofi, Takeda, UCB, and ViiV Healthcare.

[www.clinicalstudydatarequest.com](http://www.clinicalstudydatarequest.com)

# 2. Community-led activities

# The Open Science Prize

- Partnership with US National Institutes of Health & Howard Hughes Medical Institute
- Supported prototyping and development of tools & services to build on data and content
- Six prototypes supported (from 96 entries)
- Eventual grand prize: Nextstrain.org – real-time tracking of virus evolution



# New funding opportunities

- Research Enrichment – Open Research (launched November 2017)
  - open to Wellcome grantholders and applicants
  - awards of up to £50k for open research approaches that increase the impact of their grant
  - See: <https://wellcome.ac.uk/funding/research-enrichment-open-research>
- Prizes and challenges (coming 2018)
  - ‘pioneer’ awards to pilot cutting-edge approaches to open research
  - themed challenges for innovative data re-use



# 3. Policy leadership



# Shaping policy and practice

- implementing and reviewing our policies and guidance
- working with other funders to develop a 'blueprint' to enhance incentives
- maximising the value of outputs management plans
- developing strategy for long-term funding of research infrastructures
- supporting work to develop key success factors and indicators for open science



<https://wellcomecollection.org/works/tddbvrav>

# Closing thoughts

- very strong momentum behind open research but significant challenges remain
- as a funder, we are committed to:
  - stimulating innovative approaches to openness that enrich the research enterprise
  - building the evidence base on the benefits (and risks) of open approaches to research
  - working in partnership with other funders and with researchers, institutions, resource providers and publishers to address infrastructural, skills and cultural barriers
- we strongly support the pioneering efforts of SGC researchers and keen to stay engaged in the extreme open science initiative

# Any Questions?

