

Epigaeic ant (Hymenoptera: Formicidae) communities in urban parks located in Atlantic Forest biome

Débora R. de Souza-Campana*, Otávio G. M. da Silva, Leonardo Menino and Maria Santina de C. Morini

Universidade de Mogi das Cruzes, Laboratório de Mirmecologia do Alto Tietê. Rua Dr. Cândido Xavier de Almeida e Souza, CEP 08701-970 – Mogi das Cruzes, SP, Brazil

* Corresponding author. E-mail: debora.rdsouza@gmail.com

Abstract: Urban parks offer refuge for numerous animal species, and some of these parks represent the remaining fragments of native forests. We evaluate the diversity and composition of epigaeic ant species (Hymenoptera: Formicidae) in urban parks located within the Atlantic Forest biome (Centennial Park, Leon Feffer Park and Villa Lobos Park). For our collections, we placed pitfall traps along 100-m line transects in areas both accessible and inaccessible to the public. A total of 46 species distributed in seven subfamilies were collected. The number of species did not differ among park areas, but the ant communities themselves differed. Native species, such as *Strumigenys denticulata* and *S. louisianae*, were collected in the most preserved natural areas in the parks. Generalist species composed the richest guild and were primarily found in areas with public access. *Wasmannia auropunctata*, *Brachymyrmex heeri*, *Solenopsis* sp. 2, and *Solenopsis* sp. 3 were classified with high value as biological indicators.

Key words: urban ants; pitfall trap; visitation; biological indicator; exotic species

INTRODUCTION

The growth of urban areas leads to the loss of biodiversity (Faeth et al. 2011) because it causes significant changes in the composition, abundance, and richness of native species (Shochat et al. 2010). In addition, urban habitats often favor opportunistic species that take advantage of anthropogenic conditions (Shochat et al. 2010) to expand their area of dispersion (McIntyre et al. 2001).

The creation and maintenance of forest reserves, urban parks (Kowarik 2011), and public places (Koh and Sodhi 2004) may be a useful strategy for the conservation of biodiversity in the face of increasing urbanization. These places offer nesting resources, food,

and shelter for many animal species (Koh and Sodhi 2004) and therefore, constitute biodiversity repositories (Faeth et al. 2011).

Urban planning aimed at conserving flora and fauna and improving the quality of life primarily requires the assessment of the local biodiversity (Murphy 1988; Pearson 1994). Arthropods are essential in studies of conservation strategies. They provide information on the diversity of a given area, generally have short reproductive cycles, respond quickly to environmental disturbances, are easily sampled, have several trophic levels, and are of great public health and economic importance (McIntyre 2000). Moreover, they are one of the few groups of animals that increase species richness in urban areas (Faeth et al. 2011).

In this context, ants (Hymenoptera: Formicidae) are widely used in studies on biodiversity and on the influence of urbanization on insect communities because of their biological characteristics (Lopez-Moreno et al. 2003). They are highly diverse, have numerical and biomass dominance in almost all terrestrial habitats, are easily sampled and identified in terms of species/morphospecies, and typically have stationary nests that allow resampling over time (Alonso and Agosti 2000). Ants play a key role in distinct ecosystems (Mckey et al. 2010), including nutrient cycling (Folgarait 1998) and interactions with other organisms (Hölldobler and Wilson 1990). They are also used as biological indicators of urban environments (Yamaguchi 2004, 2005). However, research has been focused on ants as vectors of pathogens in many urban areas in Brazil (Costa et al. 2006; Maia et al. 2009; Santos et al. 2009).

This study evaluated the composition, fauna similarity, and guilds in different areas of urban parks located in the city of São Paulo, where the urbanization process is intense. In addition, we present the overall list of species, including those regarded as biological indicators.

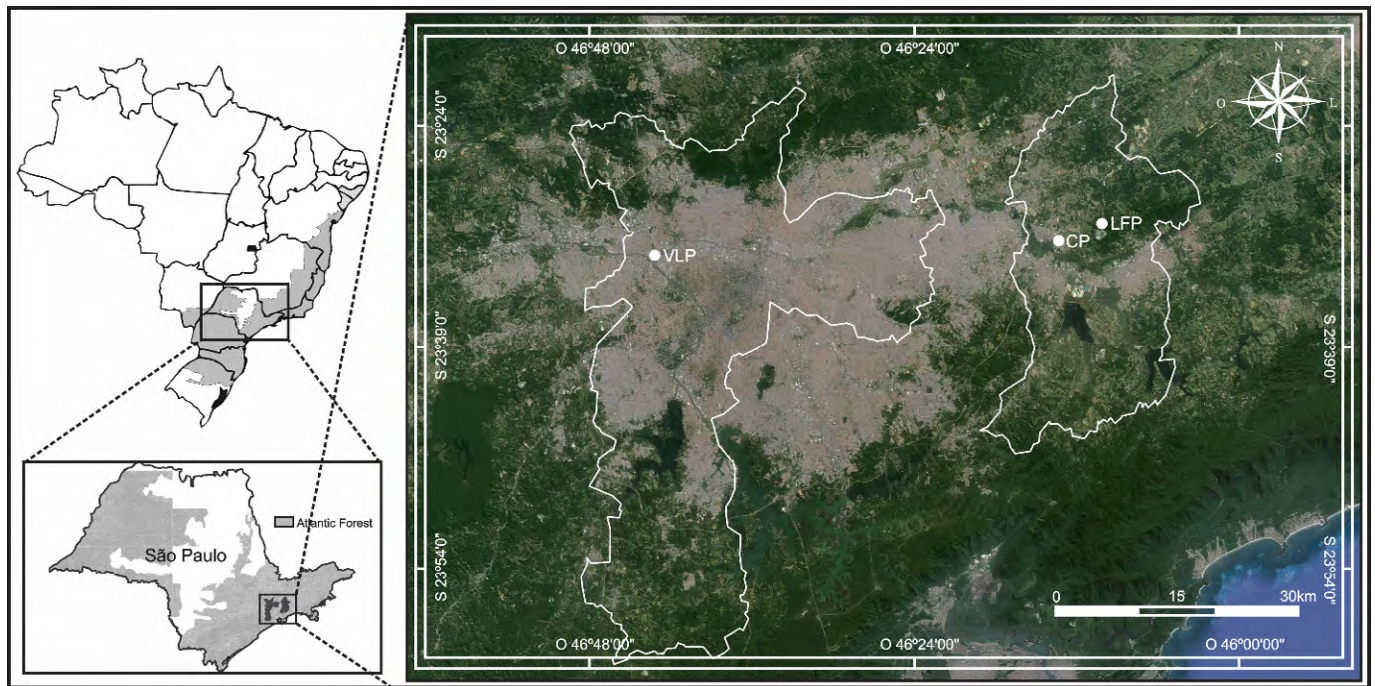


Figure 1. Location of urban parks in the state of São Paulo. CP (Centennial Park), LFP (Leon Feffer Park) and VLP (Villa Lobos Park).

MATERIALS AND METHODS

Study site

Samples were collected at urban parks in cities located in the Atlantic Forest biome, in southeastern Brazil (Fiaschi and Pirani 2009; Colombo and Joly 2010). In the city of Mogi das Cruzes, data collections were made in the Centennial Park (21.5 ha) and Leon Feffer Park (26 ha); in the city of São Paulo, they were made in the Villa Lobos Park (73.2 ha) (Figure 1). All three parks have native vegetation woods that are not open to the public.

Mogi das Cruzes and São Paulo have a population of 429,321 and 12,038,175 (IBGE 2016), respectively. The prevailing climate is high-altitude humid tropical (Cwa, Köppen climate classification [1948]) with rainy summers and dry winters. The annual average temperature is 21°C, relative humidity is 80%, and rainfall is 1.700 mm.

Data collection

Between December 2012 and February 2013, every two months, a data collection expedition was made in each urban park. Surveys were carried out during the weekends, due to the high number of visitors. We used pitfall traps, since only a thin layer of litter covers the soil in the parks (see discussion in Lopes and Vasconcelos 2008). Ten pitfall traps were distributed along six linear 100-m transects within each park, divided in three transects in public access areas and three in closed to the public areas. Therefore, six sampling expeditions were made to each urban park, totalling 180 traps, 90 in public access areas and 90 in area not open to the public. Linear transects covered different microhabitats in each park; however, they had similar characteristics between

both types of areas. The traps remained in the field for 24 hours in order to avoid their removal by visitors.

Taxonomy follows Bolton (2013). Ants were identified using Brady et al. (2014) and Baccaro et al. (2015). Taxa unidentified to species are listed by generic name followed by “sp.” in the same manner used by Suguituru et al. (2015) in a similar, but larger study. Voucher specimens were deposited in the ant fauna regional reference collection of Alto Tiete (University of Mogi das Cruzes), curated by Dr. Maria Santina de Castro Morini. Collections were approved by the Ministry of the Environment/Biodiversity Authorization and Information System (Ministério do Meio Ambiente/Sistema de Autorização e Informação em Biodiversidade - MMA/SISBIO) under license no. 34037-1.

Data analysis

The number total of species (richness) in public access areas and in area not open to the public was compared using accumulation curves (EstimateS software version 9.0; Colwell 2013) and the Mann–Whitney U test (BioEstat software version 5.0; Ayres et al. 2007). Relative frequency was calculated based on the number of occurrences of each species (presence and absence data) (Gotelli and Colwell 2001). Ant communities were described using Shannon–Wiener diversity index (H'), Equitability and Jaccard index (J). A significance level of 5% was used.

The biological indicators were characterized using the Dufrêne and Legendre (1997) Method. The analysis was made using PCORD 6.2 software (McCune and Mefford 2011), were tested using Monte Carlo randomization tests (randomization = 999, $p < 0,05$). The index varies

from 0 to 100%, with zero indicating that there is no association between the species and the environment. Species with values ranging from 50 to 70% are considered to be detectors; species with values higher than 70% are indicators; and species with 100% are exclusive to a certain habitat (Verdú et al. 2011; Leivas and Carneiro 2012). All species found were grouped into guilds on the basis of trophic preferences and foraging location, following the proposed Silvestre et al. (2003) and Brandão et al. (2009).

RESULTS

A total of 5,334 specimens were collected, and the total richness was 46 species/morphospecies. Myrmicinae (56.5%) was the richest subfamily in all parks, followed by Formicinae (17.3%). Dorylinae and Ectatomminae had a single species each (2.1%) (Table 1). The richest genus was *Pheidole*, with *Pheidole obscurithorax* (Naves, 1985), *Pheidole* sp. 21, and *Solenopsis saevissima* (Mayr, 1862) being the most frequent species. Thirteen species occurred only in public access areas; whereas 11 species, such as *Strumigenys denticulata* (Mayr, 1887),

S. louisianae (Roger, 1863) and *Odontomachus chelifer* (Latreille, 1809), were exclusively collected in areas not open to the public (Table 1).

We collected 33 species in public access areas and 34 in areas not open to the public (Figure 2). The richness did not differ ($U = 0.948$, $p > 0.05$), the similarity between the areas was low ($J = 0.386$), and areas open to the public were the most diverse ones ($H' = 1.44$) (Table 1). *Dorymyrmex brunneus* (Forel, 1908), *Linepithema neotropicum* (Wild, 2007), and *Nylanderia* sp. 1 were more frequently reported in areas with public access. *Pachycondyla striata* (Smith, 1858) and some *Pheidole* species were more frequent in areas without public access (Table 1).

Twenty-seven species (58.69%) were recorded in both areas (Table 1). *Solenopsis* sp. 2, *Solenopsis* sp. 3, and *Wasmannia auropunctata* (Roger, 1863) were indicator species of areas with and without public access (Table 1). *Brachymyrmex heeri* (Forel, 1874) (Indval = 100%) was an indicator species for areas with public access. *Acromyrmex niger* (F. Smith, 1858), *Myrmelachista catharinae* (Mayr, 1887), *Odontomachus affinis* (Guérin-Ménévilli, 1844), *Oxyepoecus myops* (Albuquerque & Brandão,

Table 1. Absolute frequency (in parentheses), relative frequency (%), and biological indicator value of ant species according to urban park areas. Species identification see appendix.

Taxonomic list	Park area		Indicator value (%)	Taxonomic list	Park area		Indicator value (%)
	Visited	Unvisited			Visited	Unvisited	
Dolichoderinae				<i>Pheidole</i> sp. 21	(10) 6.13	(10) 8.06	–
<i>Dorymyrmex brunneus</i> (Forel, 1908)	(9) 5.52	(5) 4.03	–	<i>Pheidole</i> sp. 24	(3) 1.84	(4) 3.22	–
<i>Linepithema neotropicum</i> Wild, 2007	(8) 4.91	–	50	<i>Pheidole</i> sp. 26	(1) 0.61	–	50
Formicinae				<i>Pheidole</i> sp. 36	(8) 4.91	(10) 8.06	–
<i>Camponotus crassus</i> (Mayr, 1862)	(2) 1.23	(6) 4.84	–	<i>Pheidole</i> sp. 38	–	(3) 2.42	50
<i>Camponotus rufipes</i> (Mayr, 1862)	(9) 5.52	(6) 4.84	–	<i>Pheidole</i> sp. 39	(1) 0.61	–	50
<i>Camponotus</i> sp. 5	(4) 2.45	–	–	<i>Pheidole</i> sp. 44	–	(1) 0.81	50
<i>Camponotus</i> sp. 11	(6) 3.68	–	50	<i>Solenopsis saevissima</i> (Mayr, 1862)	(10) 6.13	(10) 8.06	–
<i>Brachymyrmex admotus</i> (Mayr, 1887)	(8) 4.91	(3) 2.42	–	<i>Solenopsis</i> sp. 2	(7) 4.29	(5) 4.03	100*
<i>Brachymyrmex cordemoyi</i> (Forel, 1895)	–	(3) 2.42	–	<i>Solenopsis</i> sp. 3	(3) 1.84	(1) 0.81	100*
<i>Brachymyrmex heeri</i> (Forel, 1874)	(1) 0.61	–	100	<i>Strumigenys denticulata</i> (Mayr, 1887)	–	(1) 0.81	50
<i>Myrmelachista catharinae</i> (Mayr, 1887)	–	(1) 0.81	50	<i>Strumigenys louisianae</i> (Roger, 1863)	–	(1) 0.81	50
<i>Nylanderia</i> sp. 1	(8) 4.91	(3) 2.42	–	<i>Wasmannia affinis</i> (Santschi, 1929)	(3) 1.84	(2) 1.61	–
Dorylinae				<i>Wasmannia auropunctata</i> (Roger, 1863)	(4) 2.45	(5) 4.03	100*
<i>Labidus coecus</i> (Latreille, 1802)	(5) 3.07	(2) 1.61	–	Ponerinae			
Ectatomminae				<i>Hypoponera</i> sp. 1	(6) 3.68	–	50
<i>Gnamptogenys striatula</i> (Mayr, 1884)	(9) 5.52	(5) 4.03	–	<i>Hypoponera</i> sp. 11	(1) 0.61	–	–
Myrmicinae				<i>Odontomachus affinis</i> (Guérin-Ménévilli, 1844)	(1) 0.61	(1) 0.81	50
<i>Acromyrmex niger</i> (F. Smith, 1858)	–	(2) 1.61	50	<i>Odontomachus chelifer</i> (Latreille, 1809)	–	(4) 3.22	46.8
<i>Atta sexdens</i> (Linnaeus, 1758)	–	(2) 1.61	26.4	<i>Pachycondyla striata</i> (Smith, 1858)	(5) 3.07	(10) 8.06	–
<i>Cardiocondyla wroughtonii</i> (Forel, 1890)	(1) 0.61	–	50	Pseudomyrmecinae			
<i>Cephalotes pusillus</i> (Klug, 1824)	(1) 0.61	–	50	<i>Pseudomyrmex gracilis</i> (Ward, 1999)	–	(1) 0.81	50
<i>Cyphomyrmex</i> (gr. <i>rimosus</i>)	(1) 0.61	–	50	<i>Pseudomyrmex</i> sp. 3	(1) 0.61	–	50
<i>Oxyepoecus myops</i> (Albuquerque & Brandão, 2009)	–	(1) 0.81	50	Observed partial richness	34	33	
<i>Pheidole aberrans</i> (Mayr, 1868)	(4) 2.45	(1) 0.81	25.2	Observed total richness	46		
<i>Pheidole obscurithorax</i> (Naves, 1985)	(10) 6.13	(9) 7.26	–	Partial abundance (area)	3.081	2.253	
<i>Pheidole oxyops</i> (Forel, 1908)	(4) 2.45	(2) 1.61	–	Abundance total	5.334		
<i>Pheidole sospes</i> (Forel, 1908)	(4) 2.45	(3) 2.42	–	Diversity	1.44	1.38	
<i>Pheidole triconstricta</i> (Forel, 1886)	(5) 3.07	–	–	Equitability	0.93	0.91	
<i>Pheidole</i> sp. 5	–	(1) 0.81	50				

* Values in bold indicate association (significant value p) with the two area types.

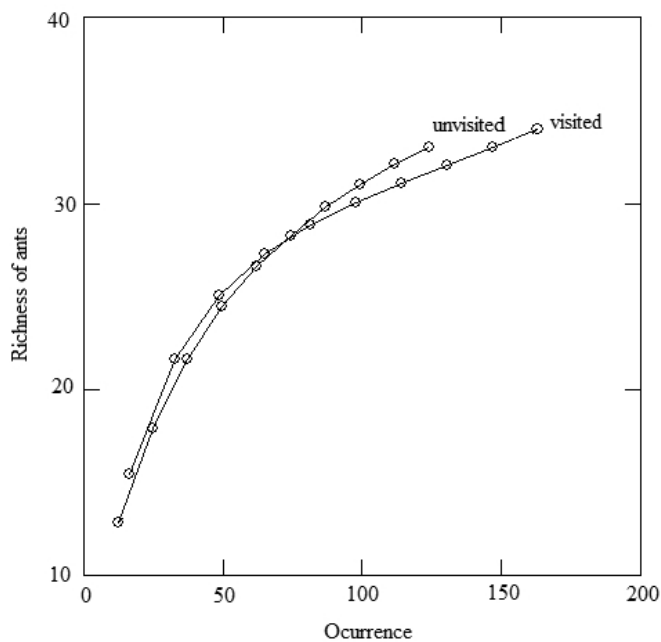


Figure 2. Comparison of the richness of ant species between urban park areas with and without public access.

2009), *Pheidole* sp. 5, *Pheidole* sp. 38, *Pheidole* sp. 44, *Pseudomyrmex gracilis* (Ward, 1999), *Strumigenys denticulata*, and *S. louisianae* (all with Indval = 50%) appeared to be indicators of areas without public access (Table 1).

A total of 13 guilds were recorded (Table 2). The soil-dominant omnivores were the richest guild and this group, included species from the genera: *Dorymyrmex*, *Camponotus*, *Pheidole*, and *Solenopsis*. The less rich guilds included the small arboreal species with massive recruitment (*M. catharinae*), opportunistic species in the soil and vegetation (*Nylanderia* sp. 1), secondary forest specialists, epigaeic army ants (*Labidus coecus* [Jurine, 1807]), forest litter predators (*Gnamptogenys striatula* [Mayr, 1884]), and Cephalotini species (Table 2). The Myrmicinae predator cryptic specialist guild was found only in areas without public access; and a single

Table 2. Richness of ant species in each guild according to urban park areas (based on pitfall sampling).

Guilds	Visited	Unvisited
1 Dominant soil omnivorous	19	17
2 Small arboreal with massive recruitment	1	–
3 Opportunistic soil and vegetation	3	3
4 Specialist minimal vegetation	–	1
5 Legion epigaeic	1	1
6 Litter predators	1	1
7 Cutter fungus-growers	–	2
8 Cephalotini	1	–
9 Cryptic Attini fungus-growers	1	–
10 Myrmicinae predator cryptic specialist	–	2
11 Cryptic predator arboreal specialist	2	2
12 Ponerinae cryptic predator specialist	2	–
13 Large predator epigaeic	2	3
14 Pseudomyrmecinae predatory arboreal agile	1	1

exotic species, *Cardiocondyla wroughtonii* (Forel, 1890), was found in area not open to the public.

DISCUSSION

Results suggest that public access in urban parks does not affect total richness of ant species that forage along the ground, but it affects species diversity. Urban parks generally have a poor phytophysiognomy due to anthropic interferences and the more open canopy. In this case, the soil is exposed to intense sunlight, which modifies the microclimate and the decomposition rates of litter and its components (Louzada et al. 1997). These factors influence food and nidification sites availability and variety that are, in part, responsible for the diversity of ants (Benson and Harada 1988; Folwer et al. 1991; Arruda et al. 2015). However, even with these negative factors that are inherent to urban parks, areas without public access provide microhabitats for Atlantic Forest litter characteristic species, according to the taxonomic list reported by Pacheco et al. (2009) and Suguituru et al. (2013, 2015).

Areas without public access support a greater number of native species, such as Ponerinae and some Myrmicinae. Thus, the proximity of natural areas and/or a native forest inside these parks can be determining factors for biodiversity maintenance in areas of urban vegetation (Pacheco and Vasconcelos 2007). Nevertheless, more generalist species might be favored by the anthropic interference in the native woods that compose urban park landscapes in the present study, and especially in public visited areas, where they were collected more frequently.

Strumigenys is a Myrmicinae genus considered to be a cryptic predator specialized in feeding on springtails and other small arthropods (Delabie et al. 2000; Brandão et al. 2003). *Strumigenys* species have been reported to occur in litter from the best-preserved areas of Atlantic Forest (Suguituru et al. 2013, 2015). On the other hand, they were also collected in other urban parks in São Paulo (Ribeiro et al. 2012) and in urban squares surrounded by native vegetation (Suguituru et al. 2015). This suggests that these species can also live in environments sinantropic (Lattke and Goitía 1997). In the present study, *S. denticulata* and *S. louisianae* were classified as biological indicators of areas without public access. Our results corroborate the findings of Pacheco and Vasconcelos (2007) who reported *Brachymyrmex* species as biological indicators of urban parks as well as commercial and residential areas with intense public access.

A low number of exotic species was recorded compared with the results of other studies (see Ribeiro et al. 2012; Melo et al. 2014), although the parks are located in highly anthropogenic environments. *Cardiocondyla wroughtonii* originated in Asia (Bueno and Campos-Farinha 1999) and has the potential to compete with and reduce the

native fauna (Pacheco and Vasconcelos 2007; Hoffmann 2010). In the present study, *C. wroughtonii* was also classified as a biological indicator. Future monitoring of this population is important because, in 2002, this species was not included in the list of important urban ants in southeast Brazil (Campos-Farinha et al. 2002).

Moreover, the monitoring of *W. auropunctata*, a species originally from the Neotropical region, is equally important, it is listed as one of the '100 of the World's Worst Invasive Alien Species' (Lowe et al. 2000). This species is strongly associated with the urban parks we studied, which supports the results of Ribeiro et al. (2012), and with other urban areas (Campos-Farinha et al. 2002). It is known as the "little fire ant" because of its painful sting, and similar to *Solenopsis invicta* Buren 1972 (red fire ant), it is a public health problem (Souza 2007; More et al. 2008). *Wasmannia auropunctata* has an aggressive behavior toward the native fauna and conquers new territories through budding (polydomy) and intranidal mating (Souza 2007). These behaviors are common in invasive species (Passera 1994).

This study adds two genera and 11 species to the taxonomic list of urban forested areas in Mogi das Cruzes (Souza et al. 2012) and approximately 28 species to the urban parks in São Paulo (Ribeiro et al. 2012). It corroborates the study of Ribeiro et al. (2012) with respect to the dominance of *Pheidole* and *Solenopsis* species, and it demonstrates that the urban parks share many ant species found in the litter layer of preserved areas of the Atlantic Forest, especially in areas not open to the public.

ACKNOWLEDGEMENTS

The authors thank CNPq (process no. 153754/2012-5; no. 138589/2012-7 and no. 302363/2012-2) for their financial support; and SISBIO (case no. 34037-1) for the collecting license.

LITERATURE CITED

- Albuquerque, N.L. and C.R.F. Brandão. A revision of the Neotropical Solenopsidini ant genus *Oxyepoecus* Santschi, 1926 (Hymenoptera: Formicidae: Myrmicinae). Key for species and revision of the *Rastratus* species-group. *Papéis Avulsos de Zoologia* (São Paulo) 49(23): 289–309. <http://www.scielo.br/pdf/paz/v49n23/v49n23.pdf>
- Alonso, L.E. and D. Agosti. 2000. Biodiversity studies, monitoring, and ants: an overview; pp. 1–8, in: D. Agosti, J.D. Majer, L.E. Alonso and T.R. Schultz (eds.). *Ants: standard methods for measuring and monitoring biodiversity*. Washington: Smithsonian Institution Press.
- Arruda, F.V., M.A. Pesquero, D.G. Marcelino, G.A. Leite, J.H.C. Delabie and R. Fagundes. 2015. Size and condition of bamboo as structural factors behind the vertical stratification of the bamboo-nesting ant community. *Insectes Sociaux* 63(1): 99–107. doi: [10.1007/s00040-015-0440-4](https://doi.org/10.1007/s00040-015-0440-4)
- Ayres, M., J.R.M. Ayres, D.L. Ayres and A.S. Santos 2007. *BioEstat 5.0: aplicações estatísticas nas áreas de Ciências Biológicas e Médicas*. Belém: Instituto do desenvolvimento Sustentável Mamirauá. IDS/MCT/CNPQ. 367 pp.
- Baccaro, F.B., R.M. Feitosa, F. Fernandez, I.O. Fernandes, T.J. Izzo, J.L.P. Souza and R. Solar. 2015. *Guia para os gêneros de formigas do Brasil*. 1nd ed. Manaus: Editora INPA. 388 pp. https://ppbio.inpa.gov.br/sites/default/files/Livro_Formigas_2015_0.pdf
- Benson, W.W. and A.Y. Harada. 1988. Local diversity of tropical and temperate ant faunas (Hymenoptera: Formicidae). *Acta Amazon* 18(3–4): 275–289.
- Bestelmeyer, B.T., D. Agosti, L.E. Alonso, C.R.F. Brandão, W.L. Brown Jr., J.H.C. Delabie and R. Silvestre. 2000. Field techniques for the study of ground dwelling ants: an overview, description and evaluation; pp. 122–144, in: D. Agosti, J.D. Majer, L.E. Alonso and T.R. Schultz (eds.). *Ants: Standard methods for measuring and monitoring biodiversity*. Washington and London: Smithsonian Institution Press.
- Bolton, B. 2013. AntWeb: ants of Bolton World Catalog. Accessed at <http://www.antweb.org/world.jsp>, 06 October 2015.
- Brady, S., B. Fisher, T.R. Schultz and P. Ward. 2014. The rise of army ants and their relatives: diversification of specialized predatory doryline ants. *BMC Evolutionary Biology* 14: 93. doi: [10.1186/1471-2148-14-93](https://doi.org/10.1186/1471-2148-14-93)
- Brandão, C.R.F., R.R. Silva and J.H.C. Delabie. 2009. Formigas (Hymenoptera); pp. 323–370, in: A.R., Panizzi and J.R.P. Parra (eds). *Bioecologia e nutrição de insetos*. Brasília: Embrapa Informação Tecnológica.
- Bueno, O.C. and A.E.C. Campos-Farinha. 1999. As formigas domésticas; pp. 135–180, in: F.A.M. Mariconi (org.). *Insetos e outros invasores de residências*. Piracicaba: SP, FEALQ.
- Campos-Farinha, A.E.C., O.C. Bueno, M.C.G. Campos and L.M. Kato. 2002. As formigas urbanas no Brasil: Retrospecto. *Biológico* 64(2): 129–133. http://www.biologico.agricultura.sp.gov.br/docs/bio/v64_2/farinha.pdf
- Costa, S.B., A. Pelli, G.P. Carvalho, A.G. Oliveira, P.R. Silva, M.M. Teixeira, E. Martins, A.P.S. Terra, E.M. Resende, C.C.H.B. Oliveira and C.A. Moraes. 2006. Formigas como vetores mecânicos de microorganismos no hospital escola da Universidade Federal do triângulo mineiro. *Revista da Sociedade Brasileira de Medicina Tropical* 39(6): 527–529. doi: [10.1590/S0037-8682006000600003](https://doi.org/10.1590/S0037-8682006000600003)
- Colombo, A.F. and C.A. Joly. 2010. Brazilian Atlantic Forest lato sensu: the most ancient Brazilian forest, and a biodiversity hotspot, is highly threatened by climate change. *Brazilian Journal of Biology* 70: 697–708. doi: [10.1590/S1519-69842010000400002](https://doi.org/10.1590/S1519-69842010000400002)
- Colwell, R.K. 2013. EstimateS: Statistical estimation of species richness and shared species from samples. Version 9.0. Accessed at <http://viceroy.eeb.uconn.edu/estimates/>, 26 March 2015.
- Delabie, J.H.C., D. Agosti and I.C. Nascimento. 2000. Litter and communities of the Brazilian Atlantic rain forest region; pp. 1–18, in: D. Agosti, I.D. Majer, L.T. Alonso and T. Schultz (eds.). *Measuring and monitoring biological diversity: standard methods for ground living ants*. Washington: Smithsonian Institution.
- Dufrêne, M. and P. Legendre. 1997. Species assemblages and indicator species: the need for a flexible asymmetrical approach. *Ecological Monographs* 67: 345–366. doi: [10.1890/0012-9615\(1997\)067\[0345:SAIST\]2.0.CO;2](https://doi.org/10.1890/0012-9615(1997)067[0345:SAIST]2.0.CO;2)
- Fabricius, J.C. 1804. *Systema Piezatorum secundum ordines, genera, species, adiectis synonymis, locis, observationibus, descriptionibus*. Brunsvigae: Ioh. Christ. Fabricii. 30 pp. doi: [10.5962/bhl.title.10490](https://doi.org/10.5962/bhl.title.10490)
- Faeth, S.H., C. Bang and S. Saari. 2011. Urban biodiversity: patterns and mechanisms. *Annals of New York Academy of Sciences* 1223: 69–81. doi: [10.1111/j.1749-6632.2010.05925.x](https://doi.org/10.1111/j.1749-6632.2010.05925.x)
- Fiaschi, P. and J.R. Pirani. 2009. Review of plant biogeographic studies in Brazil. *Journal of Systematics and Evolution* 47: 1–20. doi: [10.1111/j.1759-6831.2009.00046.x](https://doi.org/10.1111/j.1759-6831.2009.00046.x)
- Folgarait, P.J. 1998. Ant biodiversity and its relationship to ecosystem functioning: a review. *Biodiversity Conservation* 7(9): 1221–1244. doi: [10.1023/A:1008891901953](https://doi.org/10.1023/A:1008891901953)

- Forel, A. 1874. Les fourmis de la Suisse. Systématique, notices anatomiques et physiologiques, architecture, distribution géographique, nouvelles expériences et observations de mœurs. *Neue Denkschriften der Allgemeinen Schweizerischen Gesellschaft für die Gesamten Naturwissenschaften* 26: 1–452.
- Forel, A. 1886. Espèces nouvelles de fourmis américaines. *Annales de la Société Entomologique de Belgique* 30: xxxviii–xlix.
- Forel, A. 1890. *Aenictus-Typhlatta* découverte de M. Wroughton. Nouveaux genres de formicides. *Annales de la Société Entomologique de Belgique* 34: cii–cxiv. <http://antcat.org/documents/1325/3927.pdf>
- Forel, A. 1895. Nouvelles fourmis de diverses provenances, surtout d’Australie. *Annales de la Société Entomologique de Belgique* 39: 41–49. <http://antcat.org/documents/1357/3954.pdf>
- Forel, A. 1908. Ameisen aus Sao Paulo (Brasilien), Paraguay, etc. gesammelt von Prof. Herm. v. Ihering, Dr. Lutz, Dr. Fiebrig, etc. *Verhandlungen der Kaiserlich-Königlichen Zoologisch-Botanischen Gesellschaft in Wien* 58: 340–418.
- Fowler, H.G., L.C. Forti, C.R.F. Brandão, J.H.C. Delabie and H.L. Vasconcelos. 1991. Ecologia nutricional de formigas; pp. 131–223, in: A.R. Panizzi and J.R.P. Parra (eds.). *Ecologia nutricional de insetos e suas implicações no manejo de pragas*. São Paulo: Editora Manole.
- Gotelli, N. and R.K. Colwell. 2001. Quantifying biodiversity: procedures and pitfalls in the measurement and comparison of species richness. *Ecology Letters* 4: 379–391. doi: [10.1046/j.1461-0248.2001.00230.x](https://doi.org/10.1046/j.1461-0248.2001.00230.x).
- IBGE. 2016. Instituto Brasileiro de Geografia e Estatística Estimativas da população residente nos municípios brasileiros. Accessed at <http://cidades.ibge.gov.br/xtras/home.php>, 06 April 2015.
- Klug, F. 1824. *Entomologische Monographien*. Berlin: Reimer. 242 pp.
- Koh, L.P. and N.S. Sodhi. 2004. Importance of reserves, fragments, and parks for butterfly conservation in a tropical urban landscape. *Ecological Applications*, 14: 1695–1708. <http://www.jstor.org/stable/4493684>
- Köppen, W. 1948. *Climatologia, con un estudio de los climas de la tierra*. México: Fondo de Cultura Económica. 478 pp.
- Kowarick, I. 2011. Novel urban ecosystems, biodiversity, and conservation. *Environmental Pollution* 159: 1974–1983. <http://www.sciencedirect.com/science/article/pii/S0269749111000960>
- Latreille, P.A. 1802. *Histoire naturelle générale et particulière des Crustacés et des insectes*. Tome 3. Familles naturelles des genres. Paris: F. Dufart. 467 pp. doi: [10.5962/bhl.title.15764](https://doi.org/10.5962/bhl.title.15764)
- Latreille, P.A. 1809. *Genera crustaceorum et insectorum secundum ordinem naturalem in familias disposita, iconibus exemplisque plurimis explicata*. Tomus 4. Parisiis et Argentorati [Paris and Strasbourg]: A. Koenig. 399 pp.
- Lattke, J.E. and W. Goitia. (1997). El género *Strumigenys* (Hymenoptera: Formicidae) em Venezuela. *Coldesia* 19(3): 367–396.
- Leivas, F.W.T. and E. Carneiro. 2012. Utilizando os hexápodes (Arthropoda, Hexapoda) como bioindicadores na biologia da conservação: avanços e perspectivas. *Estudos de Biologia* 34(83): 203–213.
- Leung, Yu-Fai and J.L. Marion. 2000. Recreation impacts and management in wilderness: A state-of-knowledge review. *USDA Forest Service Proceedings* 5: 23–48. http://www.fs.fed.us/rm/pubs/rmrs_p015_5/rmrs_p015_5_023_048.pdf
- Linnaeus, C. 1758. *Systema naturae per regna tria naturae, secundum classes, ordines, genera, species, cum characteribus, differentiis, synonymis, locis*. Tomus I. Editio decima, reformata. Holmiae [= Stockholm]: L. Salvii. 824 pp. doi: [10.5962/bhl.title.542](https://doi.org/10.5962/bhl.title.542)
- Lopes, C.T. and H.L. Vasconcelos. 2008. Evaluation of three methods for sampling ground-dwelling ants in the Brazilian Cerrado. *Neotropical Entomology* 37(4): 399–405. doi: [10.1590/S1519-566X2008000400007](https://doi.org/10.1590/S1519-566X2008000400007)
- Lopez-Moreno, I.R., M.R. Díaz-Betancourt and T.S. Landa. 2003. Insectos sociales em ambientes antropizados: las hormigas de La ciudad de Coatepec, Veracruz, México. *Sociobiology* 42(3): 605–622. <http://cat.inist.fr/?aModele=afficheN&cpsidt=15263141>
- Louzada, J.N., J. Schoederer and P. De Marco. 1997. Litter decomposition in semideciduous forest and *Eucalyptus* spp. crop in Brazil: a comparison. *Forest ecology and Management* 94(1): 31–36. doi: [10.1016/S0378-1127\(96\)03986-2](https://doi.org/10.1016/S0378-1127(96)03986-2)
- Lowe, S., M. Browne, S. Boudjelas and M. De Poorter. 2000. 100 of the world’s worst invasive alien species: a selection from the global invasive species database. Auckland: Hollands Printing. 12 pp.
- Maia, Z.P.G.; A.B. Gusmão and T.F. Barros. 2009. Formigas como fator de risco para infecções nosocomiais. *Revista de Saúde e Biologia* 4(2): 47–51. <http://revista.grupointegrado.br/revista/index.php/sabios2/article/view/151/279>
- Mayr, G. 1862. *Myrmecologische Studien*. *Verhandlungen der Kaiserlich-Königlichen Zoologisch-Botanischen Gesellschaft in Wien* 12: 649–776. <http://antcat.org/documents/2124/4445.pdf>
- Mayr, G. 1868. *Formicidae novae Americanae collectae a Prof. P. de Strobel*. *Annuario della Società dei Naturalisti e Matematici, Modena* 3: 161–178. <http://antcat.org/documents/2148/4369.pdf>
- Mayr, G. 1884. [Untitled. Descriptions of eight new species]; pp. 31–38, in: O. Radoszkowsky (ed.). *Fourmis de Cayenne Française*. *Trudy Russkago Entomologicheskago Obshchestva* 18. <http://antcat.org/references/127199>
- Mayr, G. 1887. *Südamerikanische Formiciden*. *Verhandlungen der Kaiserlich-Königlichen Zoologisch-Botanischen Gesellschaft in Wien* 37: 511–632. <http://antcat.org/documents/2130/4384.pdf>
- McCune, B. and M.J. Mefford. 2011. PC-ORD. Multivariate analysis of ecological data. Version 6.2, MjM software design. Gleneden Beach, Oregon, USA. Accessed at <https://www.pcord.com/>, 20 March 2015.
- McKey, D., S. Rostain, J. Iriarte, B. Glaser, J.J. Birk, I. Holst and D. Renard. 2010. Pre-Columbian agricultural landscapes, ecosystem engineers, and self-organized patchiness in Amazonia. *PNAS* 107: 7823–7828. doi: [10.1073/pnas.0908925107](https://doi.org/10.1073/pnas.0908925107)
- McIntyre, N. 2000. Ecology of urban arthropods: a review and a call to action. *Annals of the Entomological Society of America* 93(4): 825–835. doi: [10.1603/0013-8746\(2000\)093\[0825:EOUAAAR\]2.0.CO;2](https://doi.org/10.1603/0013-8746(2000)093[0825:EOUAAAR]2.0.CO;2)
- McIntyre, N.E., J. Rango, W.F. Fagan and S.H. Faeth. 2001. Ground arthropod community structure in a heterogeneous urban environment. *Landscape and urban planning* 52: 257–274. doi: [10.1016/S0169-2046\(00\)00122-5](https://doi.org/10.1016/S0169-2046(00)00122-5)
- Melo, T.S.; M.C.L. Peres, J.L. Chavari, A.D. Brescovit and J.H.C. Delabie. 2014. Ants (Formicidae) and spiders (Aaneae) listed from the metropolitan region of Salvador, Brasil. *Check List* 10(2): 355–365. doi: [10.15560/10.2.355](https://doi.org/10.15560/10.2.355)
- More D.R., R.E. Kohlmeier and D.R. Hoffman D.R. 2008. Fatal anaphylaxis to indoor native fire ant stings in an infant. *The American Journal of Forensic Medicine and Pathology* 29: 62–63. doi: [10.1097/PAF.0b013e3181651b53](https://doi.org/10.1097/PAF.0b013e3181651b53)
- Murphy, D.D. 1988. Desafios à diversidade biológica em áreas urbanas; pp. 89–97, in: E.O. Wilson. (ed.). *Biodiversidade*. Rio de Janeiro: Editora Nova Fronteira.
- Naves, M.A. 1985. A monograph of the genus *Pheidole* in Florida, USA (Hymenoptera: Formicidae). *Insecta Mundi* 1: 53–90. <http://antcat.org/documents/2272/4268.pdf>
- Orsolon-Souza, G., C.E.L. Esbérard, A.J. Mayhé-Nunes, A.B. Vargas, S. Veiga-Ferreira and E. Folly-Ramos. 2011. Comparison between Winkler’s extractor and pitfall traps to estimate leaf litter ants richness (Formicidae) at a rainforest site in southeast Brazil. *Brazilian Journal of Biology* 71(4): 873–880. doi: [10.1590/S1519-69842011000500008](https://doi.org/10.1590/S1519-69842011000500008)
- Pacheco, R. and H.L. Vasconcelos. 2007. Invertebrate conservation in urban areas: Ants in Brazilian cerrado. *Landscape and Urban*

- Planning 81: 193–199. doi: [10.1016/j.landurbplan.2006.11.004](https://doi.org/10.1016/j.landurbplan.2006.11.004)
- Pacheco, R.; R.R. Silva, M.S.C. Morini and C.R.F. Brandão. 2009. A comparison of the leaf-litter ant fauna in a secondary Atlantic Forest with an adjacent pine plantation in southeastern Brazil. *Neotropical Entomology*. 38(1): 55–65. doi: [10.1590/S1519-566X2009000100005](https://doi.org/10.1590/S1519-566X2009000100005)
- Parr, C.L. and S.L. Chown. 2001. Inventory and bioindicator sampling: testing pitfall and Winkler methods with ants in South African savanna. *Journal of Insect Conservation* 5: 27–36. <http://link.springer.com/article/10.1023%2FA%3A1011311418962>
- Passera, L. 1994. Characteristics of tramp species; pp. 23–43, in: Williams, D.F. (ed.). *Exotic ants: biology, impact and control of introduced species*. Colorado: Westview Press.
- Pearson, D.L. 1994. Selecting indicator taxa for the quantitative assessment of biodiversity. *Philosophical Transactions of the Royal Society of London* 345: 75–79. doi: [10.1098/rstb.1994.0088](https://doi.org/10.1098/rstb.1994.0088)
- Ribeiro, F.M., N. Sibinel, G. Ciochetti and A.E.C. Campos. 2012. Analysis of ant communities comparing two methods for sampling ants in an urban park in the city of São Paulo, Brazil. *Sociobiology* 59(1): 971–984. <http://hdl.handle.net/11449/20548>
- Roger, J. 1863. Die neu aufgeführten Gattungen und Arten meines Formiciden-Verzeichnisses nebst Ergänzung einiger früher gegebenen Beschreibungen. *Berliner Entomologische Zeitschrift* 7: 131–214. <http://antcat.org/documents/2445/4101.pdf>
- Rosa, A.G. and I. Schiavini. 2006. Estrutura da comunidade arbórea em um remanescente florestal urbano (Parque do Sabiá, Uberlândia, MG). *Bioscience Journal* 22(1): 151–162. <http://www.seer.ufu.br/index.php/biosciencejournal/article/view/6652/4379>
- Santschi, F. 1929. Nouvelles fourmis de la République Argentine et du Brésil. *Anales de la Sociedad Científica Argentina* 107: 273–316. <http://bio1.elmira.edu/ent/nmnhtypedb/images/pdfs/3636.pdf>
- Santos, P.F., A.R. Fonseca and N.M. Sanches. 2009. Formigas (Hymenoptera: Formicidae) como vetores de bactérias em dois hospitais do município de Divinópolis, Estado de Minas Gerais. *Revista da Sociedade Brasileira de Medicina* 42(5): 565–569. doi: [10.1590/S0037-86822009000500016](https://doi.org/10.1590/S0037-86822009000500016)
- Silvestre, R.; C.R.F. Brandão and R.R. Silva. 2003. Grupos funcionales de hormigas: El caso de los gremos del Cerrado; pp. 101–136, in: Fernandez, F. (ed) *Introducción a las hormigas de la Región Neotropical*. Bogotá: Instituto de Investigación de Recursos Biológicos Alexander von Humboldt.
- Shochat, E., S.B. Lerman, J.M. Anderies, P.S. Warren, S.H. Faeth and C.H. Nilon. 2010. Invasion, competition, and biodiversity loss in urban ecosystems. *BioScience* 60: 199–208. doi: [10.1525/bio.2010.60.3.6](https://doi.org/10.1525/bio.2010.60.3.6)
- Smith, F. 1858. *Catalogue of hymenopterous insects in the collection of the British Museum. Part VI. Formicidae*. London: British Museum. 216 pp. <http://antcat.org/documents/2734/8127.pdf>
- Souza, A.L.B. 2007. Caracterização comportamental de *Wasmannia auropunctata* (Myrmicinae: Blepharidattini). *O Biológico* 69(2): 153–156. http://www.biologico.sp.gov.br/docs/bio/suplementos/v69_supl_2/p153-156.pdf
- Souza, D.R., S.G. Santos, C.B. Munhae and M.S.C. Morini. 2012. Diversity of epigeal ants (Hymenoptera: Formicidae) in urban areas of Alto Tietê. *Sociobiology* 59(3): 703–717. <http://periodicos.uefs.br/index.php/sociobiology/article/view/543>
- Suguituru, S.S., D.R. Souza, C.B. Munhae, R. Pacheco and M.S.C. Morini. 2013. Diversidade e riqueza de formigas (Hymenoptera: Formicidae) em remanescentes de Mata Atlântica na Bacia Hidrográfica do Alto Tietê, SP. *Biota Neotropica* 13(2): 141–152. <http://www.biotaneotropica.org.br/v13n2/pt/fullpaper?bn00813022013+pt>
- Suguituru, S.S., M.S.C. Morini, R.M. Feitosa and R.R. Silva. 2015. *Formigas do Alto Tietê*. Bauru: Canal 6 editora. 456 pp. <http://canal6.com.br/formigas/>
- Verdú, J.R., C. Num and O. Hernández-Cuba. 2011. The influence of landscape structure on ants and dung beetles diversity in a mediterranean savanna – forest ecosystem. *Ecological Indicators* 11: 831–839. doi: [10.1016/j.ecolind.2010.10.011](https://doi.org/10.1016/j.ecolind.2010.10.011)
- Wild, A.L. 2007. Taxonomic revision of the ant genus *Linepithema* (Hymenoptera: Formicidae). University of California Publications in Entomology 126: 1–151. <http://antcat.org/documents/4102/21156.pdf>
- Yamaguchi, T. 2004. Influence of urbanization on ant distribution in parks of Tokyo and Chiba City, Japan. I. Analysis of ant species richness. *Entomological Science* 19: 209–216. doi: [10.1111/j.1440-1703.2003.00625.x](https://doi.org/10.1111/j.1440-1703.2003.00625.x)
- Yamaguchi, T. 2005. Influence of urbanization on ant distribution in parks of Tokyo and Chiba City, Japan. I. Analysis of species. *Entomological Science* 8(1): 17–25. doi: [10.1111/j.1479-8298.2005.00096.x](https://doi.org/10.1111/j.1479-8298.2005.00096.x)

Author contributions: DRSC confirmed the identification of the specimens, analyzed the data, and wrote the manuscript; OGMS collected and identified the ant specimens and tabulated the data; LMS collected and identified the ant specimens and tabulated the data; and MSCM coordinated the research, confirmed the identification of the specimens, and reviewed the manuscript.

Received: 7 November 2015

Accepted: 15 July 2016

Academic editor: Joe MacGown

APPENDIX

Photos and identification of the species collected in the parks studied. The vouchers were deposited in the ant fauna reference collection of Alto Tietê (University of Mogi das Cruzes). Photos: Suguituru et al. (2015).



Figure A1. Subfamily Dolichoderinae: *Dorymyrmex brunneus*.



Figure A2. Subfamily Dolichoderinae: *Labidus coecus*.



Figure A5. Subfamily Formicinae: *Brachymyrmex cordemoyi*



Figure A3. Subfamily Dolichoderinae: *Linepithema neotropicum*.



Figure A6. Subfamily Formicinae: *Brachymyrmex heeri*.



Figure A4. Subfamily Formicinae: *Brachymyrmex admotus*.



Figure A7. Subfamily Formicinae *Camponotus crassus*.



Figure A8. Subfamily Formicinae: *Camponotus rufipes*.



Figure A11. Subfamily Formicinae: *Myrmelachista catharinae*.



Figure A9. Subfamily Formicinae: *Camponotus* sp. 5.



Figure A12. Subfamily Formicinae: *Nylanderia* sp. 1.



Figure A10. Subfamily Formicinae: *Camponotus* sp. 11.



Figure A13. Subfamily Ectatomminae: *Gnamptogenys striatula*.



Figure A14. Subfamily Subfamily Myrmicinae: *Acromyrmex niger*.



Figure A17. Subfamily Myrmicinae: *Cephalotes pusillus*.



Figure A15. Subfamily Myrmicinae: *Atta sexdens*.



Figure A18. Subfamily Myrmicinae: *Cyphomyrmex (gr rimosus)*.



Figure A16. Subfamily Myrmicinae: *Cardiocondyla wroughtonii*.



Figure A19. Subfamily Myrmicinae: *Oxyepoecus myops*.



Figure A20. Subfamily Myrmicinae: *Pheidole aberrans*.



Figure A23. Subfamily Myrmicinae: *Pheidole sospes*.



Figure A21. Subfamily Myrmicinae: *Pheidole obscurithorax*.



Figure A24. Subfamily Myrmicinae: *Pheidole* sp. 5.



Figure A22. Subfamily Myrmicinae: *Pheidole oxyops*.



Figure A25. Subfamily Myrmicinae: *Pheidole* sp. 21.



Figure A26. Subfamily Myrmicinae: *Pheidole* sp. 24.



Figure A29. Subfamily Myrmicinae: *Pheidole* sp. 38.



Figure A27. Subfamily Myrmicinae: *Pheidole* sp. 26.



Figure A30. Subfamily Myrmicinae: *Pheidole* sp. 39.



Figure A28. Subfamily Myrmicinae: *Pheidole* sp. 36.



Figure A31. Subfamily Myrmicinae: *Pheidole* sp. 44.



Figure A32. Subfamily Myrmicinae: *Pheidole* sp. 44.



Figure A35. Subfamily Myrmicinae: *Solenopsis* sp. 3.



Figure A33. Subfamily Myrmicinae: *Solenopsis saevissima*.



Figure A36. Subfamily Myrmicinae: *Strumigenys denticulata*.



Figure A34. Subfamily Myrmicinae: *Solenopsis* sp. 2.



Figure A37. Subfamily Myrmicinae: *Strumigenys louisianae*.



Figure A38. Subfamily Myrmicinae: *Wasmannia affinis*.



Figure A41. Subfamily Ponerinae: *Odontomachus affinis*.



Figure A39. Subfamily Ponerinae: *Hypoponera* sp. 1.



Figure A42. Subfamily Ponerinae: *Odontomachus chelifer*.



Figure A40. Subfamily Ponerinae: *Hypoponera* sp. 11.



Figure A43. Subfamily Ponerinae: *Pachycondyla striata*.



Figure A44. Subfamily Pseudomyrmecinae: *Pseudomyrmex gracilis*.



Figure A45. Subfamily Pseudomyrmecinae: *Pseudomyrmex* sp. 3.