

# EOSC ENTRUST WP13 Architecture

## 2. Objectives and architecture

EOSC-ENTRUST Blueprint Roadmap Workshop

Heikki Lehväslaiho, CSC , FI, 2024-05-07

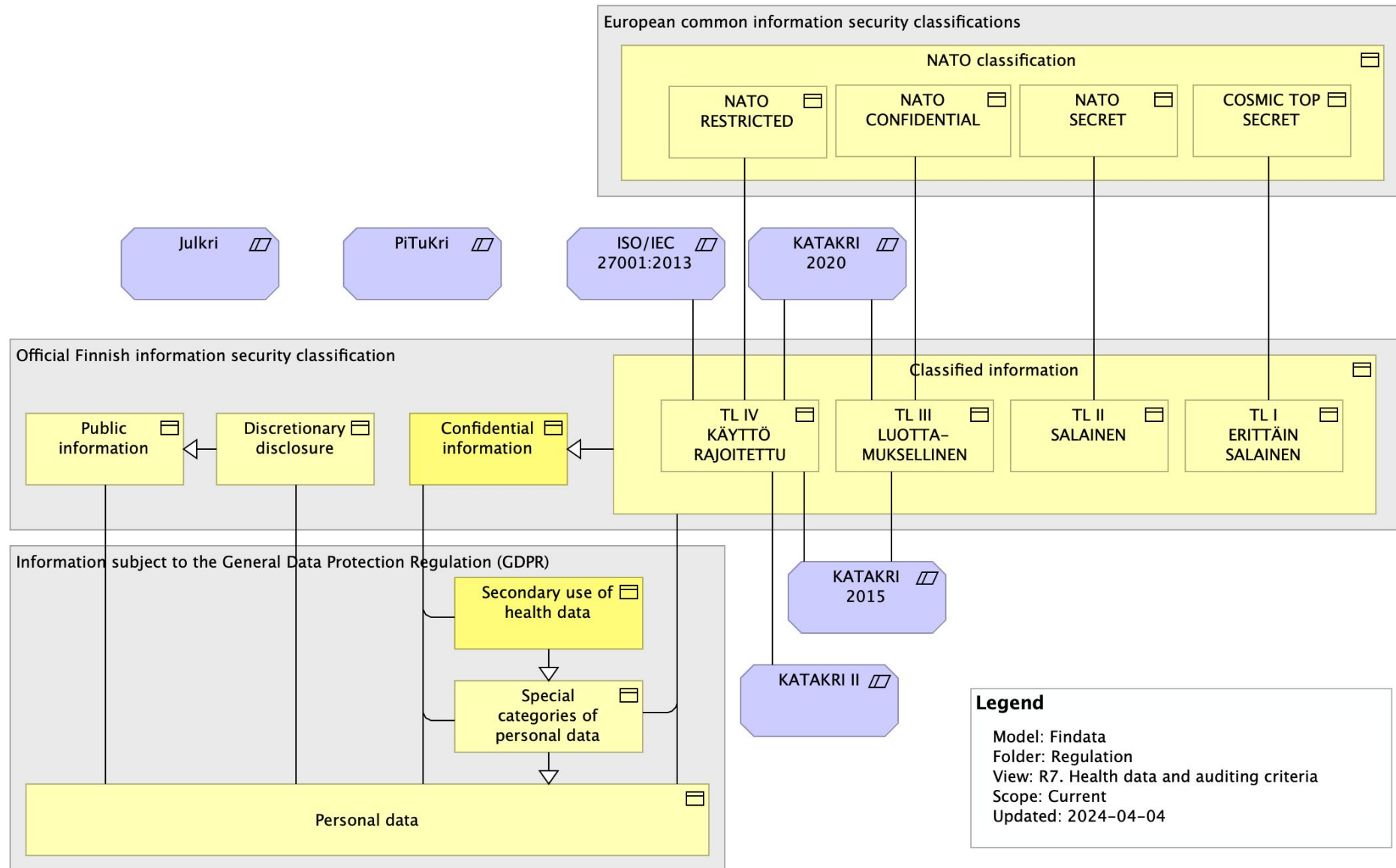


Funded by  
the European Union

# The main challenge:

- The lack of detailed European criteria for secondary use of sensitive data
  - We only have a plethora of national security criteria that target secret, not sensitive, data.
  - These criteria do not have a concept of enabling data use.
  - How to find the language to describe the problem and its recommended solutions precisely but not restrictively?
  - How to define requirements so that they cover academic research on sensitive data as well as more tightly regulated health data research?

# The current Finnish data security framework



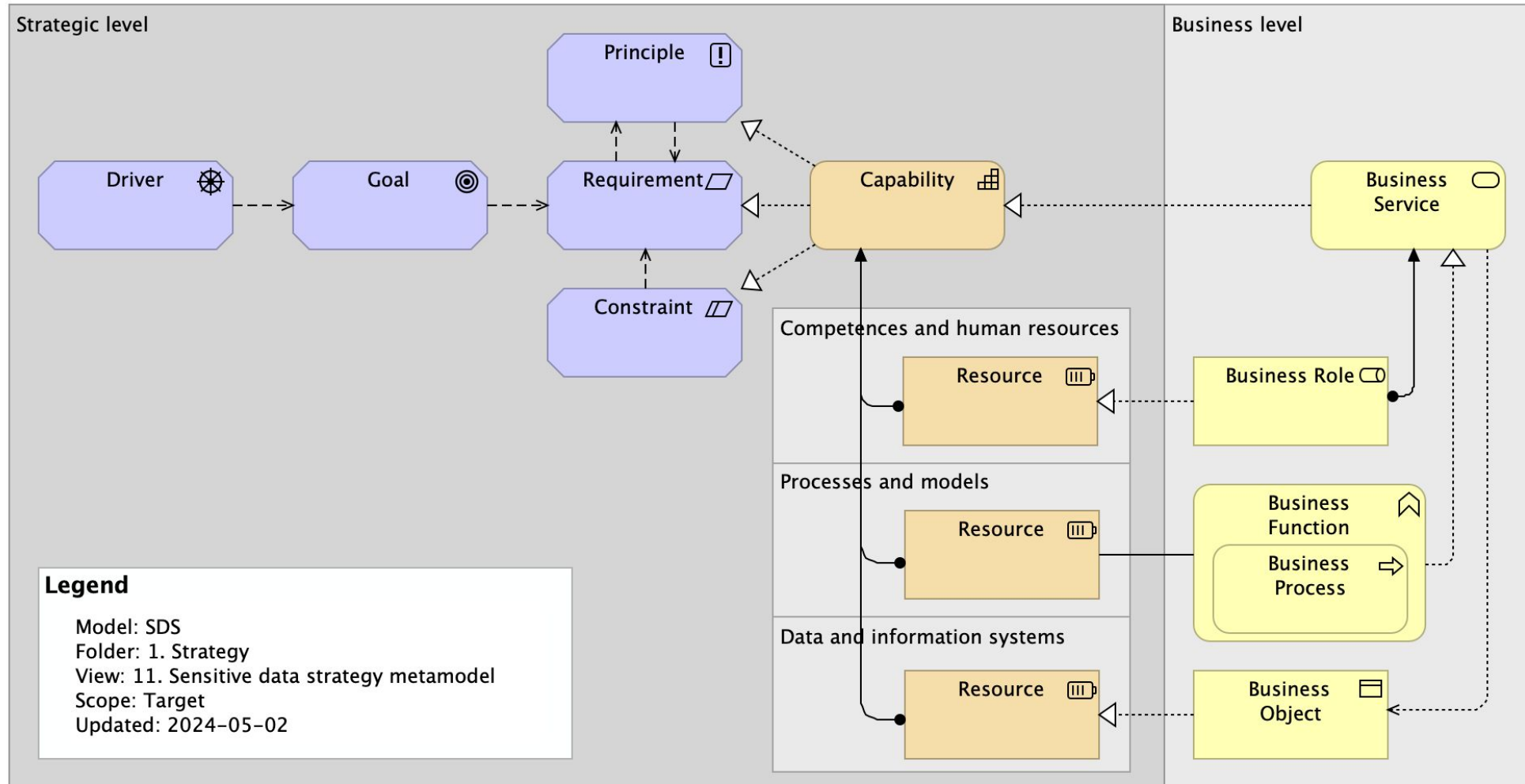
# Tool: Enterprise Architecture

- Use a formal graphical architecture language
- Enterprise Architecture (EA): [Archimate™ 3.2 standard](#)
- [Archi – Open Source ArchiMate Modelling](#)
- Think it as logic programming with a rich graphical syntax
- Needs textual explanations tying graphs together
- Used in e.g. the [SATRE project](#)

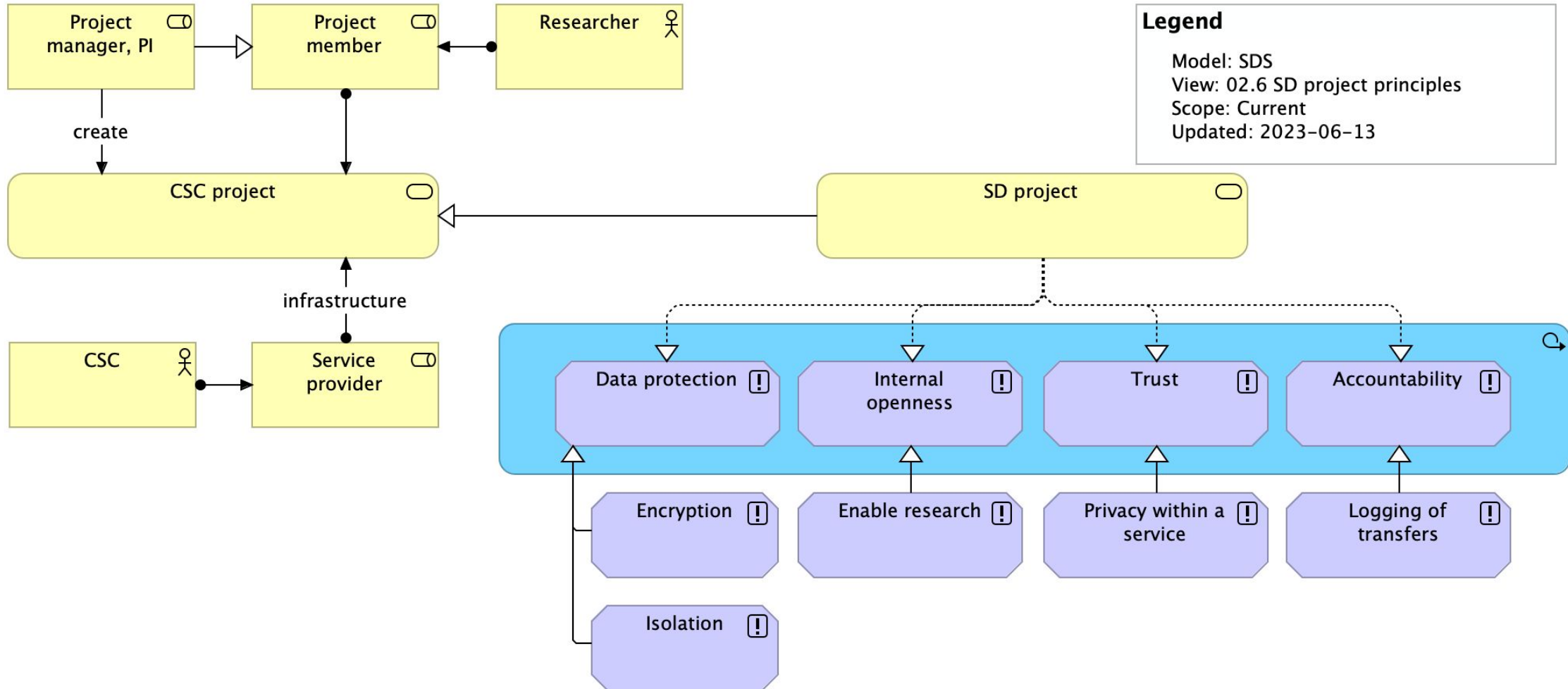
# EA approach:

- Start architecture from strategy through strategic goals leading to restrictions, applying principles to define capabilities and required resources
  - Existing and future business and application level components will serve as examples.
- Focus on the most fundamental component: sensitive data
- Capabilities (service classes) defined in the 1+MG Genomes project are a good starting point to describe SPE requirements with technical and organisational measures (TOMs) and interoperability needed

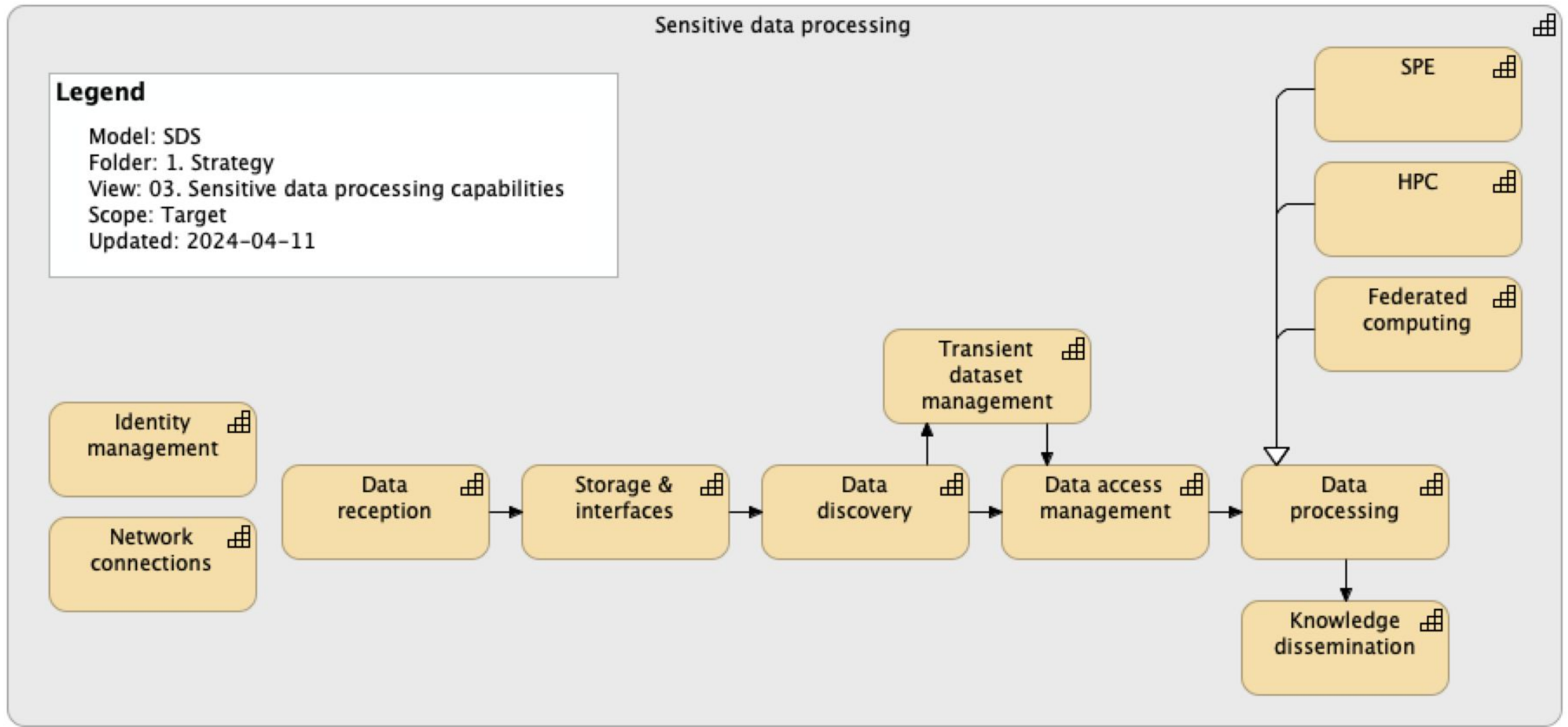
# Preliminary metadata model



# CSC Sensitive Data Services principles

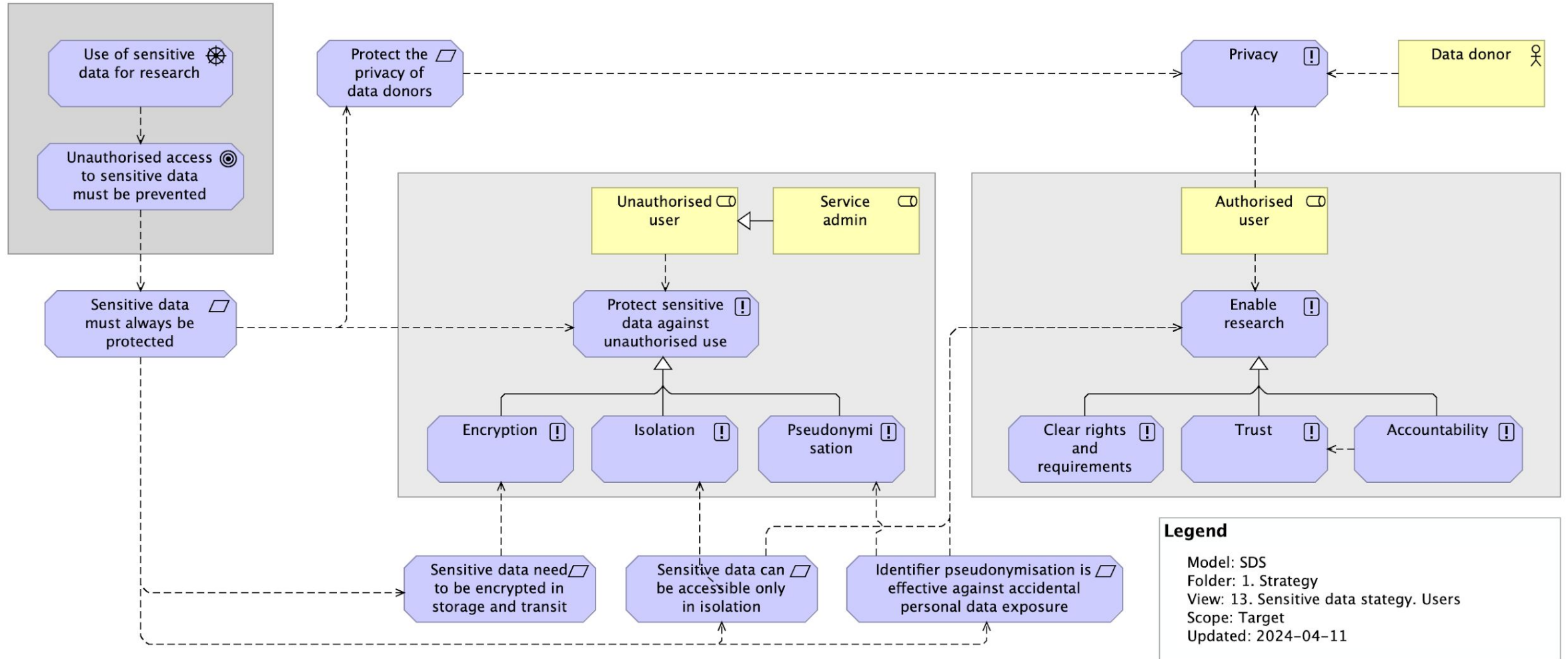


# Sensitive data processing capabilities

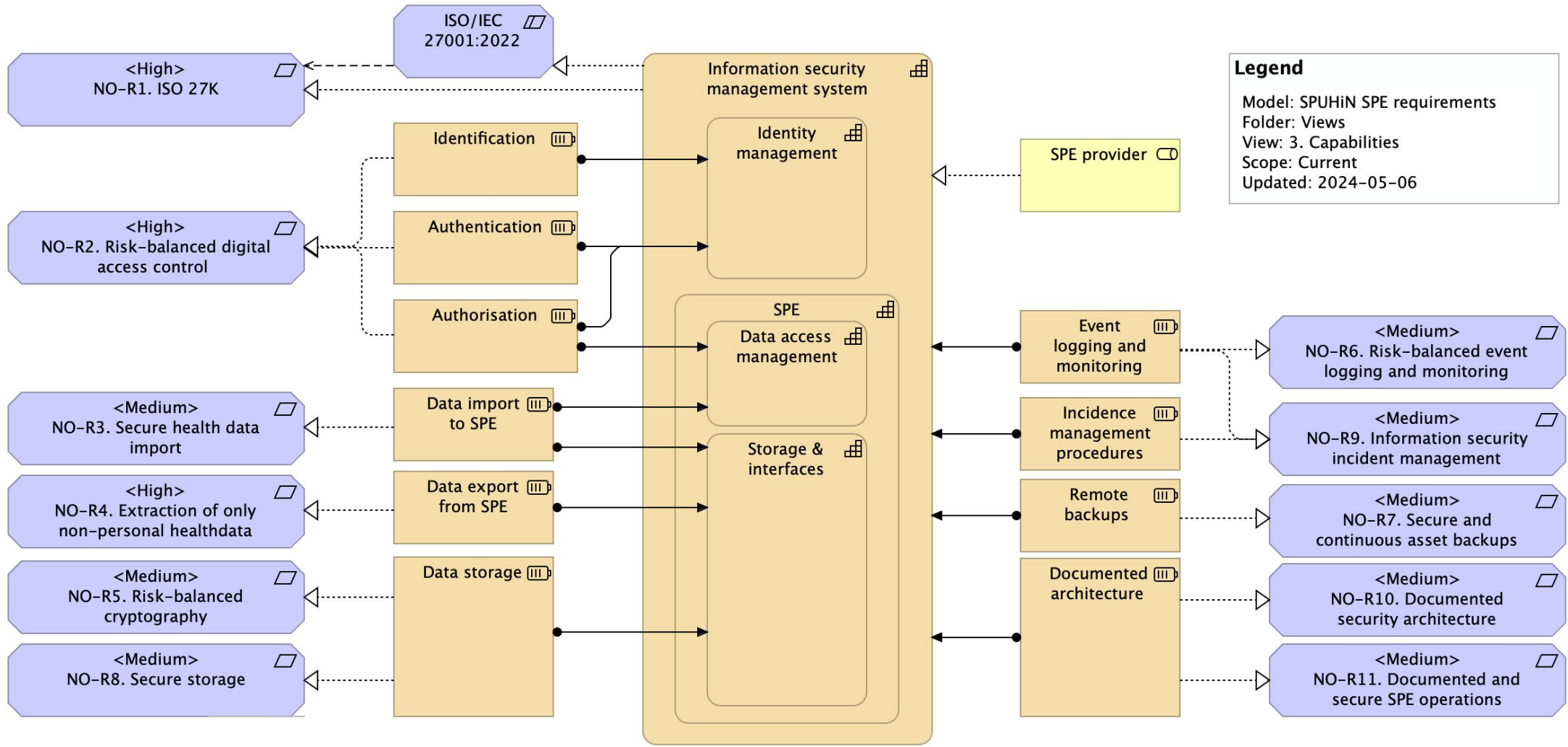




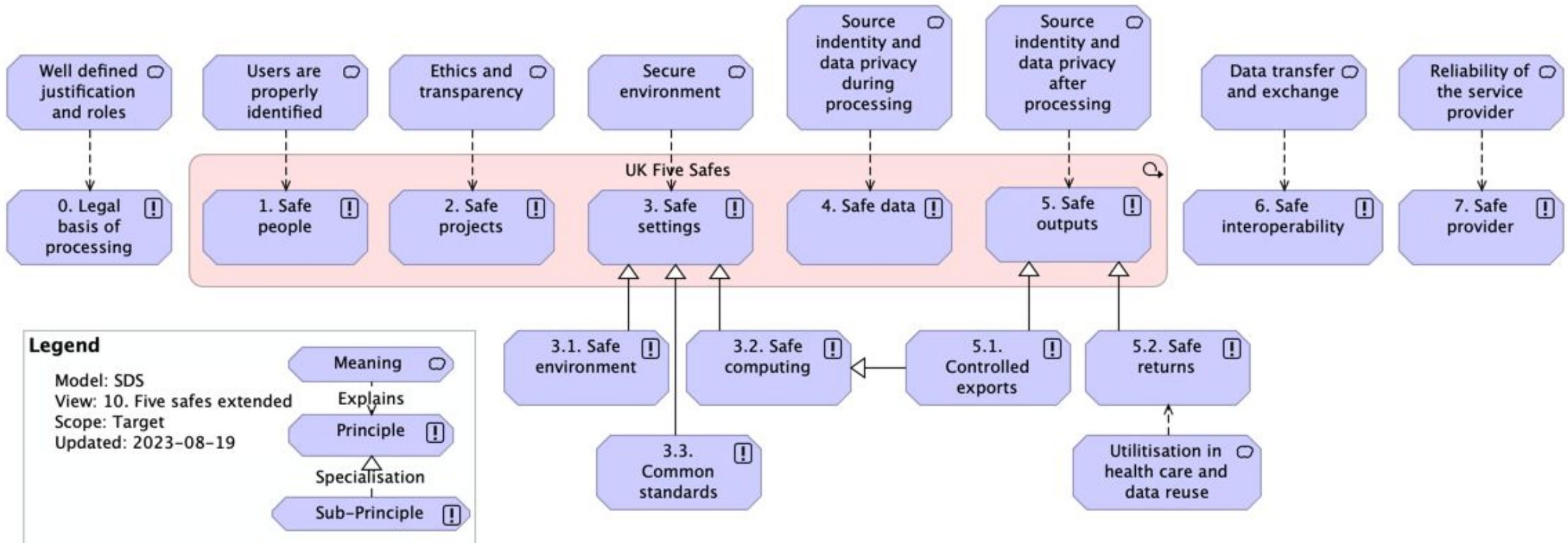
# Example of a simplified logic chain



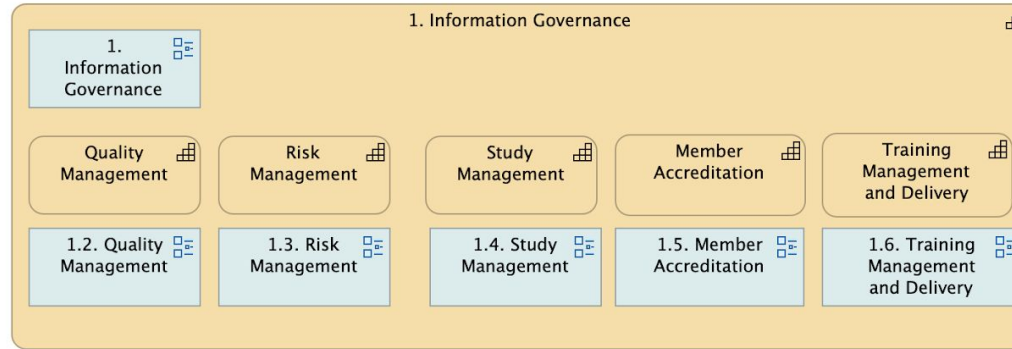
# Norwegian SPE requirements



# UK Five Safes extended

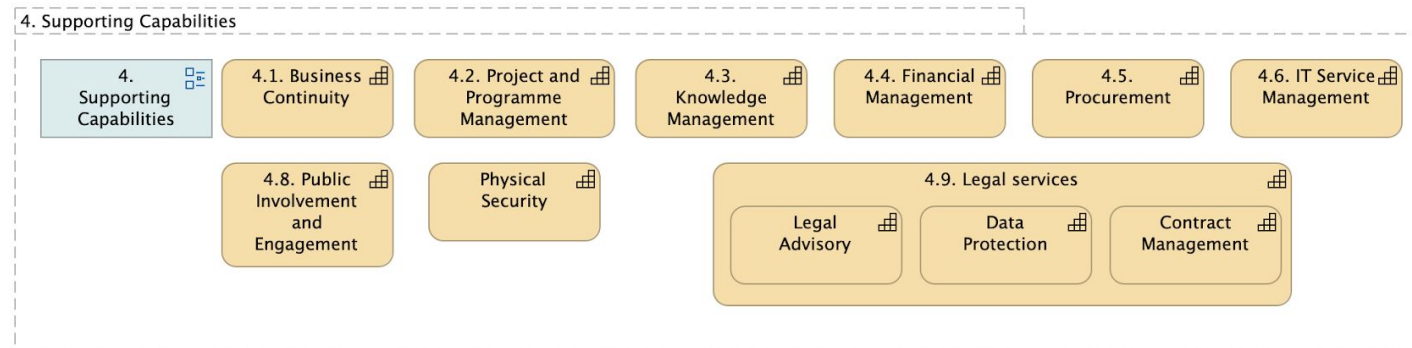
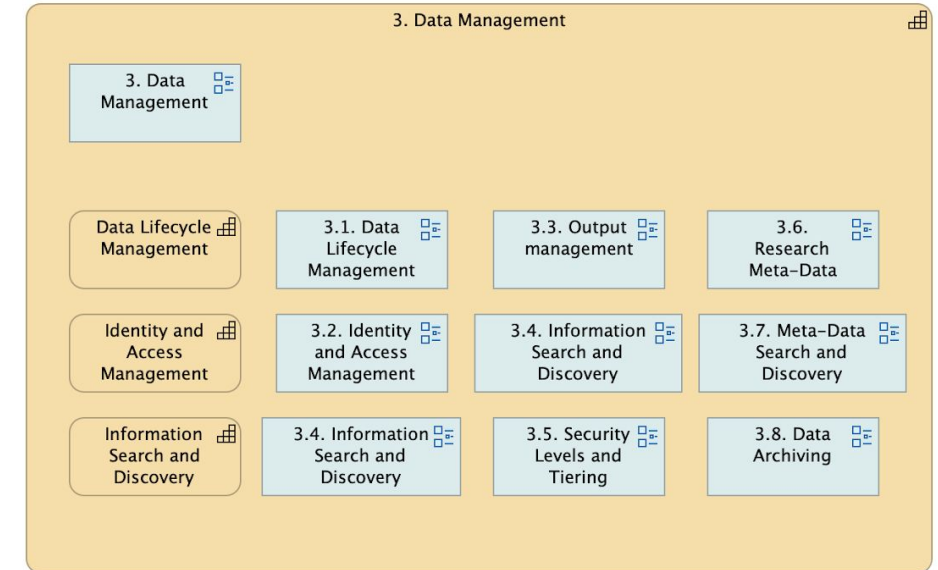
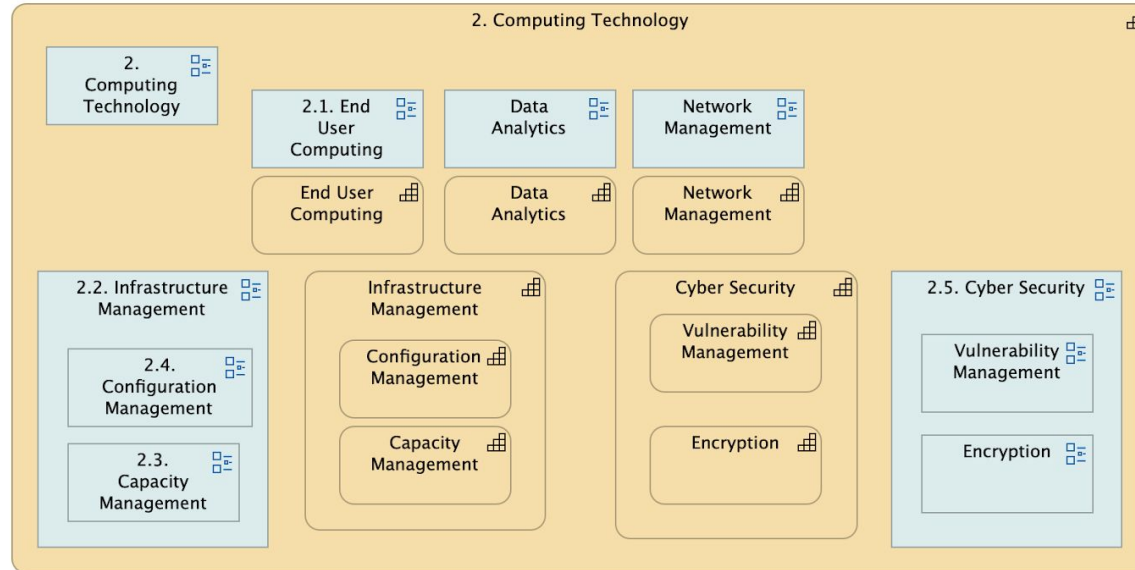


# SATRE architecture re-analysis



**Legend**

Model: SATRE  
Folder: Views  
View: 1. Capability View – Main  
Scope: Current  
Updated: 2024-04-09





---

# ENTRUST

European Network of Trusted  
Research Environments

 [www.eosc-entrust.eu](http://www.eosc-entrust.eu)

 [@eosc\\_entrust](https://twitter.com/eosc_entrust)

 [/company/eosc-entrust](https://www.linkedin.com/company/eosc-entrust)



Funded by  
the European Union

