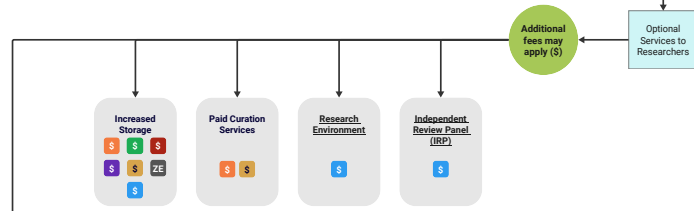
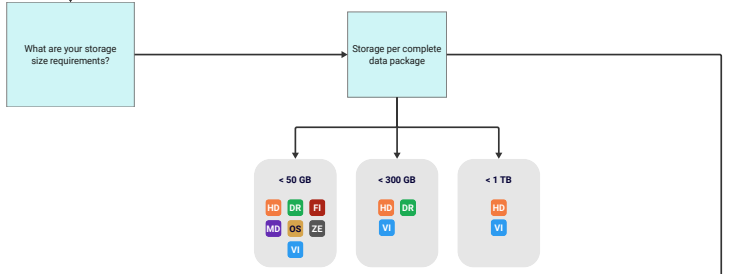
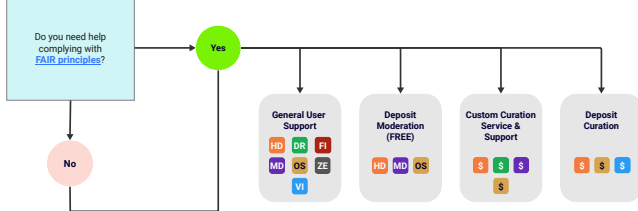
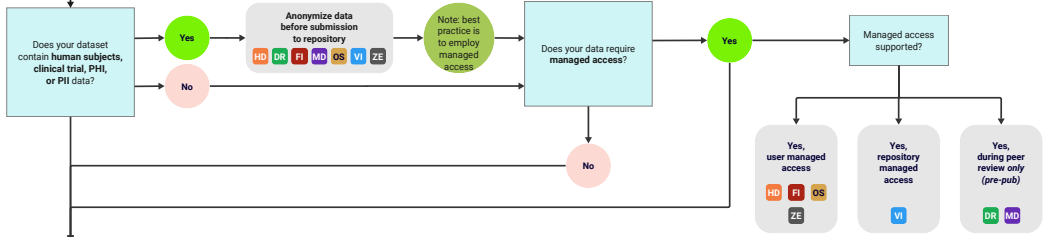
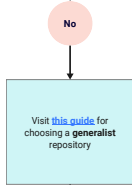


Each repository shares the following features:

- version support
- use metrics (**Make Data Count**)
- embargo option
- peer review access
- metadata schemas
- JSON for data export
- PIDs for data creators/authors, identifiers & affiliations, funders
- grant ID(s) & grant ID affiliation(s)
- linking to related software and research works/objects
- **FAIR compliant**

Repository	Identifier	Links to submission guidance and requirements, FAQs & user guides	Operated by
Dataverse		https://guides.dataverse.org/en/5.9/user/	The Dataverse Project
Dryad		https://datadryad.org/stash/requirements	Dryad
Figshare		https://help.figshare.com/section/user-guides	Figshare
Mendeley Data		https://data.mendeley.com/faq#mendeley-data	Elsevier
Open Science Framework (OSF)		https://help.osf.io/article/342-getting-started-on-the-osf	Center for Open Science (COS)
Vivli		https://vivli.org/resources/resources/	Vivli
Zenodo		https://help.zenodo.org/faq/	CERN



What **license options** are suitable for your data?

License	Dataverse	Open Science Framework (OSF)	Zenodo	Mendeley Data	Figshare	Dryad	Vivli
CC0 (no restrictions)	✓	✓	✓	✓	✓	✓	
CC BY 4.0	✓	✓	✓	✓	✓		
MIT	✓	✓	✓	✓	✓		
Apache 2.0	✓	✓	✓	✓	✓		
GPL v2	✓	✓	✓	✓	✓		
GPL v3	✓	✓	✓	✓	✓		
CC BY NC 3.0	✓	✓	✓	✓			
BSD 2-Clause	✓	✓	✓	✓			
BSD 3-Clause	✓	✓	✓	✓			
LGPL	✓	✓	✓	✓			
MPL 2.0	✓	✓	✓	✓			
CeCILL	✓	✓	✓	✓			
CeCILL-B	✓	✓	✓	✓			
CERN OHL	✓	✓	✓	✓			
TAPR OHL	✓	✓	✓	✓			
LGPL 2.1	✓	✓	✓	✓			
LGPL 3.0	✓	✓	✓	✓			
Other	✓	✓	✓			✓	✓

Choose a License

Want to license your work with Creative Commons, but not sure where to start, or which license is right for you? Use our license chooser!

