

---

# Hosting Events with Members of the Public:

A guide for involving members of the public at research events.



---

# Hosting Events with Members of the Public:

A guide for involving members of the public at research events.

**FEATURING A  
LIVE MERGE!**



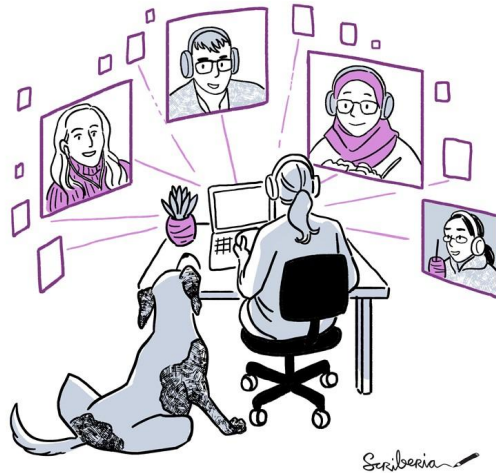
---

## Community discussions



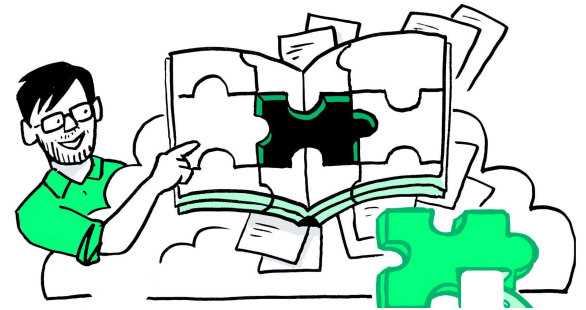
---

## Capturing recommendations



---

## Suggesting a chapter for *TTW*



---

# Community Discussions.



This chapter was developed with the support and input of the [AI for Multiple Long Term Conditions](#) **Public and Patient Involvement and Engagement Community of Practice.**

It summarizes the learnings and recommendations from 25 different projects and their public contributors on how to best **actively** involve patients and members of the public in research events.



---

# Public Involvement at Research Events.

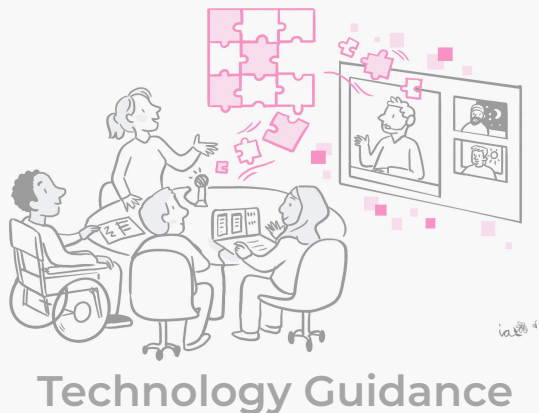
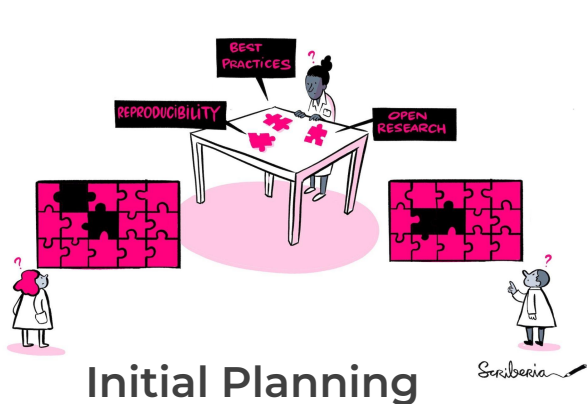


Rather than research participants where research happens ‘to’, ‘about’ or ‘for’ them.

Public involvement in research is research being carried out **‘with’** or **‘by’** members of the public.

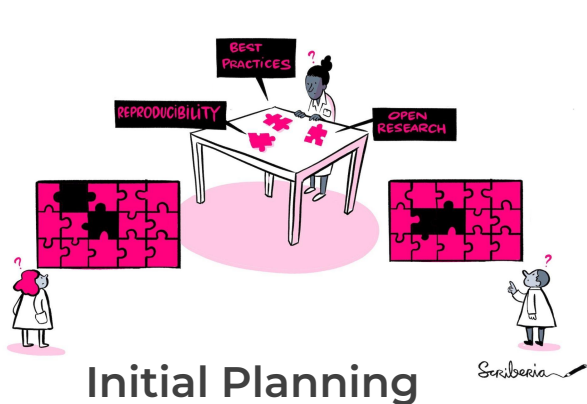
It is an **active partnership** between researchers and members of the public who develop an expertise in a particular area through a first hand “lived” experience.

# Hosting Events with Members of the Public.



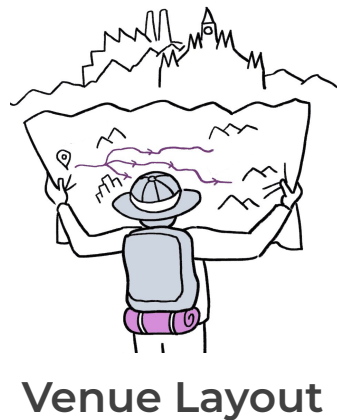
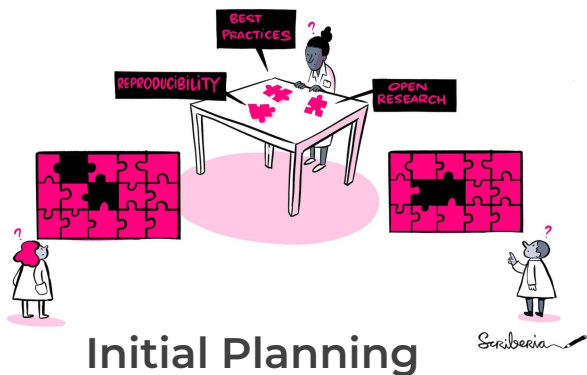


# Hosting Events with Members of the Public.

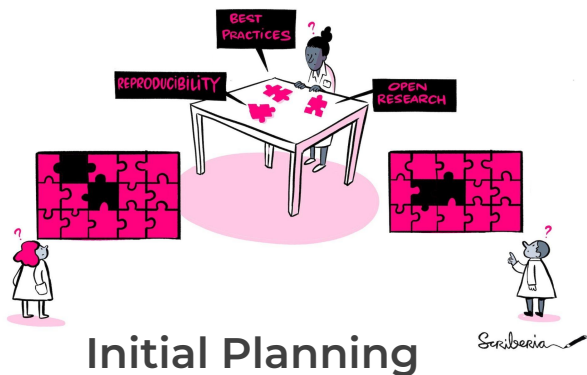




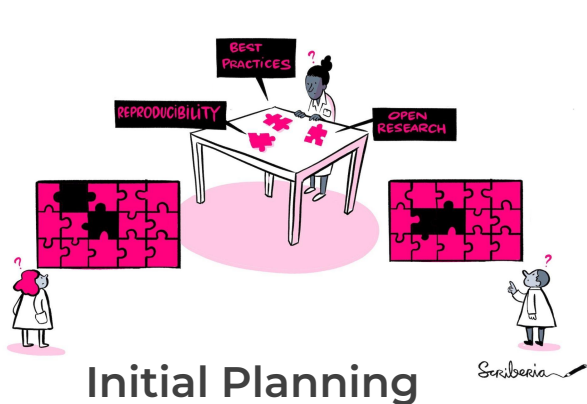
# Hosting Events with Members of the Public.



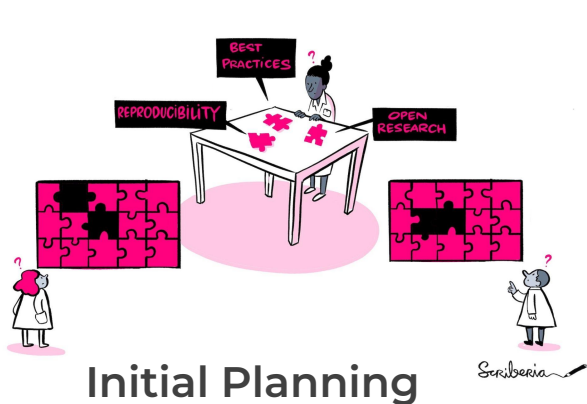
# Hosting Events with Members of the Public.



# Hosting Events with Members of the Public.

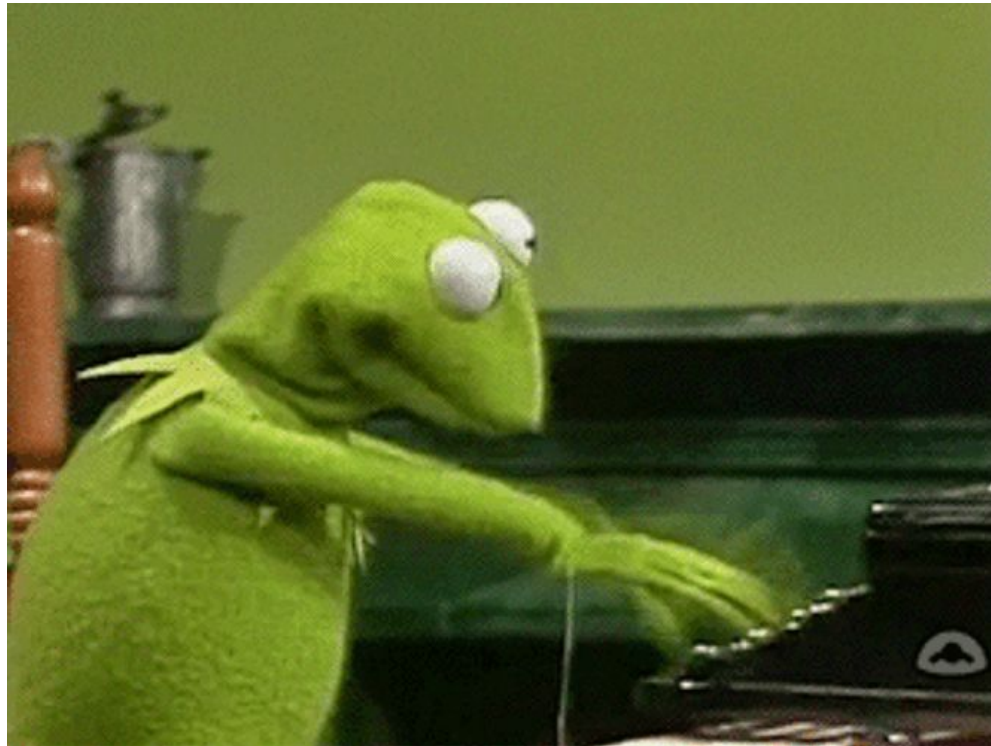


# Hosting Events with Members of the Public.



# Let's do this!

---





---

# Thank you.



**Dr Kirstie Whitaker**  
Programme Director for Tools,  
Practices and Systems



**Professor Ronan  
Lyons**  
Clinical Professor of Public  
Health, Medicine, Swansea  
University



**Dr Evelina Gabasova**  
Principal Research Data  
Scientist



**Gabriella Linning**  
Communications &  
Engagement Officer based at  
the Usher Institute, The  
University of Edinburgh



**Dr Batool Almarzouq**  
Research Project Manager, AI  
for Multiple Long-term  
Conditions



**Monica Fletcher**  
Honorary Research Fellow,  
Usher Institute, University of  
Edinburgh



**Bastian  
Greshake Tzovaras**  
Senior Researcher



**Lily Quinlan**  
Research Administrator at the  
University of Edinburgh



**Mahwish Mohammad**  
Data Wrangler



**Dr Rachael Stickland**  
Data Wrangler, Data for  
Research



**Chris Orton**  
Programme Manager at  
Swansea University Medical  
School



**Sophia Batchelor**  
Research Community  
Manager



**Dr Ann-Marie Mallon**  
Data Wrangling Lead,  
Research Data Team



**Sydney Ambrose**  
Programme Manager



**Dr Emma Karoune**  
Senior Researcher -  
Research Community  
Building I Tools, Practices and  
Systems

---

# Thank you.

