

THE GRANADA GEOPARK

Guadix

April 12, 2024

GEOPARQUE



GRANADA



unesco

Geoparque mundial

WELCOME TO GRANADA GEOPARK!!!

Here you are:





THE PROJECT

- ✓ This project begins in the territory more than 20 years ago. And it has been adding scientific, institutional, economical and social support, since then with a bottom-up methodology.
- ✓ In 2015 feasibility of submitting a candidacy to become Global UNESCO Geopark was analyzed.
- ✓ At the request of the territory, the Granada Provincial Council, from its Employment and Sustainable Development Delegation, has been supporting this exciting development project.

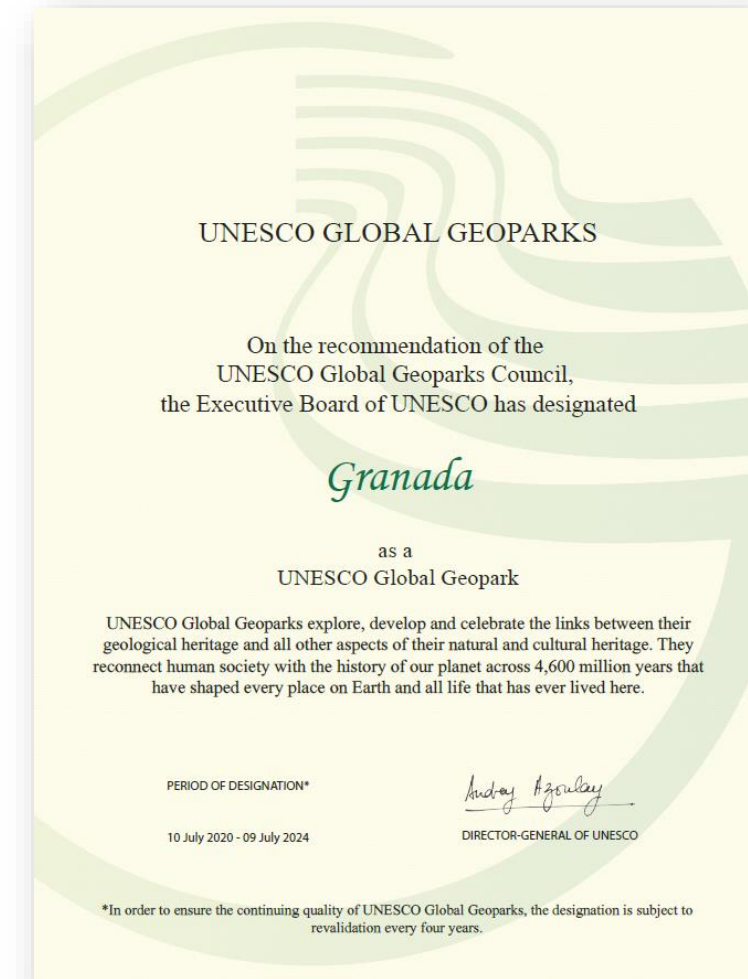
LINK OF THE GRANADA PROVINCIAL COUNCIL TO THE GEOPARK

The Granada provincial county Council has been **leading the candidacy process**, to place an environment of great heritage value, as a member of the Global Geoparks Network, **and now is the official representative entity of the Granada Geopark before UNESCO.**

However, as it is a **participatory project with a bottom-up strategy**. Local governments, social and economic agents and citizens have assumed, respectively, a part of the responsibility.

The result of all this effort was :

The recognition as a UNESCO World Geopark on July 10, 2020.



- A Geopark It is not a protected natural area.
- And does not involve any funding from UNESCO.
- It is a way of working in local development to improve the quality of life of its population.
- The inhabitants of the Geopark live on a unique territory in the world, internationally recognized.
- The Granada Geopark is a sustainable development tool, based on culture and millenary tangible and intangible heritage, which offers a real opportunity for the creation of tourism products that generate value for inhabitants of 47 municipalities.
- Beyond tourism, the involvement of citizens, the generation of illusion in the youngest people and the enhancement of traditions and singularities constitute an important factor that can mitigate the depopulation of these rural areas.
- An opportunity also opens in research, scientific development and, as well, of international presence that can enhance the feeling of belonging and identity of the population.
- The people of the Geopark not only live in their municipalities and towns, but also belong to a larger entity – unique in the world - and recognized by UNESCO – forming a powerful community ready for the future.

THE TERRITORY

- ✓ 47 municipalities
- ✓ More than 100.000 inhabitants
- ✓ 4 regions/districts
- ✓ More than 70 sites of geological interest
- ✓ 4.722 km²:
 - With a plain surface (**the glacis**), which occupies 60% of its area
 - And the most remarkable landscapes in the Geopark, **the badlands** that represent around 25% of the area



GRANADA GEOPARK



Also has a lot of interesting natural and cultural heritage that is necessary to preserve and put in value

PALEONTOLOGICAL HERITAGE



BIOLOGICAL HERITAGE



BIOLOGICAL HERITAGE



CULTURAL/INMATERIAL HERITAGE.

Local fest. Traditions, ancient skills



C.I Hábitat Troglodita Almagruz

ARCHAEOLOGICAL WEALTH



ARCHAEOLOGICAL WEALTH



HISTORICAL, ARTISTIC AND CULTURAL HERITAGE

Castels, churches,
roman theatre,
arabics baths...



IMPRESSIVE LANDSCAPE



GEOPARK DIVULGATION CENTERS NETWORK

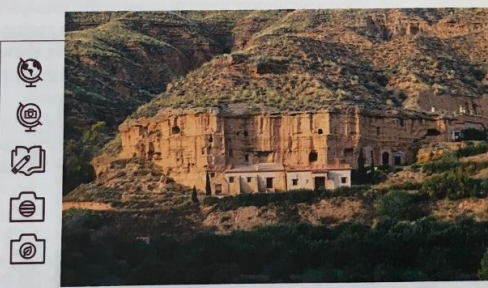
More than 30 centers (museums, interpretation centers, scientific facilities, tourism offices, etc..) related to different kind of heritage (paleontological, archaeological, historical, cultural, ethnographic....)

All of them classified by the educational, recreative, scientific, cultural, ecoturistic or geoconservation roll in the area.



Galera Archaeological Museum (Galera)
The Museum of Galera offers an archaeological tour stretching from the Copper Age to our most recent past. The well-known partially mummified remains of grave number 121 at the *Castellón Alto* Archaeological Site ("the Galera Mummy") are exhibited in the first room. They are oldest and best preserved prehistorical human remains after Ötzi, the 5,000 year old mummy discovered frozen in the Alps in 1991. It also boasts an ethnographic room where there is a tour of centuries-old winemaking techniques, esparto grass and hemp goods and traditional housing. There are also reproductions of pieces of ceramic pottery found in the archaeological sites of the area available for sale.

Archaeological Sites Visitor Centre- CIYA (Baza)
Forming part of the *Cerro Cepero* archaeological complex, it is the location of the Ibero-Roman city of Basti and the necropolises of *Cerro Santuario*, where the Lady of Baza statue was found in 1971, and *Cerro Largo*. The ASVC, in its more than seven hundred square meters of exhibition area, boasts the most up-to-date audiovisual technologies for museology services, offering the visitor a magnificent approach to understanding the social, cultural, economic and religious processes of the successive cultures that settled in Basti and its surrounding area.

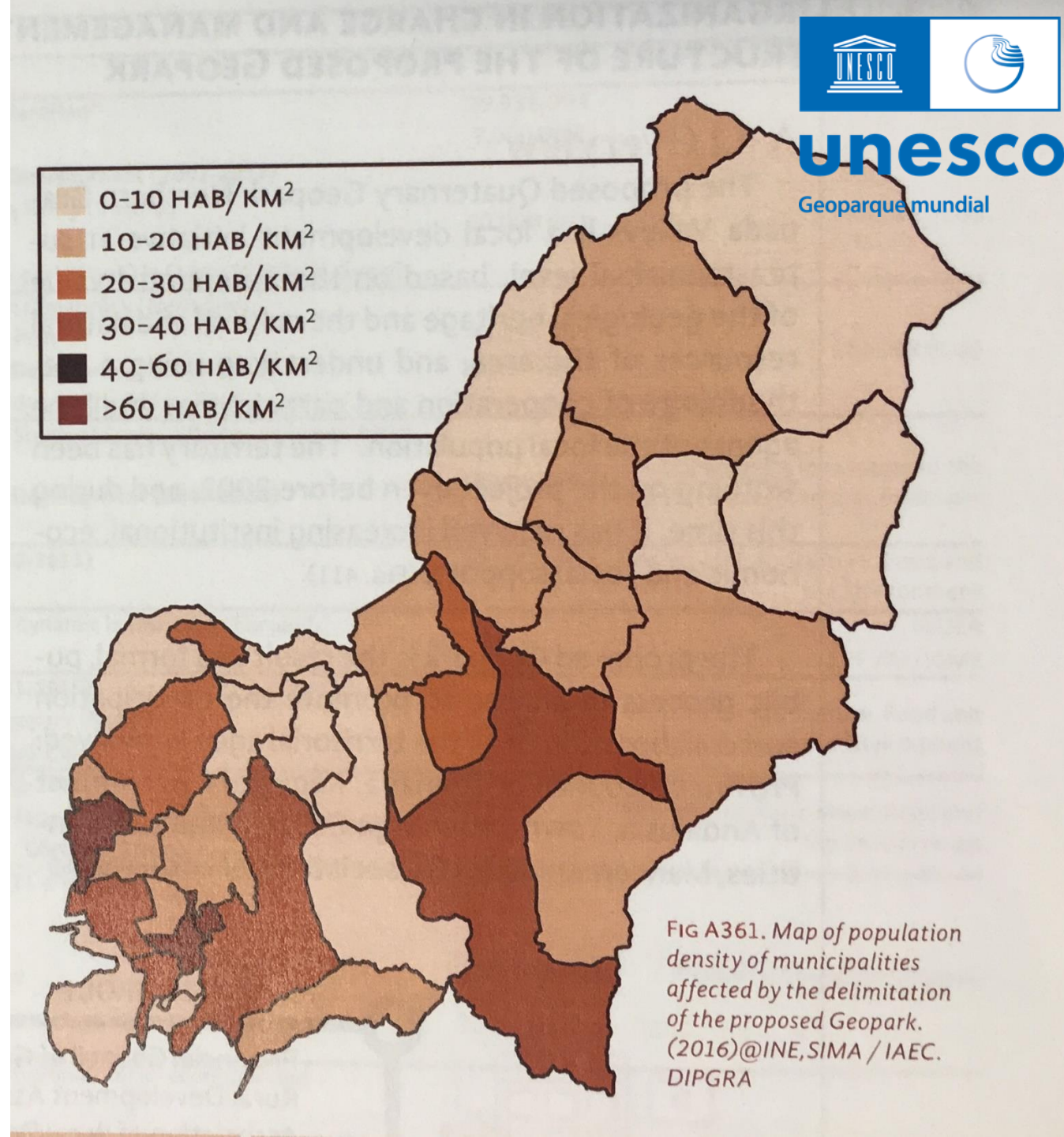


Almagruz Troglodytic Habitat (Guadix)
A complex of human habitats ranging from prehistoric settlements to contemporary cave-house dwellings. Additionally, it has a visitor centre where educational activities and projects are conducted for school children from the area.



SOCIOECONOMIC DATA

- Very low population density.
93% live in áreas with less than 50 inhabitants/Km².
- The main cities, Guadix y Baza, concentrate more than 40% of this population. The rest are very small villages.
- Aged population, above the provincial and regional average.
- Declining birth rate
- Tendency towards depopulation.





ECONOMIC ACTIVITY

- Mainly agriculture (cereal, legumes, vines, olives and almonds)
- Livestock farming focused on Segureño breed lamb)
- Very high quality of agrofood products (olive oil, wines, cured meats, lamb meat, honey) with origin designations
- Traditional handcraft (clay pottery, esparto grass work, wood craft,...)



Diversify economy with
quality local agrofood products
 Brand “Granada Flavour”,

 **Sabor
 Granada**

	PROPOSED GEOPIARK	GRANADA PROVINCE	ANDALUSIA REGION	SPAIN
POPULATION DENSITY (HAB/KM2)	32	72	96	92
DEMOGRAPHIC DEVELOPMENT (1999-2016)	-10,40	+12,6	+15,8	+15,8
POPULATION AGES 0-16 (%OF TOTAL)	14,9	17,5	18,3	16,1
POPULATION AGES 65 AND ABOVE (%OF TOTAL)	21,8	17,2	16,3	19,7

FIG A362. Demographic Data 2016 ©INE,SIMA / IAEC. DIPGRA



DENOMINACIÓN
 DE ORIGEN
 PROTEGIDA



VINO DE CALIDAD
 DE GRANADA



FIG A363. Products made in the territory guaranteed by protected designation of origin (PDO) and protected geographical indication (PGI).



WHAT IS SPECIAL ABOUT THE GRANADA GEOPARQUE?





UNIC TROGLODITIC LANDSCAPE



THE CAVE-HOUSES



Unic **trogloditic landscape**, with singular type of traditional cave-houses, closely linked with the geology of the area.

Sustainable habitat model integrated into the environment





**Unique and differentiating product of this
Geopark at an international level**

© Balcones de Piedad

The cave-house: from substandard housing to sustainable habitat and highly valued tourist resource

- **15,000 inhabited caves** in the Granada Geopark
- More than **25,000 people living in caves**
- **More than 2,000 accommodation places** distributed in small complexes
- **Other uses:** wineries, flamenco tablaos, restaurants, arab baths, interpretation centers, ridding centers, handcraft workshops,



- Natural **bioclimatic houses**
(constant T^a 18°C around all the year).
- Perfectly **Integrated into the landscape.**
- **Energy efficient.**





OTHER IMPORTANT FEATURES

Astroturism activities. Very dark and high quality sky to observe stars and planets

Geoturism

Ecoturism

Scientific turism

Adventure turism

Rural Turism

Nature turism

Environmental education



WHAT IS REALLY IMPORTANT IS THE PEOPLE

This project is a **great opportunity** for the sustainable development of the territory, **offering local people employment** opportunities in the area taking advantage of a not used resource so far. The opportunity **to be proud of their natural and cultural heritage**, and of their own identity.

For visitors, open a world to discover, with numerous attractions of all kinds (unrepeatable landscapes, remains of our history, evolution of the land, products, traditions, local hospitality And much more!!!



GRANADA GEOPARK BACKGROUND

The initiative unites the efforts of many institutions and entities that work with a common objective: **the socioeconomic development of these rural areas.**



UNIVERSIDAD DE GRANADA



Mancomunidad de Municipios de la Comarca de Guadix



PROYECTO
GEOPARQUE
del Cuaternario

VALLES del NORTE de
GRANADA

MANAGEMENT STRUCTURE AND GOVERNANCE

An **agreement** was signed on 2017 to create the **Granada Geopark** by the main entities representing the territory..

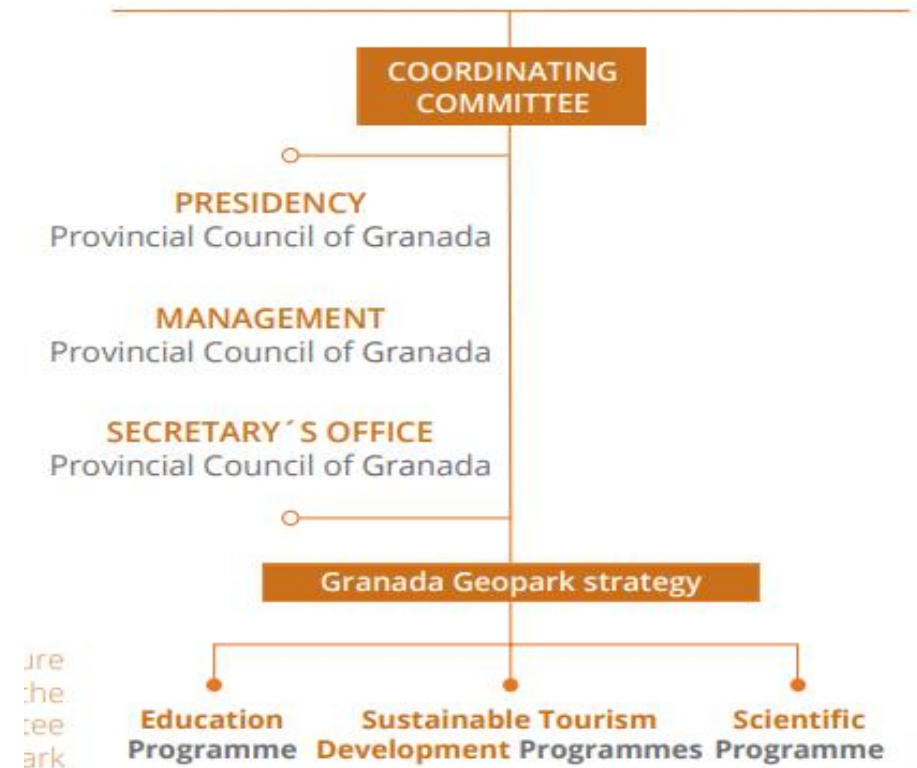
Coordination Committee made up of the representatives of each of the entities (institutional, socioeconomic and scientific) that are signatories to the Geopark's foundation protocol. It has responsibility for decision-making, coordination and monitoring of the activities planned in the Granada Geopark

Working Groups, for the organisation and coordination of the territorial agents.

There are also a **forum of mayors**.

This **governance model**, integrating several stakeholders in the territory, provides for good cooperation between the partners.

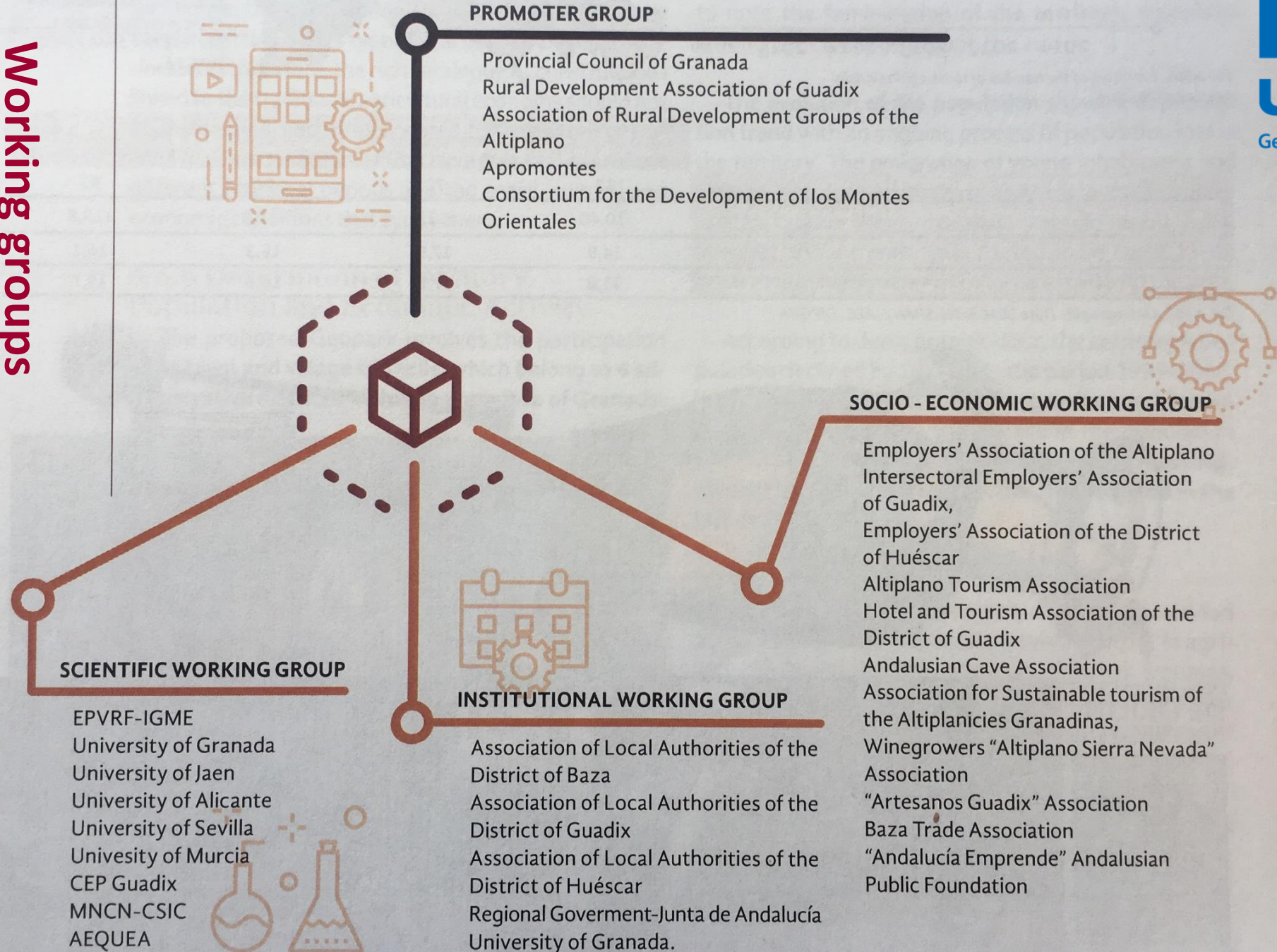
Diputación de Granada | Junta de Andalucía | GDR Guadix | GDR Altiplano | Apromontes | Consorcio de los Montes | Instituto Geológico y Minero de España (IGME) | Universidad de Granada | Universidad de Jaén | Mancomunidad de Baza | Mancomunidad de Guadix | Mancomunidad de Huéscar | Mancomunidad del Marquesado | Asoc. Empresarios Altiplano Granada | Asoc. Turismo Altiplano | Asoc. Hostelería y Turismo de Guadix | Asoc. Empresarios Comarca de Huéscar | Asoc. Intersectorial de Guadix | Asoc. Andaluza Cuevas Turísticas | Asoc. Para el Turismo Sostenible de las Altiplanicies Granadinas



are
the
tee-
ark

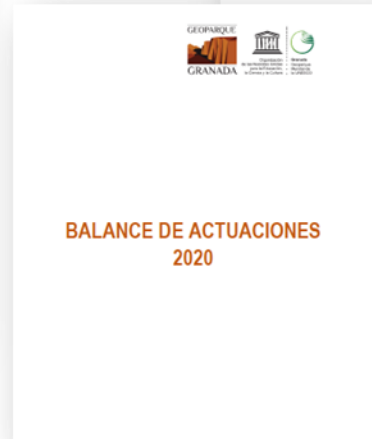


Working groups



GRANADA GEOPARK STRATEGIC PLAN

Geopark Strategic Plan



Annual action plans and reports



Participation process

The degree of participation in the Granada Geopark is high. The methodology implemented is a strategy of cooperation and participation between all public institutions, economic agents, scientific entities and citizens, who have actively participated in the design and development of the Strategic Plan













© José Ángel Rodríguez



unesco

Geoparque mundial

THANKS!!!

GEOPARQUE



GRANADA

www.geoparquedegranada.com

