

## A SYSTEM FOR ONLINE ASSIGNMENT AND COMPLETION OF PROJECT TOPICS FOR UNIVERSITY GRADUATES.

Sharifboyeva Ro'za

*Intern teacher of Urgench branch of Tashkent University of Information Technologies named after Muhammad al-Khwarazmi [sharifboyeva9887@gmail.com](mailto:sharifboyeva9887@gmail.com)*

Abstract— Today, the last stage of the bachelor's degree, which is recognized around the world, every student should choose an individual project and carry out a project based on this project. One of the main goals of the GRADUATE WORK is to teach the student to plan and manage projects. The subjects of the GRADUATE MAKAVIL WORK are given by the teachers. In the past, monitoring of research projects was done manually, making it difficult to maintain transparency. This showed that it is necessary to create a monitoring system of the GRADUATE THESIS project management. This article presents the initial development of a GRADUATE THESIS project monitoring system for students. The created system can be used by academic supervisors, graduate students and students.

Keywords—model, request, status, monitoring, architecture, GRADUATE THESIS.

### I. INTRODUCTION

The Faculty of Software Engineering of the Tashkent University of Information Technologies named after Muhammad al-Khorazmi, according to the Decree of the President of the Republic of Uzbekistan on March 26, 2013 "On measures to further improve the personnel training system in the field of information and communication technologies" PQ-1942- was established on the basis of the "Information Technologies" faculty based on the decision of No. The Faculty of Software Engineering strives to train a new generation and specialists in the field of digital technologies. The mission of the faculty is to provide students with the knowledge and skills necessary to become leaders in the field of software engineering. In the field of software engineering, it provides bachelor's and master's personnel in the field of software engineering in the form of full-time, part-time and mass education.

Awarding and evaluation of diplomas for these specialties includes different stages. There is a procedure, requirements and regulations for choosing diploma topics and assigning them to students for work. GRADUATE QUALIFIED THESIS is evidence of the author's ability to systematize, strengthen and expand the theoretical and practical knowledge he acquired from general professional and specialized subjects during his studies, to apply this knowledge in solving the problems considered in the GRADUATE QUALIFIED THESIS, and the level of preparation of the student for independent work in the specialty should give.

## II. REQUIREMENTS FOR GRADUATE WORK

The academic director of the GRADUATE THESIS supervises all stages of the preparation and writing of the GRADUATE THESIS until the defense. The student writing the GRADUATE THESIS submits reports on the work done to the supervisor based on the established schedule. The scientific leader offers the necessary literature and information on the topic; gives systematic advice based on the schedule; advises the student on the content of the work and its formalization; provides information at the department meetings about whether the student is working or not working based on the established schedule; gives consent to present the case to the defense.

Manual execution of all the above-mentioned tasks until today has caused some difficulties for the students and for the leaders and management. For example, we can cite information about the percentage of completion of GRADUATE WORK, transparent selection of topics for GRADUATE WORK, problems of students in working with supervisor, etc.

## III. THE PROCEDURE FOR APPROVAL OF THE GRADUATE QUALIFICATION WORK

The specialist-producing department develops methodical instructions, in which, taking into account the nature of the department, mandatory requirements of the GRADUATE QUALIFICATION WORK are indicated. These methodological instructions are delivered to the students before they begin to perform the GRADUATE

QUALIFICATION WORK. Usually, students do GRADUATE WORK at the university, provided they have the necessary conditions. In some cases, GRADUATE WORK can be completed in other educational and scientific research institutions.

The rector of the university issues an order on the approval of the topic of students' GRADUATE QUALIFICATION WORK, appointment of academic supervisors and advisers, based on the proposal of the dean of the faculty. Scientific guidance and counseling of Graduate Qualification Work

Responsibilities of the academic supervisor of GRADUATE QUALIFICATION WORK:

- to help the student in choosing the subject of GRADUATE QUALIFICATION WORK and making a plan for its implementation;
- help in choosing research methods;
- giving advice on sorting literature and materials;
- systematic control of the completion of GRADUATE QUALIFICATION WORK based on the developed plan and providing information about it at department meetings;
- Evaluation of the quality of completion of GRADUATE QUALIFICATION WORK according to the requirements set for it (scientific supervisor's review);
- conduct preliminary defense in order to check the student's readiness for defense.

The supervisor of the GRADUATE QUALIFICATION WORK is responsible for the quality and independent completion of the qualification work performed by the student, does not allow repetition or copying of the topic.

GRADUATE WORK is supervised by university professors, associate professors, full-time or part-time doctors of science or candidates of science. One supervisor can supervise a maximum of seven students. Employees of scientific research institutes with scientific titles, highly qualified professors-teachers of the corresponding department in other higher education institutions can also supervise the GRADUATE QUALIFICATION WORK.

The academic director of the GRADUATE THESIS supervises all stages of the preparation and writing of the GRADUATE THESIS until the defense. The student writing the GRADUATE THESIS submits reports on the work done to the supervisor based on the established schedule. The scientific leader offers the necessary literature and information on the topic; gives systematic advice based on the schedule; advises the student on the content of the work and its formalization; provides information at the department meetings about whether the student is working or not working based on the established schedule; gives consent to present the case to the defense.

Manual execution of all the above-mentioned tasks until today has caused some difficulties for the students and for the leaders and management. For example, we can cite information about the percentage of completion of GRADUATE WORK, transparent selection of topics for GRADUATE WORK, problems of students in working with supervisor, etc.[2]

#### IV. ELECTRONICIZATION OF THE SELECTION OF THE TOPICS OF THE GRADUATE WORK

In order to eliminate these problems and make it easier to work with students, we offer a project for choosing topics in GRADUATE QUALIFICATION WORK. The project works on the basis of several roles, and based on the topics introduced by the leaders, students will have the opportunity to choose topics remotely (even outside the university). In addition, the program has a chat section that provides communication between students and the leader.

In today's age of rapidly developing technologies, it is the need of the hour to automate almost all the work of the Department of Software Engineering as a test and to apply it to other departments.(1)

The Research Methodology course is divided into several levels. At the beginning of the semester, students are required to get project names selected based on the latest news in the IT field, and this can be easily done with the help of the program. Each research

project is supervised by the scientific supervisors of the department. Oversees industry-related projects together with industry representative. Projects can take the form of case studies, mathematical modeling, simulations, data analysis, and hardware or software development. Each student is required to write a report based on the chosen topic and submit it at the specified time.

This system is divided into several important components, that is, the dean's office, students' and supervisor's department.

This diagram gives an overview of the development of the system. It shows the relationship between the topics, the importance of the concepts, the topics and tasks related to each.[1]

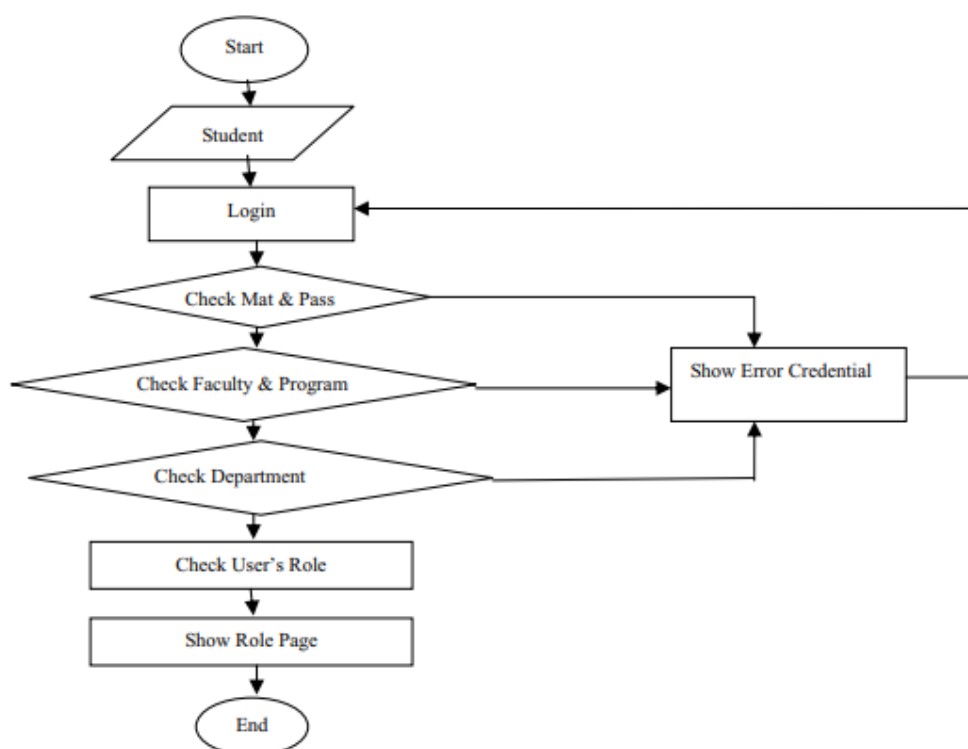


Fig. 1. The process of enrolling students into the platform.

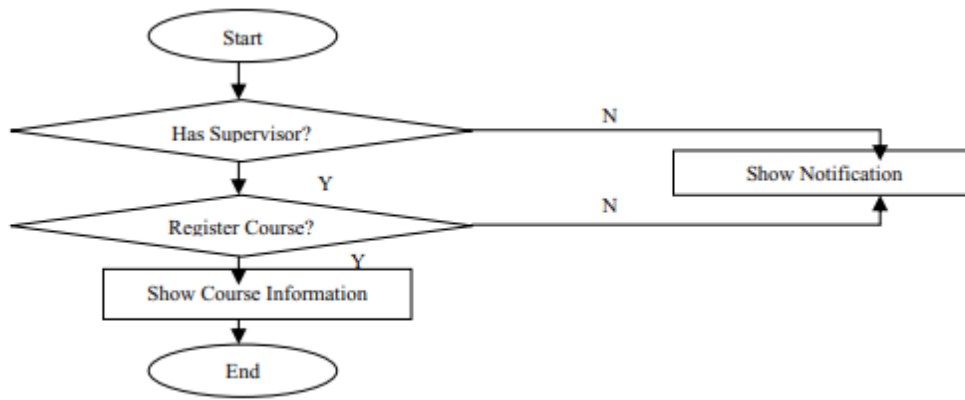


Fig. 2. Student role of the program.

Figure 4 shows the scheme of the student supervision process. The system directly shows whether the student has received the GRADUATE THESIS subject or not. If no (N), the student must choose a subject first.. If yes (Y). If not (N), the student can select a supervisor and the system will then notify them. After you submit a supervisor request, the status of the request is displayed. If the student has a supervisor, the supervisor's information is displayed.

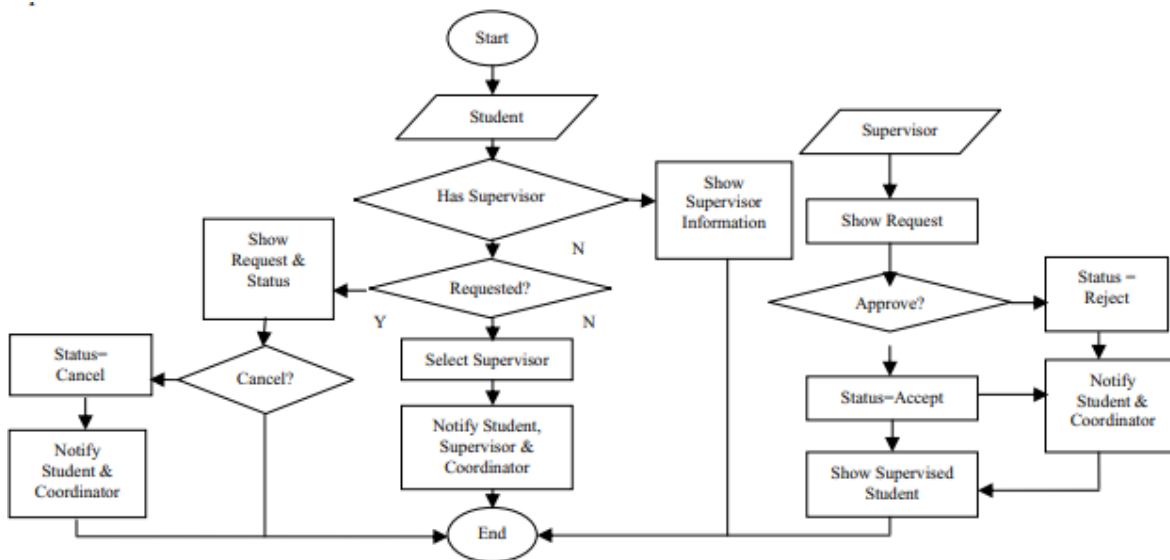


Fig. 4. Student supervision process.

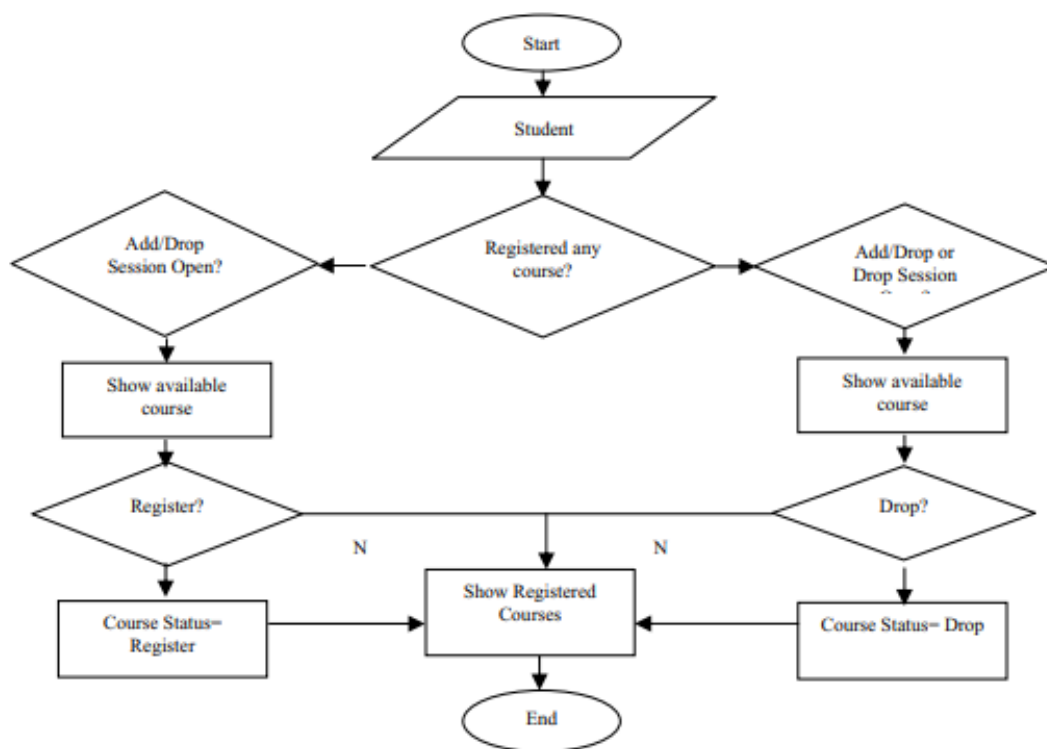


Fig. 5. Student Topic Selection Process

Figure 5 shows the flow chart of the student topic selection process. After registration, the add/drop topics session will open. The system will show you the topics you can choose from. Students can choose a topic. Selected topics are not visible to students. The program shows the degree to which GRADUATE WORK is being completed. In addition, the platform also has a dialogue with the leader. Through this, the student can find a solution with the leader about the problematic situations that arise.[3]

This process is completed by entering the student's grade as shown in Figure 6. The leader evaluates. If Yes (Y), the supervisor enters the student's grade.

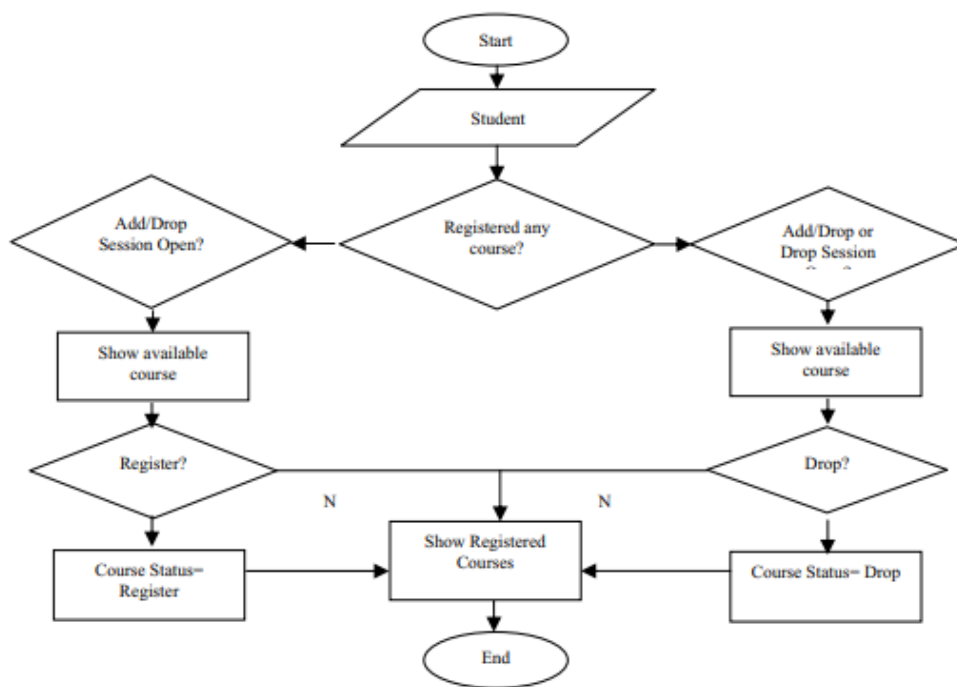


Fig. 6. Evaluation process.

Currently, the online monitoring system is in the early stages of development. All modules are developed and will be tested individually. The overall system will be ready to learn and improve in the next training session[2]

## CONCLUSION

Research methodology and GRADUATE THESIS require effective management and monitoring, as the topics include different batches and stages. In addition, project planning should be considered. An online system has been developed to replace the current method of assigning GRADUATE THESIS topics to students. The effectiveness of this system is tested and improved for students. We hope that this system will facilitate the management of processes related to GRADUATE QUALIFICATION WORK and create convenience in monitoring.

## REFERENCES



- [1] Badariah Bais, Mardina Abdullah, Azah Mohamed “Initial Development of Project Monitoring System for Masters Coursework Universiti Kebangsaan Malaysia Teaching and Learning Congress 2011, Volume II, December 17 – 20 2011, Pulau Pinang MALAYSIA
- [2] Quvondiqovich I. S. et al. COMPARISON OF RECOMMENDATION SYSTEMS IN EDUCATIONAL MANAGEMENT //INTERNATIONAL SCIENTIFIC CONFERENCES WITH HIGHER EDUCATIONAL INSTITUTIONS. – 2023. – T. 1. – №. 05.05. – C. 730-734.
- [3] Bais B., Abdullah M., Mohamed A. DEVELOPMENT OF ONLINE PROJECT REGISTRATION AND MANAGEMENT SYSTEM (ePRM) FOR MASTERS BY COURSEWORK //JOURNAL OF ENGINEERING SCIENCE AND TECHNOLOGY. – 2015. – T. 10. – C. 18-27.
- [4] Andersen A. Preparing engineering students to work in a global environment to cooperate, to communicate and to compete //European journal of engineering education. – 2004. – T. 29. – №. 4. – C. 549-558.
- [5] Badariah Bais, Mardina Abdullah, Azah Mohamed “Initial Development of Project Monitoring System for Masters Coursework Universiti Kebangsaan Malaysia Teaching and Learning Congress 2011, Volume II, December 17 – 20 2011, Pulau Pinang MALAYSIA