

# Advancing Research Assessment with a Focus on Open Science

Clifford Tatum (CWTS)  
Francesca Di Donato (CNR)

CoARA-EOSC 10 April 2024

graspOS

# GraspOS at a glance

Develop, pilot and put into operation an **open and trusted federated infrastructure** to support and enable assessment reform towards “Open-Science-aware” Responsible Research Assessment (OS-aware RRA).

Offering **data, tools, services, and guidance** to support assessment reform

Based on an **Open Science Assessment Framework (OSAF)** that assists translation OS & RRA principles into practice

## At three levels

- individual/group researchers
- research performing and research funding organisation
- country

**Budget: 2.985M**

**Start date: 1/1/2023**

**Duration: 36 months**

# A multi-disciplinary consortium

Infrastructure experts



RRA + OS experts



Diverse Communities



# Key Results

- The **Open Science Assessment Framework (OSAF)**, a living & collaborative resource for RRA that facilitates assessment OS taken into consideration a diverse range of contributions and roles.
- A set of **Assessment Portfolios** to support the collaborative collection of inputs for research assessment & an online **Assessment Registry** to facilitate publishing assessment protocols developed.
- A set of **metadata enrichment tools & services** for enriching missing attributes, semantics, context, and novel indicator values on research outputs & enriching the links among them with appropriate semantics.
- A set of **monitoring tools and services** offering OS indicators, contextual factors, qualitative information (e.g., narratives), and relevant evidence to support assessment processes & relevant types of analysis.
- A **Federated Open Research Assessment Infrastructure** that offers APIs to provide easy access to relevant services and data assets coming from well-established providers of scholarly metadata information, paving the way for the creation of a research assessment data space.
- A **Community of Practice** of responsible research assessment experts from relevant networks, to facilitate knowledge sharing and capacity building.
- A set of **Training material** relevant to the subjects of research assessment and OS.

# Demonstrating & evaluating the key results

- **Nine pilots** encompass a diverse array of use cases spanning various levels, scopes, and values.
- These pilots serve as co-development partners to **showcase and practically test** the assessment framework, infrastructure, tools, and services developed within the project.
- The pilots' vastly different formulations and contexts **provide stakeholder feedback through real-world implementation** of assessment reform.

graspos |||

# Open Science Assessment Framework

The Open Science Assessment Framework (OSAF) is focused on translating OS and RRA principles into practice. This encompasses the full assessment process.

The framework design includes

- 1. the SCOPE+i method**
- 2. digital assessment portfolios**
- 3. an assessment registry**

Together, these elements form the OSAF framework and support the full assessment process.



# on context

Our approach to research assessment begins with the premise that context, purpose and values inform the assessment approach, and that each context is different.

# OSAF: Translating Principles to Practice

## Open Science Assessment Framework (OSAF)

### SCOPE+i Method

- assessment-specific infrastructure
- assessment resources
  - RRA in general
  - OS in particular

### Assessment Portfolio

- facilitates collaboration
- narrative + Evidence
- diversity of inputs & roles
- researcher/group/institution

### Assessment Registry

- contextualized assessment
- transparency & reuse
- community resource
- searchable database



# Qualitative inputs

qualities	input
Values	Value statement (template)
Context	Contextual factors (template)
Purpose	Purpose statement (template)
Readiness	Infrastructure & culture change
Meaning	Narrative(s)
Peer review	Expert judgement

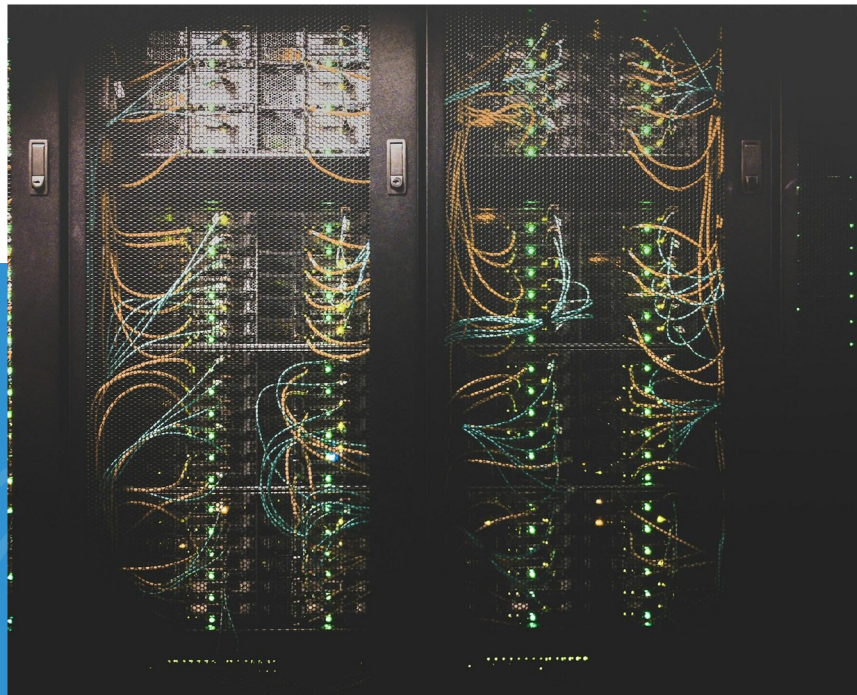


Photo by [Taylor Vick](#) on [Unsplash](#)

# The Infrastructure

Open Science has many flavours & parameters

Metadata is missing or incomplete

Fragmented metrics data for openness & usage.

Reliance on proprietary data.

Novel indicators are not just about numbers.

# What – in a nutshell

- Deliver **fit-for-purpose tools and services** with the necessary characteristics to accelerate adoption of and support for OS-aware RRA approaches:
  - **broad coverage** by including multiple types of research results beyond literature and enriching the existing data assets with additional information and semantics
  - **novelty** by introducing indicators related to the practice of OS
  - **inclusivity** by including diverse types of evidence beyond research results and indicators (e.g., qualitative input such as narrative CV, texts)
  - **Interoperability by design** of data sources
  - a mix of **automated** and **manually curated and annotated** metrics
- **Develop and operationalize** an infrastructure for research assessment (data-tools-services-guidance)

# High-level Architecture

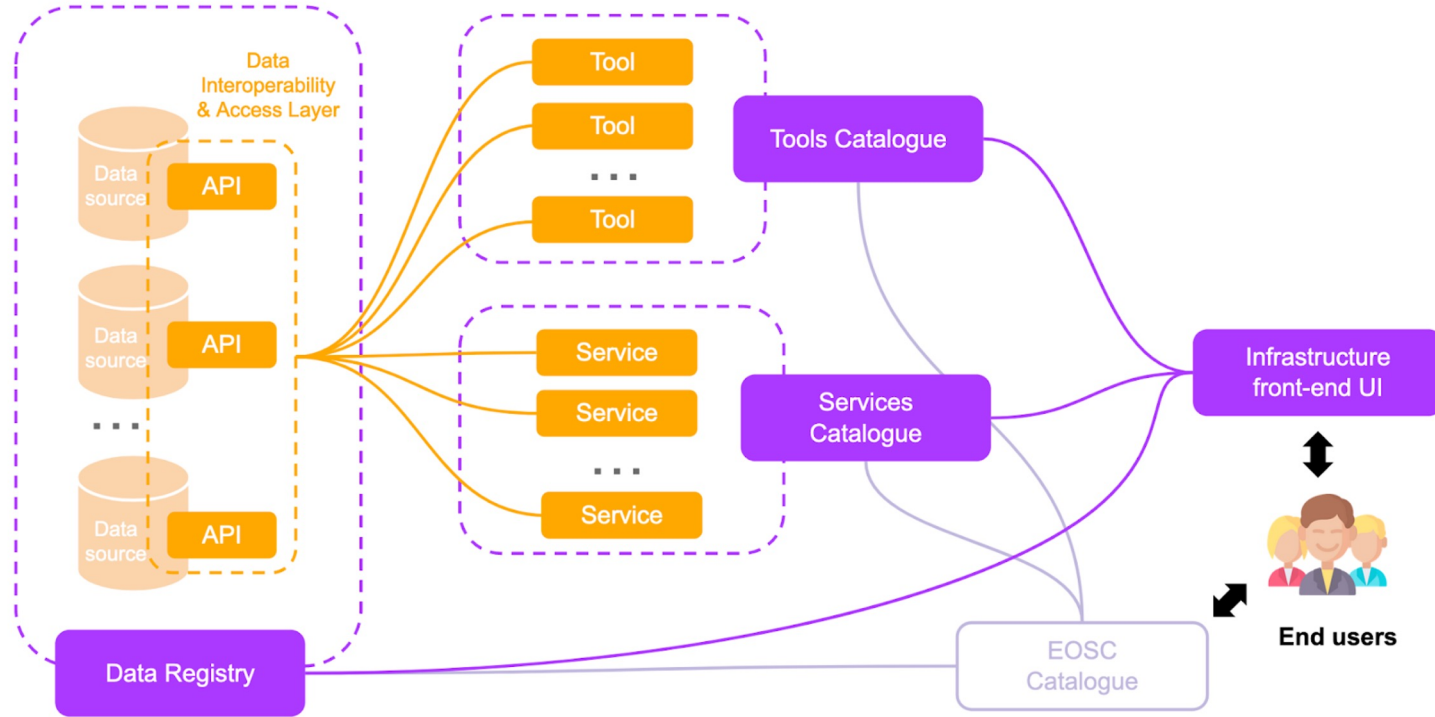




Photo by [Hannah Busing](#) on [Unsplash](#)

# The Community

## Different types of pilots

- Funders & national stakeholders
- Universities (Research performing organisations)
- Thematic disciplines

## Community of Practice of OS and RRA experts

## Capacity via training

# Community of practice on assessments that value OS

Focus on **binding the technical infrastructure** development and its operational aspects with the **RRA/OS community** and envisioned practices

**Complement COARA** by engaging different actors and stakeholders brought in by the partner networks as follows:

- Research performing & funding organisations
- Providers of data/metrics infrastructure
- Local and national monitoring infrastructures
- Research Infrastructures
- National Open Science initiatives and bodies
- Scholarly societies and other professional bodies
- Researchers who focus on R&I assessment tapping on the Super MoRRI network



graspos |||

Let's make it happen! Together.

# THANK YOU

---

[c.c.tatum@cwts.leidenuniv.nl](mailto:c.c.tatum@cwts.leidenuniv.nl)

---

[francesca.didonato@cnr.it](mailto:francesca.didonato@cnr.it)

---

[vergoulis@athenarc.gr](mailto:vergoulis@athenarc.gr)

---

 **graspos**  
open research assessment dataspace