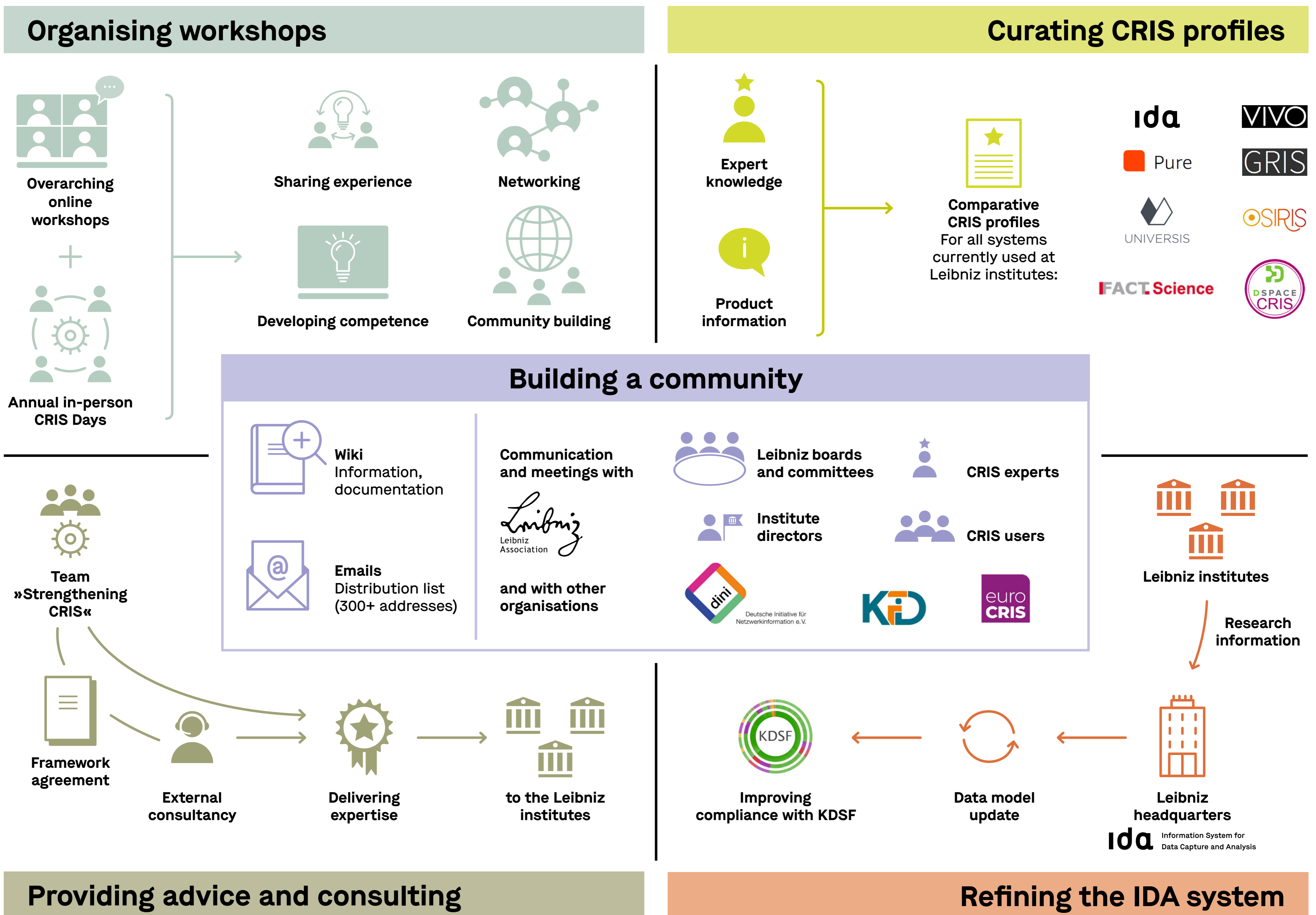


Strengthening Current Research Information Systems (CRIS) in the Institutes of the Leibniz Association

What was our starting point?

The proportion of Leibniz institutes using Current Research Information Systems (CRIS) has so far **not exceeded 25%**. Standardisation, the comprehensive use of PIDs, automatic data transfer and validation are hardly possible under these circumstances. **The use of CRIS is essential for professional, future-proof management of open research information.**

What is our approach?



What is our ongoing mission?

