



PLASTIC PACKAGING IN PEOPLE'S LIVES

# Moral Subordination of Plastic Waste to Food Waste

# Acknowledgements

The cartoon is based on research funded by the UK Research and Innovation (UKRI) Industrial Strategy Challenge Fund in Smart Sustainable Plastic Packaging (NE/V010611/1). You can find out more about the cartoon, its methodology, and the Plastic Packaging in People's Lives Team [here](#). This research has been co-developed with our extensive industry, policy, and household partners. We would like to thank our partners (Bells of Lazonby, Biotech Services, Booths, Butlers Farmhouse Cheeses, Chartered Institute of Wastes Management (CIWM), Institute of Materials, Minerals and Mining (IOM3), Lancaster City Council, Preston Plastics, Relic Plastic, Suez, and Waitrose) for their support throughout. We are grateful to Matteo Saltalippi for research assistance in the early stages of this work.

## To cite this cartoon

Cronin, J., Skandalis, A., Hadley, C., Piacentini, M.G., Stowell, A.F., Hardy, J.G., Hendry, L., Mumford, C., and Verma, S. (2024) "Plastic Packaging in People's Lives Cartoon Depiction: Moral Subordination of plastic waste to food waste". Available at <https://www.lancaster.ac.uk/ppipl/ppipl-resources/> | 10.5281/zenodo.10853201

## Authors

James Cronin, Alex Skandalis, Charlotte Hadley, Maria Piacentini, Alison Stowell, John Hardy, Linda Hendry, Clare Mumford, and Savita Verma.

## Contacts

Professor James Cronin ([j.cronin@lancaster.ac.uk](mailto:j.cronin@lancaster.ac.uk))

Professor Alex Skandalis ([a.skandalis@lancaster.ac.uk](mailto:a.skandalis@lancaster.ac.uk))

## Our partners





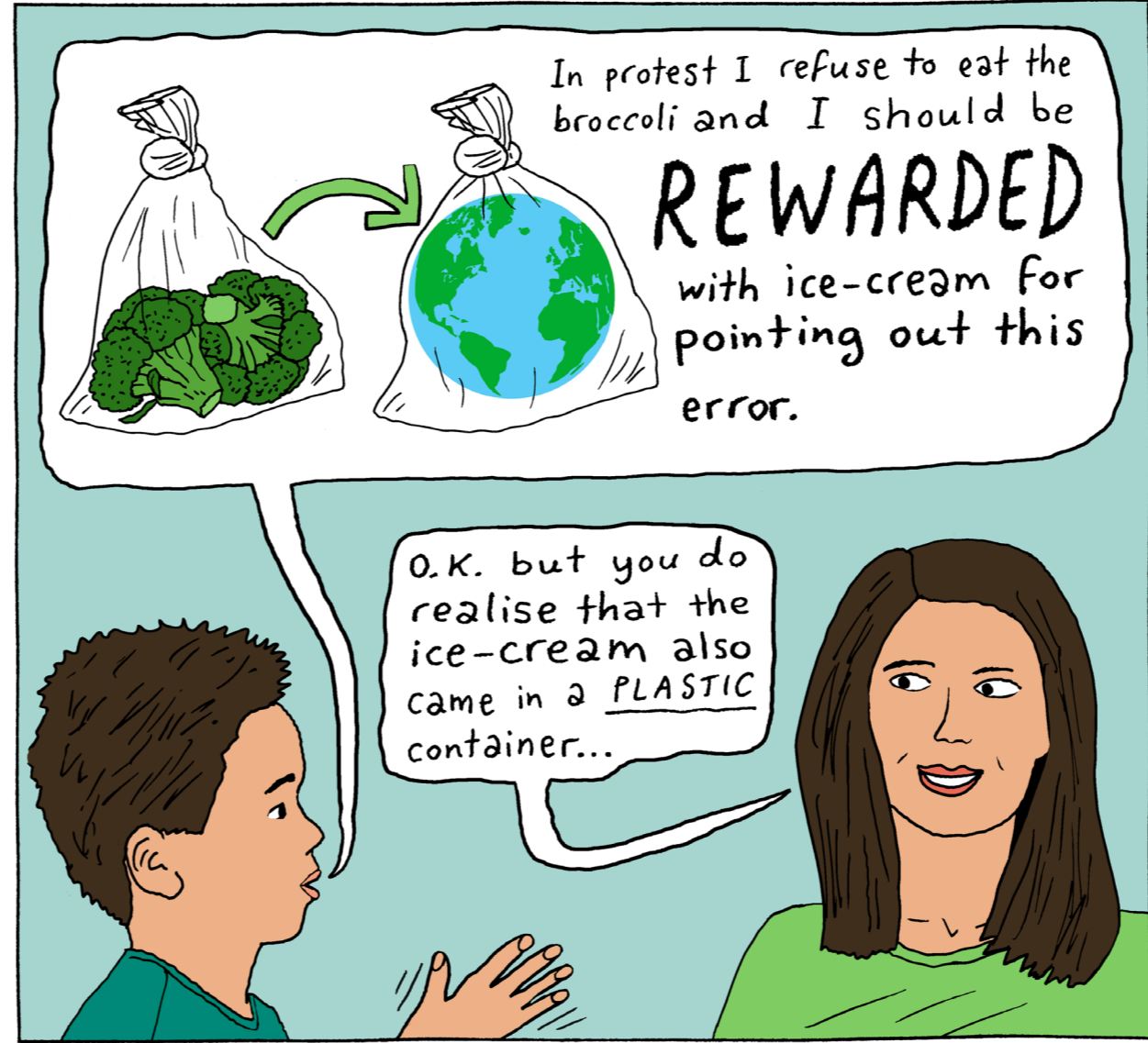
\*INSERT NAME OF FAMINE-STRICKEN COUNTRY HERE

Eat your broccoli!  
It's wrong to waste food when there are starving people in \_\_\_\_\_\*.  
If you don't eat it, you can't have ice-cream.

Yuck!



Well, I noticed that you brought the broccoli home in a SINGLE-USE PLASTIC BAG. There was no need—you washed the broccoli and boiled it so it would have been fine to eat. So you just added another POINTLESS bag to the billions littered around the planet!!



In protest I refuse to eat the broccoli and I should be **REWARDED** with ice-cream for pointing out this error.

O.K. but you do realise that the ice-cream also came in a PLASTIC container...



PLASTIC (WHEN CARDBOARD WOULD HAVE WORKED JUST FINE)

Ugh!

**PPiPL**

PLASTIC PACKAGING IN PEOPLE'S LIVES

Find out more at  
[lancaster.ac.uk/ppipl/](http://lancaster.ac.uk/ppipl/)

DRAWN BY PETER ARKLE

**PPiPL**

PLASTIC PACKAGING IN PEOPLE'S LIVES