



Latvijas Finieris

Promises delivered. Naturally.

**Latvijas
Finieris**

Latvijas Finieris

The Baltic Rim is where our success starts

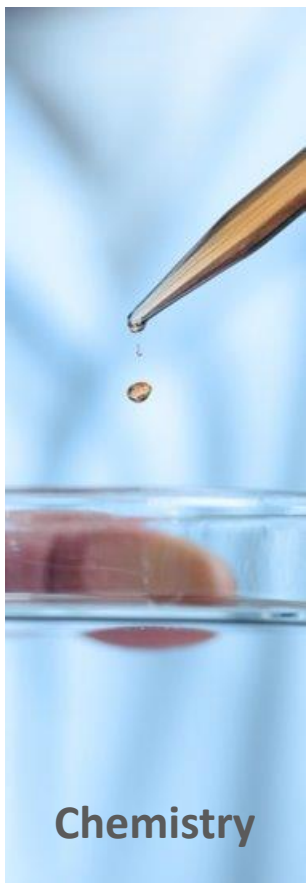
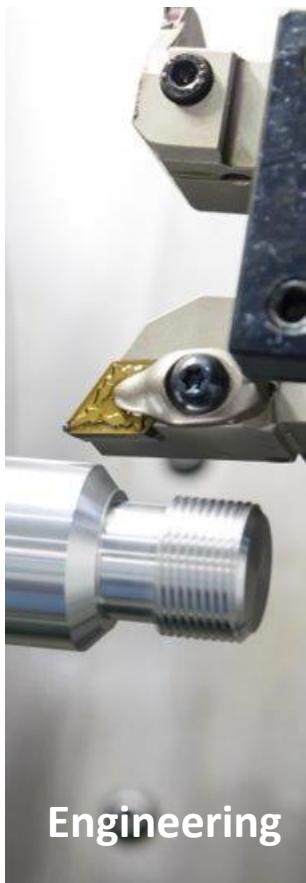
2450 employees in **14** countries

Turnover ~ **€ 345 million** per annum

~**10%** market share in the EU

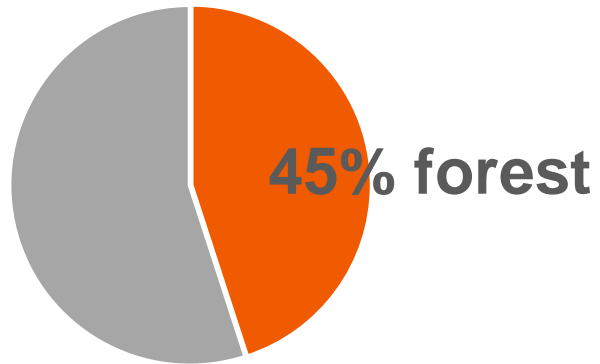


Areas of expertise

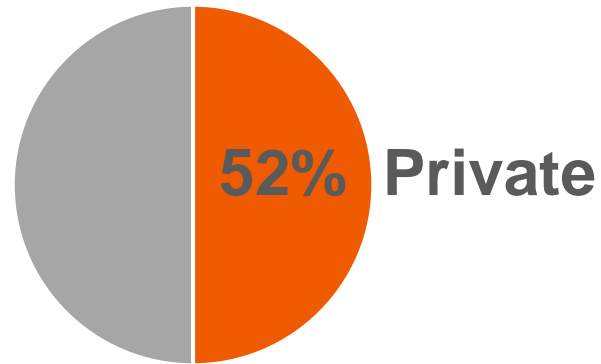


FORESTS PLAY A CRUCIAL ROLE IN THE BALTIC ECONOMIES

Coverage



Ownership



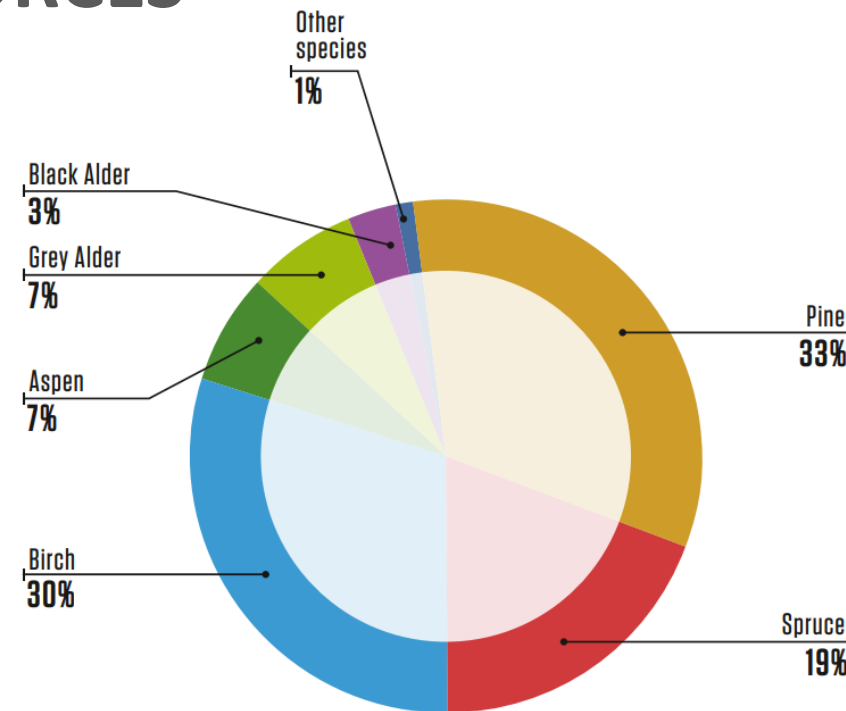
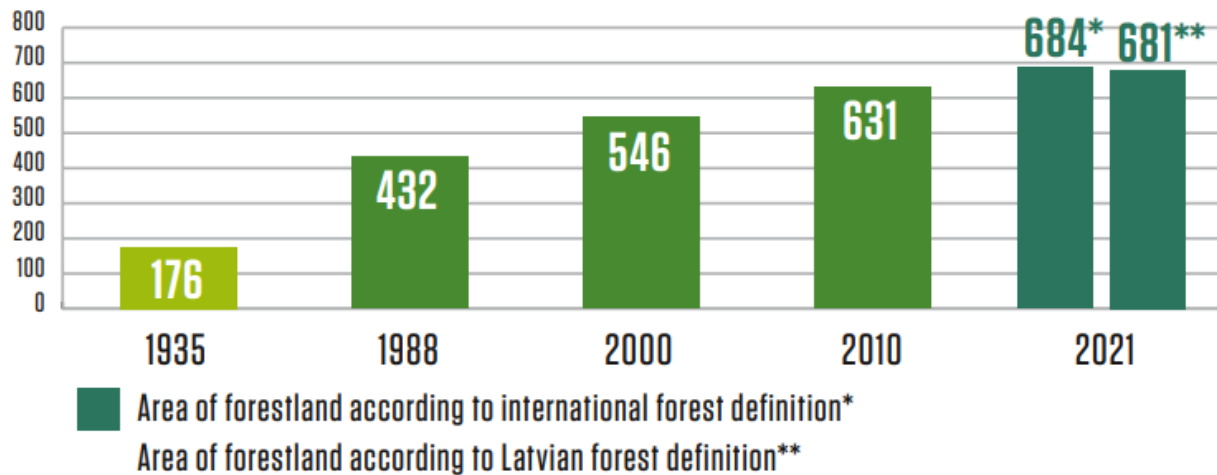
SUSTAINABLE FORESTRY:

- ✓ Long-term forest management
- ✓ Certified supply chains
- ✓ Growing forest areas



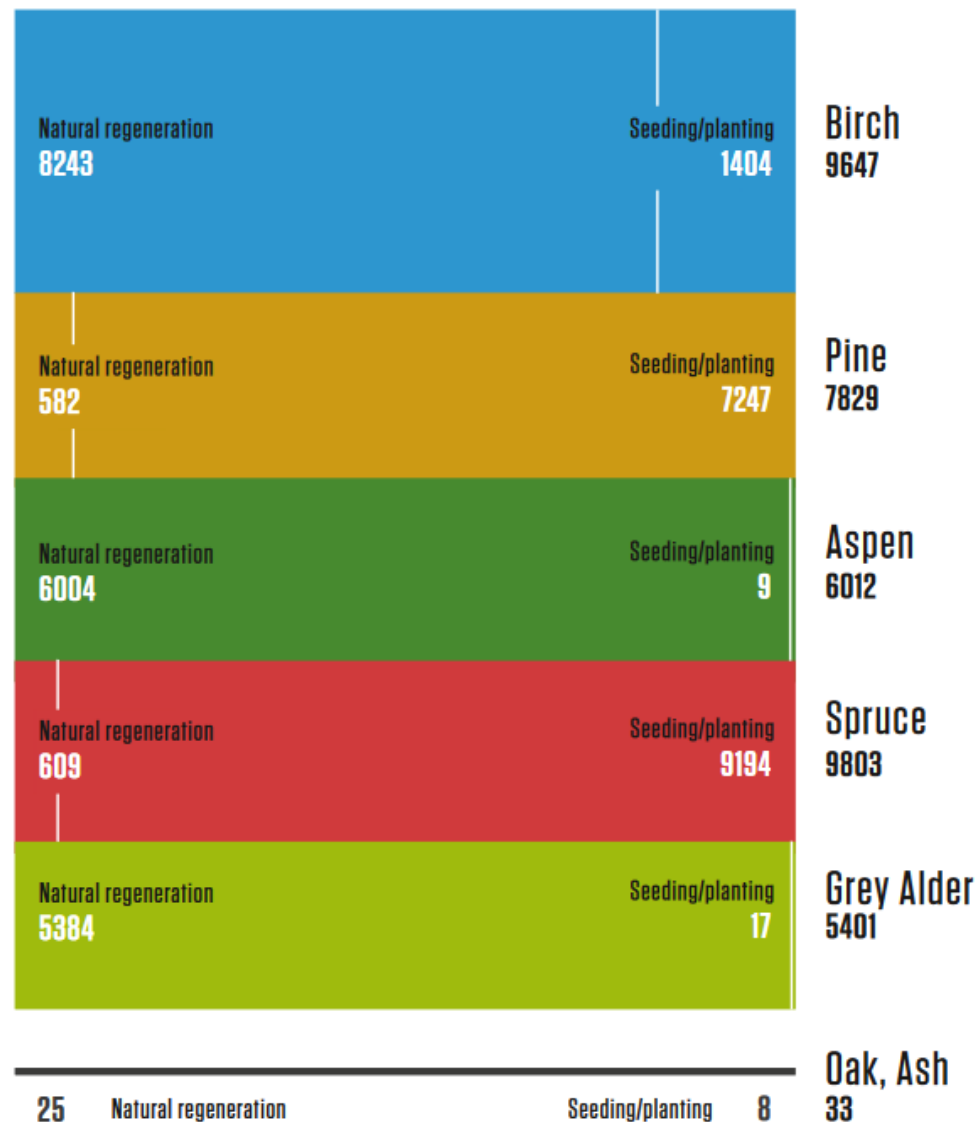
SUSTAINABLE USE OF LATVIAN FORESTS AND AVAILABILITY OF BIRCH RESOURCES

Total growing stock volume (Million m³)



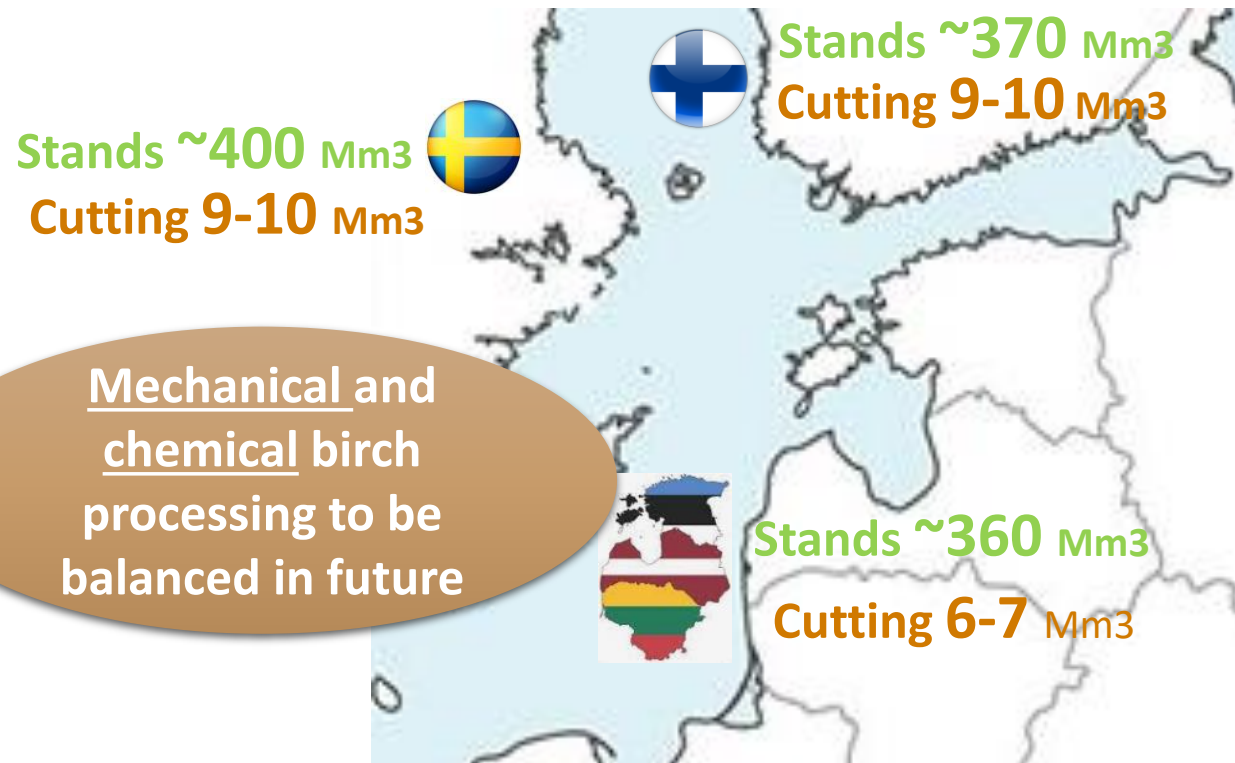
Forest regeneration by species and by the type of regeneration (ha), 2021

- Very good natural regeneration of the birch, aspen and gray alder
- species Spruce and pine must mainly be planted via seedlings



BIRCH RESOURCE POTENTIAL IN THE BALTIC SEA REGION

- 5 countries: FI + SE + EE + LV + LT
- Total birch stands in 5 countries over **1 billion m³**
- Annual cutting exceeds **20 million m³**



LATVIJAS FINIERIS – LONG-TERM PARTNER FOR LANDOWNERS



- Actively engaged in forest management (~10 thousand ha forest property and a modern tree nursery capable of growing ~1,5 million saplings p.a.)
- Exploring & evaluating new technologies together with scientists, thus ensuring **long-term & cutting edge benefits** to forest/land owners
- Our 25+ years experience in birch wood selection tells us for sure that **quality saplings & professional forestry methods are worth it!**
- For land owners this means considerably **higher property value**, whereas for industry this raises work efficiency & product quality for future materials made from renewable resources
- Applying knowledge-based forestry methods in commercial forest areas increases maneuver options to **balance social & environment needs**





Riga ECOlogical

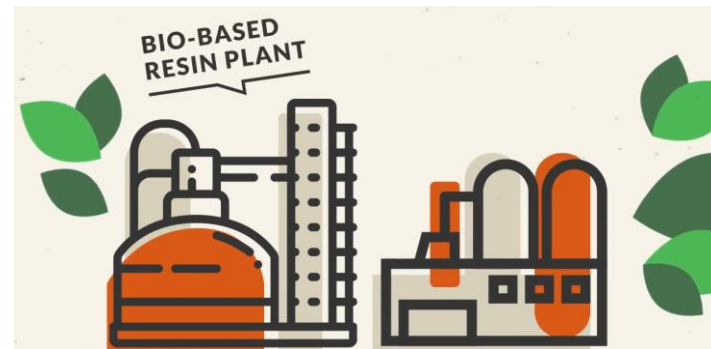
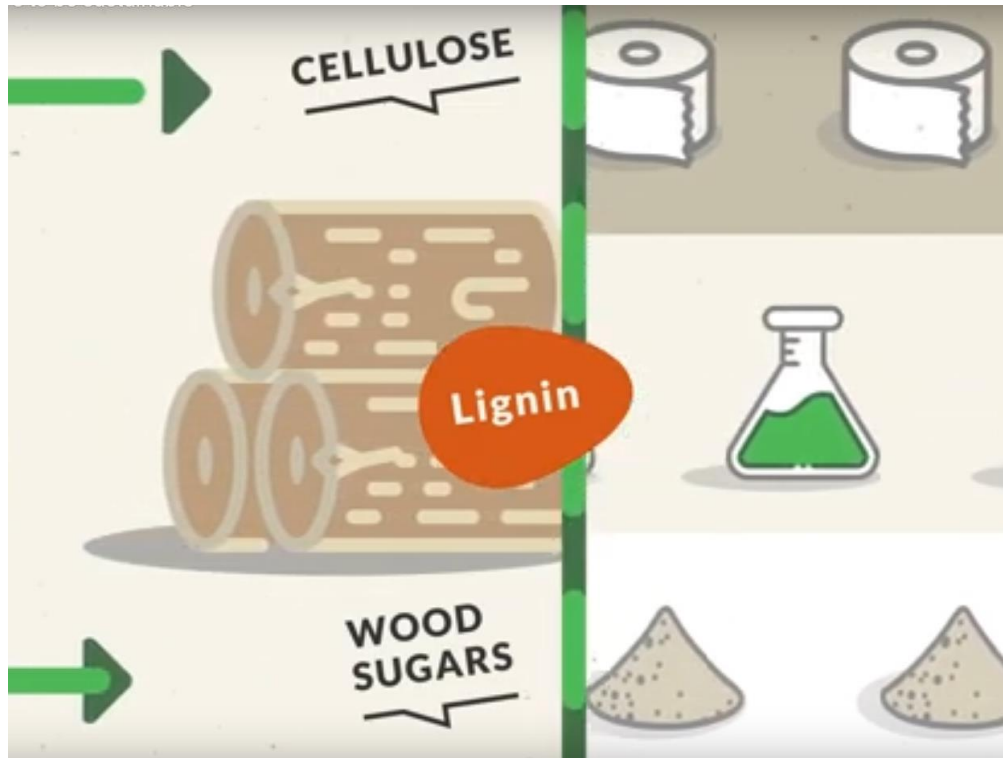
– for a sustainable and safe future

- **A renewable bio-based substitute for phenolic raw materials based on fossil oil**
- Developed in cooperation with Stora Enso, the world's leading company in the chemical and mechanical forestry industry
- All technical properties of Riga Wood plywood remain unchanged when using Riga ECOlogical
- This new lignin-based glue significantly reduces the CO2 footprint of plywood products all the way from production to end use, without negatively impacting technical performance.

Riga
ECOlogical 



Wood components





VIOBOND – On the way to a better future

The aim of the project is to completely eliminate the use of fossil resources in our production by 2050.

This project has received funding from the Bio-based Industries Joint Undertaking (BRI) under the European Union's Horizon 2020 research and innovation program under grant agreement No 101022987.

Latvijas Finieris - leads this international research consortium.

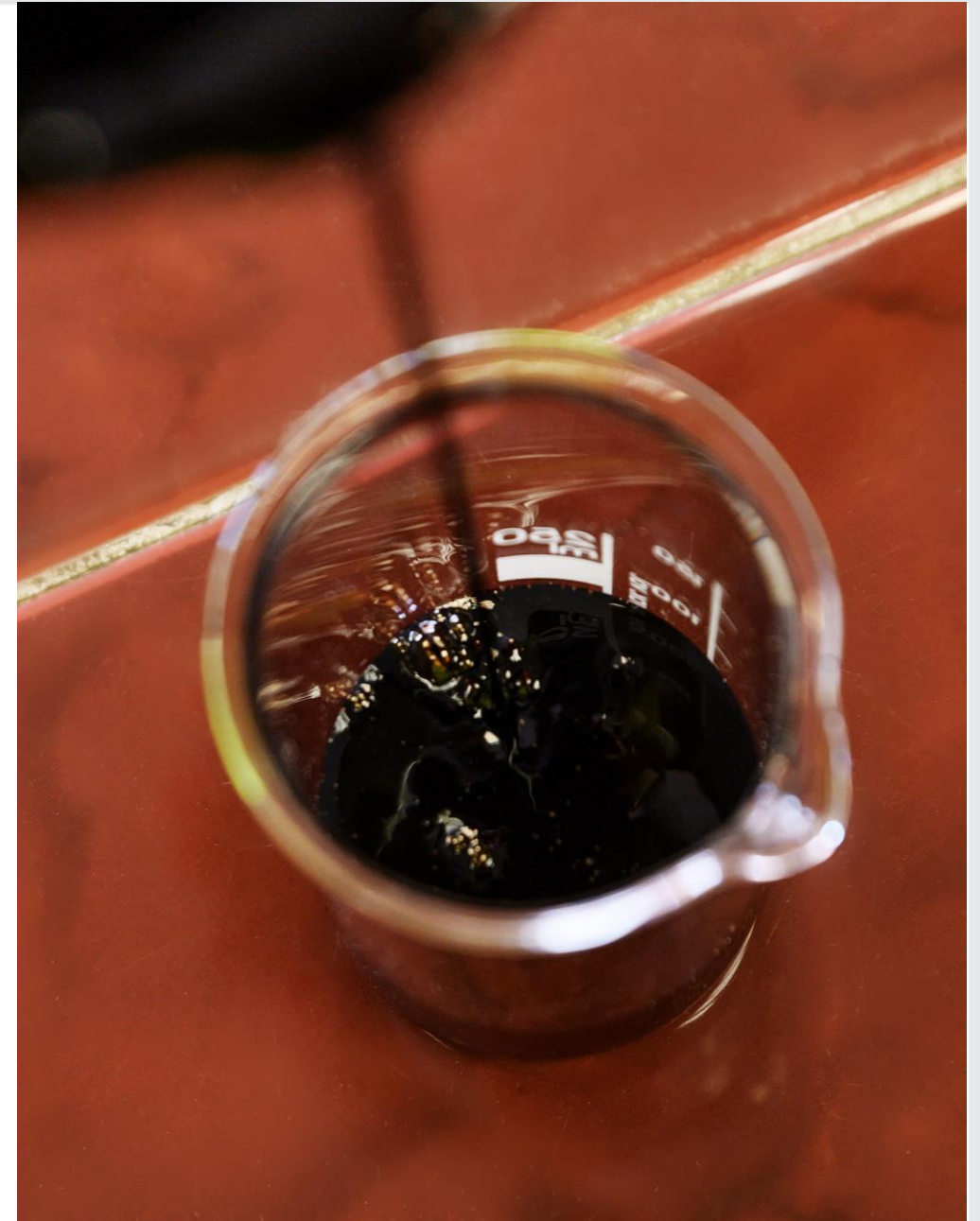
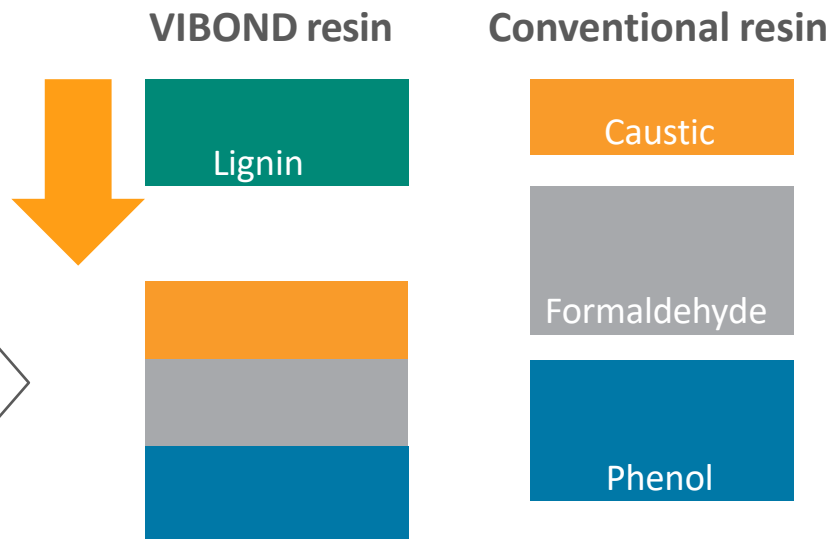
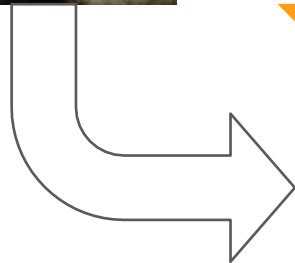


This project has received funding from the Bio-based Industries Joint Undertaking (JU) under the European Union's Horizon 2020 research and innovation program under grant agreement No 101022987. The JU receives support from the European Union's Horizon 2020 research and innovation program and the Bio-based Industries Consortium.



Transforming resins, changing the future

- By replacing phenol with lignin, the fossil content can be reduced by up to 70 %.



From the birch log to betulin



Use of side streams by Latvijas Finieris Group (%) 2022



Betulin – From nature to success

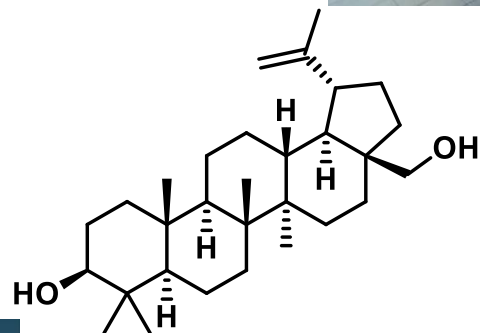
Betulin is a valuable extract from birch bark - a natural compound with antibacterial and cell-regenerating properties

The birch bark used for the production of birch bark extract is obtained from controlled, traceable and certified sources that respect nature.

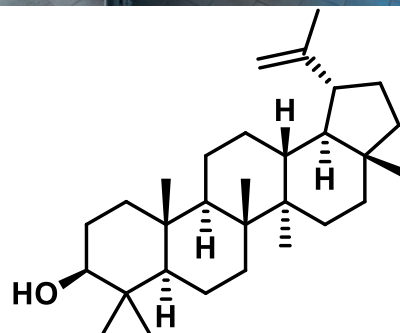
It is a useful way to utilize by-products that are generated during the production of other birch wood products.



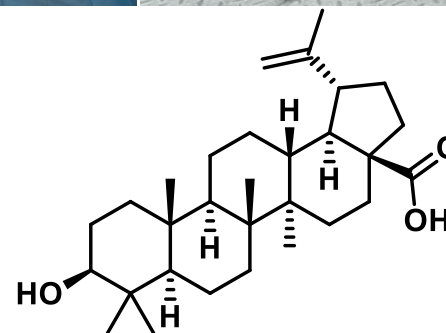
Birch bark extract - Chemicals



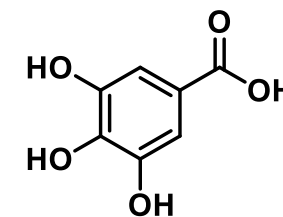
Betulin
60-97%



Lupeol
2-10%



Betulinic acid
2-6%



Tannins
0-2%



Betulin – a wonder of nature

In recent decades, it has been intensively researched worldwide and has found numerous unique applications in the food, cosmetics, health and other industries.



Lebensmittelindustrie



Kosmetik



Gesundheitspflege



The journey to the birth of BetulinLab



Suberinic acids

100% ecological adhesives

ADVANTAGES

Environmentally friendly

The suberinic acids binder is a by-product obtained from renewable natural resources and is completely ecological



Health friendly

The binder does not contain phenol-Formaldehyde resins or other substances harmful to human health



Efficiency

Much more expedient use of wood resources to obtain a widely used material



Moisture resistance

Suberinic acids are hydrophobic Substances, so they are suitable for use in Moist outdoor conditions.



Innovative material

Innovation in the industry with new and Simple manufacturing technology

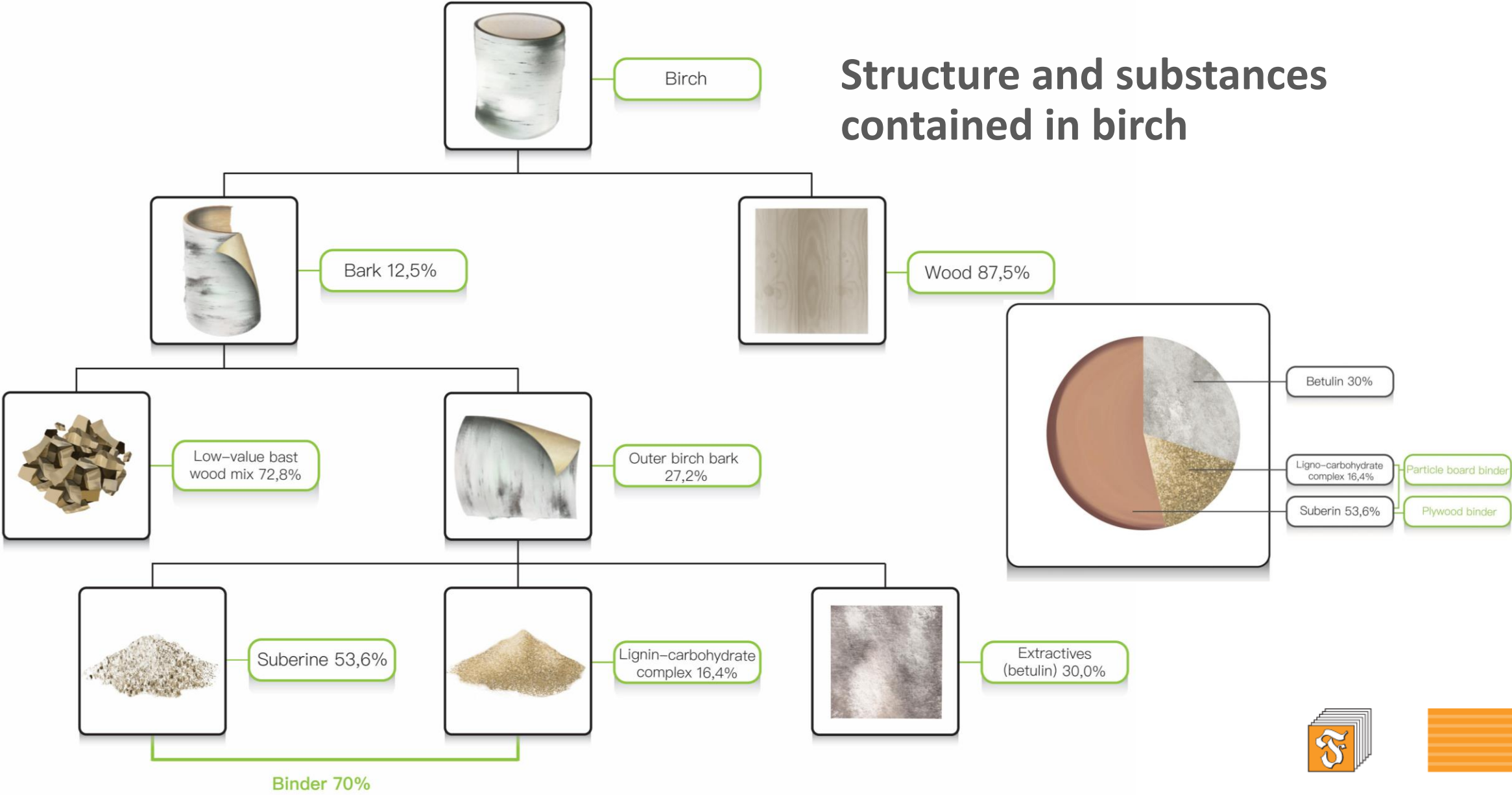


Good mechanical properties

Particle boards with the suberinic acids Binder are characterized by high bending strength, strength of internal bonds and Form stability



Structure and substances contained in birch



Let's create Future together!

