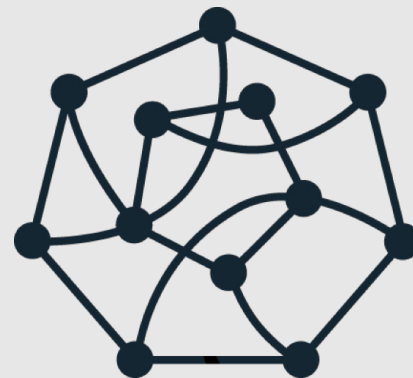
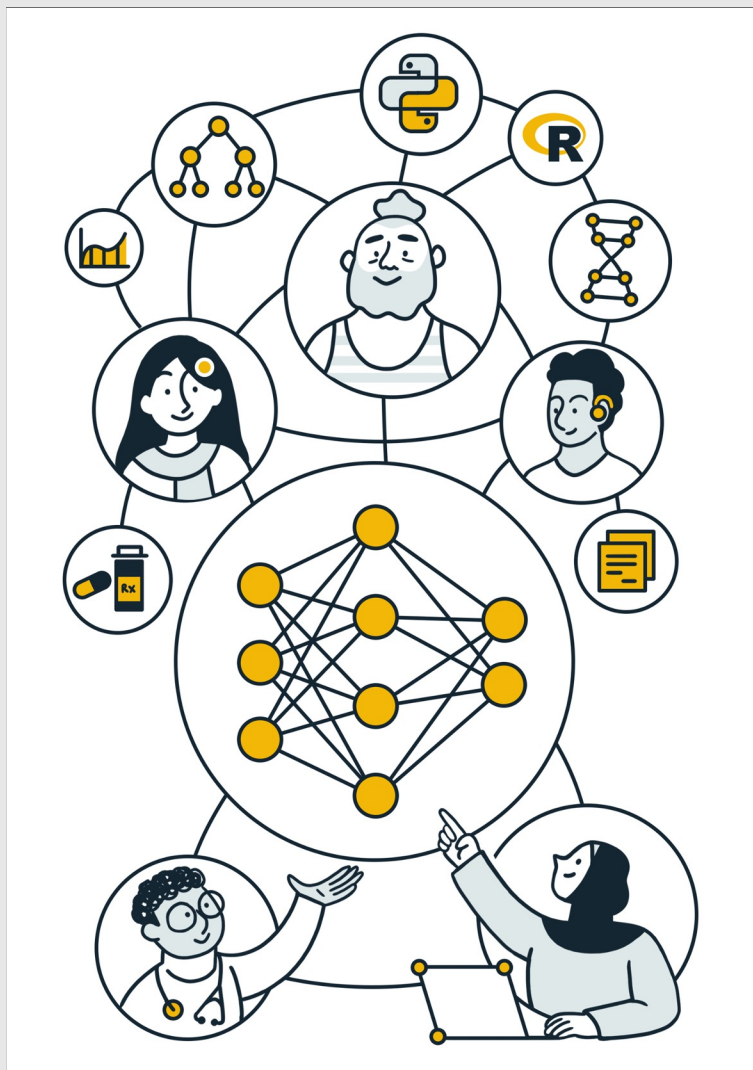


Embedding patients lived experience into research on multiple long-term conditions

Bastian Greshake Tzovaras

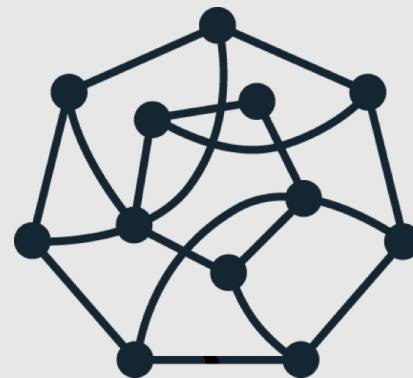


AI for Multiple Long-term Conditions
Research Support Facility



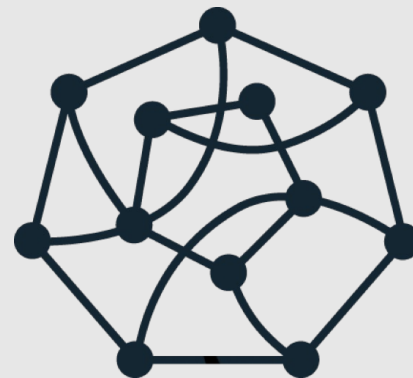
AI for Multiple Long-term Conditions Research Support Facility

- Amongst people aged 65+:
 - 50% have 2 or more health conditions
 - 10% have 4 or more health conditions



AI for Multiple Long-term Conditions Research Support Facility

- Amongst people aged 65+:
 - 50% have 2 or more health conditions
 - 10% have 4 or more health conditions
- Predicted to increase by 2035 to 68% and 17%, respectively

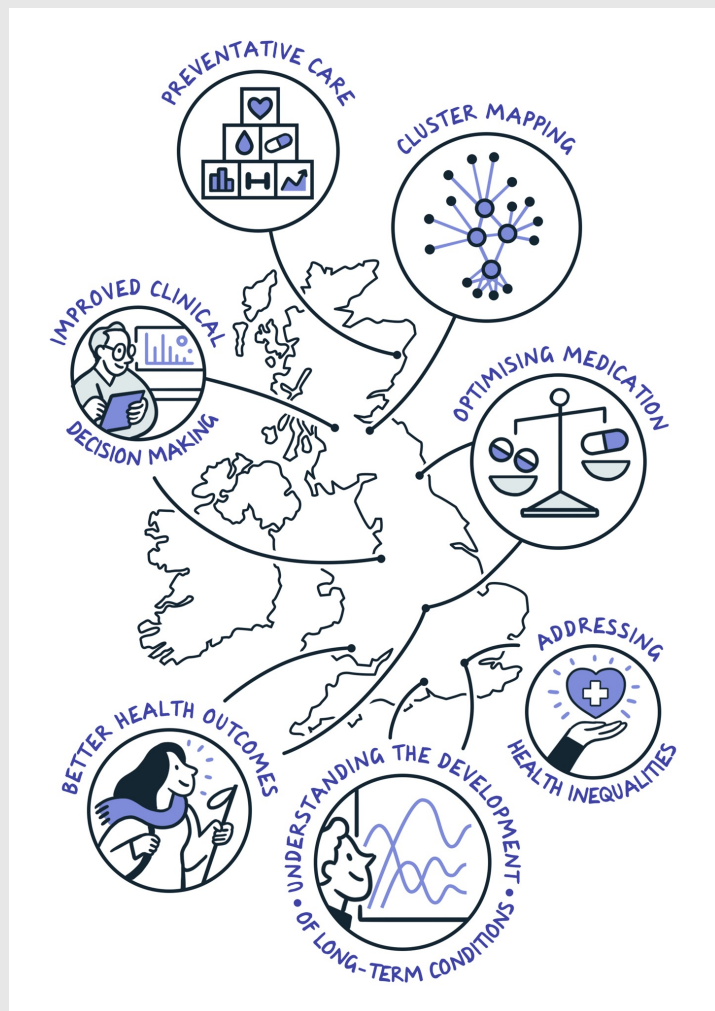


AI for Multiple Long-term Conditions Research Support Facility

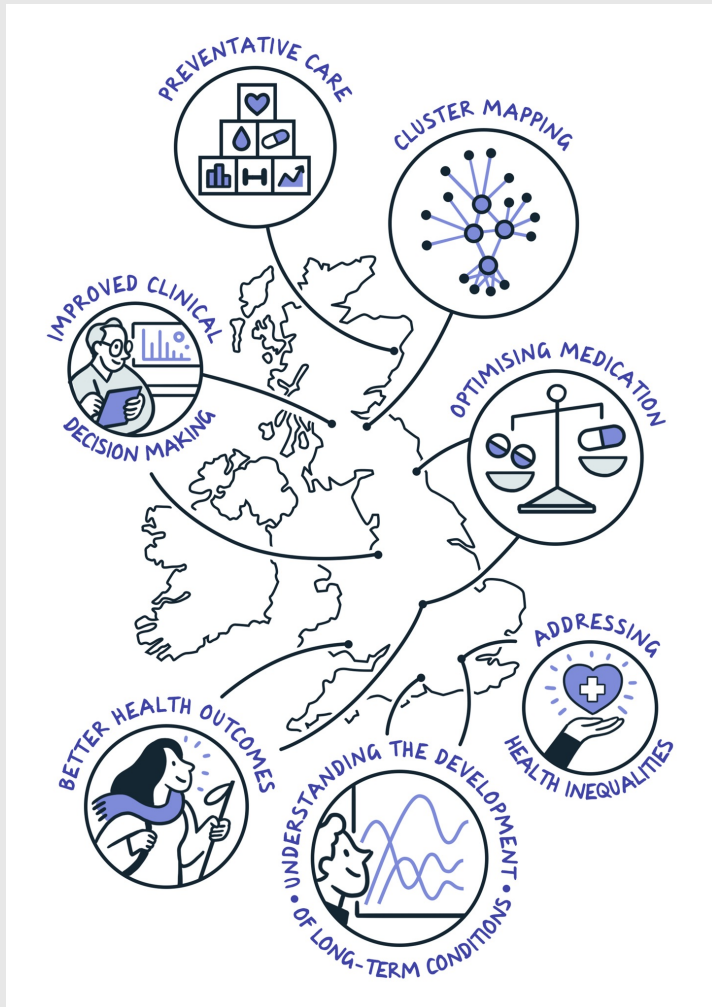
- Amongst people aged 65+:
 - 50% have 2 or more health conditions
 - 10% have 4 or more health conditions
- Predicted to increase by 2035 to 68% and 17%, respectively
- Covers physical & mental conditions, incl. arthritis, respiratory disease, cancer, diabetes, depression, dementia, ...

AI for Multiple Long-Term Conditions

- A group of 8 research consortia, spread across the UK

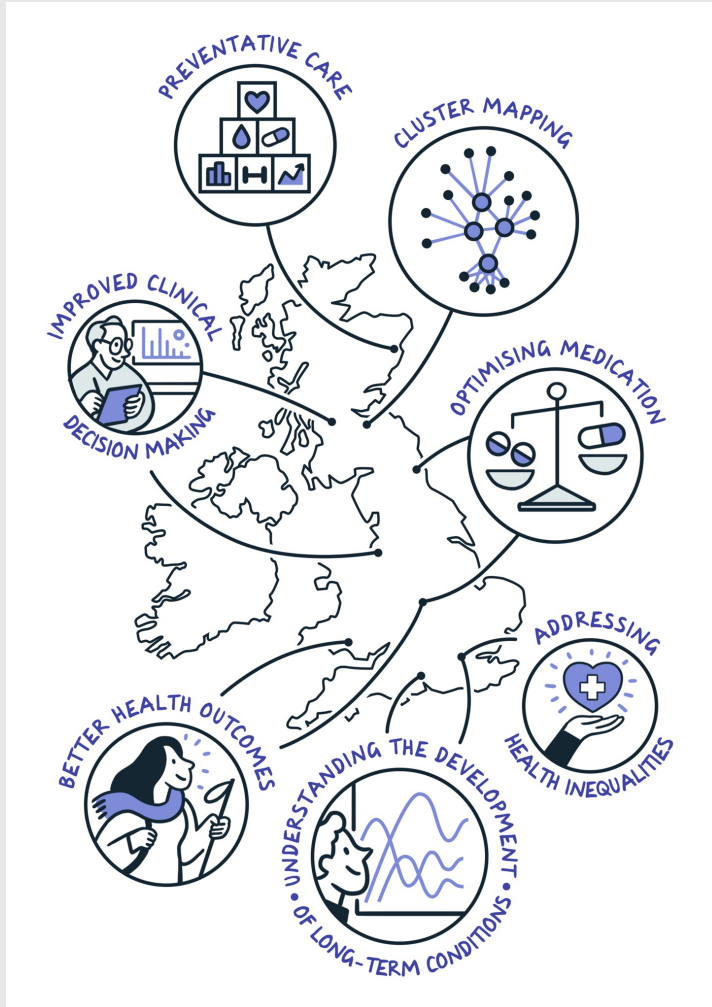


AI for Multiple Long-Term Conditions



- A group of 8 research consortia, spread across the UK
- Each working on different aspects of MLTCs & how AI can be used for it

AI for Multiple Long-Term Conditions



- A group of 8 research consortia, spread across the UK
- Each working on different aspects of MLTCs & how AI can be used for it
- Wide range of research topics, e.g.:
 - Health inequalities
 - Improving clinical decision making
 - Identifying polypharmacy issues

The AIM Research Support Facility



- Support the AIM consortia
 - Connecting stakeholders across consortia,
 - Identify & co-create solutions to shared problems.

The AIM Research Support Facility



- Support the AIM consortia
 - Connecting stakeholders across consortia,
 - Identify & co-create solutions to shared problems.
- Works across 5 themes:
 - Reproducible & secure infrastructure
 - Accessible research data
 - Community building/training
 - Patient & Public Involvement & Engagement
 - Sustainability/Legacy

The AIM Research Support Facility



- Support the AIM consortia
 - Connecting stakeholders across consortia,
 - Identify & co-create solutions to shared problems.
- Works across 5 themes:
 - Reproducible & secure infrastructure
 - Accessible research data
 - Community building/training
 - **Patient & Public Involvement & Engagement**
 - Sustainability/Legacy



Our PPIE goals

- Support & empower people with lived experience of MLTCs
- Help to ensure that AIM research develops best PPIE practices
- Co-create research with PPIE members
- Ensure that all research outputs are accessible to all

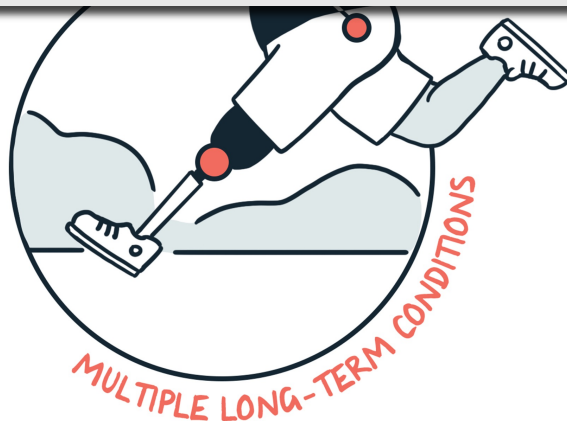


PPIE community building

- A growing community
 - No reinventing the wheel – but joining forces!
 - ~150 members, representing 25 research projects
- A blended community
 - 40% researchers
 - 40% PPIE members
 - 20% PPIE staff
- Monthly virtual meet-ups
 - A safe space, for mutual learning & discussions between stakeholders



“I have thoroughly enjoyed being part, but I am patient voice rather than early career researcher. So, I see my role as more to reassure early career researchers we are not scary and can help them do things better”



PPIE community building

— A growing community

No reinventing the wheel – but joining forces!

~150 members, representing 25 research projects

blended community

40% researchers

- 40% PPIE members
- 20% PPIE staff

— Monthly virtual meet-ups

- A safe space, for mutual learning & discussions between stakeholders



Our Community's impact

- Improve how PPIE is being facilitated across research projects, e.g.
 - How to invite for & facilitate online meetings
 - Best practices for conference planning -> soon available as open source book chapter



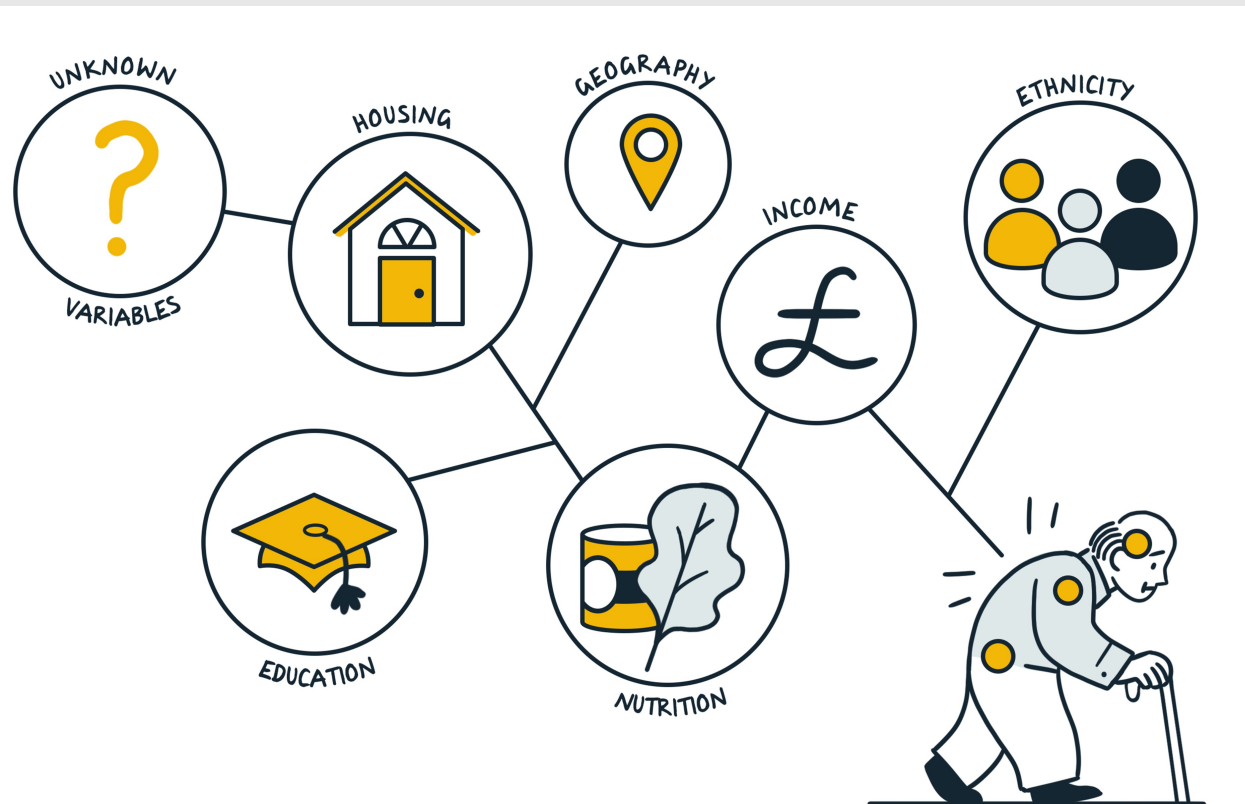
Our Community's impact

- Improve how PPIE is being facilitated across research projects, e.g.
 - How to invite for & facilitate online meetings
 - Best practices for conference planning -> soon available as open source book chapter
- Provide training opportunities, for ECR & PPIE members:
 - How to recruit diverse PPIE groups?
How to accessible communicate?
 - Accessible communication in practice, e.g. “What is AI/data?”

Our Community's impact

— Supporting research efforts in PPIE

- How to recruit & facilitate focus groups,
- How to make outputs (project summaries, illustrations) accessible



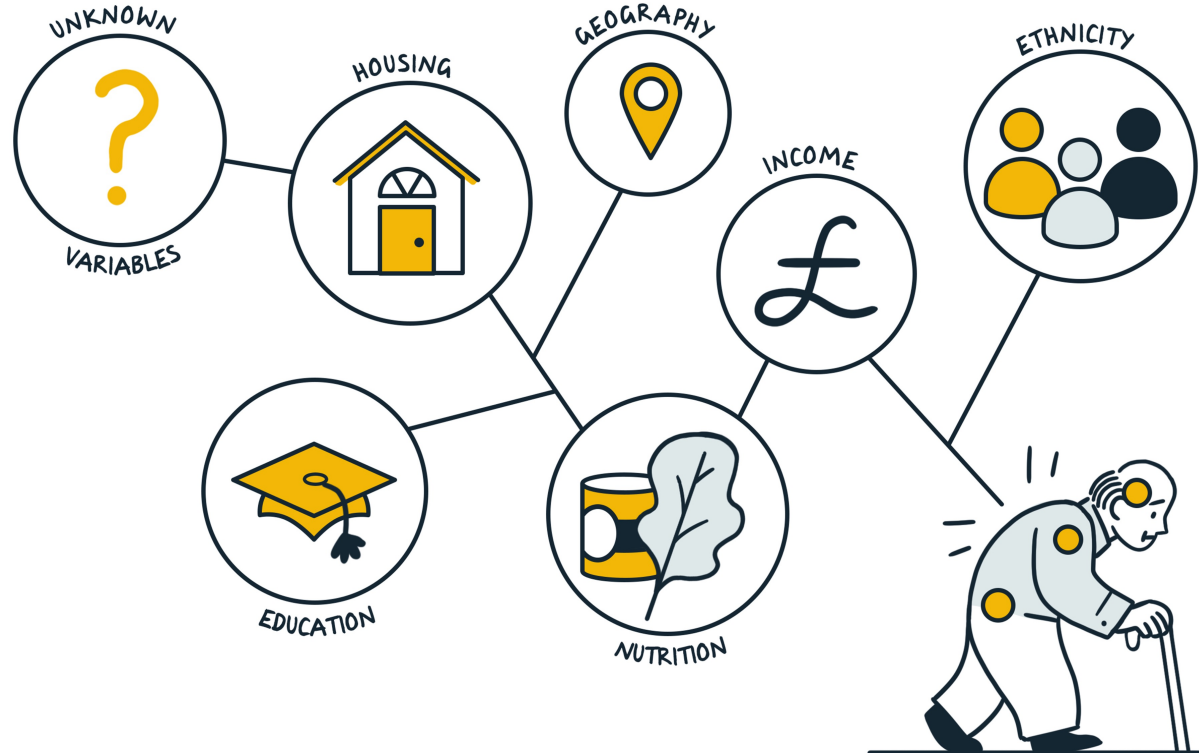
Our Community's impact

— Supporting research efforts in PPIE

- How to recruit & facilitate focus groups,
- How to make outputs (project summaries, illustrations) accessible

— A concrete example

- Survey on *Fairness of Health AI*
 - Which MLTC-relevant factors might make AI unfair?
 - Initial co-development of idea with feedback in CoP community meeting
 - Refined survey with CoP members in 2 focus groups!





Chat with us!

Stand 21, 1st Floor, Pickwick (Health Zone)



AI for Multiple Long-term Conditions
Research Support Facility